

PI Visualization Suite

Data for Every User

WHEREVER YOU ARE...



WHATEVER YOU DO



ON YOUR DEVICE

Operations data is valuable to people throughout your organization, not just to engineers and operators. With the right data people throughout your company can make more informed decisions, exchange insights and react faster to process, regulatory and business changes. Making data accessible to all facets of your company is challenging. From presenting data in the many differing formats users need, quickly delivering data to a gamut of devices and ensuring that the right information reaches the right people, there are many issues to consider.

The PI Visualization Suite™ helps you conduct business in a new way. It ensures that everyone in your company can access the data they need, anytime, anywhere. As new corporate initiatives and projects are undertaken, the PI Visualization Suite allows you to leverage your existing toolset while still meeting each project's unique data access and visualization needs. The PI Visualization Suite includes: PI ProcessBook™, PI DataLink™, PI Coresight™, PI WebParts™, PI Manual Logger™, PI ActiveView™ and PI BatchView™.



PI Coresight

Easily perform ad hoc data analysis on the go from your iPad® or the web. With PI Coresight, anyone can instantly investigate issues and solve problems while simultaneously creating new displays/reports that share your insights company wide and provide valuable resources for your co-workers. Sharing insights is as easy as sending a link to your coworkers.



PI ProcessBook

PI ProcessBook empowers your users to graphically create displays and enrich them with layers of robust, dynamic, data. With PI ProcessBook, your operators can compare areas side-by-side to quickly understand which processes should be optimized. Personnel can visually walk through a plant by navigating through related sets of displays. Supervisors can get snapshot views of key processes outside of the control room.

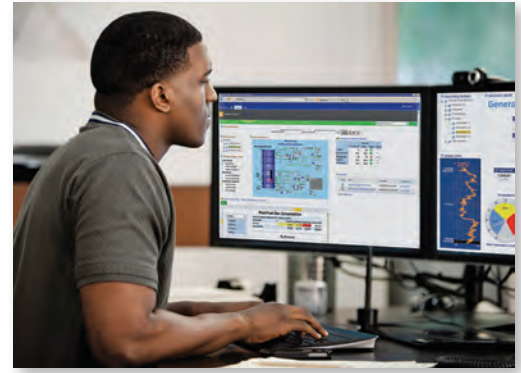


PI DataLink

With PI DataLink you can create dynamic reports for any area of your operations, instantly summarize years of data and monetize your PI System data to discover the true cost and value of operation decisions. Your environmental personnel can create the custom reports for regulatory authorities. Your accounting personnel can review the costs of raw materials compared to production outputs. Shift supervisors can review production performance metrics. Engineers can use familiar Microsoft® Excel® formulas to perform deep analysis of historical data.

PI WebParts

PI WebParts helps you create dynamic dashboards in Microsoft SharePoint® that combine your real-time operations data with financial information, graphics and other company information. SharePoint has become a common tool for sharing information and reports throughout the enterprise. PI WebParts allows you to enhance your SharePoint displays with real-time information from the PI System, so more users can leverage valuable operations data to do their jobs.



PI Manual Logger

Not all data can be automatically collected. PI Manual Logger gives you a simple and easy way to integrate manually collected data alongside your automated operations data. From field inspections to lab values, your data and expert insights are easily collected and seamlessly delivered to the PI Server as frequently or infrequently as you need.



PI ActiveView

PI ActiveView helps you minimize additional work and maximize reusability. With PI ActiveView you can easily deliver existing PI ProcessBook displays to users who want to leverage them but don't need the tools to build them. For example, managers can use the same content as your Operators and Engineers but they can access it through a web site, a Microsoft Office document or through your custom-built applications – seeing the information they want without having to be trained on new software.



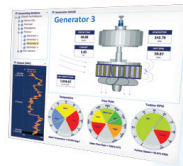
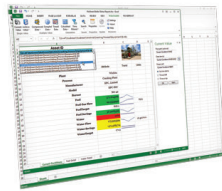
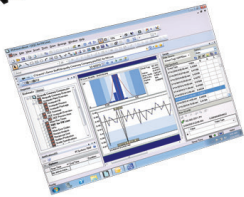
PI BatchView

Viewing your real-time process data within the context of your batch processes is critical for manufacturing products. PI BatchView frames your data within the context of your batch processes to improve your operational analysis and understanding so you can have more on-spec batches, meet regulatory compliance obligations and make faster and better decisions.



The PI Visualization Suite frees you from purchasing models that require you to predict the future. Before, to ensure optimal value for your money, you had to accurately predict the precise number of users who would need a product, predict every scenario you'd want to use it for and every way you'd need to deploy it. With PI Visualization Suite every user in your company, now and in the future, is covered. PI Visualization Suite gives you unlimited access to an arsenal of tools so you can deploy the right tool, every time and it supports a variety of devices and delivery channels for sharing your data.

PI ActiveView



PI BatchView



PI WebParts



PI Coresight



PI ProcessBook



PI Manual Logger



PI DataLink



About OSIsoft, LLC

OSIsoft (www.osisoft.com) delivers the PI System, the industry standard in enterprise infrastructure, for management of real-time data and events. With installations in more than 110 countries spanning the globe, the PI System is used in manufacturing, energy, utilities, life sciences, data centers, facilities and the process industries. This global installed base relies upon the PI System to safeguard data and deliver enterprise-wide visibility into operational, manufacturing and business data. The PI System enables users to manage assets, mitigate risks, comply with regulations, improve processes, drive innovation, make business decisions in real-time and to identify competitive business and market opportunities. Founded in 1980, OSIsoft is headquartered in San Leandro, California, with operations worldwide and is privately held.

All companies, products and brands mentioned are trademarks of their respective trademark owners.