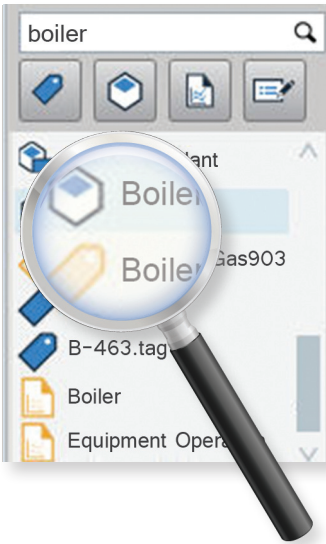


Features

Intuitive tool: PI Coresight is easy to use. With a simple click and drag you can build or modify displays and dynamically transition between analysis views.



Powerful searches: PI Coresight searches all your PI System data making it easily accessible. In one step you can search all the relevant information – both data and displays.



Discover Related Information:

PI Coresight automatically finds related assets and events for items in your displays so investigating data is fast, simple and informative.

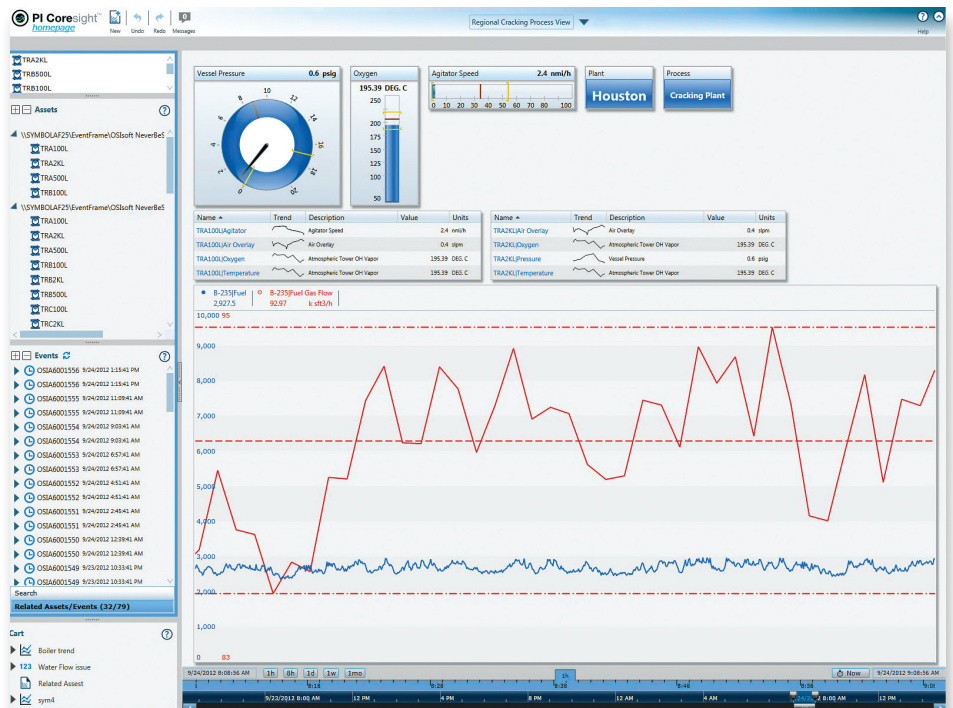
Flexible analysis: With PI Coresight you can view data in many ways, making data easy to explore and understand. You can view data as values or in trends, tables, gauges or bars. You can also transition from one view to another with a simple click of the mouse.

Business Challenge

Today's successful businesses make effective use of information. Combining information from various facets of the business including operations, production, and market conditions is especially valuable. However, providing access to this information in a timely, secure and easy way has always been a challenge. Data analysis tools are often complex and time-consuming to use and usually require special training. As a result, access to this valuable information becomes limited to a select few. PI Coresight™ changes all this, giving you the fastest, easiest way to visualize your PI System™ data.

Overview

PI Coresight is a web-based application that delivers fast, easy, and secure access to all your PI System data. With PI Coresight data can be analyzed in a variety of formats allowing you to see information the way you want. Display objects self-configure so you spend time analyzing information, not building displays. PI Coresight is so intuitive to use that no special training is needed. You can immediately share displays with others and quickly put new insights to work.



Benefits

Shared intelligence: PI Coresight includes a public display feature that allows you to easily share displays throughout the enterprise. With instant access to information and the ability to share displays, co-workers can more easily collaborate by sharing information and insights. PI Coresight displays can also be presented through portals, further facilitating enterprise-wide collaboration.

Access to multiple servers: PI Coresight can securely access data from multiple PI System servers within your enterprise. Regardless of its physical location, all data is readily available through PI Coresight.

Features Continued

Simplified display creation: PI Coresight self-configures display objects so you do not need to worry about laying out displays. Simply select your data and PI Coresight takes care of the rest. PI Coresight also includes a cart sidebar where you can save favorite display objects. With a click and drag you can add cart items to new or existing displays.



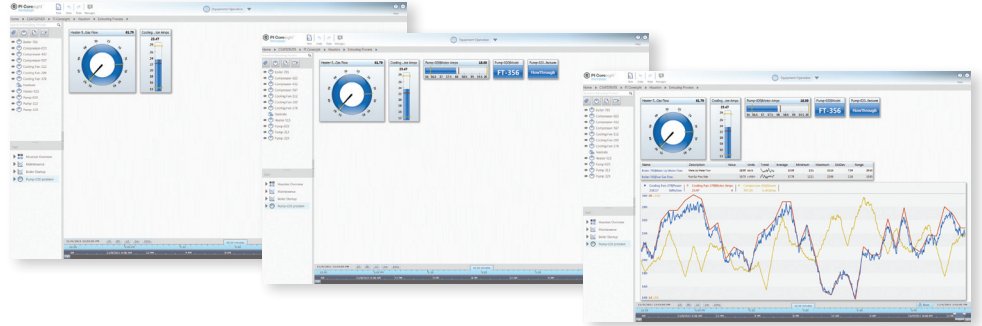
Easily incorporate new data: With PI Coresight you can investigate issues by easily dragging and dropping new data values into existing trends and tables. PI Coresight instantly adds the new data and frames it within the context of the trend/table.

Secure: PI Coresight leverages Windows® Integrated Security as implemented by the PI System. This means you can securely access your PI System data from almost anywhere. From search results to data shown within displays, PI Coresight only presents information users are allowed to view.

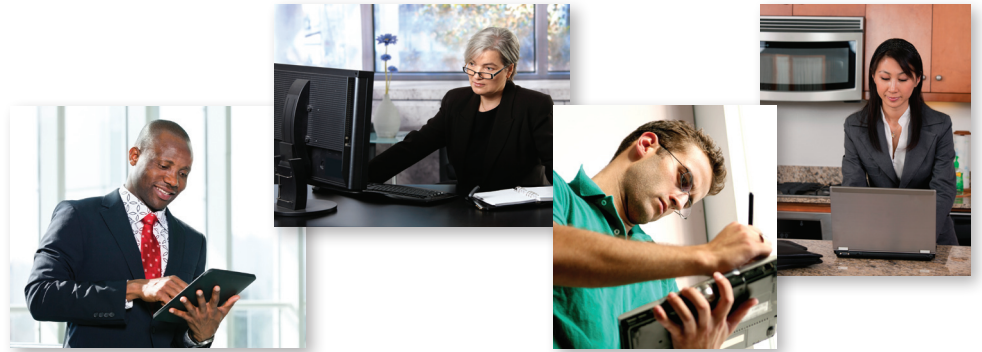


Benefits Continued

Never lose your work: PI Coresight automatically saves your work as you go. You never have to worry about recreating work you forgot to save. Displays are automatically saved to the PI Coresight server so you can access your work anytime, anywhere.



Easy to access: PI Coresight is a web-based solution that does not require any special client software. This means you can perform ad hoc analyses wherever you are, whenever you need — from your iPhone or iPad using the free PI Coresight app or from any web browser that supports Microsoft® Silverlight®.



To learn more please visit www.PICoresight.com.



About OSIsoft, LLC

OSIsoft (www.osisoft.com) delivers the PI System, the industry standard in enterprise infrastructure, for management of real-time data and events. With installations in more than 110 countries spanning the globe, the PI System is used in manufacturing, energy, utilities, life sciences, data centers, facilities and the process industries. This global installed base relies upon the PI System to safeguard data and deliver enterprise-wide visibility into operational, manufacturing and business data. The PI System enables users to manage assets, mitigate risks, comply with regulations, improve processes, drive innovation, make business decisions in real-time and to identify competitive business and market opportunities. Founded in 1980, OSIsoft is headquartered in San Leandro, California, with operations worldwide and is privately held.

All companies, products and brands mentioned are trademarks of their respective trademark owners.