

A decorative graphic on the left side of the slide, consisting of a large, irregular shape composed of many small blue triangles. The triangles are arranged in a way that creates a sense of depth and movement, with some triangles pointing towards the center and others pointing outwards. The overall effect is a modern, geometric design.

Unlock Your Data with PI Data Access

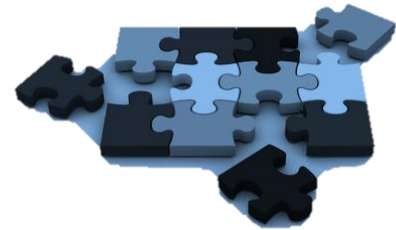
Presented by

Steve Pilon, *Product Manager, OSIsoft*

Bodo Bachmann, *Engineering Manager, OSIsoft*

Unlocking data?

- Getting the **right data**, at the **right place**, at the **right time**
- By connecting **people** and your **systems** together
 - Connectivity, visibility, interoperability





Business challenges

Disparate systems

- Acquired independently, over time
- Different departments/units

Domain, industry, or user-specific needs

- PI System is an infrastructure

Many different targets

- Diverse types of workers
- Different platforms, media

Unlocking PI System data?

- LoB Systems/Databases
- Orchestration/Workflows
- Web/Non-Windows Platforms
- Analysis/BI/Reporting
- Custom Applications



Custom Downtime Analysis Engine

Automated Ordering to Suppliers

The Products



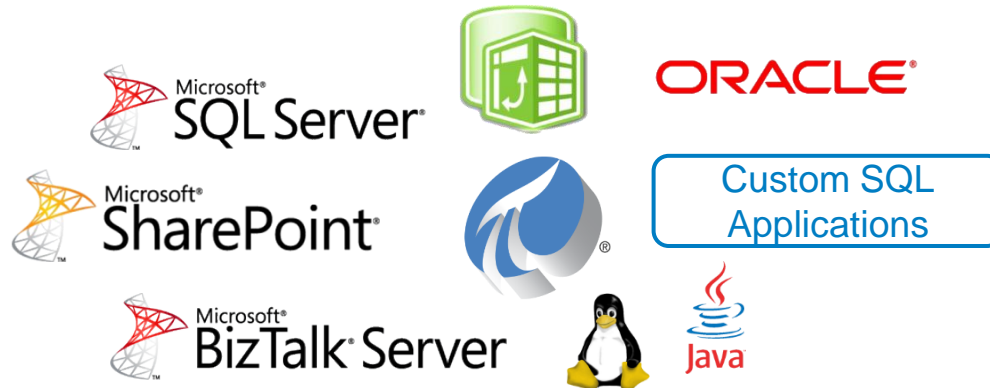


The last year in a nutshell

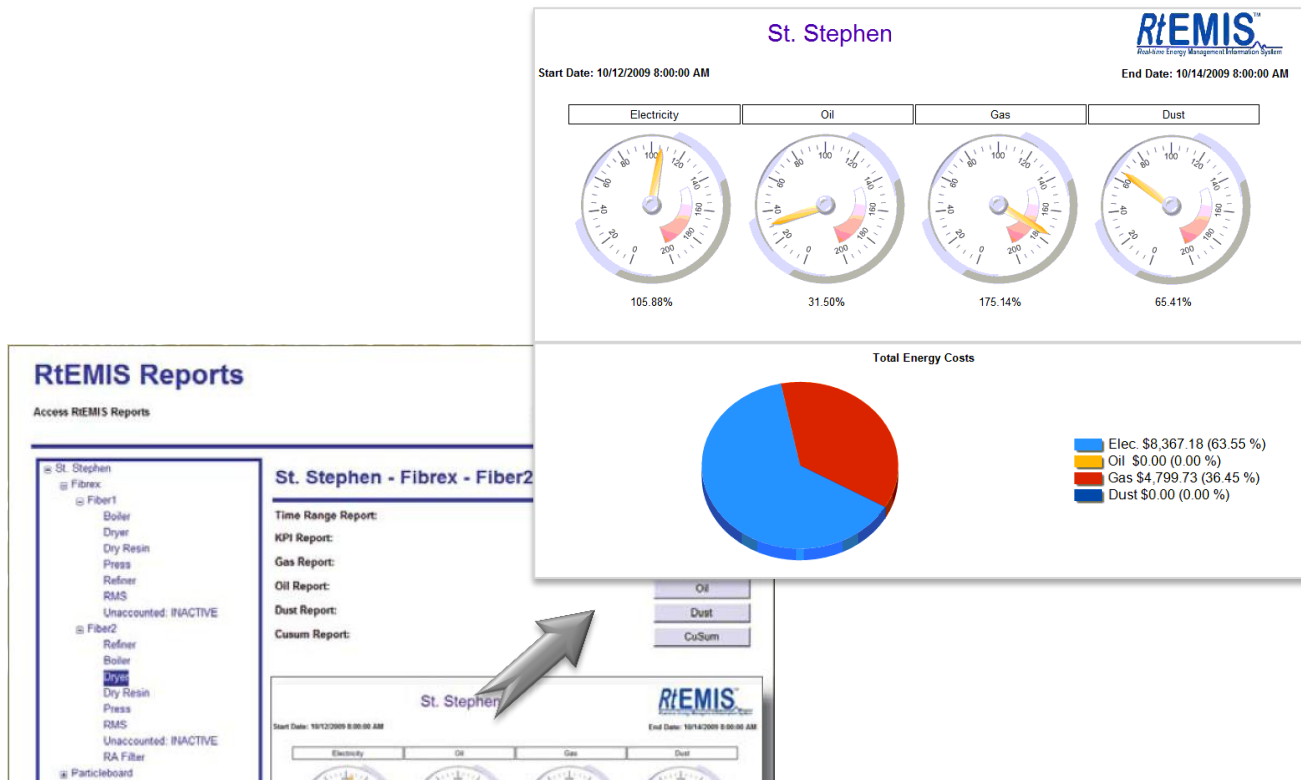
- **Brand new products:**
 - PI JDBC Driver
 - PI OLEDB Enterprise
 - PI Web Services
- **Going the 'asset' way**
- **More support for non-Windows and distributed environments**

The SQL family

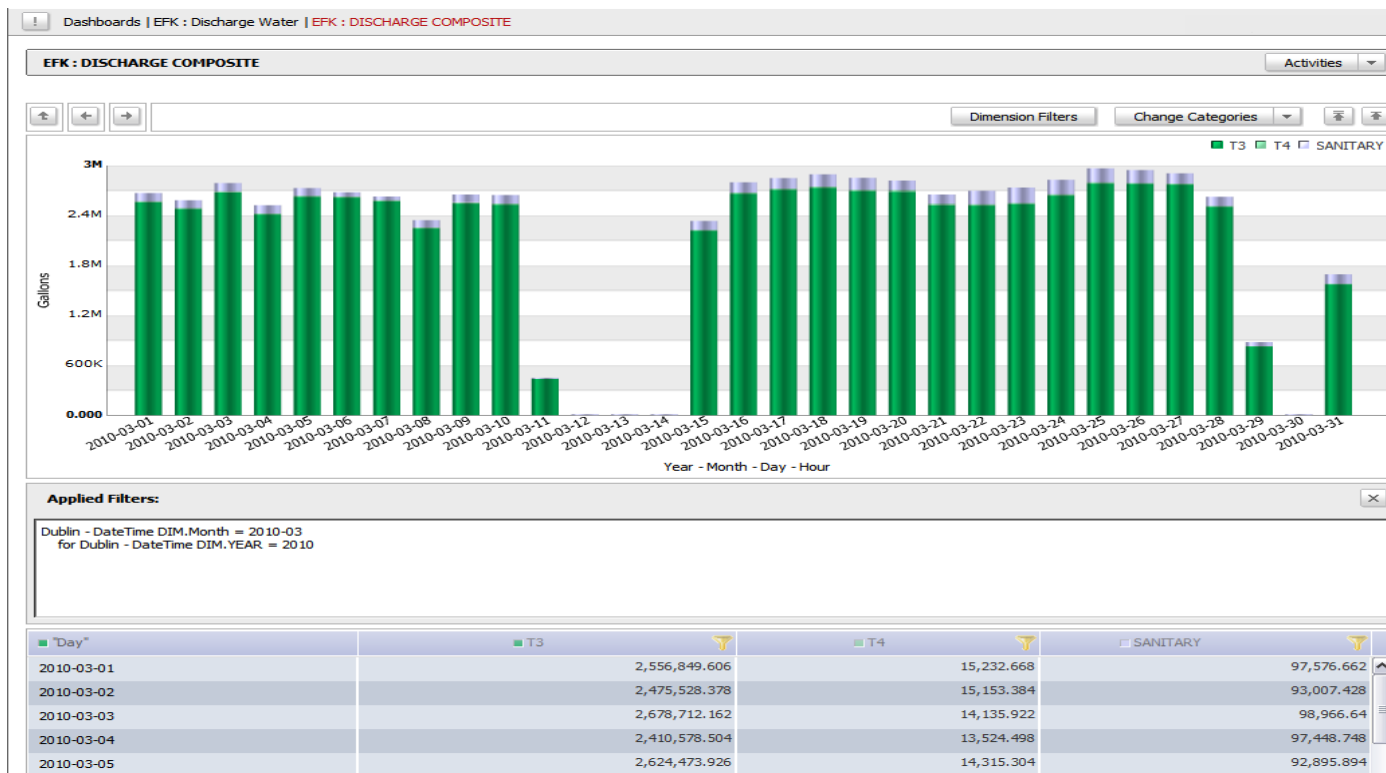
- Set of drivers that expose PI System data in a relational **database view** (OLE DB, JDBC, ODBC)
- Database systems integration, analysis, BI, reporting, Linux



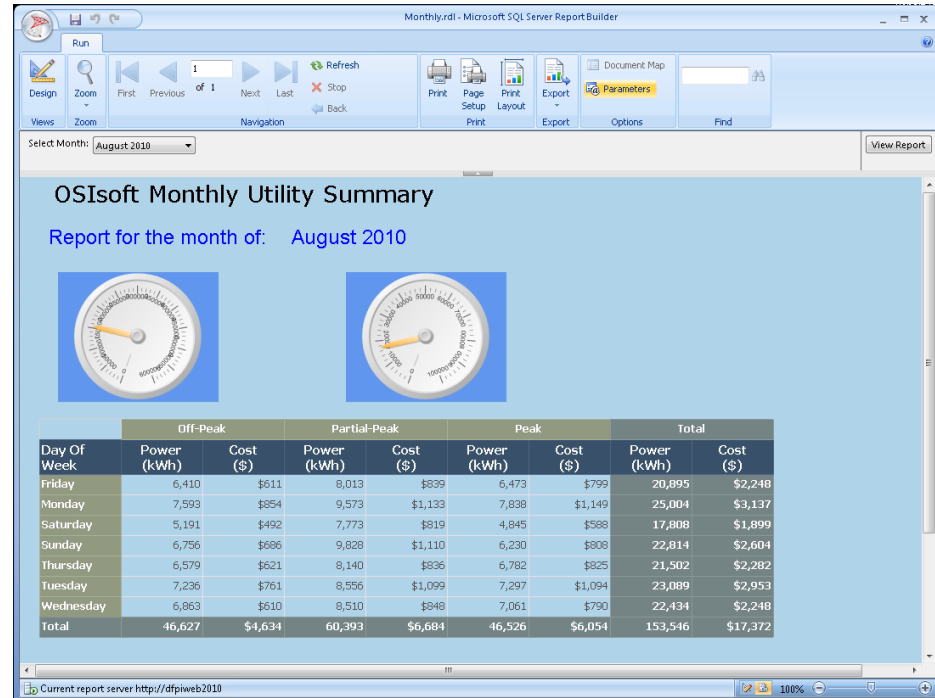
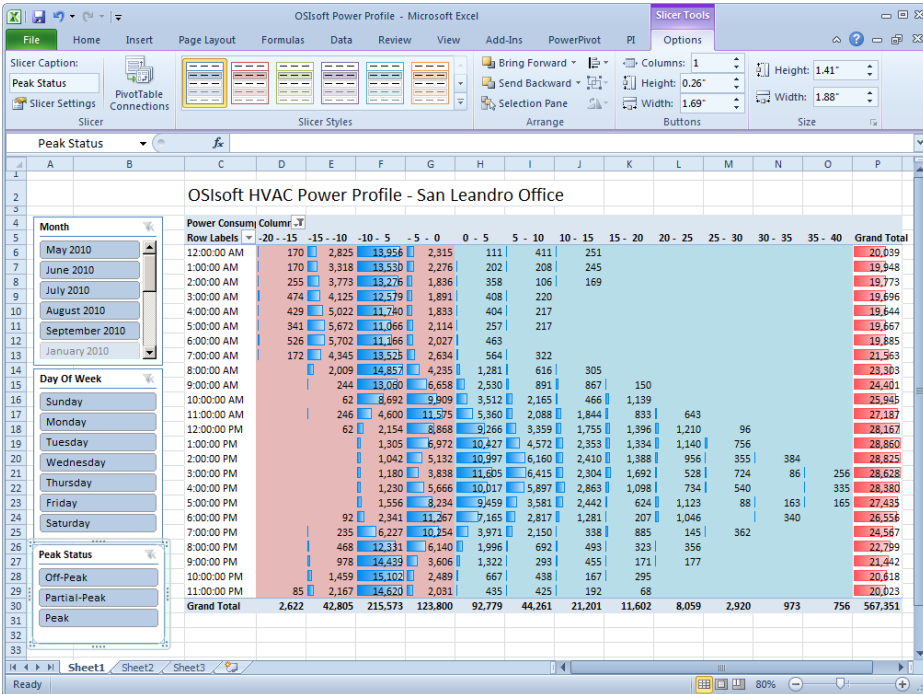
Energy management



Environmental Analytics



Cost Profiling & Reporting



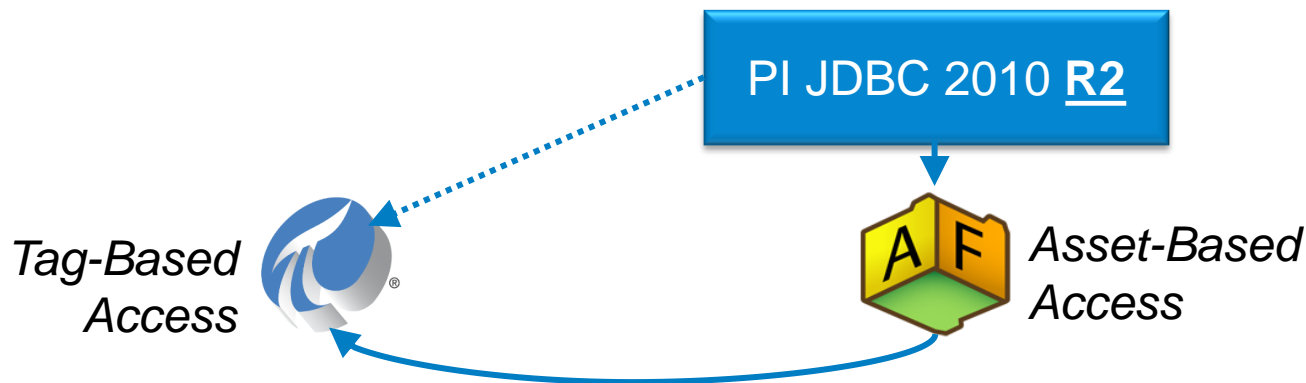
New in our SQL Family

- **PI JDBC 2010 R2**
 - Go **asset**-centric



New in our SQL Family

- **PI JDBC 2010 R2**
 - Go **asset**-centric



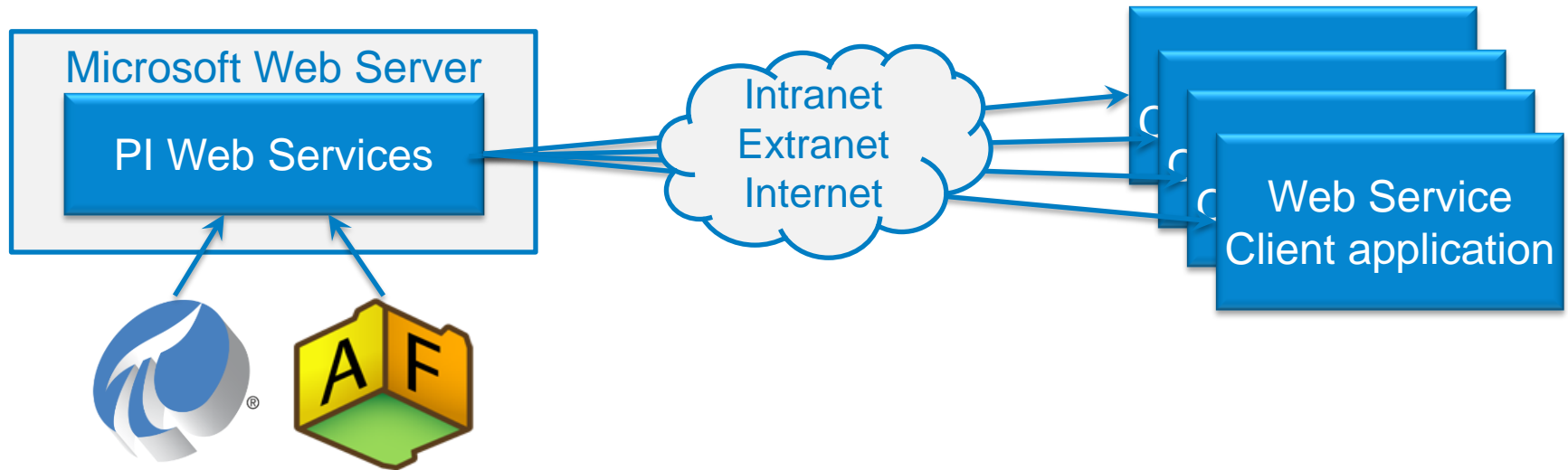


New in our SQL Family

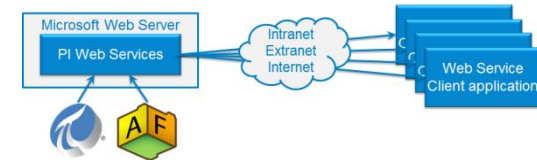
- **PI JDBC 2010 R2**
 - Go **asset**-centric
 - **Performance** enhancements
(e.g. bulk write operations)
- **PI OLEDB Enterprise 2010 R2**
 - **Performance** and **compatibility** improvements

PI Web Services

- Access to PI System data using standard **web service** technologies



PI Web Services



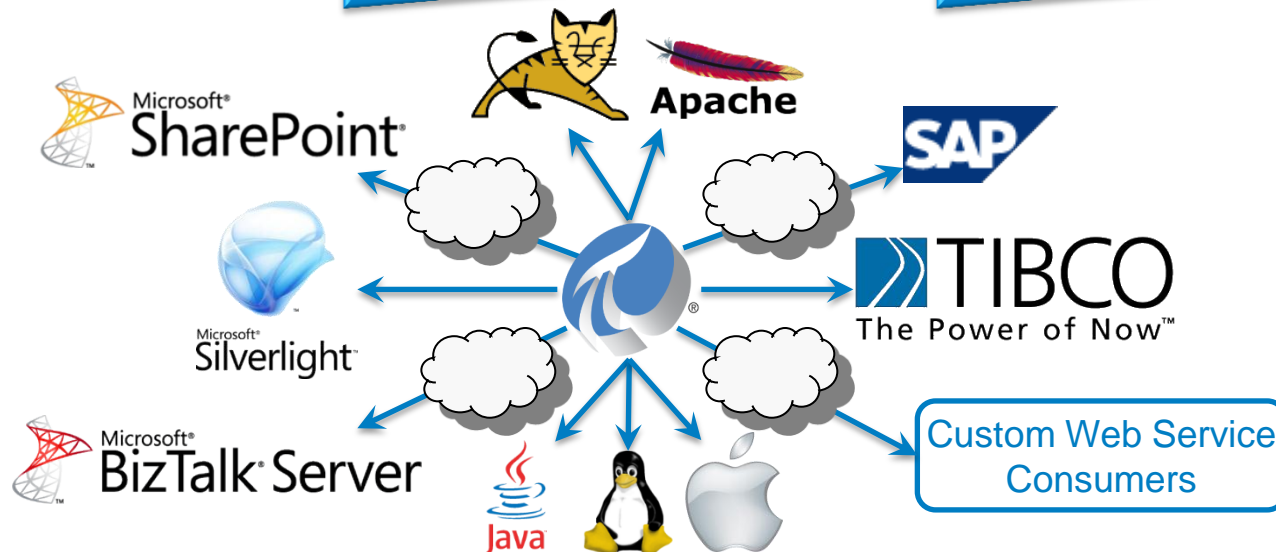
- Access to PI System data using standard **web service** technologies
- Facilitates data access over **secure** and **distributed** environments
 - **Easy deployment**: nothing required on the client machine
 - **Easy configuration**: lightweight and "firewall-friendly"

Use Cases

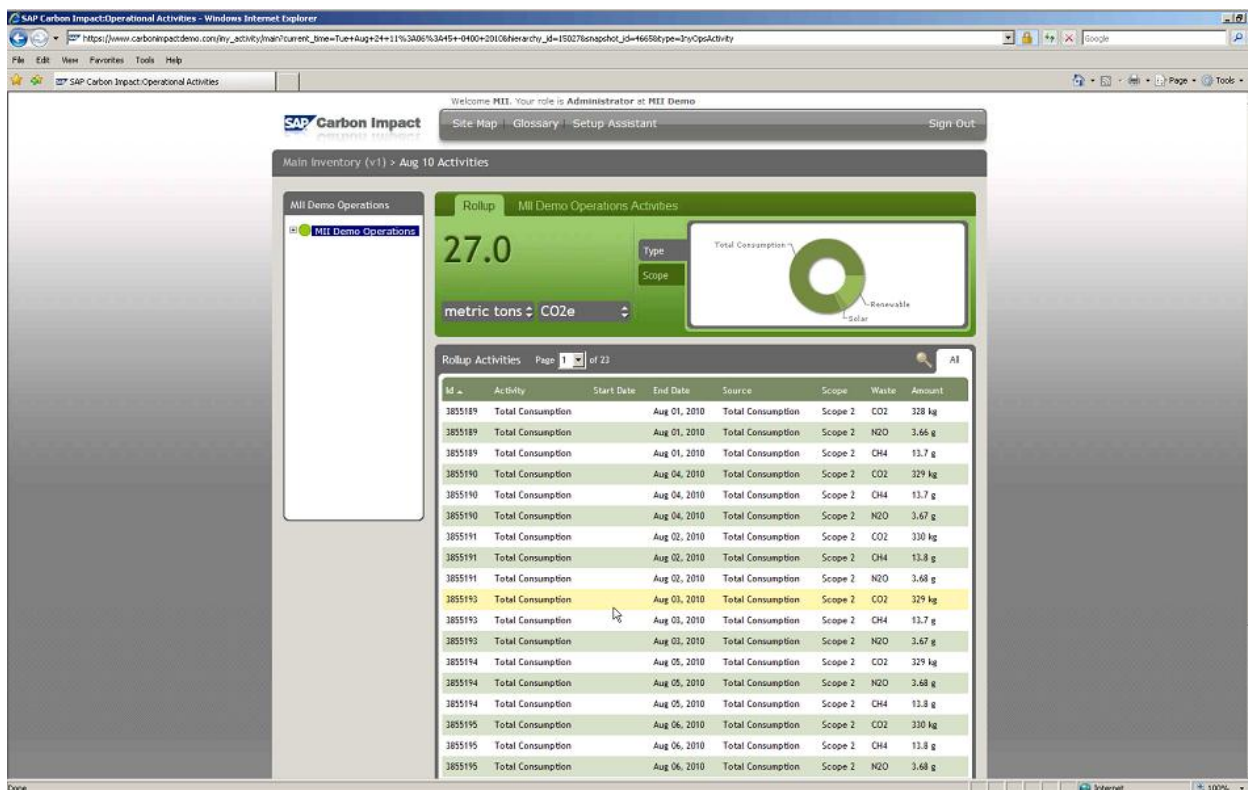
Web-based
visualization

Integration with
business systems

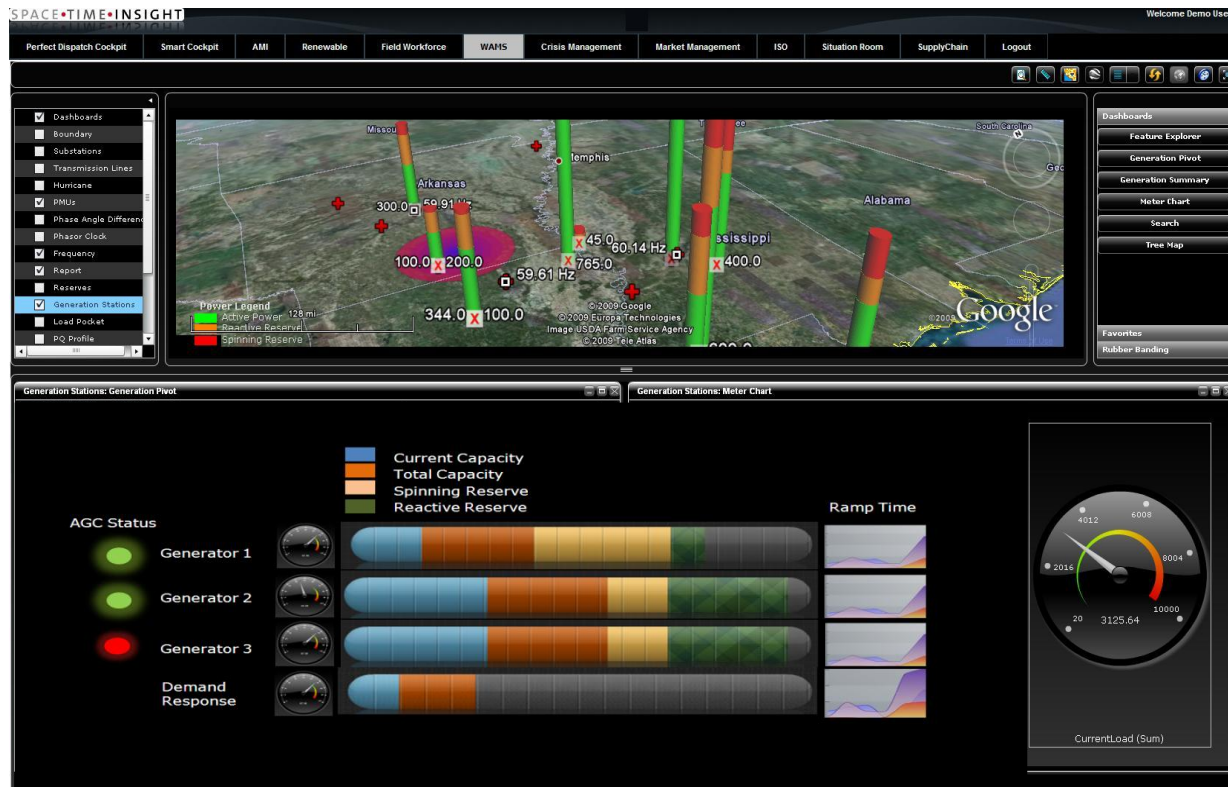
Non-Windows
environments



Carbon Impact Management



Geospatial + Timeseries Data Mashup





New in PI Web Services 2010 R2

- **2 new methods**
 - Simplified 'Get Snapshot'
 - Tag Search
- **Support for additional data insert modes**
(e.g. replace)
- **Support for additional PI AF Attribute types**
(e.g. formula, table lookup)



What's coming next

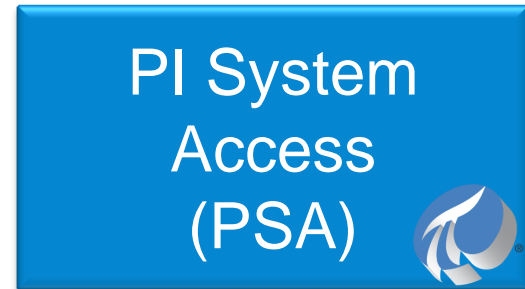
- **More [assets](#), more [events](#)**
 - Support for PI Event Frames
(PI OLEDB Enterprise, PI JDBC and PI Web Services)
- **[Performance](#) improvements**
 - Data by exception
(PI Web Services)
- **Support for "the other type" of web services**
 - A [REST](#)ful service (OData)

How to get PI Data Access

```
AFTimeRange tr = new AFTimeRange(new AFTime(tex  
AFValues vals = afDB.Elements["Pump123"].Attri  
lstValues.Items.Clear();  
foreach (AFValue val in vals)  
{
```

- Licensed as a **family** of products
(No cherry picking, you get it all) ==

- **Development** and **Runtime** licenses are s
(Only pay for what you need)



OSIsoft Virtual Campus (vCampus)

- **Online, community-oriented program**

- Software + Resources + Collaboration
- Focus on development and integration
- Partners, customers and OSIsoft
- Exclusive contents (CTPs, Betas, technical papers)

- **Personal development PI System**

- Development licenses for PI Data Access products (for developers and integrators)



<http://vCampus.osisoft.com>
vCampus@osisoft.com



What else to look at?

- **Business Intelligence with the PI System & PowerPivot**
 - Tuesday @ 15:00
 - Watch the recording!
- **OSIsoft vCampus Community: At Your Service**
 - Tuesday @ 16:10
 - Watch the recording!
- **OSIsoft vCampus Program**
 - <http://vCampus.osisoft.com>
 - Take the tour!



Thank you