



**PI Coresight**

# The Fastest, Easiest way to Visualize PI System data

Presented by

Tom LeBay – Product Manager – OSIsoft

# What is PI Coresight?

A web-based product for:

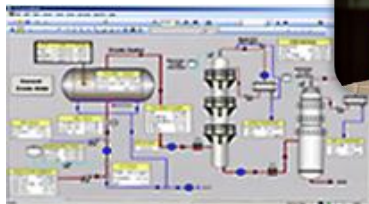
- Ad hoc analysis
- Quick investigation
- Collaboration
- Rapid deployment



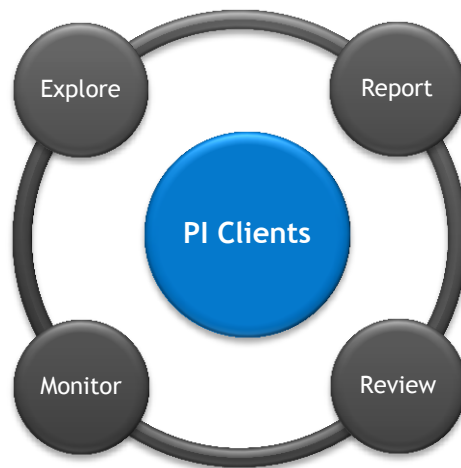
# Where Does PI Coresight Fit?



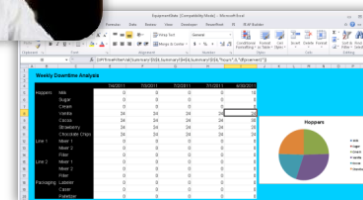
**PI Coresight:**  
*Ad Hoc Analysis & Collaboration*



**PI ProcessBook:**  
Display authoring and  
Process monitoring



**PI DataLink:**  
Reporting and table  
based analytics in  
Microsoft Excel



**PI WebParts:** Composite  
applications in SharePoint



# Driving Principles



*I asked for features that are not hidden.*

**I'll never need a user's manual again.**



*I want a more modern user interface.*

**Now I have a modern and intuitive UI.**



*Make it easier to find the information I'm looking for.*

**Finding information has never been more powerful.**



*It's too hard to create and edit displays.*

**Display creation is fast and easy.**



*I need to be able to start working where I left off.*

**I can start without remembering every detail.**

# Admin Interface

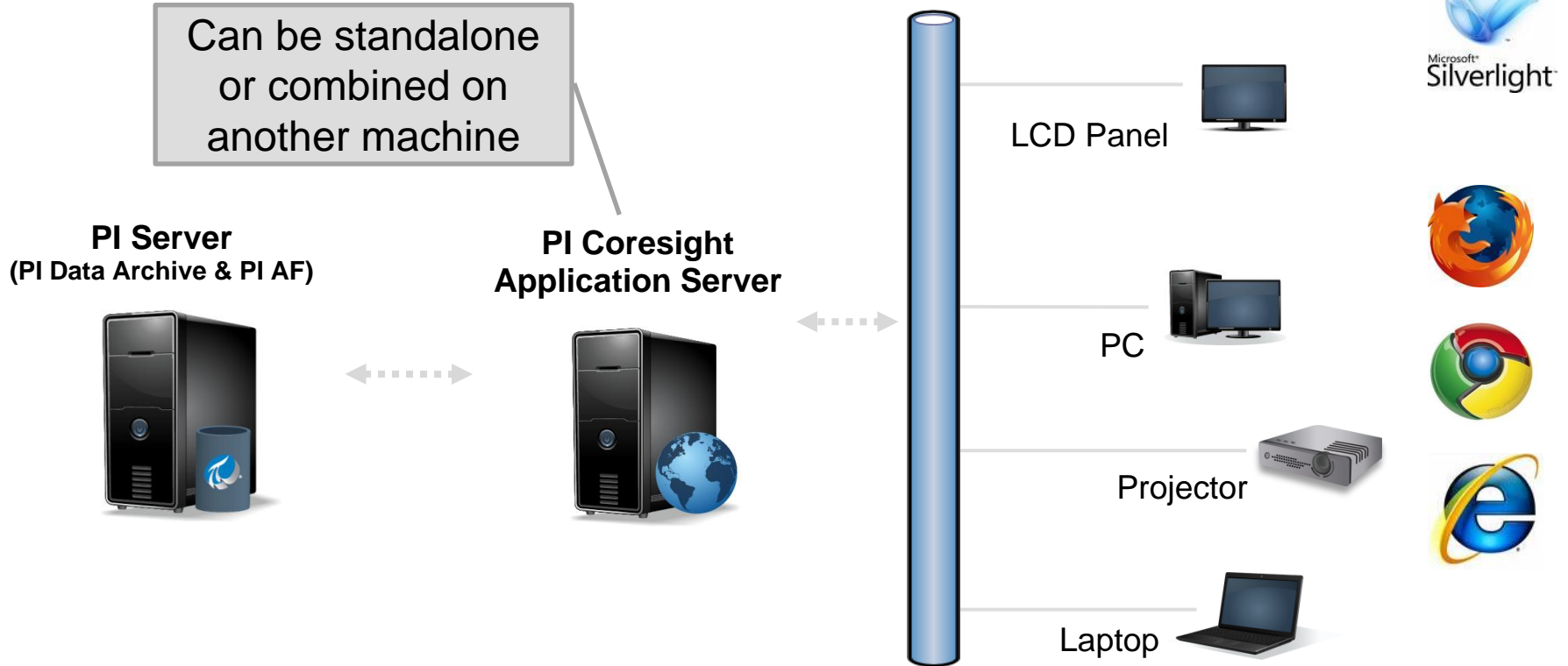
- Select servers
- View usage
- Re-assign displays

The screenshot shows the 'PI Coresight Administration Site' interface. At the top, it says 'Welcome to the PI Coresight Administration Site' and 'Welcome OS!\tlebay'. Below this is a navigation bar with links: 'Home', 'PI Servers Configuration' (highlighted), 'PI AF Servers/Databases Configuration', 'PI Coresight Configuration', 'Reassign PI Coresight Displays', 'PI Coresight Reports', and 'Version Information'. The main content area is titled 'Registered PI Servers' and shows a message: 'Connecting to PI Servers as NT AUTHORITY\NETWORK SERVICE'. Below this is a table of registered servers with columns for Name, Version, Status, and Access. The table lists five servers: devsql, Philly, sdasaiah, symbolpi, and Trenton. Each server has a 'Test Connection' button next to it. A 'Submit changes' button is at the bottom of the table.

| Name     | Version       | Status | Access                                      |                 |
|----------|---------------|--------|---|-----------------|
| devsql   |               | ?      | <input type="checkbox"/> Allowed            | Test Connection |
| Philly   | PI 3.4.385.59 | ✓      | <input checked="" type="checkbox"/> Allowed | Test Connection |
| sdasaiah |               | ?      | <input type="checkbox"/> Allowed            | Test Connection |
| symbolpi |               | ?      | <input type="checkbox"/> Allowed            | Test Connection |
| Trenton  | PI 3.4.375.80 | ✓      | <input checked="" type="checkbox"/> Allowed | Test Connection |

Submit changes

# PI Coresight Architecture



# PI Coresight Server Requirements

## PI Coresight website and PI Coresight Admin website

- Windows Server 2008 R2
  - Standard or Enterprise Edition
  - Application Server Role with IIS (Internet Information Server) 7.0 required
- Microsoft SQL Server 2008 R2
  - Standard, Enterprise, Express
  - Can be installed locally or remote

### Hardware Recommendation

| # of User       | 1 to 50 | 50 to 250 | 250-500 |
|-----------------|---------|-----------|---------|
| CPU (Cores)     | 2       | 4         | 8       |
| CPU Speed (GHz) | 2       | 2.5       | 3       |
| Memory          | 4       | 8         | 16      |
| Disk (GB)       | .5      | 1.5       | 2.5     |

## PI Server

- PI Server
  - Windows Integrated Security requires v.3.4.380 and above
- PI AF- recommended for best experience but not required
  - PI AF 2010 R2 (v.2.3) and above
- PI Server 2010 R3 strongly recommended



Thank you

