

A decorative graphic on the left side of the slide, composed of a grid of blue triangles of varying sizes, some pointing up and some down, creating a pixelated or mosaic-like effect.

The PI System as an Infrastructure: Overview of PI System 2010

Presented by

Frank Batke
Ravi Shettar

Infrastructure: Characteristics and Expectations

Real-time Infrastructure Delivers Opportunities

Electrical Power



Communications



Transportation




- **Valuable** – delivers a recognized benefit
- **Reliable and Secure** – always available, safe and trusted
- **Accessible** – adaptable to innovation, easy to use
- **Contextual** - organized to be effective, efficient, and extendable
- **Sustainable** – must be able to last and adapt to change



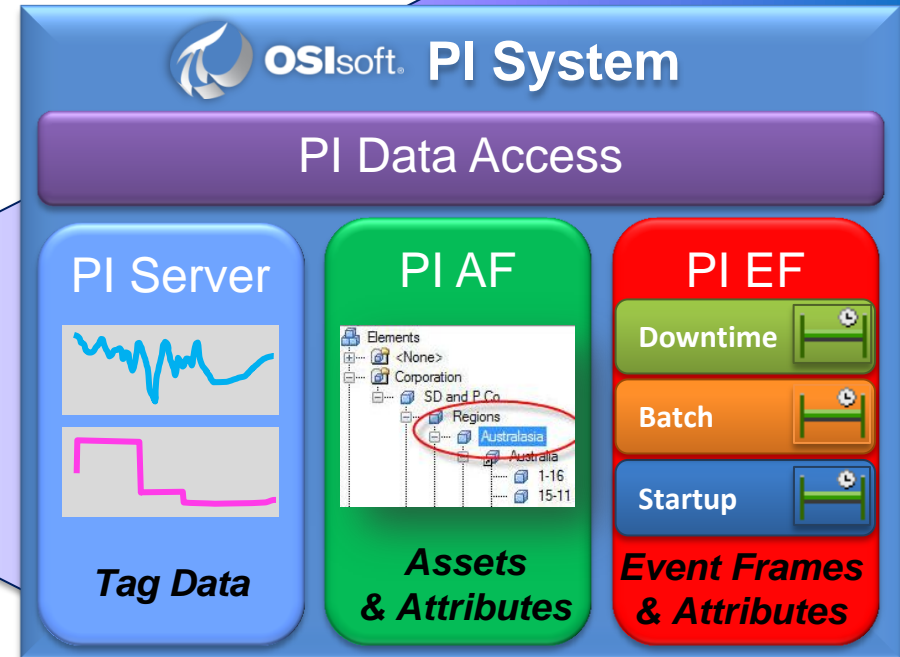
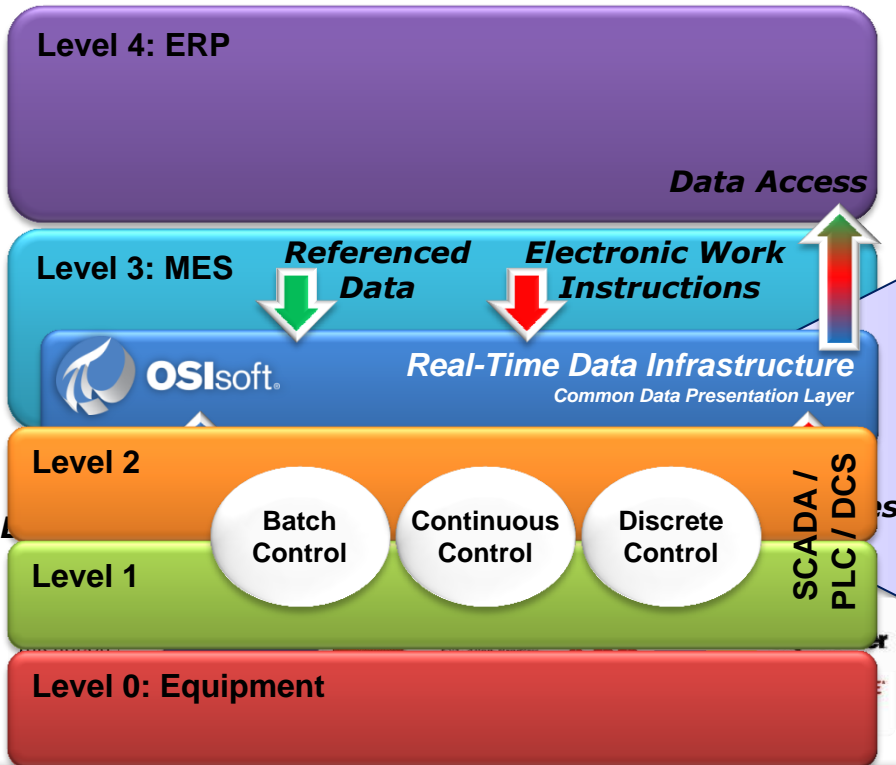
What is The PI System ?

The industry standard in enterprise infrastructure for management of real-time data and events



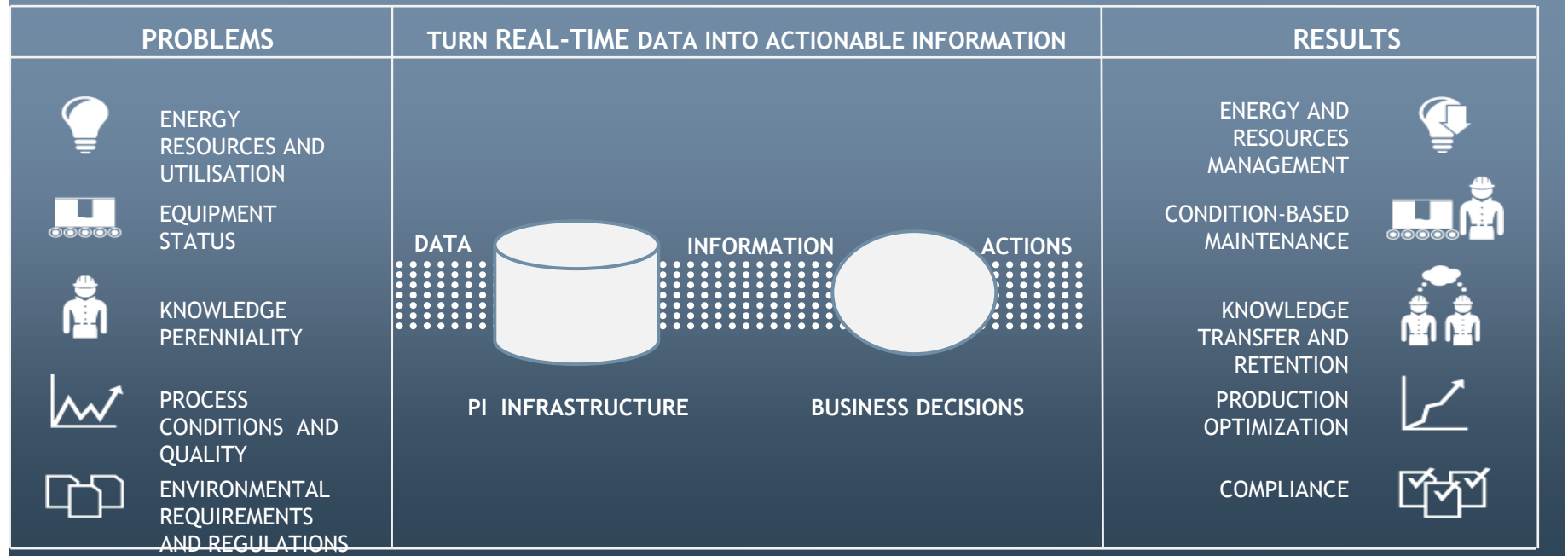
Aggregation – PI System Data Infrastructure

ISA S95



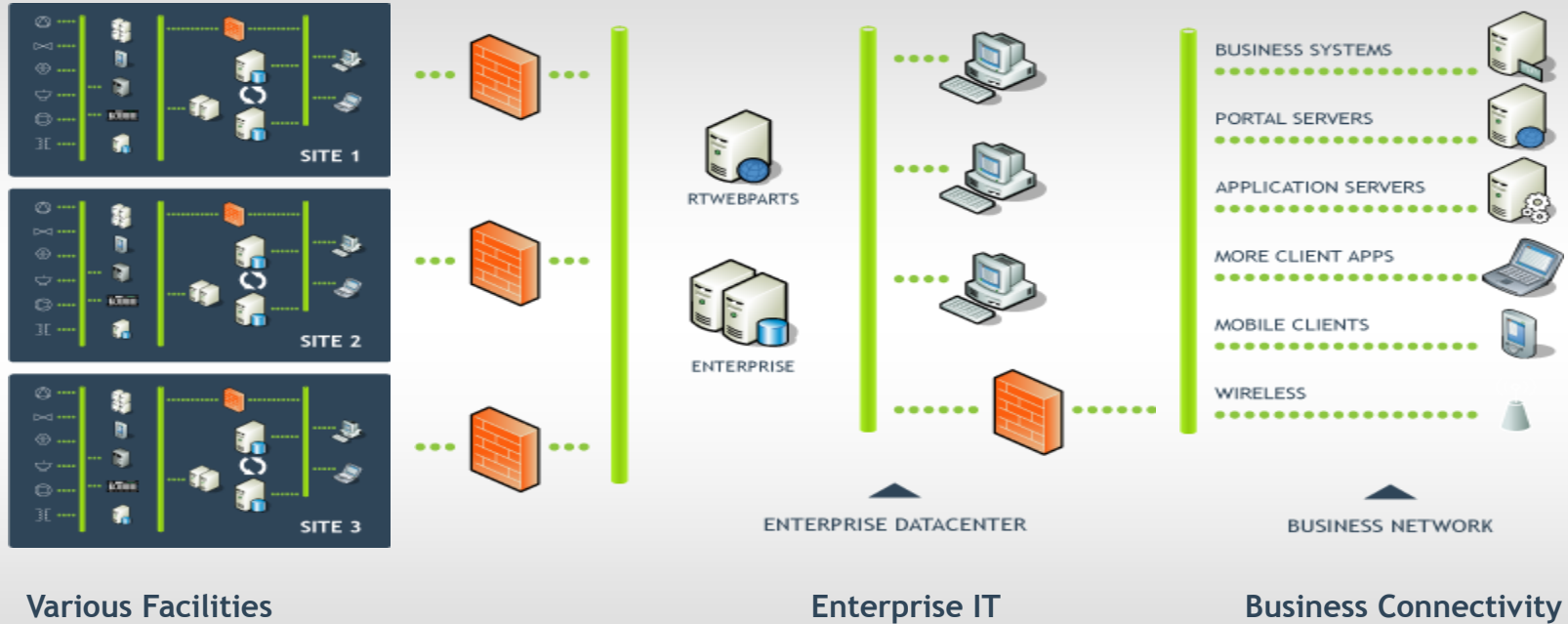
Turn Real-time Data Into Actionable Information

THE PI TECHNOLOGY GIVES THE POSSIBILITY TO PUT IN PLACE BUSINESS SOLUTIONS



Typical Architecture:

Enterprise level

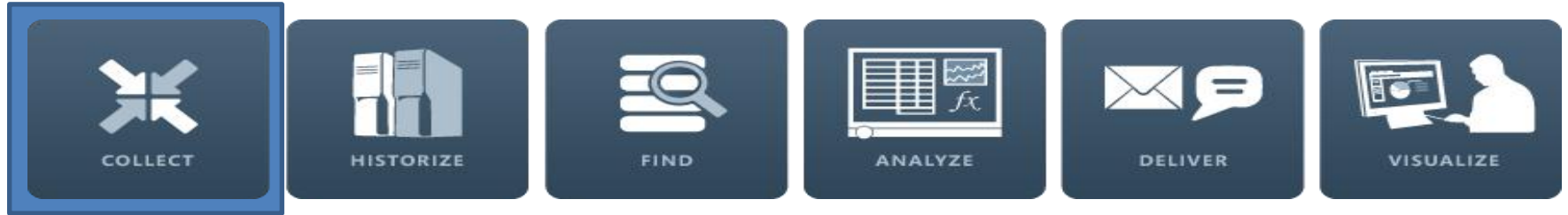


PI System Overview



The OSIsoft PI System is the highly scalable and secure real-time and event infrastructure that connects people with the right operational and manufacturing information at the right time in order to *analyze*, *collaborate*, and *make smart decisions*

The PI System: Collect

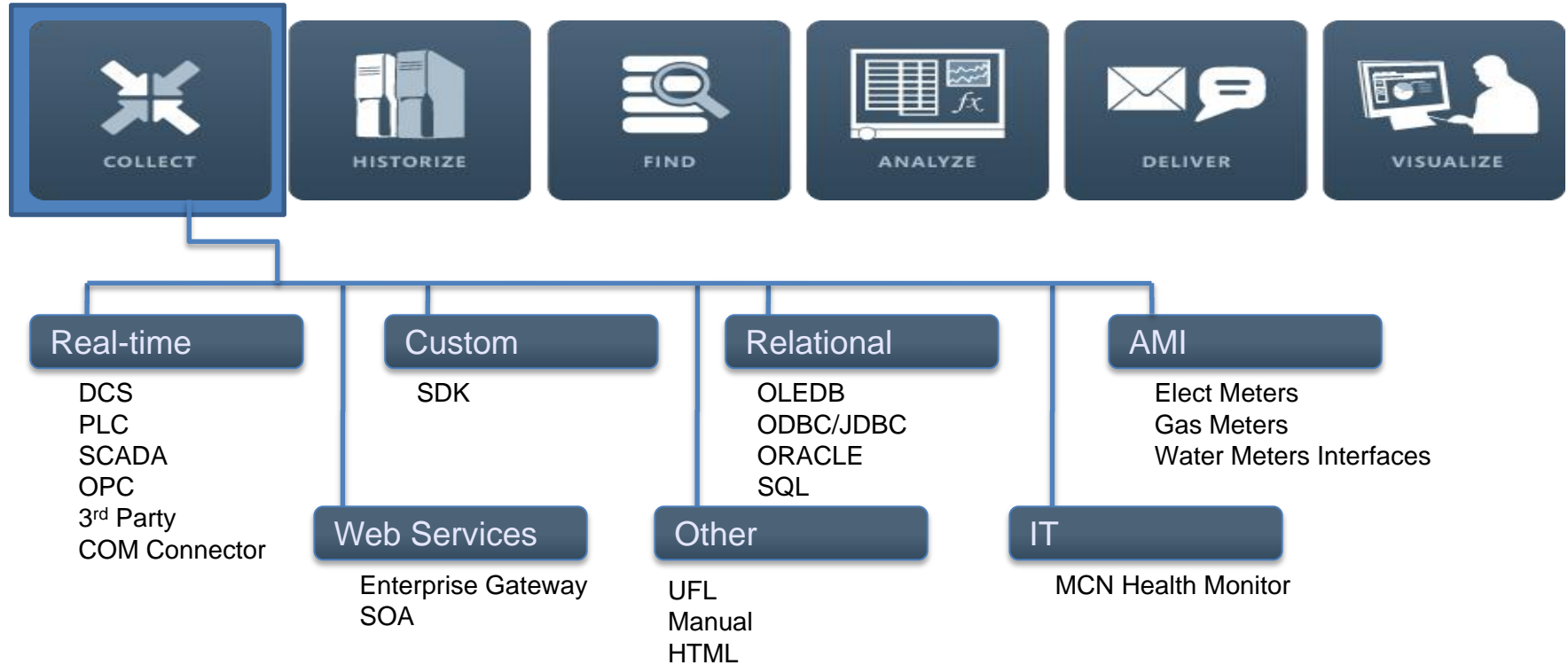


The PI System collects real-time data from multiple sources every second, minute or day and stores the values forever.

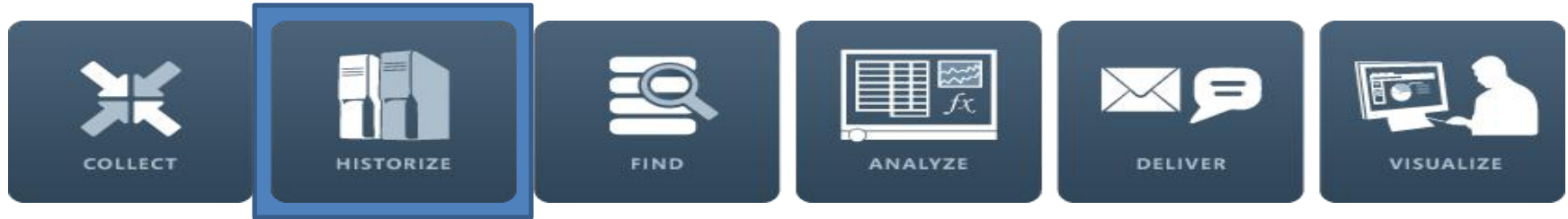
- Measures and aggregates a broad range of data types
- Handles both time-series data and events
- Secures the access and transmission of the data
- Data collection redundancy and high availability

The PI System can connect to more than 450 different systems

The PI System: Collect



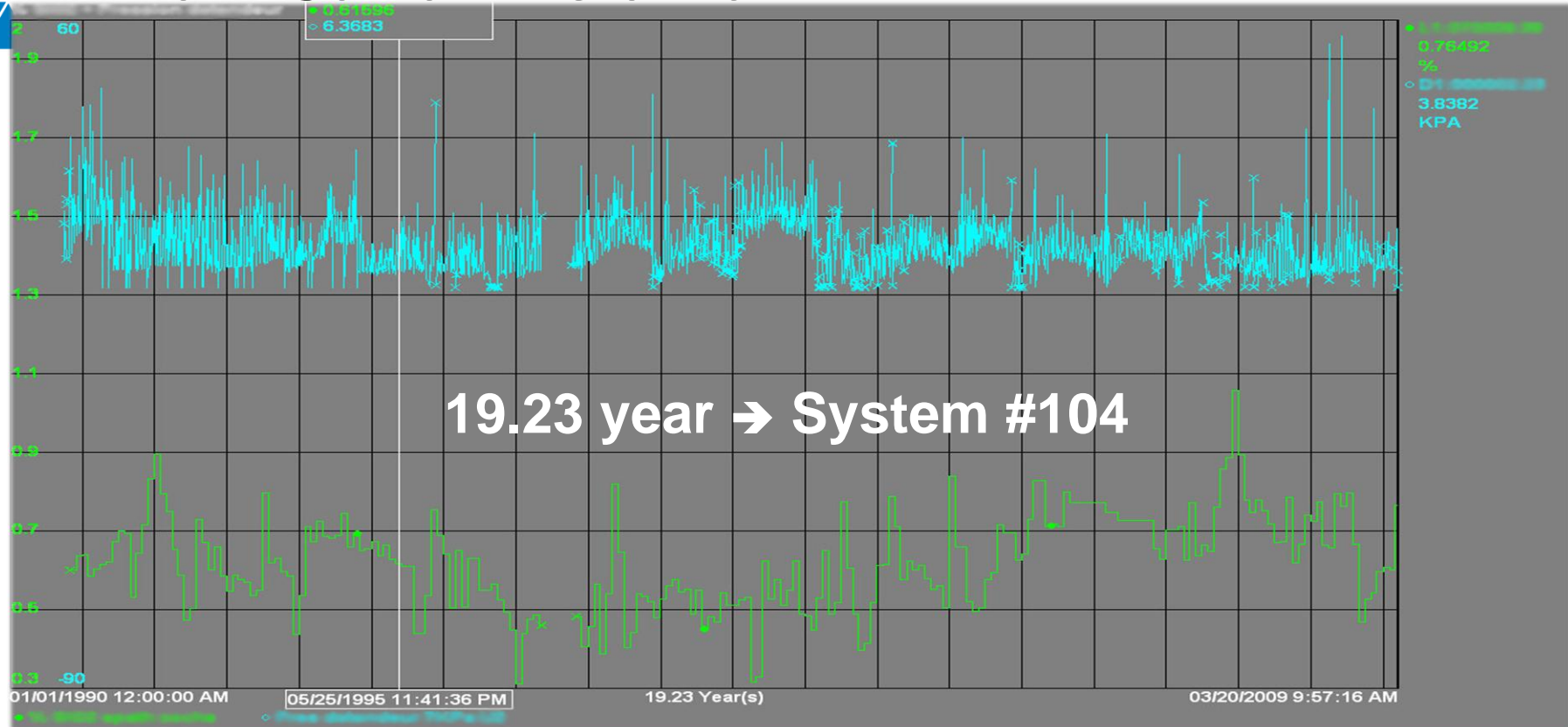
The PI System: Historize



The PI Server can

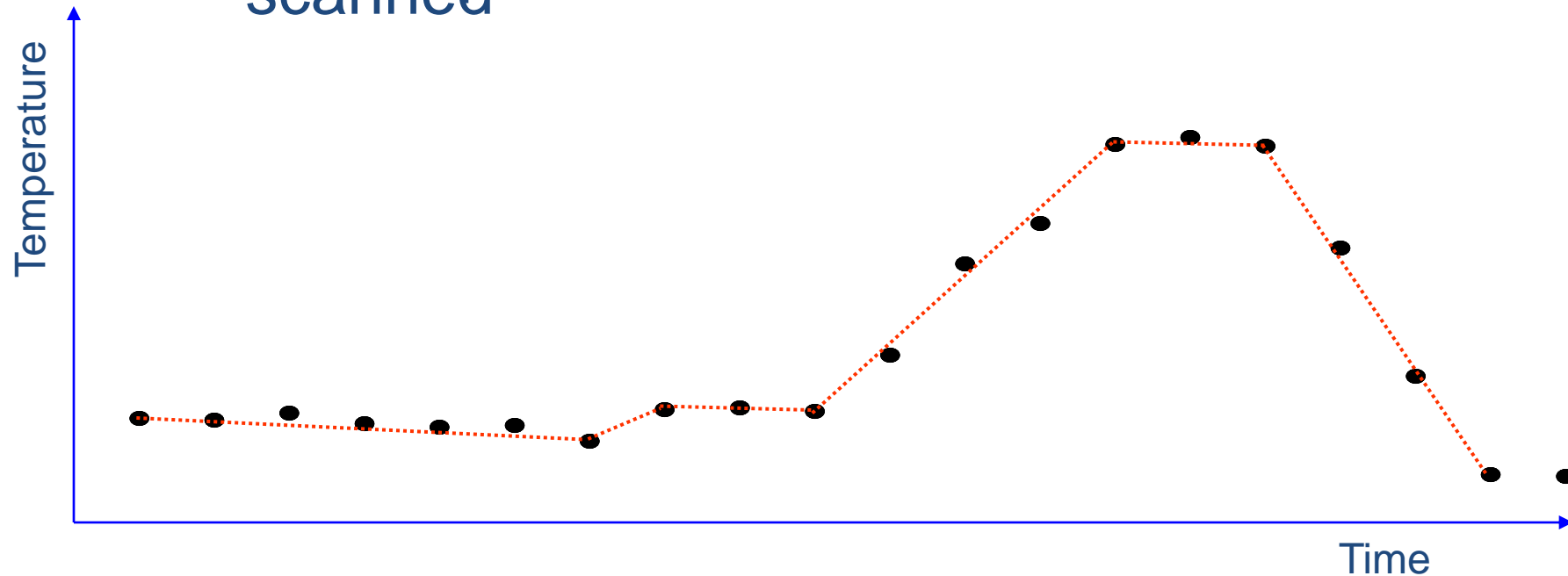
- Archive the data and keep it online for decades
- Store and retrieve the data efficiently
- Securely control access to the data
- Distribute the data to client applications
- Expose the data supporting standard communication protocols

The PI Server: Historize!

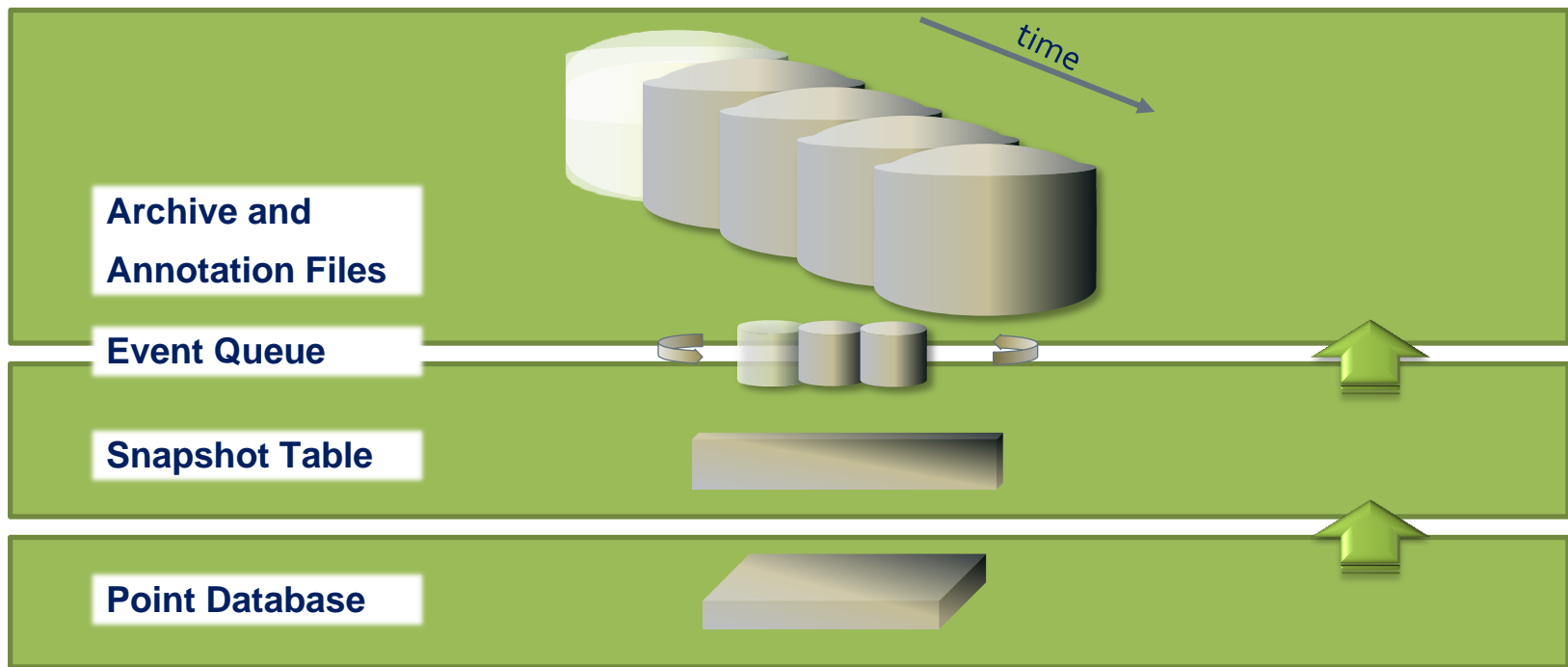


Compression

Raw values
After Exception
After Compression
Scanned



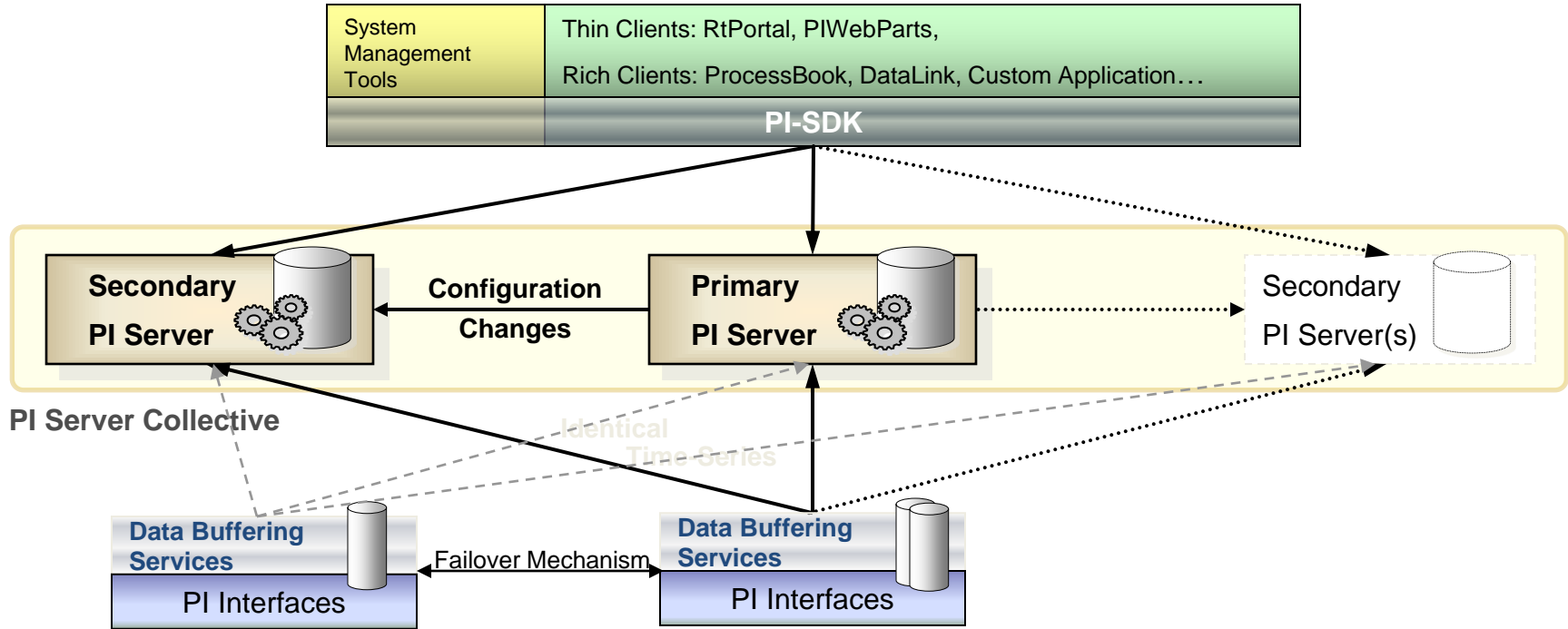
Event Storage



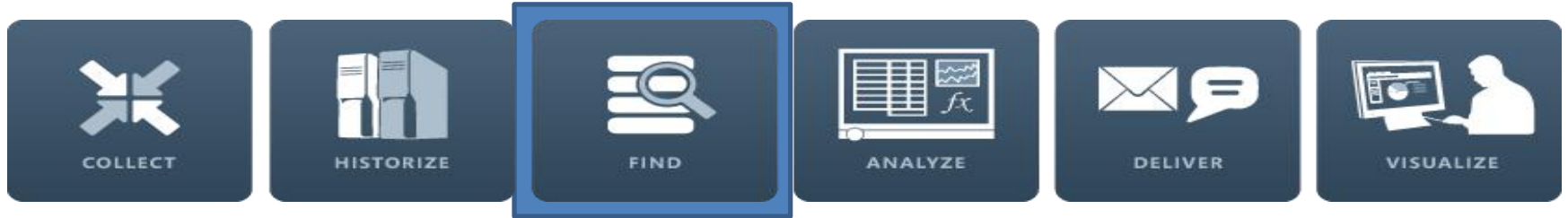
Event :=

Tag	Timestamp	Value	Questionable	Substituted	Annotation
Where ?	When ?	What ?	Quality ?	Changed ?	Add. Bit stream

OSIsoft HA Technology

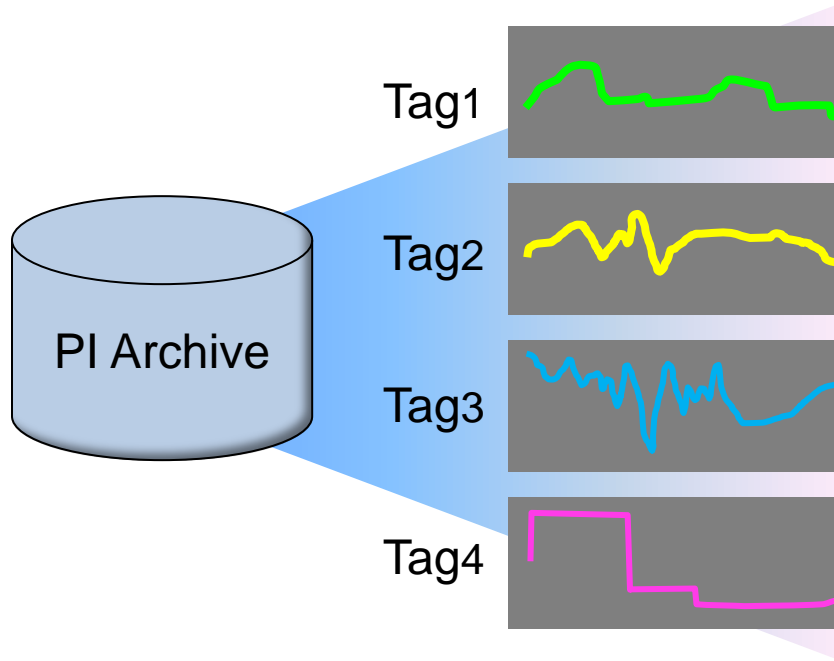


The PI System: Find

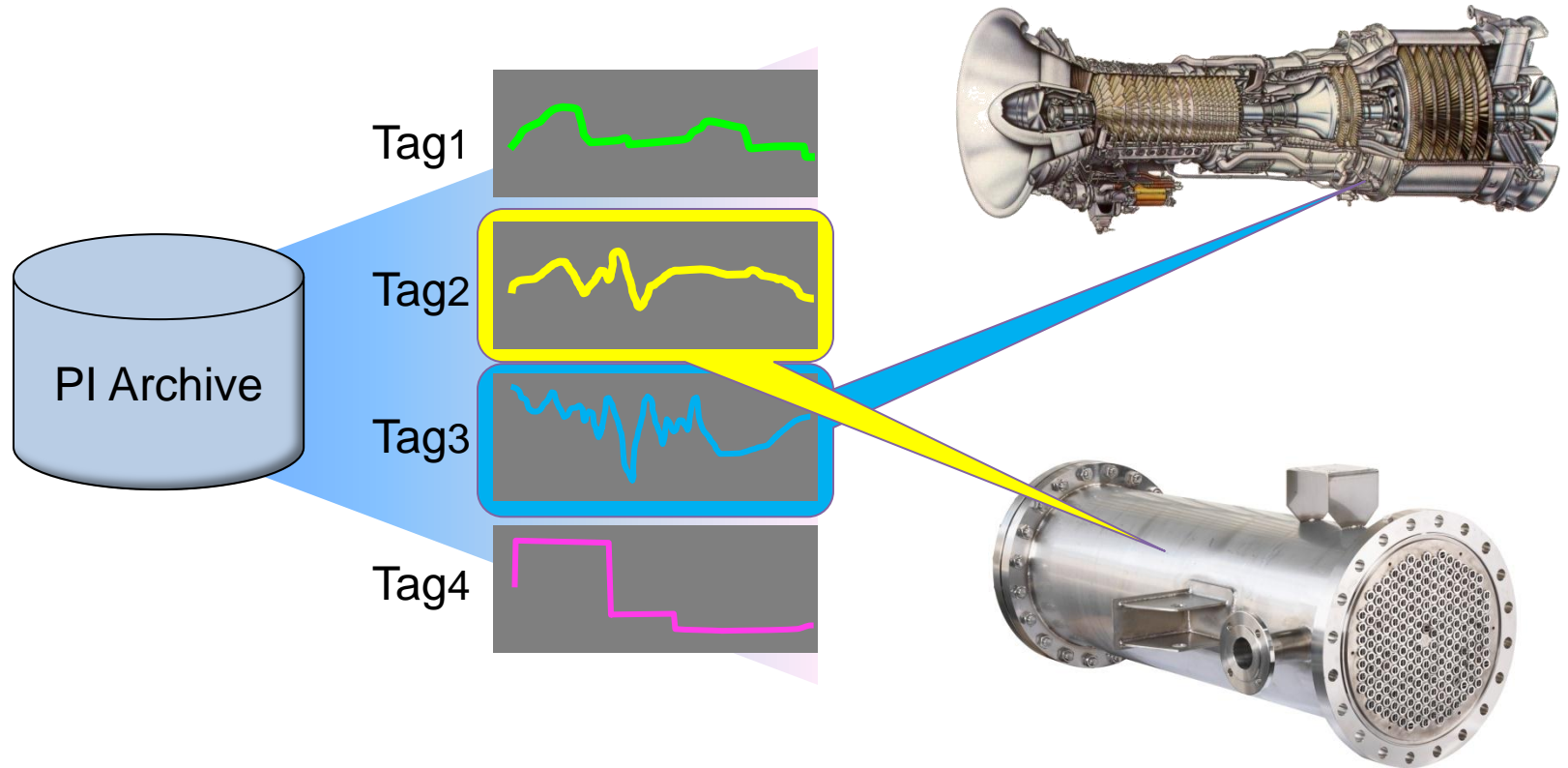


- Create and store your asset hierarchy
- Provide easily understood asset and attribute names for ease of use
- Link to multiple data sources
- Provide a platform for analysis or applications
- Securely control access to the data
- Distribute the data to client applications
- Expose the data supporting standard communication protocols

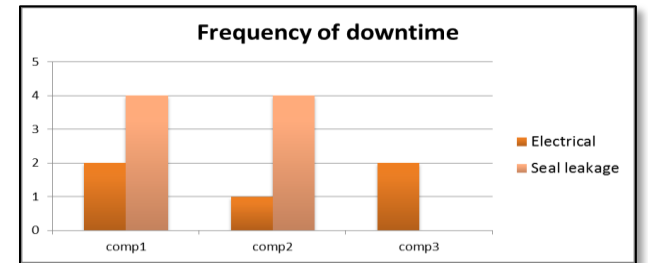
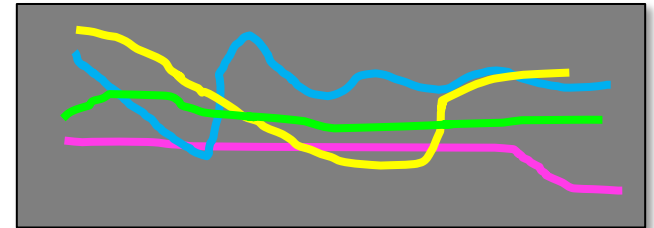
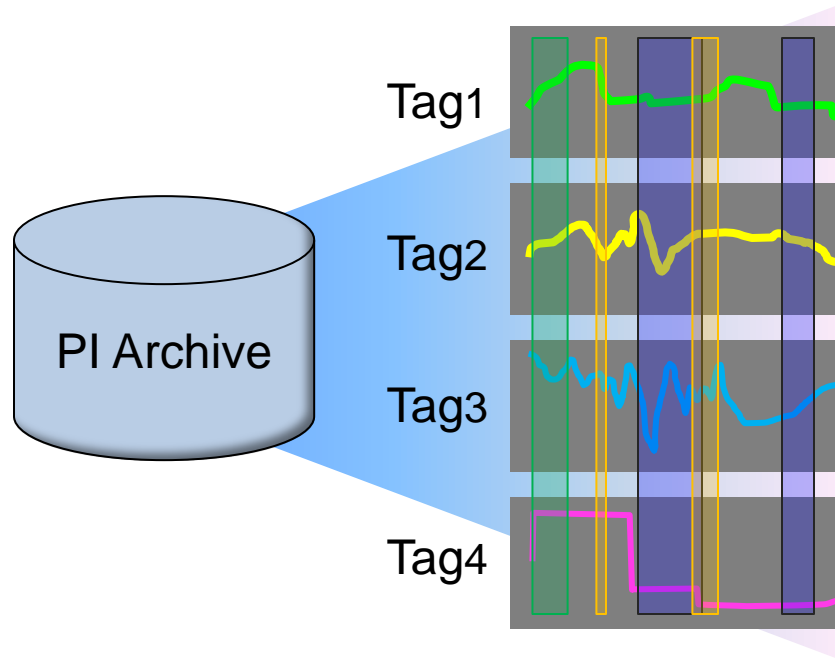
PI Server – Time series data and Tags



Assets help you find the right Tags



Event Frames help you find the right time periods



Asset centric

- Data structured and organized by asset
- Spans multiple PI Systems
- Incorporates non time series data

Non Time Series Data Sources

Vendor Specific II
Honeywell
Inter

SNMP

PI AF

Asset-Equipment Centric access to the Data

Honeywe

SCM

RDBMS

MES

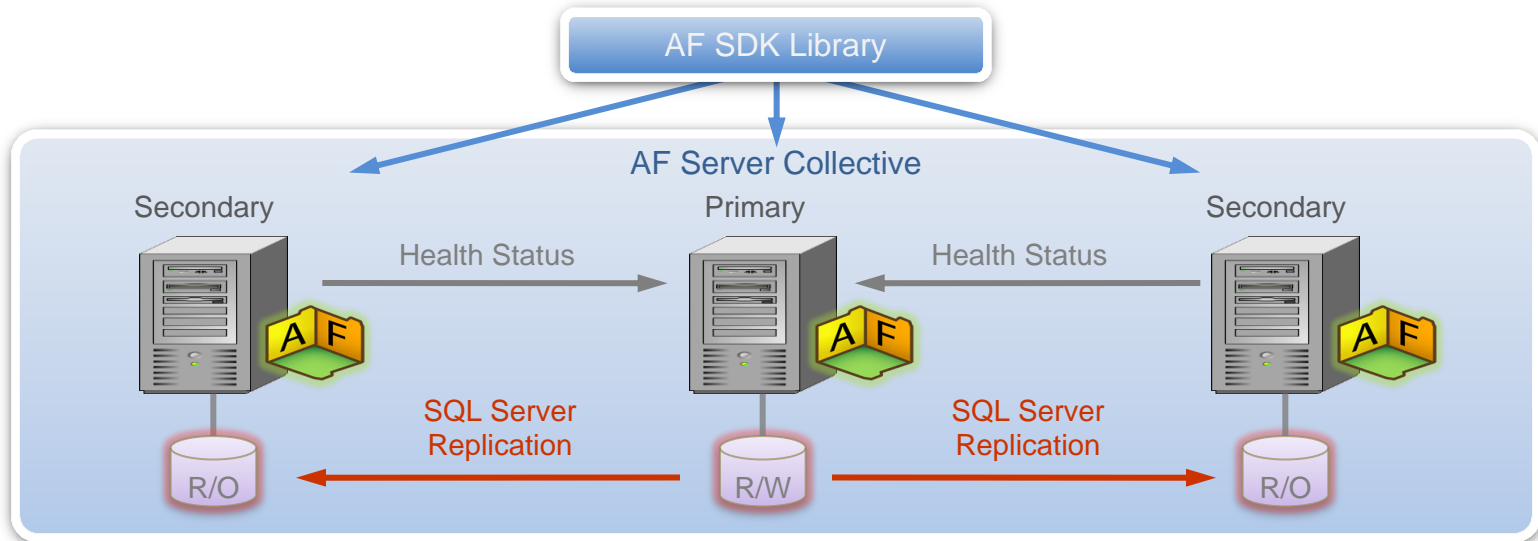
AF 2.x HA Collective



PI System
Explorer



PI Notifications, AF-based PI Clients
(WebParts, ProcessBook, DataLink, etc.)



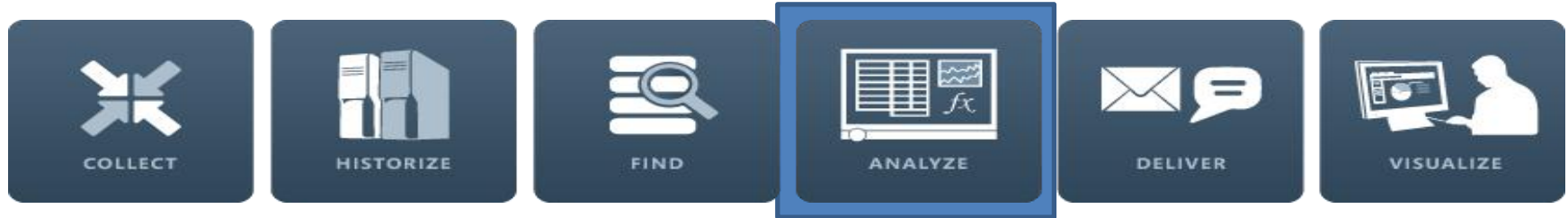


AZ SONRA.....

More details will be in the talk

Do“More with Less“ using PI AF & PI Notifications

The PI System: Analyze



Convert real-time data into actionable information

- CEP (Complex Event Processing) & Post processing
- Equations, calculations, aggregations, filters, business rules

Monitor business & operational performance in real time

Analyze



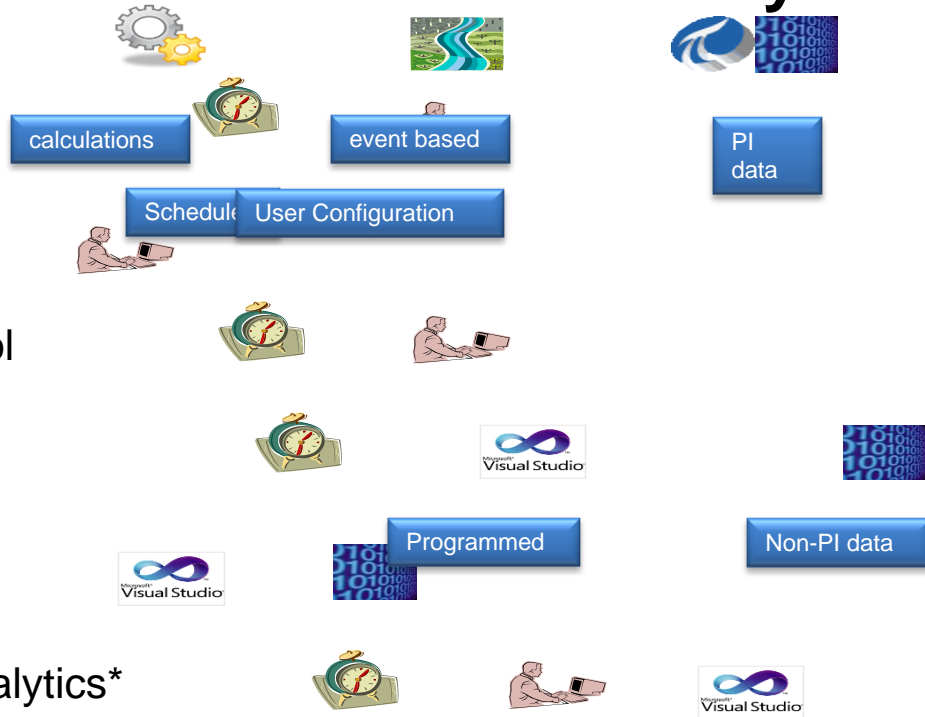
- Combine data elements together
- Aggregate totals and averages
- Filter out irrelevant data.
- Includes both configured and programmed analytics
- Enables organizations to continually improve by analyzing data and obtaining insight into their operations.

BATCH ID	PI MIN	PI AVG	PI MAX	PI RANGE	PI STDEV
MP_20090911_115632	147.1	172.6	205.6	58.5	13.6
MP_20090910_204531	266.7	316.9	366.9	100.2	26.5
MP_20090910_170536	32.8	102.5	230.0	197.2	36.4
MP_20090910_160842	141.8	188.3	220.1	78.4	21.6
MP_20090909_220449	230.0	328.4	426.3	196.3	56.2
MP_20090909_153813	201.5	256.4	289.0	87.5	18.2
MP_20090909_142545	264.1	291.1	327.9	63.8	14.7
MP_20090909_132727	295.4	338.1	377.1	81.7	25.4
MP_20090902_171845	32.3	129.7	292.8	260.5	88.1
MP_20090902_153523	108.6	184.5	251.6	143.0	35.2
MP_20090901_204325	311.9	363.5	409.4	97.4	23.4
MP_20090831_194329	340.6	361.8	396.0	55.4	13.2

MIN	AVG	MAX	MAX	MAX
32.3	252.8	426.3	260.5	88.1

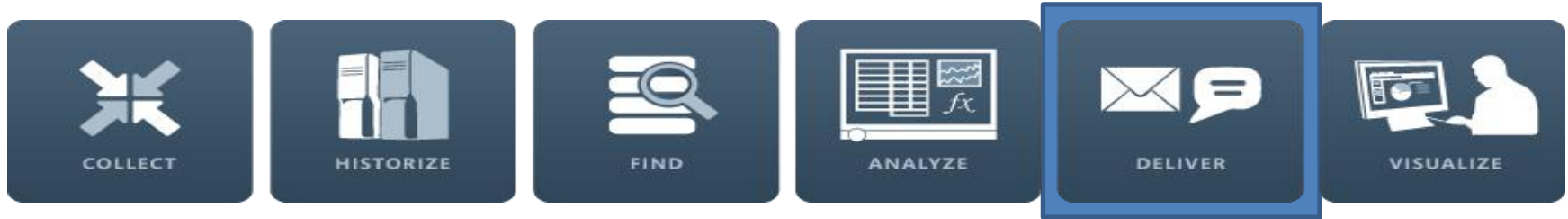
PI Analytics – Components and Functionality

- Performance Equations
- Totalizers
- Alarms/Statistical Quality Control
- Advanced Computing Engine
- PI for StreamInsight
- Asset Framework supported Analytics*



* Future products

The PI System: Deliver



- PI Notifications – deliver exceptions to humans or push to other systems
- PI Data Access – allow applications to pull data from the PI System
 - SQL Data Access
 - Web Services
 - OPC Servers
 - Software Development Kits



PI Data Access: The 2010 Wave



Microsoft®
BizTalk® Server



Microsoft®
SQL Server®
Analysis/Reporting Service



Microsoft®
SharePoint®



PI JDBC
2010

PI Web
Services 2010

PI OLEDB
Enterprise 2010

PI OPC DA/HDA
Server 2010

OSIsoft SDKs



Asset Information /
Metadata

Notifications
Analytics

Relational / Non Time Series



PI Server



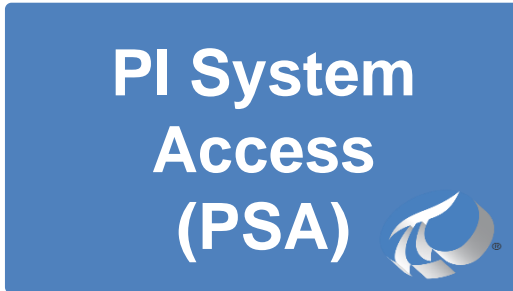
PI Server Collective

Time Series Data

Development → Runtime



```
AFTimeRange tr = new AFTimeRange(new AFTime(tex  
AFValues vals = _afDB.Elements["Pump123"].Attri  
  
lstValues.Items.Clear();  
foreach(AFValue val in vals)  
{  
  
    lstValues.Items.Add(val.Value.ToString() +  
}
```

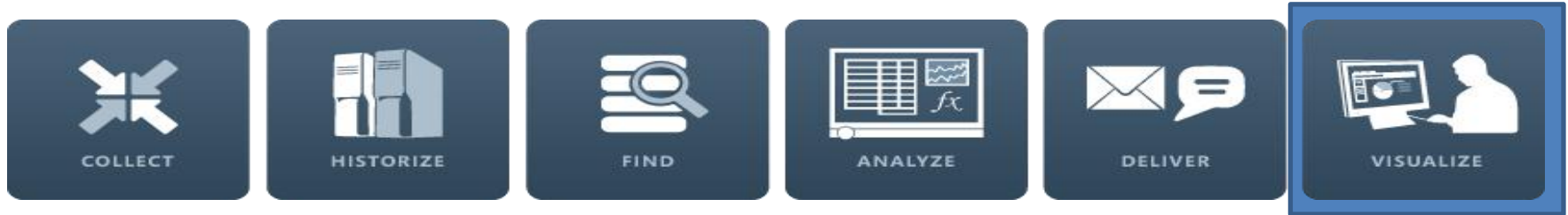


Products Covered by PSA

- OSIssoft SDKs
 - PI SDK
 - AF SDK (includes AN/EF SDK)
- SQL Family ~~PI~~ **OLEDB Enterprise**
 - PI OLEDB
 - PI JDBC
 - PI ODBC
- PI OPC DA/HDA Server
- PI Web Services
- PI API



The PI System: Visualize



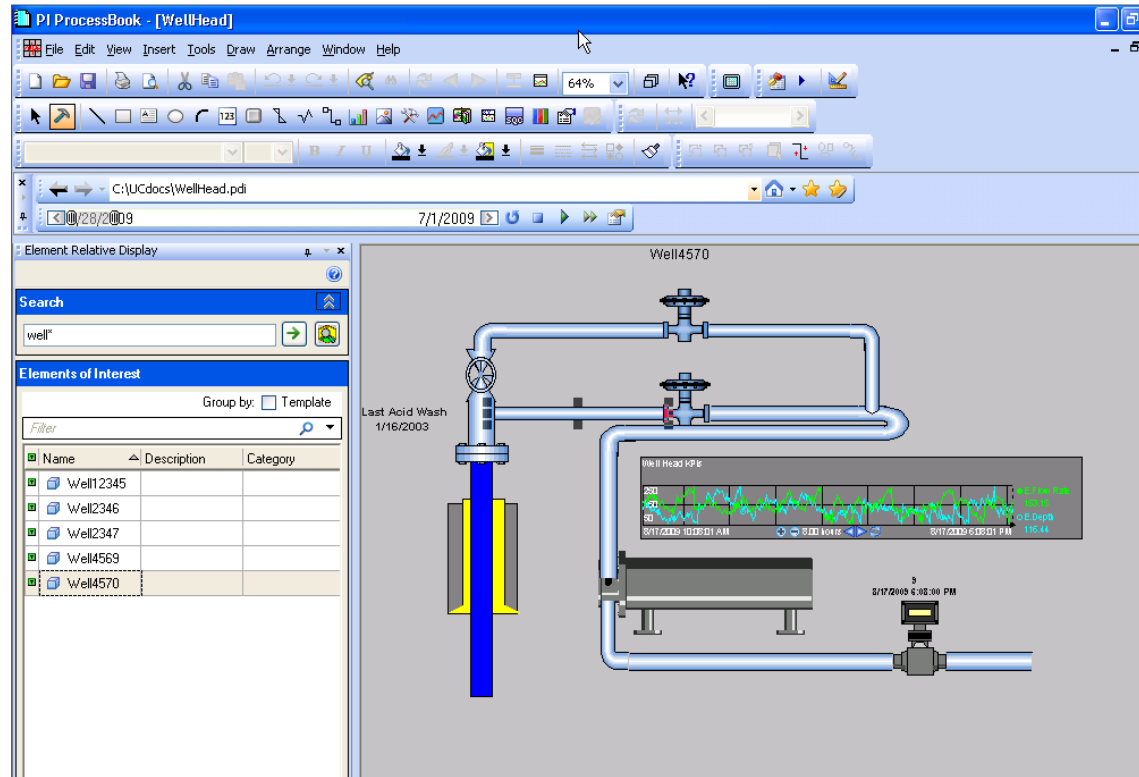
The decision makers can use the well-known tools like:

- Just Internet Browser with Silverlight
- OSIsoft PI ProcessBook
- Just Microsoft Office environment Microsoft Office Excel or Microsoft Office SharePoint
- SAP Enterprise Portal

The Visuals stimulates the creativity and gives solutions to end-users for solving business problems.

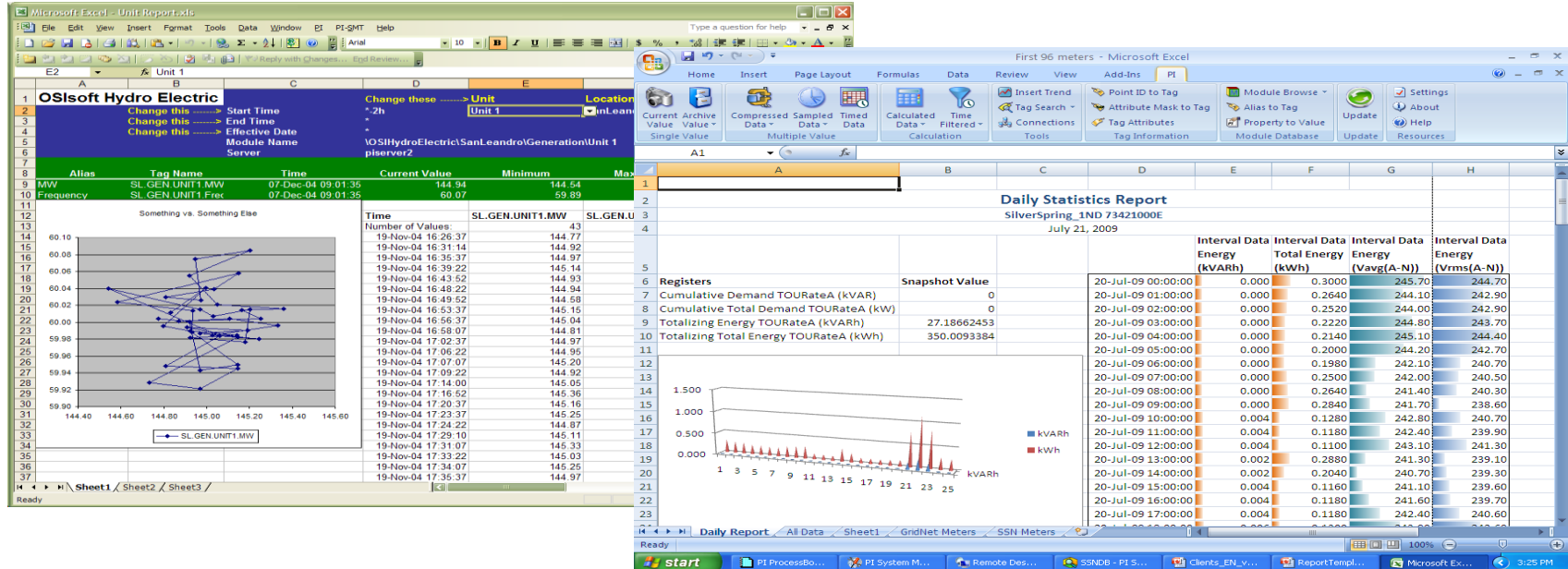
PI ProcessBook

- Draw intuitive graphical diagrams and, include live data
- Make one diagram refer to many similar units or assets
- Easily trend data
- View annotations to data points
- Intuitive “status” indicator displays health of data on the display
- Large symbol library included to make drawings quickly
- Import graphics for customized displays.



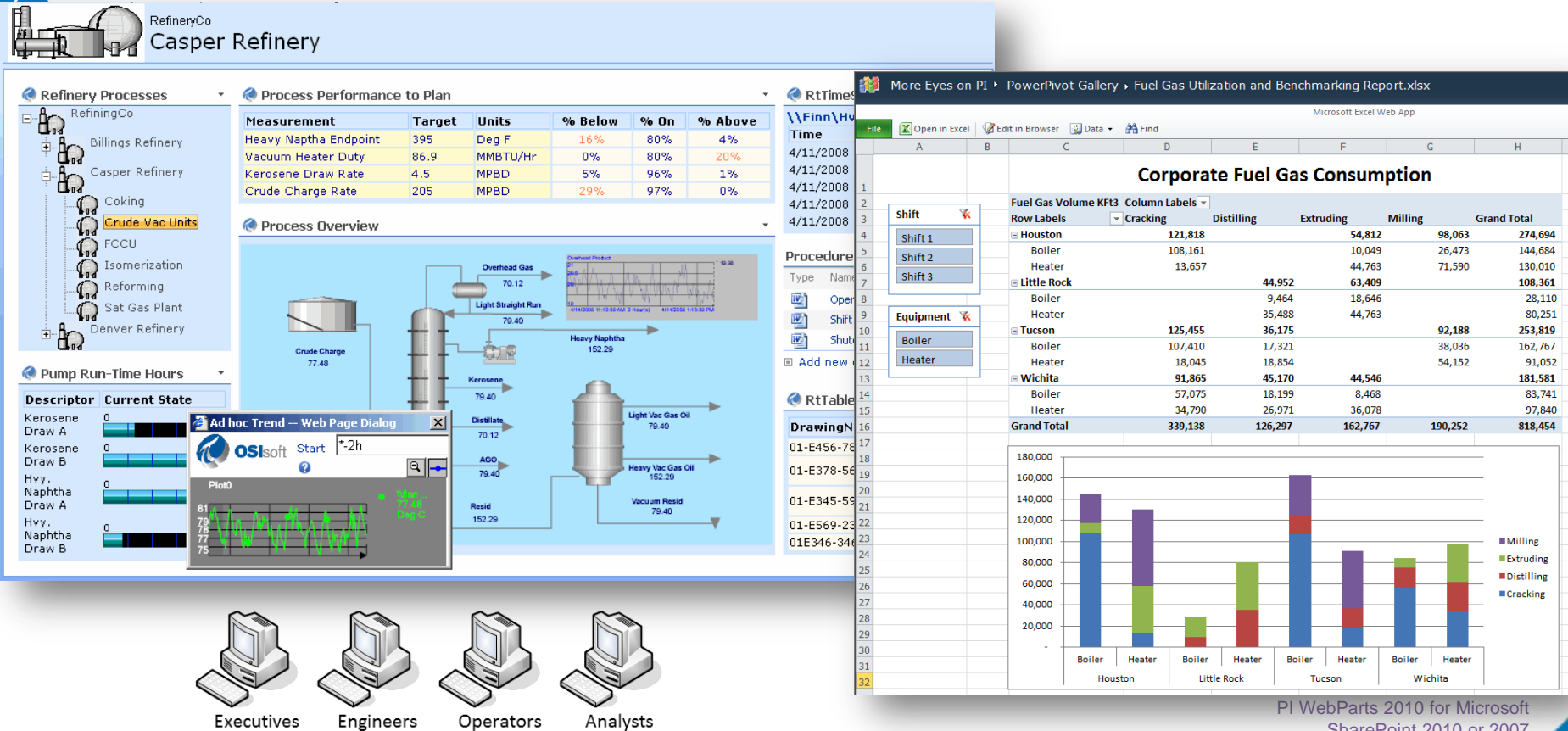
PI DataLink + Excel 2010 + PowerPivot

- PI System Add-In for Microsoft Excel
- Create interactive reports and analyses in a spreadsheet
- Worksheets update
- Worksheets can be published
- SharePoint workflow integration

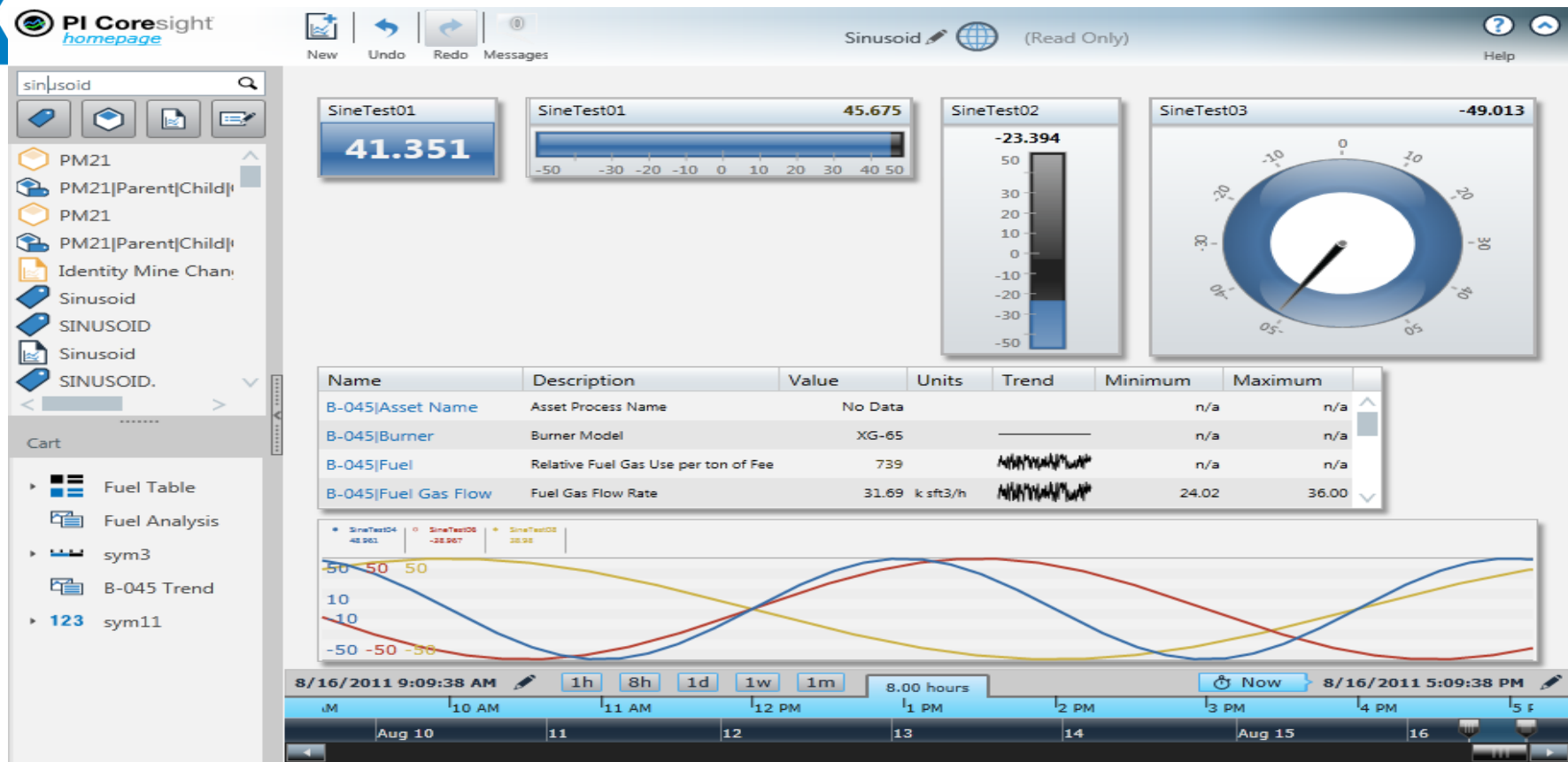


Providing tools to create visual summaries of the data to alert decision makers and call attention to the most important information of the moment.

Visualization – PI WebParts & Microsoft SharePoint



PI Coresight User Interface





AZ SONRA.....

More details will be in the talk

The Fastest, Easiest Way to Visualize
Your PI System Data with PI Coresight



Summary



PI System 2010



PI System 2010

PI Notifications



PI Analytics



PE

Totalizer

PI ACE

PI Asset Framework



PI Archives



Real-time Interfaces

Real-Time Data

DCS / PLC / SCADA / OPC
HISTORIANS /
INTERFACES

Custom Data

APIs / SDKs

IT Data

IT MONITOR

Relational Data

OLEDDB / ODBC
SQL SERVER /
ORACLE

Web Services

SOA / EXTERNAL DATA
LEGACY APPS

Windows integrated security



High availability



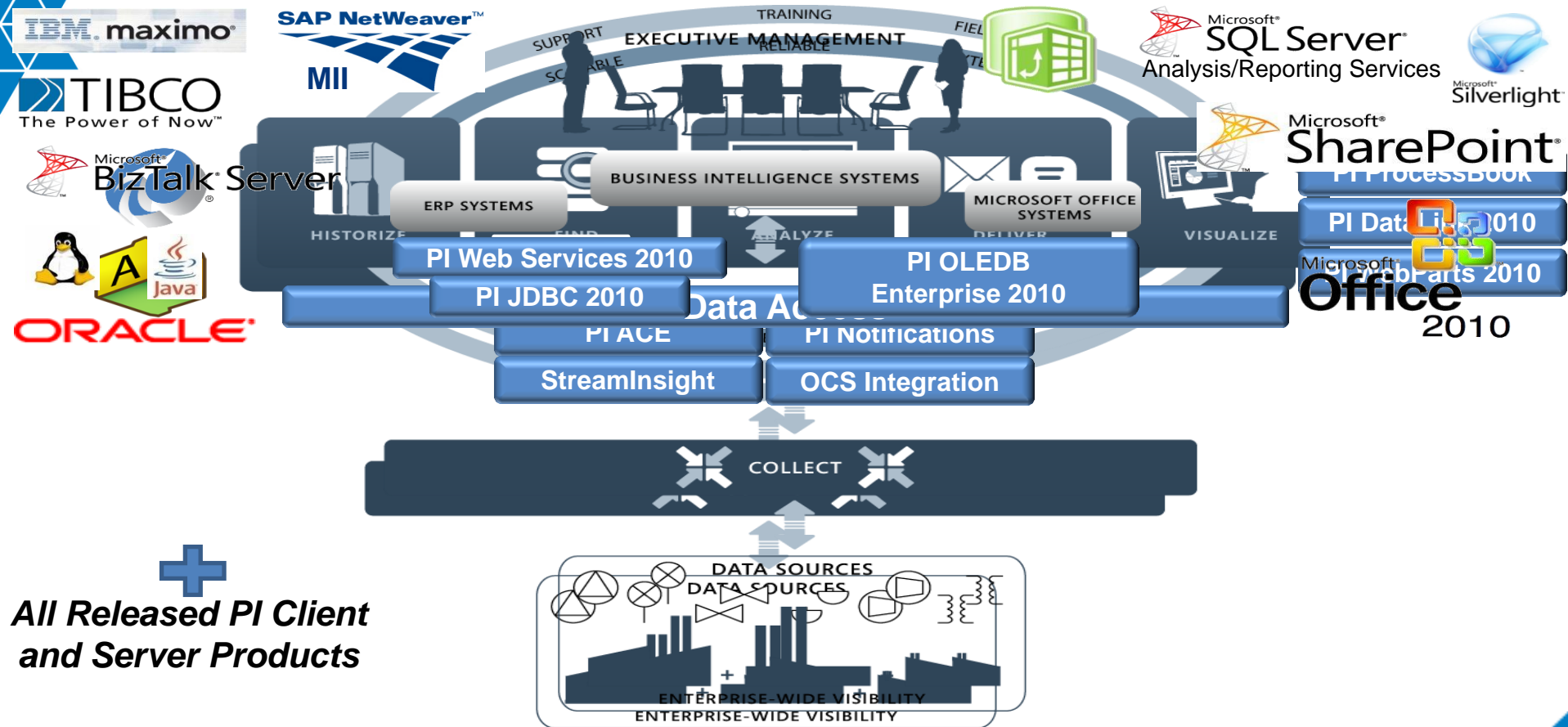
64-bit product



Virtualization



PI System 2010



**All Released PI Client
and Server Products**



Thank you