



**OSI**soft.

# REGIONAL SEMINAR

E M E A

2012



**PI Coresight™**

# **PI Coresight: The Fastest, Easiest Way to Visualize PI System Data**

Presented by

**Ravi Shettar**  
Technical Support Lead  
OSIsoft Technologies Middle East SPC, Bahrain

# What is PI Coresight?



A web-based product for:

- Ad-hoc analysis
- Quick investigation
- Collaboration
- Rapid deployment



# Where Does PI Coresight Fit?

## New Product!

- ✓ Complementary to other PI System products
- ✓ Does Not Replace any existing PI System product
- **PI Coresight = Ad-Hoc Analysis and Collaboration**
- **PI WebParts** = Composite applications in SharePoint
- **PI ProcessBook** = Process Monitoring & Rich Authoring
- **PI DataLink** = Reporting and Table-Based analytics

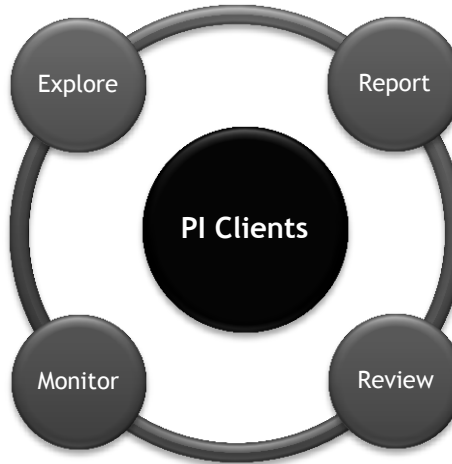
# Where Does PI Coresight Fit?



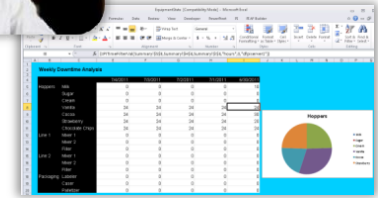
**PI Coresight:**  
*Ad Hoc Analysis & Collaboration*



**PI ProcessBook:**  
Display authoring and  
Process monitoring



**PI DataLink:**  
Reporting and table  
based analytics in  
Microsoft Excel

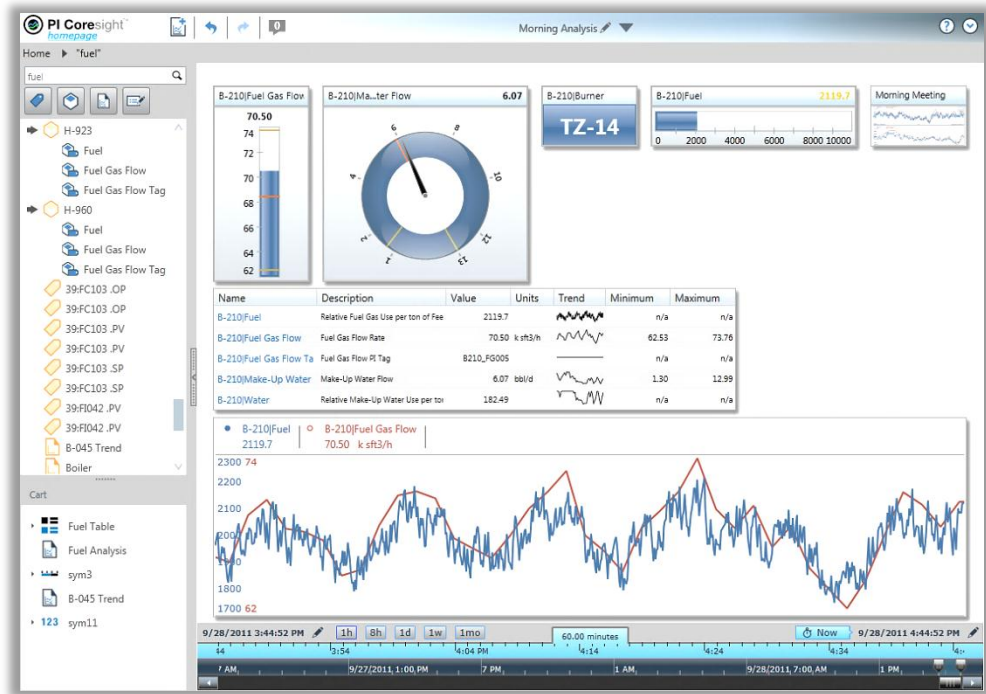


**PI WebParts:** Composite  
applications in SharePoint



# Key Features

- **Search the PI System (including PI AF) and displays together**
  - No need to understand tag names
- **Very fast display creation**
  - Save time
- **Intuitive user interface**
  - Can be used by a wide range of users
- **Easily share displays**
  - Leverage insights across the organization
- **Easy to deploy and maintain**
  - IT-friendly - always have the current version
- **Anywhere, Anytime**
  - All you need is a web browser



# Easy to Deploy and Maintain

- Single server to install and maintain
- Clients always have the most up-to-date version of PI Coresight
- Administrator tools to manage the system
  - Reassign displays to a different user
  - Manage connections to PI System servers
  - Report number of users and displays
- Permission managed with Active Directory
  - Client credentials are also passed to the PI System

PI Coresight  
Server



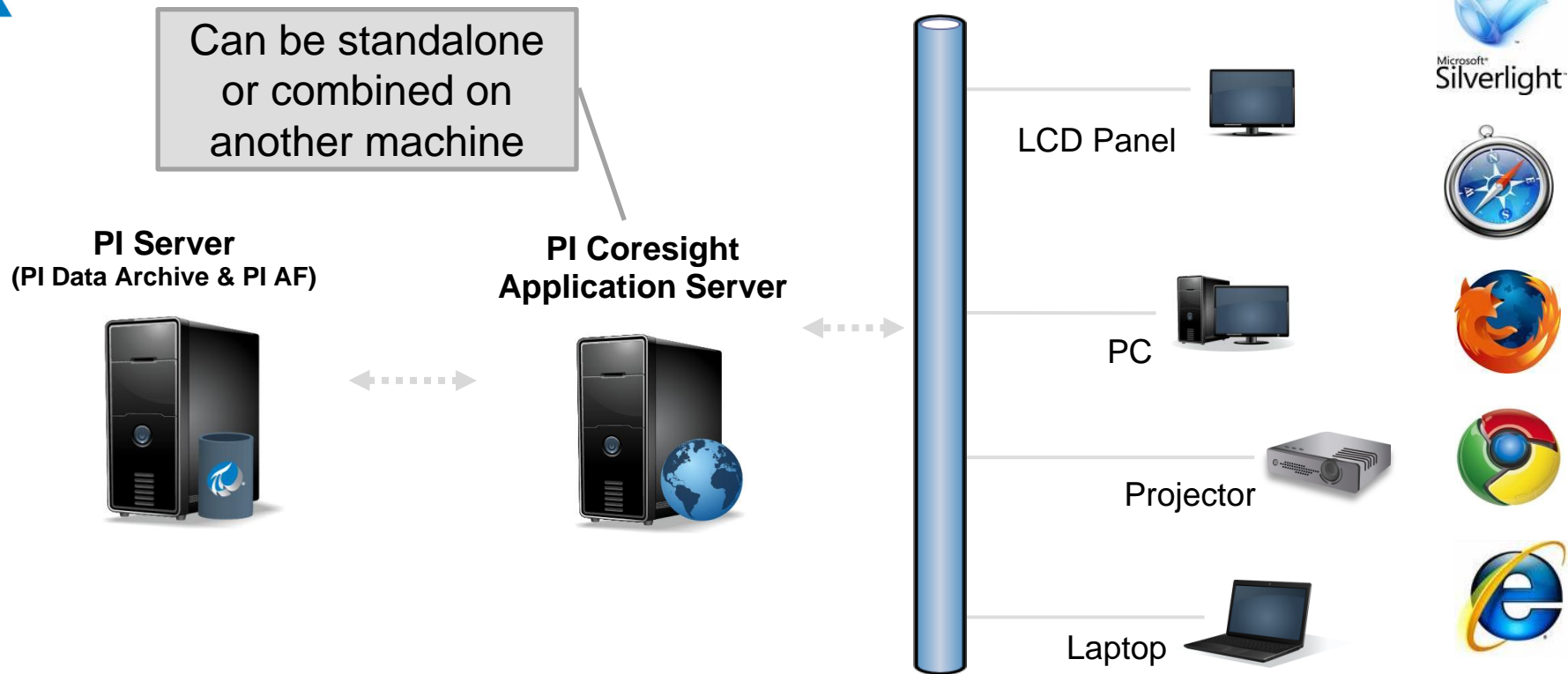
# Anytime, Anywhere

- No special software needed on the client machine
  - Access PI Coresight from anywhere using Active Directory credentials
- Use any web browser that supports the Microsoft Silverlight add-in
  - Silverlight is supported on Windows OS and Mac OSX





# PI Coresight Architecture



# PI Coresight Server Requirements

## PI Coresight website and PI Coresight Admin website

- Windows Server 2008 R2
  - Standard or Enterprise Edition
  - Application Server Role with IIS (Internet Information Server) 7.0 required
- Microsoft SQL Server 2008 R2
  - Standard, Enterprise, Express
  - Can be installed locally or remote
- Hardware Recommendation

# of User	1 to 50	50 to 250	250-500
CPU (Cores)	2	4	8
CPU Speed (GHz)	2	2.5	3
Memory	4	8	16
Disk (GB)	.5	1.5	2.5*

## PI Server

- PI Server
  - Windows Integrated Security requires v.3.4.380 and above
- PI AF- recommended for best experience but not required
  - PI AF 2010 R2 (v.2.3) and above
- PI Server 2010 R3 strongly recommended



For more information about PI Coresight,  
please visit  
<http://www.picoresight.com>



Thank you!

