

OSIsoft®

# USERS<sup>2011</sup> CONFERENCE



Turning **insight** into **action**.



# PI ProcessBook: What's Here, What's Coming

Presented by **Laurie Dieffenbach**, Product Manager, OSIsoft  
**Brian Bostwick**, Director of Engineering, OSIsoft  
**Andre Downey**, Development Lead, OSIsoft

# Best Current Features (v3.2)

- Asset-based Element Relative Displays
- Playback
- Trending features
- Bookmark Navigation
- PI Notifications support
- Details and Annotations
- Data Favorites

# PI AF Element Relative Displays

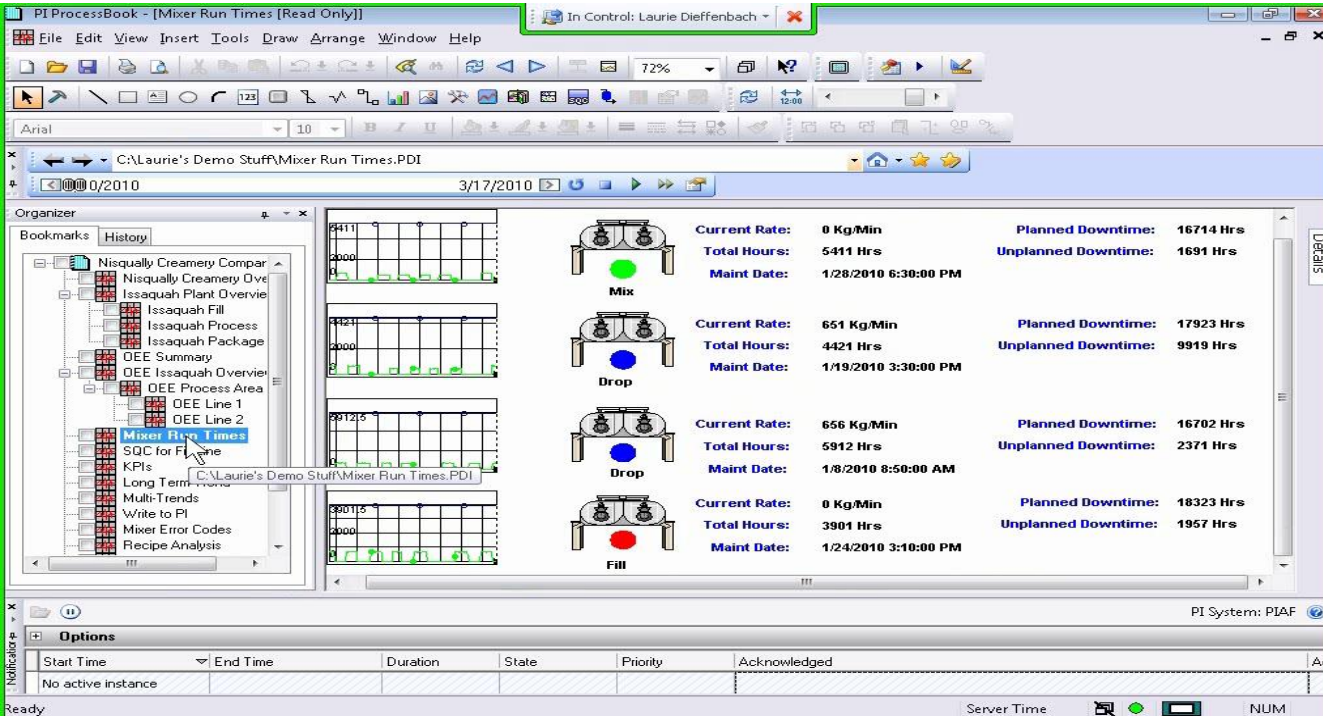
The screenshot displays the PI ProcessBook - [Issaquah Plant Overview] window. The interface is divided into several sections:

- Menu Bar:** File, Edit, View, Insert, Tools, Draw, Arrange, Window, Help.
- Toolbar:** Contains various icons for navigation and editing.
- File Explorer (Left):** Shows a tree view of the project structure, including folders like 'Nisqually Creamery Company' and 'Issaquah Plant Overview'.
- Central Display:** Features a process diagram titled 'Issaquah Plant Overview'. It is divided into two main sections: 'Fill' (left) and 'Process' (right). The 'Process' section is currently selected and shows 'Currently in Production:' with two lines: 'Line 1: Five Gallon Vanilla Chocolate Chip' and 'Line 2: Five Gallon Vanilla'.
- Details Panel (Right):** Provides information about the selected element, including 'Data Source', 'Option', and 'Button1'. It also shows a table with columns for 'Event Time', 'Value', 'Q', and 'A'.
- Status Bar (Bottom):** Displays the 'PI System: PIAF' and a 'Ready' status.

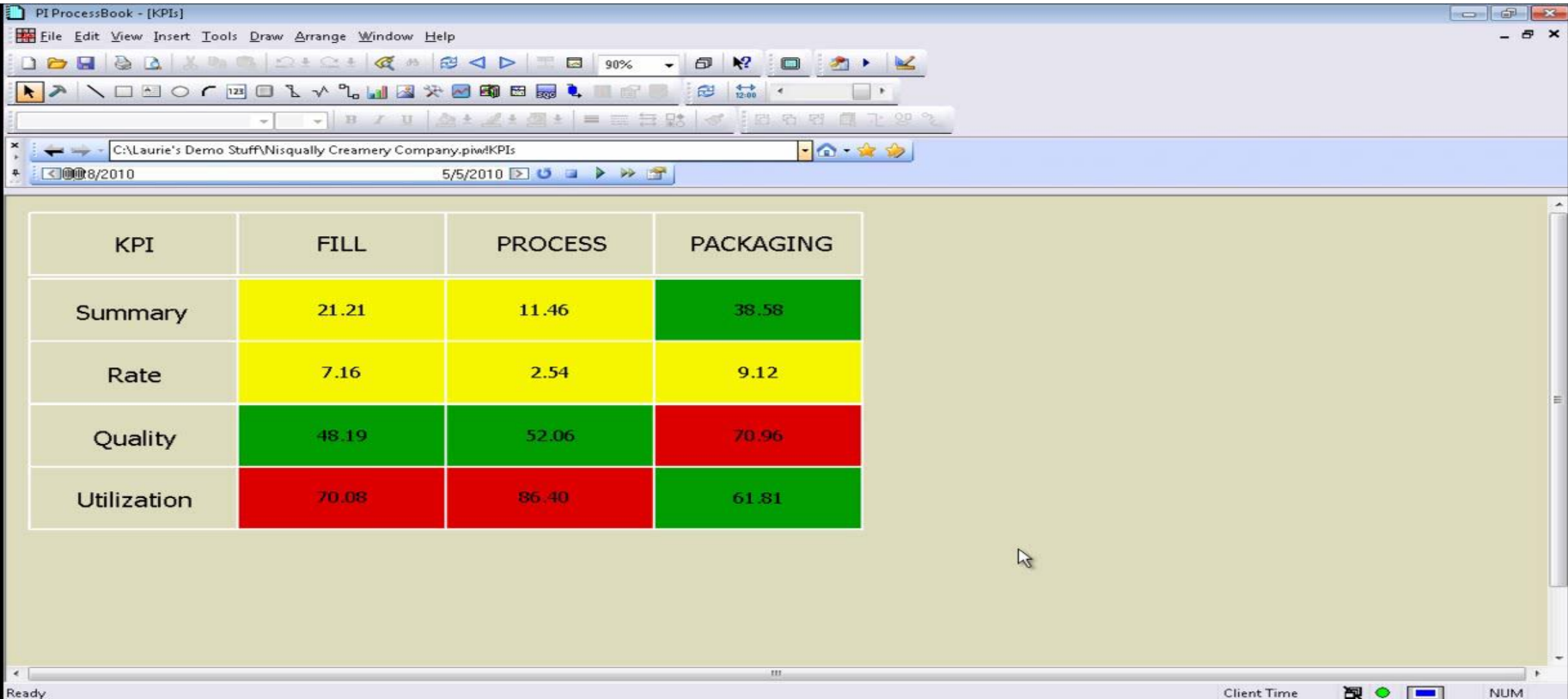
The interface also includes a 'Details' panel on the right side, showing a table with columns for 'Event Time', 'Value', 'Q', and 'A'. The table contains one row of data: '3/18/2010 11:59:00 AM'.

| Event Time            | Value | Q | A |
|-----------------------|-------|---|---|
| 3/18/2010 11:59:00 AM |       |   |   |

# Playback



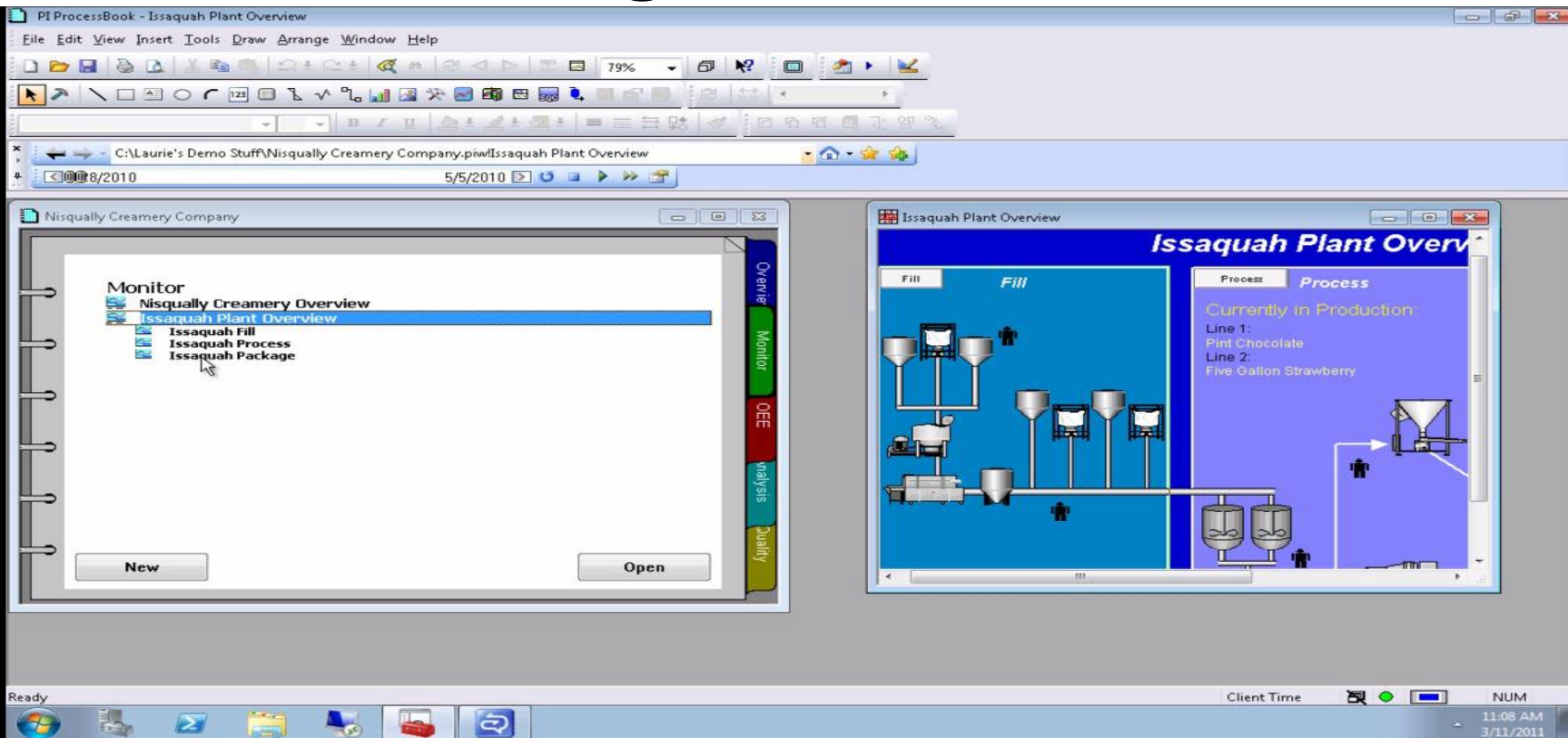
# Trending features



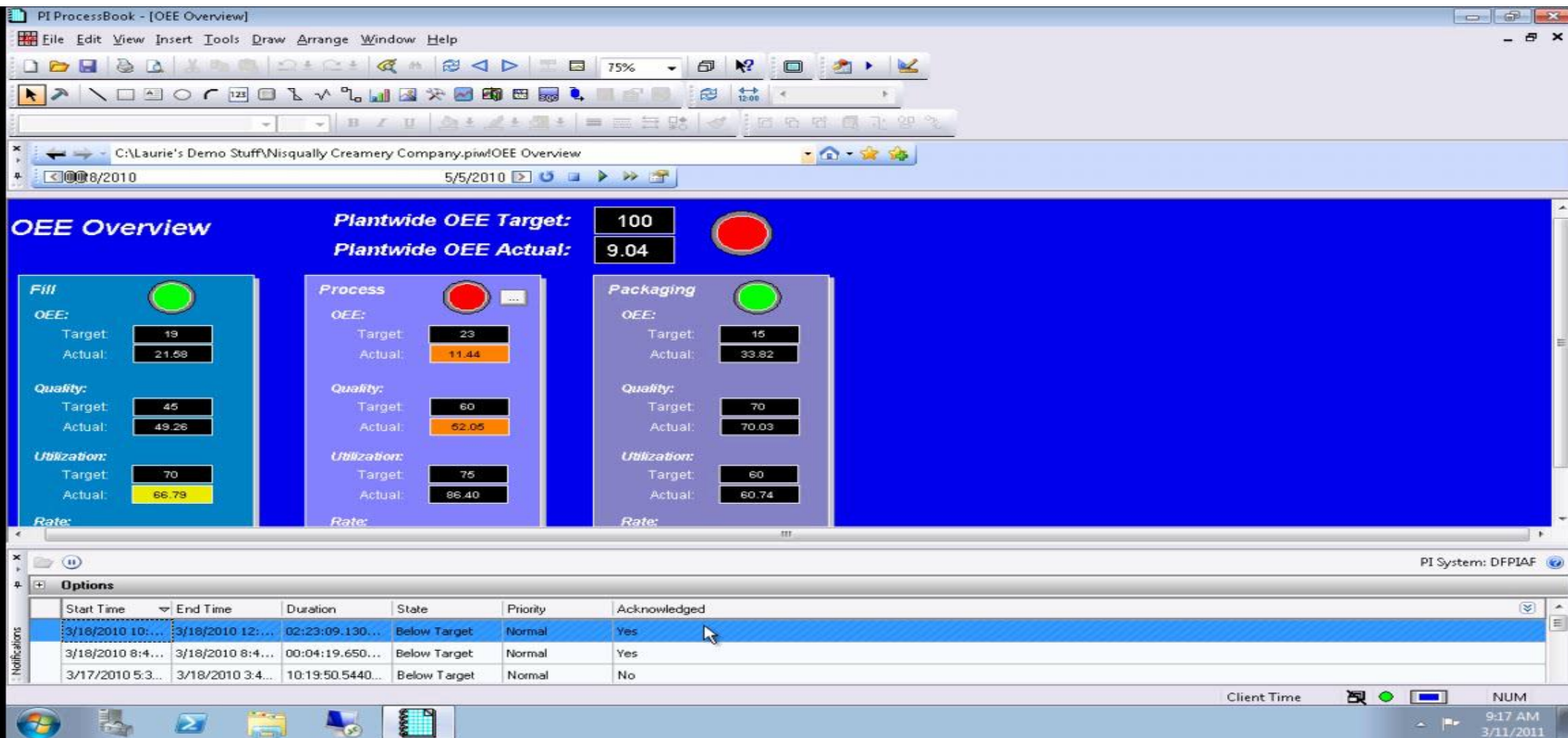
The screenshot shows the PI ProcessBook software interface. The title bar reads "PI ProcessBook - [KPIs]". The menu bar includes File, Edit, View, Insert, Tools, Draw, Arrange, Window, and Help. The toolbar contains various icons for file operations, editing, and viewing. The address bar shows the file path "C:\Laurie's Demo Stuff\Nisqually Creamery Company.piw\KPIs". The status bar at the bottom indicates "Ready", "Client Time", and "NUM".

| KPI         | FILL  | PROCESS | PACKAGING |
|-------------|-------|---------|-----------|
| Summary     | 21.21 | 11.46   | 38.58     |
| Rate        | 7.16  | 2.54    | 9.12      |
| Quality     | 48.19 | 52.06   | 70.96     |
| Utilization | 70.08 | 86.40   | 61.81     |

# Bookmark Navigation

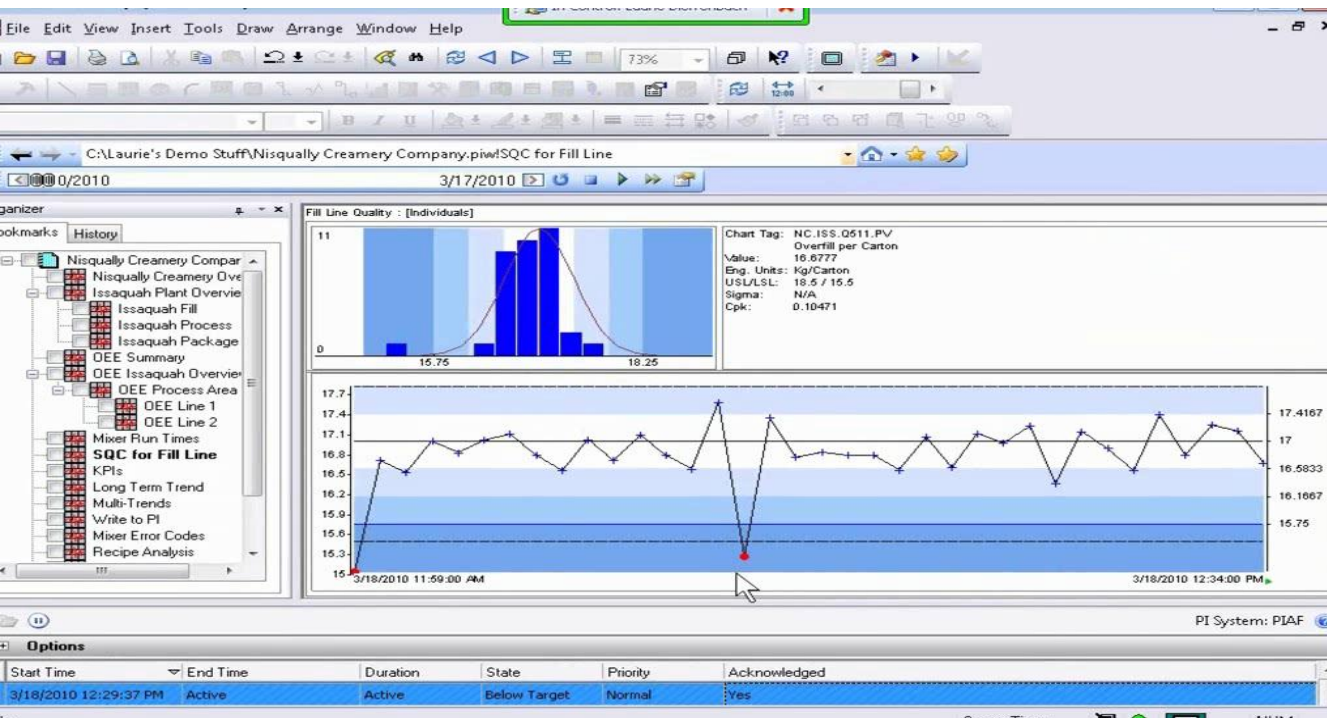


# PI Notifications

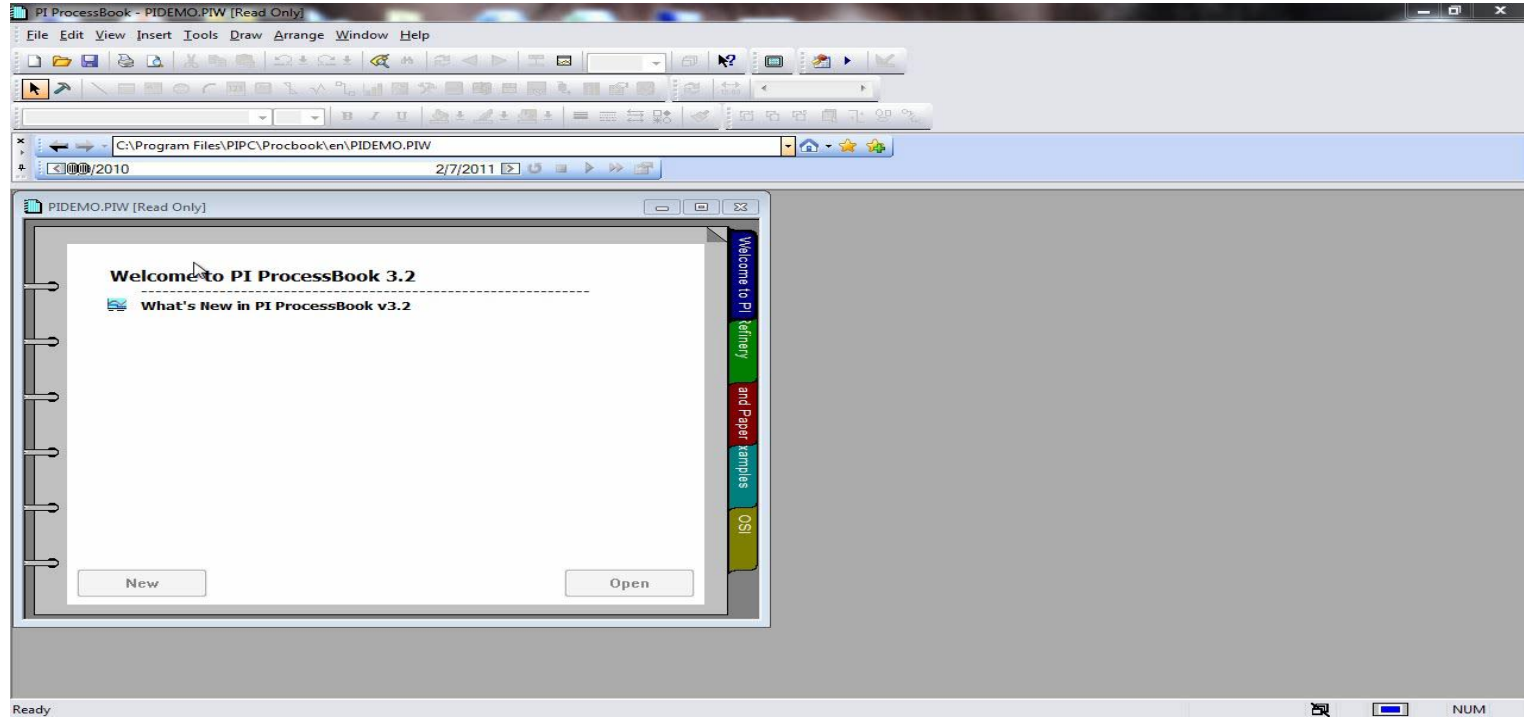




# Details

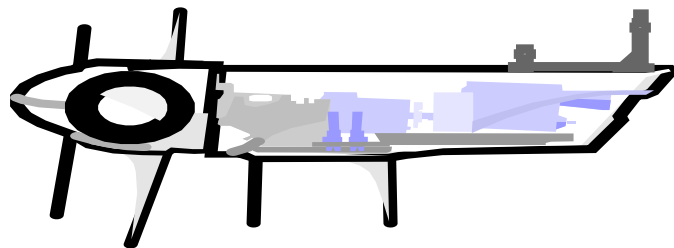


# Data Favorites



# Short-term Plans: PI ProcessBook 2011 (v3.3)

- Better support for non-English languages
- Time handling tools
- Deeper asset support
- Some new symbol library images



Korean version

File Edit View Insert Tools Draw Arrange Window Help

100%

2011-03-13

C:\Users\Wdieffenbach\Documents\디스플레이1.PDI

디스플레이1

플롯-0

English text

여

뮷ㅇ드레

AF2.\UC2011PB\UC2011PB\_AF\UC2011PB ModuleDB\PowerCo\Gene  
1011.62  
2011-03-15 오후 2:43:16

PI Language Settings Tool

언어 표시 언어 설정 정보

PI 데스크톱 응용 프로그램의 사용자 인터페이스에 대한 표시 언어를 설정합니다.

- ☐ 설치 시 지정된 기본 표시 언어를 사용합니다 [ 한국어 ]
- ☐ 현재 Windows 운영 체제 표시 언어와 일치하도록 설정합니다 [ 한국어 ]
- ☒ Windows 사용자 계정에 대한 다른 표시 언어를 선택하십시오.

English

변경 내용을 적용하려면 모든 PI 응용 프로그램을 종료한 다음 다시 시작하십시오. 이 설정을 적용하면 선택한 언어가 모든 현지화된 PI 데스크톱 응용 프로그램에 적용됩니다.

확인 취소

PI ProcessBook - 디스플레이1

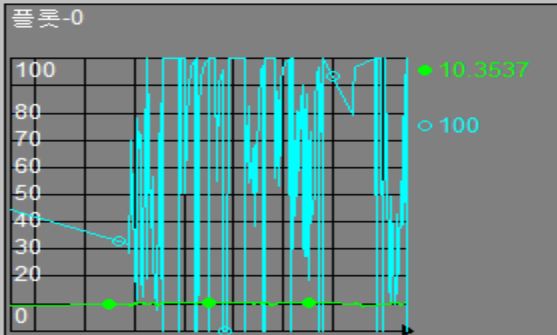
File Edit View Insert Tools Draw Arrange Window Help

2011-03-13

C:\Users\ldieffenbach\Documents\디스플레이1.PDI

디스플레이1

플롯-0



English text

여

못으드려

AF2.\UC2011PB\UC2011PB\_AF\UC2011PB ModuleDB\PowerCo\G  
1011.08  
2011-03-15 오후 2:22:16

ProcessBook Preferences

General Table of Contents Display Window Trend Trend Elements

Author

Startup File

Library File

Prefer Run Mode

Keep snapshot values on updating plots

Choose the language to use with PI desktop applications:

Language Settings...

PI Language Settings Tool

Display Language

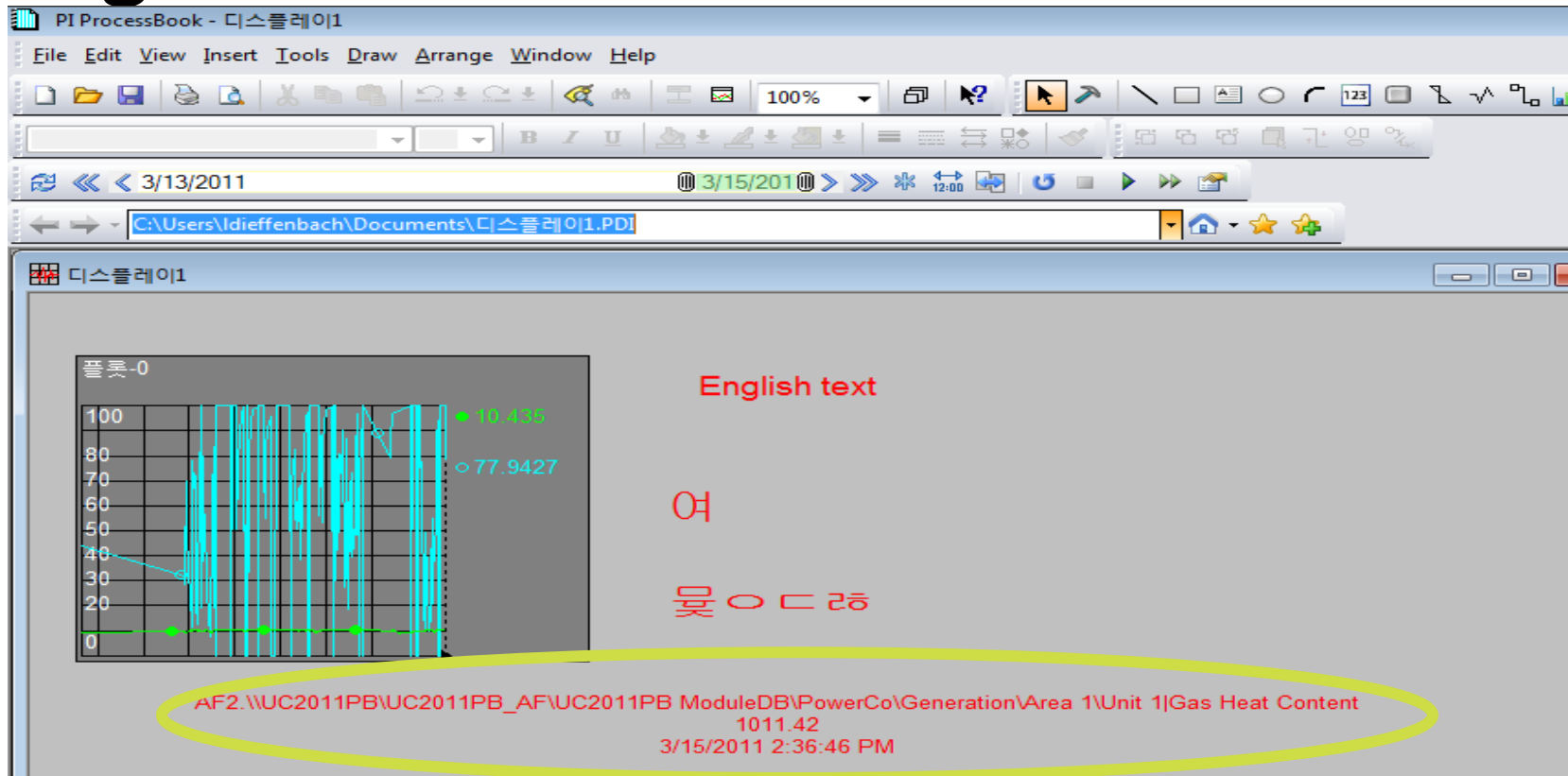
About Language Settings

Set a user interface language for PI desktop applications:

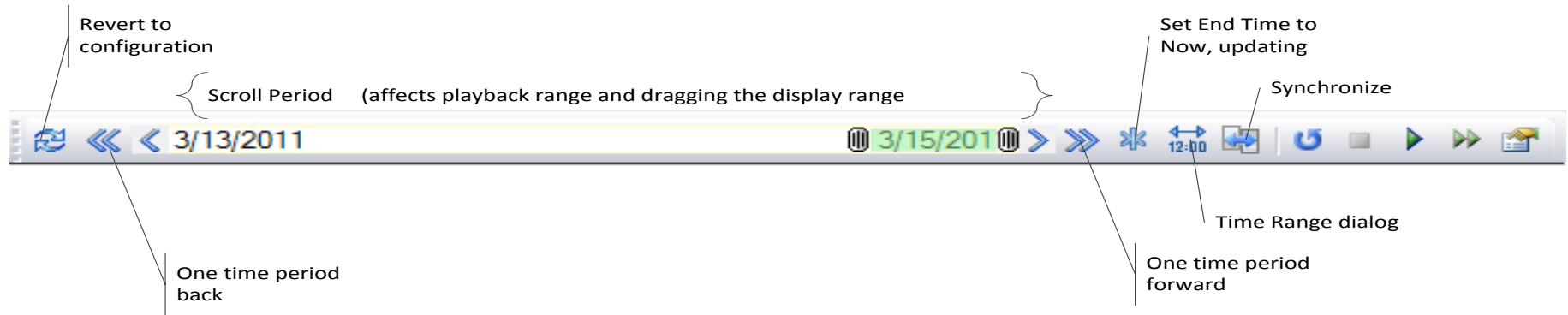
- Use the default language specified at installation time [ 한국어 ]
- Match the current Windows display language set for your operating system [ English ]
- Select a different language for your Windows user account

The changes will take effect after you exit and restart application. The selected language applies to all localized PI desktop applications starting after this setting.

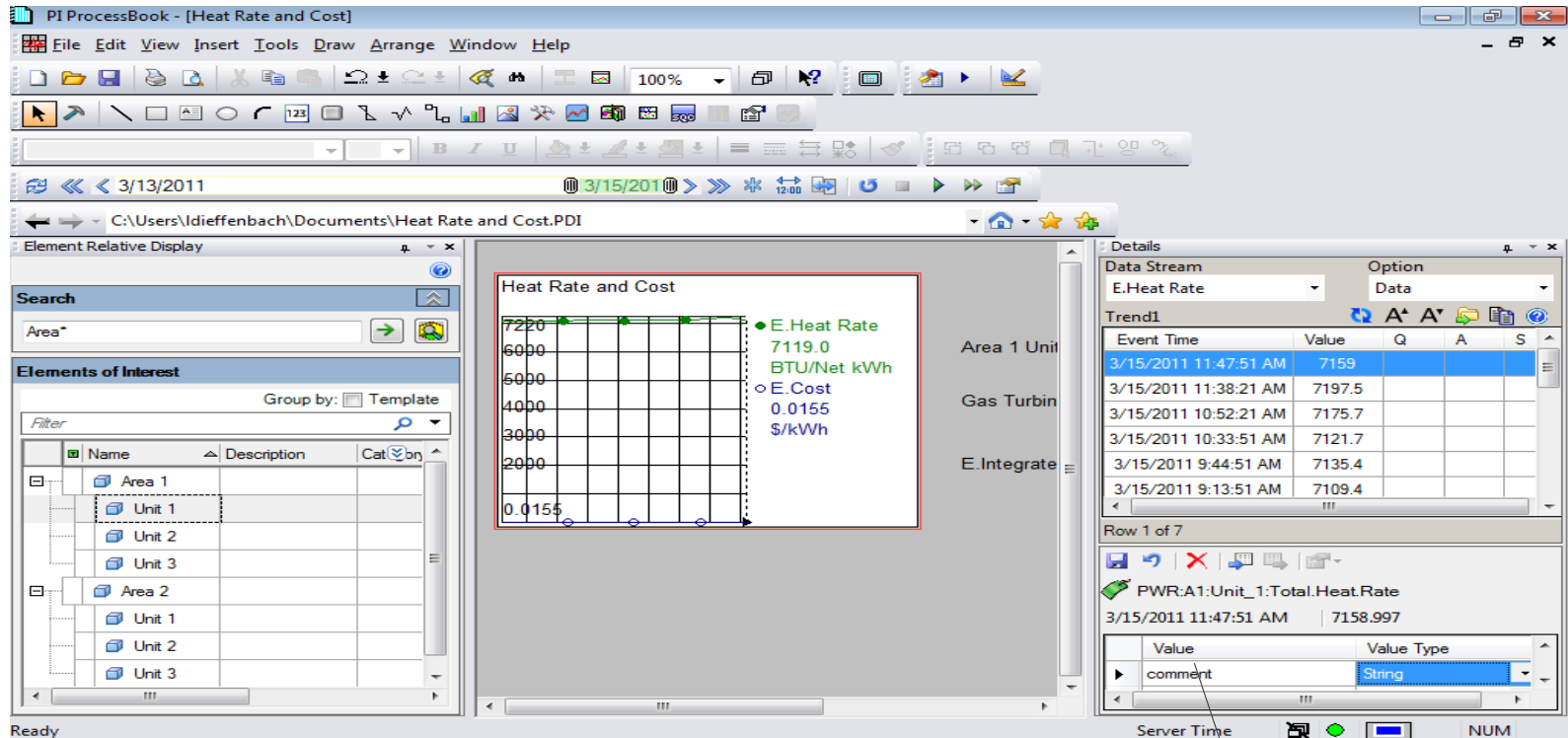
# English Version with US Format



# The new Time and Playback bar



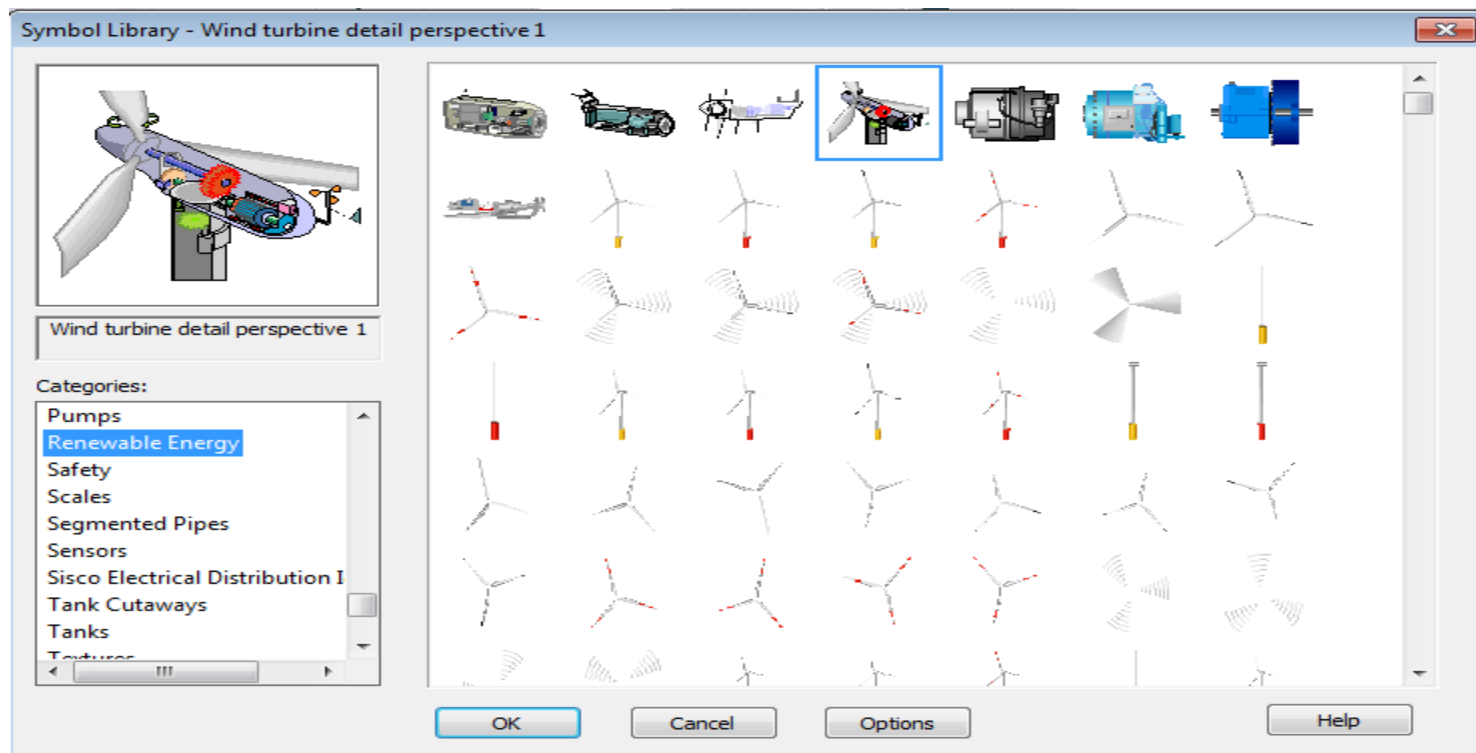
# Annotate PI AF references



Annotate an AF attribute pointing to a PI Tag



# New Renewable Energy Images



# Strategic Directions

- Support new tools and products (e.g, interoperability, support event frames)
- Continue support for existing content

# What Should You Do?

- Enjoy the newest features of PI ProcessBook
- Continue providing feedback through Tech Support
- Watch the PI System Roadmap on the Tech Support web site
- Stay tuned for more definitive plans in the coming years



# Thank you

© Copyright 2011 OSIssoft, LLC.

Turning **insight**  
into **action.**