

OSIsoft®

USERS²⁰¹¹ CONFERENCE



Turning **insight** into **action**.



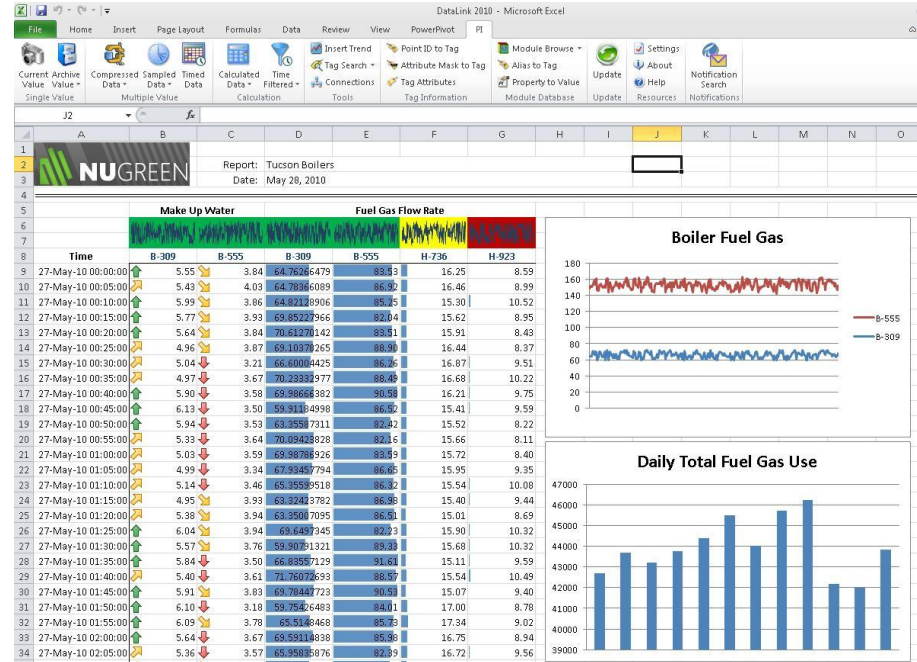
Asset Centric PI DataLink - PI DataLink meets PI AF

Presented by **Matt Ziegler**, Product Manager, OSIsoft
Jason King, Senior Software Developer, OSIsoft

PI DataLink

Add-in to Microsoft Excel to retrieve PI System data, create reports, perform calculations, and do analysis in a familiar environment

OSIsoft's most popular product by installations



New Features

- Integration with PI AF

“I want to access my PI System data without having to know about tags.”

- Search

“I want to find relevant information quickly and easily.”

- Excel 2010 64-bit support

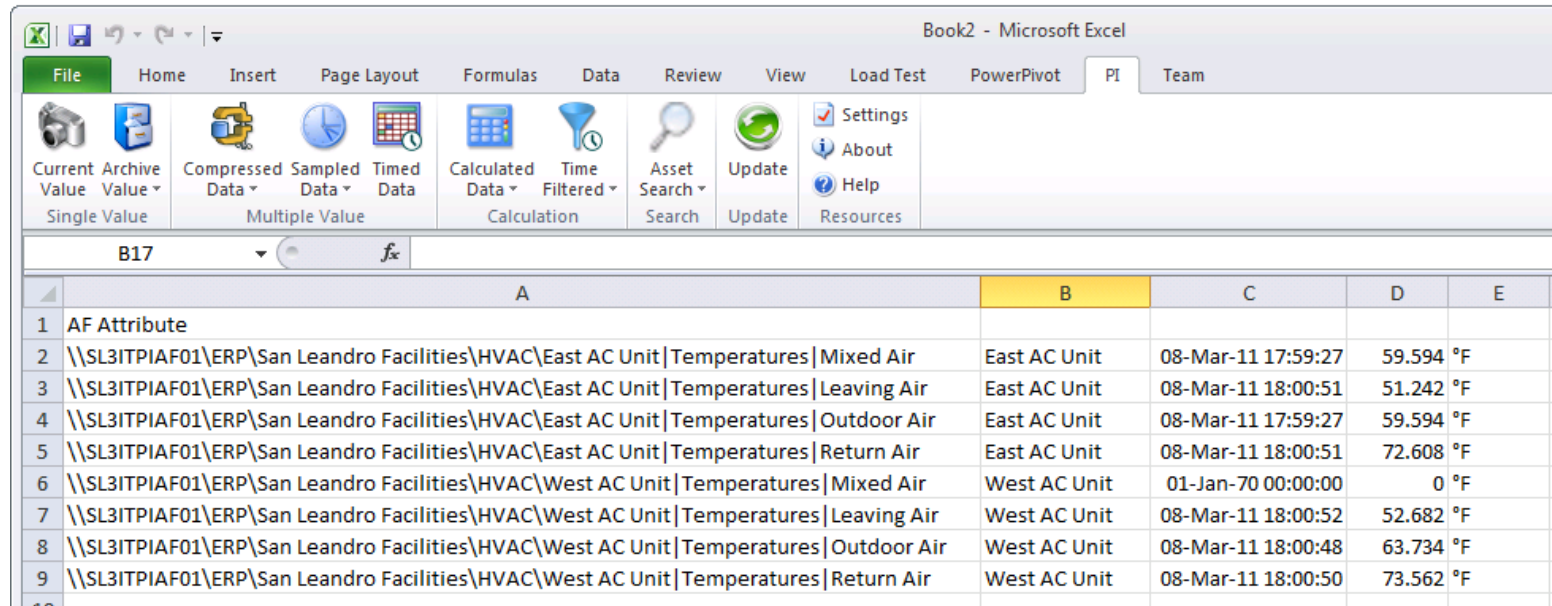
“I want to leverage my investment in the latest technologies to maximize my productivity.”

Disclaimer

PI DataLink is still under development. While the product is close to its final state, the exact implementation of features and functions, look and feel, are still subject to change.

Integrated PI AF Experience

You already know how to use it ...

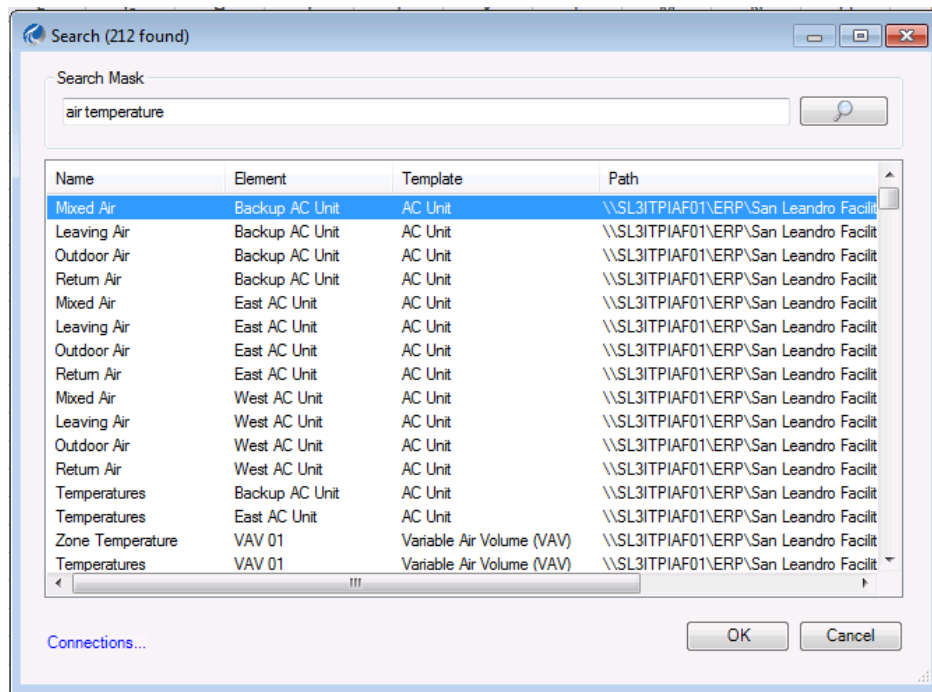


	A	B	C	D	E
1	AF Attribute				
2	\\SL3ITPIAF01\ERP\San Leandro Facilities\HVAC\East AC Unit Temperatures Mixed Air	East AC Unit	08-Mar-11 17:59:27	59.594 °F	
3	\\SL3ITPIAF01\ERP\San Leandro Facilities\HVAC\East AC Unit Temperatures Leaving Air	East AC Unit	08-Mar-11 18:00:51	51.242 °F	
4	\\SL3ITPIAF01\ERP\San Leandro Facilities\HVAC\East AC Unit Temperatures Outdoor Air	East AC Unit	08-Mar-11 17:59:27	59.594 °F	
5	\\SL3ITPIAF01\ERP\San Leandro Facilities\HVAC\East AC Unit Temperatures Return Air	East AC Unit	08-Mar-11 18:00:51	72.608 °F	
6	\\SL3ITPIAF01\ERP\San Leandro Facilities\HVAC\West AC Unit Temperatures Mixed Air	West AC Unit	01-Jan-70 00:00:00	0 °F	
7	\\SL3ITPIAF01\ERP\San Leandro Facilities\HVAC\West AC Unit Temperatures Leaving Air	West AC Unit	08-Mar-11 18:00:52	52.682 °F	
8	\\SL3ITPIAF01\ERP\San Leandro Facilities\HVAC\West AC Unit Temperatures Outdoor Air	West AC Unit	08-Mar-11 18:00:48	63.734 °F	
9	\\SL3ITPIAF01\ERP\San Leandro Facilities\HVAC\West AC Unit Temperatures Return Air	West AC Unit	08-Mar-11 18:00:50	73.562 °F	

... Use both PI AF and PI Tag paths to locate PI System data

New PI DataLink Search Experience

- Find the data you want.
Fast.
- Find tags and assets by name and relationships. Filter, sort, and scan the results.



Excel 2010 64-bit Support

- More rows, more columns. Better BI.
- Compatible with all versions of Excel 2010
- Faster performance and more memory

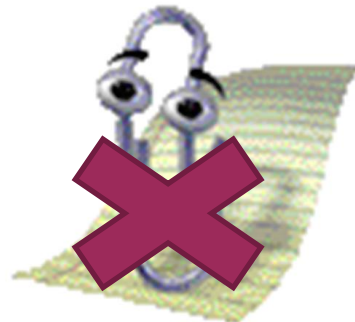
Supported Platforms

Office Versions

- Excel 2007
- Excel 2010 (32-bit)
- Excel 2010 (64-bit)
- No longer supports Excel 2003 (or earlier)
 - Best PI AF Experience requires new Excel UI - Ribbon + Task Panes
 - Ending MS support for 2003
 - Mainstream Ended: April 14, 2009
 - Extended Support Ends: April 8, 2014

Operation Systems

- Windows XP (SP3) – Windows 7
- Windows Server 2003 (SP2) – 2008R2
- NET Framework 4.x required



Backward Compatibility

- Continue to utilize existing workbooks
- PI Server 2010 Exclusive
 - Sync your PI MDB with PI AF and access data via PI AF
 - PI Server 2010 not required. Earlier versions supported
- AF Server NOT required.
- Use Attributes and/or PI Tags. Your choice.

Caveats

- Trend Control
 - 32-bit: Display & Update Existing Displays. No editing or creating new Trends
 - 64-bit: Not Available. Trends display as static images and do not update.
- MDB Functions
 - Refresh, Recalculate and Select existing function. No new functions
- Recommend upgrading to PI Server 2010

Level of Attribute Support

- ✓ PI point data reference
- ✓ Formula data reference
- ✓ Custom data reference
- ✓ Table data reference

Other Notables

- Improved install experience
 - Single 32/64-bit kit
 - All pre-reqs included (no PIAs)
 - More reliable and easier to customize for large deployments
- Recent Highlights
 - Update Function
 - Internationalization

Demonstration

- DataLink Status Dashboard

Demonstration

- New features and functionality

Wrap - Up

- Integration with PI AF

“I want to access my PI System data without having to know about tags.”

- Search

“I want to find relevant information quickly and easily.”

- Excel 2010 64-bit support

“I want to leverage my investment in the latest technologies to maximize my productivity.”






Thank you

© Copyright 2011 OSIssoft, LLC.


Turning **insight**
into **action.**

Roadmap

17-Mar-2011

 Major release
  Minor release
  Service Pack

[older](#)
[newer](#)

Featured Products	Q2 2010	Q3 2010	Q4 2010	Q1 2011	Q2 2011	Q3 2011 - Q4 2011	Q1 2012 - Q2 2012
CLIENT View more	Q2 2010	Q3 2010	Q4 2010	Q1 2011	Q2 2011	Q3 2011 - Q4 2011	Q1 2012 - Q2 2012
PI ProcessBook	✓		✓				
PI ActiveView							
PI DataLink		✓					
PI DataLink Server							
PI Manual Logger							
PI WebParts	✓						

<http://techsupport.osisoft.com/techsupport/nontemplates/roadmap.aspx>