

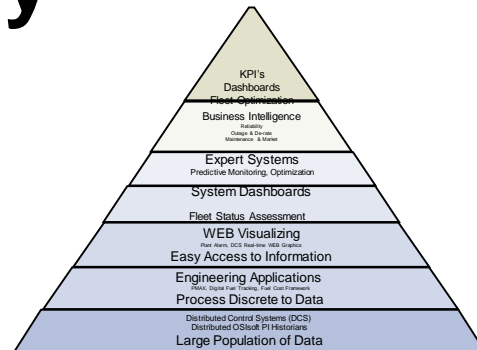
DTE Energy

**Fleet Optimization
..... through Process Controls & Technology**

Presented by **Sumanth K. Makunur**

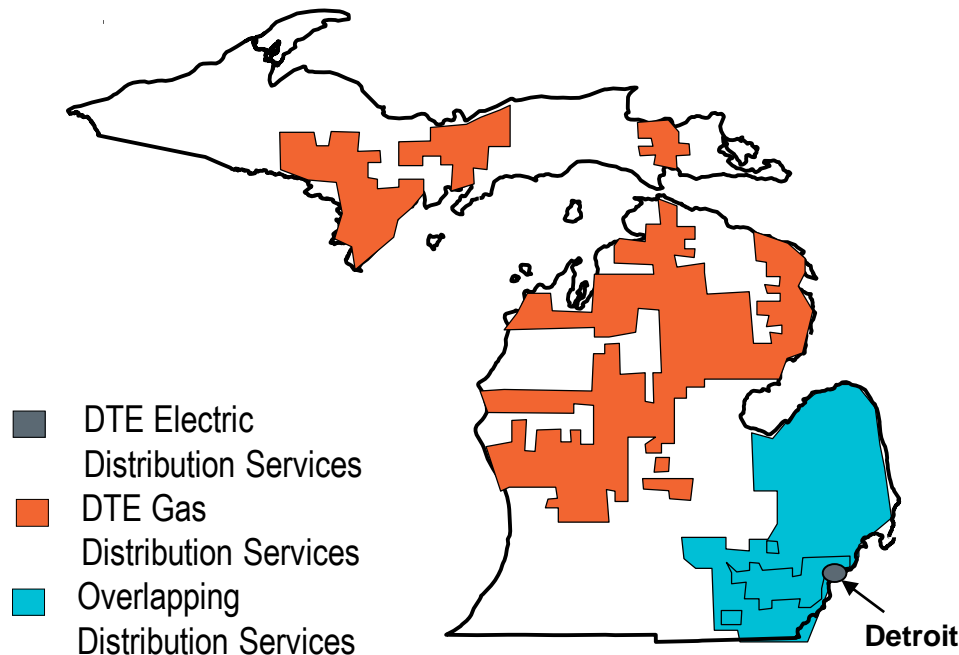
Process Controls & Technology

- [illegible]



Integrated applications environment:
Consistent framework for data,
analysis, reporting and consistent
user graphical interface.

Profile of DTE Utility Business



DTE Electric

- Ninth largest electric utility in the U.S. with 2.1 million customers
- Over 11,080 MW of power generation, primarily coal fired
- 54,000 GWh in electric sales
- ~\$8.79 billion in revenue

DTE Gas

- Fifth largest natural gas utility in the U.S. with 1.2 million customers
- 170 Bcf of gas sales
- 12% of national gas storage capacity with 124 Bcf of regulated gas storage

Power Plants & Performance Center



Monroe – 3,135 mw



Trenton Channel - 730 mw



River Rouge - 527 mw



Belle River – 1,260 mw



Performance Center – 11,588 mw



Greenwood – 785 mw

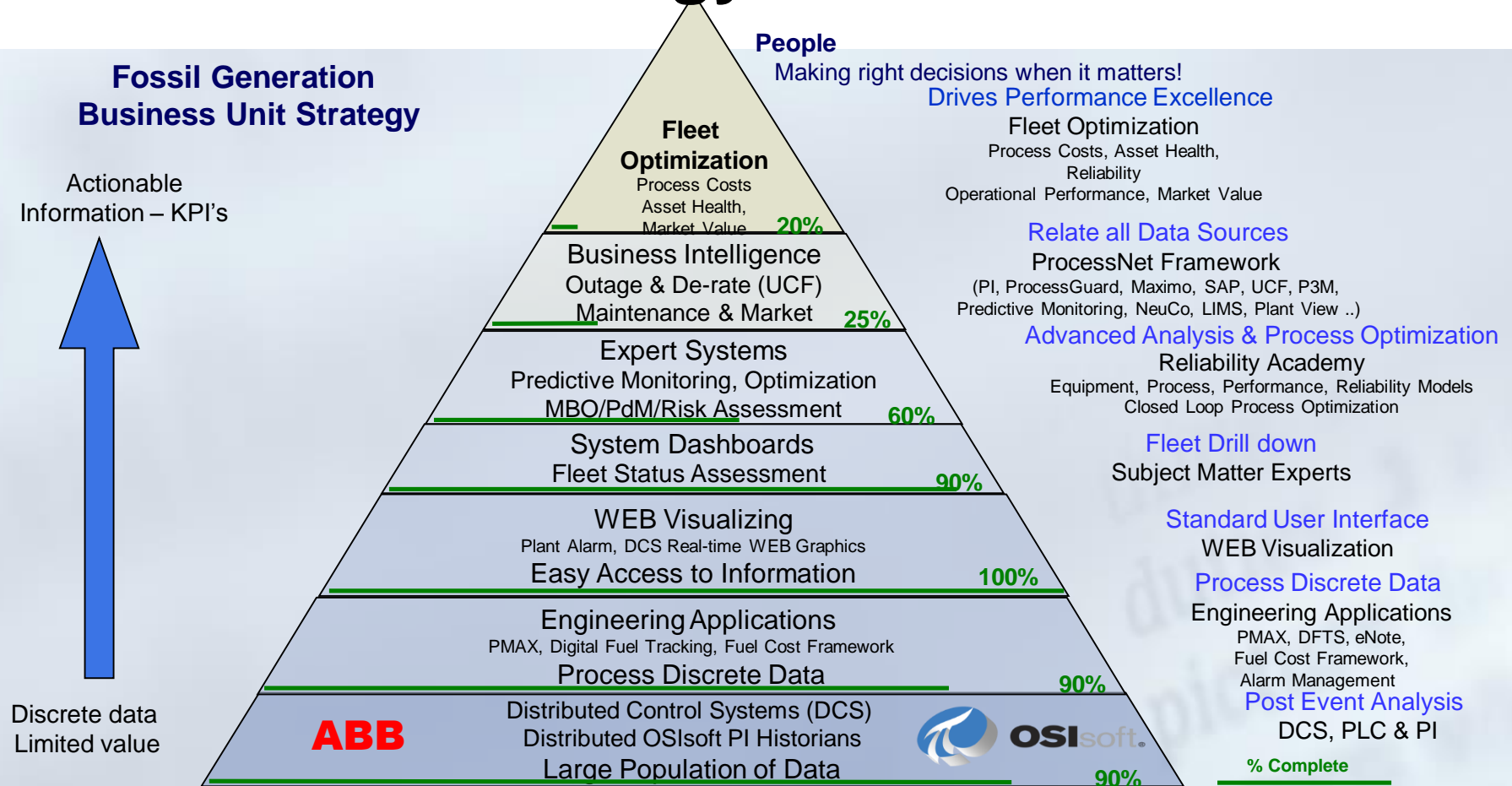
Generating Unit	Capacity Unit	Capacity Plant
Belle River 1	625	1260
Belle River 2	635	
Belle River		
Conners Creek 15	135	235
Conners Creek 16	100	
Conners Creek		
Fermi 2	1110	1110
Greenwood 1	785	785

Expanding Renewable Portfolio



Trenton Channel		766
Peakers	1224	1224
Totals:	10554	10554

Control & Technology Framework



The Performance Center

The Door into the Fleet

Performance Center – Mission

Equipment Performance Optimization of the Fossil Generation Portfolio through continuous “real time and **predictive** asset **condition monitoring**” to maximize the asset **market value**.

Performance Center – Vision

Fossil Generation’s Fleet-wide “**Mission Control Center**” for continuous **monitoring** and **optimization** of plant equipment performance



Operating View of Fleet

- Drives consistent practices (UCF)
- Market interface w/MOC
- Proficient users of technology
- SME rotation mutually beneficial
- Reliability tools (SmartSignal & Plant View)
- Input in the budget process

Virtual Control Room - 23 Units



Control & Technology Framework

Fossil Generation Business Unit Strategy

Actionable
Information – KPI's



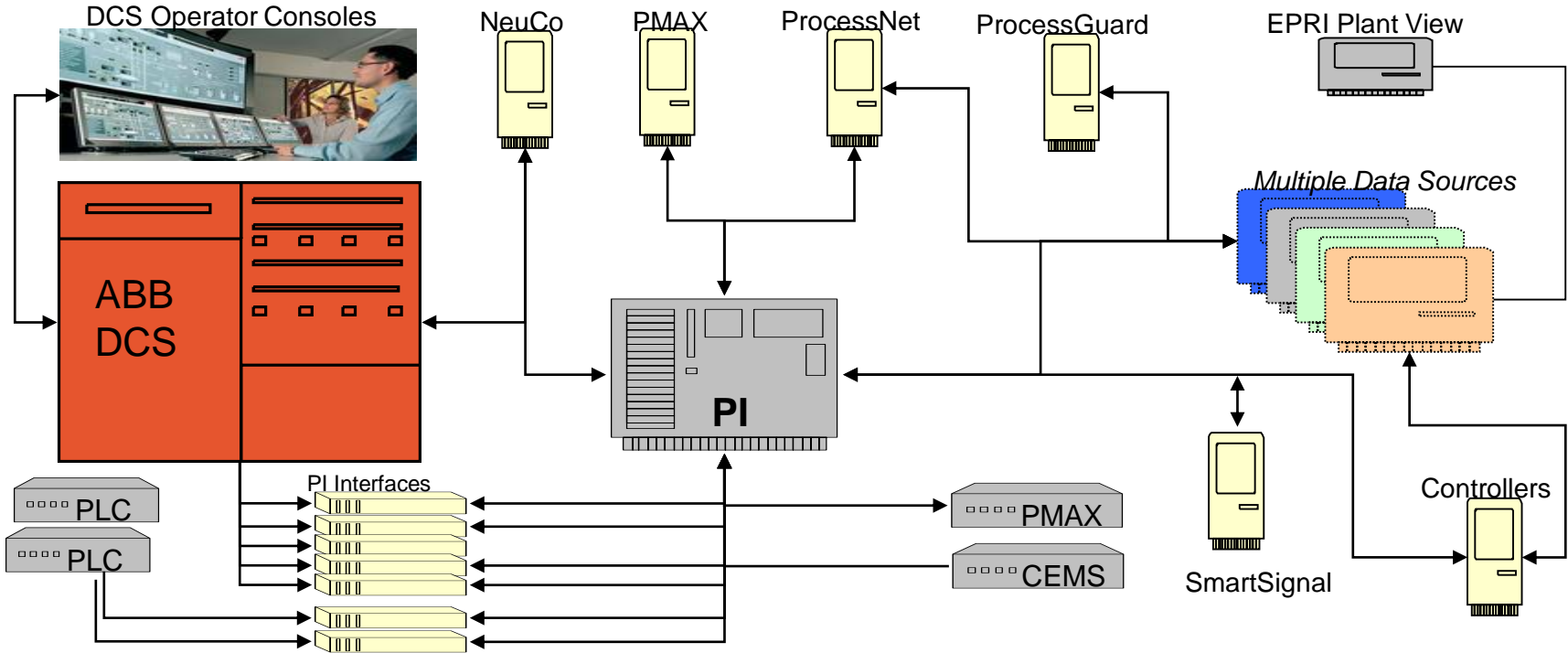
Discrete data
Limited value

ABB

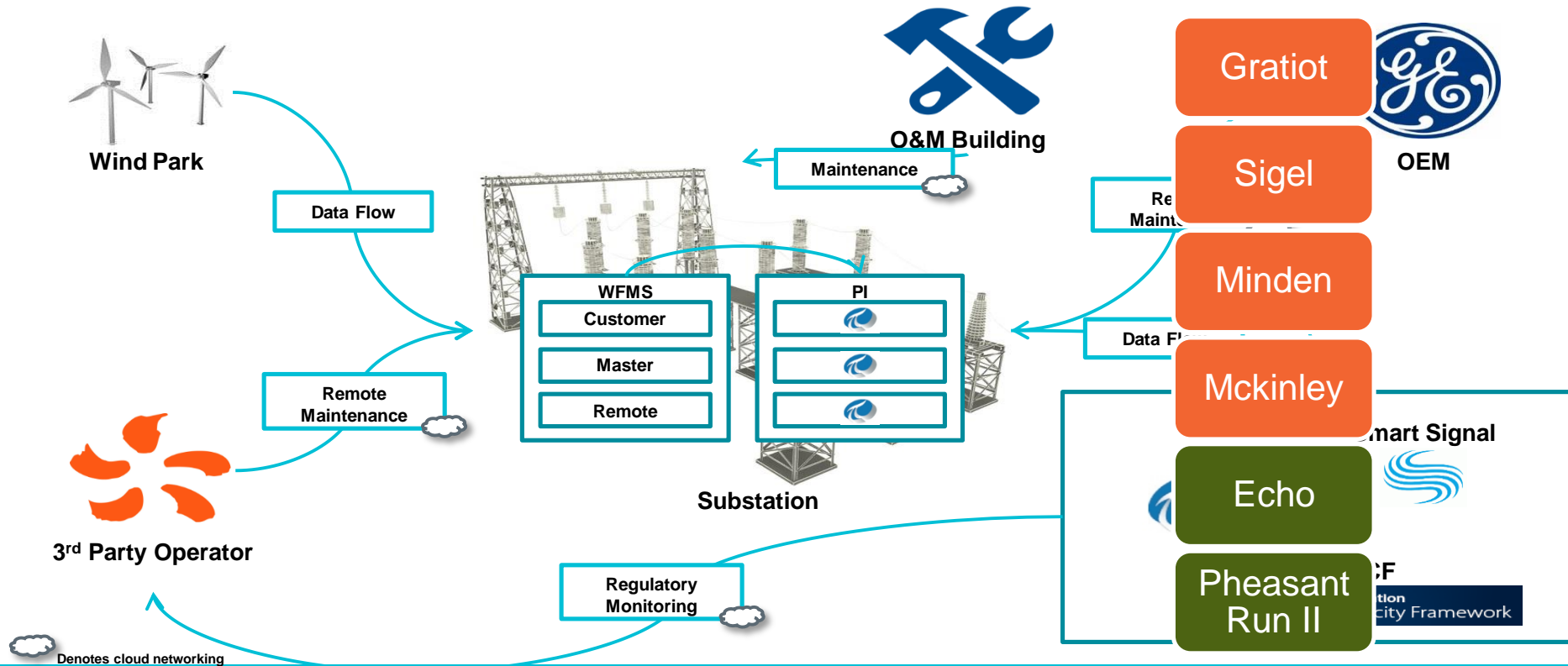
Distributed Control Systems (DCS)
Distributed OSIsoft PI Historians
Large Population of Data



Control & Technology Infrastructure – Plants



Control & Technology Infrastructure – Wind Parks



Raw PI Data Analysis

PI Yields Benefits

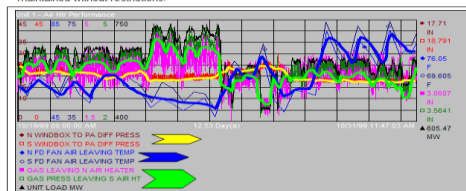
- Post trip analysis
- Process monitoring
- Optimization
- Early warning
- Alarming

UNIT 1 – COMBUSTION PRO (I.E., AIR HEATER PERFORMANCE VS COAL MILLS)

Exhibit 5

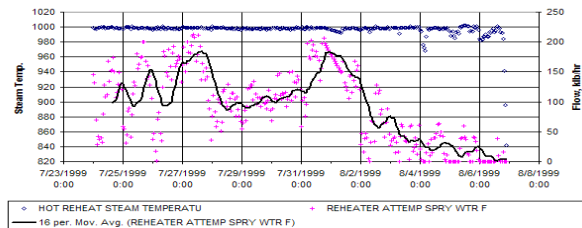
Concerns have recently arisen regarding degrading performance of Unit 1's Coal Mills over this past week. I would like to take this opportunity to **throw-caution-to-the-wind** in light of two factors: 1) Lack of good air heater radial seals, and 2) rising ambient air temperatures.

In the PI graph below of Unit 1's parameters, a review of **PA-to-Windbox delta-P** (key to Coal Mill performance) is compared simultaneously to **ambient air temperatures** (FD Fan Air Leaving) and **Reheater Attemp Spry WTR F**. Past operating history has defined that when the PA-to-Windbox delta-P reaches a level of **18" H₂O**, that boiler combustion and coal mill performance is drastically impacted. This is the level at which air heater radial seal replacement is dictated if unit load is to be maintained without restrictions.



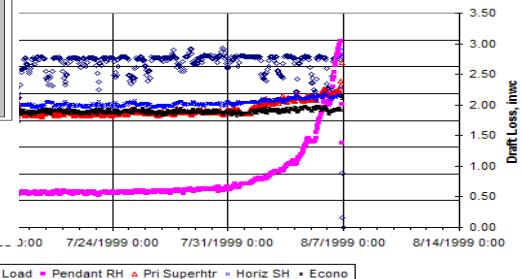
Understanding that air density changes as temperature changes and that it has an inverse effect on fan and air heater performance (i.e., as air temp. increases, efficiency of fans/air heater decrease) we can readily see in the above graph that since October 25th the **ambient air temperature** changed drastically. This was the reported time that Unit 1 coal mill output problems began to arise. As a result, **PA-to-Windbox delta-P** was reduced and coal mills removed from service in an attempt to maintain enough Hot PA **Reheater Attemp Spry WTR F** to the running mills. For a brief period, this provided a false impression that **PA-to-Windbox delta-P** pressure was not affected by rising ambient temperatures, yet when compared to unit load one can easily surmise the error of this perception. It was on Oct. 27th that the true impact on **PA-to-Windbox delta-P** pressure can be seen in the PI graph above. **Please note in the above graph that air temperature had a POSITIVE impact on Oct. 22nd when it cooled down.**

Effect of Pluggage on Reheat Attenuation
Exhibit 2



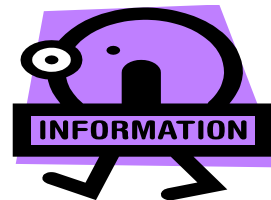
Effect of Pluggage on Economizer Gas Outlet Temperature

Water, Superheater, and Economizer Draft Loss
Exhibit 4



Challenge - Process Data Everywhere!

- **DCS** installations on nearly every unit
- Over **1,000,00** process data tags
 - PI Systems at each plant (~20 PI collectives)
 - PI Interfaces to DCS & many PLC's
- What is that **data screaming** at us?
- How do you effectively **utilize** the data?
- How do you turn data into **information**?



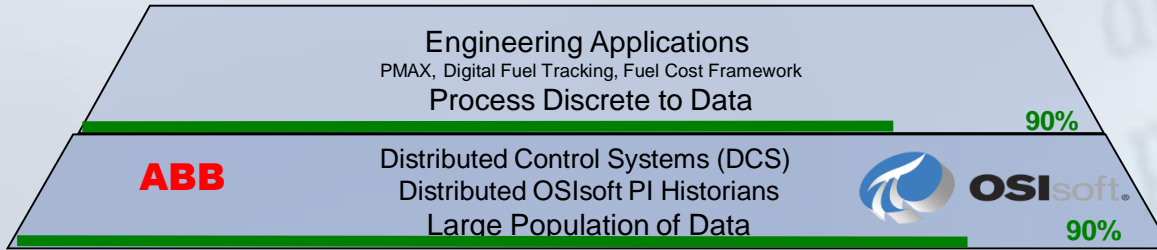
Control & Technology Framework

**Fossil Generation
Business Unit Strategy**

Actionable
Information – KPI's

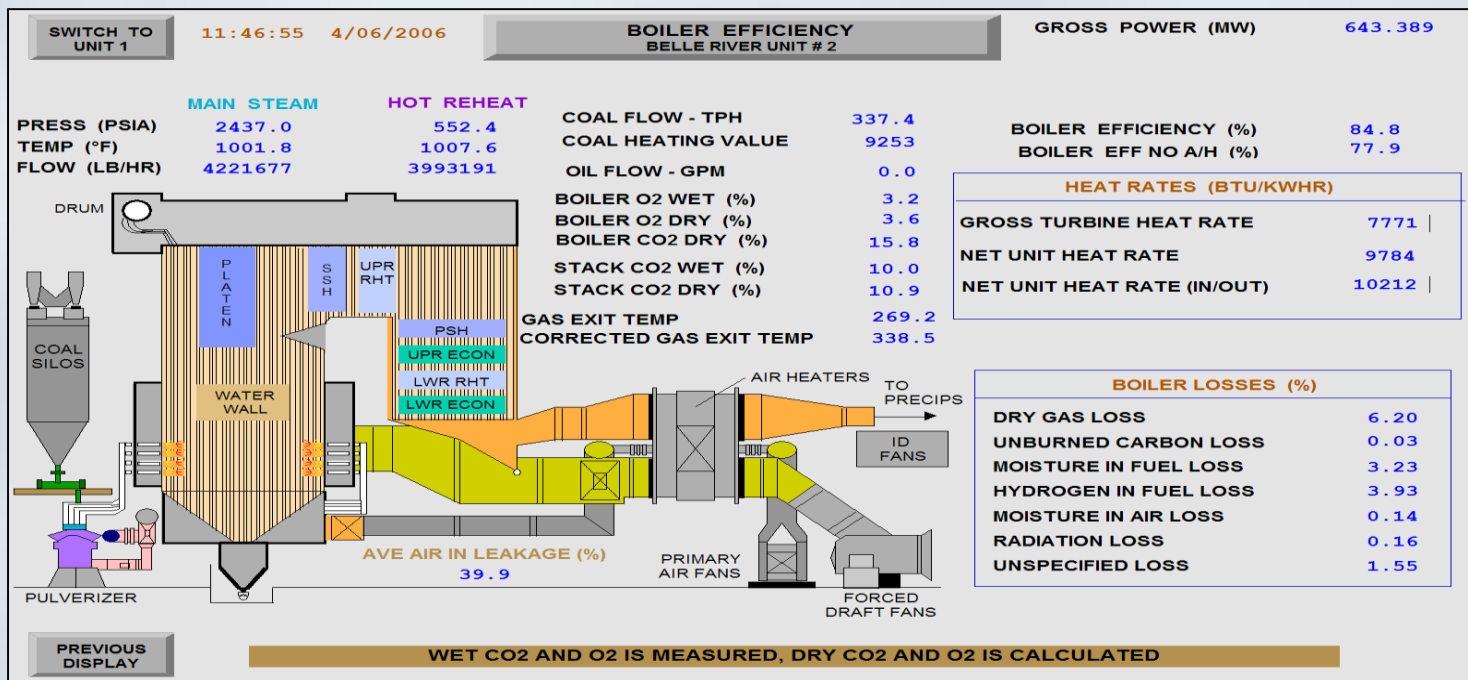


Discrete data
Limited value

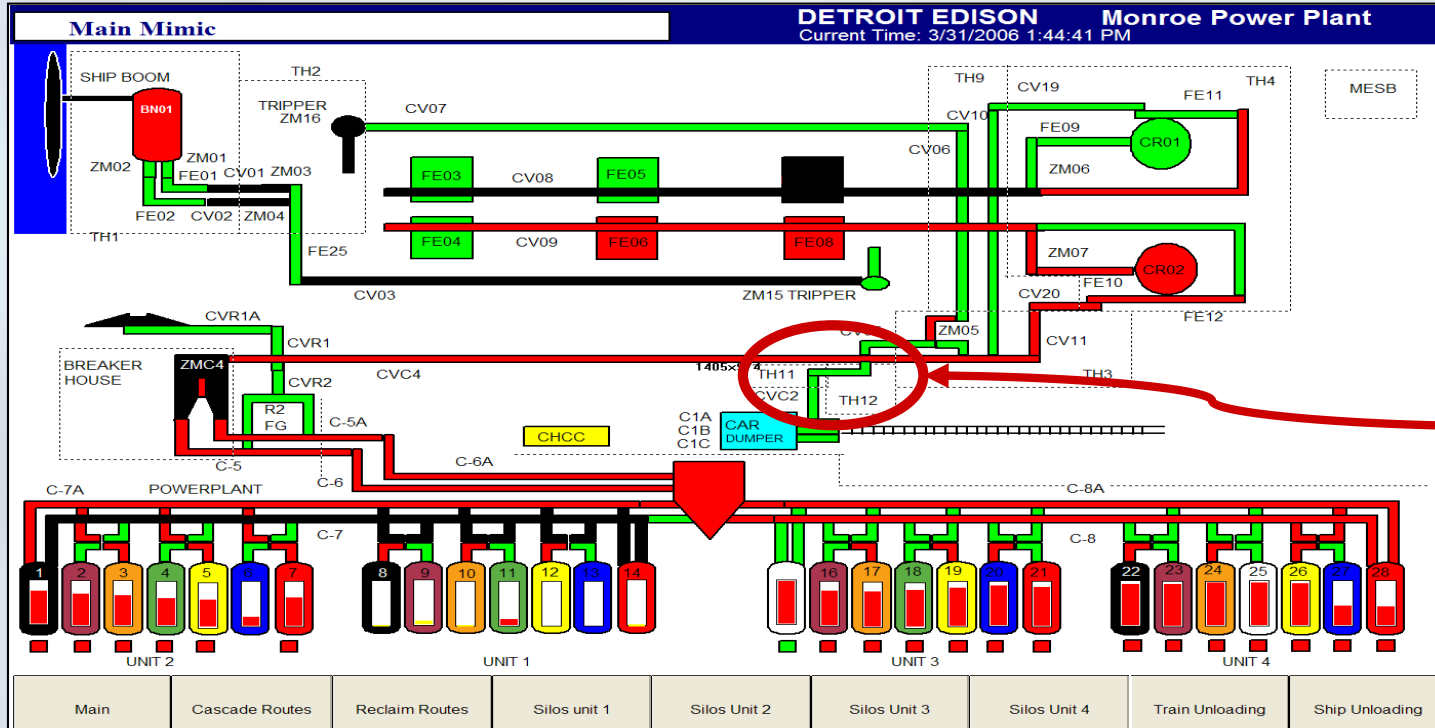


Fleet Performance Analysis (PMAx)

Thermal Performance Calculation Engine

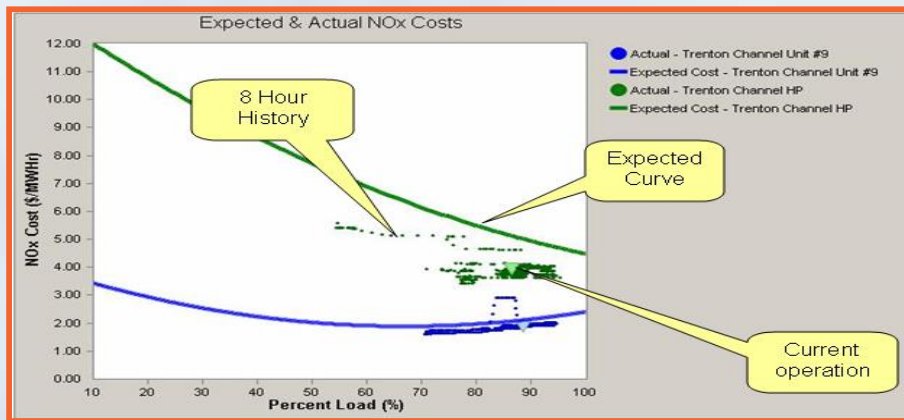


Digital Fuel Tracking System

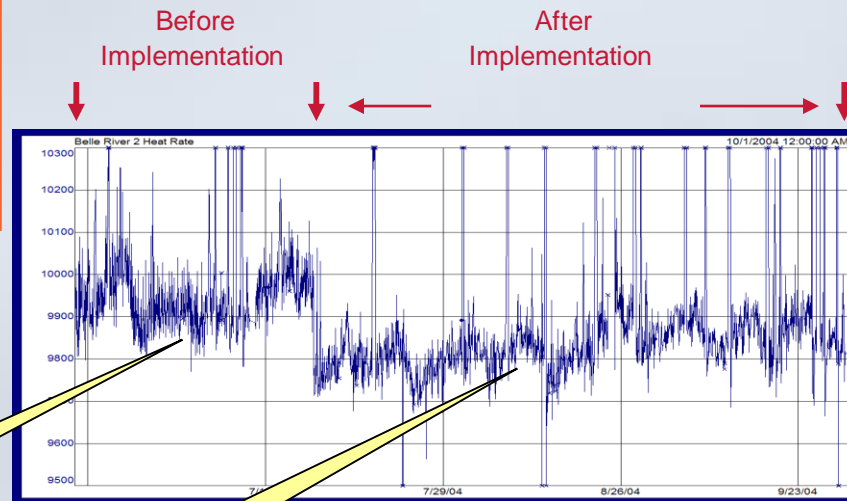


On-line
Fuel Analyzer

NOx Emissions Strategy



NOx Reduction with Improved Heatrate



Primary focus is
NOx reduction
only

Focus on
operating near
NOx budget
curve

Electronic Operator Rounds

RFID Technology / PI Manual Logger



RFID Tags



Industrial PDA (Symbol MC9060S)



Tablets

The screenshot displays the 'Data Entry - east wing' application window. It contains several panes:

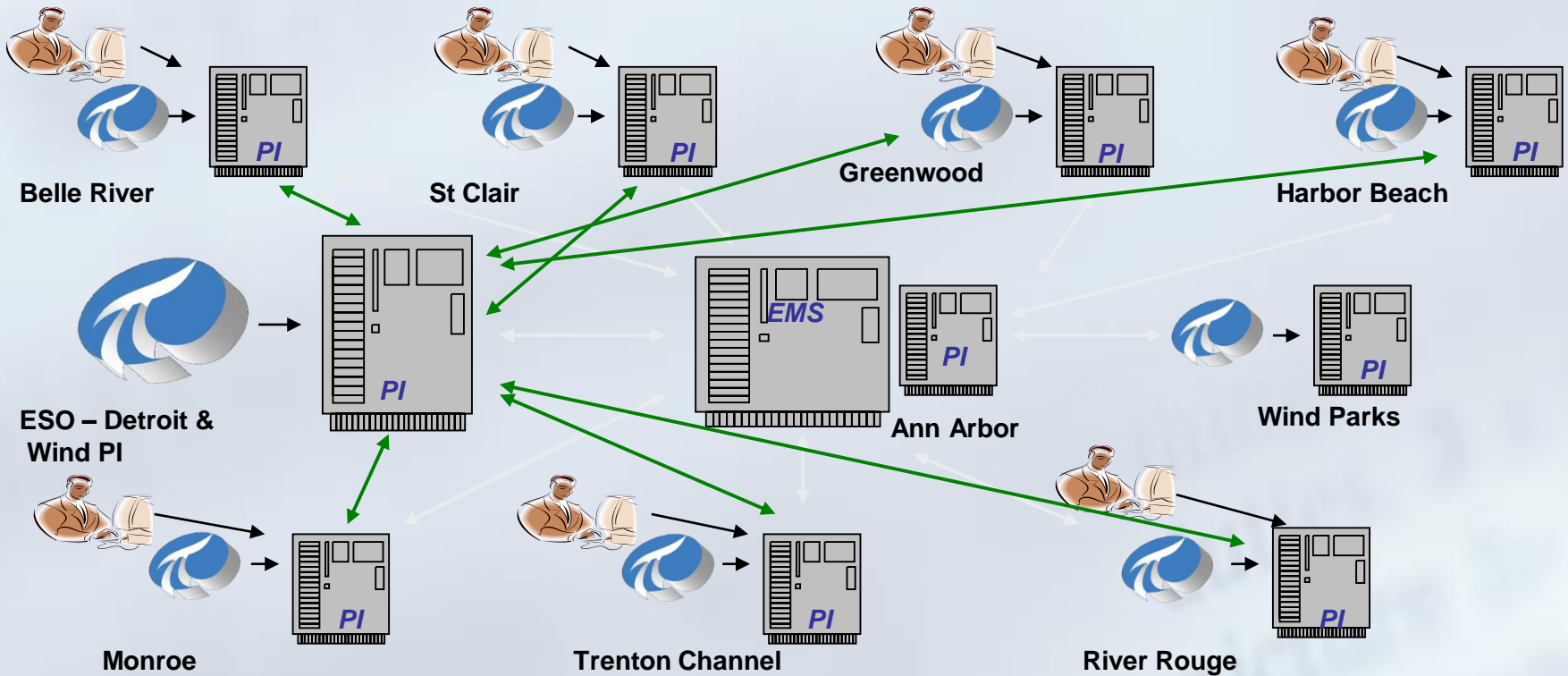
- Tour Run Info:** Fields for Tour Name (east wing), Tour Description, Workstation or Device ID (WEATHERTOP), User Name (pirl), Tour Run Time Stamp (12/17/2008 6:00:00 AM), and Tour Comment.
- Data Entry Form:** Fields for Tag Name (BA.CONC.1), Tag Value (a dropdown menu with options like Low Alarm, No Alarm/Unack, Hi Alarm/Ack, etc.), and Operator Instructions.
- Tag Info:** A table showing tag attributes and values.
- Tag List:** A list of tags with expandable details.

Attribute	Value
Tag Name	BA.CONC.1
Tag Description	Concentration React
Eng Unit	DEG. C
Point Type	Float
Barcode	
Conditional Spec	False
Clock Scheduling	False
Data Entry Format	
Zero	0
Span	200
LoLo Limit	

Tag Name	Value
BA.CONC.1	AF_w120d840-a007-459d-b01e-13C
BA.ACTIVE.1	
BA.LEVEL.1	
BA.PHASE.1	
BA.TEMP.1	
Boiler 1	

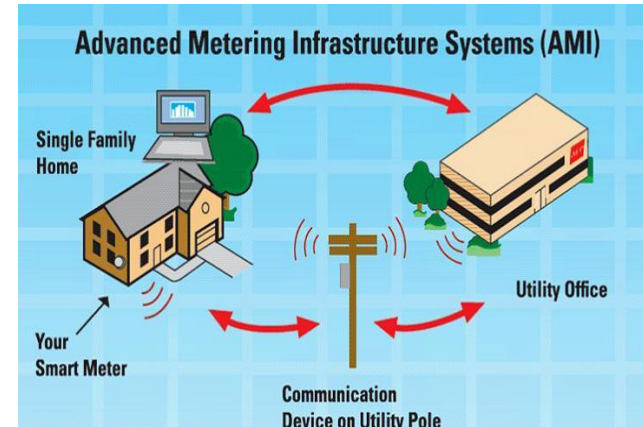
PI Manual Logger

PI to PI Process Data Conduit

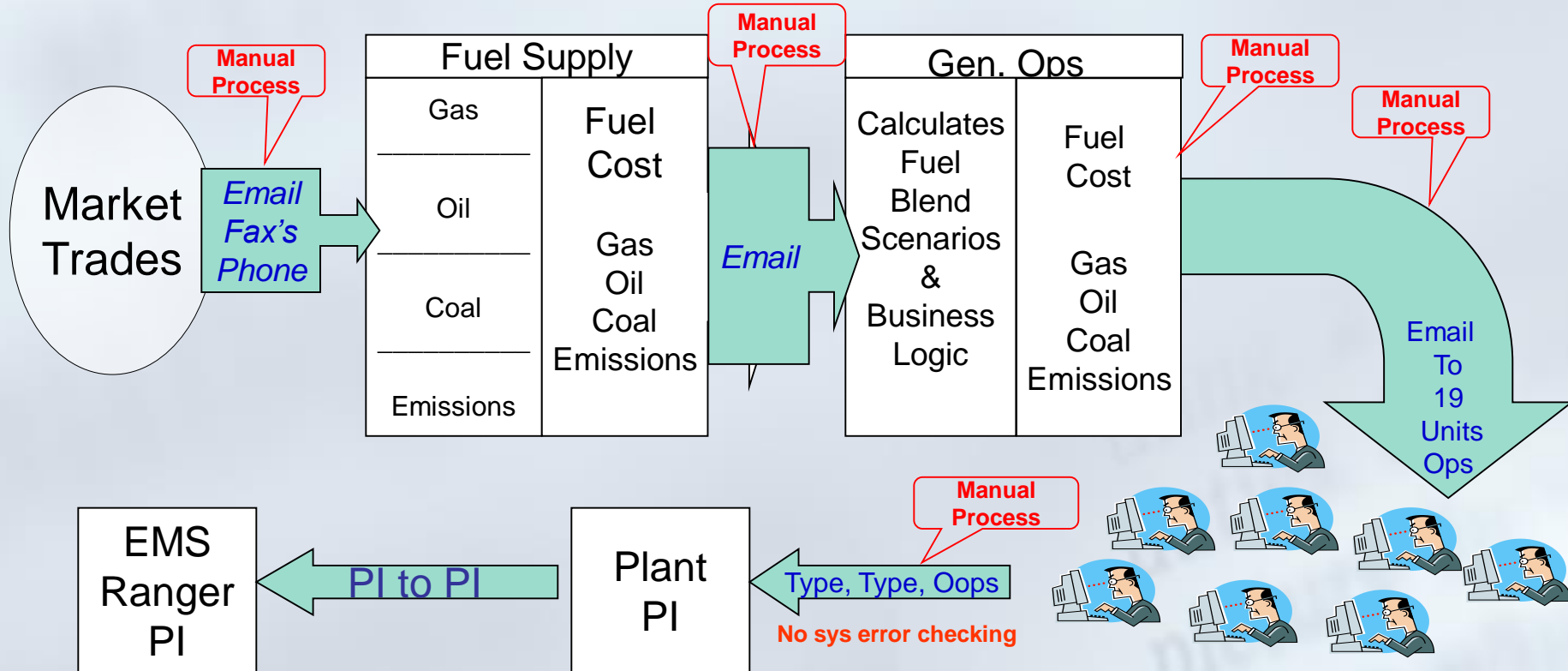


PI Advanced Metering Infrastructure (AMI)

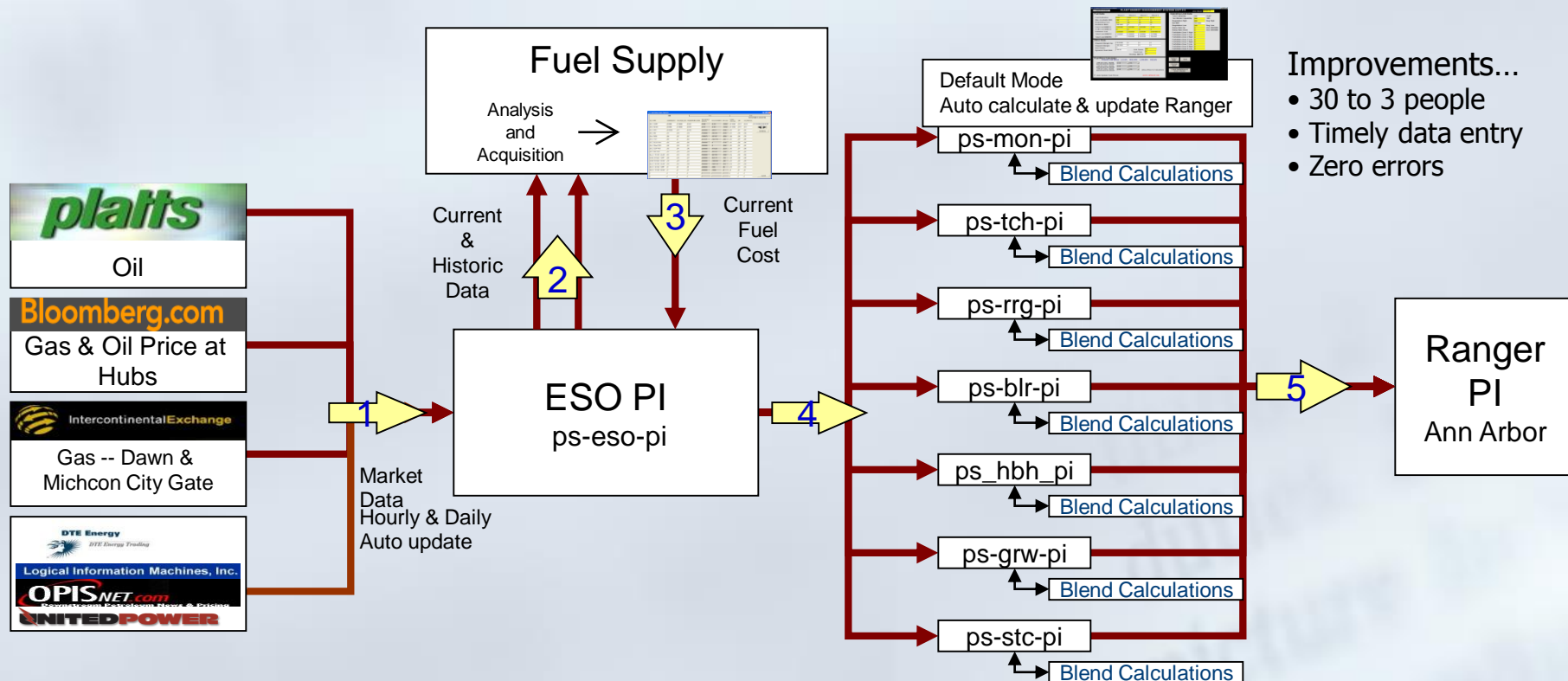
- Implemented an extensive PI Infrastructure for AMI data
- MSP Interface to capture
- 8 Server PI Farm
- 1.5 Million Plus meters data
- 27 Million PI tags and growing



Before Fuel Cost Framework



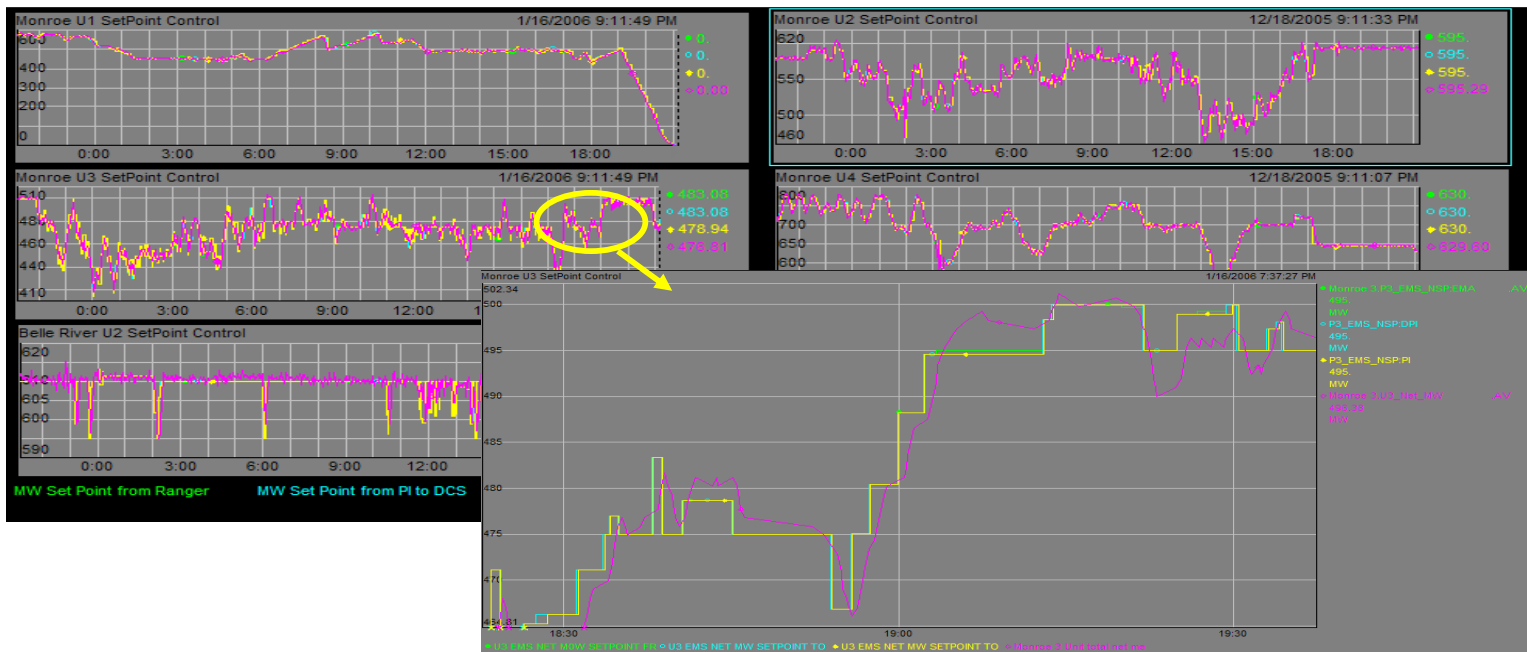
Fuel Cost Framework



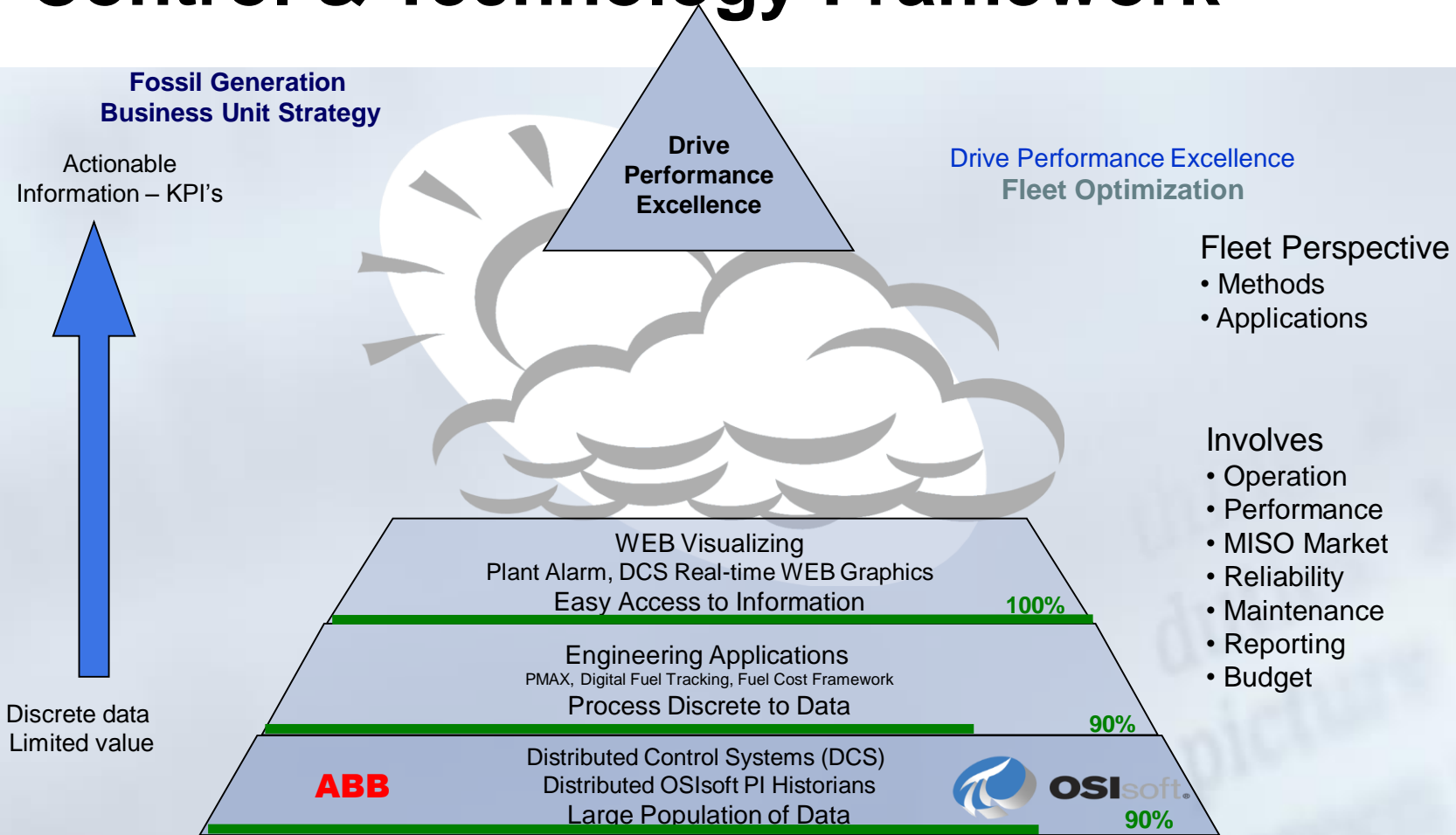
PI to PI (AGC)

AGC – Automatic Generation Control

7 largest Fossil units & Peaking Units are ramped through PI Set Point control



Control & Technology Framework



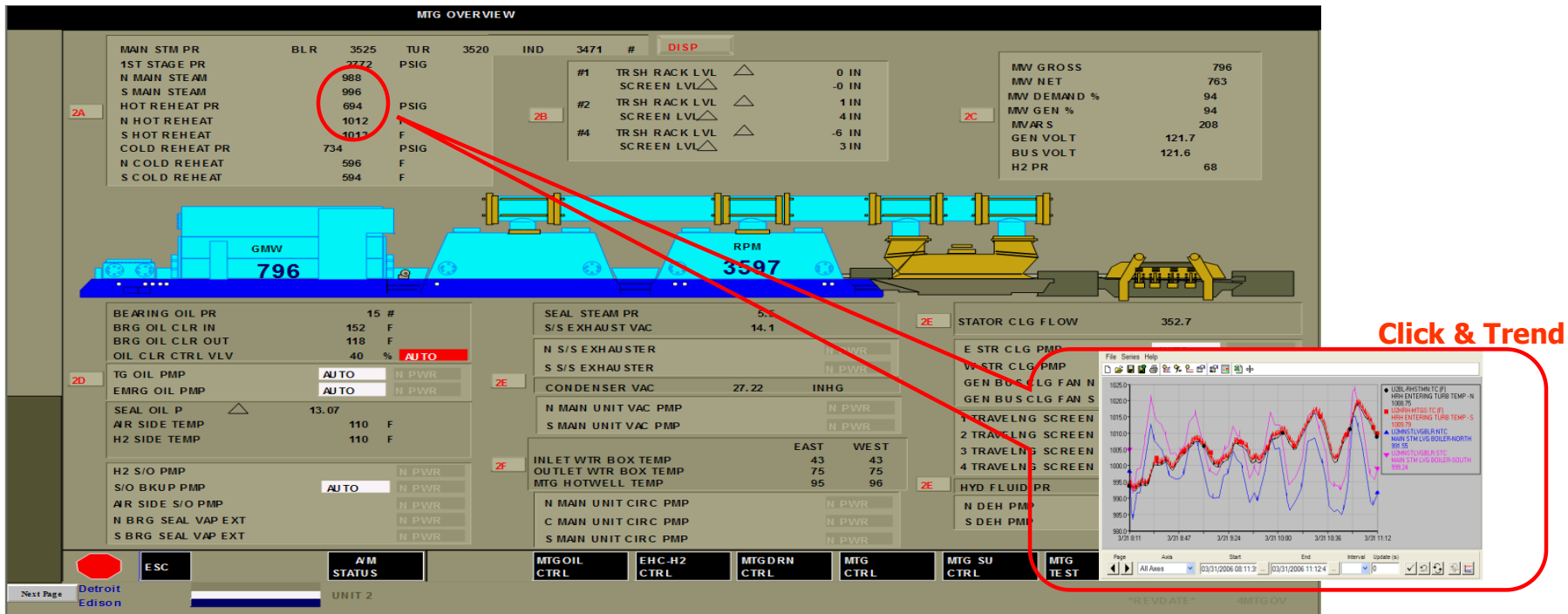
Fleet Status – PI WEB enabled

Unit	Net MW	TMC	TCAP	Unit	Net MW	TMC	TCAP	Unit	Net MW	TMC	TCAP	Load Forecast			
BR 1	0	0	0	CC 15	66	95	95	HA 12-1	0	42	42	HE	Today	Tomorrow	
BR 2	609	635	635	CC 16	53	125	125	HA 12-2	0	42	42	0100	6041	8250	
FE 2	0	0	0					HB 11	0	4	4	0200	6015	7862	
MON 1	645	730	730	BR 12-1	77	77	77	MON 11	0	14	14	0300	5691	7505	
MON 2	745	755	760	BR 12-2	75	75	75	NE 11-1	0	17	17	0400	5967	7457	
MON 3	753	760	760	BR 13	76	76	76	NE 11-2	0	16	16	0500	6212	7564	
MON 4	753	753	753	DLRY 11	0	67	67	NE 11-3	0	16	16	0600	6857	8010	
RR 2	245	255	255	DLRY 12	0	69	69	NE 11-4	0	16	16	0700	7250	8581	
RR 3	273	275	275	GW 11-1	77	77	77	NE 12	0	21	21	0800	7893	9183	
SC 1	105	105	135	GW 11-2	54	54	54	NE 13-1	0	21	21	0900	8893	10069	
SC 2	112	112	156	GW 12	19	19	19	NE 13-2	0	21	21	1000	9573	10593	
SC 3	125	135	150	BR 11											
SC 4	135	140	140	CC 11											
SC 6	245	255	280	CF 11											
SC 7	329	329	329	DA 11											
TC 7	94	105	105	FE 11-1											
TC 8	73	80	80	FE 11-2											
TC 9	460	500	500	FE 11-3											
GW 1	369	450	785	FE 11-4											
HB 1	84	84	84	HA 11-1											
LUD 1	0	0	0	HA 11-2											
LUD 2	0	0	0	HA 11-3											
LUD 3	0	0	0	HA 11-4											
LUD 4	-319	0	319												
LUD 5	0	0	0												
LUD 6	-322	0	322												
Plant Generation		6281		Ludington											
Ludington Generation		0		DE EE		7293									
Peaker Generation		378		Transactions											
Misc. Generation		85		Firm Purchase											
Total Generation		6745		Non-Firm Purchase											
Total Load		7573		Firm Sale											
Steel Load		289		Non-Firm Sale											
				Service Area Load											
				Retail Schedule											

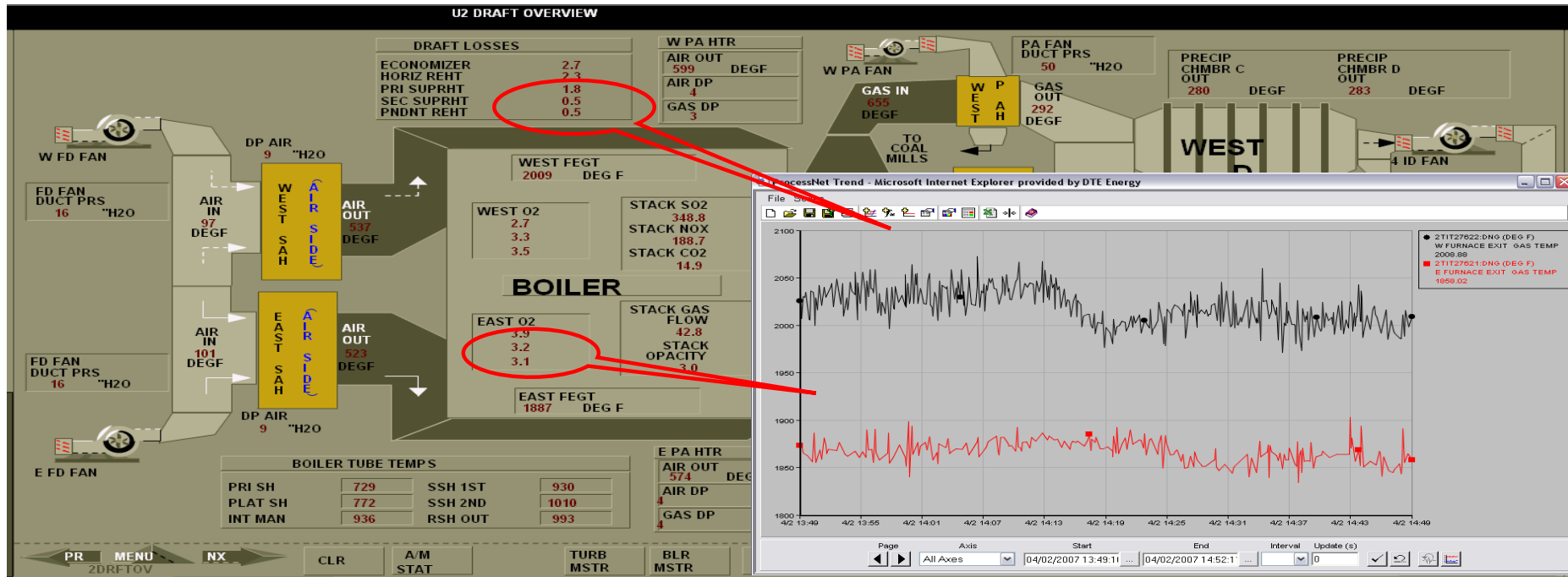
COAL MILLS												FANS				COND				FW PUMPS				BF		Circ		VP		H																																																																																																																																																																																																																																																																																																																																																																																																																																																																																																																																																																																																																																																																																																																																																																																																																																																																																																																														

Real-Time DCS Operator Displays

6000 real time dynamic actively linked WEB DCS graphics

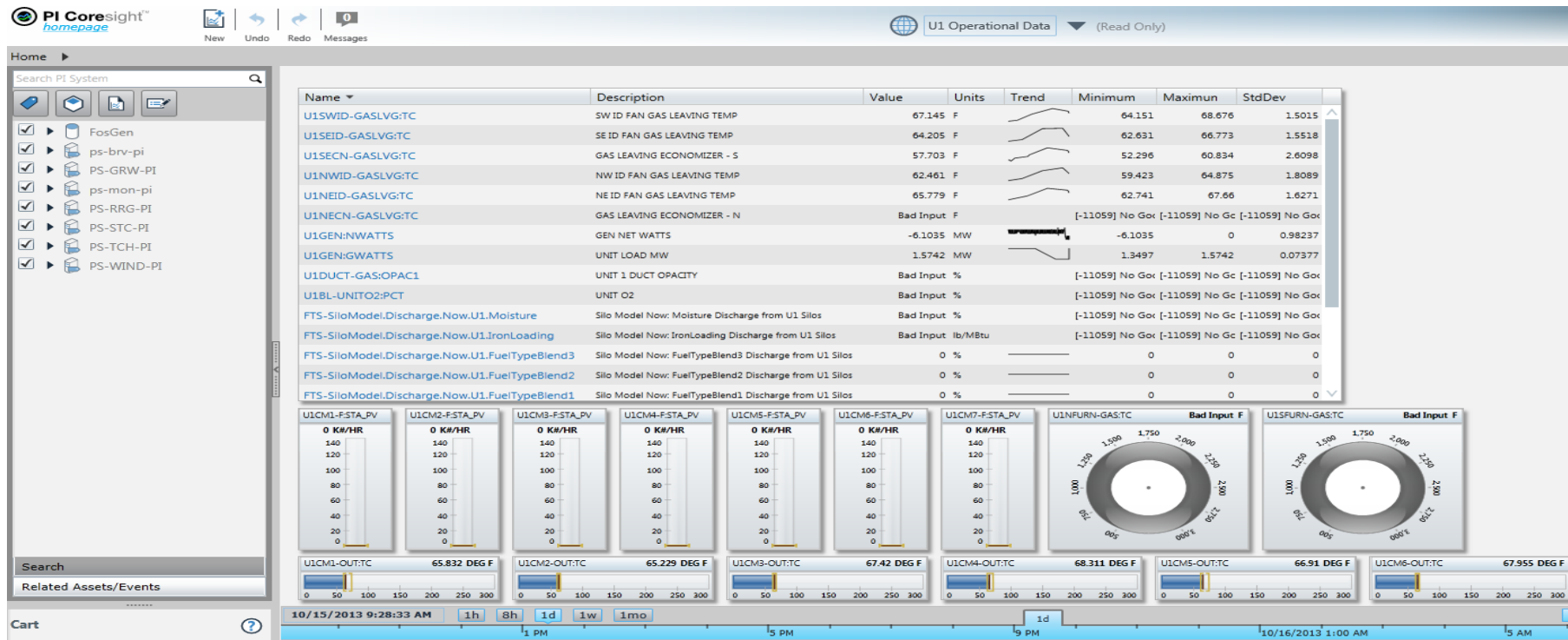


PI enabled - Event Re-play

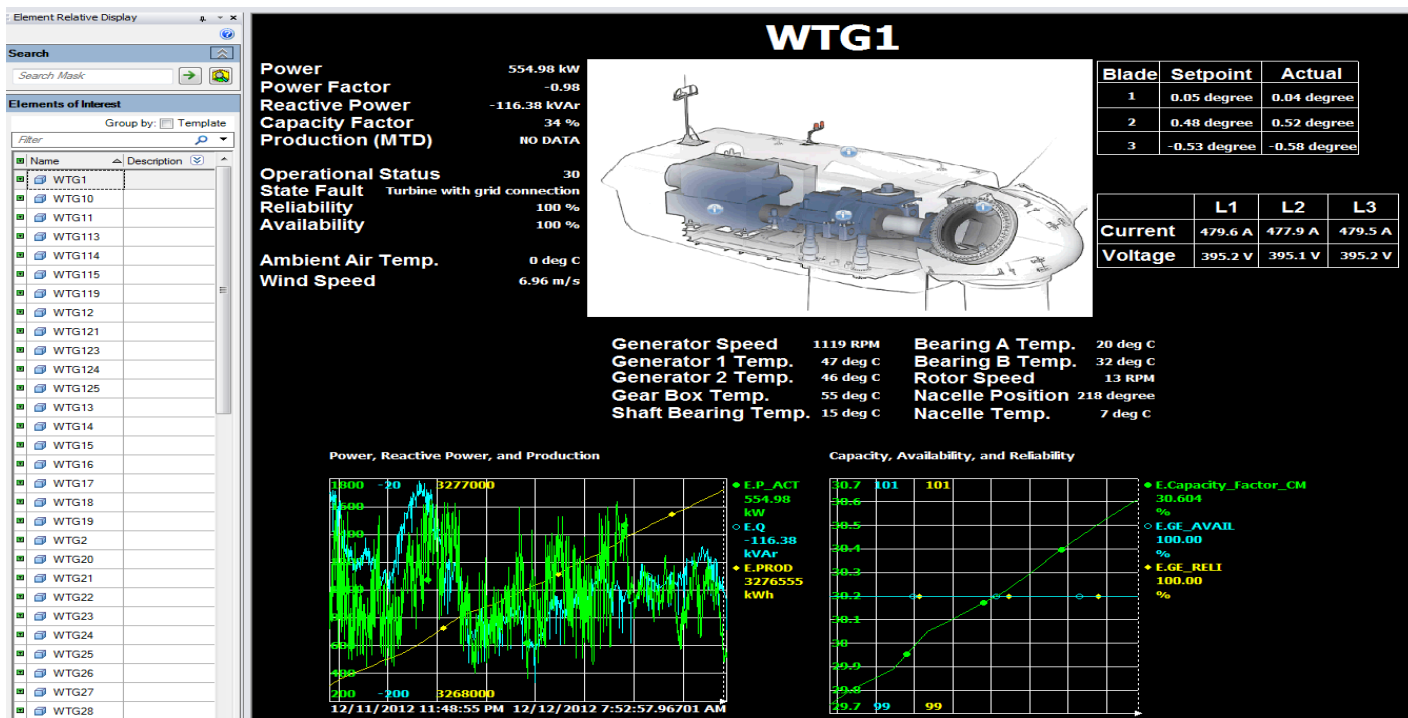


Re-play events using historical PI data

PI Coresight Displays



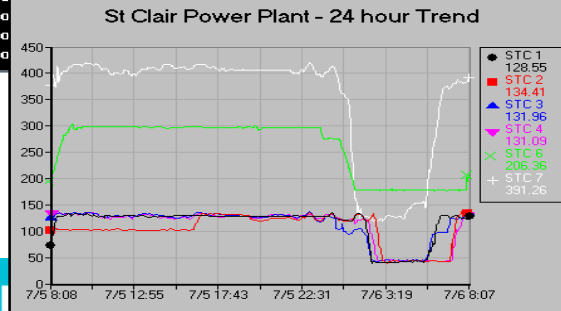
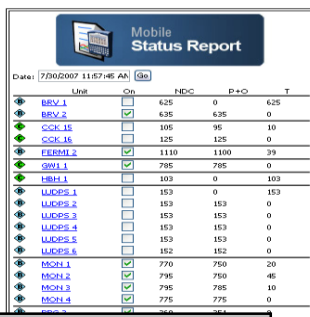
Real-Time Wind Turbine Display



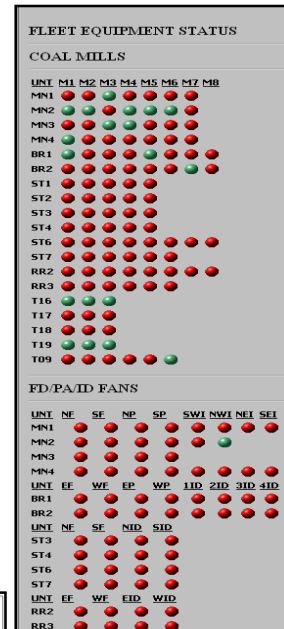
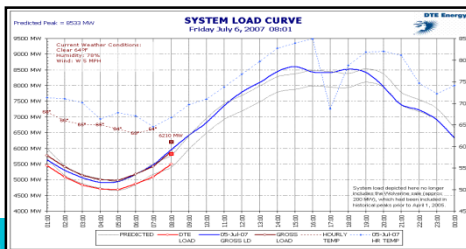
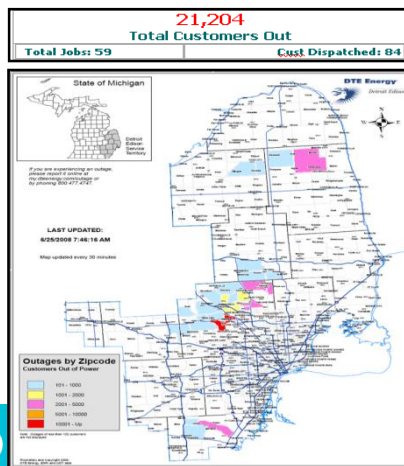
PI WEB reports available on your Mobile Device

<u>Unit</u>	<u>GrossMW</u>	<u>Rev/Min</u>
Monroe Unit 1	547	3,599
Monroe Unit 2	44	3,600
Monroe Unit 3	438	3,599
Monroe Unit 4	545	3,599

<u>Bearing</u>	<u>Vibr</u>	<u>Temp</u>
1 Mon - 12	0.8	168.0
1 Mon - 11	2.4	144.1
1 Mon - 10	2.7	156.4
1 Mon - 9	1.9	172.7
1 Mon - 8	3.2	166.2
1 Mon - 7	4.4	160.0
1 Mon - 6	1.3	177.4
1 Mon - 5	0.4	173.1
1 Mon - 4	4.5	176.0



Unit	Net MW	TMC	TCAP
BR 1	601	625	625
BR 2	609	635	635
FE 2	1103	1103	1103
MON 1	523	770	770
MON 2	13	13	13
MON 3	404	785	785
MON 4	513	565	775
RR 2	193	251	251
RR 3	243	243	276
SC 1	121	125	125
SC 2	125	125	125
SC 3	125	125	125
SC 4	124	125	125
SC 6	183	270	270



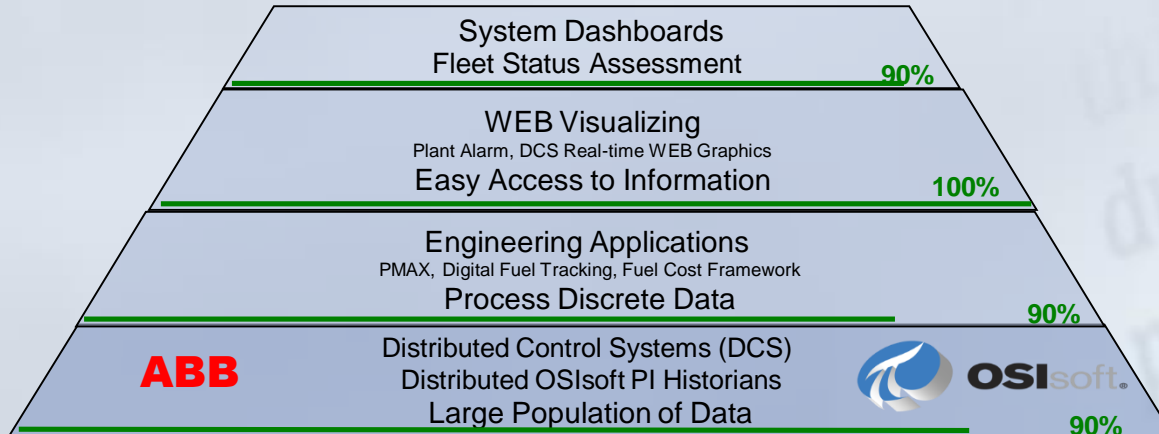
Control & Technology Framework

Fossil Generation Business Unit Strategy

Actionable
Information – KPI's

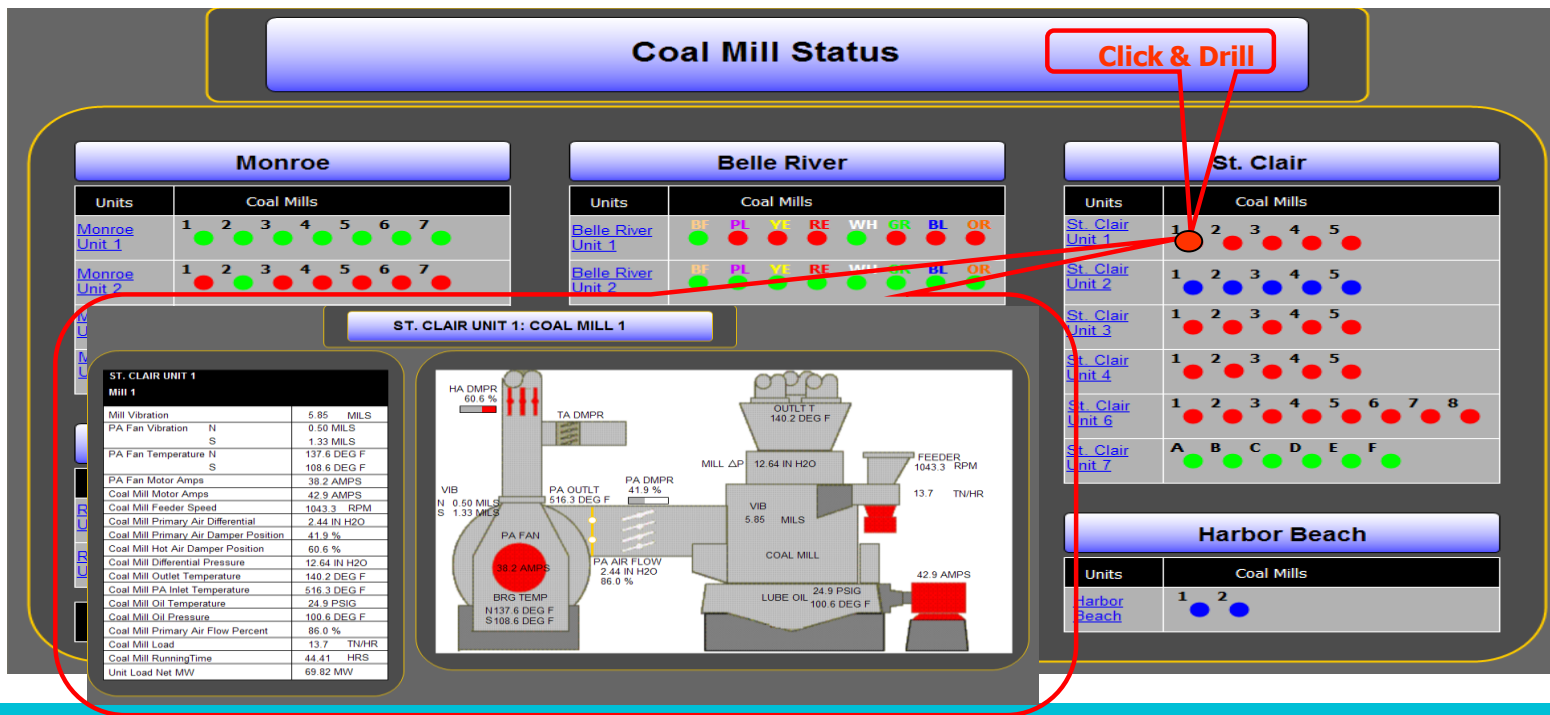


Discrete data
Limited value



System Dashboards – PI Enabled

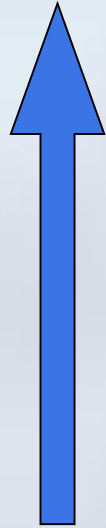
2000 real time dynamic actively linked WEB System graphics



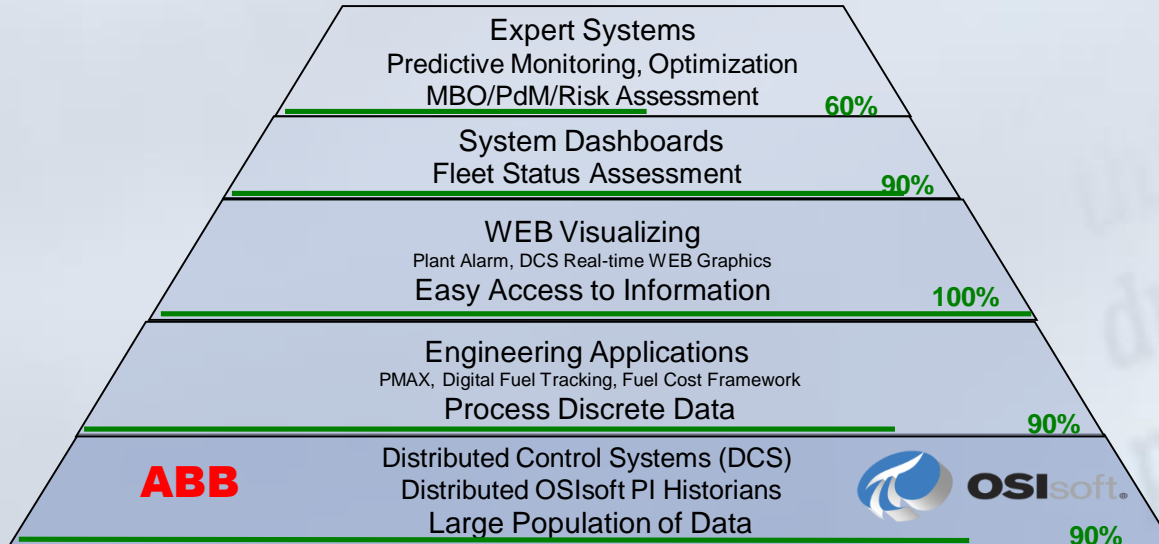
Control & Technology Framework

Fossil Generation Business Unit Strategy

Actionable
Information – KPI's



Discrete data
Limited value



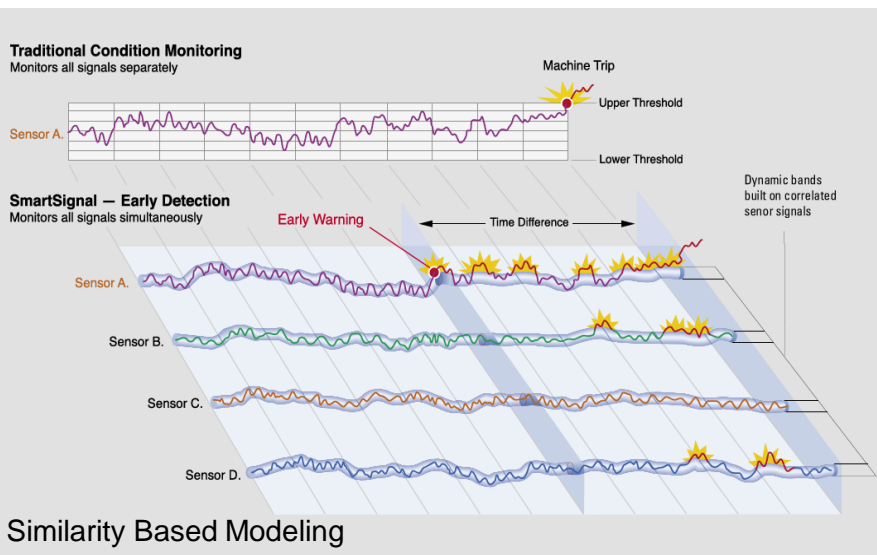
Advanced Pattern Recognition

Equipment Condition Monitoring SmartSignal

PI Dependent Expert Systems Combustion Optimization – NeuCo

Objective – Coal pile to stack Optimization

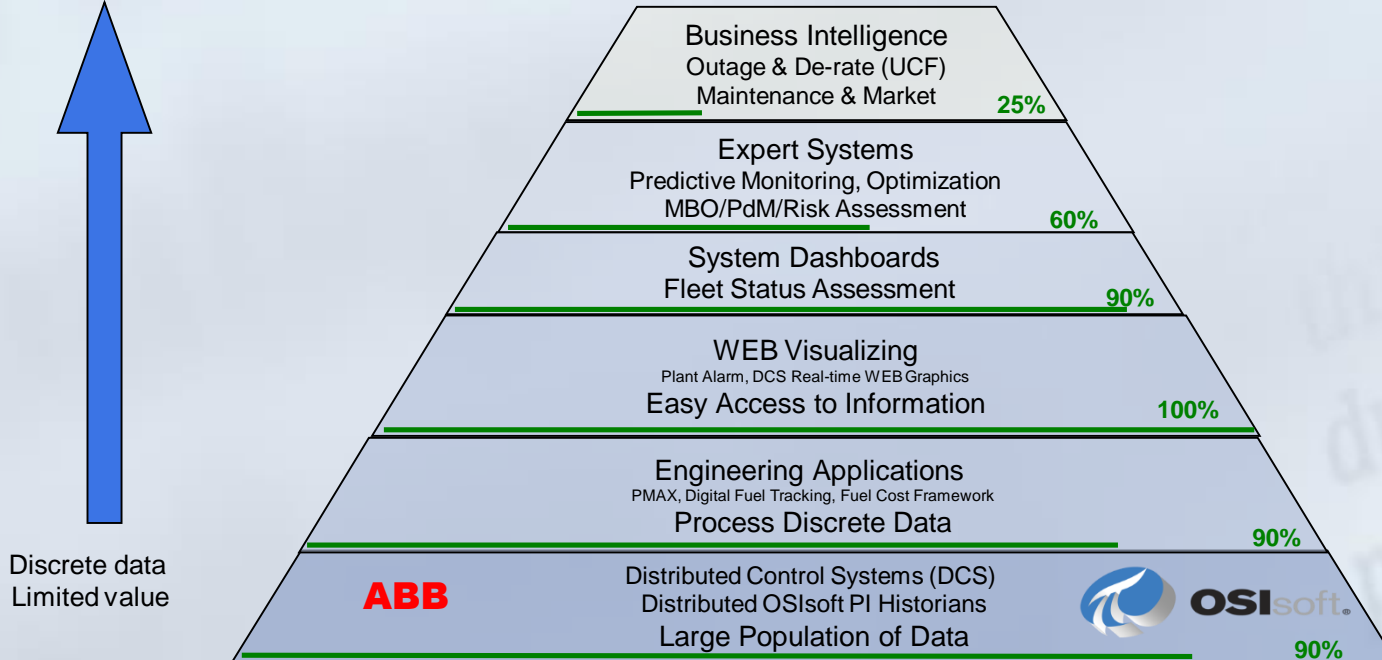
- Closed loop Neural Net Optimization
- In Service St Clair Unit 7 (Neural Mode November 2007)
- Installation in progress on Belle River 2 (2008)
- Planned for Monroe Units 1-4 (High PRB Utilization Project)



Control & Technology Framework

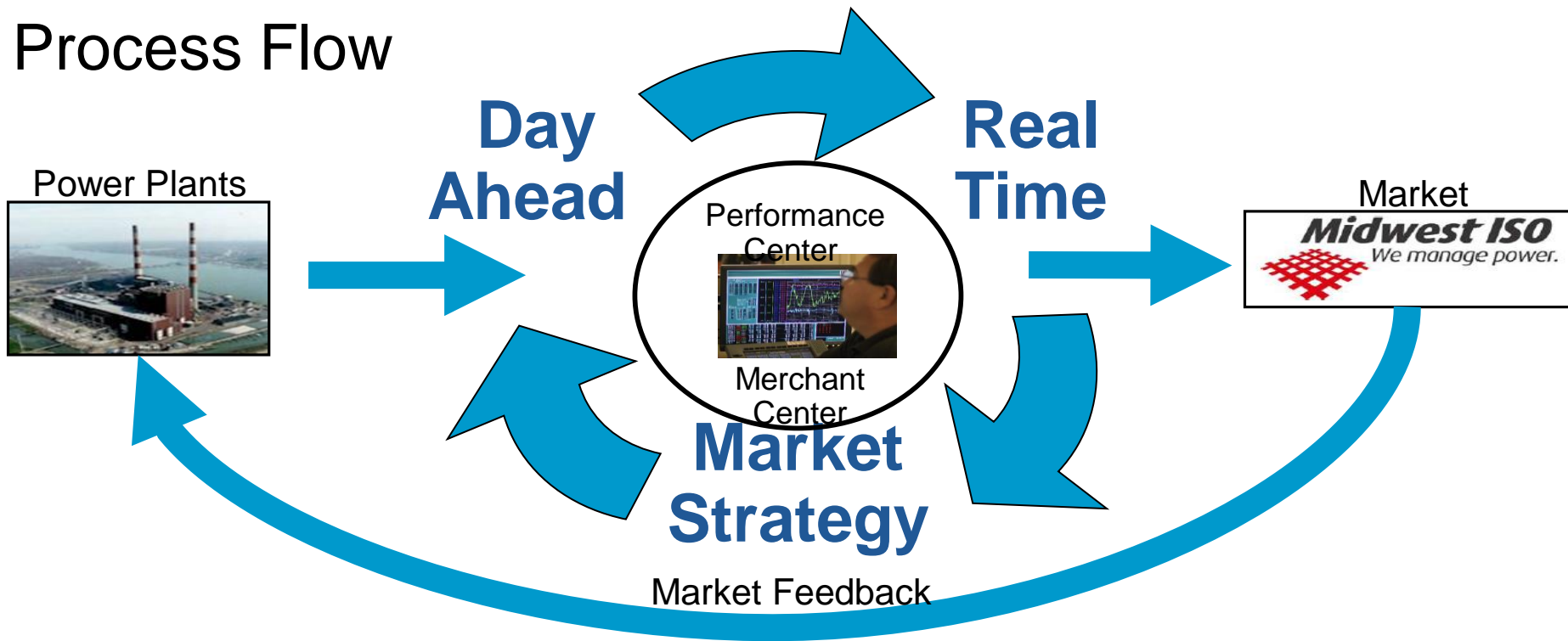
Fossil Generation Business Unit Strategy

Actionable
Information – KPI's



Unit Capacity Framework (UCF)

Process Flow



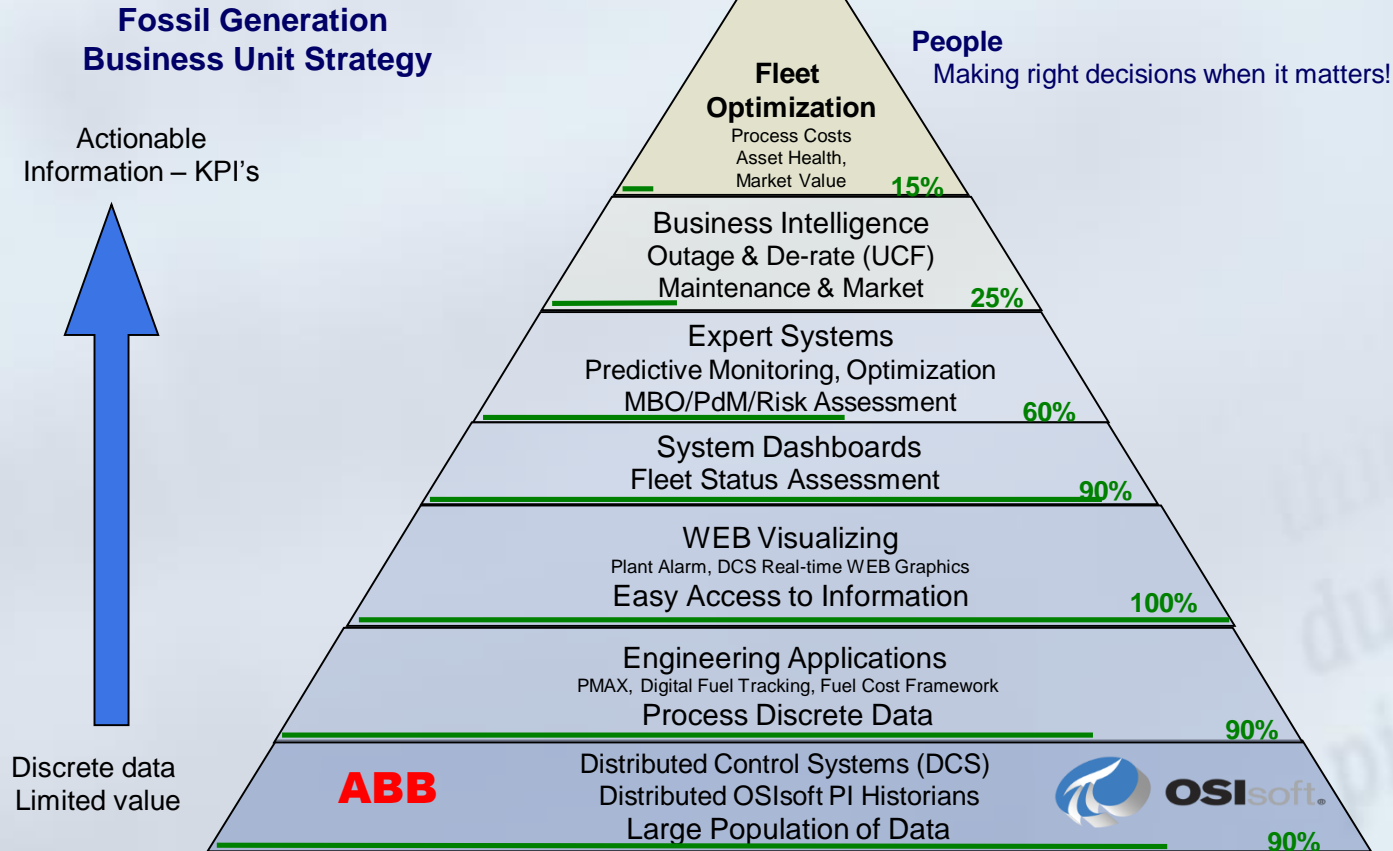
Enterprise Business Systems (EBS)

Maximo & SAP

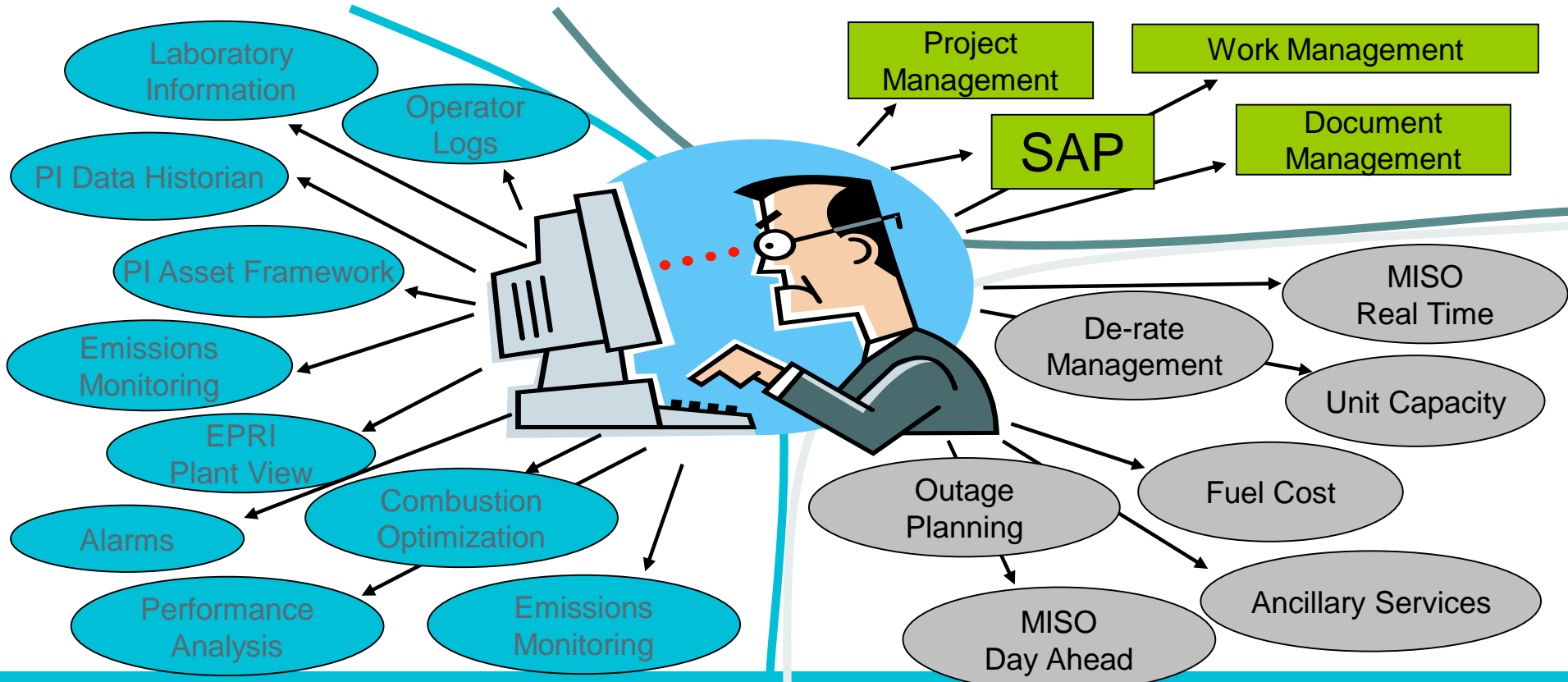
- SAP
 - Financial Information
 - Human Resources
 - Supply Chain
- Maximo
 - Work Management System



Control & Technology Framework



No Shortage of Information!



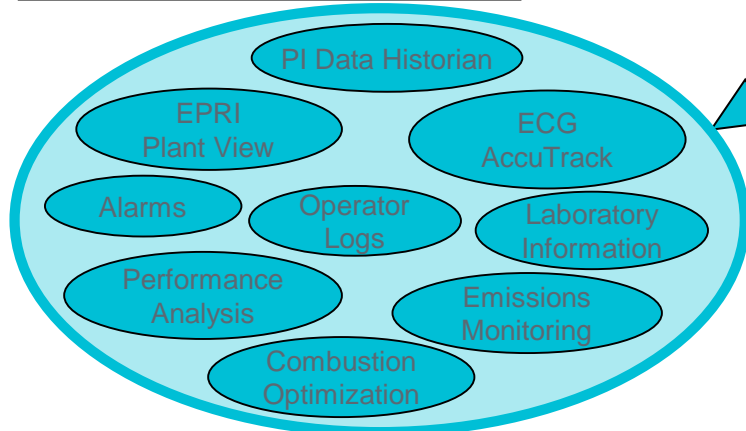
Common Methodology



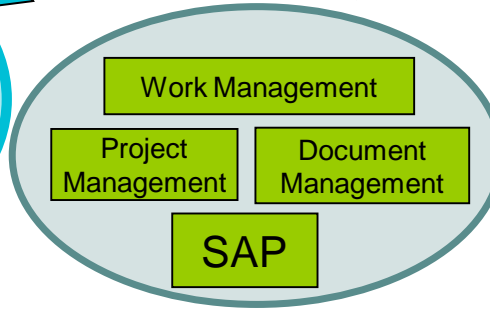
Standard GUI
Single Method

PI Asset Framework:

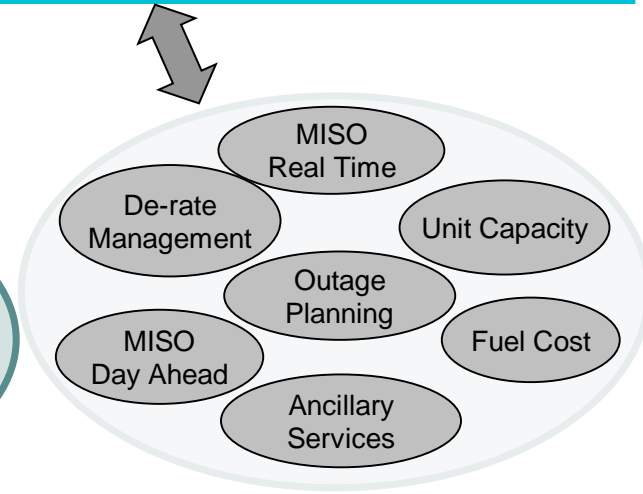
Integrated applications environment:
Consistent framework for data,
analysis, reporting and consistent
user graphical interface.



Process Information

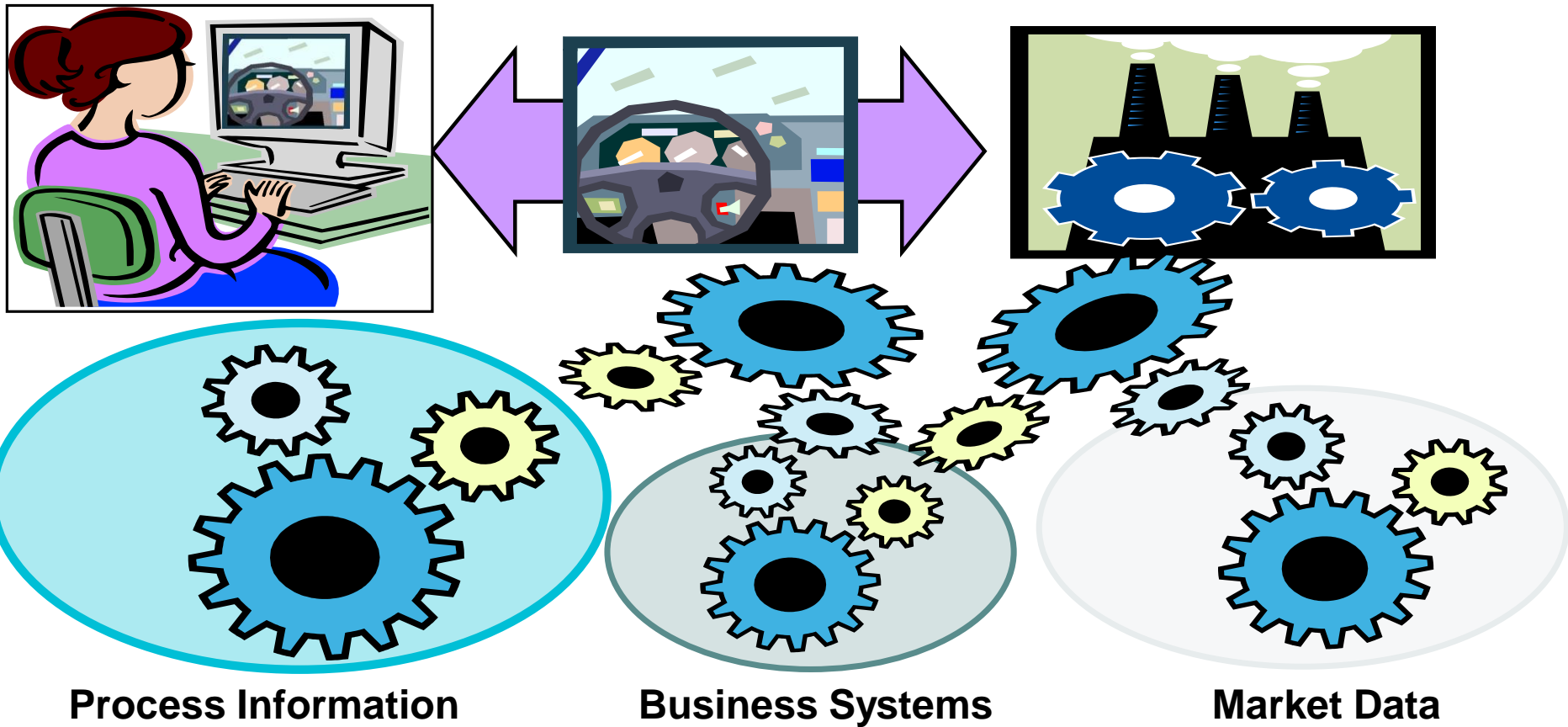


Business Systems

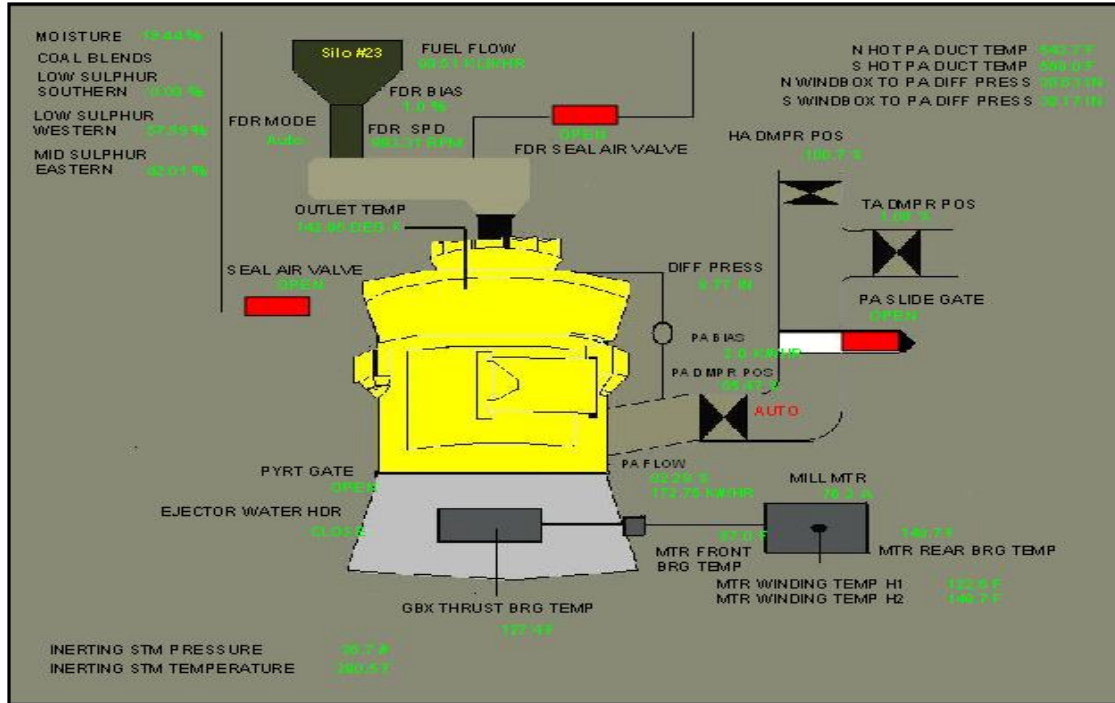


Market Data

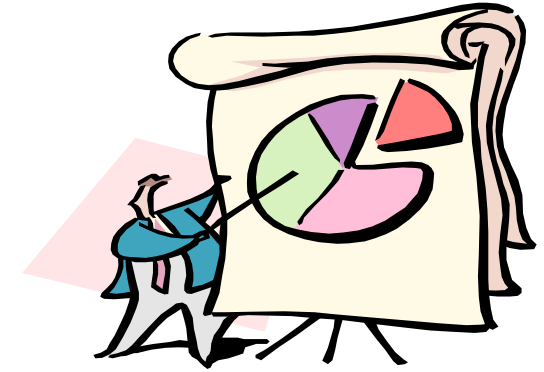
Common Structure



Fleet Performance Analysis and Optimization Pulverizer Dashboard



Process Information



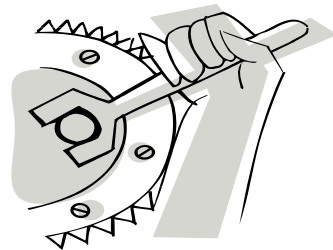
More information
is need for Analysis

Pulverizer Assessment

What information is needed?

Pulverizer

- Milling Costs
- Process Costs
- Production Costs
- EAF
- SmartSignal Watch List
- Work Performed & Work Pending
- Alarms



Pulverizer - Multiple Data Sources

Consistent Reporting

- Common Methodology
- Common Structure

Unit
Capacity

Alarms

EPRI PlantView

PI

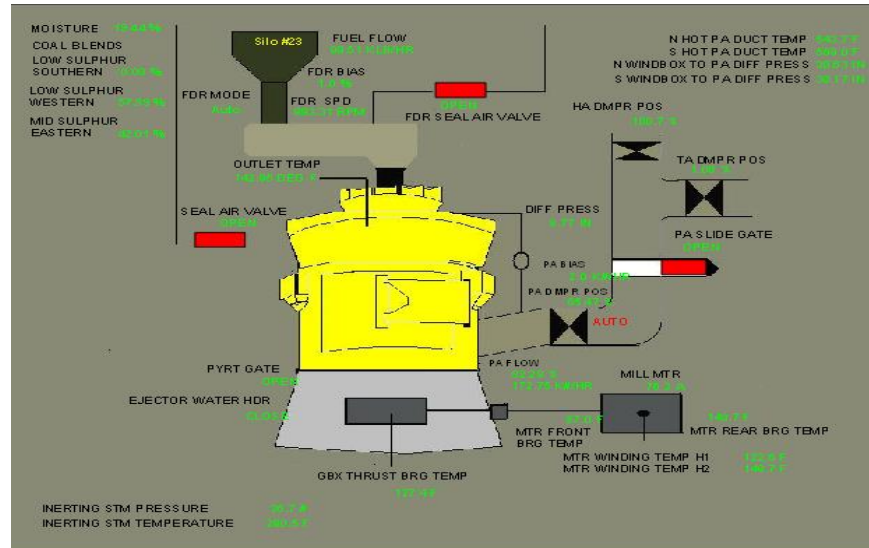
P3M

SmartSignal

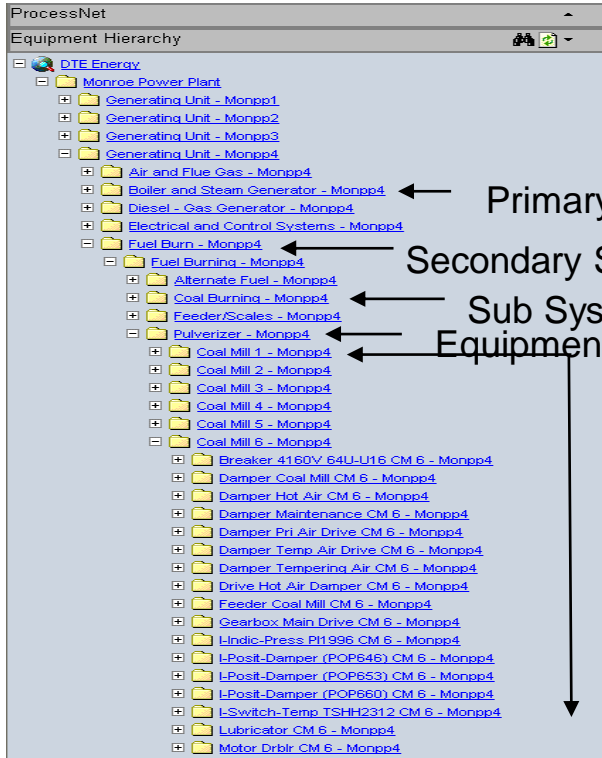
Maximo

SAP

Documentum

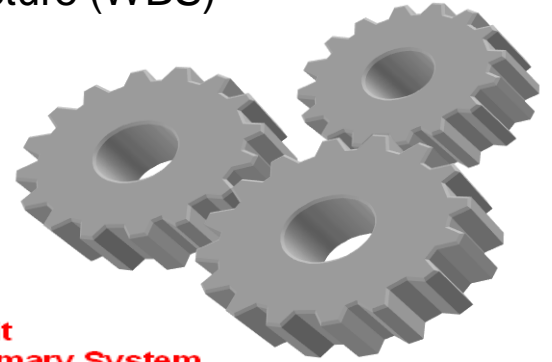


Common Thread Equipment Hierarchy



Equipment Hierarchy

- Hierarchical System Index (HSI)
- Work Breakdown Structure (WBS)



Sub Equipment

DTE Energy – Business Unit
Monroe Power Plant – Plant
Generating Unit - Monpp4 – Unit
Fuel Burn - Monpp4 – Primary System
Fuel Burn - Monpp4 – Secondary System
Pulverizer - Monpp4 – Sub System
Coal Mill 1 - Monpp4 – Equipment / Sub Equip
 Breaker 4160V 64U-U16 CM 1 - Monpp4
 Damper Coal Mill CM 1 - Monpp4
 Damper Hot Air CM 1 - Monpp4
 Damper Maintenance CM 1 - Monpp4
 Damper Pri Air Drive CM 1 - Monpp4

Pulverizer - Multiple Data Sources

Consistent Reporting

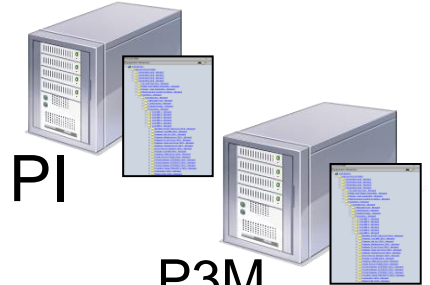
- Common Methodology
- Common Structure



Alarms



EPRI PlantView



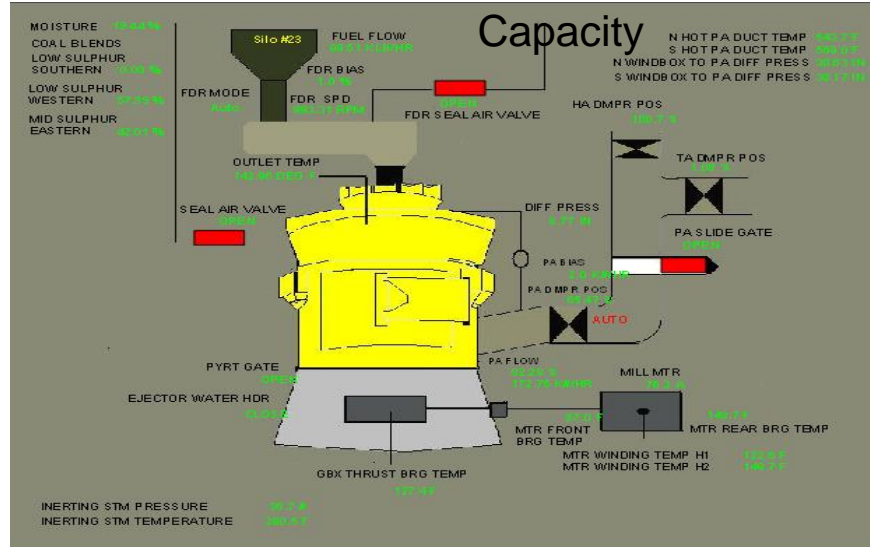
PI

P3M



SmartSignal

Unit
Capacity



Maximo

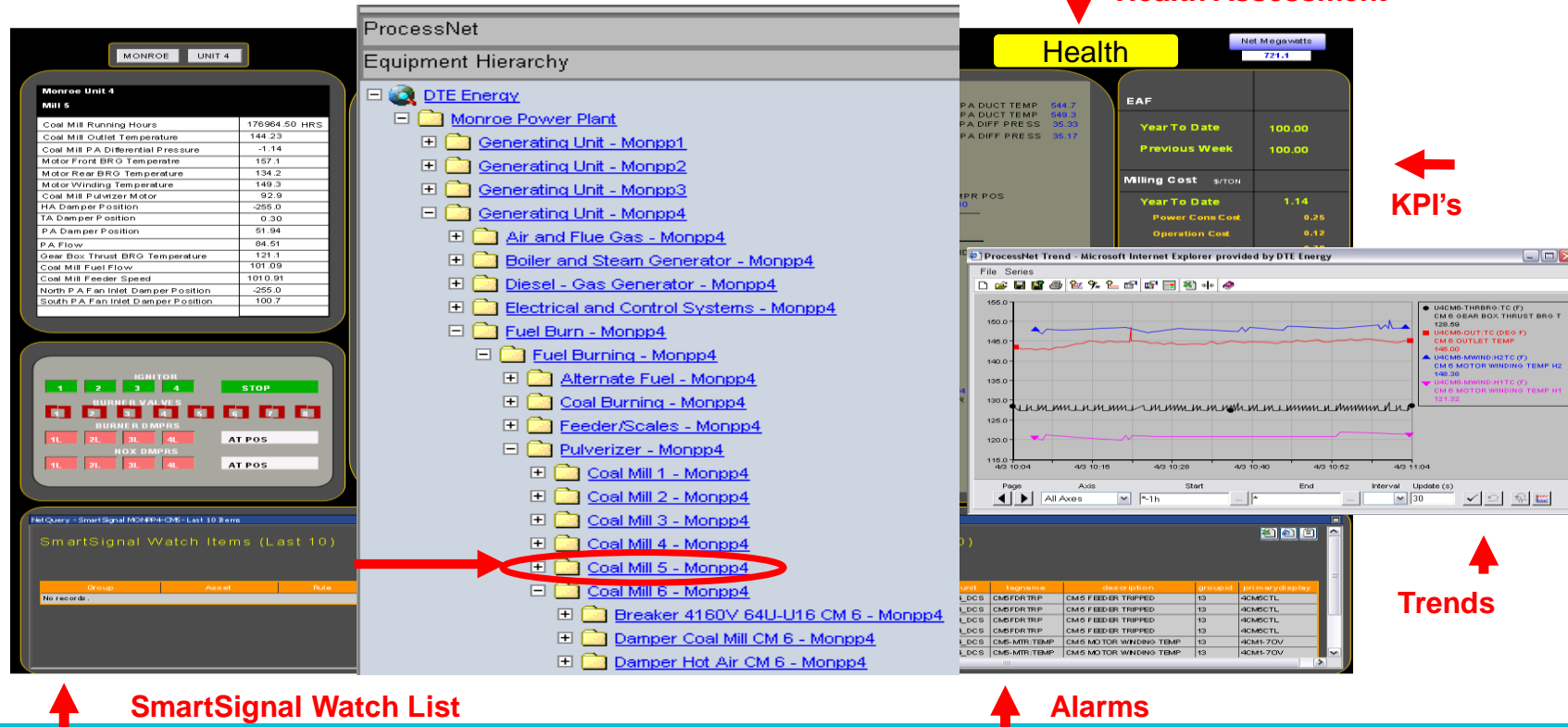


SAP

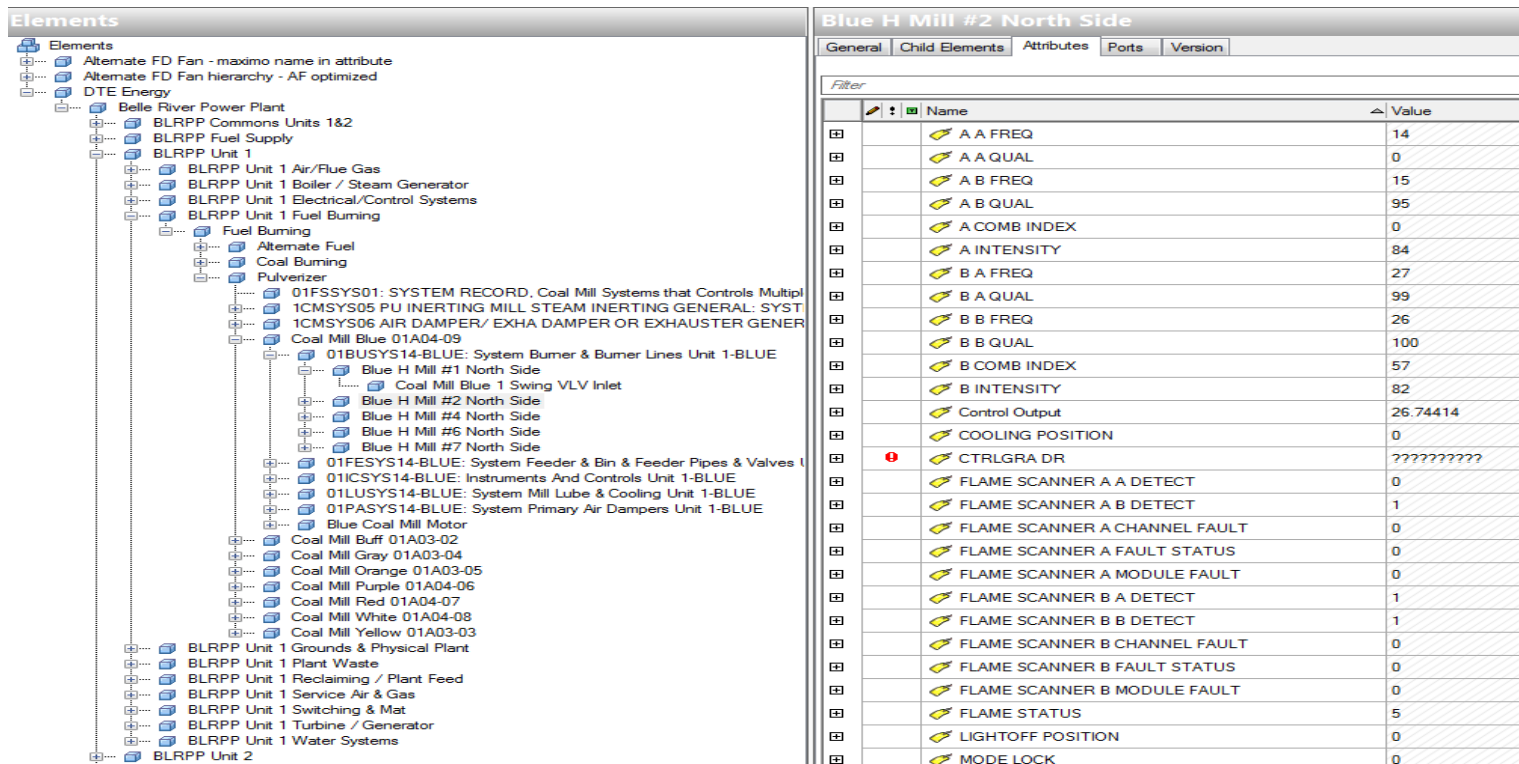


Documentum

Asset Framework Expanded System Dashboard



PI Asset Framework (AF)



Process Cost Drill Down



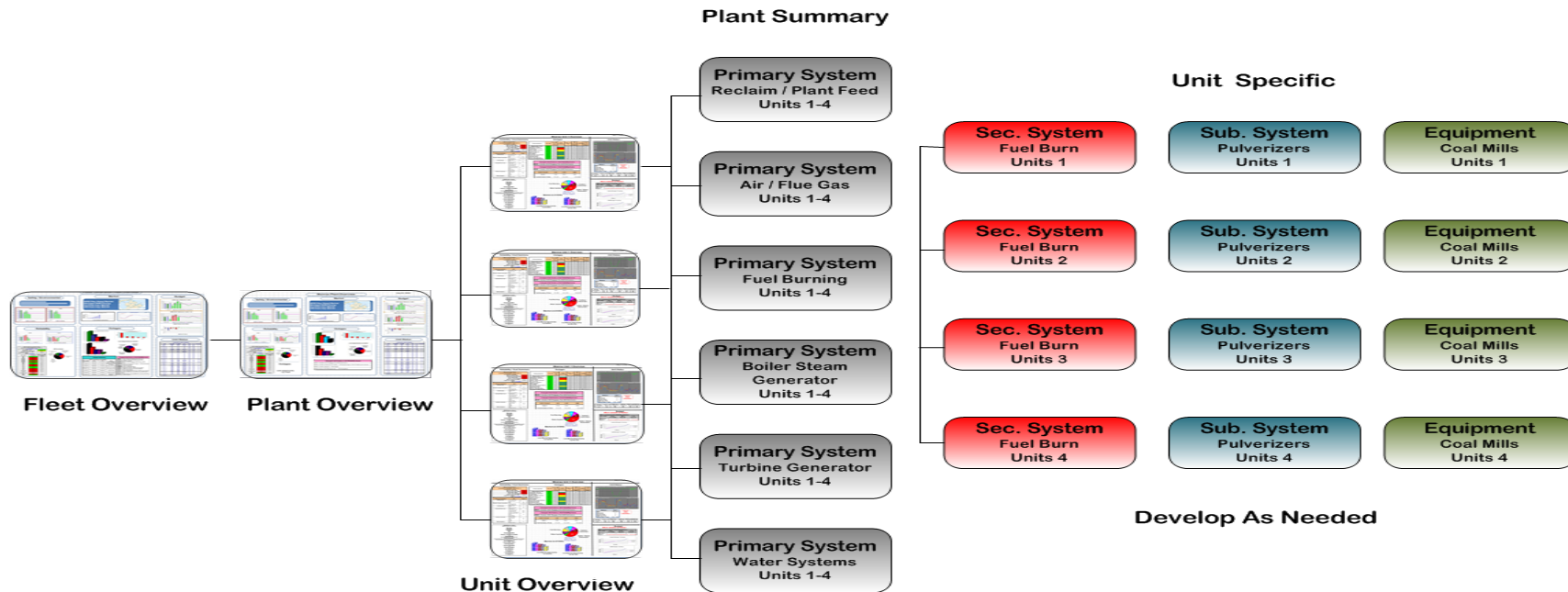
↓ Health Assessment



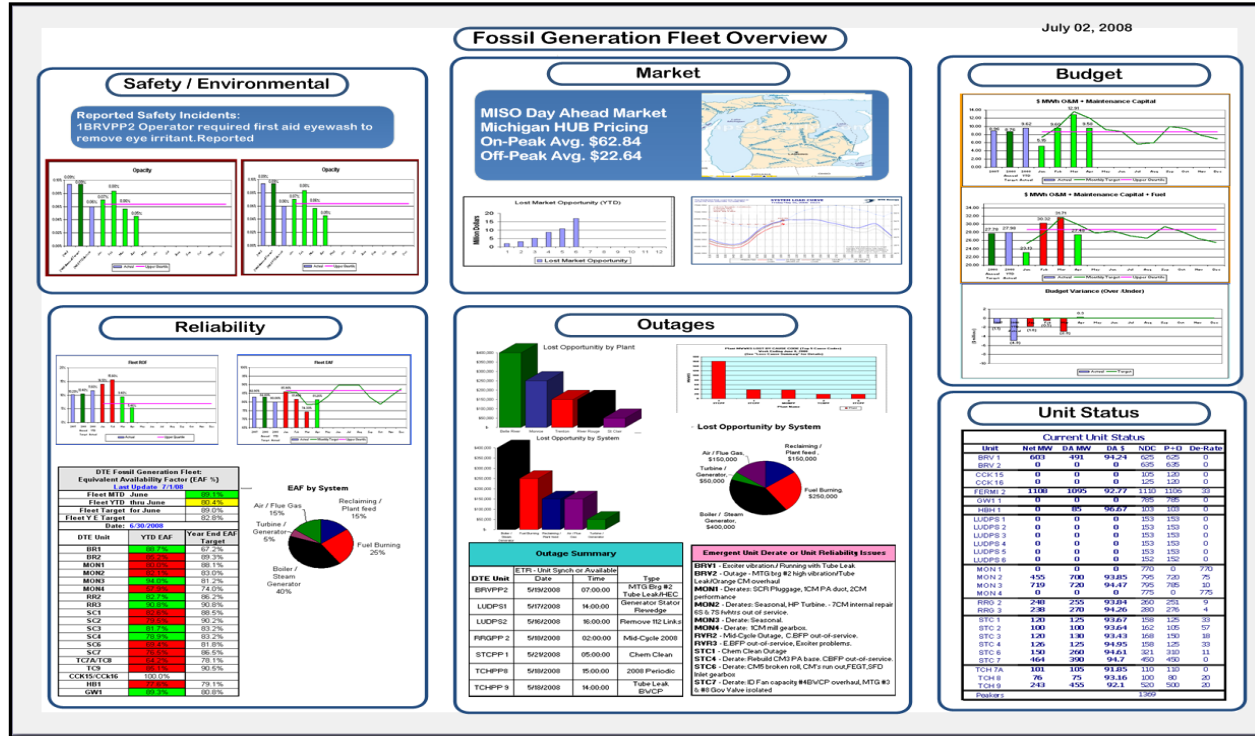
↑ Alarms


Trends

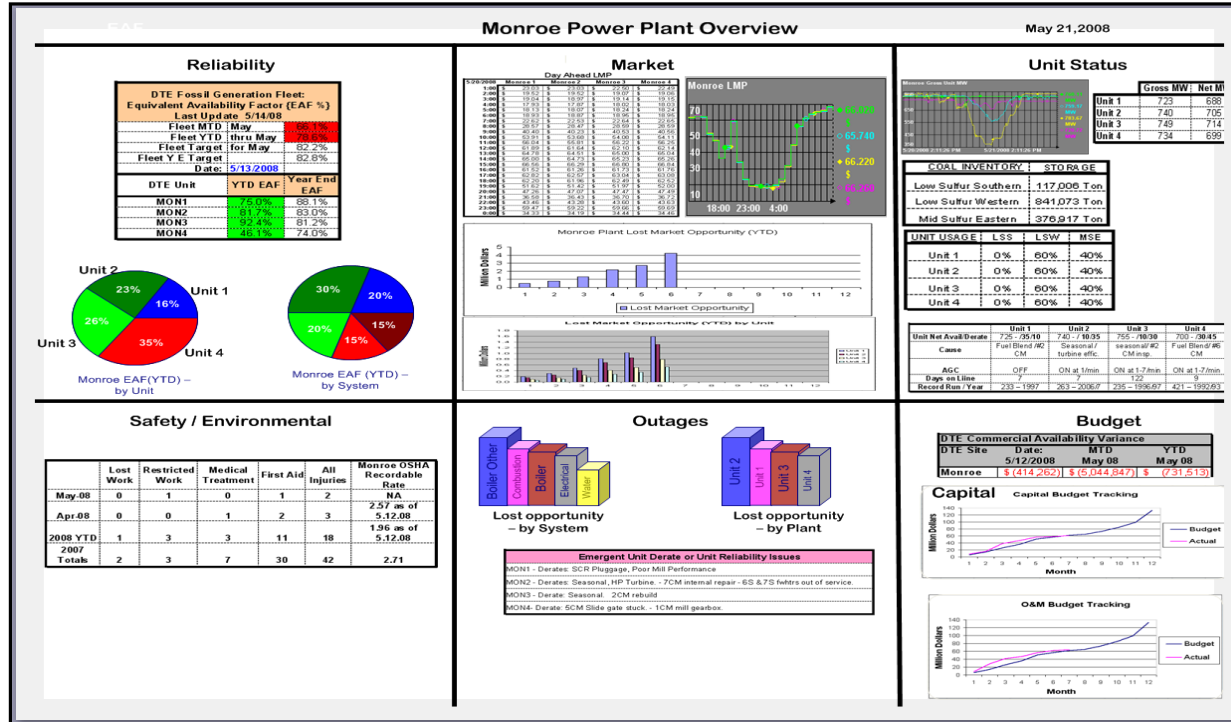
Logical Display Flow



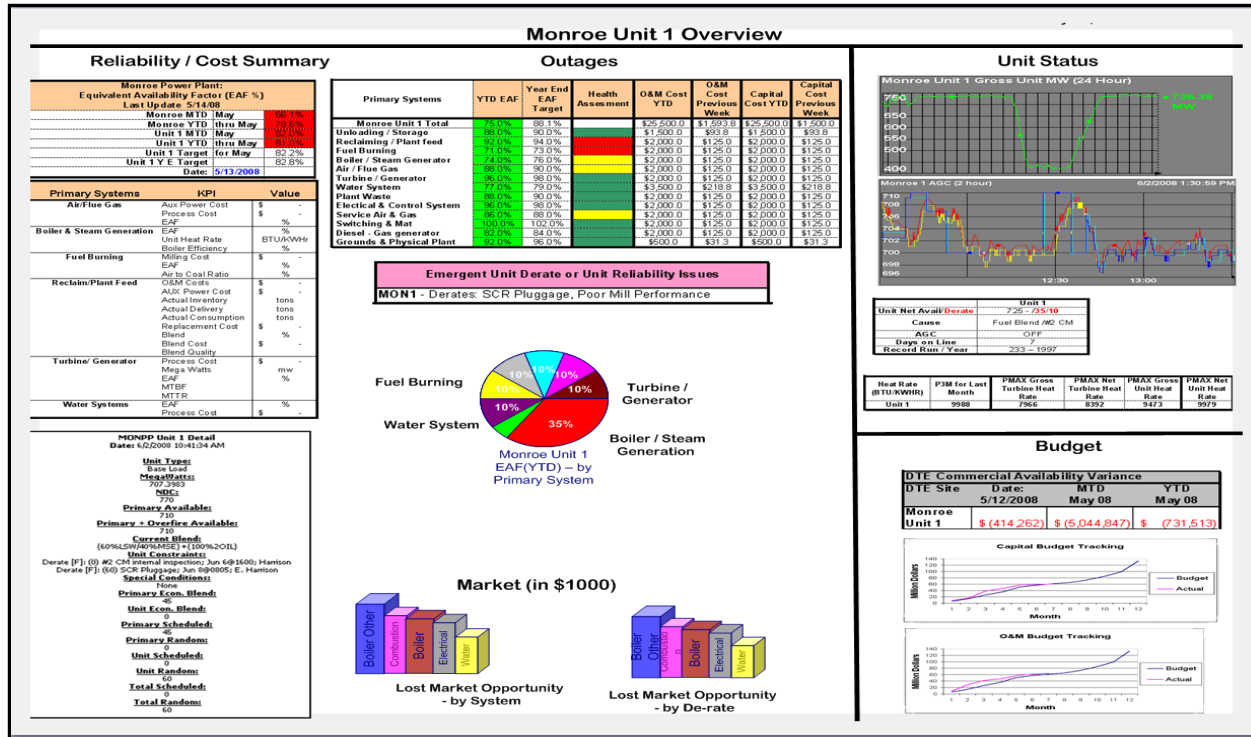
Fleet Overview



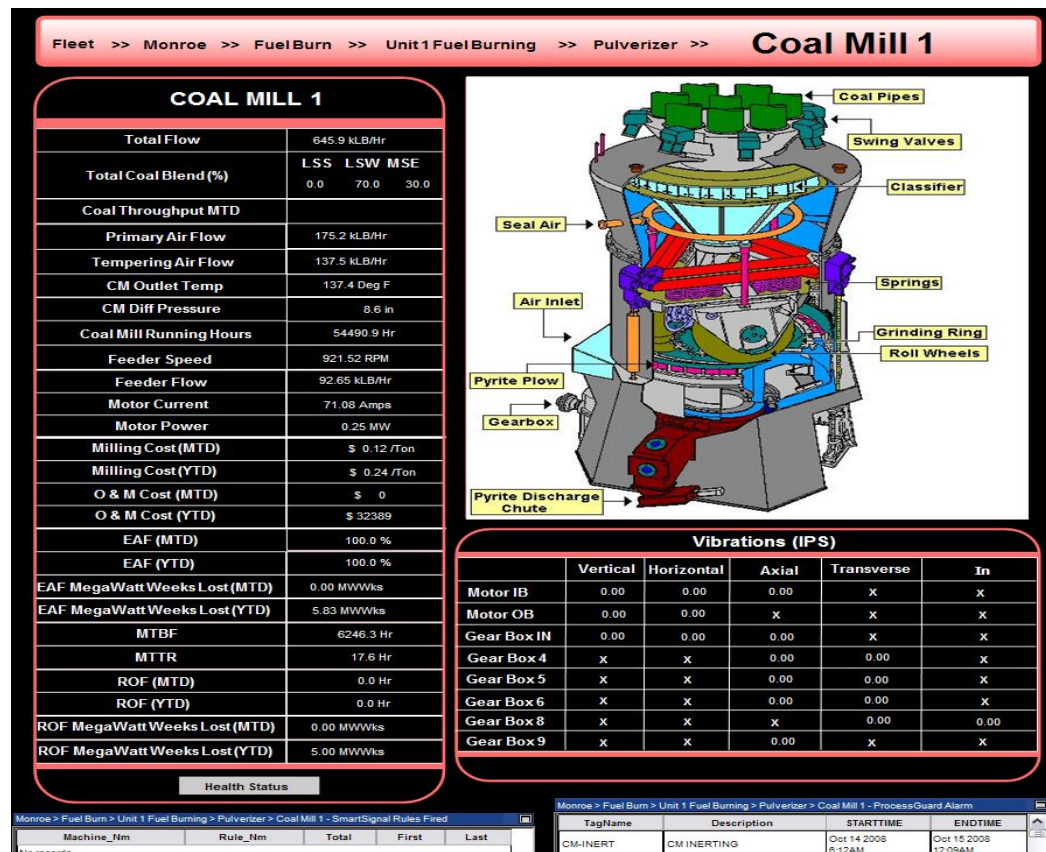
Plant Overview



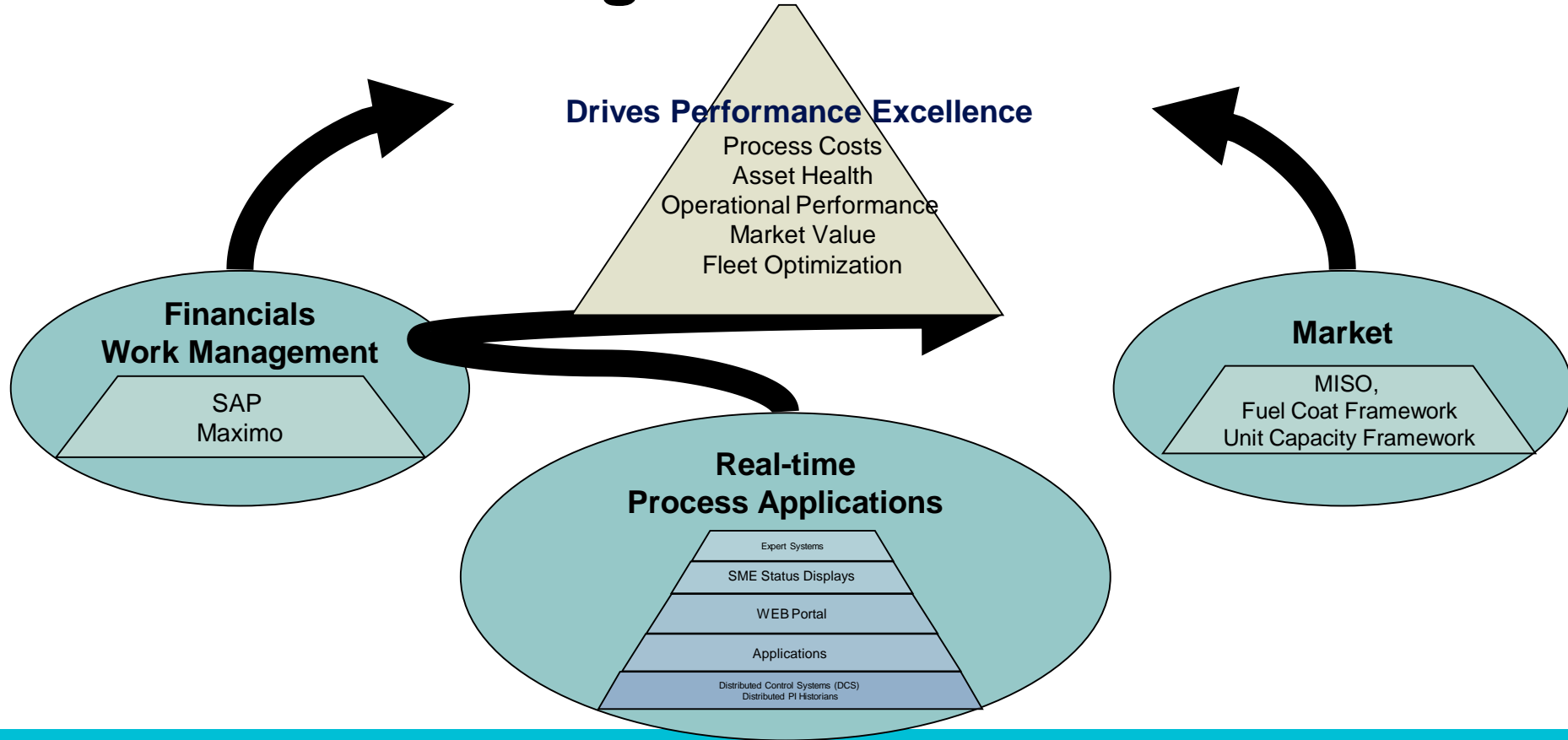
Unit Overview



Coal Mill



Total Fleet Management

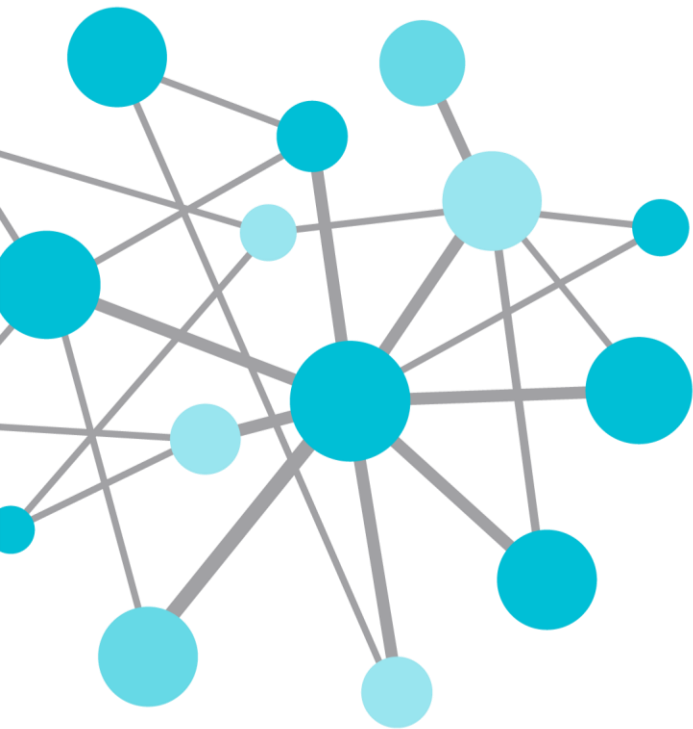


QUESTIONS?



Sumanth K. Makunur

- makunurs@dteenergy.com
- Supervisor
- DTE Energy



THANK
YOU

Brought to you by  **OSI**soft.