

# Bringing Time and Space Together: The PI Integrator for Esri ArcGIS

Dan Lopez, Systems Engineer

18 February 2016





# Integrating with Esri: Powered by the PI System

## Collect

data using  
PI Interfaces

## Manage & Enhance

data within the  
PI Server

## Deliver

data via  
PI Client Tools

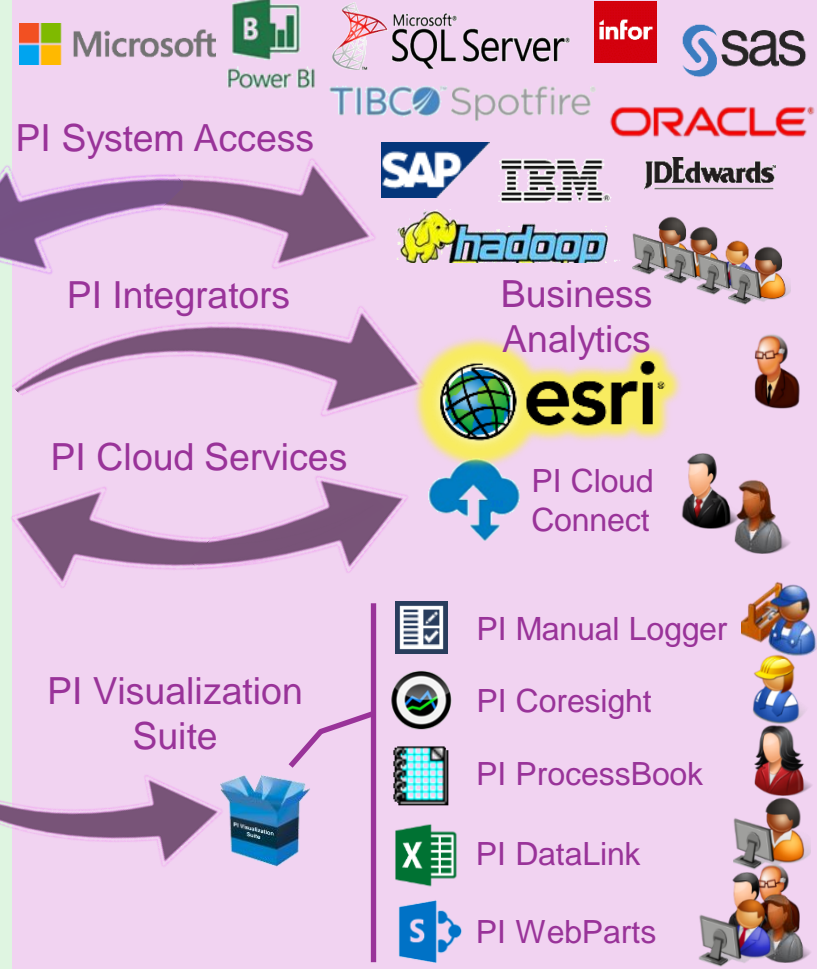
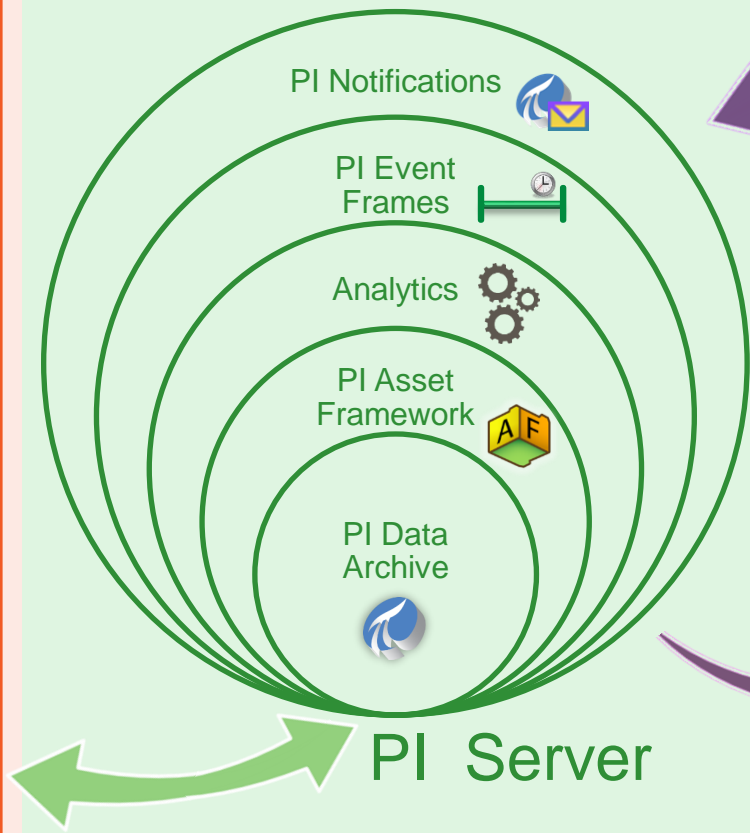


**esri**



osisoft.

REGIONAL SEMINAR



# Visualization Landscape



## PI Coresight

Ad hoc analysis and collaboration



## PI ProcessBook

Display authoring and process monitoring



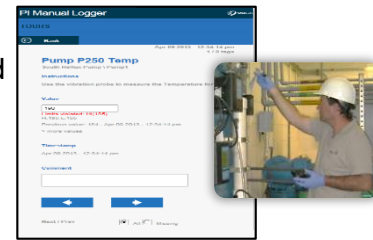
## PI System Access

Business analytics for all the corporation



## PI Manual Logger

Manual entries, fast and secure from anywhere



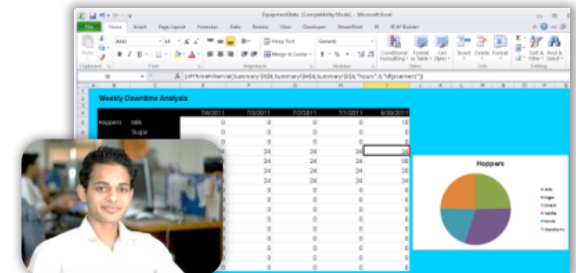
## PI WebParts

Composite apps for Microsoft SharePoint



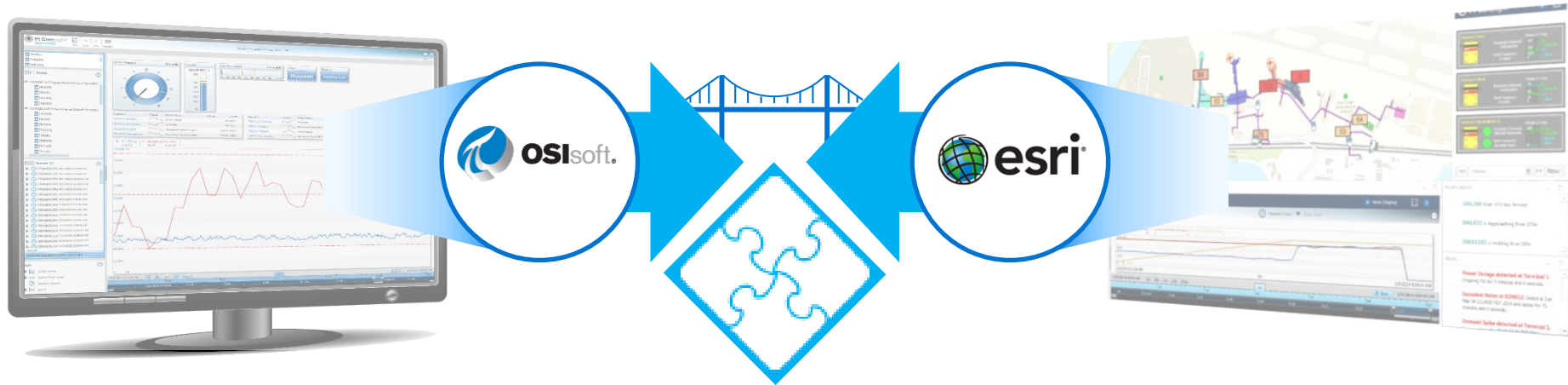
## PI DataLink

Reporting and Analytics in Microsoft Excel



OSIsoft.

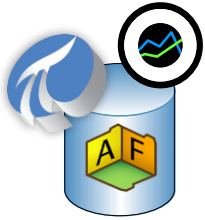
REGIONAL SEMINAR



# PI Integrator for Esri ArcGIS

# What Existed Prior to the Integrator

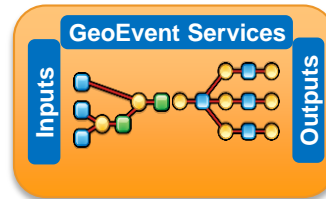
## PI System



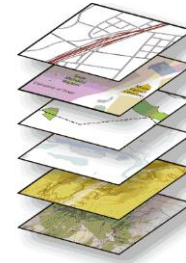
*PI Data Archive 2014*  
*PI Asset Framework*  
**2014**  
*PI Coresight*

*(Real-time data  
infrastructure)*

## Esri GeoEvent Extension 10.2.1



## Esri Feature Services

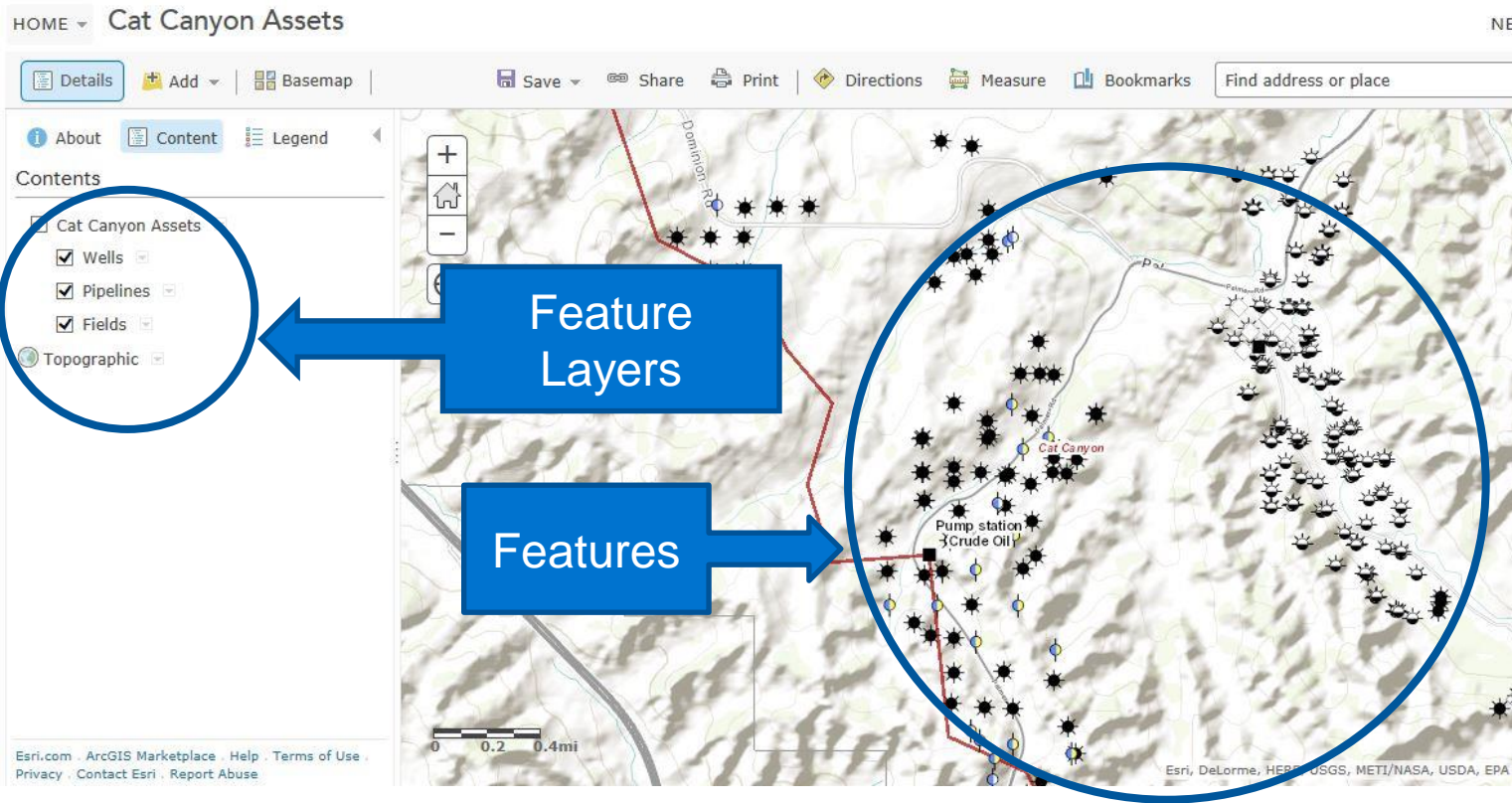


## Esri Client Tools



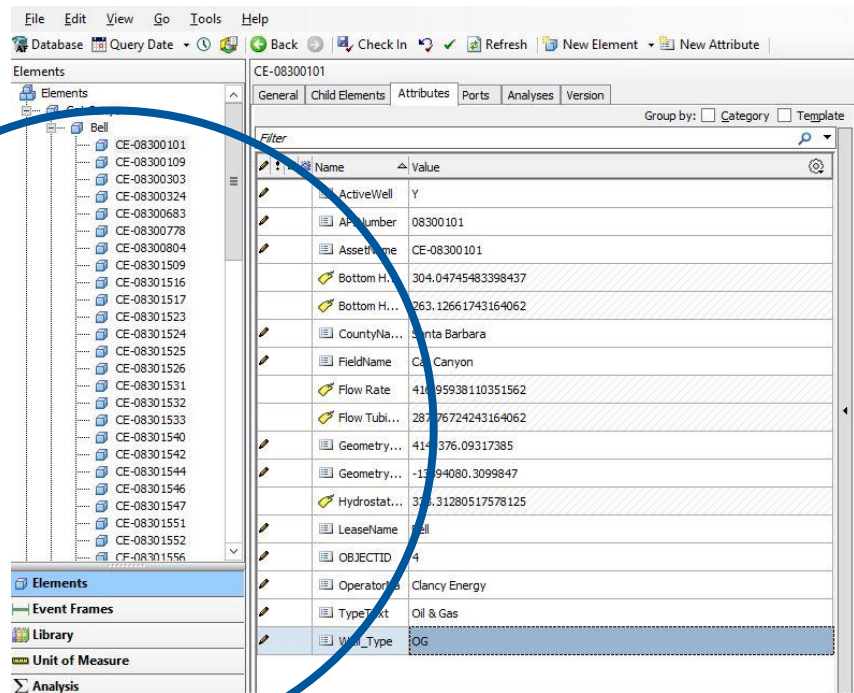
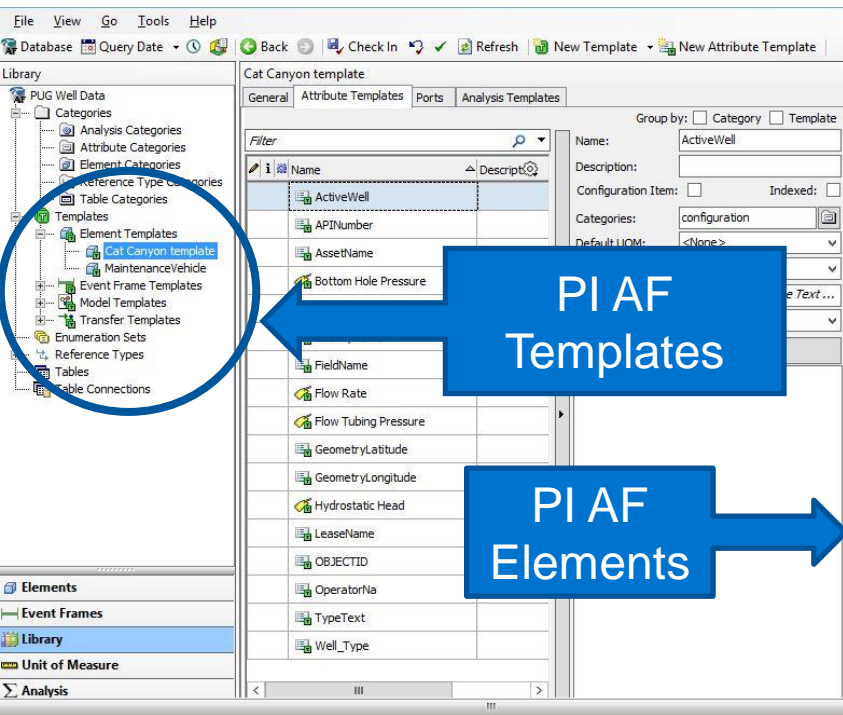


# Key Similarity: Esri *Feature* Layers and *Features* are Comparable...

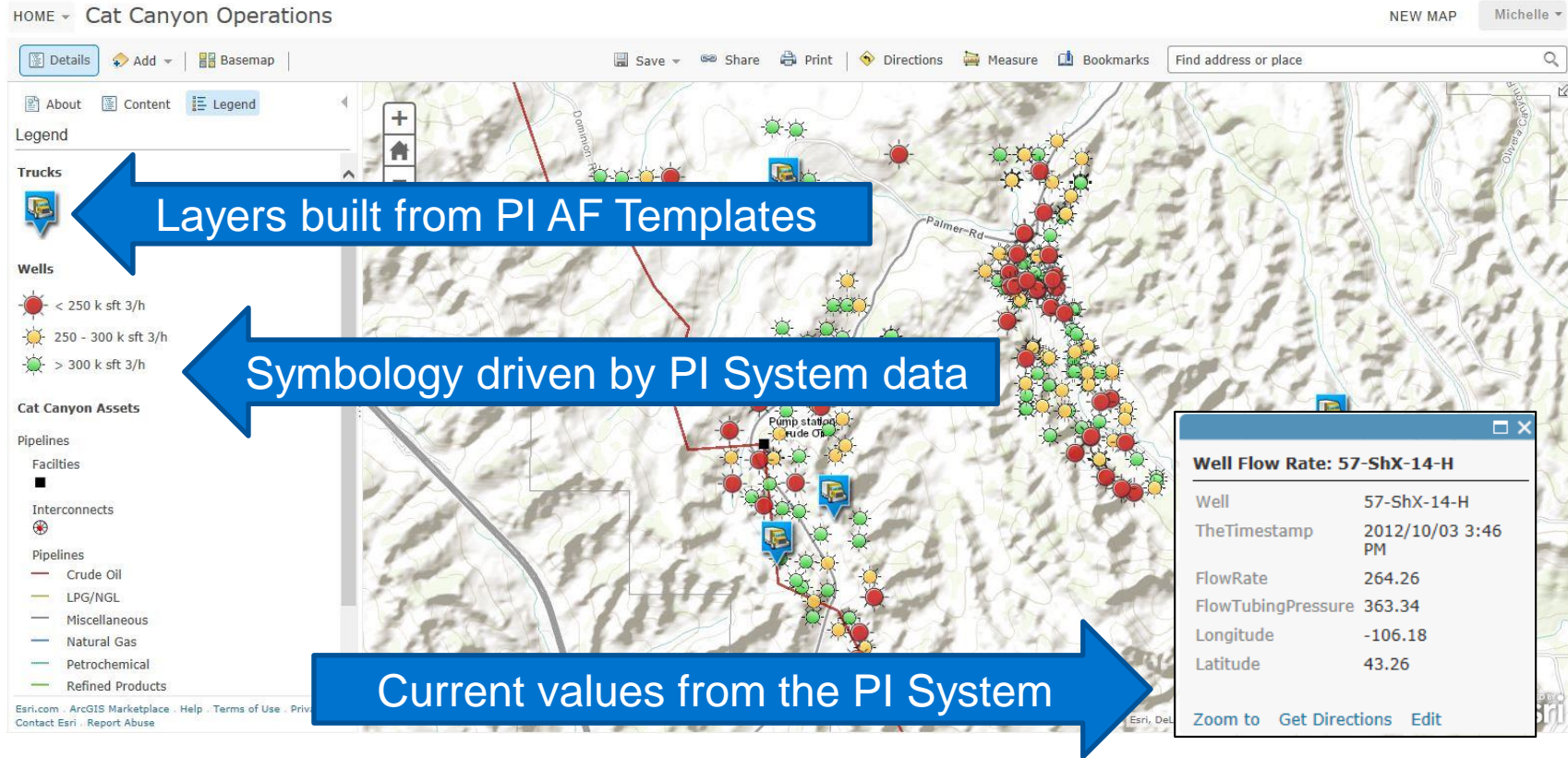




## ...To PI Asset Framework (AF) *Element* Templates and *Elements*

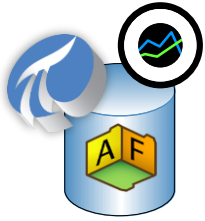


# Leverage Your Existing Expertise



# How Does It Work? Recap: What Existed Prior to the Integrator

## PI System



*PI Data Archive 2014*

*PI Asset Framework*

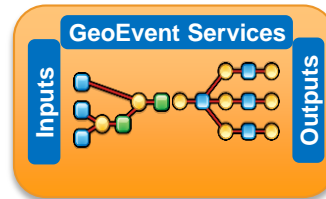
**2014**

*PI Coresight*

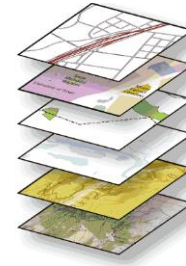
*(Real-time data  
infrastructure)*



## Esri GeoEvent Extension 10.2.1



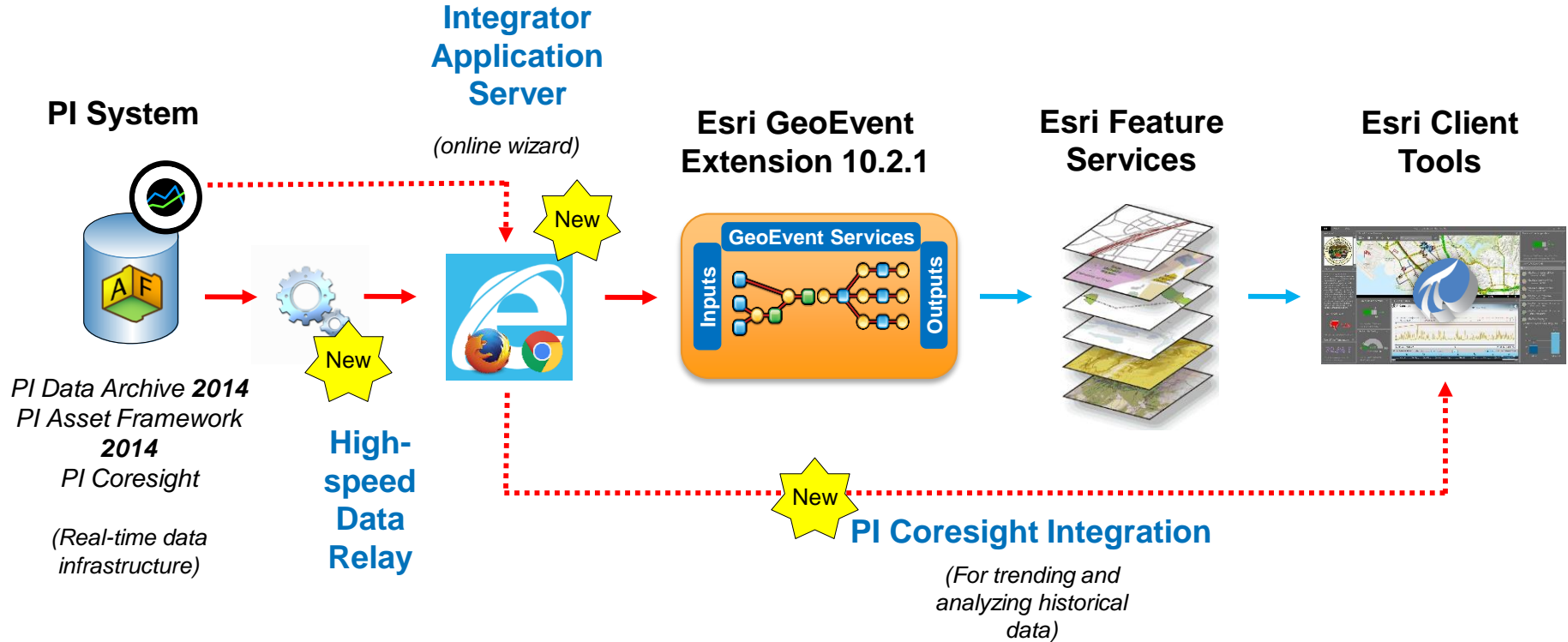
## Esri Feature Services

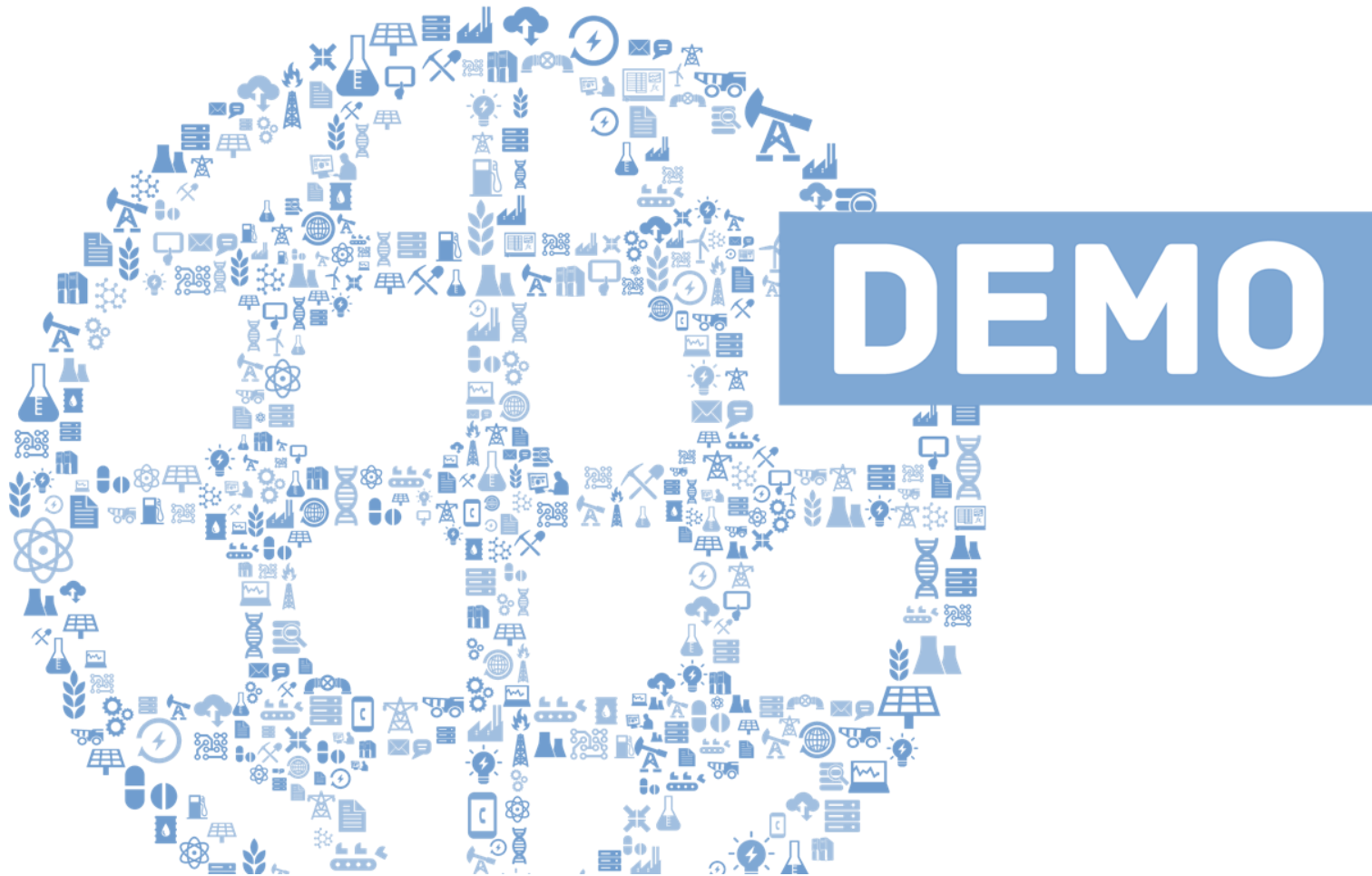


## Esri Client Tools



# Our Solution: the PI Integrator for Esri ArcGIS









# Use Cases



OSIsoft.

REGIONAL SEMINAR

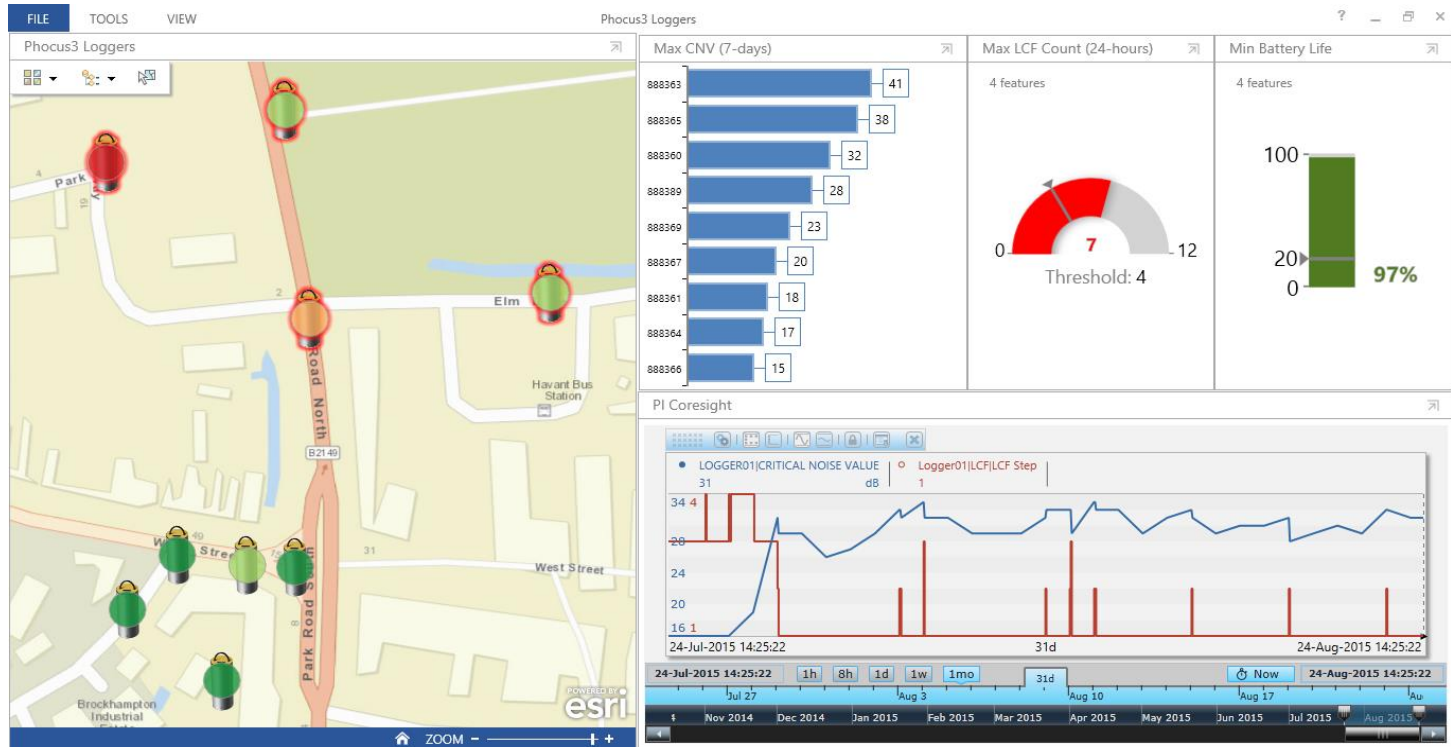
© Copyright 2016 OSIsoft, LLC

15



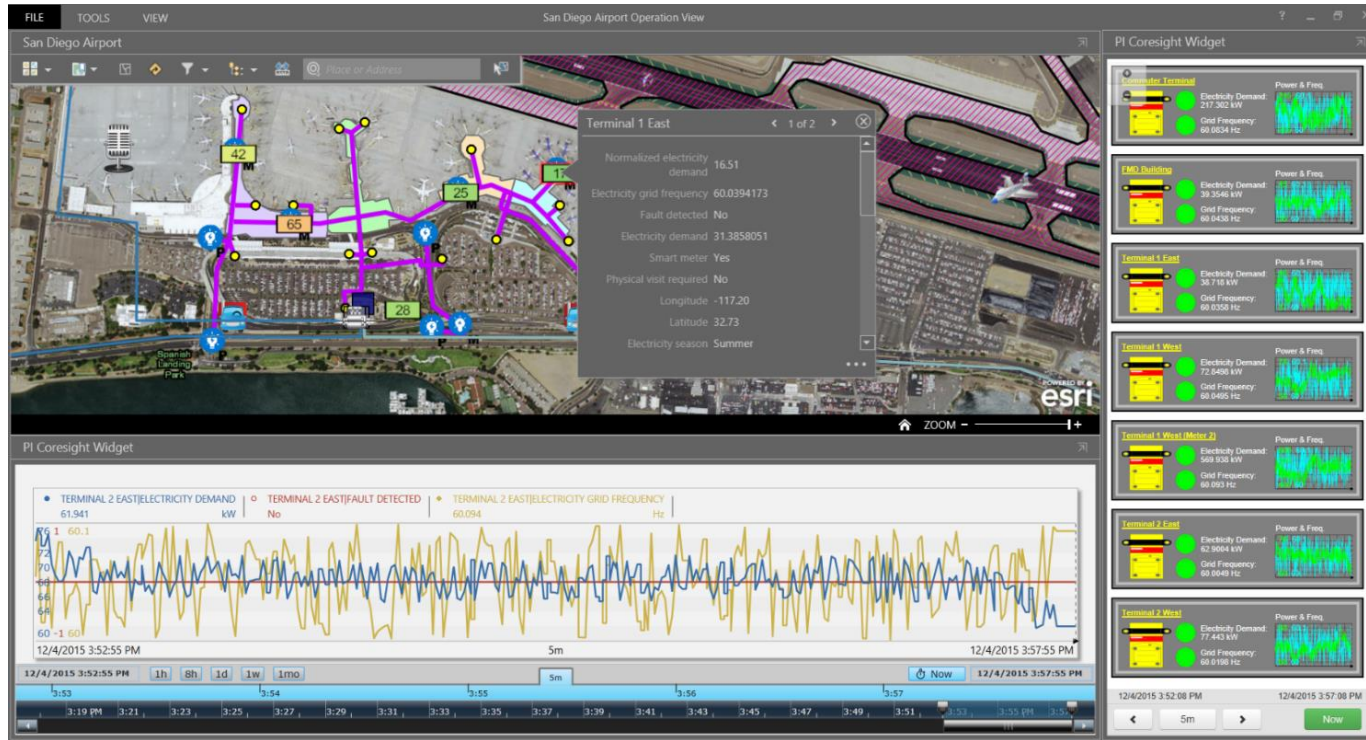
# Water Leak Detection Using Acoustic Noise Loggers

Leverage the ability to stream *any* PI System data into ArcGIS



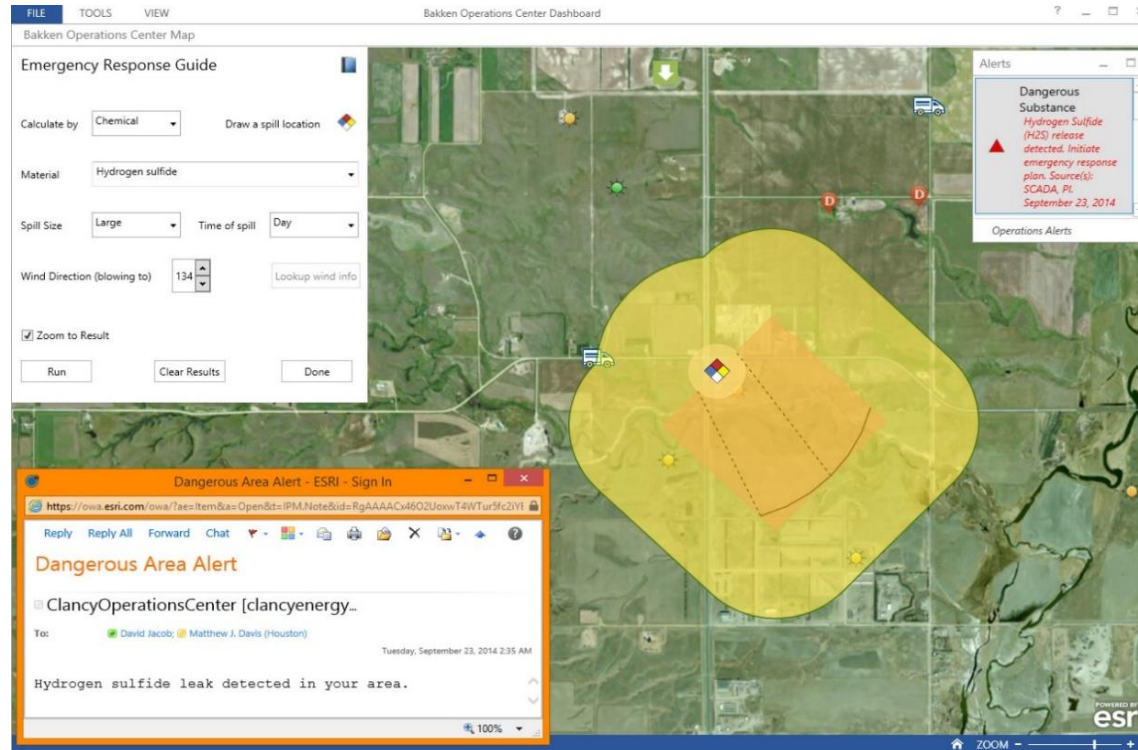
# Enhancing Situational Awareness

Overlay live data layers on top of traditional GIS layers



# Improving Health, Safety, and the Environment

Enhance disaster response plans and resiliency



OSIsoft.

REGIONAL SEMINAR

# Harnessing the Internet of Things

## Arduino Yun (32g)

- Linux OS
- WiFi
- Analog Input
- mSD storage



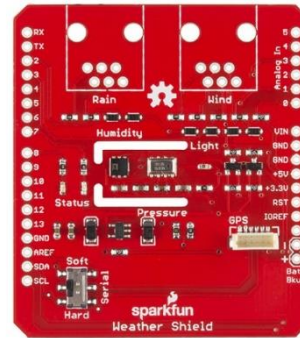
## Energy Shield (52g)

- Rechargeable battery
- 1200 mAh capacity
- Arduino compatible



## Weather Shield (20g)

- Temperature
- Humidity
- Light Level
- Barometric Pressure
- GPS signal



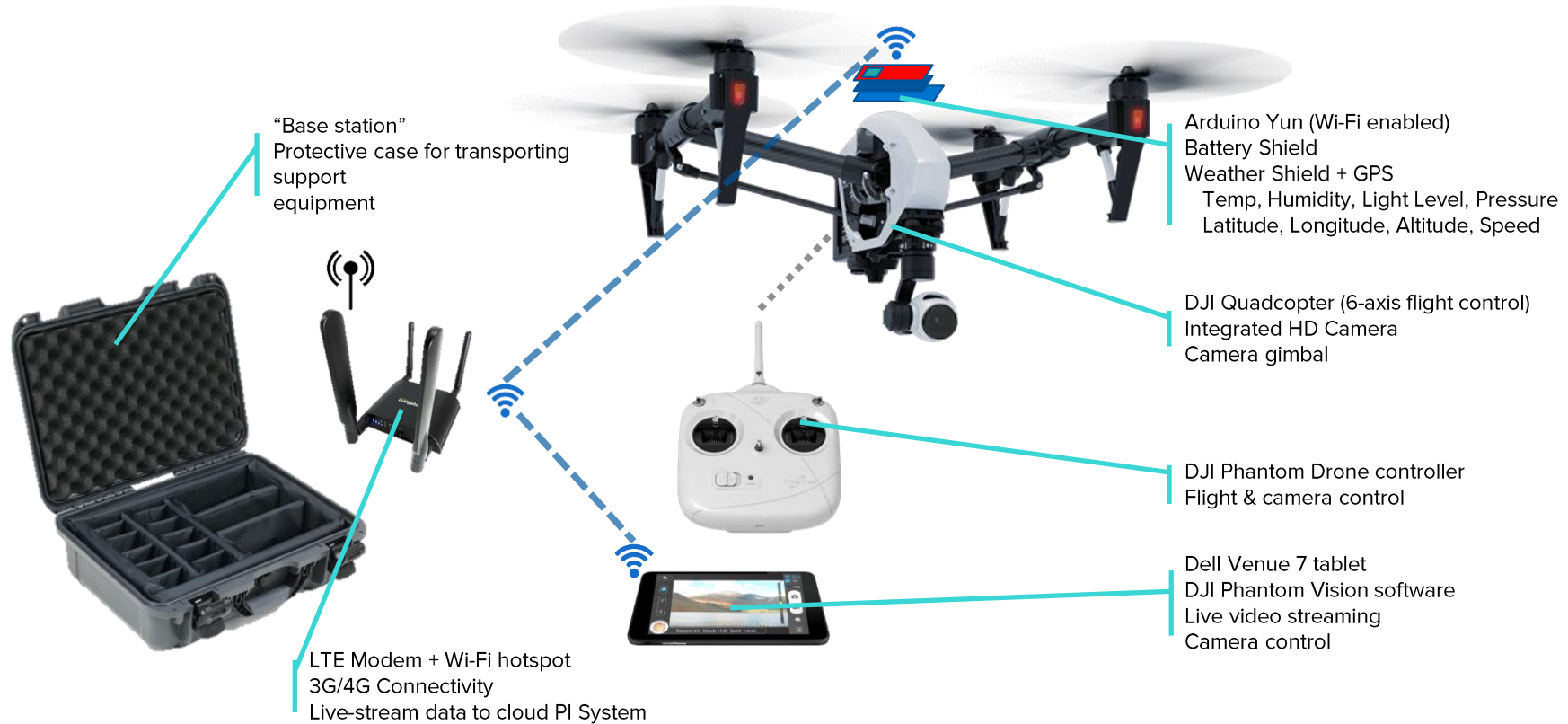
## GPS Receiver (<10g)

- 50 channel
- Latitude
- Longitude
- Altitude
- Speed
- Accurate clock



**Total Weight (incl. case and wires): ~130g**

# Leveraging Emerging Technologies





# PI Integrator for Esri ArcGIS Roadmap



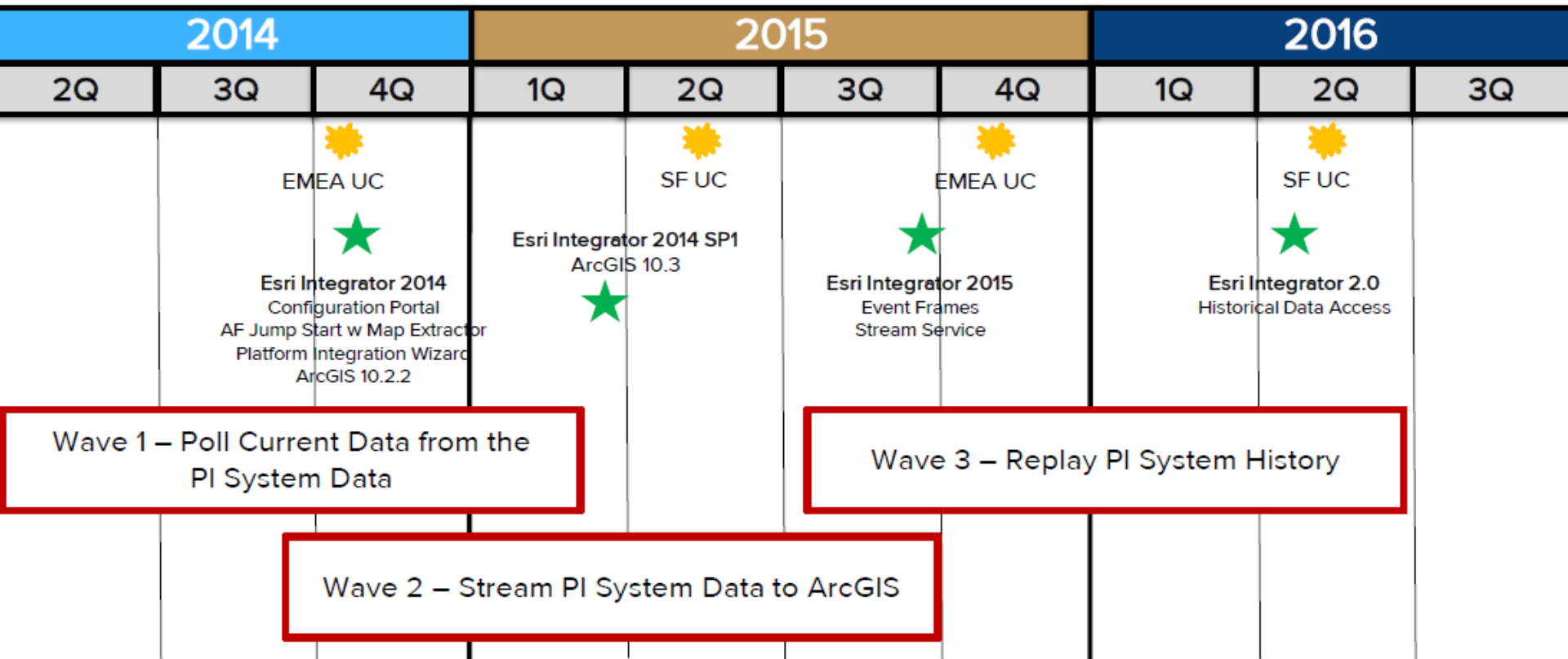
OSIsoft.

REGIONAL SEMINAR

© Copyright 2016 OSIsoft, LLC

21

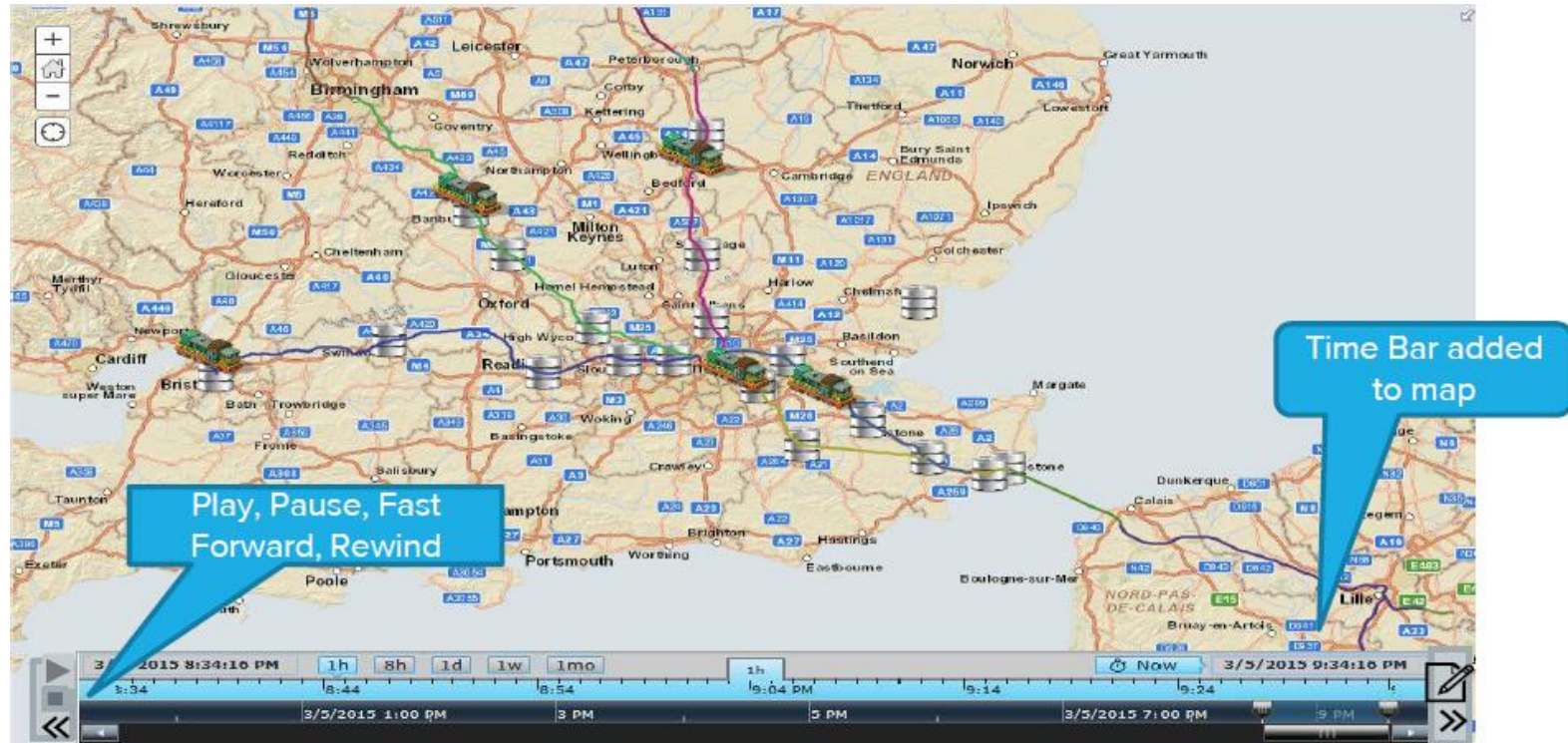
# PI Integrator for Esri ArcGIS Roadmap





# Future Capabilities: Replaying History

Maps could be “rewinded” to show the recent events and history



# Dan Lopez

[dlopez@osisoft.com](mailto:dlopez@osisoft.com)

Systems Engineer

OSIsoft, LLC



# Questions?

**Please wait for the  
microphone** before  
asking your question



**Please state your name  
and your company**



감사합니다

谢谢

Danke

Merci

Gracias

**Thank You**

ありがとう

Спасибо

Obrigado

