

The background of the entire image is a blue-tinted photograph of the San Francisco skyline, featuring the Golden Gate Bridge on the left and the Transamerica Pyramid on the right. The OSIsoft logo is centered at the top in white.

OSIsoft®

USERS CONFERENCE 2016

April 4-8, 2016 | San Francisco

TRANSFORM
YOURWORLD


PI System Roadmap

Sander Kim

Director, Product Management & Product Marketing

April 5th, 2016





Unleash Your Infrastructure
with the **PI System**



Enhance Your Intelligence with **PI Advanced Integrations**



Enable Your World with
OSIsoft Cloud Services



Advance Your Ecosystem
with **OSIsoft Marketplace**



Accelerate Your Transformation
with **OSIsoft Advanced Services**

1

● Data Ingress /
Connectivity



Data ingress trends

More sources & importance of metadata

Patterns of ingress

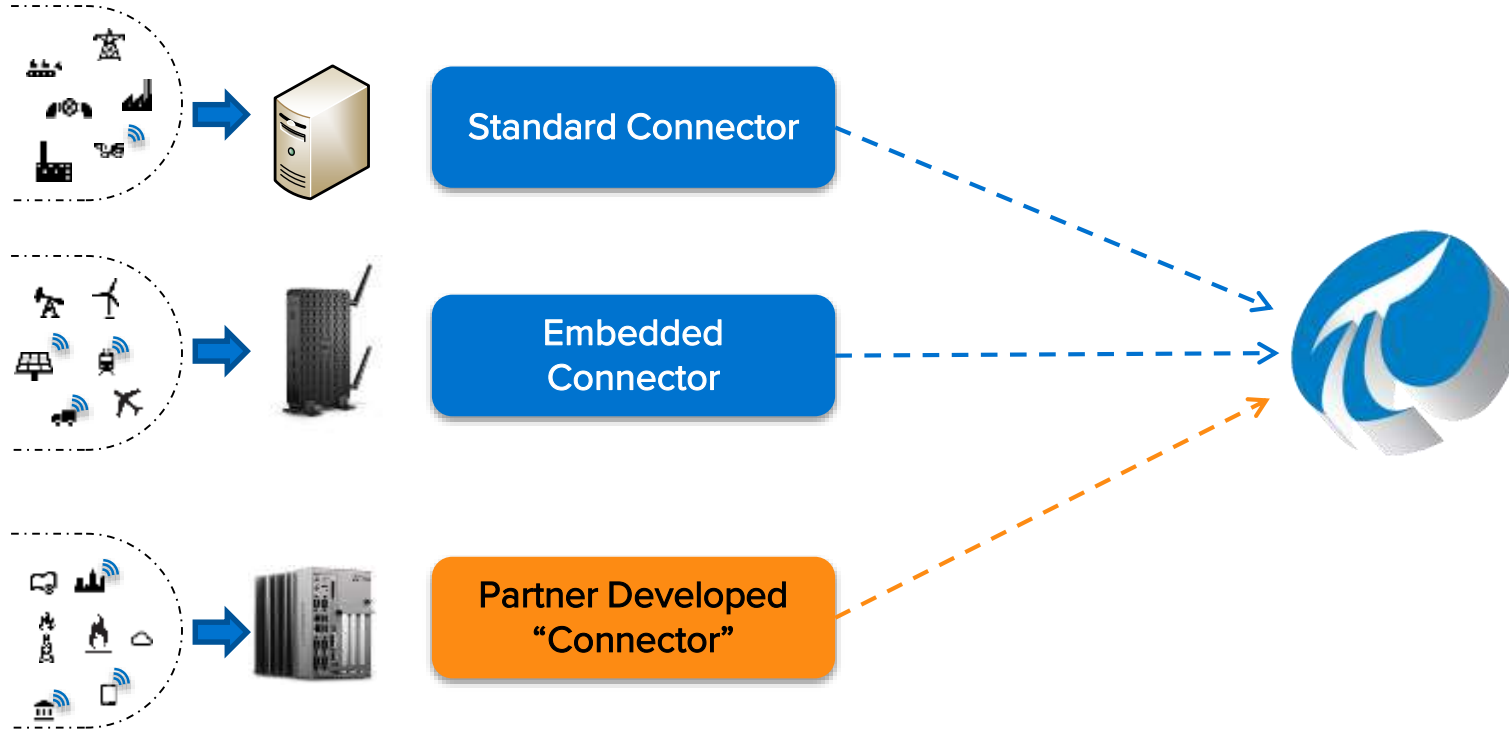
Geographically distributed

Diverse protocols & pervasive sensing



Ensuring **no matter where** your critical **operations** data exists the PI System is **the** critical **infrastructure**

Data ingress patterns are evolving



What problems are we focusing our attention on...

Time



Spend a lot of
time configuring
tags

Configuration



Challenging to
configure
interface

Build



Time consuming
to build an asset
model

Embedded



Run on
embedded
devices / Linux

Secure



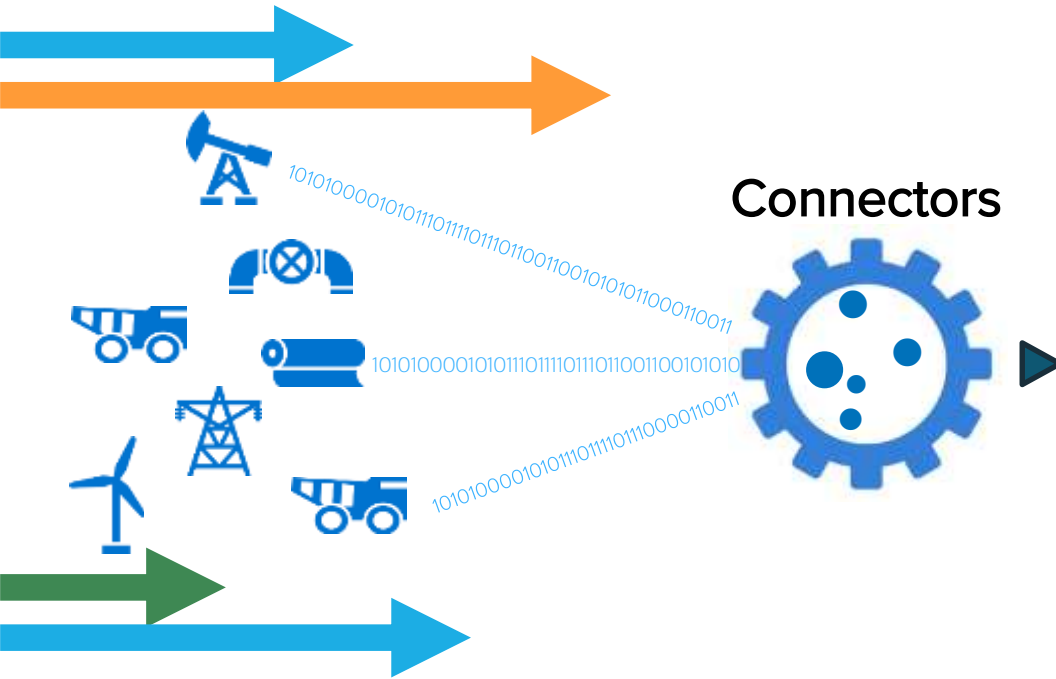
Security

Speed



Collect high
speed data

Strategic focus: PI Connectors



- Easy to **configure**
- Creates **reference model** based on **assets** as defined by the data source
- **Auto-creates:**
 - Elements in PI Asset Framework (AF)
 - Points in PI Data Archive, linked to PI AF Elements
 - Events collected and stored in Event Frames
- **Updates** automatically with data source changes
- **Collects** real-time data

PI Connectors released in 2015+

HART-IP Wireless Sensors	Wonderware Historian All markets	IEC 60870-5-104 T&D substations	DC Systems RTscada T&D	BACnet Facilities
Siemens Simatic PCS7 All markets	UFL All markets Partners, EAs	PI System Health All markets	Ping All markets	NOV WITSML Oil & Gas

PI Connectors in development

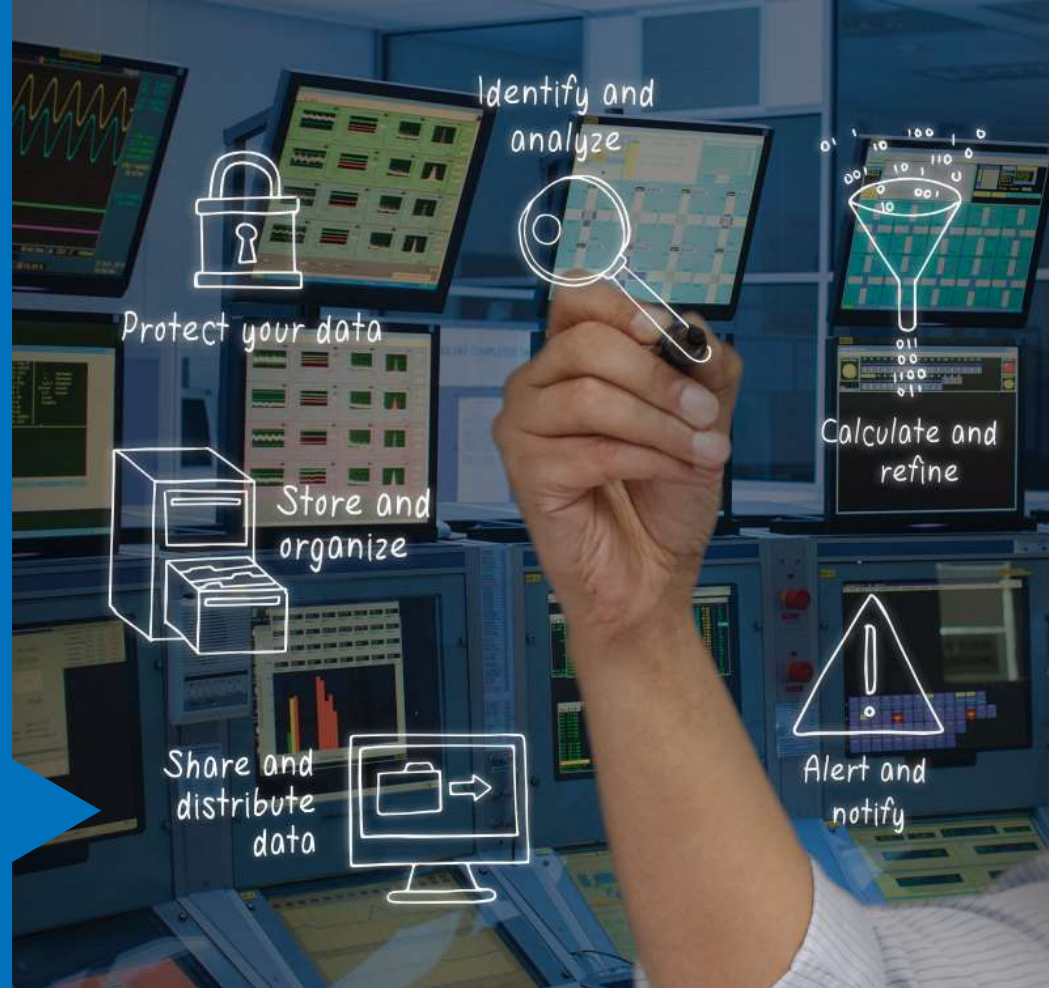


PI Connector	Market	Status
OPC UA	All	Beta April
PI System	All	Beta Q2
DNP3 for embedded systems	T&D	Development
Redfish	Datacenter	Development
Modbus for embedded systems	All	Development
Schneider Electric ClearSCADA	Water	Research

- ◆ See also: “Getting Started with IIoT and the PI System” Felts and Noonan, Thursday 3:00pm, Continental 6



PI Server



PI Server: Redesigning next gen PI Notifications



Users want to be notified when key event occurs

- Limit exceedance
- Preventive or condition based maintenance

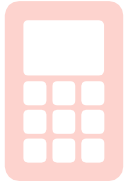


Notifications tailored for a person(s) or another system



Notifications

- Scalability
- Usability
- Leverage Analytics and Event Frames
- Coresight Event History



PI Server: The growth of asset analytics



- Use data with future time stamps in calculations
- Flexible output time stamps
 - Able to generate forecasts
- Manual recalculation for event frames
- Client side PE
- New PE functions
- Improved management
- Performance improvement

- Features to support PI Notifications 2016
 - Focus on event frames generation
 - PE functions
 - SQC triggered event frames
- Failover
- Improved troubleshooting and management

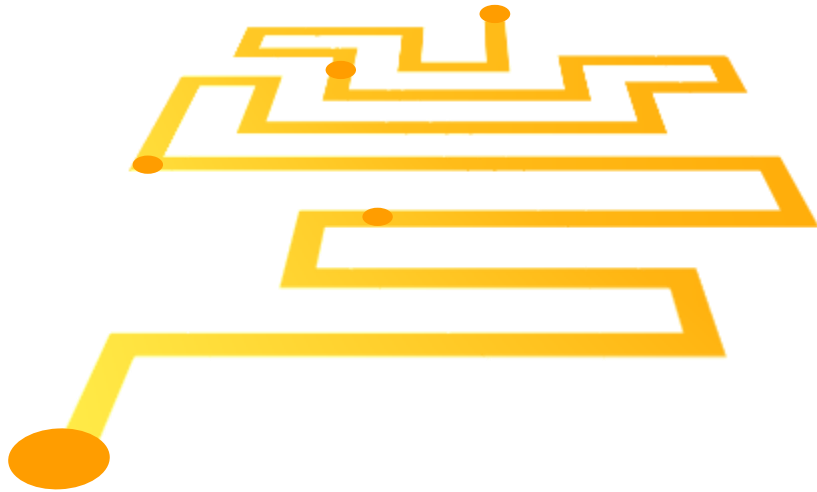
Researching: System administration

The Challenge

- Geo-distributed systems
- Multiple servers
- Thousands of users
- Require 24/7 365 uptime
- Multiple administrative tools
- Multiple versions
- Multiple Operating Systems
- Security



Areas of focus: System Administration



Single PI Server installer

Single unified system administration tool

Prioritized health indicators

Auto correct faults when possible

PI System dashboard



Visualization



What we hear about visualization...

“People want their data **where they are**, not where the system is”

“I have a tough time selling ProcessBook internally because it's **powerful** but to the end users **it looks heavy and old** and other tools have **5% of the functionality but look better and work over the web** and they win.”

“... that ability for an **end user** to be able to go in and configure it and get an **integrated experience** has **not been there**”

Visualization: a critical piece of the Infrastructure

Today



PI ProcessBook

Display Editor
Process Monitoring



PI Coresight

Ad Hoc Analysis
PB Display Viewer



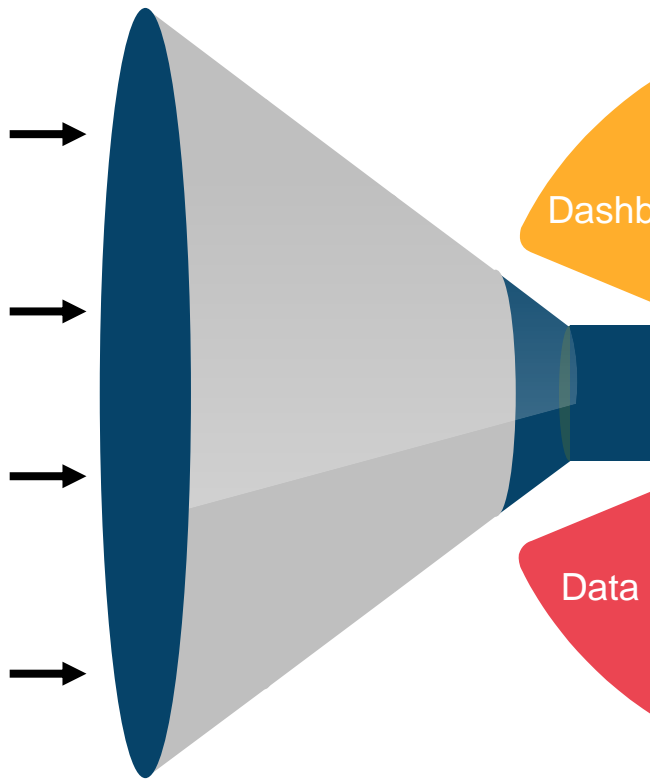
PI WebParts

Dashboards

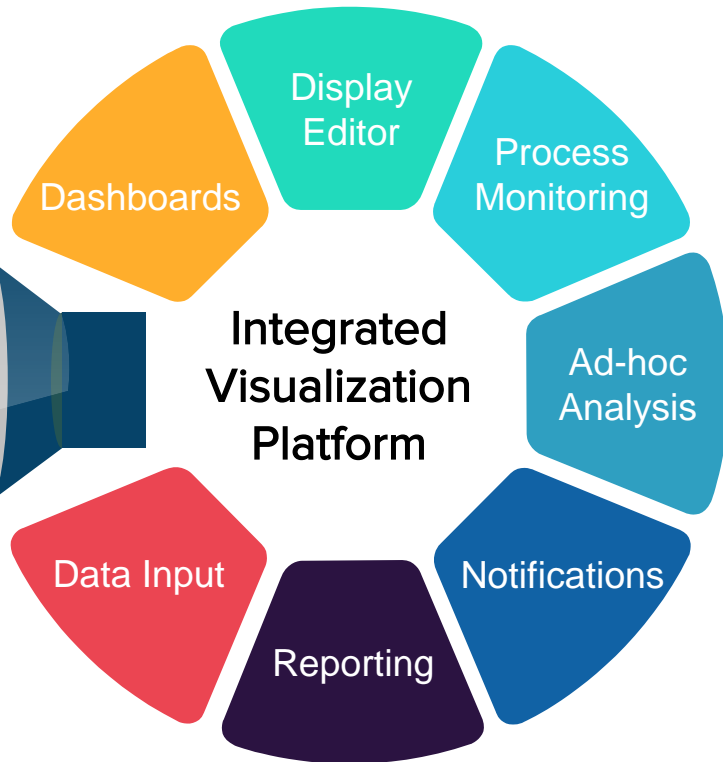


PI Manual Logger

Manual Data Entry



Tomorrow



Integrated visualization user scenarios

Mash-up applications to show operational data with other business or transactional data

- Maintenance personnel see current operating conditions along with a work order

Self service situational awareness

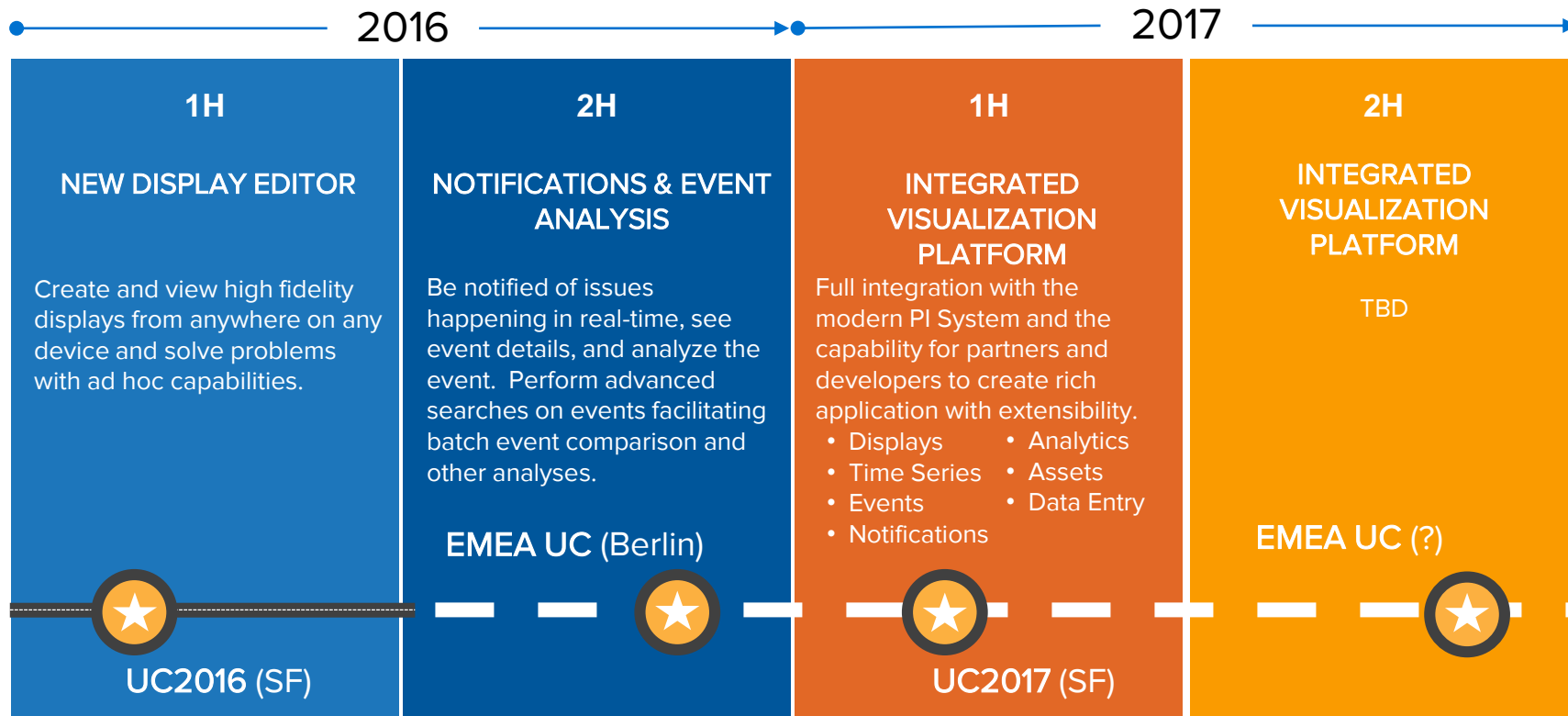
- Process personnel self subscribe to events happening in the operation and are notified when a situation occurs and have real-time access to current conditions.

Dashboards with rich drill in detail

- Executives see plant or organizational level roll-ups and with a single click drill in to see current operating conditions



PI Coresight roadmap



PI Coresight 2016: PI Coresight like never before

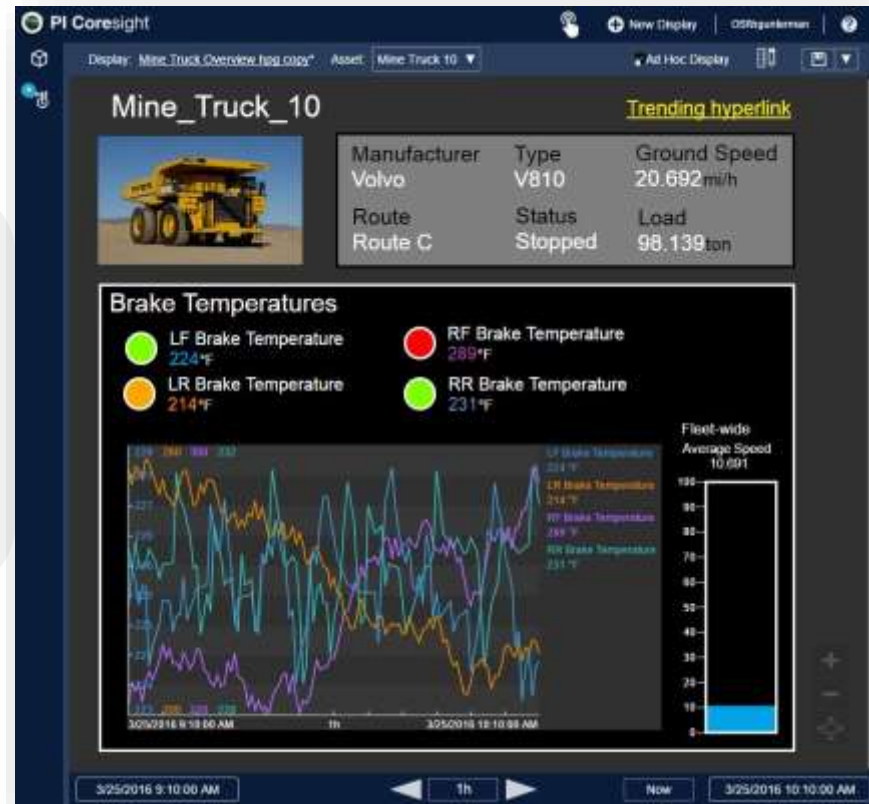
PI Coresight 2016 puts power and flexibility into the hands of users.

New!

- All new **reimagined** HTML5 editor with **new UI!**
- Absolute size and position control
- Add **custom pictures**
- Create **multi-state** symbols
- Compare events with **overlay trends**

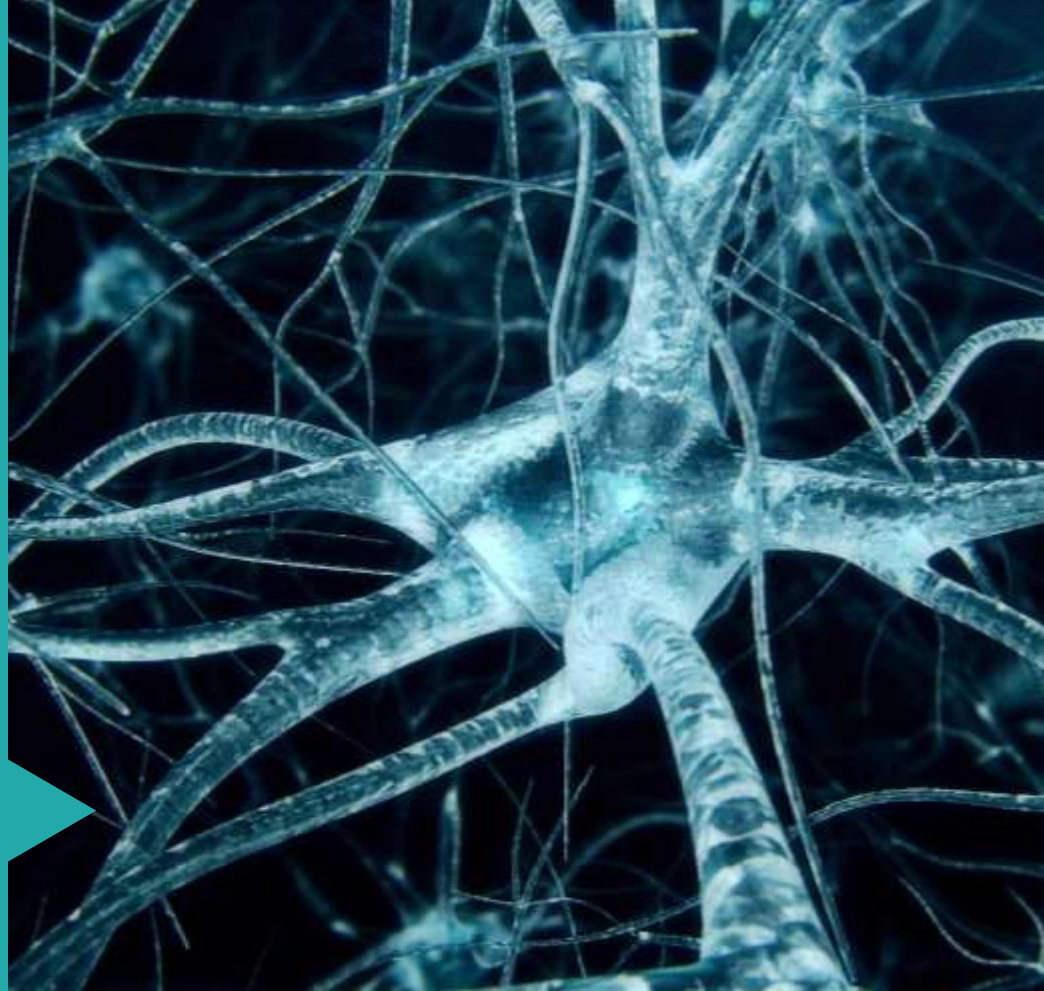
plus richer context with PI Server 2016

Learn more at the Day 3 presentation



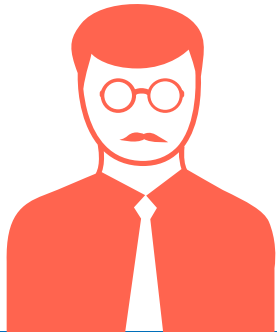
4

Advanced Integrations



What we hear you need

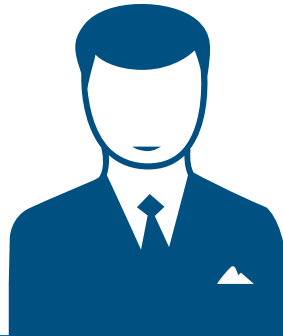
"We're looking to get the data into tools like Spotfire"



"Writing code and supporting it is just not an option."



"It's great that I can look at data across similar and different assets together."



Familiar tools
Scale without code
Flexibility and trust

Problem complexity drives the need for Integrators

Disparate assets or interacting one-by-one

Interacting with common assets as a fleet

Complexity ↑

Monitoring

Real-time visibility



- HMI

Process Optimization

Real-time & historical view across any plant asset



- PI ProcessBook
- PI Coresight
- PI Datalink

Benchmarking

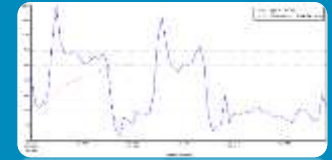
Fleet-wide performance comparison



- BI App (i.e. Tableau, Spotfire, Lumira)
- PI Integrator for Business Analytics
- PI Integrator for SAP HANA

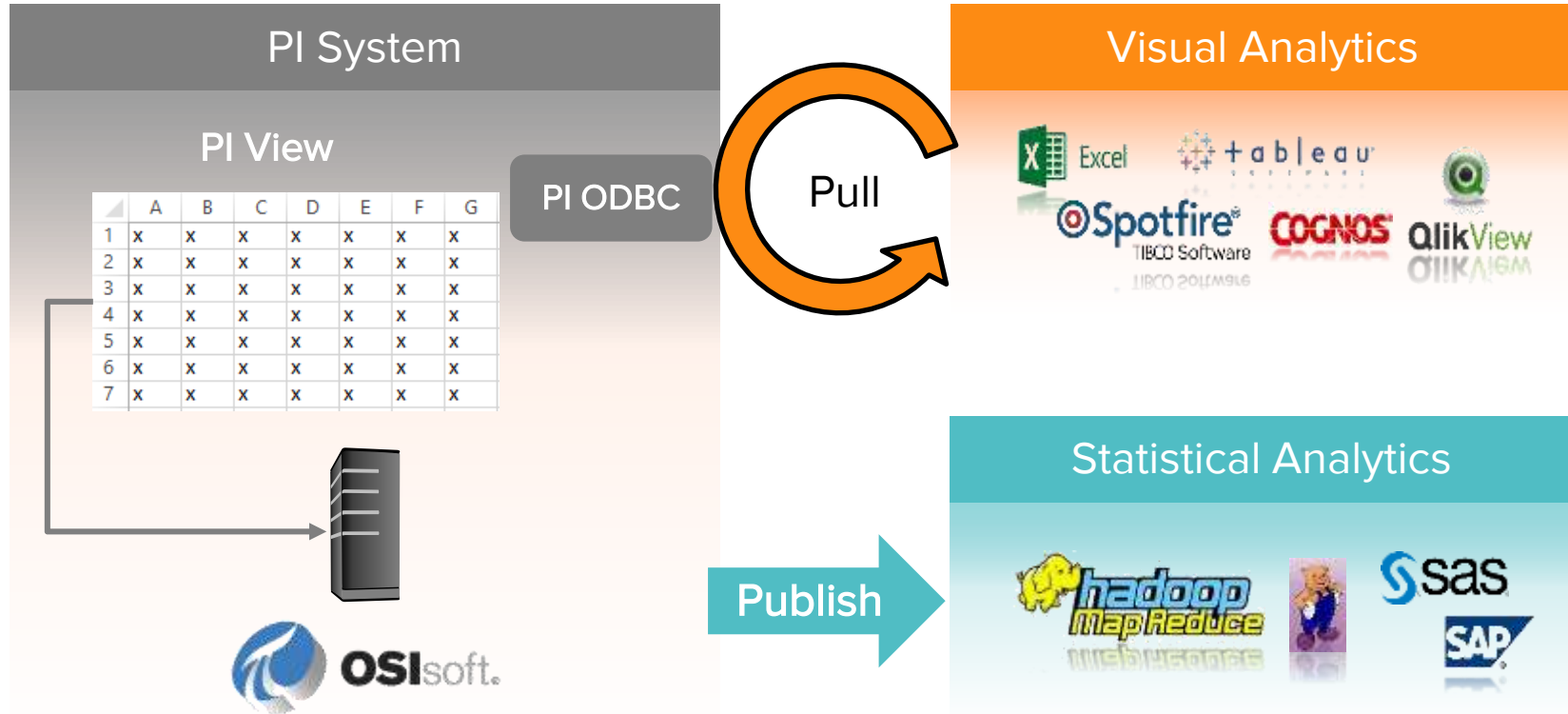
System Optimization

Large scale multi-variate analysis



- Machine Learning (Azure ML, R)
- PI Integrator for Business Analytics
- PI Integrator for SAP HANA

Released: PI Integrator for BA / SAP Hana



PI Integrator 2015/2016 Strategic Plan

Business Intelligence & Data Warehouses

Available Today

Scalable BI for the PI System

Initial Release

- Fleet Asset Reporting
- Reduce Reporting Time
- Integrate with Data Warehouse

Planned

Expanded Systems and Events

UC SF Release

- Oracle
- Hadoop (HIVE & HDFS)
- Event Frames

Planned

Scale

High Availability

Backfill and OOO data

2015

1H2016

2H2016

Streaming Systems

Research

Streaming Pattern

Market Problems

- External Computing and Event Platforms
- App Specific Data Shapes (JSON/XML)

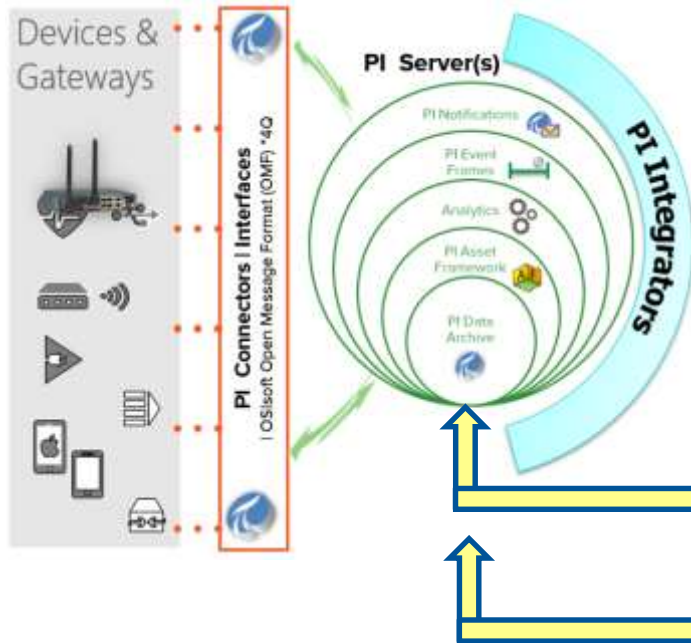
Planned

Stream Systems

Initial Release

- Azure Event & IoT Hub
- Kafka
- Custom Data Output

PI Integrator for SAP HANA



Data Access Pattern	Product / Feature Roadmap	Databases and Applications
Query Data (API)	Planned 2017	<div>SAP HANA Platform Edition</div> <div>SAP HANA Cloud Platform</div>
Pull Data (Federated)	SAP IoT Connector (Smart Data Access)	
Publish Data (Push)	PI Integrator for SAP HANA 2015R2	
Stream Data (Stream Events)	PI Integrator for SAP HANA 2016	
Receive Data (Predictions)	PI Integrator for SAP HANA 2016	<div>Lumira</div> <div>Vora</div> <div>S4</div> <div>Etc.</div>
Receive Metadata (Assets / PM)	Planned 2017	

Full platform coverage for all data integration scenarios

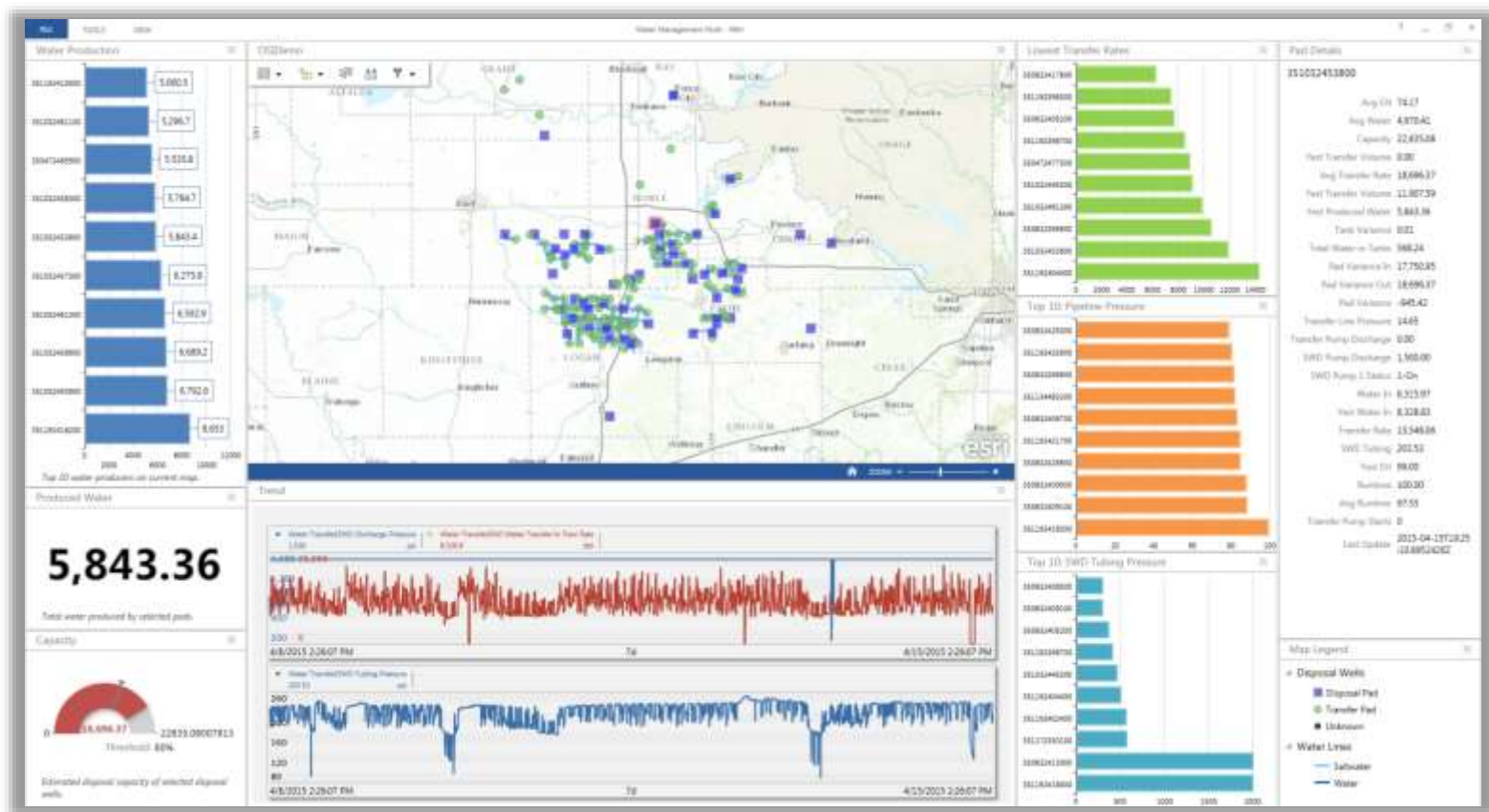
PI Integrator for Esri ArcGIS

Overlay assets and real-time information onto Esri maps



- Overview of your PI System assets using Esri maps
- Esri maps become live with PI System data
- Drill into asset data using PI Coresight
- Import Esri ArcGIS assets into PI AF
- Native Operations Dashboards Widgets

Devon Energy: Oil field water management



What's next for the PI Integrator for Esri ArcGIS

Manageability

- Enhanced publication identification for troubleshooting
- ArcGIS environment clean up when Integrator objects are deleted

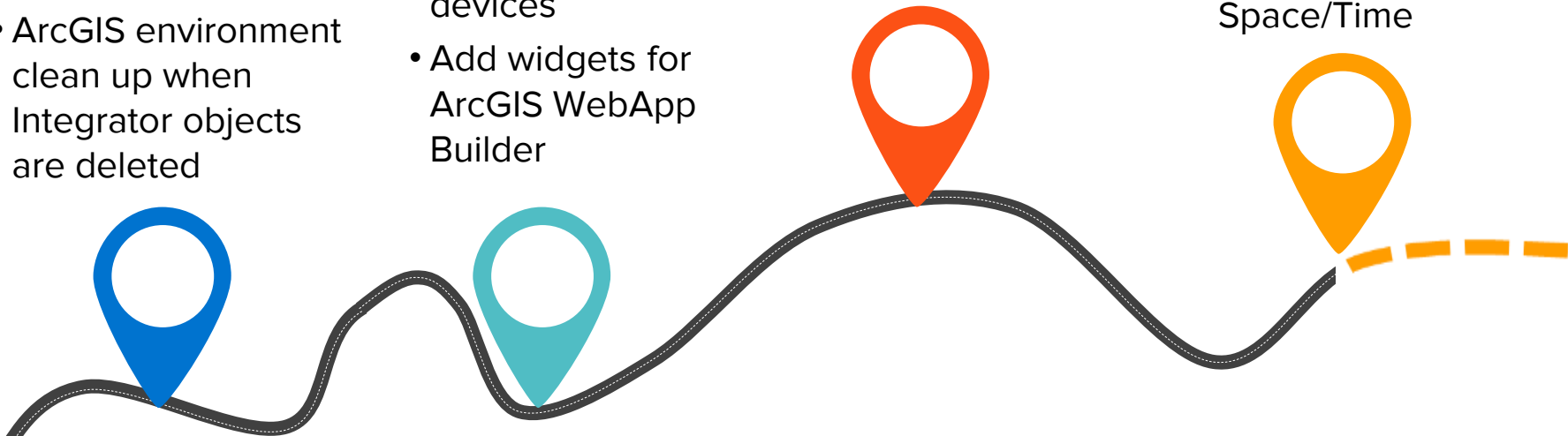
More Widgets

- Support mobile devices
- Add widgets for ArcGIS WebApp Builder

Event Frames in ArcGIS

RESEARCH:

Rewindable Maps
Asset Synch with
ArcGIS Database
Space/Time

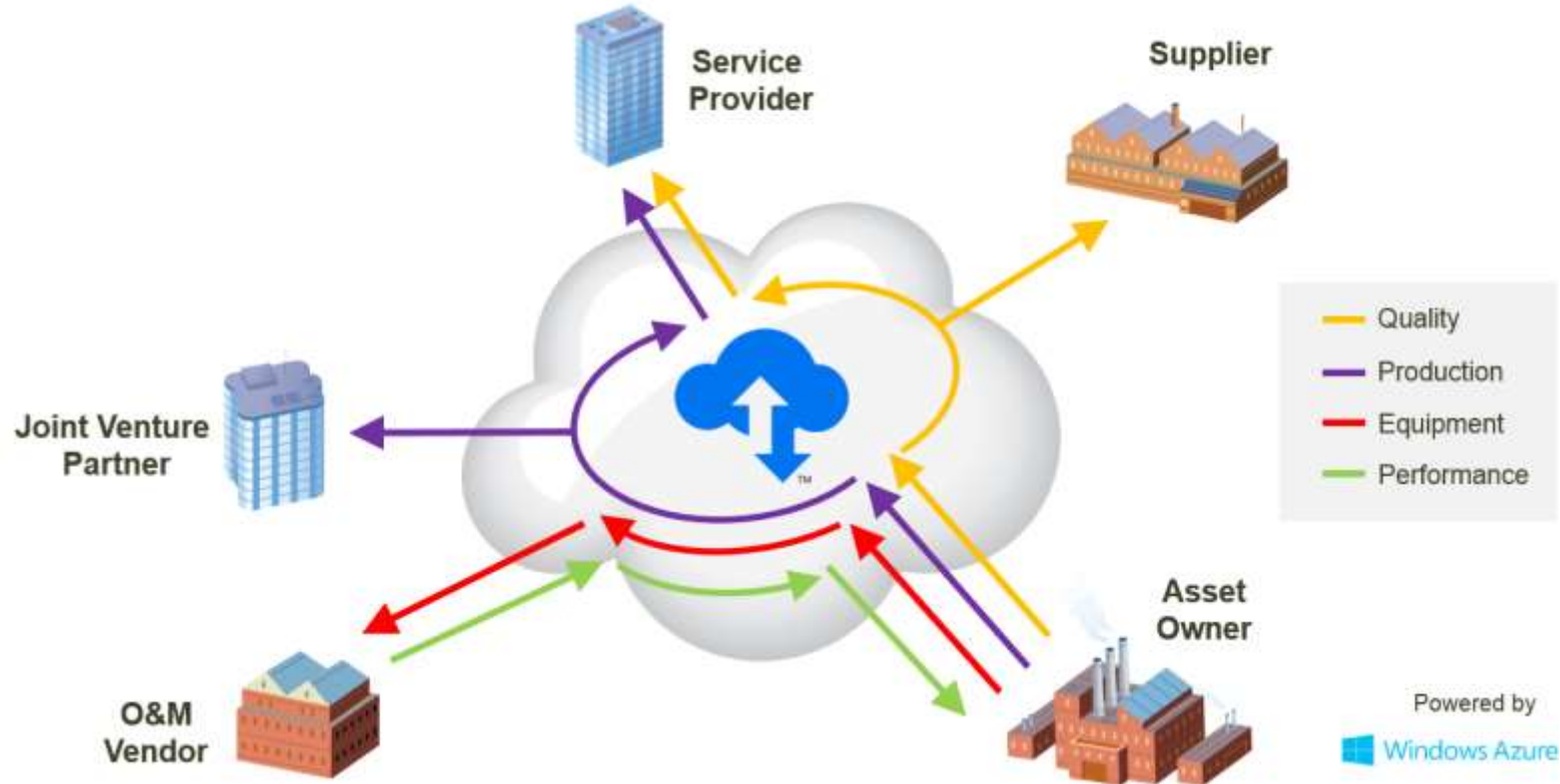




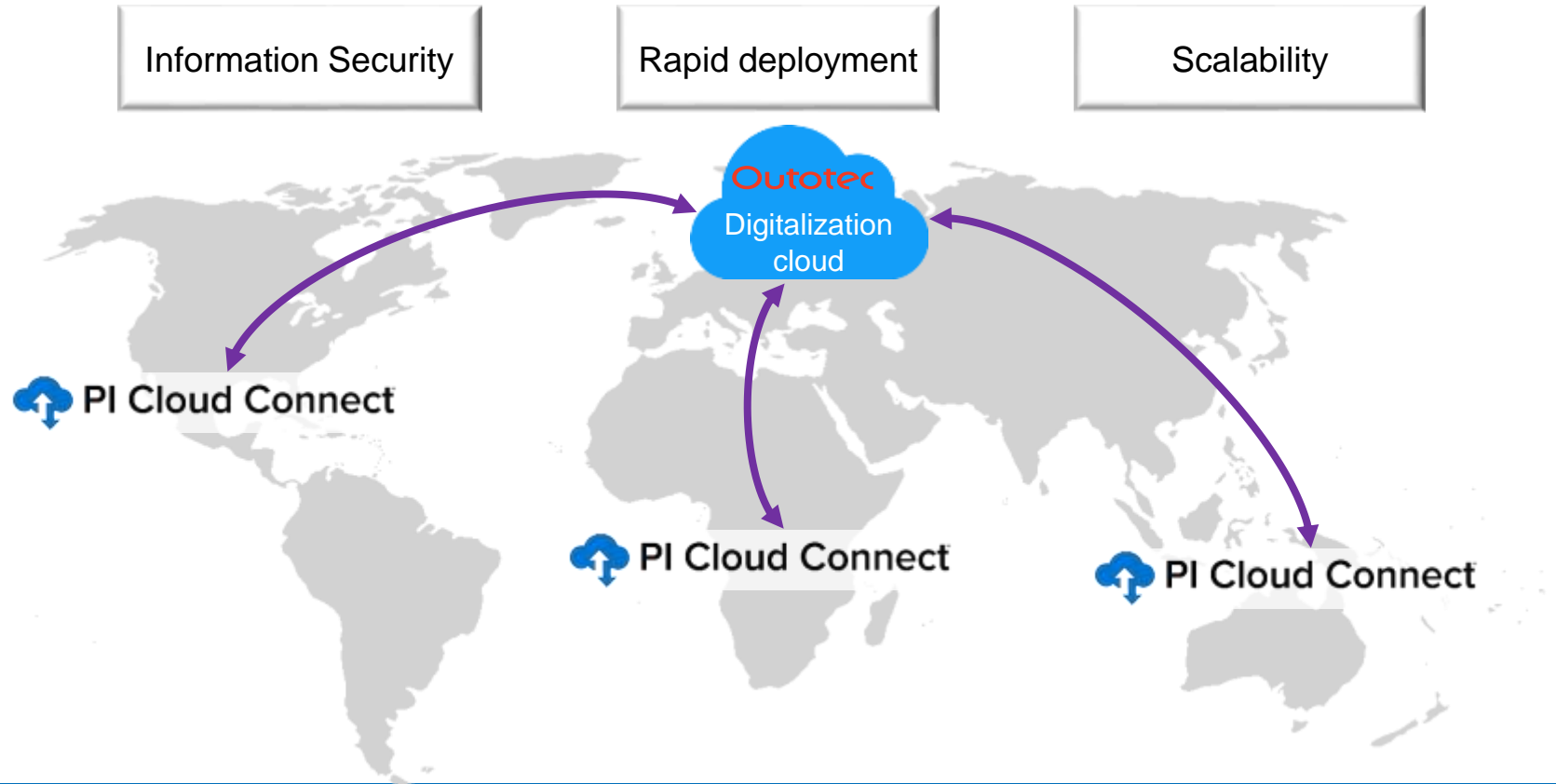
OSIsoft Cloud Services



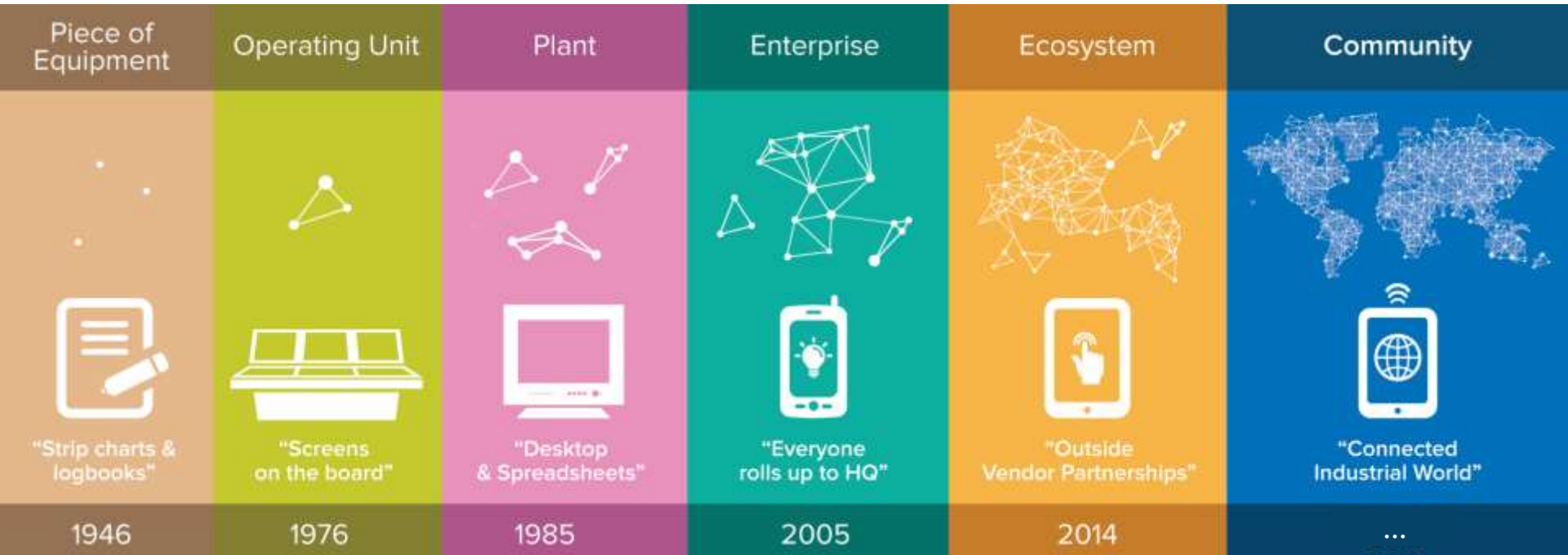
Released in 2015: PI Cloud Connect



Outotec: Scalable architecture to meet global demand



A journey to a more connected world



Integrators

- Start thinking about your use cases?
- Come to the product talk to and our booth to see the product in action

Coresight

- Download the latest version now!
- Start planning for an integrated visualization platform!

TechCon Presentations

- 12 presentations
- In-depth talks

Day 3 TechCon Presentations

PI System 101:
Basics for
Beginners

PI Server 2016: The
Modern PI System

Best Practices for
Using and
Deploying the PI
Asset Framework

Event Frames: How
to Provide Context to
Critical Events (Life
Sciences)

Bridge IT and OT
with a Process Data
Warehouse

PI Integrator for
ArcGIS

The Tao of Qi -
OSIsoft's New
Martial Art

PI Coresight 2016:
New Vision, New
Display Editor, New
Look & Feel

All the Ways to
Connect to PI
Systems

Connectivity from A
to Z - Roadmap for
PI Connectors and
PI Interfaces

Getting Started with
IIoT and the PI
System

Programming Tools
for the PI System

Integrators

- Start thinking about your use cases?
- Come to the product talk to and our booth to see the product in action

Coresight

- Download the latest version now!
- Start planning for an integrated visualization platform!

TechCon Presentations

- 12 presentations
- In-depth talks

Product Expo

- Visit the Partner and Product Expo to learn more!

Contact Information

Sander Kim

sander@osisoft.com

Director, Product Management &
Product Marketing

OSIsoft, LLC



Questions

Please wait for the **microphone** before asking your questions



State your **name & company**

Please remember to...

Complete the Online Survey
for this session



Download the Conference App for
OSIsoft Users Conference 2016

- View the latest agenda and create your own
- Meet and connect with other attendees

Download on the
App Store

GET IT ON
Google Play

HTML

search **OSISOFT** in the app store



<http://ddut.ch/osisoft>

감사합니다

谢谢

Danke

Merci

Gracias

Thank You

ありがとう

Спасибо

Obrigado

The background of the entire image is a blue-tinted photograph of the San Francisco skyline, featuring the Golden Gate Bridge on the left and the Transamerica Pyramid on the right. The OSIsoft logo is centered at the top in white.

OSIsoft®

USERS CONFERENCE 2016

April 4-8, 2016 | San Francisco

TRANSFORM
YOURWORLD