

The background of the entire image is a dark blue gradient. On the left side, there is a faint, stylized image of the San Francisco Bay Bridge. On the right side, there is a faint silhouette of the San Francisco skyline, including the Transamerica Pyramid. The OSIsoft logo is positioned at the top center.

OSIsoft®

USERS CONFERENCE 2016

April 4-8, 2016 | San Francisco

TRANSFORM
YOUR WORLD



Leveraging the PI System as the Foundation of Production Systems **Roadmap for Evolution**

Presented by **Rodrigo Quintero**

Operations Model & Planning Manager



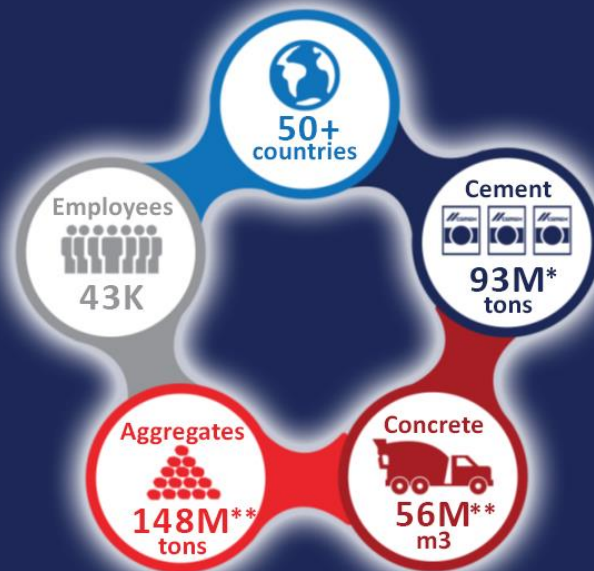
Company overview

Business

CEMEX is a global building materials company that provides high-quality products and reliable service to customers and communities in more than 50 countries throughout the world.

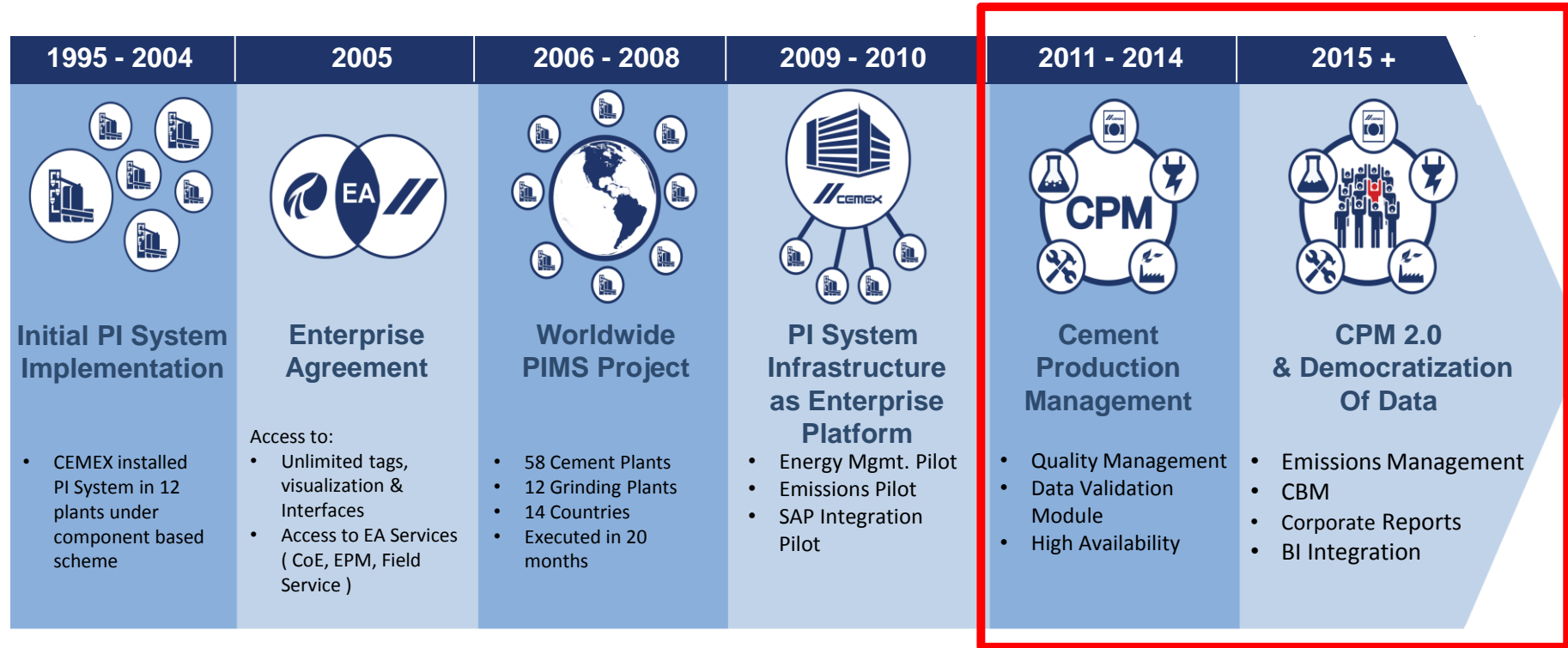
A global industry leader

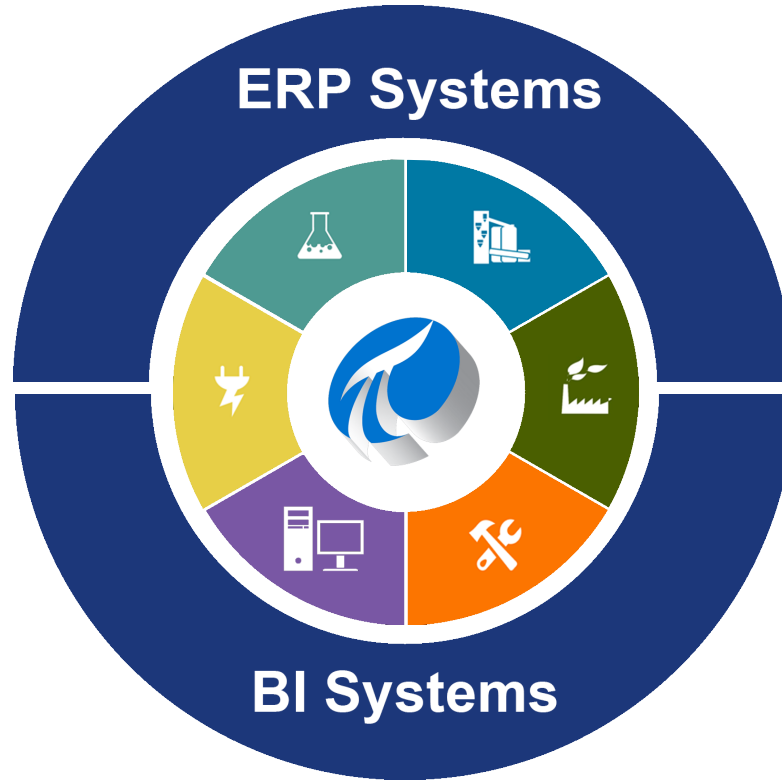
- Annual sales of US\$14.13 billion
- One of the leading cement manufacturers in the world
- World's leading supplier of ready-mix concrete, and one of the world's largest suppliers of aggregates
- One of the world's top traders of cement and clinker



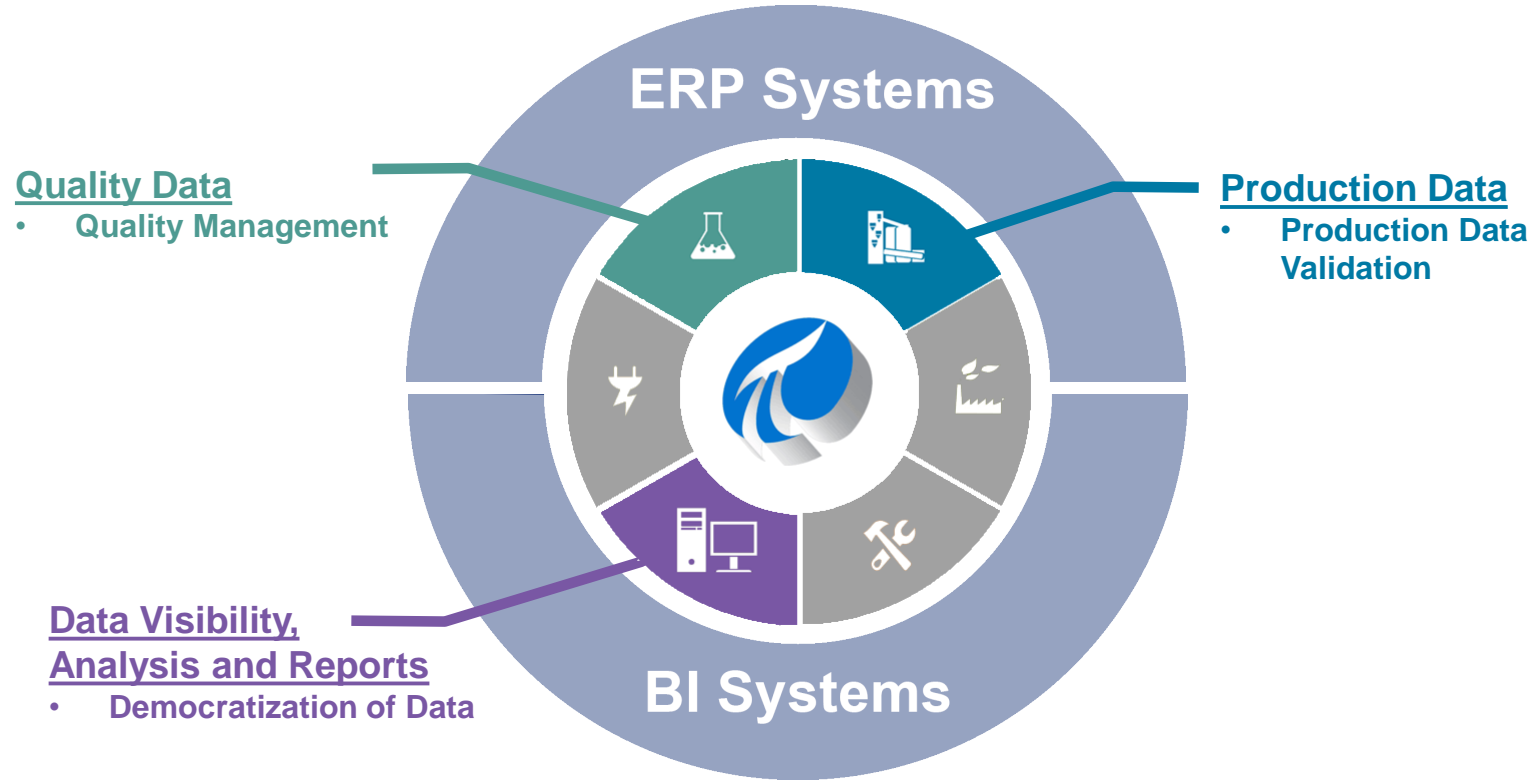
* Production Capacity ** Annual Production Levels

CEMEX - Journey through Operational Intelligence





CEMEX - Cement Production Management





CPM Initiatives

Use Cases

CPM - Production Data Validation



Challenges

- Automation of production data validation and reconciliation.
- Provide production managers a set of standard criteria to assess raw data from the plant floor to certify its accuracy.
- Send automatic to SAP system end-user validated data.
- Lower gap differences between raw data and validated data.
- Replace legacy system.

Solutions

- Create a web based application for data validation and integration with SAP.
- Tools used:
 - **PI Data Archive**
 - **PI Asset Framework**
 - **PI SDK / AF SDK**
- No tag license limitation.
- Use of CoE recommendations on the use of AF.

Benefits

- Single point for data entry.
- Simple way to control operational data.
- Ensure data accuracy and reliability.
- Standardize criteria to report production results.
- Minimize time to process data and avoid reprocessing.
- Maintain references for future operations audits.

**Inventory Adjustments
reduction (2011-2014):
95 % Clinker
47 % Cement**

CPM - Quality Management



Challenges

- Correlate quality and operations data.
- Reduce data consolidation times.
- Deploy a flexible solution to read data from different lab equipment vendors.
- Share real time quality data with other users.
- Standardize and simplify access to data.
- Difficult to consolidate global information.

Solutions

- Replace existing Legacy system leveraging existing PI System infrastructure at each plant .
- Tools used:
 - **PI Data Archive**
 - **PI Datalink / MS Excel**
 - **PI UFL for X-Ray analyzers**
- No tag license limitation
- No extra user licenses required

Benefits

- Single point for data entry.
- Quality and Production data correlation.
- Data Standardization.
- Real-time Quality KPI's
- Faster data gathering process
- Enhanced data security
- Cross business visibility.

Reduction of Total Cost of Ownership (TCO)

CPM – Democratization of Data



Challenges

- Enable the Business Intelligence platform to access the operation data.
- Reduce data extraction and preparation time, since it was taking approximately 1 month effort.
- Provide context to the data:
Information into insights
- Make data accessible to other areas of the company -
Democratization of Data to have continuous improvements.

Solutions

- Configured extraction views from PI System which deliver data to Business Analysis tools, such as Tableau.
- Tools used:
 - **PI Asset Framework**
 - **PI Integrator for BA**
- Use of CoE recommendations
- Configured a Cement Operations Data Model in AF.

Benefits

- Extraction time reduction.
- No development cost since PI Integrator for BA is intuitive and self configuring.
- Simple way to analyze operational data.
- Opened new conversations across the company.
- More time spent on value added activities.

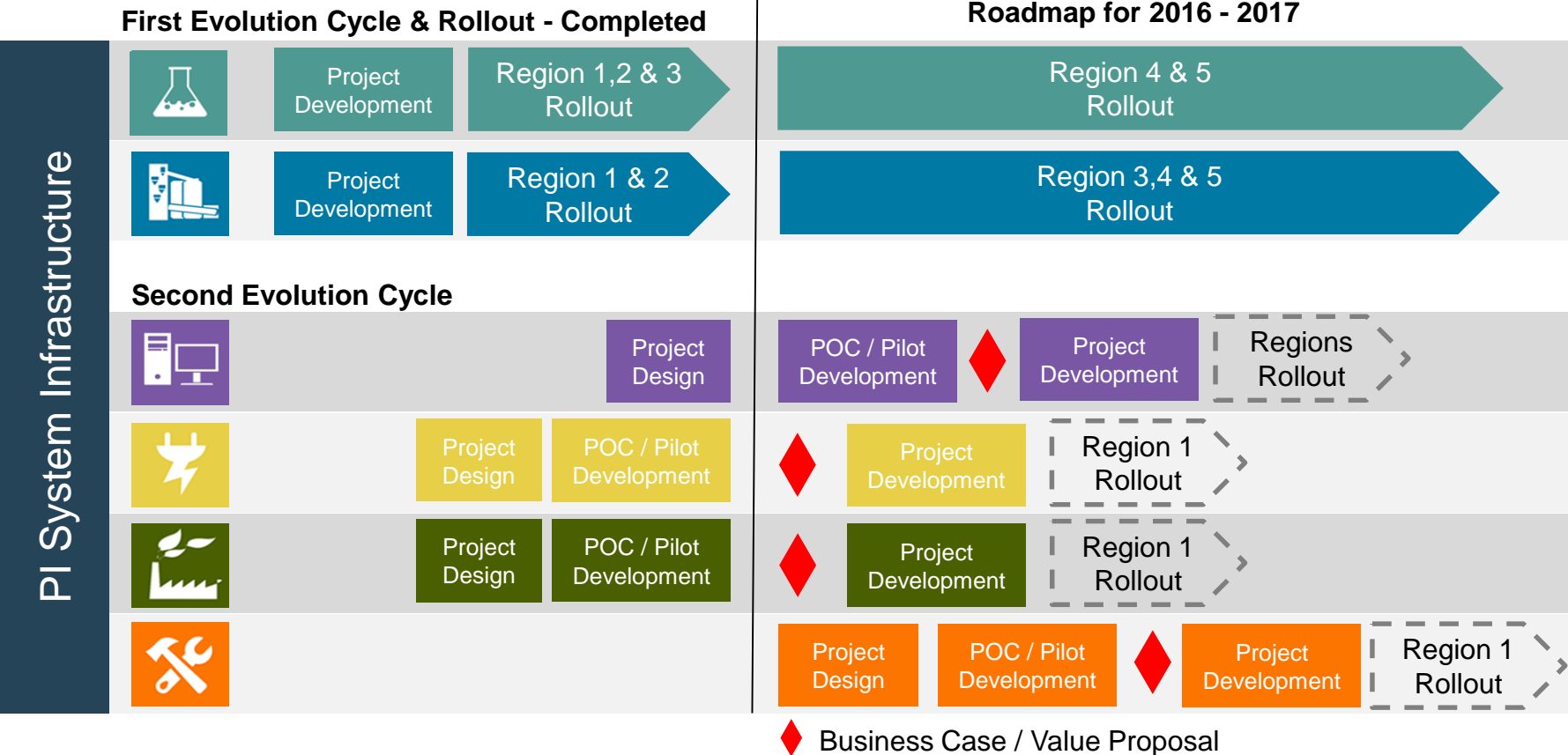
**Data extraction time
reduced from
1 month to 5 minutes.**



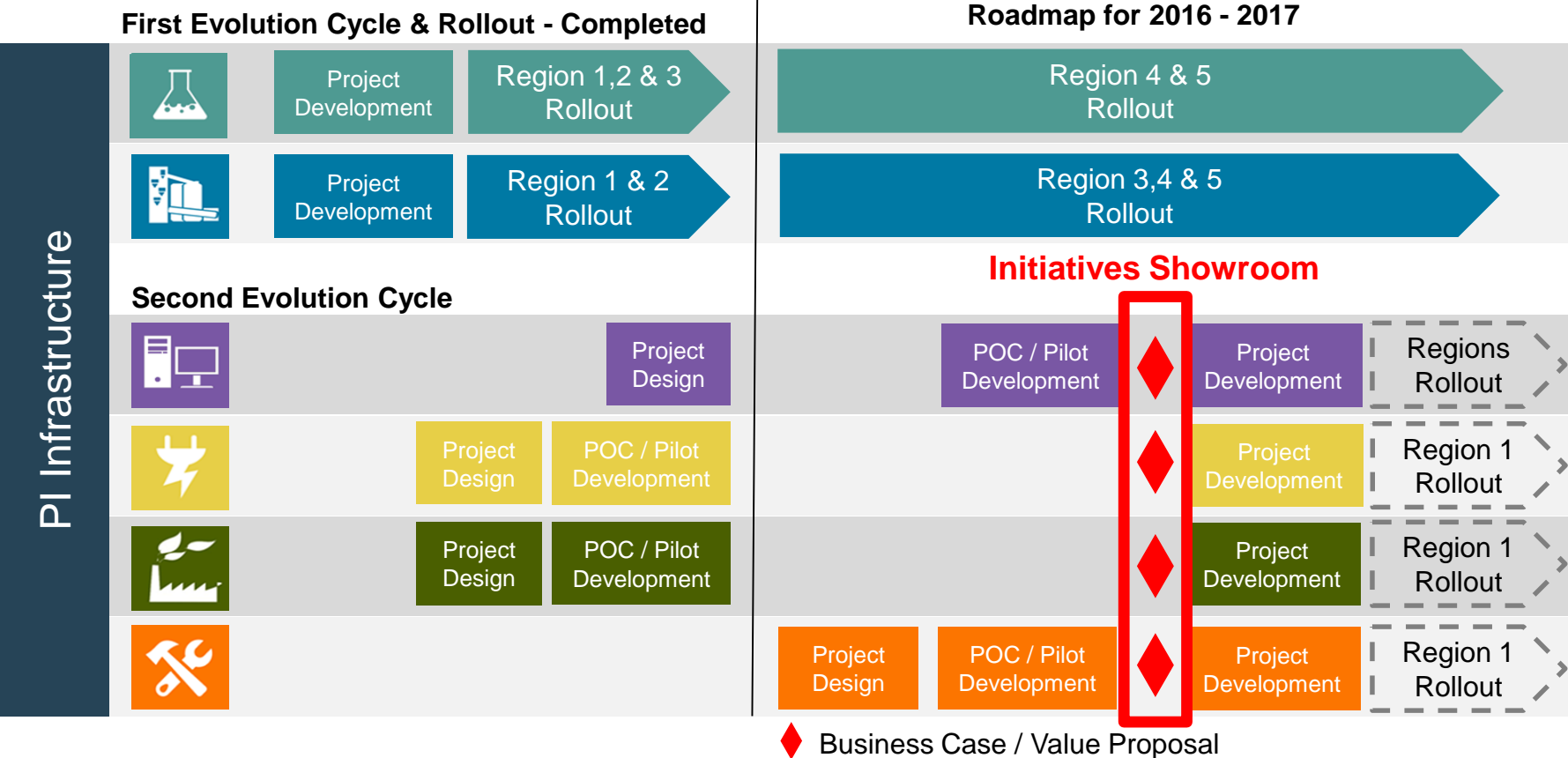
CPM 2.0

Evolution Strategy

CPM Evolution Roadmap



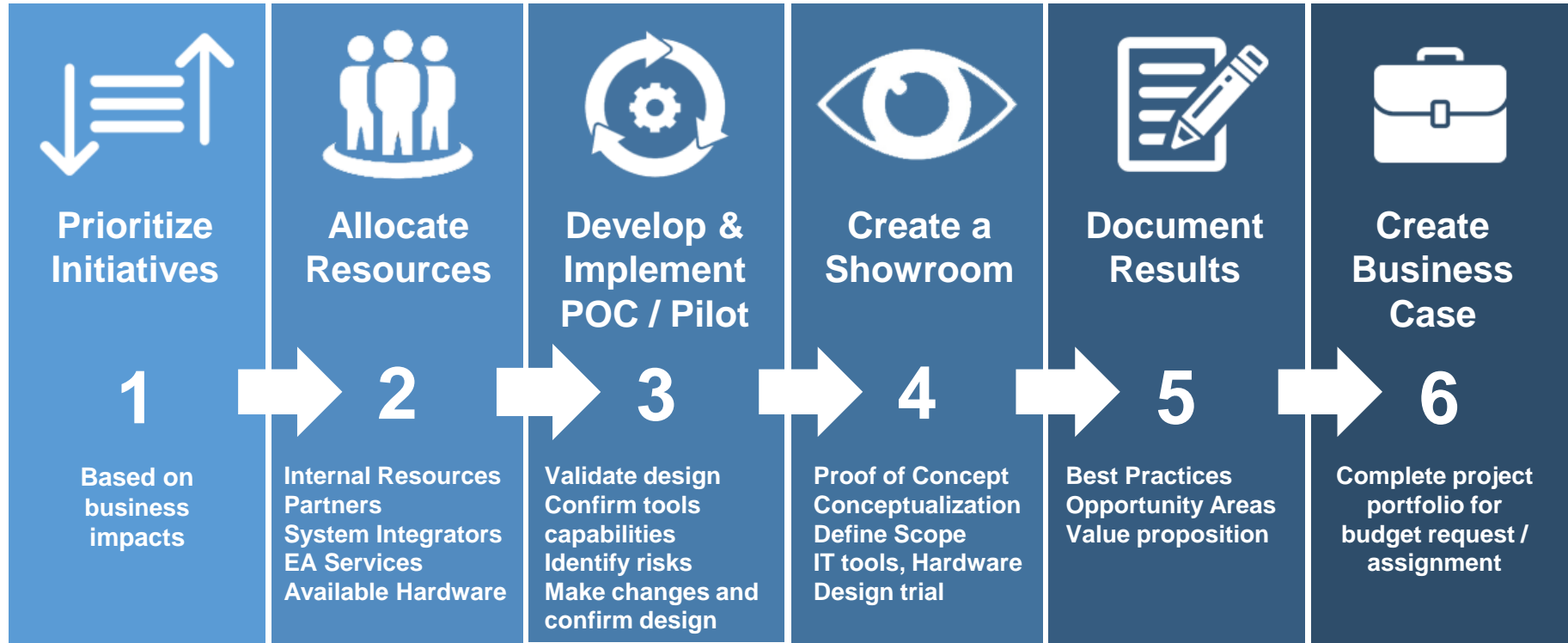
CPM Evolution Roadmap



CPM Future Initiatives & Defining a Business Case

Initiative	Objective	
Global Quality KPI	Consolidate and compare in a single platform quality and production data.	
Corporate Control Center	Replicate all plants' Control Center panels to enable a centralized monitoring and support team.	
Cement Operation Management Platform	Standard all plant dashboard platform for operation management.	
Downtime Analysis	Record, alarm and analyze all downtimes to minimize operation impacts and prevent future downtimes.	
Vibration Analysis	Incorporate the analysis being performed manually into PI System.	

Building the Business Case



Lessons learned:

- Capture needs and proposals from the operations' network to build the initiative list of projects.
- Check all initiatives correspond to a defined company model.
- Map all initiatives to company objectives and business impacts.
- Testing is never a waste of time.
- Build a showroom, with the least possible use of resources.
- Document value obtained in each initiative.
- This is always an ongoing cycle. Keep moving forward

Questions

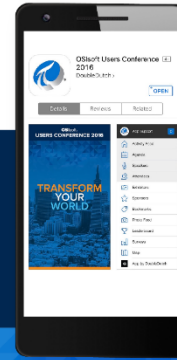
Please wait for the **microphone** before asking your questions



State your **name & company**

Please remember to...

Complete the Online Survey for this session



Download the Conference App for OSISOFT Users Conference 2016

- View the latest agenda and create your own
- Meet and connect with other attendees



search **OSISOFT** in the app store



<http://ddut.ch/osisoft>

감사합니다

谢谢

Danke

Merci

Gracias

Thank You

ありがとう

Спасибо

Obrigado

The background of the image is a dark blue gradient with a faint, stylized cityscape of San Francisco, including the Golden Gate Bridge and the Transamerica Pyramid. The OSIsoft logo is positioned at the top center.

OSIsoft®

USERS CONFERENCE 2016

April 4-8, 2016 | San Francisco

TRANSFORM
YOURWORLD