

The background of the entire image is a dark blue gradient. On the left side, there is a faint, stylized image of the San Francisco Bay Bridge. On the right side, there is a faint silhouette of the San Francisco skyline, including the Transamerica Pyramid. The OSIsoft logo is centered at the top in white.

OSIsoft®

USERS CONFERENCE 2016

April 4-8, 2016 | San Francisco

TRANSFORM
YOUR WORLD



PI Server 2016

The Modern PI System

Presented by **Janelle Minich, Product Manager**
Stephen Kwan, Product Manager



PI Server 2015 Highlights



Previously, on PI Data Archive 2015...

Future Data

Mor

Context
Values

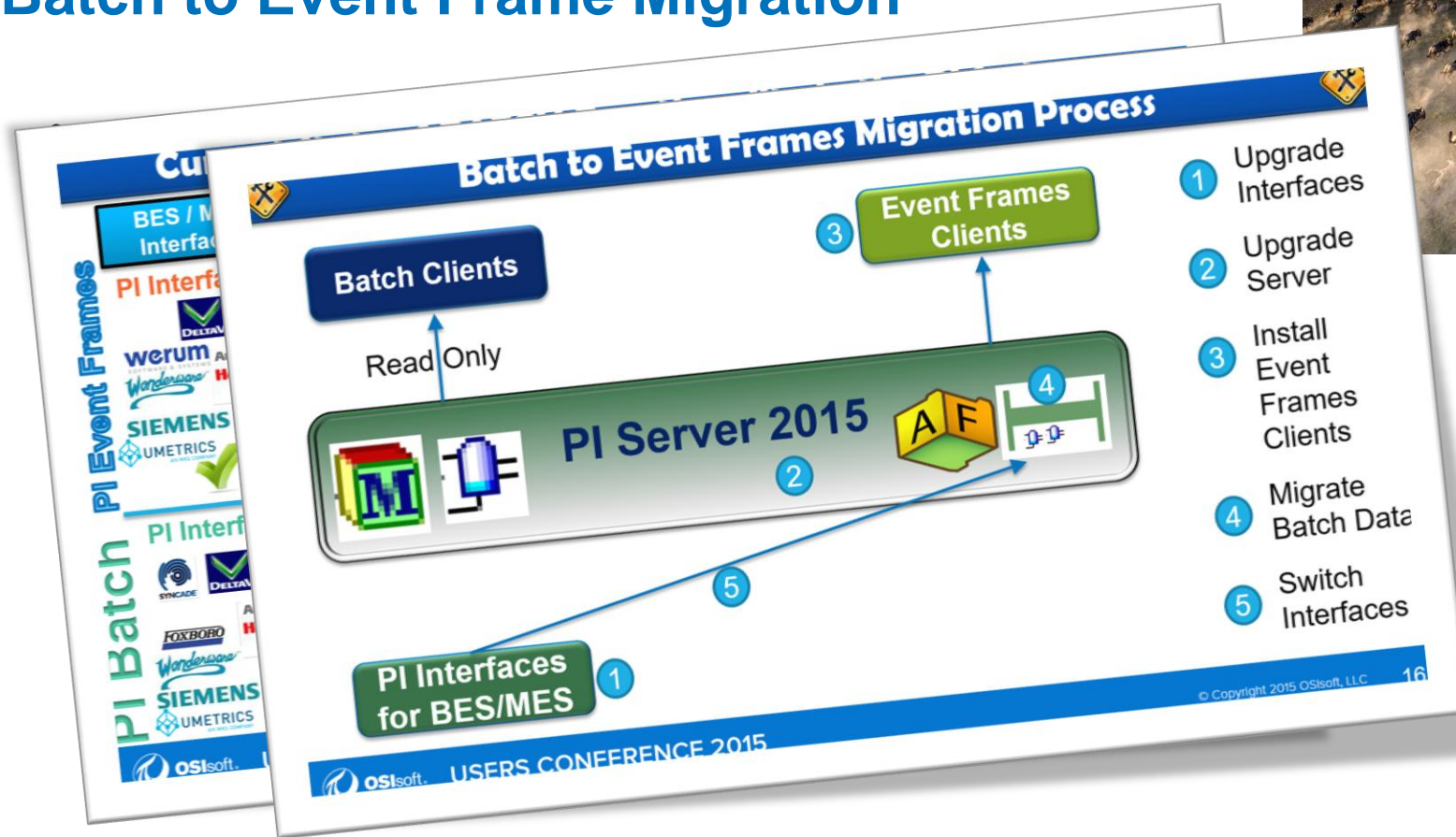
Item
Discovery

Smart
Time
Range



PI
Server
2015

Batch to Event Frame Migration





KEY BENEFITS

1. Staged Deployment
2. Backward Compatibility
3. Easy Configuration
4. Flexible Data Management
5. Straightforward Analytics
6. Powerful Visualization
7. Security, Scalability





Now we present: PI Data Archive 2016

What's new in PI Data Archive 2016?

Improved Archive Management



Detect when archive is corrupt



Enable online reprocessing of archives via PI SMT

What's new in PI Data Archive 2016?

Improvements for other server components



Support for recalculation in Analytics (future AF release)



More efficient data retrieval by PI AF (available in 2016)

THE FOLLOWING **PREVIEW** HAS BEEN APPROVED FOR
ALL AUDIENCES
BY OSIssoft

www.filmratings.com

www.mpaa.org



Now we present: PI Asset Framework with Asset Analytics

Richer Context for your Data

- Well defined traits for attributes
 - Limits
 - Forecasts
- Annotations
- Identify manual entries
- Enable better client interactions
 - PI Coresight



More Context for your Important Events

- Event frames enhancements
 - Severity
 - Acknowledgements
 - Annotations



THE FOLLOWING **PREVIEW** HAS BEEN APPROVED FOR
ALL AUDIENCES
BY OSIssoft

www.filmratings.com

www.mpaa.org

Faster and Better



New search methods

- Backwards compatible

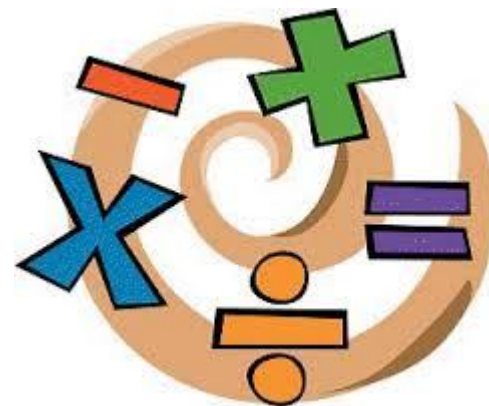


Data Access

- Asynchronous data access calls in AF SDK
- Wide Queries

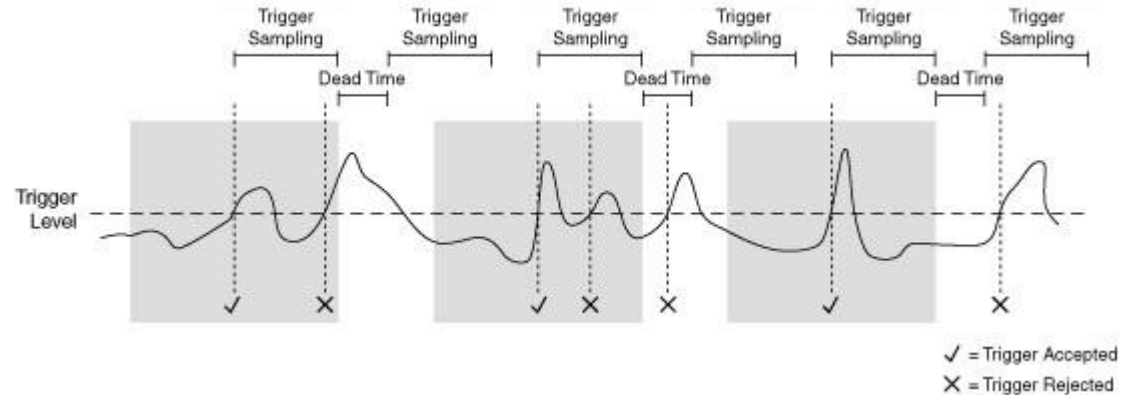
Other Improvements

- Additional functions
 - Compare with deadband
 - Rate of change
- SQC
 - Output to attribute
 - Generate event frame



Event Frame Generation Analyses

- More flexible triggering options
 - Multiple start triggers
 - Individual time true
- Assign severity





Coming Soon: Beyond PI Server 2016



Beyond PI Server 2016

Manageability

PI System
Health

Scalability/
Performance

Improved Client
Interactions
with Data

Manageability

mangageable:

adjective man·age·able \ 'ma-ni-jə-bəl \

Definition:

: easy to control or deal with

We hear you

“Administration seems to be what sometimes slows us down, because we have to go so many places. Message logs, command line tools - all over the place. **It would be nice to have everything in a one-stop interface.**”

“Everything seems fine, but it can be there is no data - **it's hard to tell what the problem is.**”

“**I'm not sure if I'm monitoring everything that I should.** Should I monitor backups, for example?”



Manageability examples

- Improved Administrative experience
- Ex: Online Archive reprocessing

Administration



- Proactively let you know when the system needs attention
- Ex: You are about to run out of disk space

Health



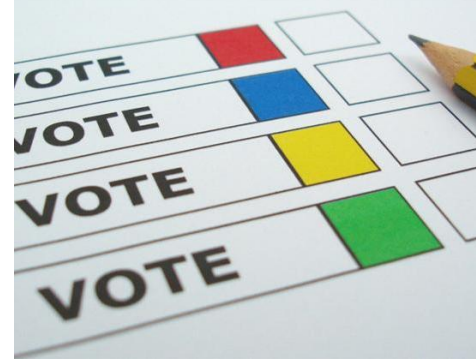
- Tell you # of users and # of clients that are accessing your system
- Ex: Easier to manage hardware resources to allow for all of your connections

Connections



What do you think?

- 2 ways to participate:
 - Log in to PollEv.com/OSIsoftUC
 - Text OSISOFTUC to 22333
- Then respond with your answer in the following polls



Your poll will show here

1

Install the app from
pollev.com/app

2

Make sure you are in
Slide Show mode

Still not working? Get help at pollev.com/app/help
or

[Open poll in your web browser](#)

PI System Manageability

- In early planning stages now
- We hear from you that managing a PI Server is hard to do
- Our goal is to continue to improve your experience with PI Server Administration



PI System Administration

- How much time do you spend administering your PI System today?



Managing
Archives

Building Assets

Configuring
Security

Troubleshooting

Etc...

Your poll will show here

1

Install the app from
pollev.com/app

2

Make sure you are in
Slide Show mode

Still not working? Get help at pollev.com/app/help
or

[Open poll in your web browser](#)

PI System Administration

- Do you do any of the following:
 - Manage multiple servers/data collection nodes
 - Have a distributed system (ex: PI AF is installed on a different server than PI Data Archive)
 - Manage multiple physical locations



Your poll will show here

1

Install the app from
pollev.com/app

2

Make sure you are in
Slide Show mode

Still not working? Get help at pollev.com/app/help
or

[Open poll in your web browser](#)

PI System Administration

- Dashboard for PI Server Management
 - In early planning stages
 - More intuitive, easy to use
 - Plan to enable PI Server Management from one unified tool.



Your poll will show here

1

Install the app from
pollev.com/app

2

Make sure you are in
Slide Show mode

Still not working? Get help at pollev.com/app/help
or

[Open poll in your web browser](#)

PI System Health

- We know it's hard to tell if your PI System is healthy
- We want to make this easier for you
- We are considering making this information available in a single pane of glass – alongside other PI System Management functions like Administration and Configuration



Assets

- Improve installation experience
- Improve management
- Web based configuration tool
- More traits
- Performance and scalability improvements
- Backend support for next generation PI Notifications



Managing your Analyses

- Analysis service diagnostics and debugging
- Manual recalculation
- Scalability
- Research support for failover



Next Generation PI Notifications



- Rewrite of PI Notifications
 - Migration tool
- Based on event frames
 - Container for event information
- Improved scalability and performance
- Improved integration with the PI System
 - First class citizen in PI Coresight
- Beta available soon



Looking for Feedback



Contact Information

Stephen Kwan

skwan@osisoft.com

Product Manager

OSIsoft, LLC.



Janelle Minich

janelle@osisoft.com

Product Manager

OSIsoft, LLC.



Questions

Please wait for the **microphone** before asking your questions

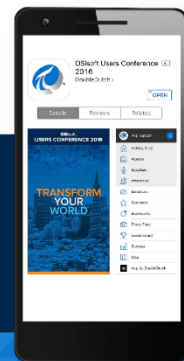


State your **name & company**

Please remember to...

Complete the Online Survey for this session

Download the Conference App for OSISoft Users Conference 2016



- View the latest agenda and create your own
- Meet and connect with other attendees



search **OSISOFT** in the app store



<http://ddut.ch/osisoft>

감사합니다

谢谢

Danke

Merci

Gracias

Thank You

ありがとう

Спасибо

Obrigado

The background of the entire image is a dark blue gradient. On the left side, there is a faint, stylized image of the San Francisco Bay Bridge. On the right side, there is a faint silhouette of the San Francisco skyline, including the Transamerica Pyramid. The OSIsoft logo is centered at the top in white.

OSIsoft®

USERS CONFERENCE 2016

April 4-8, 2016 | San Francisco

TRANSFORM
YOURWORLD