

The background of the image is a dark blue gradient with a faint, stylized cityscape of San Francisco, including the Golden Gate Bridge and the Transamerica Pyramid. The OSIsoft logo is positioned at the top center.

OSIsoft®

USERS CONFERENCE 2016

April 4-8, 2016 | San Francisco

TRANSFORM
YOURWORLD



The Mills and the Visual

Presented by **Chris Nelson, Ronan/Laurent, John Baier**



PI Coresight 2016 Vision & Extensibility

Modern visualization infrastructure

Making these capabilities available for

- Extensibility
- Office productivity
- Portal integration



A single tool for your visualization needs

Today



PI ProcessBook

Display Editor
Process Monitoring



PI Coresight

Ad Hoc Analysis
PB Display Viewer



PI WebParts

Dashboards

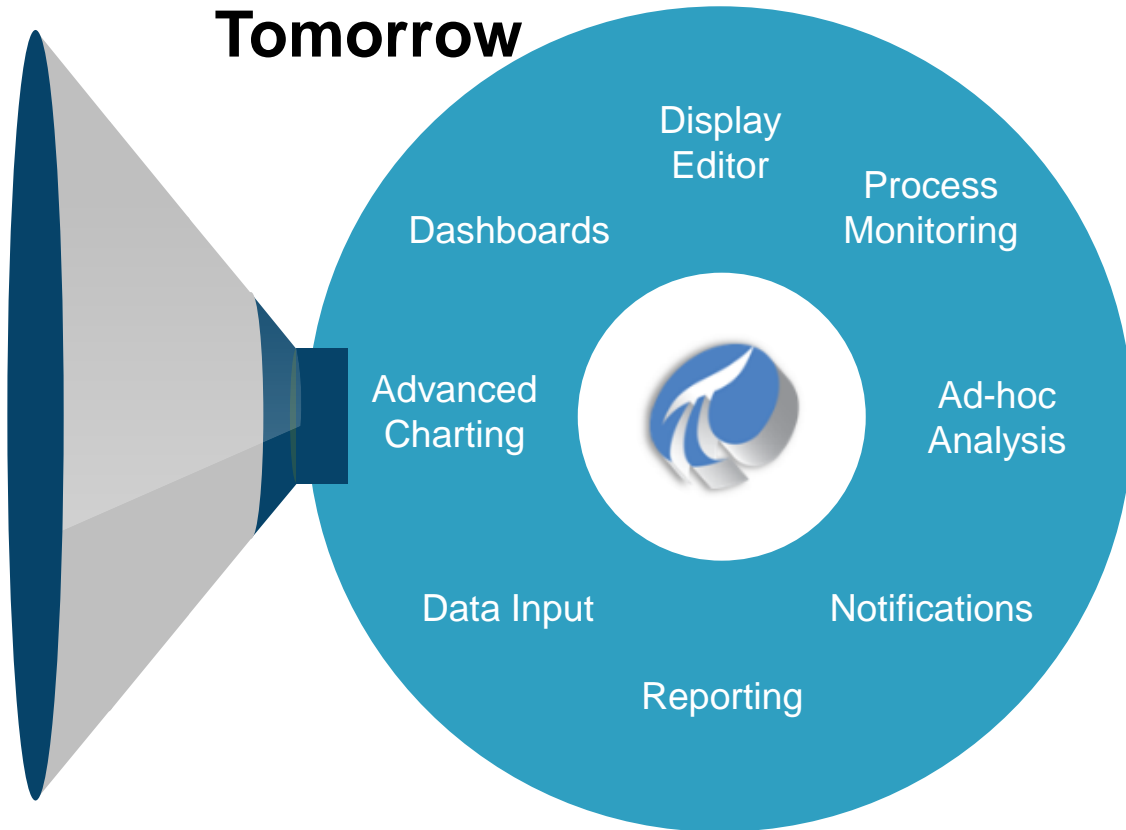


PI Manual Logger

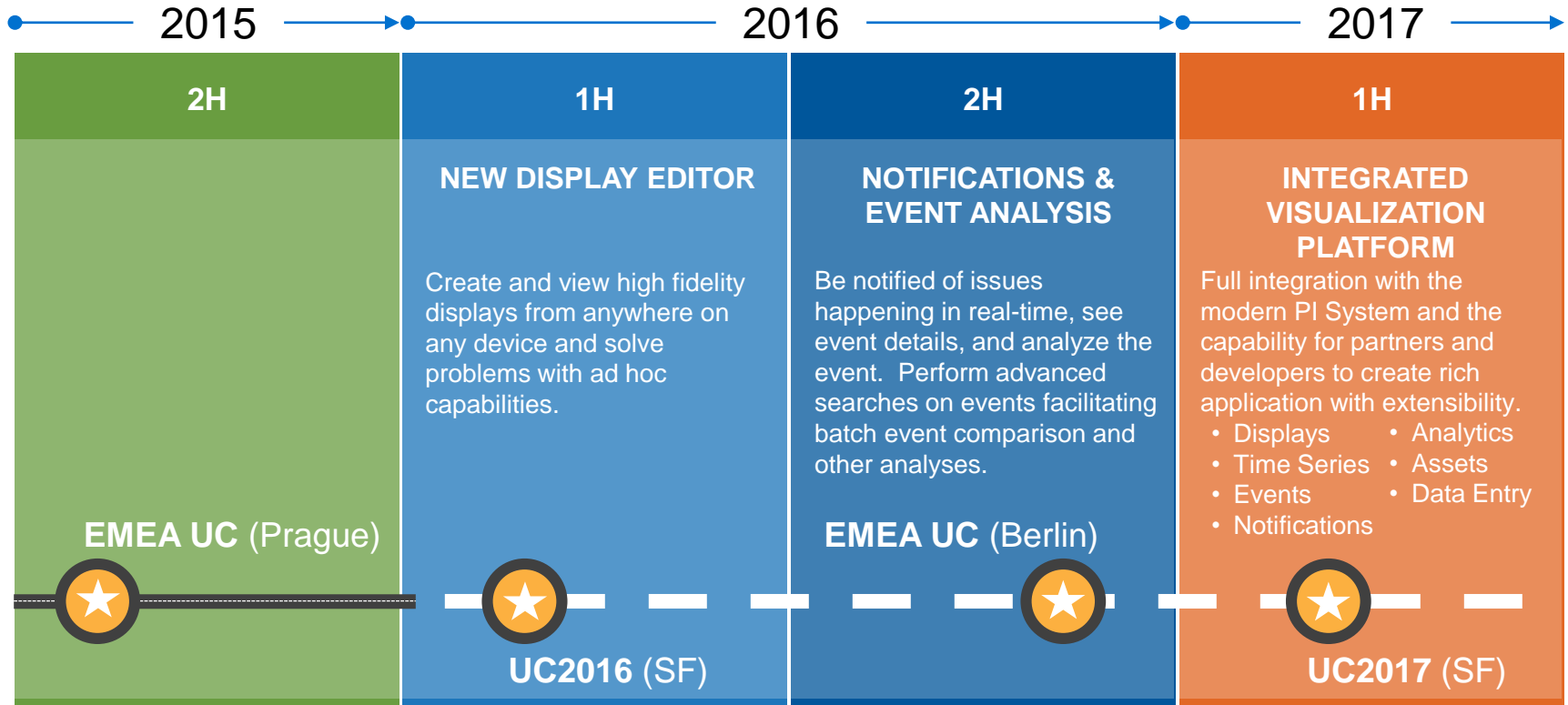
Manual Data Entry



Tomorrow



PI Coresight Roadmap



Extensibility Pattern

Overview

- Avenues of Extensibility
 - Consumer: 3rd party extensions hosted in Coresight
 - Producer(future): PI Visualization Toolkit
- PI Coresight as a visualization platform
 - Focus: Core visuals & infrastructure
 - Opportunity: Advanced visuals, tools & mashups.
- Research done
 - Reviewed extensibility models used by Google Gadgets, Microsoft Office/Sharepoint
 - Met with members of Esri's Operations Dashboard team
 - Partner interviews

PI Coresight 2016 Extensibility CTP

- Functionality Available
 - Support for Symbols and Tools (basic)
 - Symbol configuration experience
 - Leverage existing frameworks
 - Integrated data access provided for PI Server AF sources

A truly extensible visualization infrastructure

Who will use expansions?



OSIsoft Teams



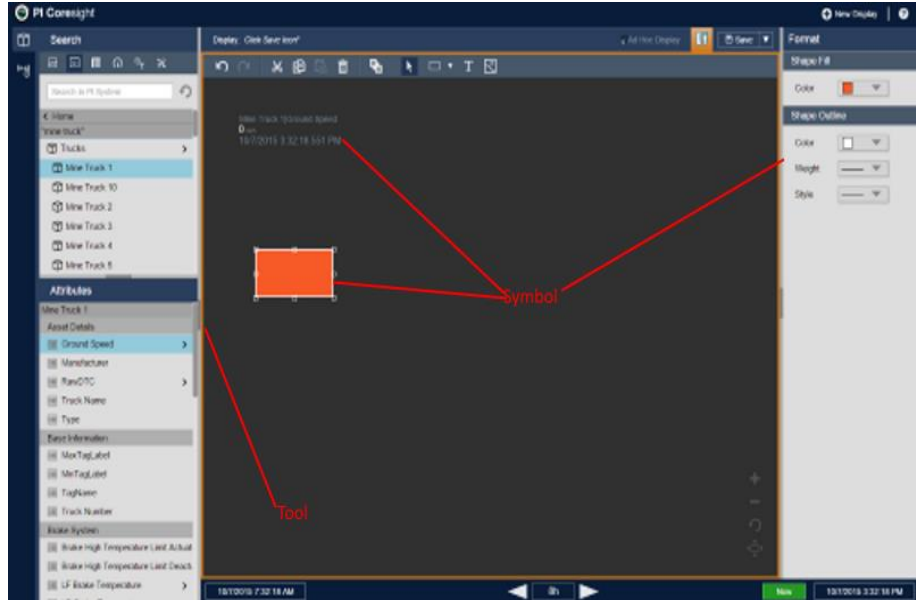
Partners



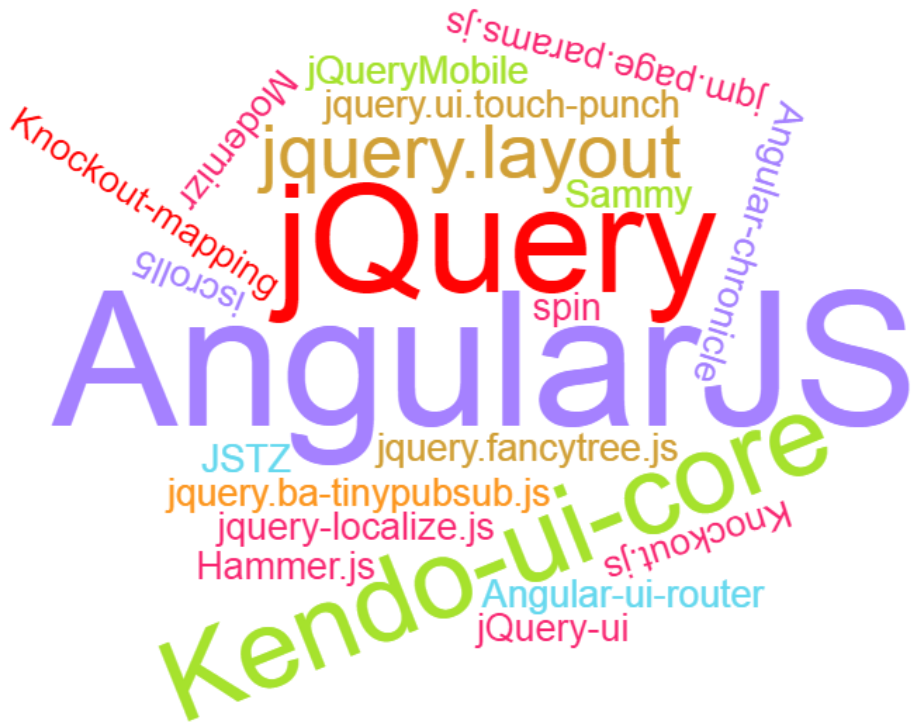
Customers

Extensibility Vision

- Client Side
 - 2 types (Symbol and Tool)
 - HTML/JavaScript packages
 - Rich two way interaction
 - Localizable
 - Commanding
 - Integrated data access provided for PI/AF sources
- Server Side (optional)
 - Extensions via PI Web API
 - Business logic
 - Non PI System Data
- Marketplace
 - Commercial licensing



Leveraging Open Source



It's in there

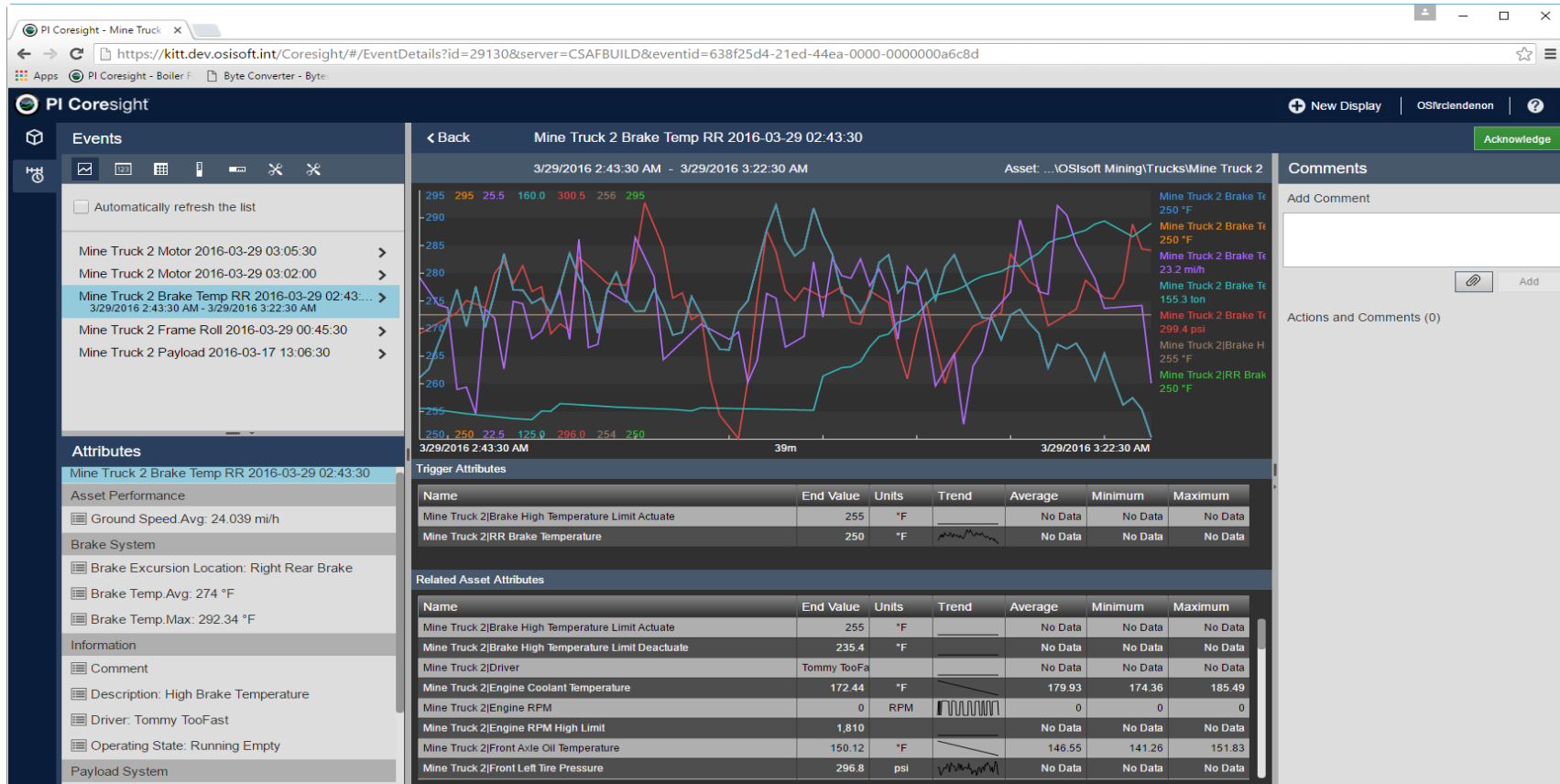
Provide this

```
var definition = {  
  typeName: 'simplevalue',  
  datasourceBehavior: CS.DatasourceBehaviors.Single,  
  getDefaultConfig: function() {  
    return {  
      DataShape: 'Value',  
      Height: 150,  
      Width: 150,  
      BackgroundColor: 'rgb(255,0,0)',  
      TextColor: 'rgb(0,255,0)'  
    };  
  },  
  StateVariables: [ 'Fill', 'Blink' ],  
  configOptions: function () {  
    return [{  
      title: 'Format Symbol',  
      mode: 'format'  
    }];  
  },  
  ...  
};
```

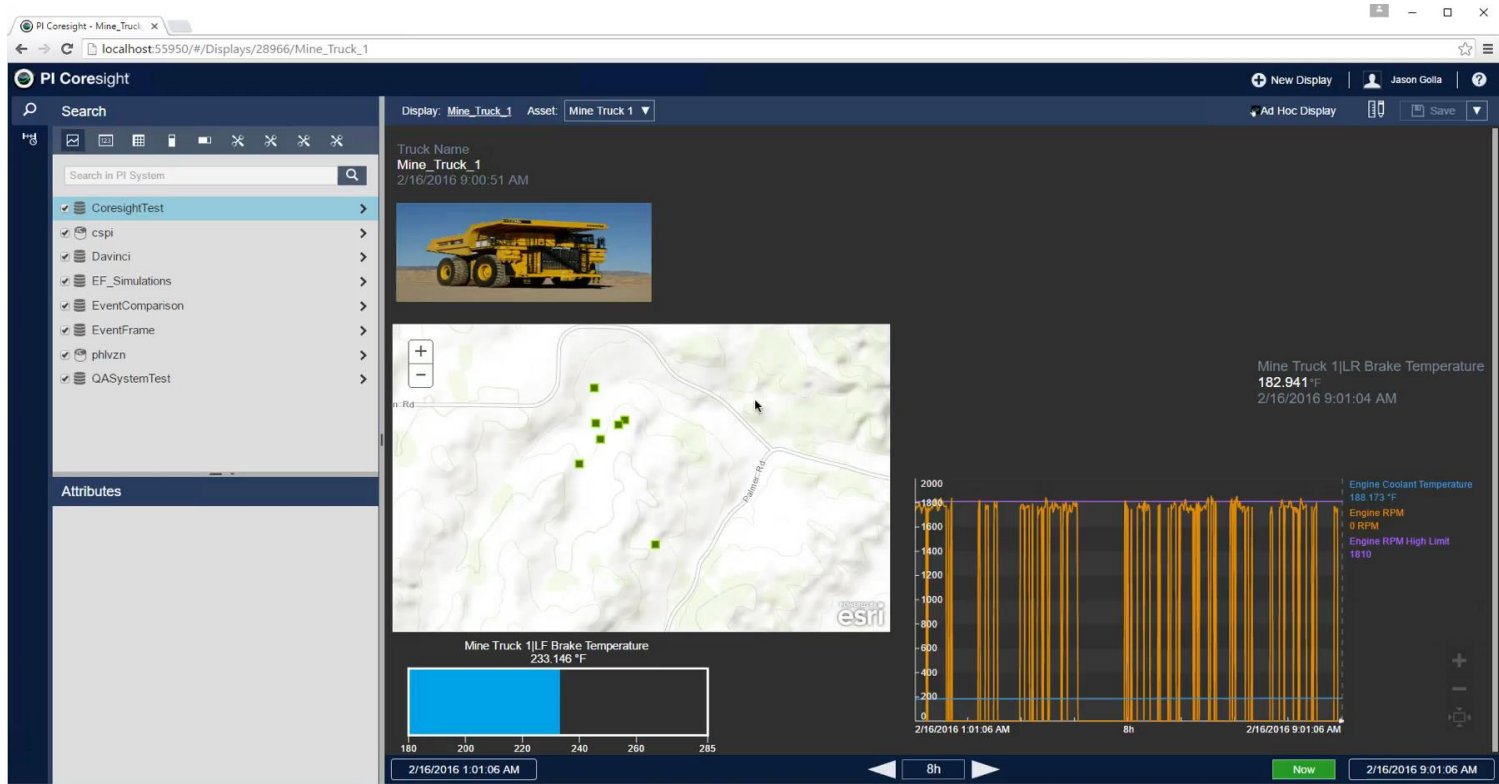
Get this

- Data access
- Data shape
- Timer update
- Default size properties
- Default color properties
- Multi-state behavior
- Configuration pane options
- Persistence
- Undo/redo
- Context switching
- Time
- Asset
- Arrangement

How is OSIsoft using Extensibility



Demo



Call to Action

- Infrastructure in early stages of development
 - Release date: TBD
- Partner engagement opportunities
 - Technology Adoption Program
 - CTP

Questions

Please wait for the **microphone** before asking your questions

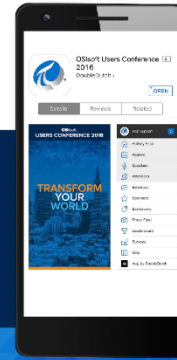


State your **name & company**

Please remember to...

Complete the Online Survey for this session

Download the Conference App for OSISoft Users Conference 2016



- View the latest agenda and create your own
- Meet and connect with other attendees



search **OSISOFT** in the app store



<http://ddut.ch/osisoft>

감사합니다

谢谢

Danke

Merci

Gracias

Thank You

ありがとう

Спасибо

Obrigado

The background of the entire image is a dark blue gradient. On the left side, there is a faint, stylized image of the San Francisco Bay Bridge. On the right side, there is a faint silhouette of the San Francisco skyline, including the Transamerica Pyramid. The OSIsoft logo is centered at the top in white.

OSIsoft®

USERS CONFERENCE 2016

April 4-8, 2016 | San Francisco

TRANSFORM
YOUR WORLD