

The background of the entire image is a dark blue gradient. On the left side, there is a faint, stylized illustration of the Golden Gate Bridge. On the right side, there is a faint silhouette of the San Francisco skyline, including the Transamerica Pyramid. The OSIsoft logo is centered at the top in white.

OSIsoft®

USERS CONFERENCE 2016

April 4-8, 2016 | San Francisco

TRANSFORM
YOURWORLD



Welcome!

Transmission & Distribution Industry Session

Hosted By; • Kevin P Walsh; T&D/Smart Grids



OSIsoft Power and Utilities Industry Principals



David Thomason
Global Power
Generation



Kevin P Walsh
T&D and Smart Grids

Chris Crosby
Global
Nuclear &
Renewable
Energy

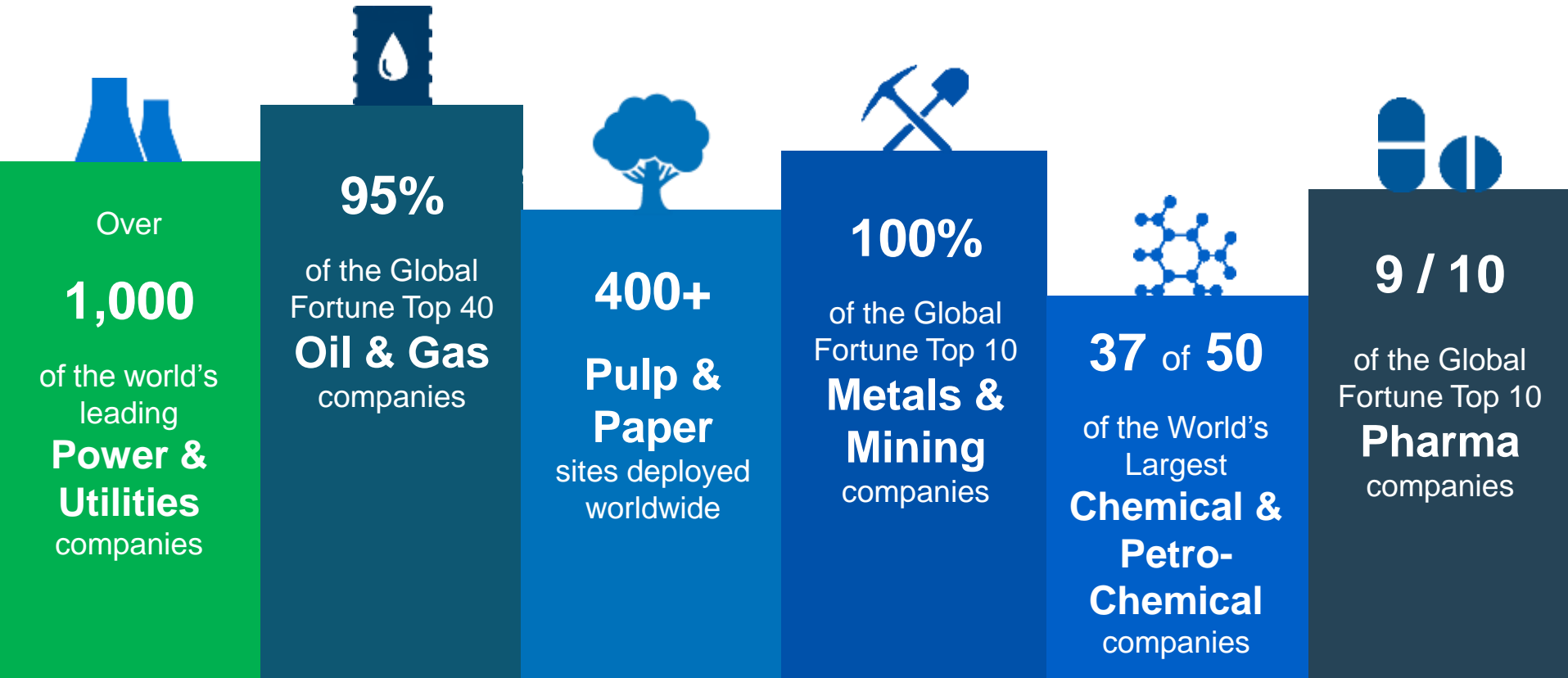


Miguel Chavero
EMEA Power
and Utilities



William E. McEvoy
Distributed Energy
Resources

OSIsoft is trusted by the worlds leading Companies



Defacto in Power and Utilities



Transmission, Distribution and Smart Grids



Markets



HV Transmission



Distribution



Metering



Res Solar



Renewables



Batteries



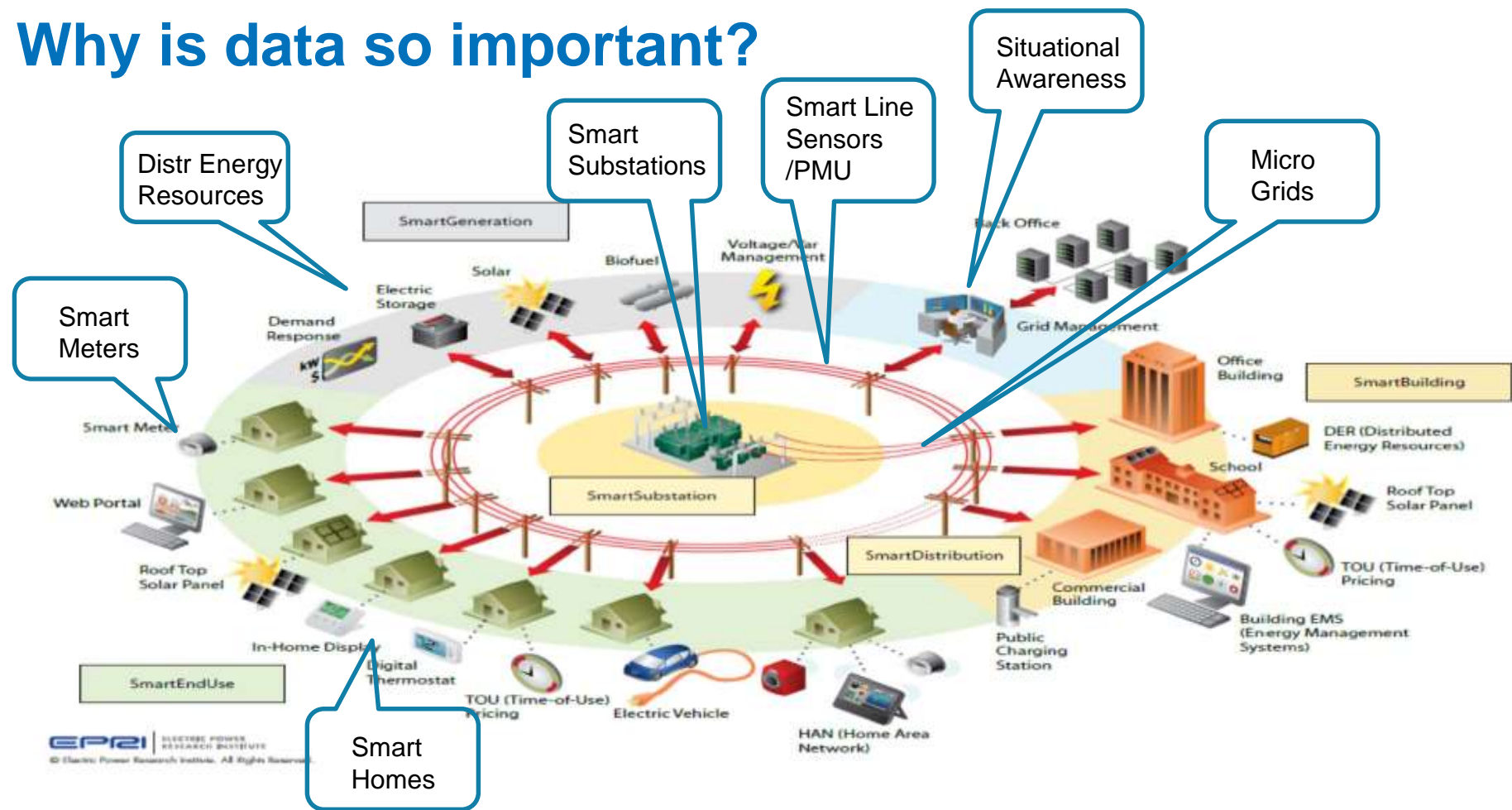
Smart Homes



EV



Why is data so important?



EPRI | ELECTRIC POWER RESEARCH INSTITUTE
© Electric Power Research Institute. All Rights Reserved.

Thank you to our Sponsors

Gold Sponsors



Silver Sponsors



esri



Bronze Sponsors



Thank you to our Exhibitors

Exhibitors





Save the Date! T&D User Group Meeting

- **When:** September 14 thru 16, 2016
- **Where:** Scottsdale, AZ
- **Location:** Hilton Scottsdale Resort & Villas



Today's Line up - AM



- Using Operational Data to improve Dispatchers Situational Awareness



- The Synchrophasor Grid & Automation Lab and OSISOFT's PI System at UCSD



- “Equipment” Failure is not an Option

Today's Line up - PM



- Improving Network Monitoring w/ OSIsoft's PI System



- Use Cases of the PI Integrator for Esri ArcGIS in Distribution



- Asset Maintenance and Condition Assessment

Transmission and Distribution PI User Group

Join to discuss best practices, white papers, share news, and exchange ideas.

Objectives:

- Identify Best Practices
- Share knowledge and ideas across our industry
- Foster communication with OSIsoft regarding our industry needs



This is NOT an avenue for sales presentations or marketing

Want to opt in?

<https://pisquare.osisoft.com/groups/td>

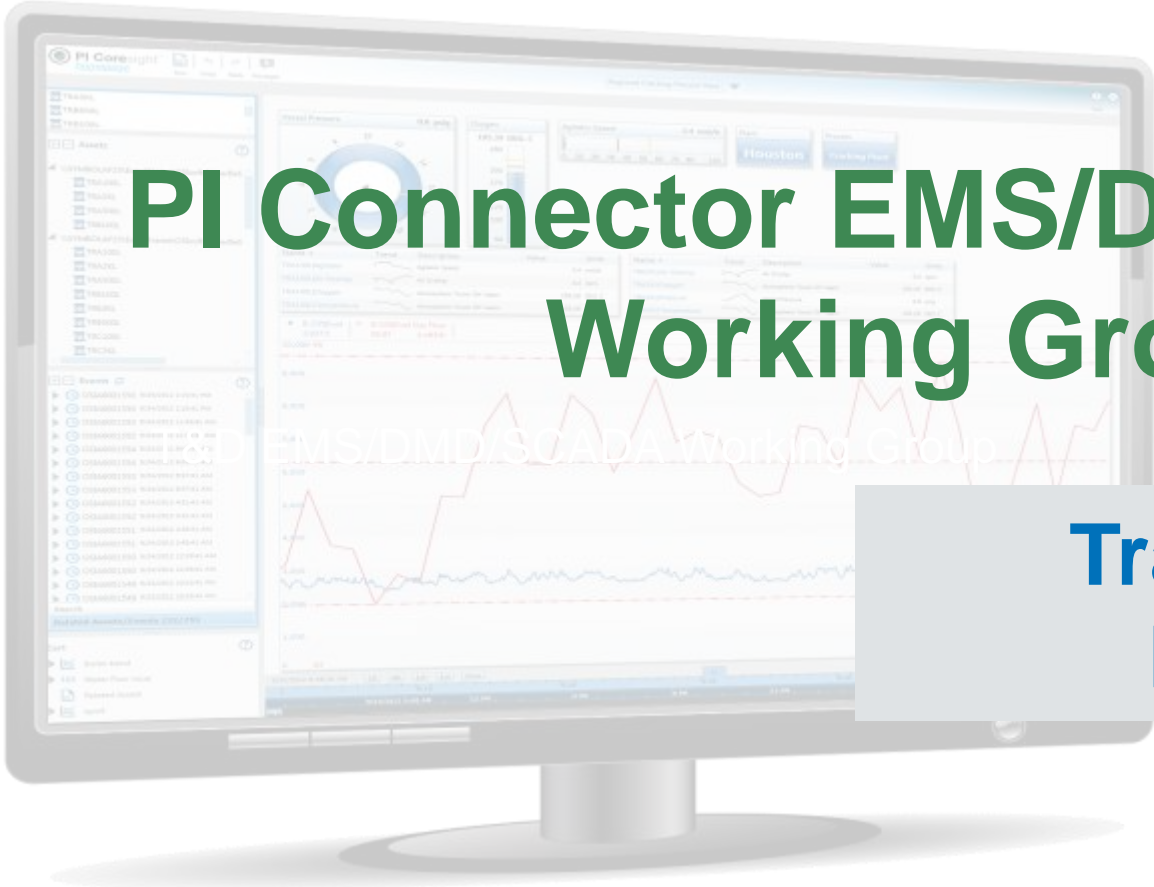
Or contact jsirois@osisoft.com



Have questions?

- jsirois@osisoft.com
- kwalsch@osisoft.com
- Visit the PI Square Booth





PI Connector EMS/DMD/SCADA Working Group

**Transmission &
Distribution**

Presented by: Giro Iuliano

Program Overview

- Improve Integration to EMS/DMS/SCADA
- Develop Customer Functional Requirements
- Convene Vendor Working Groups
 - ABB, OSII, Alstom, GE, Siemens...
- Collaborative Effort Will Lead to Success



Top Three Priorities

- Develop Connectors to All Major EMS, DMS, and GMS
 - ABB, Alstom, GE, Schneider, OSII, Siemens, ...
 - Enlist our customers to join Working Group
 - Working Group develops Functional Requirements
 - Working Group & Vendor Collaborative
- Utilize Connector Framework to drive adoption of AF/EF
 - Early Adopters of Connectors will help shape the direction
- Working Group/Early Adopters will help
 - Secure up-front commitments for campaigns & events
 - Leverage references & testimonials to drive additional sales

Next steps

How to participate

- Go to PI Square to volunteer: Add Comment
 - PI Square> Industry Groups>Transmission & Distribution
 - <https://pisquare.osisoft.com/docs/DOC-2156>
- 30 Minute Call
- Align all vendor participants
- Work with EMS/DMS/SCADA vendor
- Complete Functional requirement.

OSIsoft T&D working group for next generation PI Connectors EMS/DMS/SCADA

Created by Jarita Sisro on Apr 1, 2016 6:09 PM. Last modified by Jarita Sisro on Apr 4, 2016 1:44 AM.

OSIsoft is committed in improving the data integration between your PI System and EMS/DMS/SCADA systems.

Specifically, we are looking for your help to define the functional requirements for improving the data integration for your critical systems. We would like start with a 30 minute, one-on-one conversation to understand how you accomplish connectivity and manage integration today, as well as collect your initial suggestions on functional improvements.

Once we have received sufficient input from individual companies, we will convene a system-specific (e.g. ABB, OSI, GE, Alstom etc.) working group for the collective review of the functional requirements document. We have already begun talking with many of the EMS/DMS/ SCADA vendors and are anticipating a collaborative effort from all parties to drive success.

We would like to complete our preliminary interviews over the next few weeks and need your support.

We appreciate your assistance and look forward to working with you to help us develop the next generation of PI Connectors.

Please add a comment and tell us what your current EMS/DMS/SCADA is for the Working Group.

20 Views Categories Tags (edit): ems & dms & mms, volunteer

Average User Rating: ★★★★★ (0 ratings) Your Rating: ★★★★★

ACTIONS

- Following
- Share
- Bookmark
- Like
- Edit
- Manage versions
- Report abuse
- Move
- Create a Copy
- View as PDF
- Mark as Reserved
- Mark as Official
- Mark for Action
- Mark as Success
- Mark as Outdated

Next up! 9:45am – 10:15am



- Using Operational Data to Improve Dispatchers Situational Awareness
- Speakers;
 - **Frank DiCicco** – Sr Analyst, Operations Applications GIS Project Engineer @ PJM
 - **Mark Saiget** – Software Engineer @ Integral GIS

Next up! 10:30am – 11:00am



- The Synchrophasor Grid & Automation Lab and OSISOFT's PI System at UCSD
- Speaker;
 - **Raymond de Callafon**– Raymond de Callafon is a full Professor in the Department of Mechanical and Aerospace Engineering (MAE) at the University of California, San Diego (UCSD).

Next up! 11:15am – 12:00pm



- “Equipment” Failure is Not an Option
- Speaker;
 - **Vince Polsoni** – Manager of the Station Sustainment Department @ PowerStream Inc.

Next up! 2:00pm – 2:30pm



- Improving Network Monitoring with OSIssoft's PI System
- Speaker;
 - **Stefano Bassan** – Control and Automation Engineer @ Radix

Next up! 2:45pm – 3:15pm



- Use Cases of the PI Integrator for Esri ArcGIS in Distribution
- Speaker;
 - **Subbu Sankaran**– Software Component Architect @ San Diego Gas & Electric

Next up! 3:30pm – 4:15pm



- Asset Maintenance and Condition Assessment
- Speaker;
 - **Steven Greulich** – Senior IT Professional @ PSE&G
 - **Angela Rothweiler** – Reliability Centered Maintenance (RCM) Expert @ PSEG&G
 - **Paloma Mejia** – Manager w/ Accenture's Smart Grid Services

Kevin P Walsh

- kwalth@osisoft.com
- Industry Principal – T&D Smart Grids
- OSIssoft, LLC

Questions

Please wait for the **microphone** before asking your questions

State your **name & company**



Please remember to...

Complete the Online Survey
for this session



Download the Conference App for
OSIsoft Users Conference 2016

- View the latest agenda and create your own
- Meet and connect with other attendees

Download on the
App Store

GET IT ON
Google Play

HTML

search **OSISOFT** in the app store



<http://ddut.ch/osisoft>

감사합니다

谢谢

Danke

Merci

Gracias

Thank You

ありがとう

Спасибо

Obrigado

“Hope is not a business strategy. Be relentless”

The background of the entire image is a dark blue gradient. On the left side, there is a faint, stylized illustration of the Golden Gate Bridge. On the right side, there is a faint silhouette of the San Francisco skyline, including the Transamerica Pyramid. The OSIsoft logo is centered at the top in white.

OSIsoft®

USERS CONFERENCE 2016

April 4-8, 2016 | San Francisco

TRANSFORM
YOURWORLD