



PI Coresight: The Fastest, Easiest Way to Visualize PI System Data

Presented by: Tom LeBay – Product Manager



It's too difficult for most users to create and edit displays.

Display creation is fast and easy.





*Make it easier to find the
information I'm looking for.*

**Finding information has
never been more
powerful.**

I want a modern intuitive interface.

I'll never need a user's manual again.

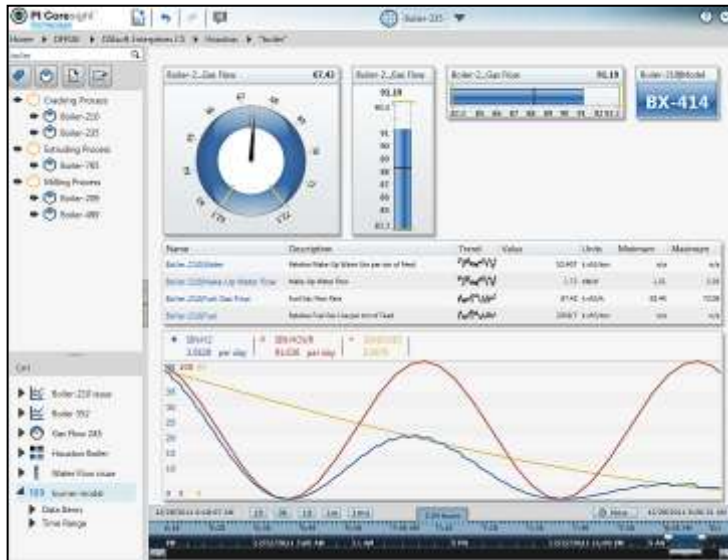




*I want to get to the information
I need from anywhere.*

**Now I can get to my
data from any device.**

What is PI Coresight?



A web-based product for:

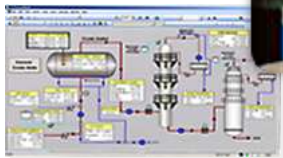
- Ad-hoc analysis
- Quick investigation
- Collaboration
- Rapid deployment

PI Coresight Demonstration

Where Does PI Coresight Fit?



PI Coresight:
*Ad Hoc Analysis &
Collaboration*



PI ProcessBook:
Display authoring and
Process monitoring



PI DataLink:
Reporting and
table based
analytics in
Microsoft Excel



PI WebParts: Composite
applications in
SharePoint



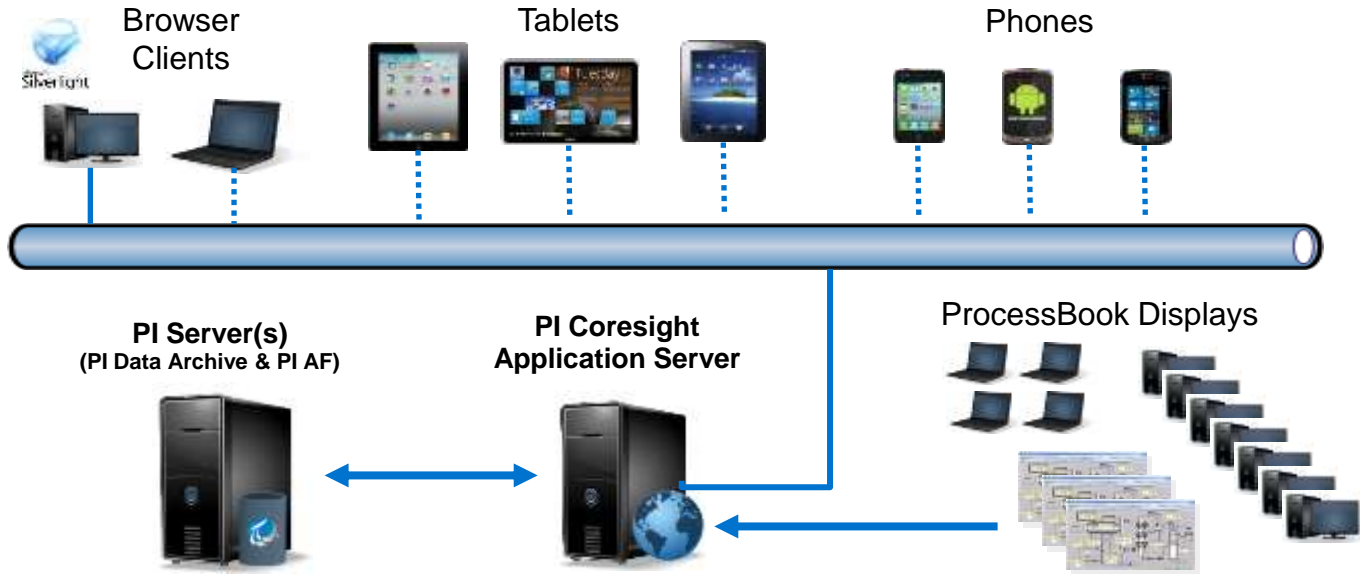
Mobile Vision

Deliver actionable data
when and where it's
needed.



PI Coresight for the iPad

PI Coresight- Future Direction



Some technical details...

- PI Coresight beginning to move from Silverlight to HTML5
 - Homepage and ProcessBook display viewing
 - Then everything else
- PI Coresight app server becoming RESTful
 - Efficient communications for web and mobile apps
 - Designed to enable customers/partners to develop custom apps

PI Coresight Server Requirements

PI Coresight website and PI Coresight Admin website

- Windows Server 2008 R2 or newer
 - Standard or Enterprise Edition
 - Application Server Role with IIS (Internet Information Server) 7.0 required
- Microsoft SQL Server 2008 R2 or newer
 - Standard, Enterprise, Express
 - Can be installed locally or remote
- Hardware Recommendation

# of User	1 to 50	50 to 250	250-500
CPU (Cores)	2	4	8
CPU Speed (GHz)	2	2.5	3
Memory	4	8	16
Disk (GB)	.5	1.5	2.5*

PI Server

- PI Server
 - Windows Integrated Security requires v.3.4.380 and above
- PI AF- recommended for best experience but not required
 - PI AF 2010 R2 (v.2.3) and above
- PI Server 2012 strongly recommended



Thank you

© Copyright 2011 OSIsoft, LLC.

777 Davis St.

San Leandro, CA 94577