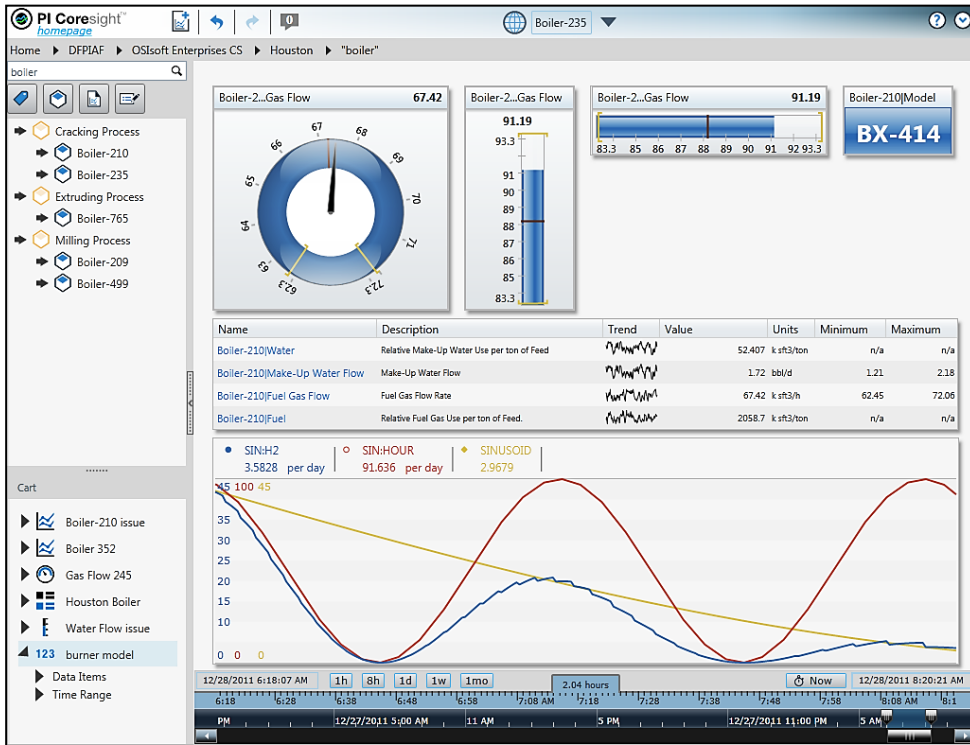




# PI Coresight: The Fastest, Easiest Way to Visualize PI System Data

Presented by: Janelle Minich – Sr. Sales Support Eng.

# What is PI Coresight?



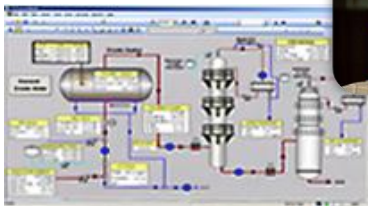
A web-based product for:

- Ad-hoc analysis
- Quick investigation
- Collaboration
- Rapid deployment

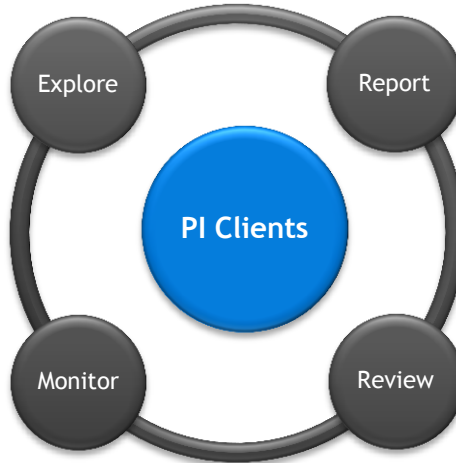
# Where Does PI Coresight Fit?



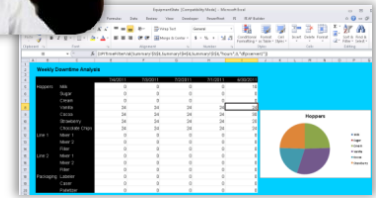
**PI Coresight:**  
*Ad Hoc Analysis &  
Collaboration*



**PI ProcessBook:**  
Display authoring and  
Process monitoring



**PI DataLink:**  
Reporting and table  
based analytics in  
Microsoft Excel



**PI WebParts:** Composite  
applications in SharePoint



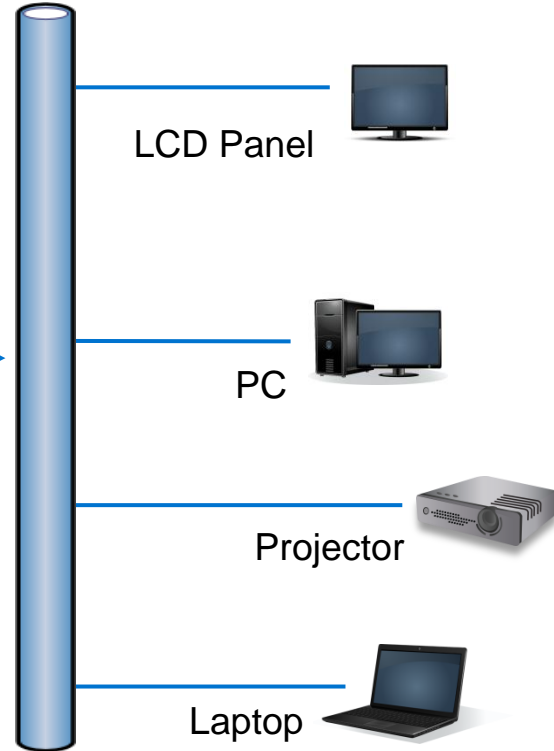
# PI Coresight Architecture

Can be standalone  
or combined on  
another machine

**PI Server**  
(PI Data Archive & PI AF)



**PI Coresight  
Application Server**



# PI Coresight Server Requirements

## PI Coresight website and PI Coresight Admin website

- Windows Server 2008 R2
  - Standard or Enterprise Edition
  - Application Server Role with IIS (Internet Information Server) 7.0 required
- Microsoft SQL Server 2008 R2
  - Standard, Enterprise, Express
  - Can be installed locally or remote
- Hardware Recommendation

# of User	1 to 50	50 to 250	250-500
CPU (Cores)	2	4	8
CPU Speed (GHz)	2	2.5	3
Memory	4	8	16
Disk (GB)	.5	1.5	2.5*

## PI Server

- PI Server
  - Windows Integrated Security requires v.3.4.380 and above
- PI AF- recommended for best experience but not required
  - PI AF 2010 R2 (v.2.3) and above
- PI Server 2010 R3 strongly recommended



# Thank you

© Copyright 2011 OSIsoft, LLC.

777 Davis St.

San Leandro, CA 94577