



OSIsoft Network Operations Center (NOC): First Production PI Server 2012

**Presented by Jay Lakumb, PI Server Product Manager
Tim Drews, Managed PI Software Developer**

PI Server 2012 – Webinar Series

Title	Date
PI Server: the Real-time Data and Events Infrastructure	May 15, 2012
PI Server 2012: Realize the Power of Data	June 5, 2012
OSIsoft NOC (Network Operations Center): the First Production PI Server 2012	July 17, 2012



<http://tinyurl.com/PIServer2012Webinars>



SCALABILITY



PERFORMANCE

PI Server 2012

Realize the Power of **Your** Data



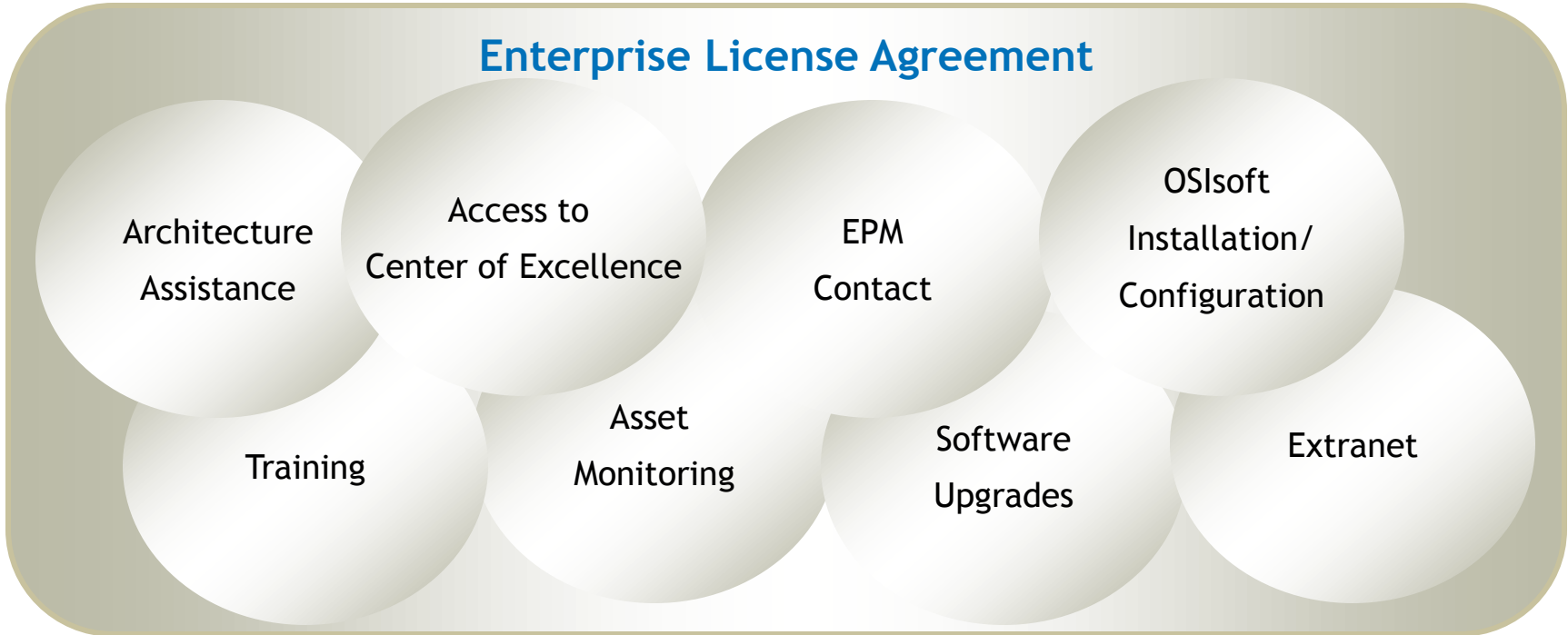
MANAGEABILITY



SECURITY

Under an executed Enterprise License Agreement, customers have access to a cumulative knowledge base built upon 30+ years as an industry leader.

Available services include:



OSISOFT NOC



Powered by Managed PI

What is Managed PI?

- It's a monitoring service only offered to Enterprise Agreement (EA) Customers
- Provides a mechanism to identify PI System component outages in order to keeps systems running
 - Via installed tools on each PI System component
- Proactive case management by our NOC to help remediate PI System incidents quickly with expert support from OSIsoft thru our global support team

OSIsoft NOC

The Network Operating Center (NOC) is an extension of our Support team:

- Global 24x7 follow-the-sun coverage
- Support Centers in:
 - North America, Asia-Pacific, Europe & Middle East
 - Dedicated NOC Support Engineers 24 hours a day, 7 days a week
- 65+ Support Engineers located in 8 global offices

Scope of Managed PI NOC Monitoring

- 70 Enterprise Customers with Active Monitoring – Many are large global customers
- 871+ Monitored PI Systems
- 275+ PI HA Collectives
- 2300+ Monitored Machines
- 12000+ Monitored Interface Instances
- Accounts for 15+% of OSIsoft Support Cases Daily

OSISOFT NOC ECOSYSTEM

PI Server 2012

- 1.3 Million Tags and growing @ ~30,000 tags per month
- 118 Archives, 3GB Each
- 350,000 points added last year
- Over 1.5TB of data and growing and that's just 1 year's data!
- Single PI Server 2012 Collective

PI AF 2010 R2

- Elements and Attributes created automatically
- Integrated with OSISOFT's business systems
- 182,000 Elements

Custom Analysis Engine

- 1000's of health calculations every 5 seconds for every managed endpoint
- Heavy event update load on PI Server

BI Integration

- SQL Reporting Services
- Data Warehouse
- Custom Dashboards and Reports
- SharePoint Integration
- 3rd Party Call System Integration

100% Virtualized

NOC INFRASTRUCTURE

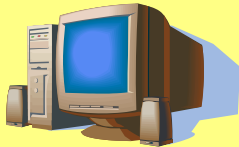
Data Acquisition Tier



Web Services

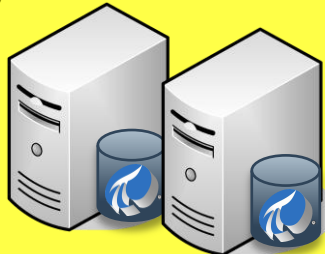


mPI Interfaces



Managed PI Client

Data Tier



PI Server Collective

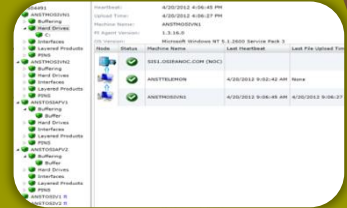


PI Asset Framework

Analysis & Visualization Tier



NOC Analysis Engine



NOC User Interface

PI SERVER 2012 IN THE NOC

- PI Server 2012 eliminated need to scale out data tier across additional nodes
 - Prevented potential increase in maintenance
 - Increased scalability
 - Increased reliability
- Upgraded from PI Server 2010 R3 in minutes
 - Rolling HA upgrade, with **Zero Downtime**
- Running PI Server 2012
 - staging for 5+ months
 - **production for 4+ month**
- Reviewing performance and operation with PI Server group on a weekly basis

PI Server 2012 – Call to Action

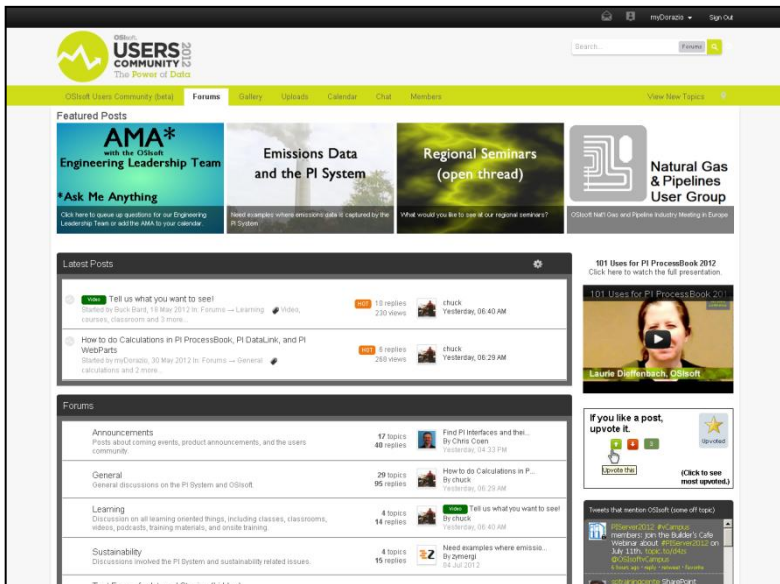
- PI Server 2012 RC0
 - Download from <http://techsupport.osisoft.com>
- Final release in Q3!

The New OSIsoft Users Community

Continue the Conversations

you started at our seminars and conferences

- It is a Forum where
 - Customers, partners, and employees share ideas and opinions;
 - You can talk directly to our designers and decision makers.
- It is an Open Community
 - No login required for viewing content;
 - To post, register directly or
 - Use Facebook, Twitter, Windows Live, or Google accounts



<http://community.OSIsoft.com>



@PIServer2012

Jay Lakumb

jlakumb@osisoft.com

Product Manager
OSIsoft, LLC

Tim Drews

tdrews@osisoft.com

Software Developer
OSIsoft, LLC



THANK YOU

Brought to you by  **OSIsoft.**

© Copyright 2012 OSIsoft, LLC.