



What's New in PI System 2010

Jon Peterson, VP Marketing, OSIsoft
John Baier, Director Product Management, OSIsoft

August 11, 2010

Empowering Business in Real-time.

© Copyright 2010, OSIsoft LLC. All rights Reserved.

Experience



COLLECT



HISTORIZE



FIND



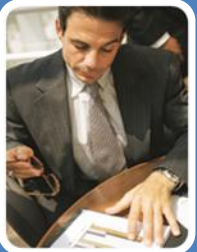
ANALYZE



DELIVER



VISUALIZE



PI Clients

- PI WebParts 2010
- PI DataLink 2010
- PI for Office 2010

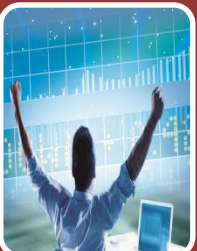
Business User Experience



PI Data Access

- PI OLEDB Enterprise 2010
- PI Web Services 2010
- PI JDBC 2010

Business Collaboration Platform

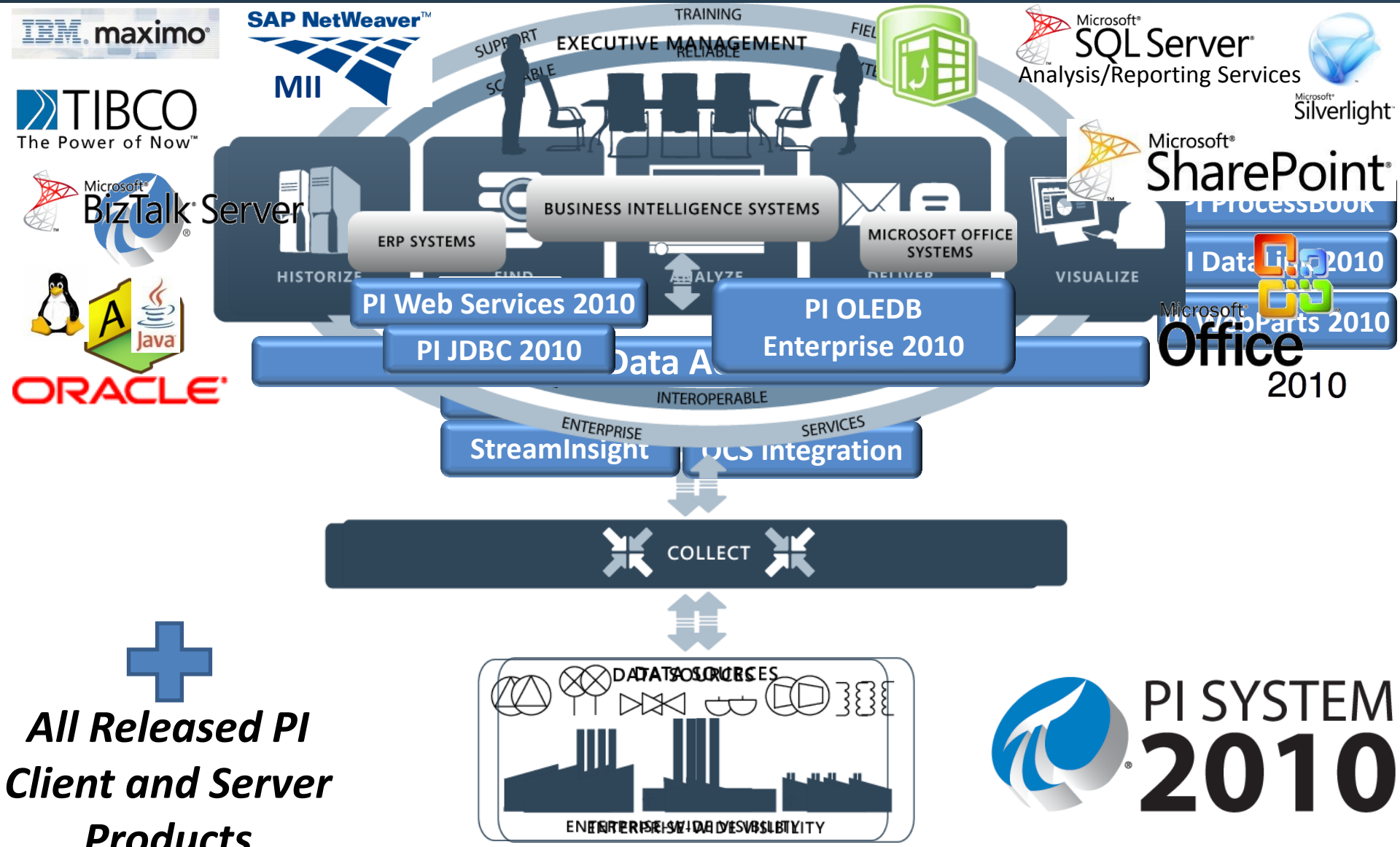


PI Server

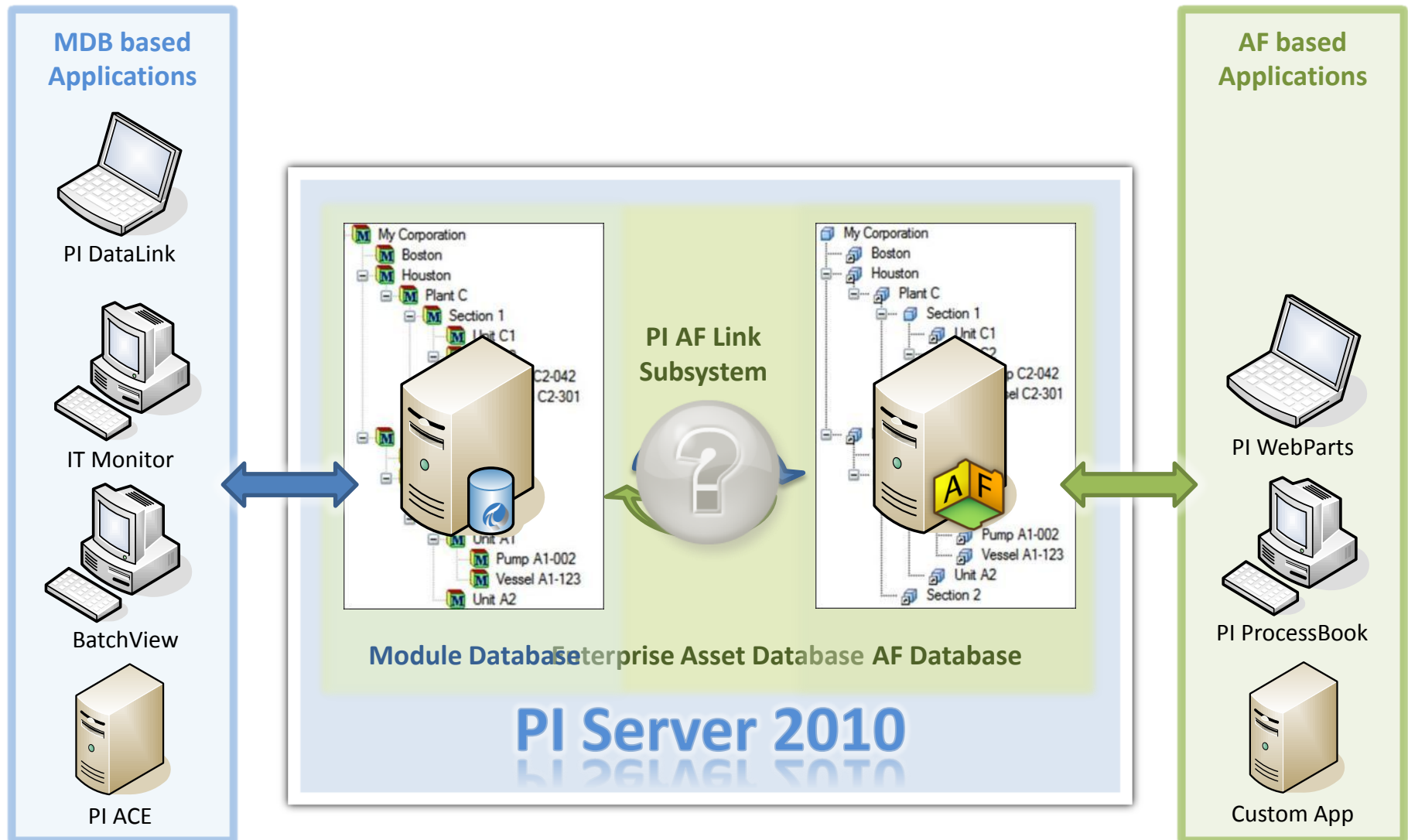
- PI Server 2010
- Assets and Tags

Data Infrastructure and BI Platform





Mixed Applications





Scalability

Templates,
Models, etc.

Millions of
assets



Usability

Unified Data
Access

Search

Flexible
security



Reliability

HA
Solutions

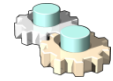
Windows
Security

Preserve Your Investment: Displays, Calcs, Apps

- Multiple Schedulers



ACE Scheduler 1



ACE Scheduler N

- Performance Improvements
 - Components re-written in .NET

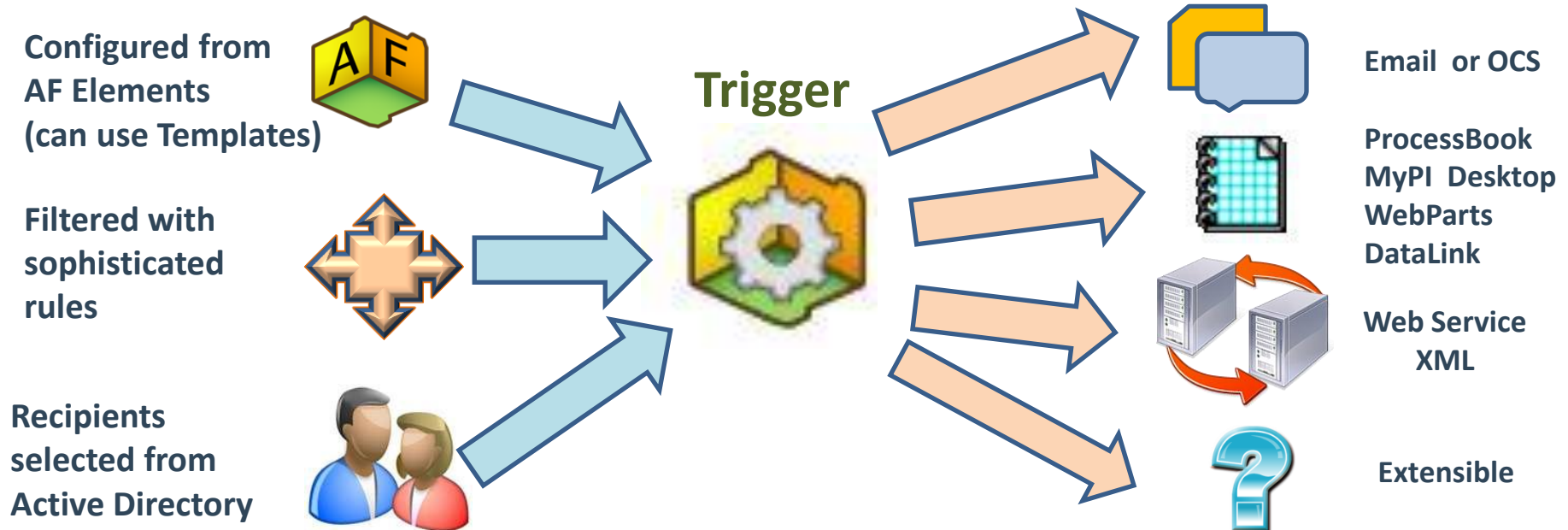


- Visual Studio 2010 support



- Native 64-bit operating system support





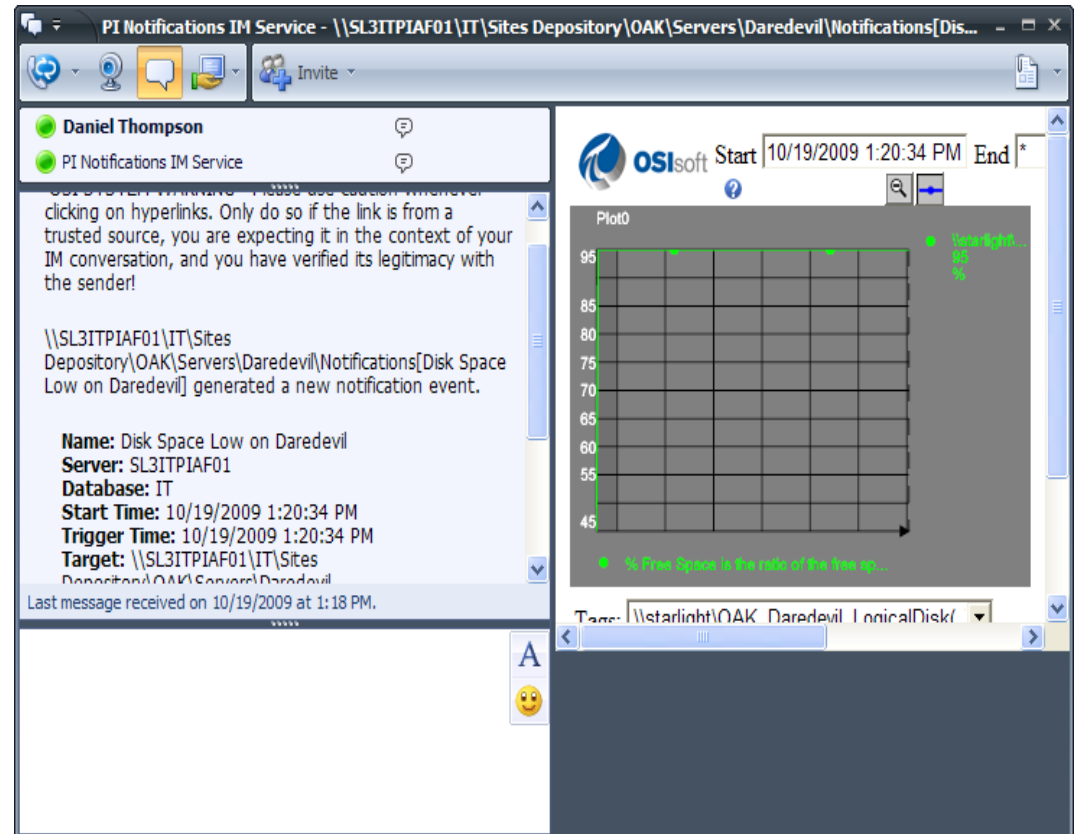
Features

- Templates
- Custom Content
- Acknowledgement and Escalation

Delivery Channels

- User can create their own
- OSIsoft vCampus – XML & Skype

- Native Delivery Channel
- Supports presence and Instant Messaging (IM)
- Applications for phones
 - Windows Mobile
 - BlackBerry®
 - iPhone



PI Data Access: The Products



SQL Family

Web Services

OPC Servers

OSIsoft SDKs



Asset Information / Metadata

Notifications

Analytics

Relational / Non Time Series Data



PI Server



PI Server Collective

Time Series Data

PI Data Access: The 2010 Wave



Microsoft®
BizTalk® Server



Microsoft®
SQL Server®
Analysis/Reporting Services



Microsoft®
SharePoint®



PI JDBC
2010

PI Web
Services 2010

PI OLEDB
Enterprise 2010

PI OPC DA/HDA
Server 2010

OSIsoft SDKs



Asset Information / Metadata

Notifications

Analytics

Relational / Non Time Series Data



PI Server



PI Server Collective

Time Series Data

- Expose the PI Server as a relational database
- Integrate with SQL-friendly tools



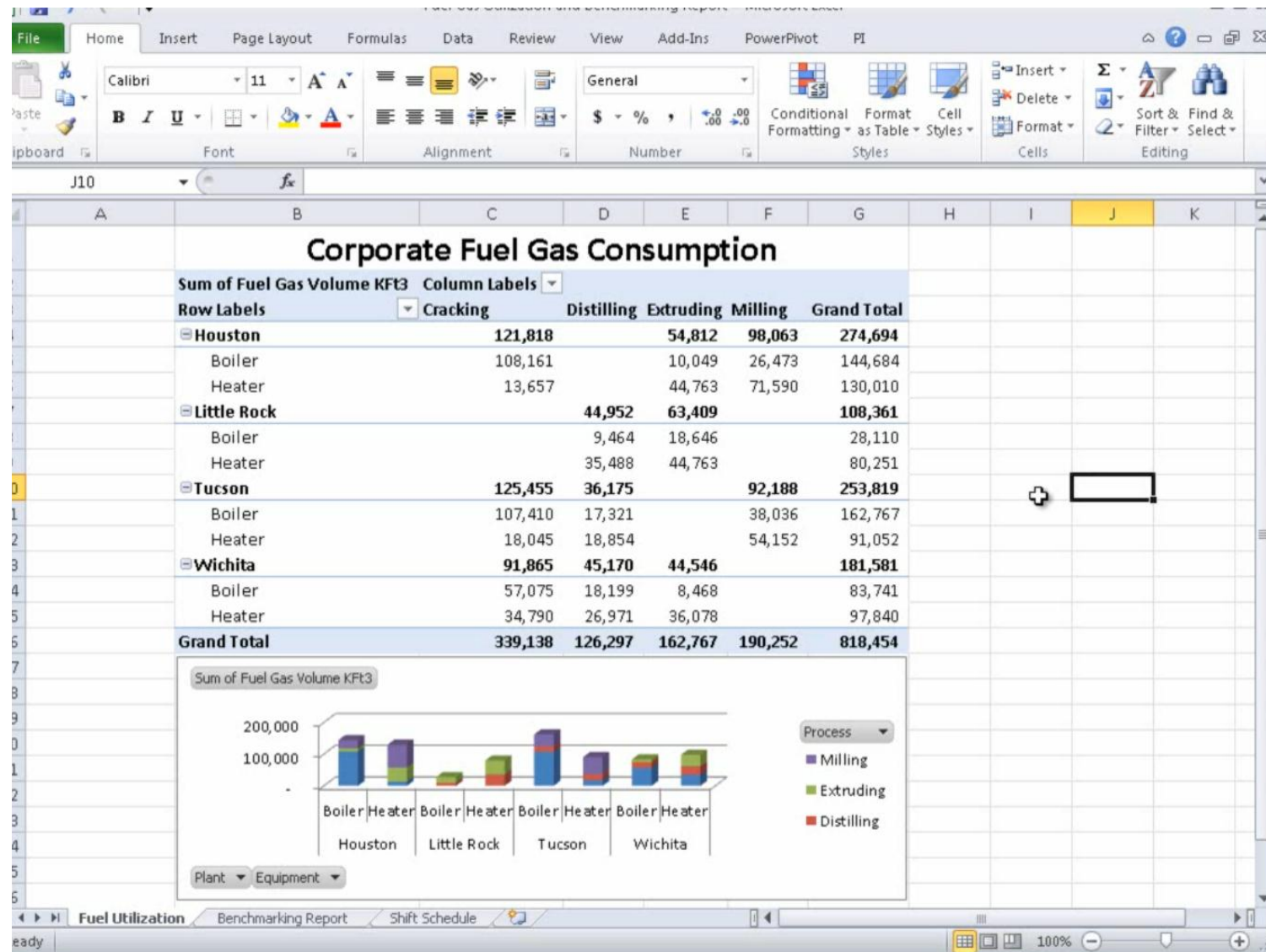
SQL Family - What's New



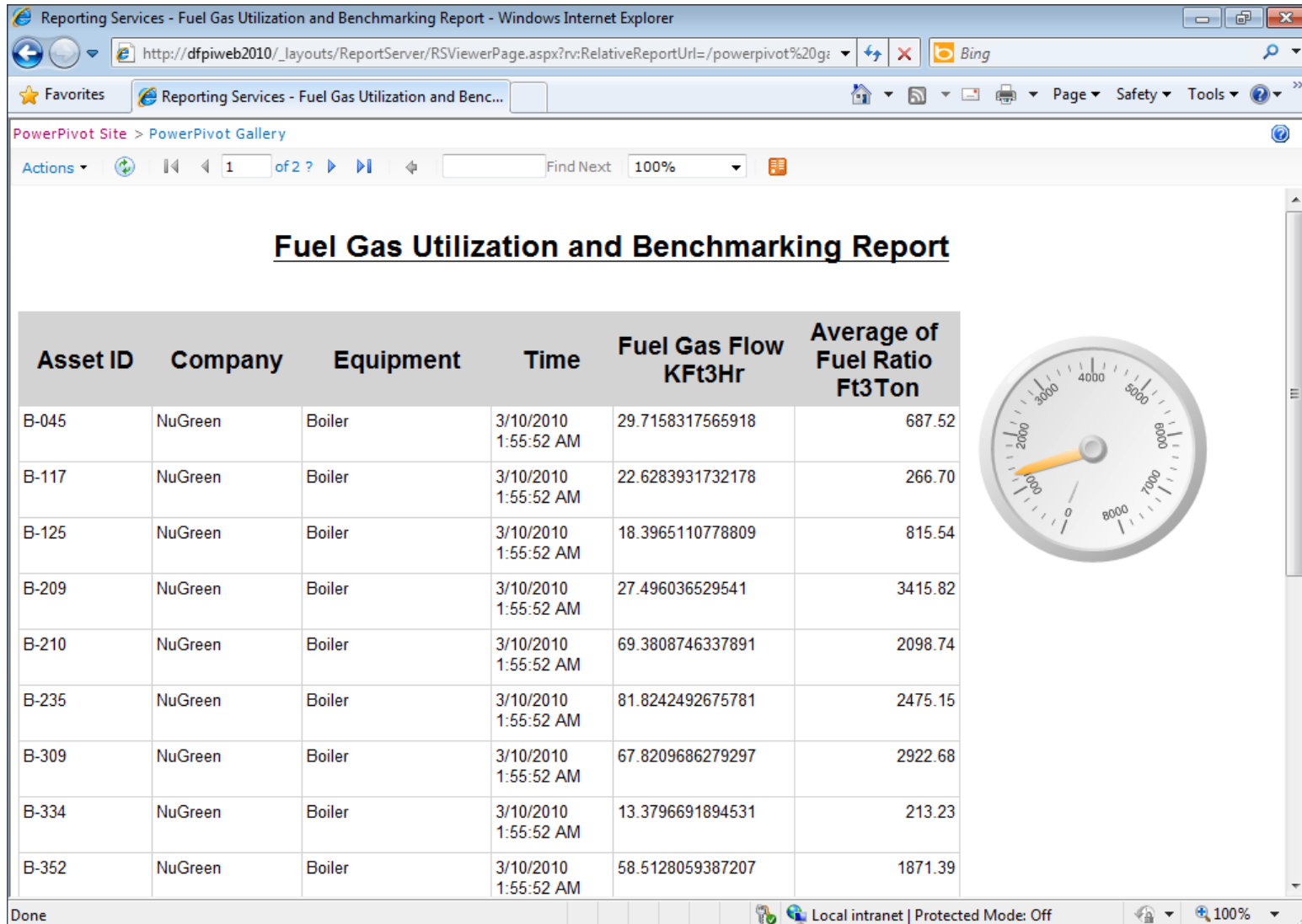
- PI OLEDB 64-bit
- PI JDBC 2010
 - Bring data to the Java world
- PI OLEDB Enterprise 2010
 - Brand new product
 - Access to AF via SQL
 - Supports custom applications and many integration scenarios
 - PI WebParts
 - PowerPivot in Excel
 - SQL Server (Reporting/Analysis Services)



PI OLEDB Enterprise in Microsoft PowerPivot



PI OLEDB Enterprise in SQL Server Reporting Services

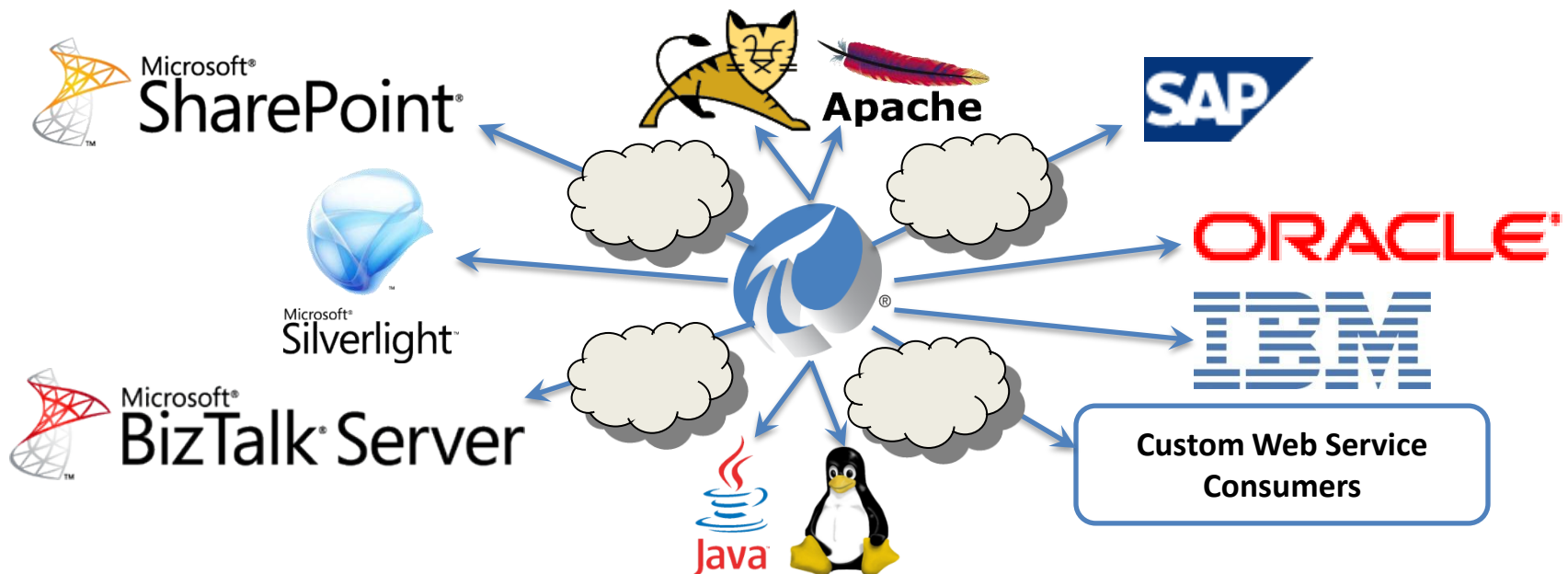


- Talk to PI via well-known, popular standards
- Integrate with 100's of existing OPC Clients
 - Process optimization engines
 - Process analysis, calculations
 - Visualization/reporting
- PI OPC DA/HDA Server 2010
 - Certified for Compliance

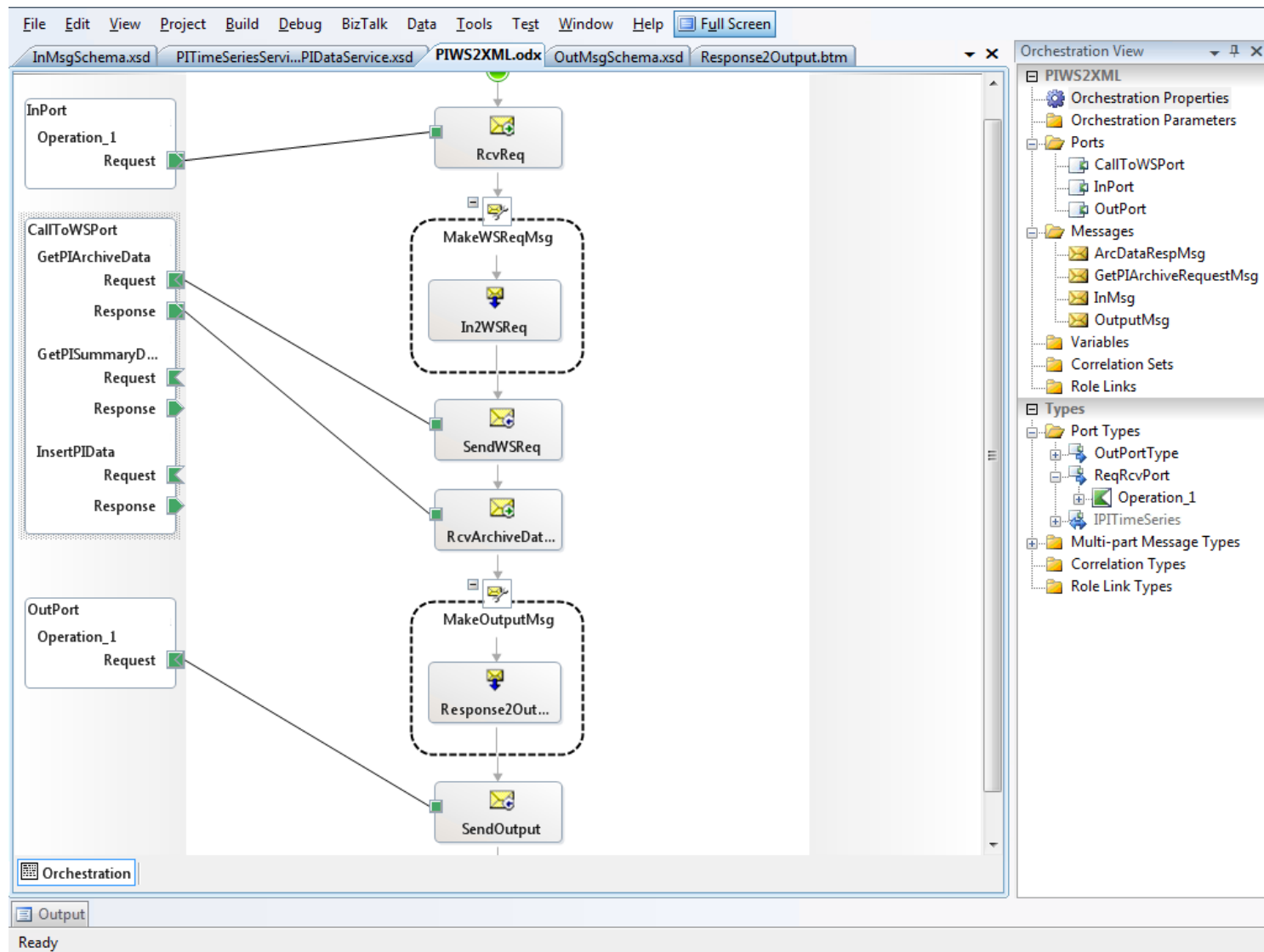


- Brand new product
- Provides access to **PI and AF** data through standard **web service** technologies
 - Many code-free integration scenarios
 - Custom applications
- Facilitates data access over secure and distributed environments
 - Nothing required on the client machine
 - Service-oriented architecture (SOA)

- Web-based visualization
- Integration with business systems
- Non-Windows environments



PI Web Services in Microsoft BizTalk® (orchestration)



NuGreen - Notification Limit Change - Windows Internet Explorer

http://dfpiweb2010/NuGreen/SitePages/Notification%20Limit%20Change.aspx

Site Actions | Browse | Page | Forms | Edit | Steve Pilon

Submit | Save | Save As | Close | Paste | Copy | Cut | Print Preview | Current View: | Update | Update

Commit | Clipboard | Views | Update

- Home
- Engineering
- Manufacturing
- Help

Libraries

- Notification Limit Change
- Notification Limit Change Form

News

Offices

Departments

Search

Help

Manufacturing

- Houston Plant
- Little Rock Plant
- Tucson Plant
- Wichita Plant

Notification Limit Change

Use this form to change notification limit values.

Please enter the effective date for changes:

Target Date: 4/15/2010 8:49:09 AM

Please select the appropriate plant:

Heater:

- Heater 395: FG Limit
- Heater 393: FG Limit
- Heater 148: FG Limit

Please enter a new value Notification trigger limit:

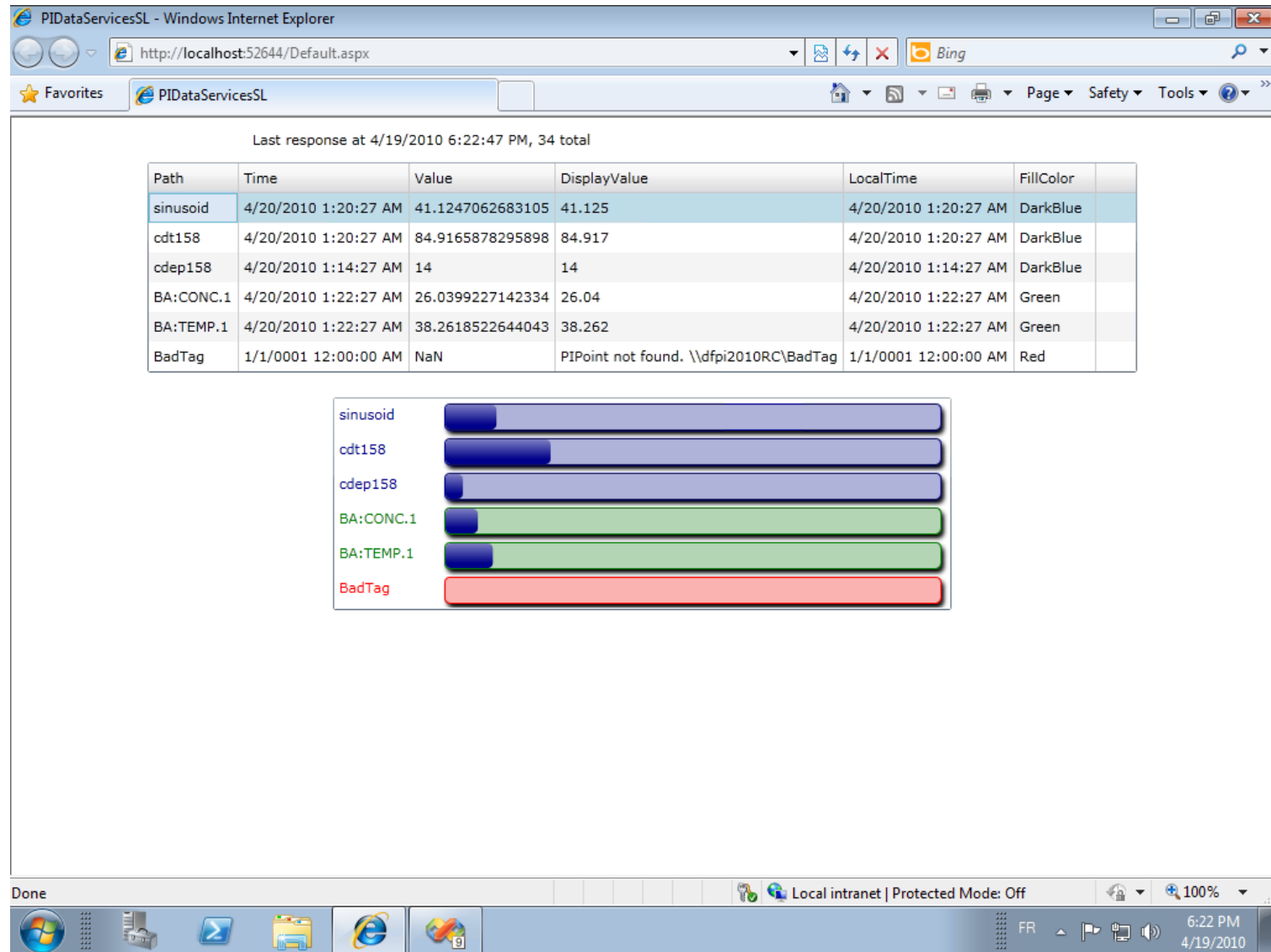
Trigger Limit: 15

Please add any comments to support the change:

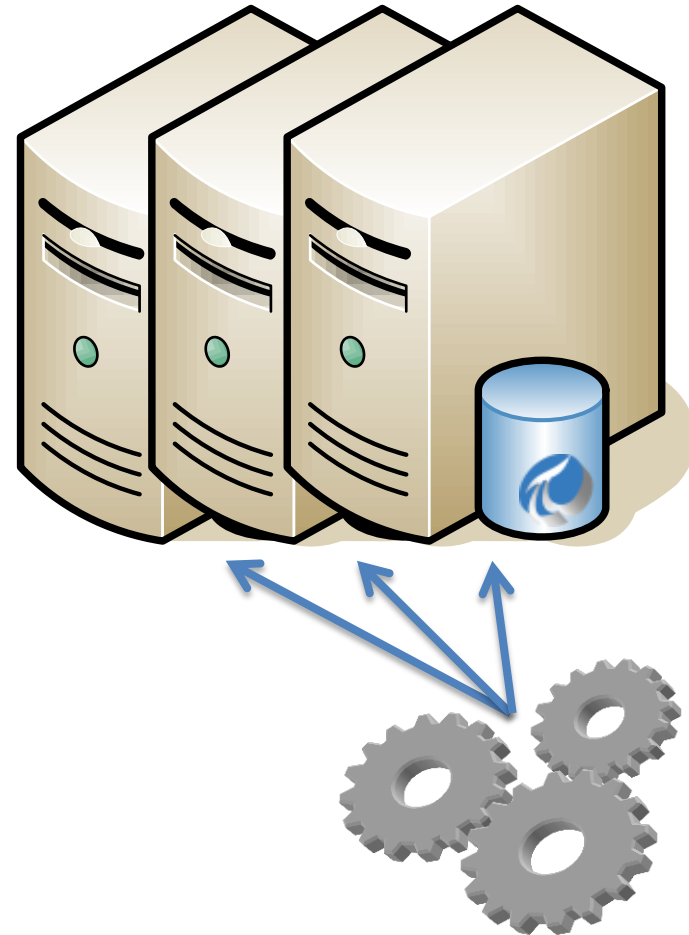
Comments:

Change setpoint

Local intranet | Protected Mode: Off | 100%

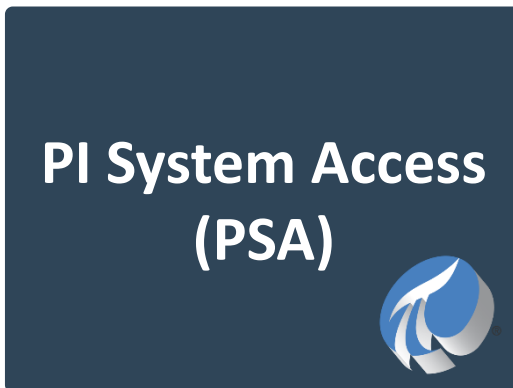


- Object-oriented SDKs
 - PI Server, AF Server, Notifications
- Custom applications
 - Visualization
 - Configuration
 - Calculations
 - Analyses
 - Reports
- Windows Integrated Security
 - PI SDK 1.3.6
- 64-bit
 - PI SDK 1.3.8
 - AF SDK 2.1





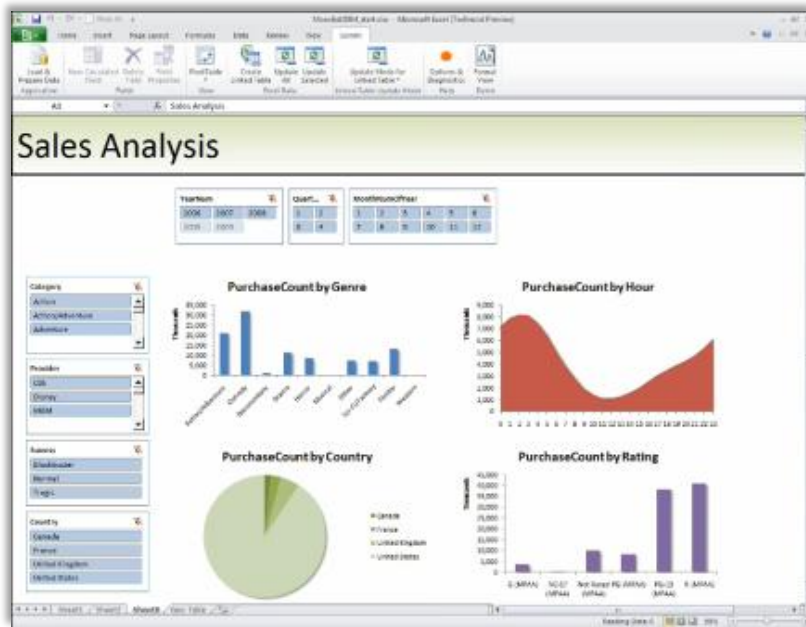
```
ATimeRange tr = new ATimeRange(new ATime(tex  
AFValues vals = _afDB.Elements["Pump123"].Attri  
  
lstValues.Items.Clear();  
foreach(AFValue val in vals)  
{  
  
    lstValues.Items.Add(val.Value.ToString() +  
}
```



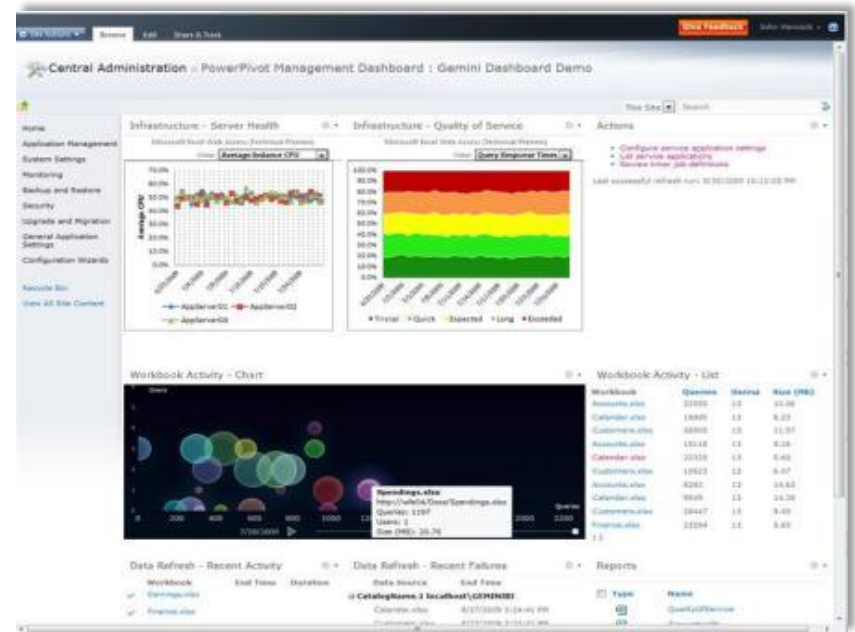
Managed Self Service BI



PowerPivot for Excel



PowerPivot for SharePoint



Microsoft®
Office 2010

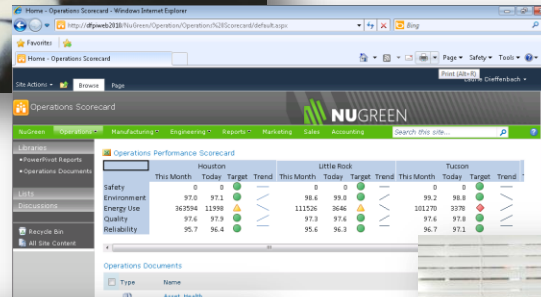
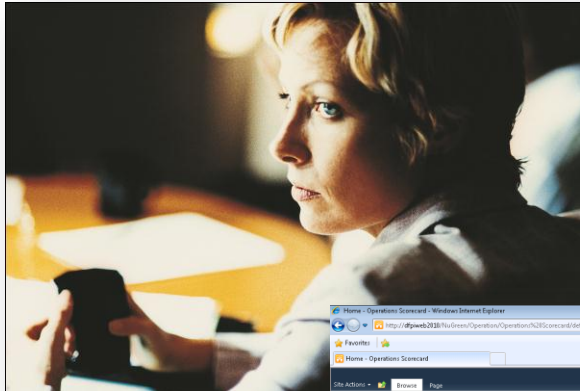
Microsoft®
SQL Server®
Microsoft®
SharePoint®



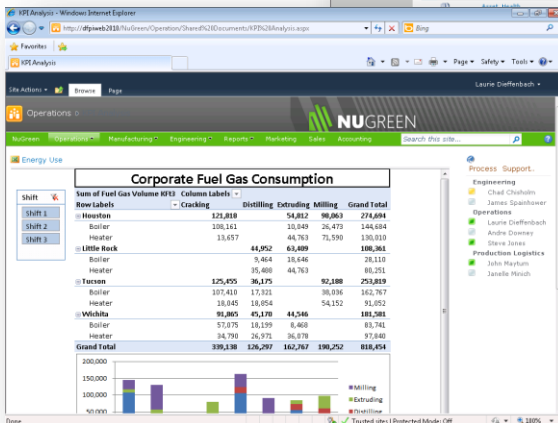
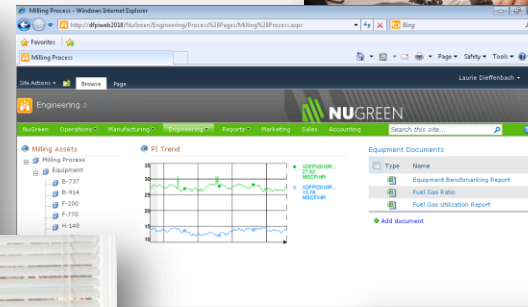
Role-based Dashboarding



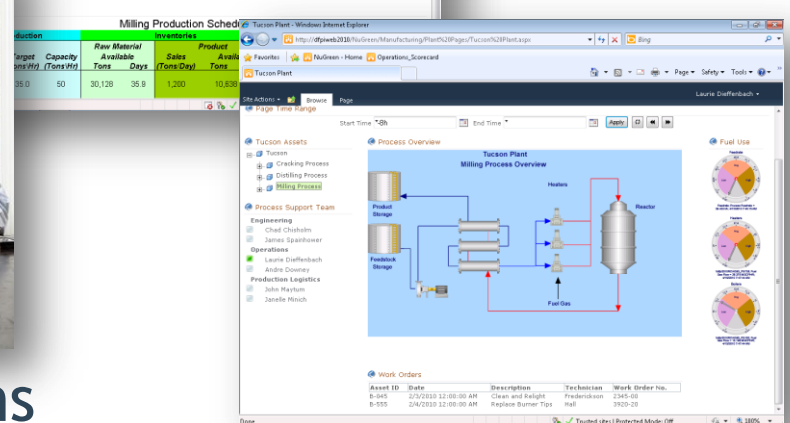
Management

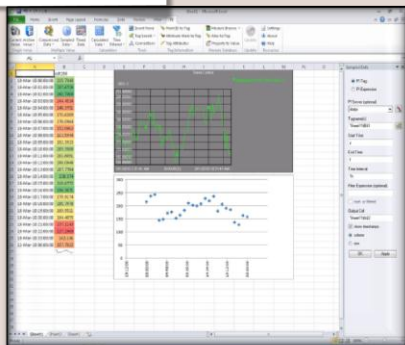


Information Worker

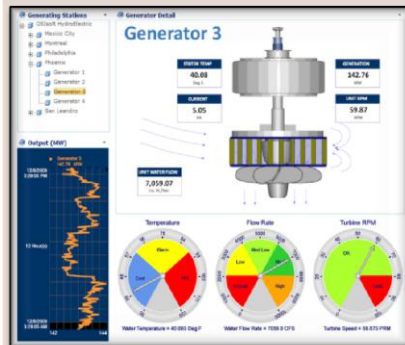


Operations





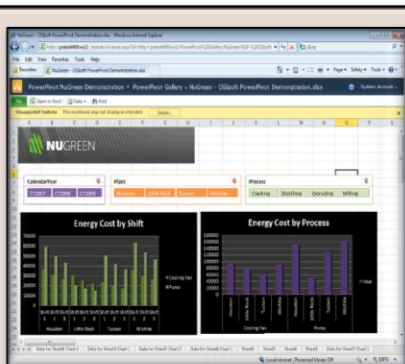
PI DataLink for
Excel 2010



PI WebParts for
SharePoint 2010



PI and PowerPivot
for
Excel 2010

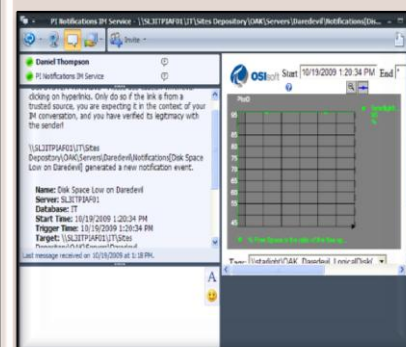


PI and PowerPivot
for
SharePoint 2010

PI OLEDB
Enterprise 2010

PI Web Services
2010

PI Data Access
Technologies



PI Notifications 1.1
OCS R2 Delivery Channel

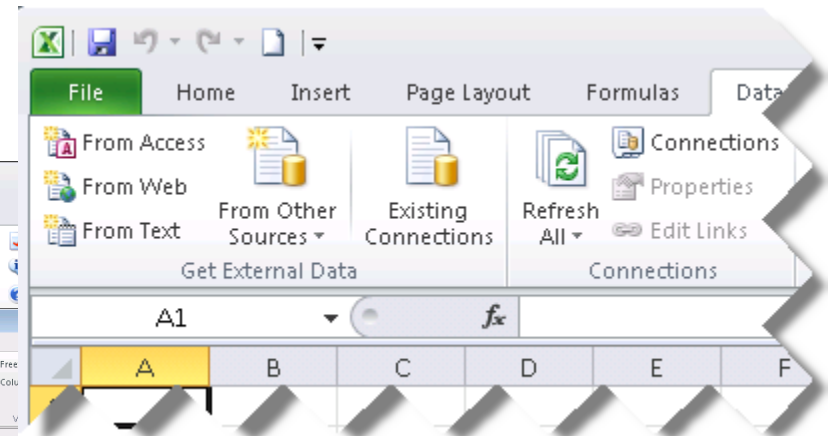
Content Creator Roles



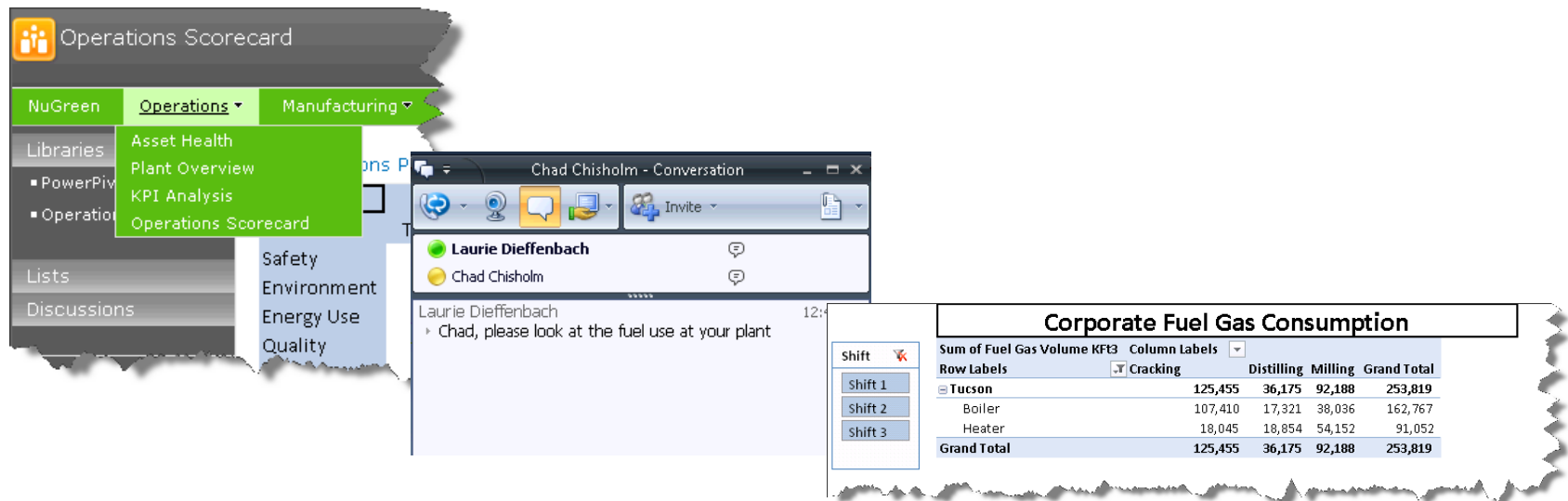
- Use different data sources
- Create scorecards
- Create multidimensional reports
- Publish to SharePoint

	Houston				Little Rock				Tucson				Wichita			
	This Month	Today	Target	Trend	This Month	Today	Target	Trend	This Month	Today	Target	Trend	This Month	Today	Target	Trend
Safety	0	0			0	0			0	0			0	0		
Environment	97.0	97.1			98.6	99.0			99.2	98.8			99.2	98.7		
Energy Use	358035	11761			108112	3675			99752	3426			0	0		
Quality	97.6	97.9			97.3	97.6			97.6	97.8			96.1	96.4		
Reliability	95.7	96.4			95.6	96.3			96.7	97.1			94.5	95.4		

[Asset ID]	Asset ID	Company	Plant	Process	Equipment	Time	Fuel Gas Flow KPI3Hr	Fuel Ratio F43Ton	Fuel Gas
H-395	H-395	NuGreen	Tucson	Milling	Heater	3/6/2010	13.6020126342773	338.006499851552	1
H-395	H-395	NuGreen	Tucson	Milling	Heater	3/6/2010	13.5766296386719	337.359653153093	
H-395	H-395	NuGreen	Tucson	Milling	Heater	3/6/2010	13.5512456893921	336.712812522186	
H-395	H-395	NuGreen	Tucson	Milling	Heater	3/6/2010	13.5258626937866	336.066089237522	
H-395	H-395	NuGreen	Tucson	Milling	Heater	3/6/2010	13.5004787445068	335.419403920529	



- Easy navigation to needed information
- Easy access to expert assistance
- Easy access to previously developed content



The screenshot displays the OSIsoft software interface. On the left, a navigation menu includes 'Operations Scorecard', 'NuGreen', 'Operations', 'Manufacturing', 'Libraries', 'PowerPiv', 'Operation', 'Lists', and 'Discussions'. A dropdown menu under 'Operations' shows 'Asset Health', 'Plant Overview', 'KPI Analysis', and 'Operations Scorecard'. A chat window titled 'Chad Chisholm - Conversation' is open, showing a message from Laurie Dieffenbach: 'Chad, please look at the fuel use at your plant'. To the right, a table titled 'Corporate Fuel Gas Consumption' displays data for various shifts and equipment.

Sum of Fuel Gas Volume KFE3	Column Labels	Cracking	Distilling	Milling	Grand Total
Row Labels					
Tucson		125,455	36,175	92,188	253,819
Boiler		107,410	17,321	38,036	162,767
Heater		18,045	18,854	54,152	91,052
Grand Total		125,455	36,175	92,188	253,819

Knowledge Worker Roles



- Access to all needed tools
- Contribute material for use by others
- Resolve problems and prevent recurrence

Equipment Benchmarking: Fuel Gas Efficiency		
Average of Fuel Ratio F3Ton	Column Labels	
Row Labels	Milling	
Borne Engineering		
BK-414	1,683	
Flame-On		
FO-009	322	
Hot Spot		
HS-345	2,439	
Inferno		
I-27	1,283	
I-56	6,456	
KPC, Limited		
KPC-X87	430	
Swift Brothers		
STM-305	878	
STM-900	2,872	
Average of Fuel Ratio F3Ton	2,000	

Notification Limit Change

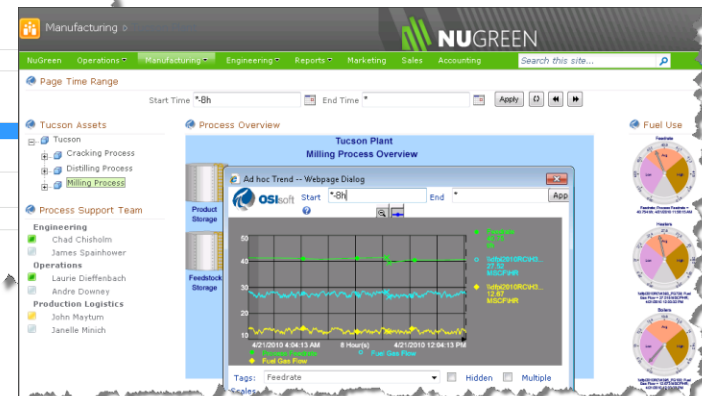
Use this form to change notification limit values.

Please enter the effective date for changes:
Target Date: 4/16/2010 5:52:17 AM

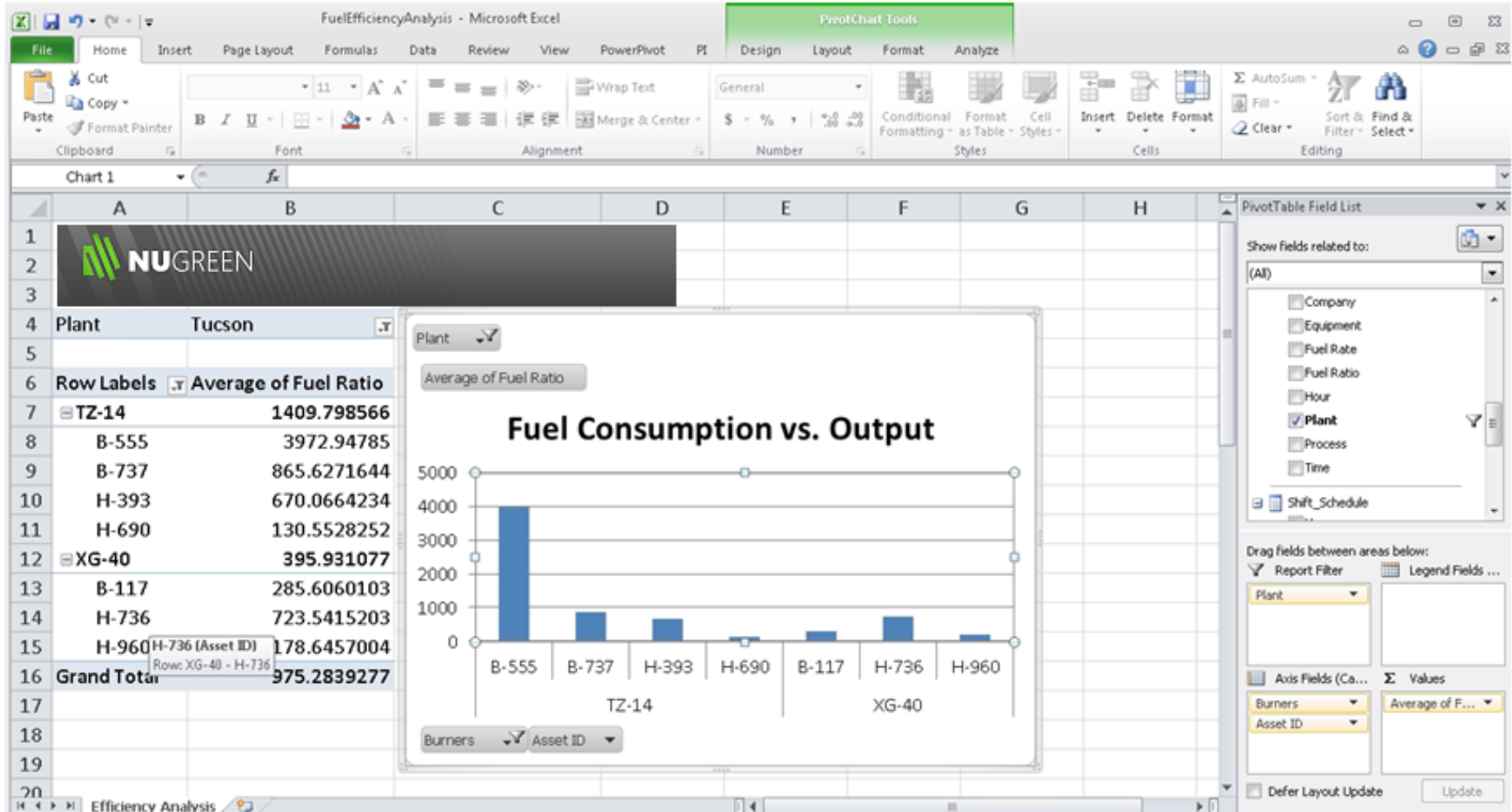
Please select the appropriate unit:
Heater:
Heater 395: FG Limit
Heater 393: FG Limit
Heater 148: FG Limit

Please enter a new value Notification trigger limit:
Trigger Limit:

Change settings



PI DataLink + Excel 2010 + PowerPivot



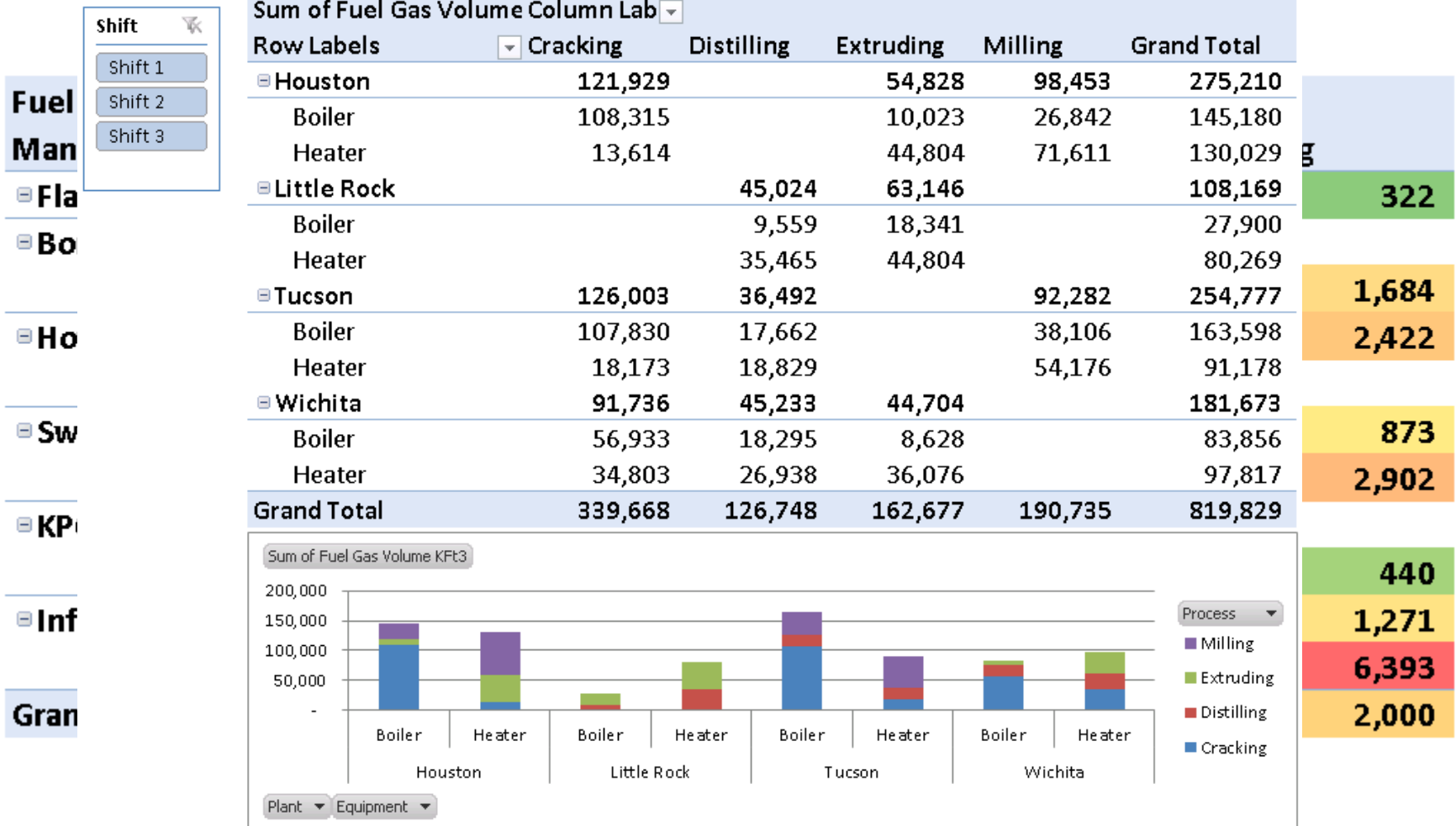
What's New in PI DataLink 2010



- PI DataLink 2010:
 - Supports Microsoft Office 2010 (32-bit)
 - Office 2007 and Office 2003 as well
- PI DataLink Server 2010:
 - Supports SharePoint 2010 (64-bit)
 - Office SharePoint Server 2007 as well
- Both PI DataLink 2010 and PI Data Link Server 2010 support Internationalization and Localization

English, French, German, Spanish, Portuguese, Russian, Simplified Chinese, Japanese, Korean

30 Day Corporate Fuel Gas Consumption



Simple

- ➔ Simple naming and versioning
- ➔ Single PI Server package
- ➔ Aligned release schedule
- ➔ Organize PI System data around assets

Relevant

- ➔ Migration of existing asset definitions
- ➔ Integration with business systems
- ➔ New ways to analyze data

Collaborative

- ➔ Use the tools you already know
- ➔ Business Intelligence for the masses
- ➔ Easily share insights with others

For more information on PI System 2010 don't forget to:

- Visit www.osisoft.com
- Contact your local sales representative
- Email sales@osisoft.com



- September 13th and 14th, 2010
- www.osisoft.com/vCampusLive2010



Thank you

© Copyright 2010 OSIsoft, LLC.
777 Davis St., San Leandro, CA 94577