

Realizing Value From the Data

Presented by

Bhasker Joshi

Microsoft Corporation

bhasker.joshi@microsoft.com



Agenda

- Technology and Trends
- OSIssoft Microsoft Alliance
- Real World Examples

Technologies and Trends

Ubiquitous Sensors and Media
Explosive Data Growth

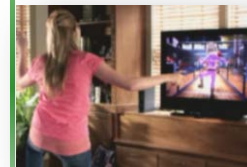
System on a Chip Designs
Powerful Devices

Computer Consumerization
Many Devices World

The Internet of Things
Computers Everywhere

Client + Cloud
New software models

Natural User Interfaces
Moving beyond GUIs



Analyze Closer to the Source AND In the Cloud

Sensor
Data 1

Sensor
Data 2

Sensor
Data 3

Sensor
Data 4

Sensor
Data 5

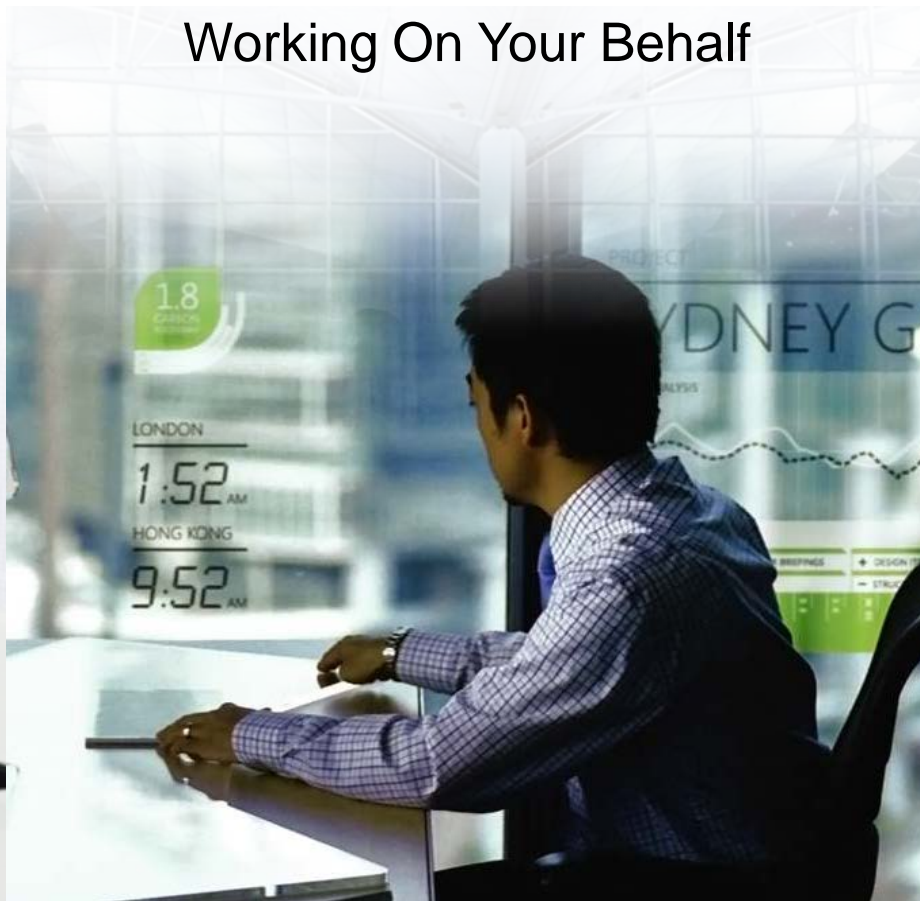


Get Value from “Big Data”

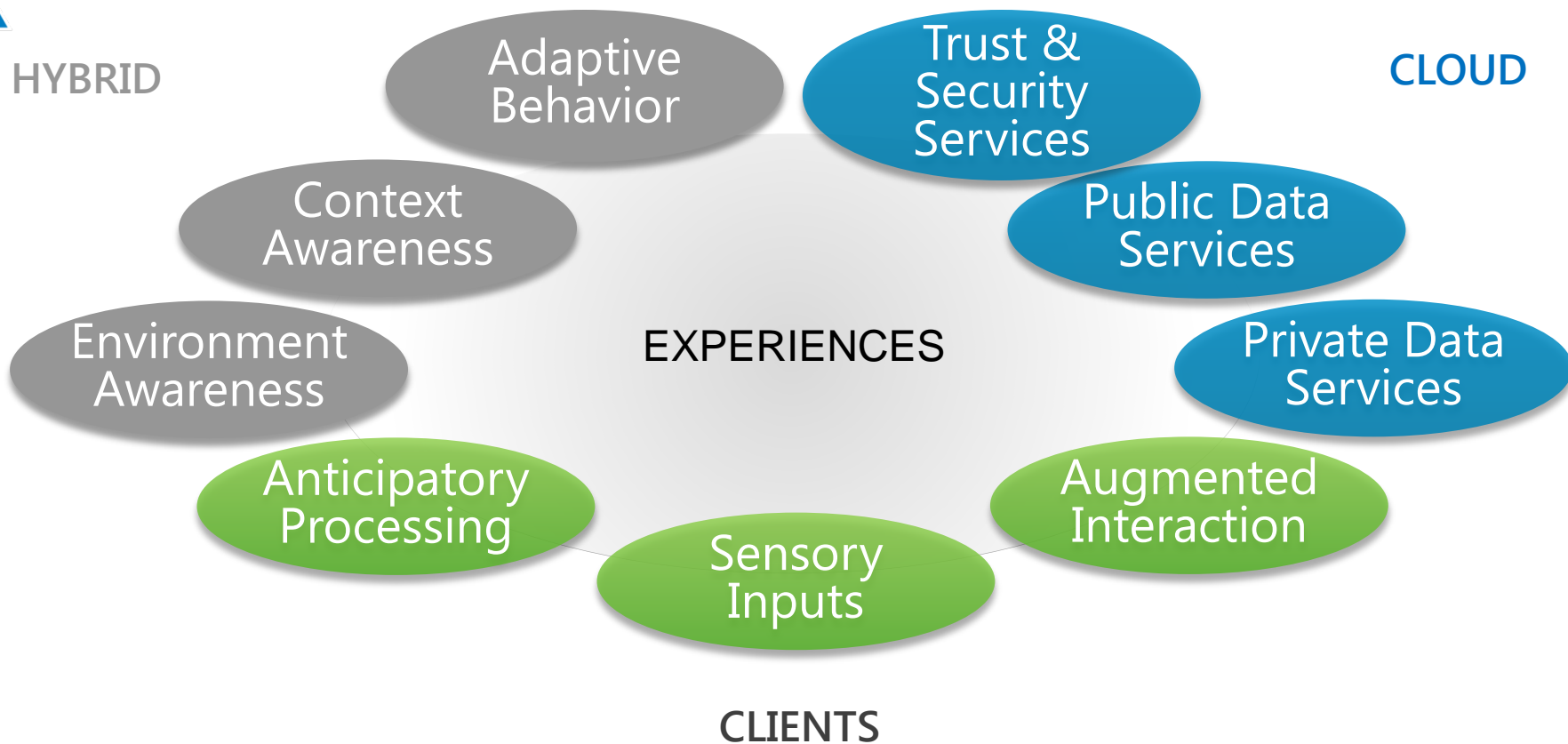
Working At Your Command



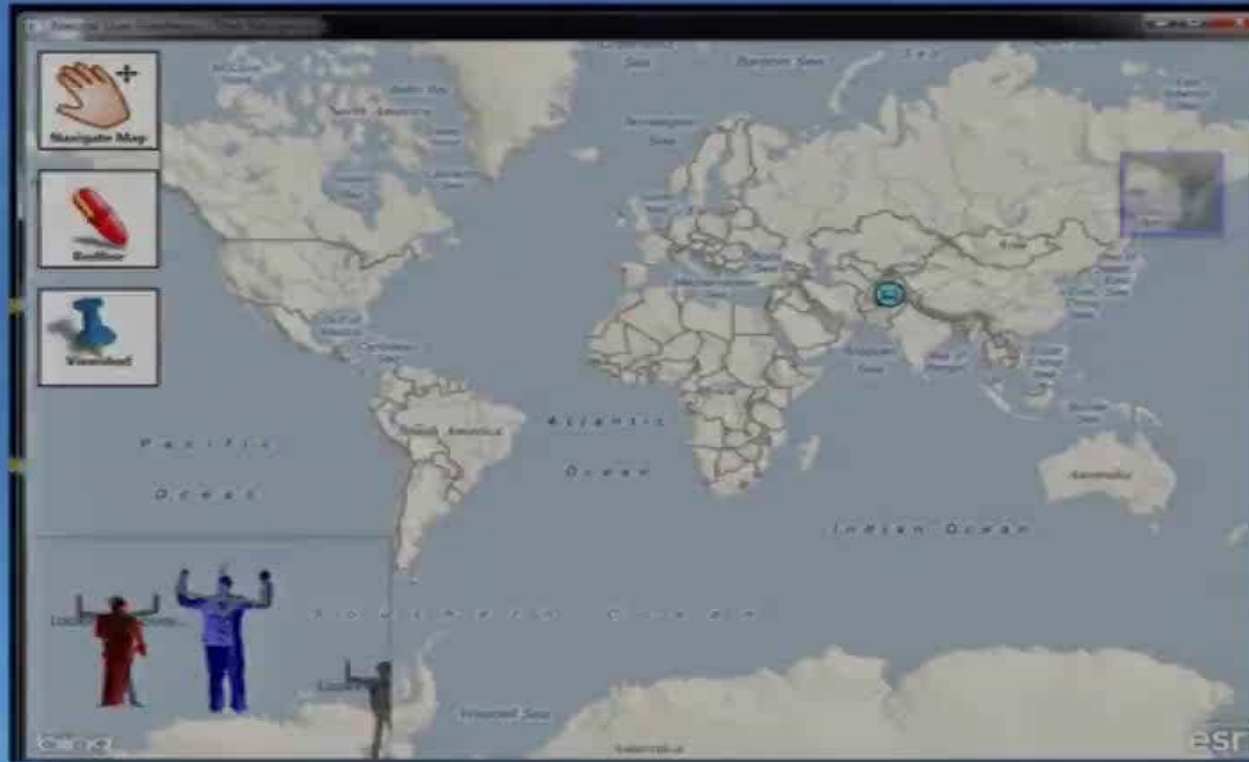
Working On Your Behalf



The Future of Contextually Sensitive Experiences



A more natural user interface...

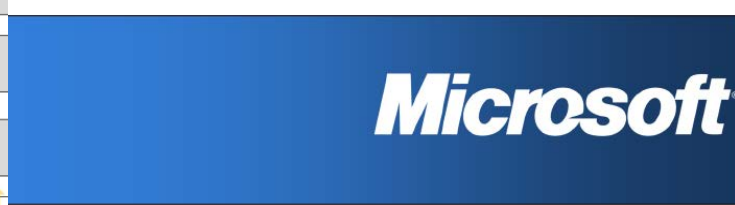
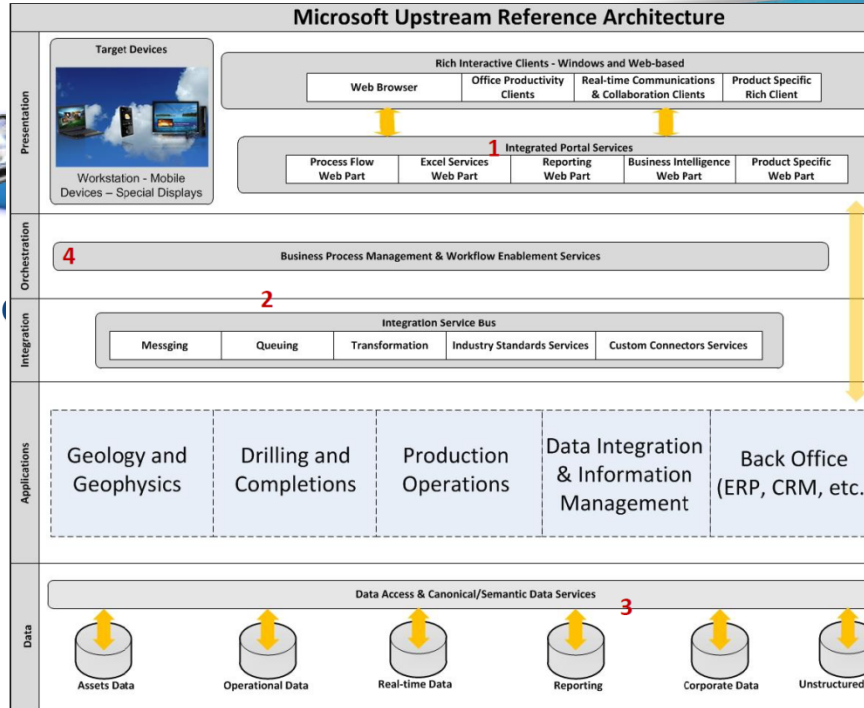




Agenda

- Technology and Trends
- OSIssoft Microsoft Alliance
- Real World Examples

Investments in Manufacturing and Resources



Microsoft Power and Utilities

Smart Energy
Reference Architecture

October 14, 2009

www.Microsoft.com/Utilities

Working with our
product teams to meet
industry needs

Click to download

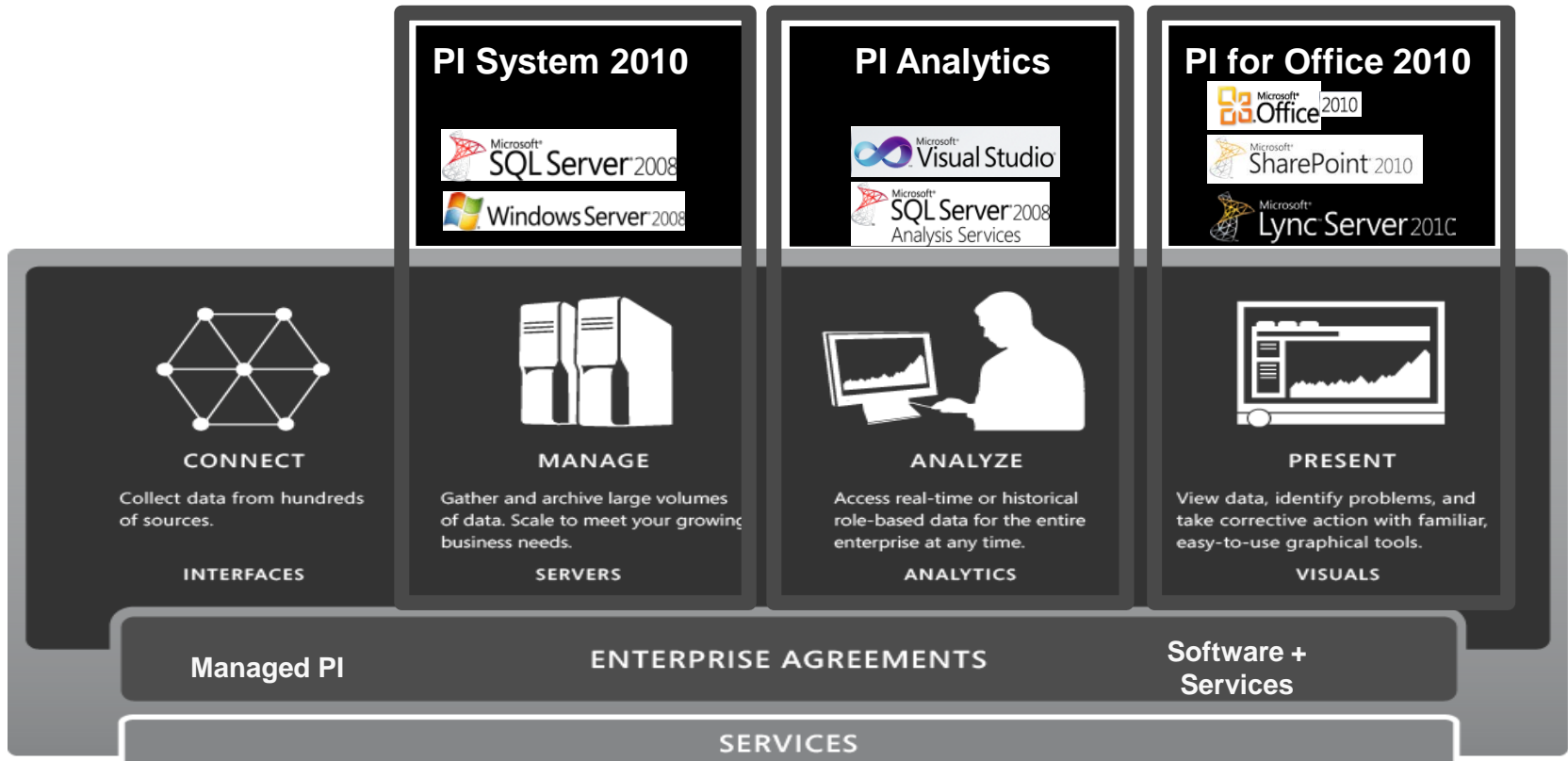


ensive
with our

AGI
lications Group
PC
ION

stry

OSIsoft PI System and Microsoft



PI System and Microsoft StreamInsight

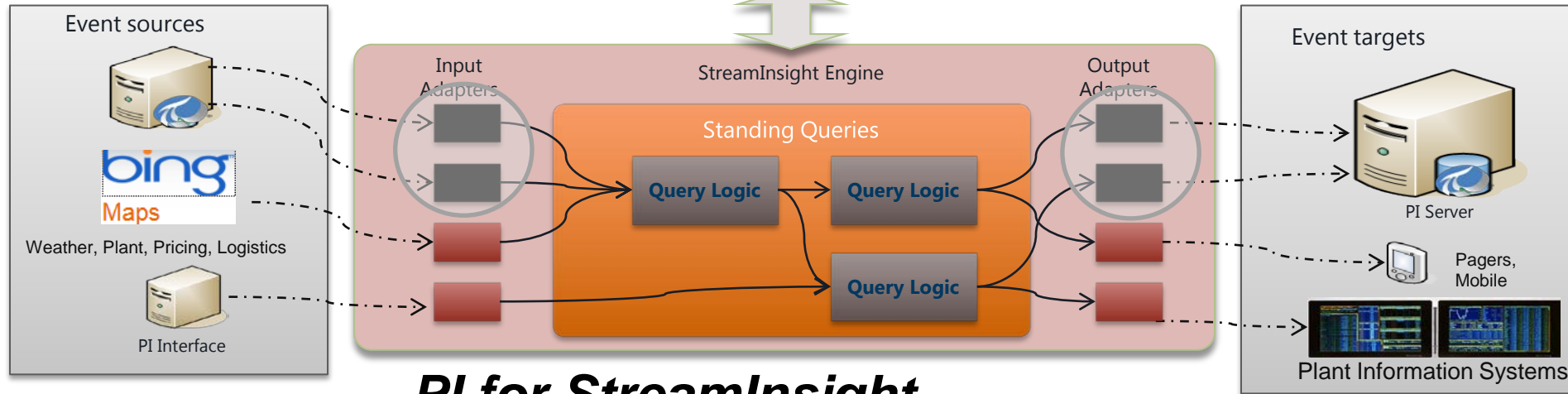


StreamInsight Application Development



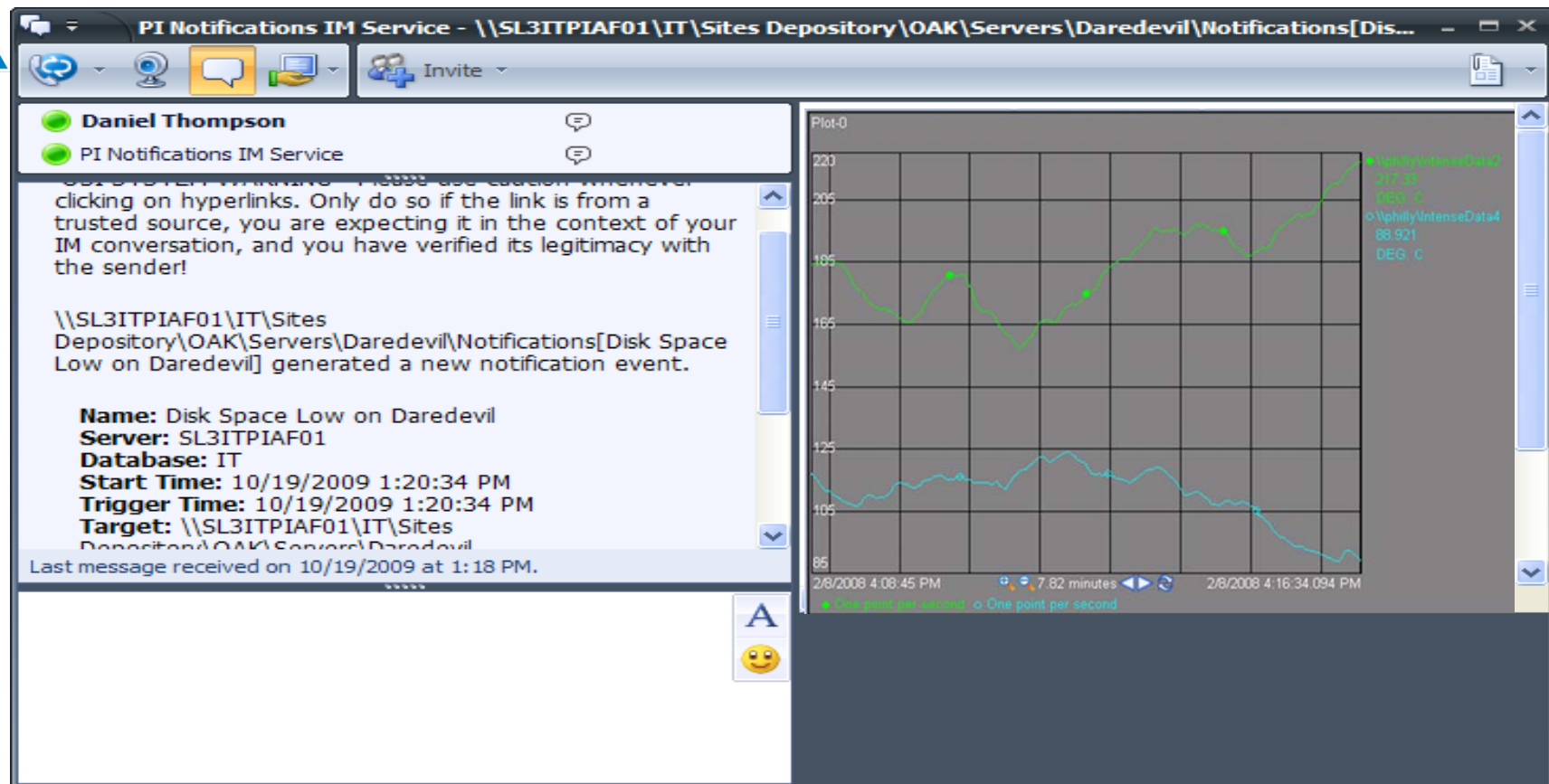
.NET
C#
LINQ

StreamInsight Application at Runtime



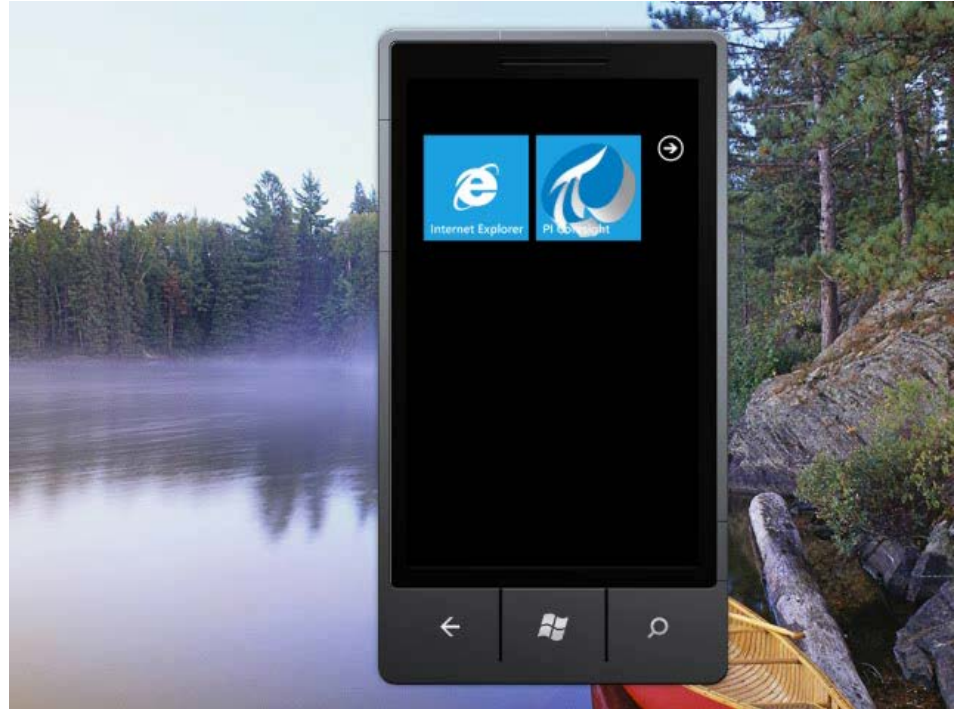
PI for StreamInsight

PI Notifications and OCS R2 (Lync) Real-time Trends

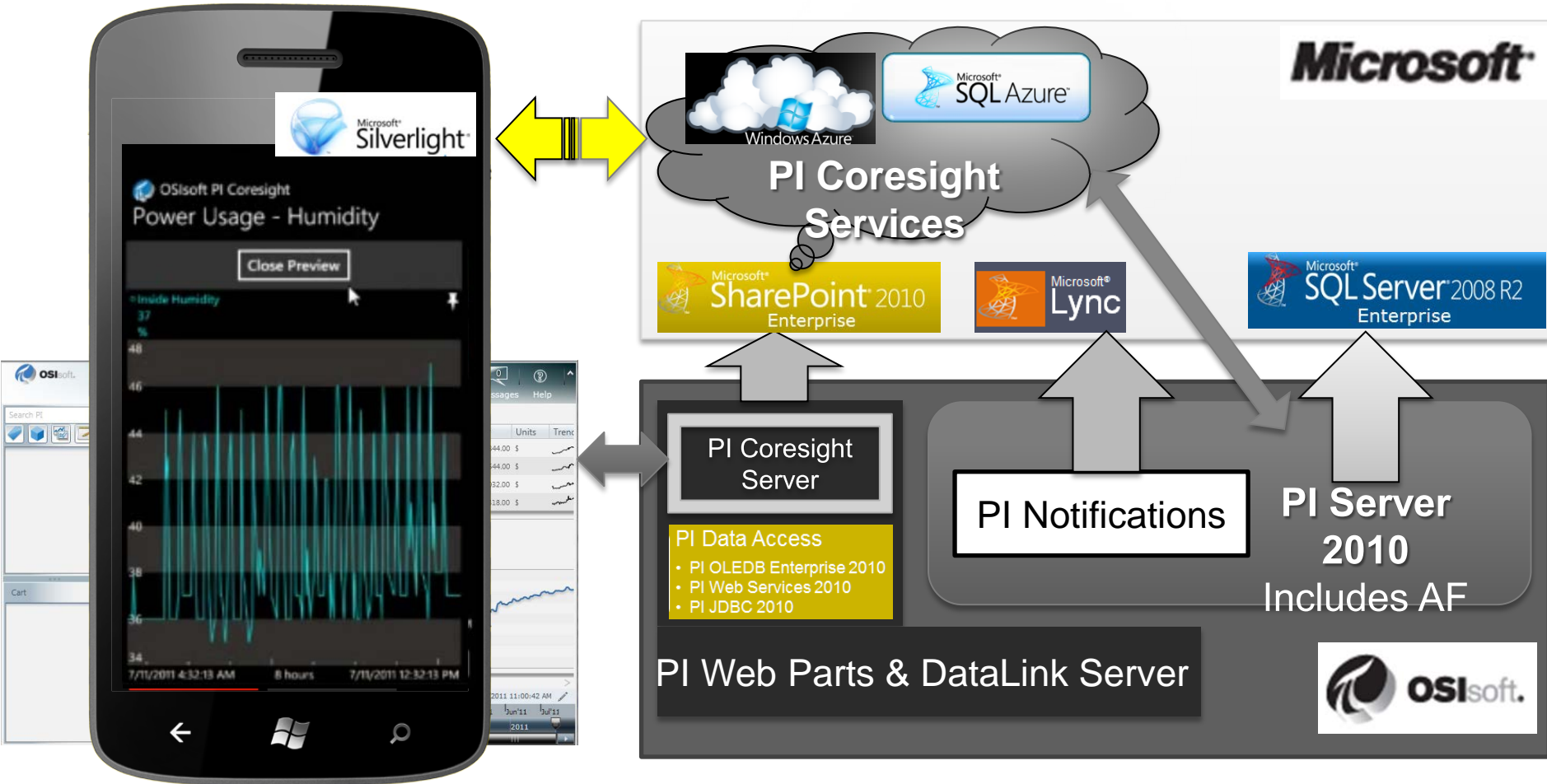


PI Coresight

- Web based user interface to analyze PI System data
- Mobile support (Silverlight)
- Intuitive UI



OSIsoft | Microsoft Integration for PI Coresight



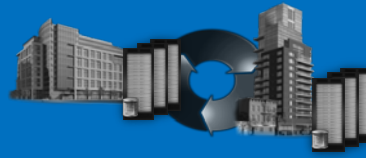
SQL Server codename “Denali”

Delivering business agility and innovation to gain strategic value out of your information

Mission Critical
Platform



Developer & IT
Productivity



Pervasive Insight



“Denali” Reporting and Alerting

Project Crescent

Empower users

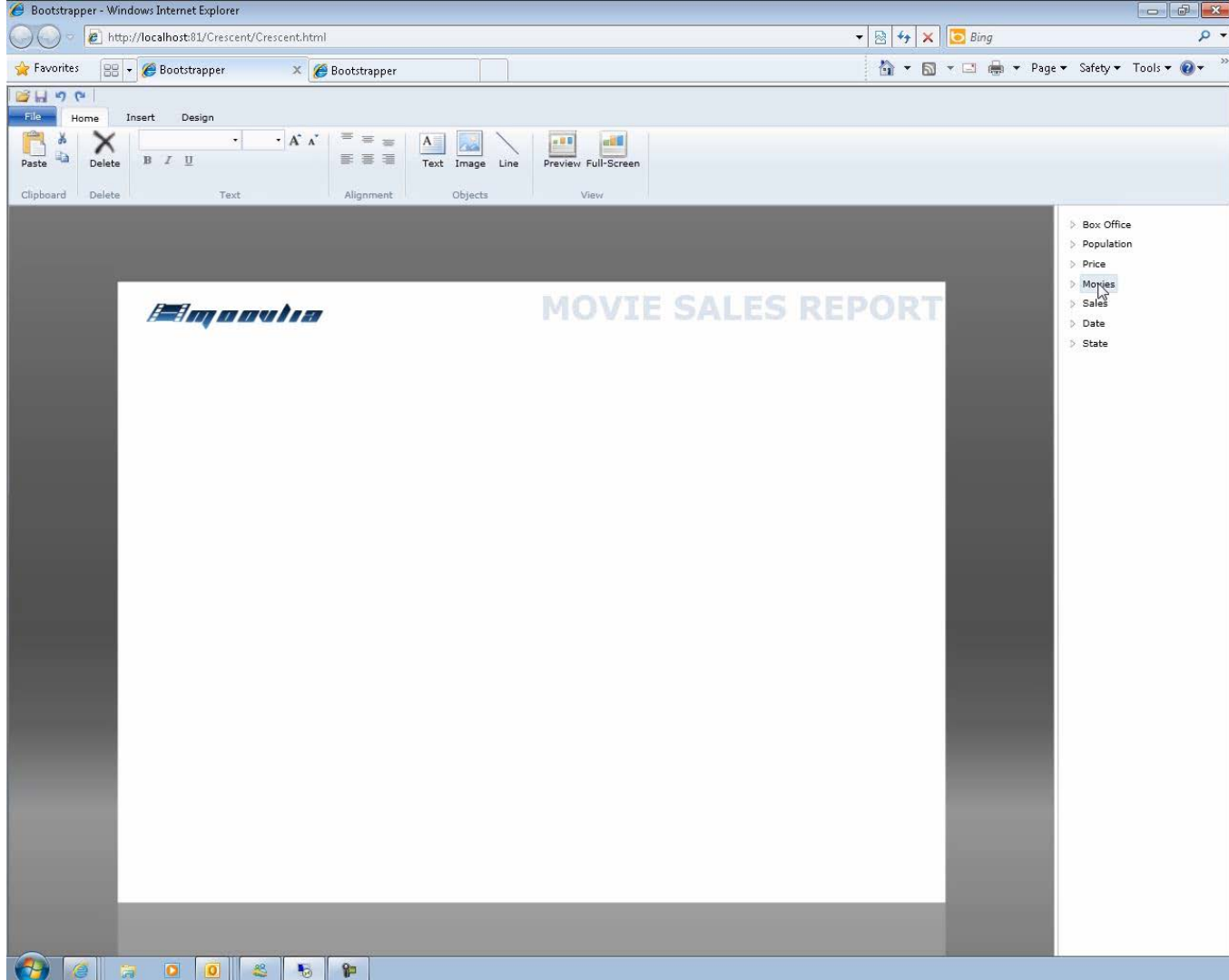


Proactive Intelligence



Increase efficiency







Agenda

- Technology and Trends
- OSIssoft Microsoft Alliance
- Real World Examples

OSIsoft & Microsoft Customers



Mexico's Electrical Utility Sees Saving Millions of Dollars through Collaborative BI

Overview

Country or Region: Mexico
Industry: Government, Utilities

Customer Profile

Comisión Federal de Electricidad (CFE) is Mexico's national electrical power utility, serving nearly 28 million customers throughout the country. It is based in Mexico City and has 85,000 employees.

Business Situation

To maintain its success despite increasingly challenging business conditions, CFE had to find a better, faster, more collaborative way to glean business intelligence from its untapped information sources.

"BI is no longer an individual activity; it has to work together in more powerful ways. OSIsoft and Microsoft are making this possible."

Fernando Barradas, Director of Information Applications

Mexico's electrical utility—Comisión Federal de Electricidad (CFE)—faced higher costs, a difficult and increasingly complex mix of sources for generating power. To factor these and other variables into its power generation, CFE wanted a business intelligence (BI) solution. CFE's power generation infrastructure unit, CENACE (Centro Nacional de Control de Energía), that solution needed to be collaborative and real-time.



Manufacturer Collaborates with Customers on Real-Time Equipment Monitoring Solution

"We tested some solutions and, in the end, chose two companies that are renowned in their industries. That was important to assure customers that they were getting the best technology solution possible."

Tim Hostman, Vice President of IT Innovations, Flowserve

Flowserve, a leading provider of flow control products and services for the global infrastructure market, wanted to help customers improve facility performance and reduce maintenance requirements. The company now is doing that with its real-time monitoring solution tied to a highly visual Web portal. The solution has the potential to save customers money by reducing downtime while helping Flowserve evolve from an original equipment manufacturer to a complete solution provider.

Customer: Flowserve

Web Site: www.flowserve.com

Customer Size: 15,000 employees

Country or Region: United States

Industry: Manufacturing—Process—
Oil and gas, utilities, chemicals

Partner: OSIsoft

Partner Web Site: www.osisoft.com

Customer Profile

Flowserve is a global provider of pumps, valves, seals, automation, and services to the power, oil, gas, chemical, and other industries. It operates in more than 55 countries.

Software and Services

- Microsoft Office
- Microsoft Office SharePoint Server 2007

CLP'S ENTERPRISE SERVICE BUS PROJECT BASED ON SERA WITH ACCENTURE, AVANADE AND OSISOFT

CLP 中電

**SMART GRID
DATA INTEGRATION**



Thank you

Bhasker Joshi

Microsoft Corporation

bhasker.joshi@microsoft.com

