

# Conference Theme and Keywords

Reliability  
Millions of Streams  
Real-time  
Visualization  
CBM  
Scalability  
Asset Framework  
PI System  
Analytics  
Quality  
IoT  
Connectivity  
Sensor-based Data  
Big Data  
Infrastructure  
High Speed  
Business Transformation  
Security  
Connected Services  
Operational Intelligence  
Regulatory Compliance  
Enterprise Agreement  
Business Impact  
Enterprise  
Process  
Operational Efficiency  
Time Series  
Event Frames  
Future Data  
Energy Management  
Streaming Data  
Open System  
Asset Health  
Safety



# More Value, Faster, from OSIsoft PI System Data

Michael Risse,  
Vice President



# Introducing Seeq

**Seeq** : An innovative productivity application for engineers to quickly discover insights from industrial process data

## An application, with an API

Interactive, intuitive user app to enable faster and easier discovery.



## Time series features and context

Search and data objects specific to industrial process data sets.



## Focus on engineers

Engineers, operations can create, collaborate, and retain insights.



## Innovative approach

Instant trial, low touch deployment, on-prem or cloud or service.



OSIsoft.

REGIONAL SEMINARS 2016

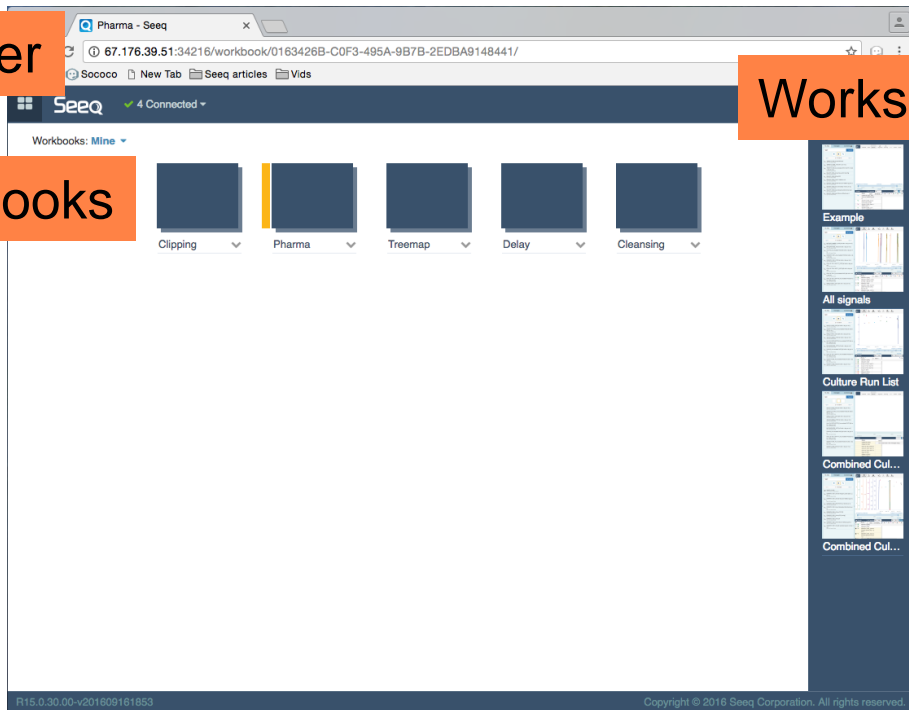
© Copyright 2016 OSIsoft, LLC

# Seeq User Experience

Browser

Workbooks

Worksheets



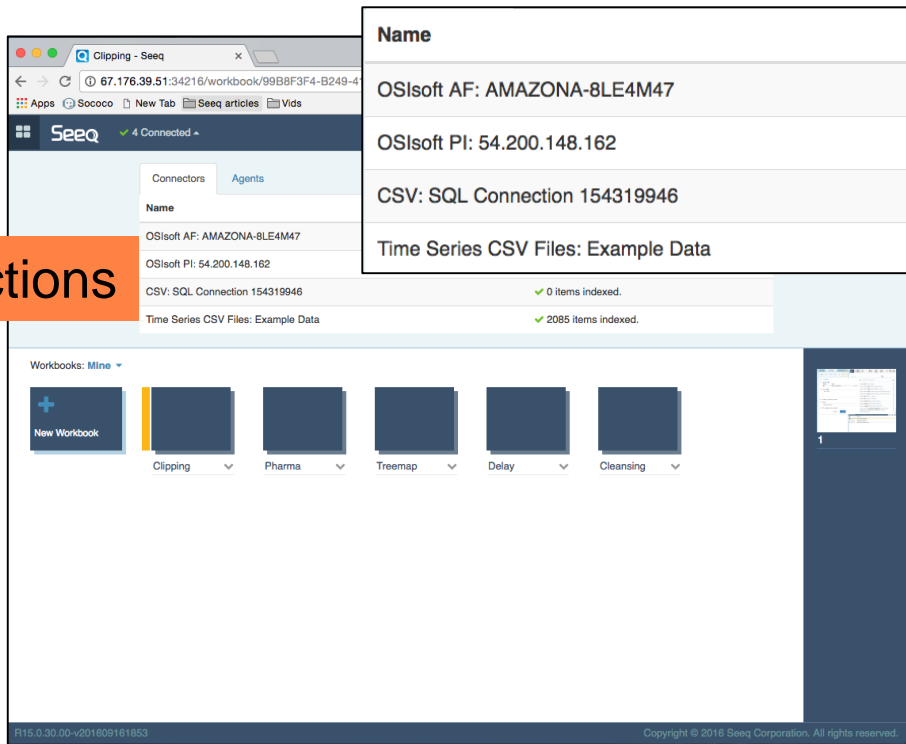
OSIsoft.

REGIONAL SEMINARS 2016

© Copyright 2016 OSIsoft, LLC

# Your Data: As Is, In place

## Connections



The screenshot shows the Seeq web interface. On the left, a sidebar lists connections: OSIssoft AF: AMAZONA-8LE4M47, OSIssoft PI: 54.200.148.162, CSV: SQL Connection 154319946, and Time Series CSV Files: Example Data. The main area displays a table of these connections with their status. Below the table, there's a section for workbooks, including a 'New Workbook' button and several existing workbooks: Clipping, Pharma, Treemap, Delay, and Cleansing. The bottom of the interface shows the version R15.0.30.00-v201609181853 and the copyright notice for Seeq Corporation.

Name	Status
OSIssoft AF: AMAZONA-8LE4M47	✓ 303 items indexed.
OSIssoft PI: 54.200.148.162	✓ 413 items indexed.
CSV: SQL Connection 154319946	✓ 0 items indexed.
Time Series CSV Files: Example Data	✓ 2085 items indexed.



OSIssoft.

REGIONAL SEMINARS 2016

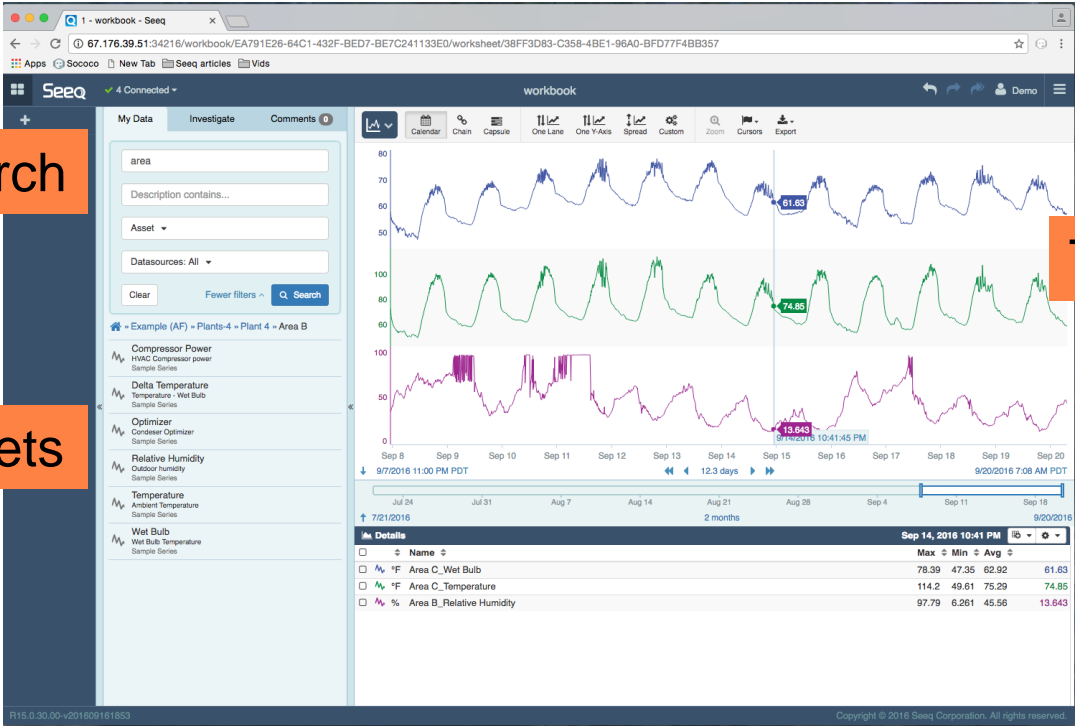
© Copyright 2016 OSIssoft, LLC

# Seeq User Experience

Search

Assets

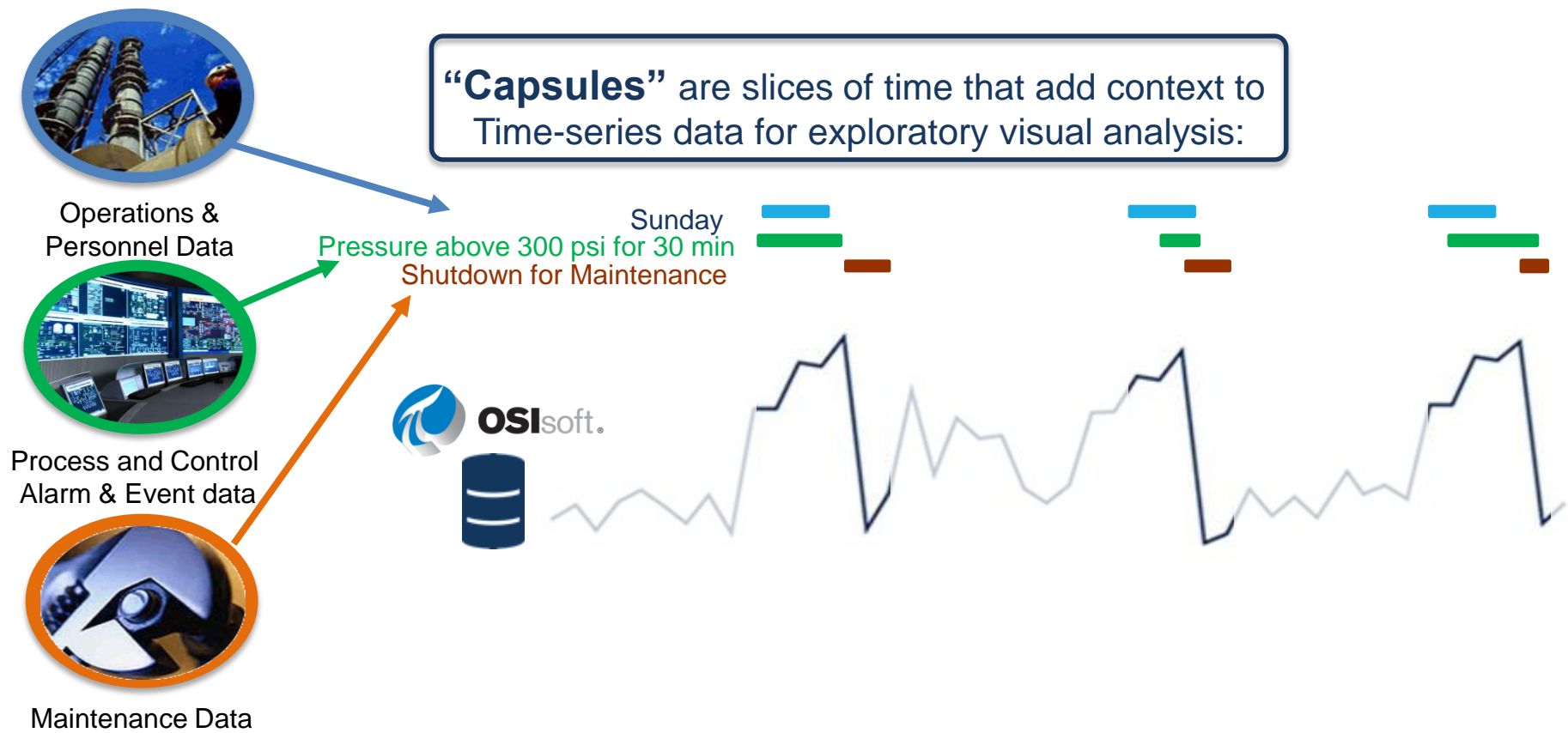
Trending



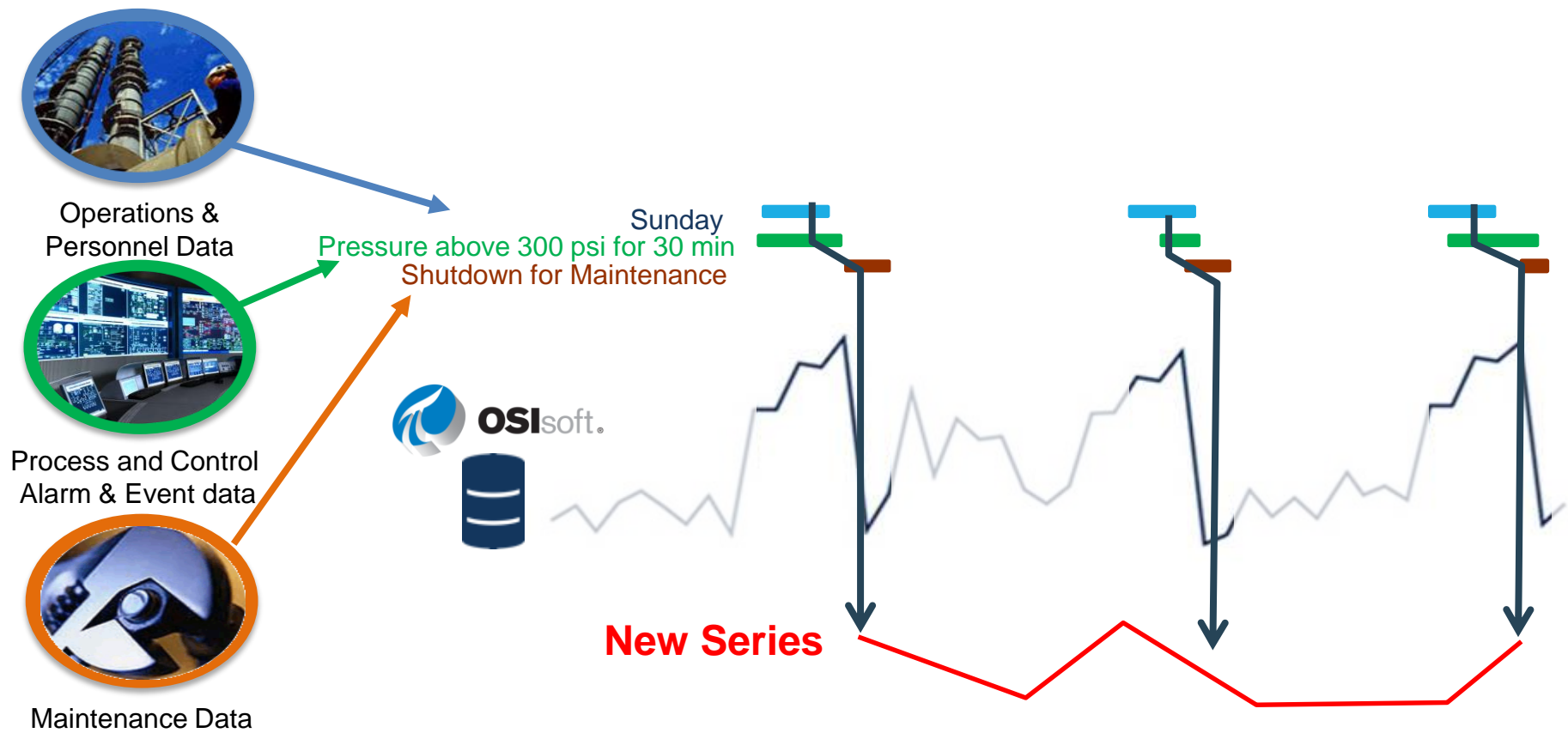
OSIsoft.

REGIONAL SEMINARS 2016

# Capsules: Seeq Feature for Organizing Data



# Capsules: Calculating New Series





# 100,000 Curtailment Periods



Corporate Landscape

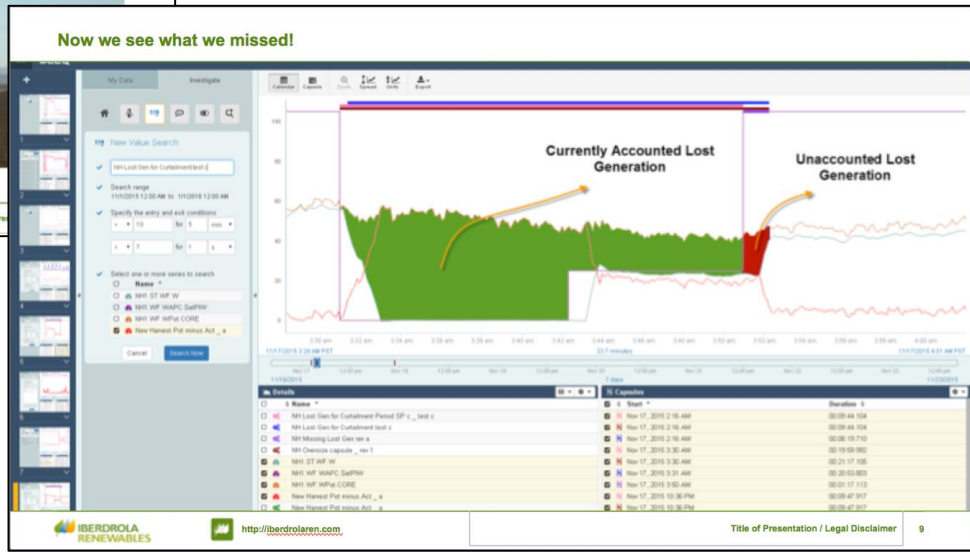
Large Operational Data Infrastructure

Expansive Data Landscape

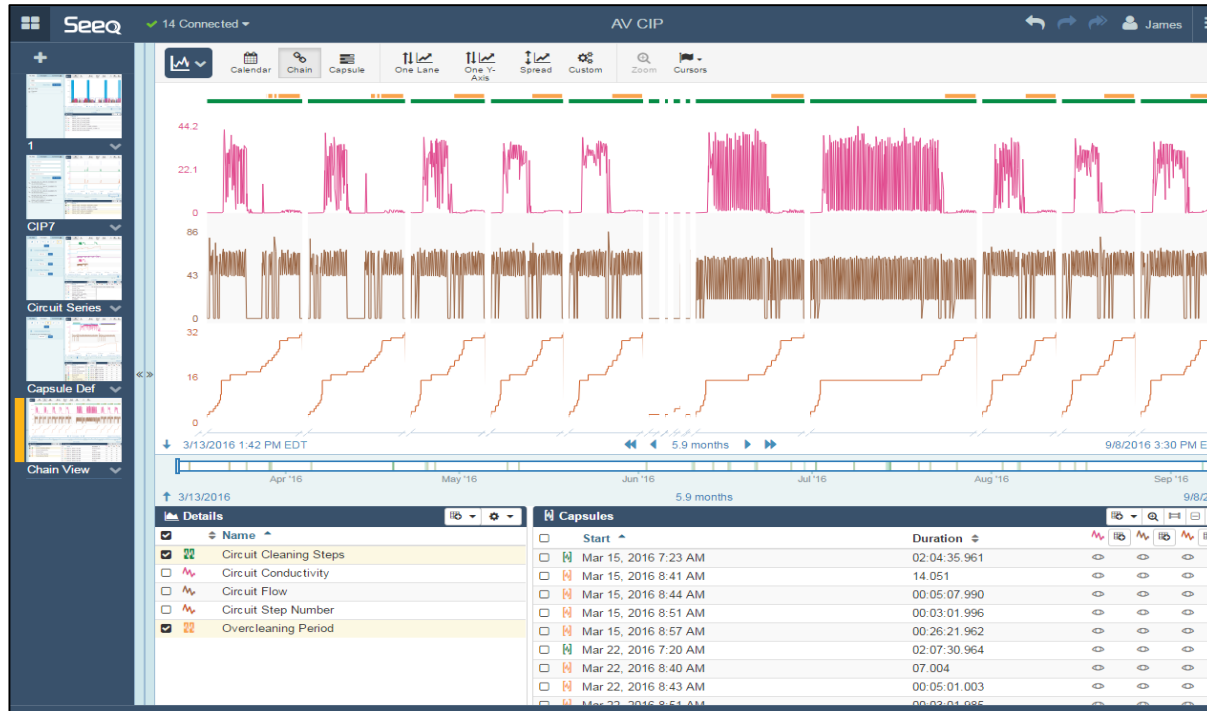
Kiondike Wind Farm

IBERDROLA RENEWABLES <http://iberdrolaren.com>

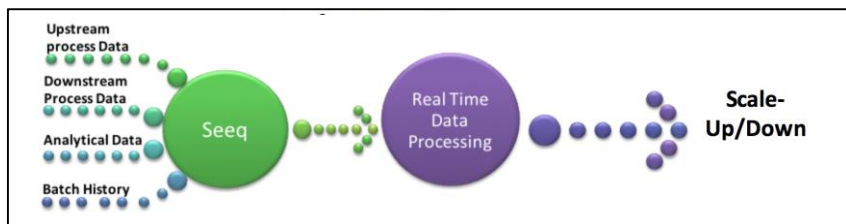
Title of Pre



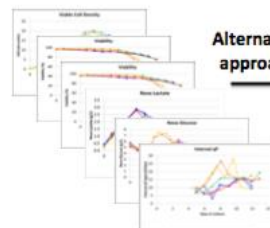
# Identifying Excessively Long Procedures



# Integrating Context from SQL Server



Manual, time-consuming, data investigation and analysis



Alternative approach

In these overlays:

- 6 reactors,
  - 14 individual sample points,
  - 5-6 offline pieces of analytical equipment,
  - thousands of online trending data points
- ... all manually handled in Excel

## Results

Rapid, real time data investigation and analysis in Seeq®



Plotted  
"Oxygen  
Flowrate"  
Data

Overlaid with  
"Viable Cell  
Density"  
Data  
(from .csv file  
or SQL  
database)

Overlaid with  
calculated  
"Oxygen  
Uptake Rate/  
Viable Cell"  
Data

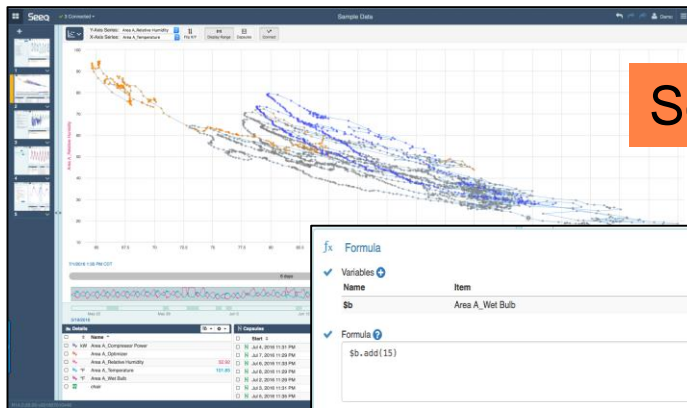
... all analyzed in the same  
environment.



OSIsoft.

REGIONAL SEMINARS 2016

# Your Value



Scatterplot

Real-time  
Collaboration

A screenshot of the OSIsoft Coresite Formula editor interface. The window is titled "Formula" and contains a "Variables" section with a table of variables. The "Formula" section contains a text area with the formula "\$b.add(15)". The "Editing a % Series Formula" section includes fields for "Name" and "Clipping Boundary". The "Available in all workbooks" checkbox is unchecked. The "Cancel" and "Execute" buttons are at the bottom. A search bar for functions is visible on the right side of the window.

Formulas

OSIsoft Coresite

A screenshot of the OSIsoft Coresite "Export to Excel" dialog box. The dialog box has a title bar with a close button. Below the title bar, the "Export Options:" section lists three options: "Include Summary Data" (checked), "Include Series Samples" (checked), and "Automatic Grid Period" (selected with a radio button). Other options include "Custom Grid Period" and "Ungridded Original Timestamps". The "Export" button is at the bottom right of the dialog box.

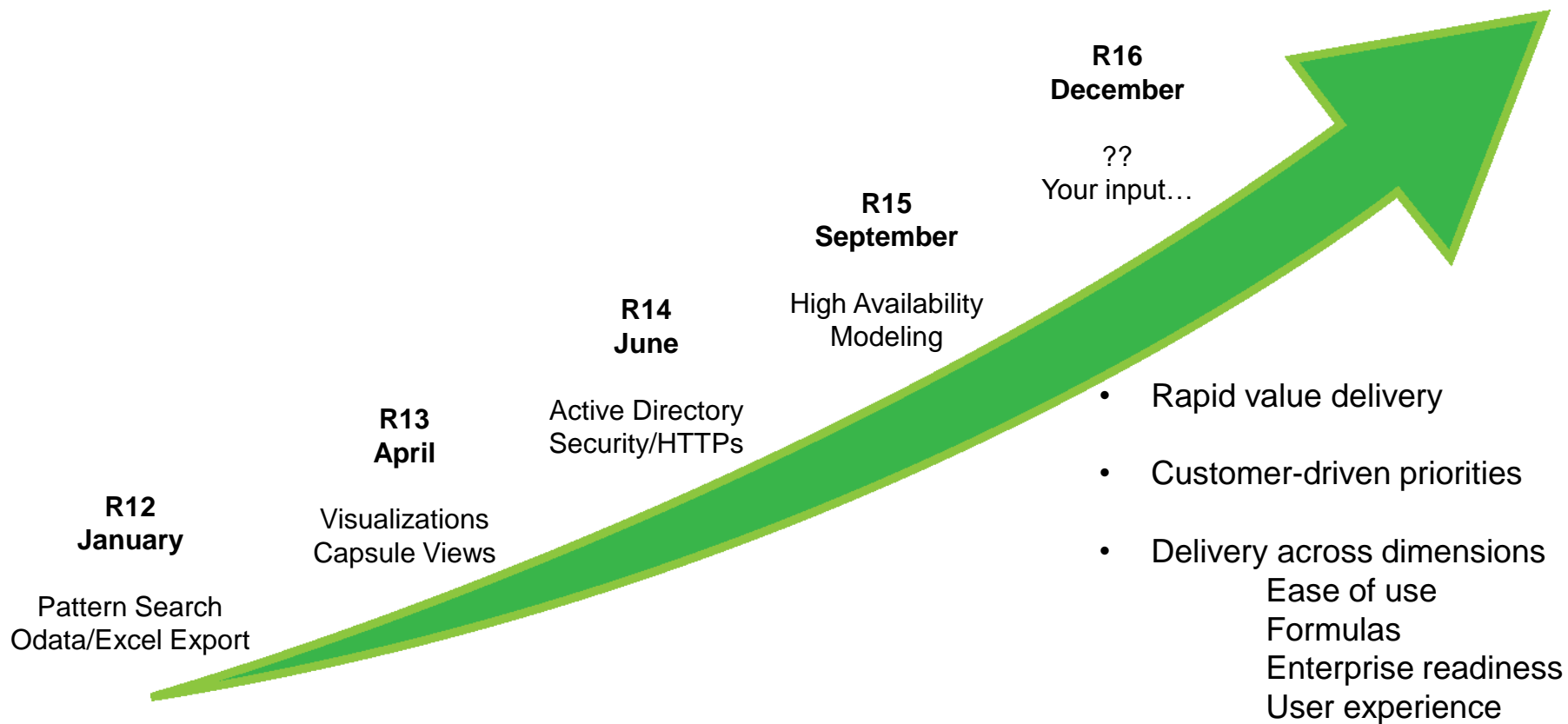
Excel



OSIsoft.

REGIONAL SEMINARS 2016

# Seeq Delivery Schedule



# Introducing Seeq

**Seeq** : An innovative productivity application for engineers to quickly discover insights from industrial process data.

## An application, with an API

Interactive, intuitive user app to enable faster and easier discovery.



## Time series features and context

Search and data objects specific to industrial process data sets.



## Focus on engineers

Engineers, operations can create, collaborate, and retain insights.



## Innovative approach

Instant trial, low touch deployment, on-prem or cloud or service.



OSIsoft.

REGIONAL SEMINARS 2016

© Copyright 2016 OSIsoft, LLC

# Contact Information

## Speaker's Name

[Michael.Risse@Seeq.com](mailto:Michael.Risse@Seeq.com)

Vice President

Seeq Inc.



감사합니다

谢谢

Danke

Merci

Gracias

**Thank You**

ありがとう

Спасибо

Obrigado



OSIsoft.

REGIONAL SEMINARS 2016

© Copyright 2016 OSIsoft, LLC



# Questions

Please wait for the  
**microphone** before asking  
your questions



State your  
**name & company**

# Please don't forget to...

Complete the Survey  
for this session



The **Power of Data**

DECISION READY IN REAL-TIME

## Evaluation Form (Seminar Location - Date)

Name: \_\_\_\_\_

Company: \_\_\_\_\_

Email: \_\_\_\_\_

### Quality and content of the presentations

Poor Good Excellent N/A

Welcome	<input type="radio"/>	<input type="radio"/>	<input type="radio"/>	<input type="radio"/>
The Journey To Real-Time Operational Intelligence	<input type="radio"/>	<input type="radio"/>	<input type="radio"/>	<input type="radio"/>
The Power of Connection	<input type="radio"/>	<input type="radio"/>	<input type="radio"/>	<input type="radio"/>
Tank Level Management System	<input type="radio"/>	<input type="radio"/>	<input type="radio"/>	<input type="radio"/>
Using the PI System to Aid in Troubleshooting Operational Aspects of Oil and Gas Well Drilling and Completion	<input type="radio"/>	<input type="radio"/>	<input type="radio"/>	<input type="radio"/>
Unleash your Infrastructure	<input type="radio"/>	<input type="radio"/>	<input type="radio"/>	<input type="radio"/>
Information on the Spot	<input type="radio"/>	<input type="radio"/>	<input type="radio"/>	<input type="radio"/>
Wrap-up/Seminar Conclusion	<input type="radio"/>	<input type="radio"/>	<input type="radio"/>	<input type="radio"/>

### Quality and organization of the seminar

Choice of date	<input type="radio"/>	<input type="radio"/>	<input type="radio"/>	<input type="radio"/>
Time allowed for lunch/breaks	<input type="radio"/>	<input type="radio"/>	<input type="radio"/>	<input type="radio"/>
Choice of presentations	<input type="radio"/>	<input type="radio"/>	<input type="radio"/>	<input type="radio"/>
Break and time allowed for the presentation	<input type="radio"/>	<input type="radio"/>	<input type="radio"/>	<input type="radio"/>



OSIsoft.

REGIONAL SEMINARS 2016

© Copyright 2016 OSIsoft, LLC