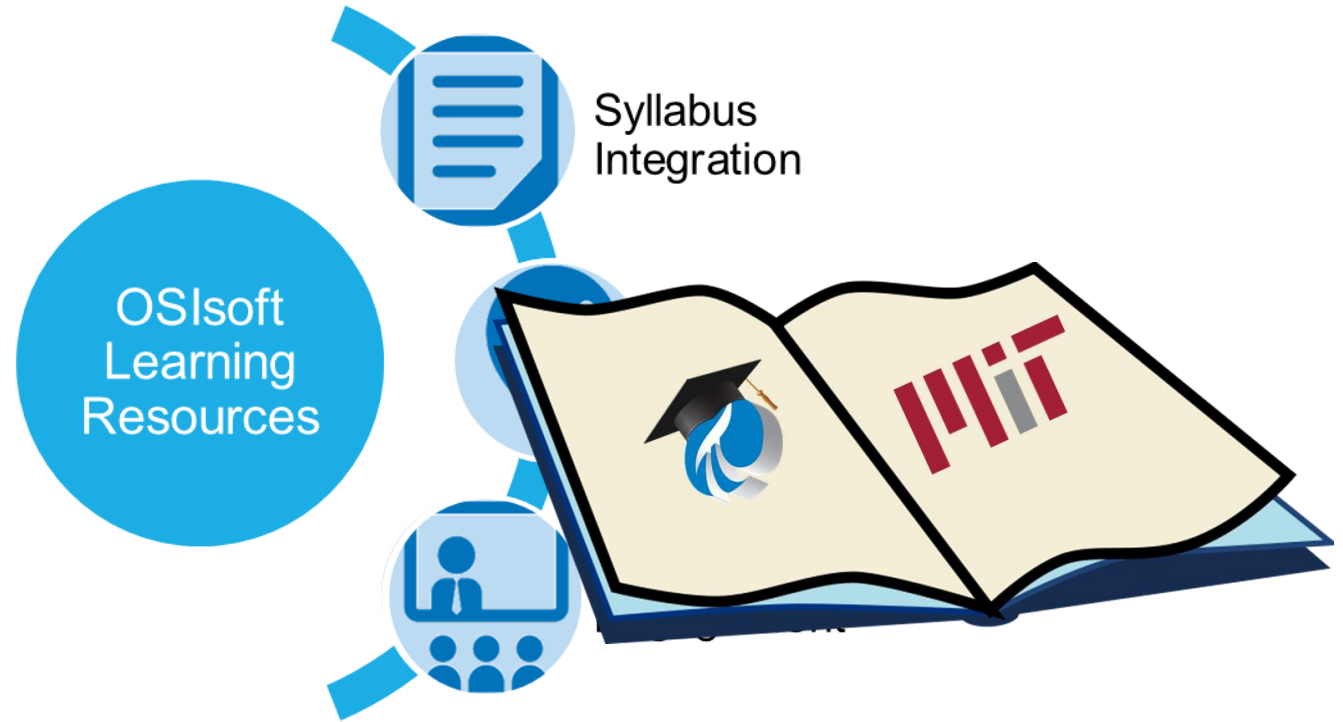




OSIsoft Learning Resources for Academia

Presented by **Erica Trump, PhD**

Getting Started with PI



MIT Bioengineering Course

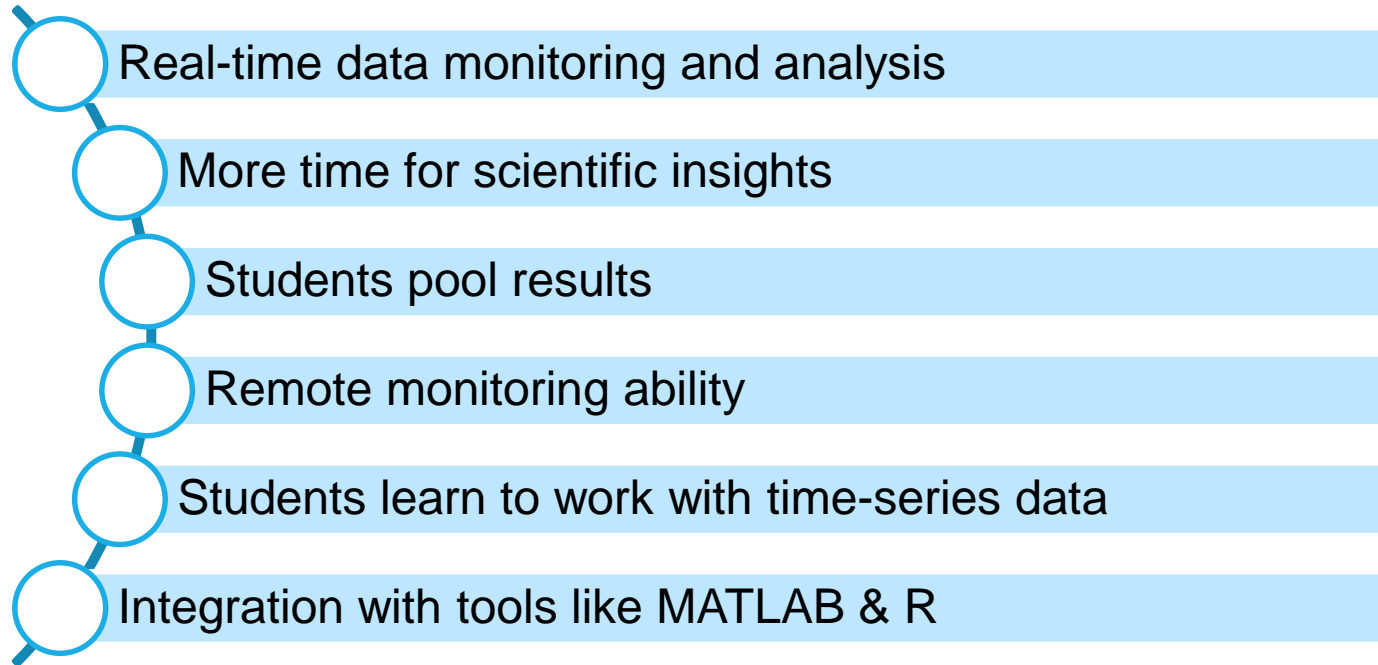
- Revamped version of Chemical Engineering Unit Operations
- Course objectives include:
 - Hands-on experience with bioprocesses
 - Experimental design
 - Exposure to industry-standard tools



PI System is Standard in Life Sciences Industry



More Reasons for PI



Classroom Rollout





OSIsoft: Upgrade to PI Server 2015: Full Walk-through (from...
207 views • 3 weeks ago
CC



OSIsoft: Prepare for an Upgrade to PI Server 2015 (from version...
108 views • 3 weeks ago
CC



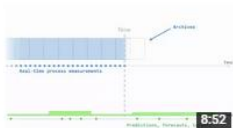
OSIsoft: Install a New PI Server 2015: Full Walk-through (AF...
197 views • 3 weeks ago
CC



OSIsoft: Install SQL Server 2012 Express for PI Server
117 views • 3 weeks ago
CC



OSIsoft: Prepare for a New PI Server 2015 Installation
190 views • 3 weeks ago
CC



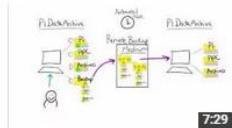
OSIsoft: How is Future Data Stored in the PI System?
464 views • 1 month ago
CC



OSIsoft: Map Overview of the PI System from 2015 Users...
2,588 views • 3 months ago
CC



OSIsoft: Live Demo of Core PI System Products from 2015...
2,285 views • 3 months ago
CC



OSIsoft: What Are Backups of the PI Data Archive & Why Are They...
793 views • 4 months ago
CC



OSIsoft: How to Perform an On Demand Backup (Single Time) ...
271 views • 4 months ago
CC



OSIsoft: Configure an Automated Scheduled Task to Take a...
320 views • 4 months ago
CC



OSIsoft: Copy the Local Backup of the PI Data Archive to a...
238 views • 4 months ago
CC



OSIsoft: How to Check PI Data Archive Backup History &...
250 views • 4 months ago
CC



OSIsoft: Meet the Course Author for the Configuring a Simple PI...
1,808 views • 5 months ago
CC

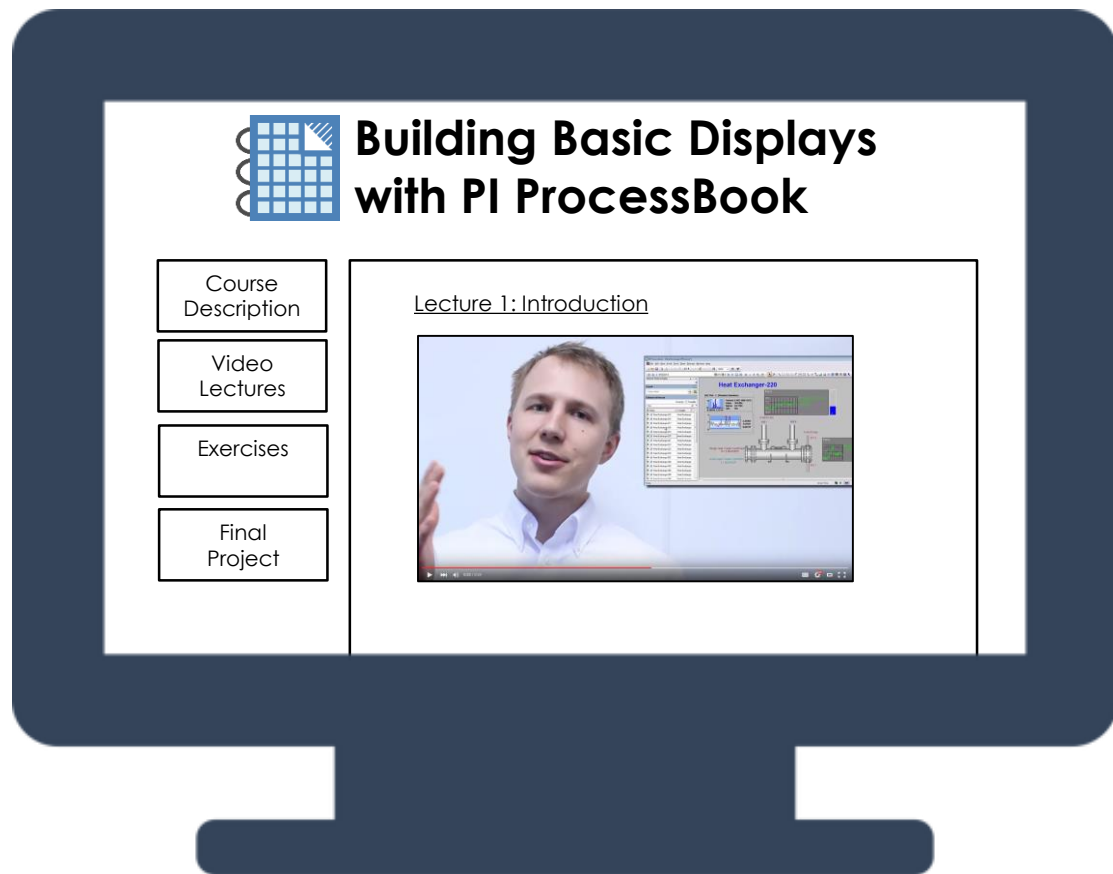


OSIsoft: What is the PI Interface for OPC DA? (How It Works,...
3,365 views • 5 months ago
CC

Learn on the go!

Watch any of our
1000+ free videos on
YouTube

Playlists for easy
product learning

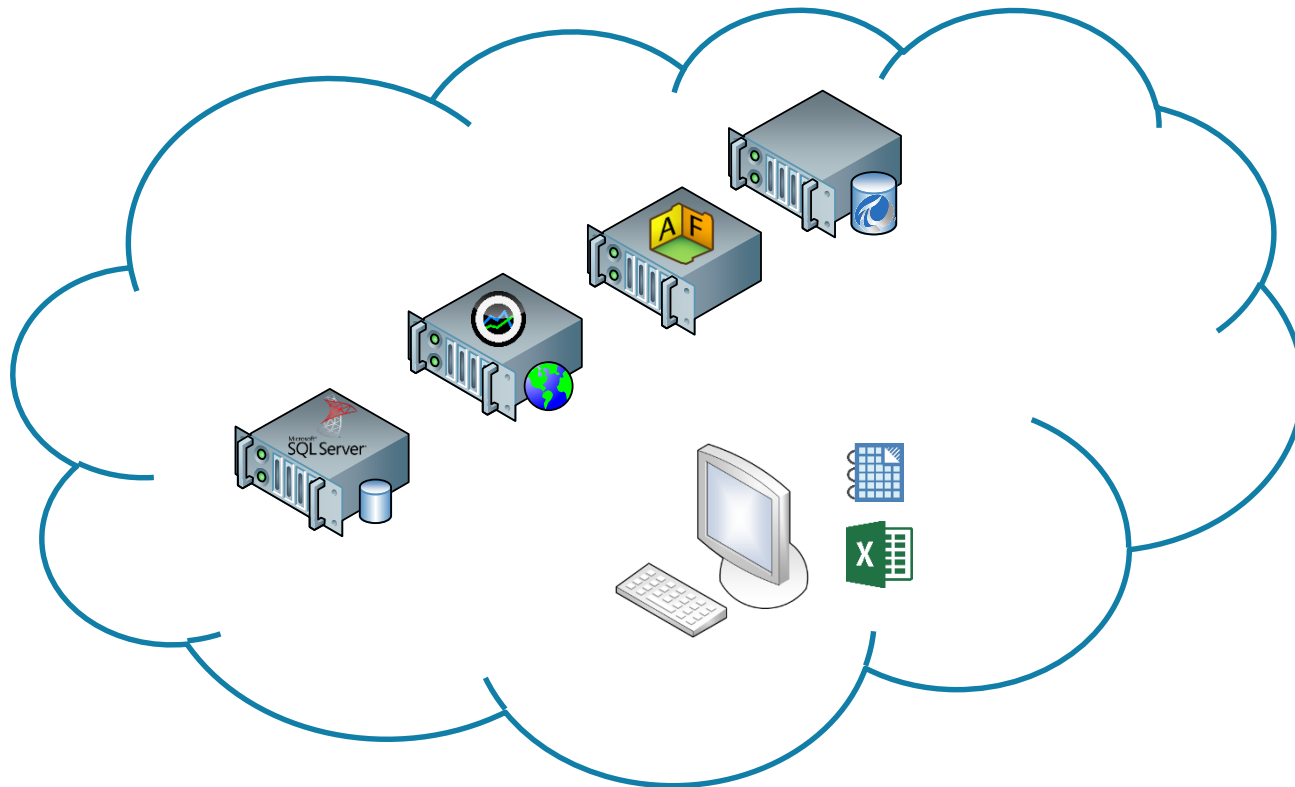


Learn at your own pace

Courses tailored to the specific skills you need

Community support and feedback

Virtual Learning Environment



Use our sandbox

Emerge yourself in learning immediately

Complete PI System setup to illustrates specific learning topic



OSIsoft Home • Worldwide Locations • Tech Support • Learning

Home News Spaces ▾ People Ideas Content



Online Learning Courses
Now Available!

REGISTER NOW ►►

LATEST OSISOFT NEWS

Tweets

Follow

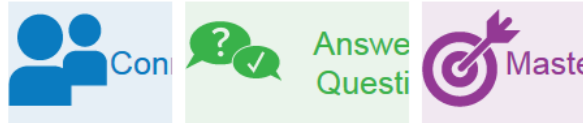
@OSIsoft 22 Jul
Operationalizing the Internet of Things: Four Things You May Be Missing in Your Strategy
ow.ly/PWZZZ #IoT #IIoT #BigData
Expand

Esri Electric & Gas 21 Jul
@EsriEGUG
GIS provides context to your IT

ASK PISQUARE COMMUNITY

Type your question

Ask it



MONTHLY LEADERBOARD

Top 10

My Rank

838th		Jason Yeh	5 Points
867th		Shankar Nar...	3 Points
867th		Dennis Kilgore	3 Points
867th		Francois Aubin	3 Points
867th		Petros Kiousis	3 Points

Make friends!

Connect with the OSIsoft community in PI Square

Share knowledge with other users of the PI System

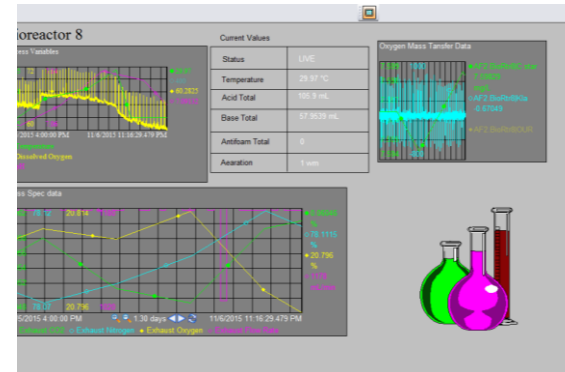
Find answers to your questions

Classroom Rollout



- Students focus on core PI functionality
- Introduction to PI Visualization Tools
 - Workbooks with step-by-step instructions, tie-ins to OSIsoft Learning YouTube channel, and student exercises
 - Training databases with simulated Unit Operations data

- Assignment 1
 - PI DataLink to analyze simulated process data
- Assignment 2
 - PI ProcessBook to prepare bioreactor displays to be used throughout course



- Assignment 3
 - Analyze experimental results in real time
 - Students pool results
 - Explore effects of a wide range of independent variables



Pilot Semester: Early Wins



- With PI tools, students do more with same class time
 - Longer fermentations
 - Students spend more time on engineering and less time prepping experiments
- Class became more collaborative
- Students gain experience working with real-time and historical data

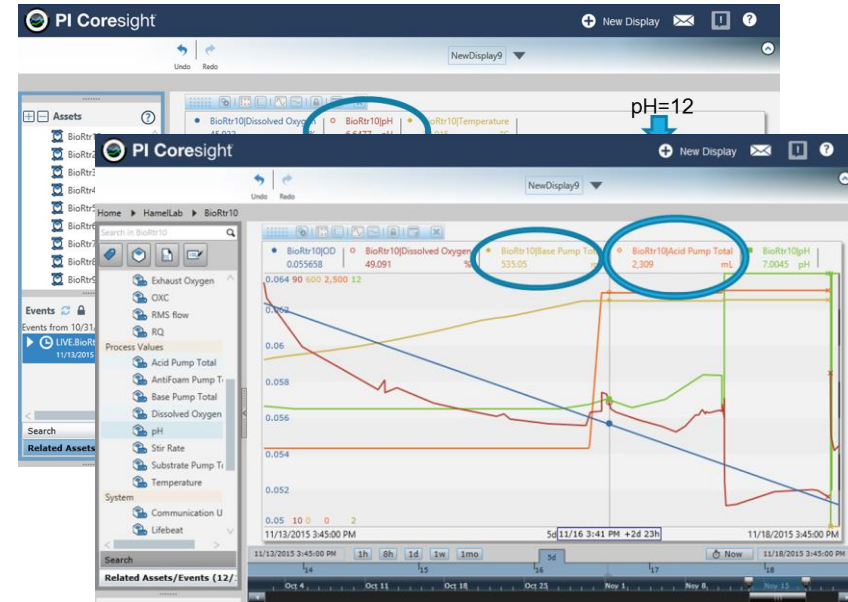
Classroom Rollout



PI System Addresses Course Pain Point



- Experiments fail due to student inexperience
- At semester start, students learn about bioreactors using PI Coresight
 - Easy-to-use tool
 - Data from past, failed experiments are bookmarked and easy to retrieve



PI System Addresses Course Pain Point

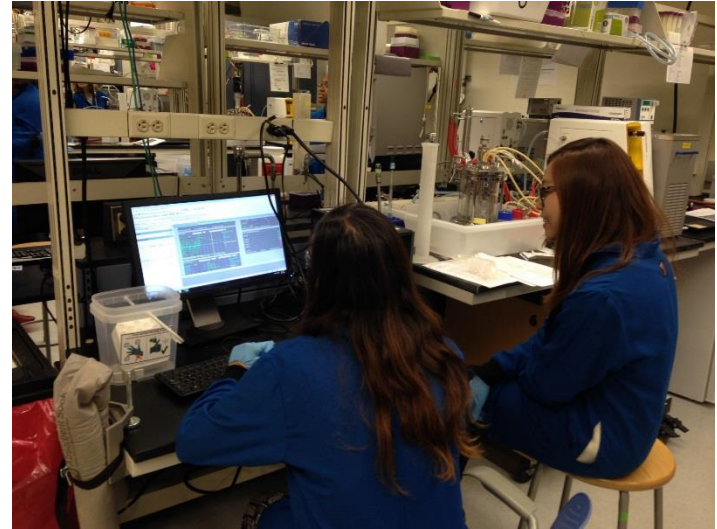


- Students think critically to construct custom dashboards
 - Select key process values for real-time monitoring
 - Anticipate potential problems
 - Demonstrate increased understanding of bioreactors

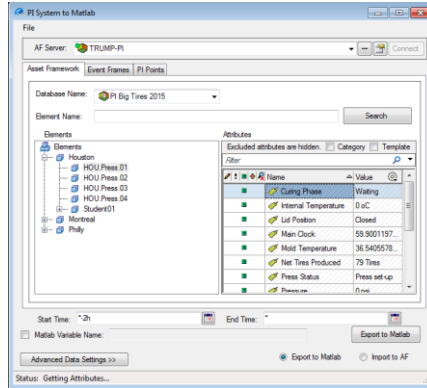
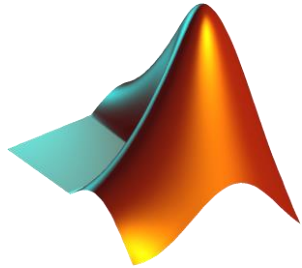


Students Model Bioreactors in PI

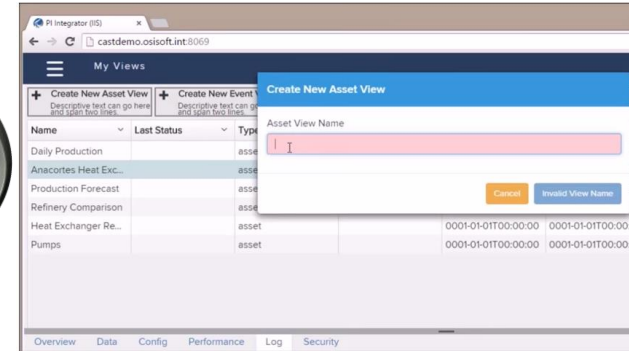
- Students apply engineering principles to analyze data in real time (Advanced)
- Use cases from OSIsoft customers motivate the module
- Students conduct experiment to validate their model



Integrating PI with Advanced Tools

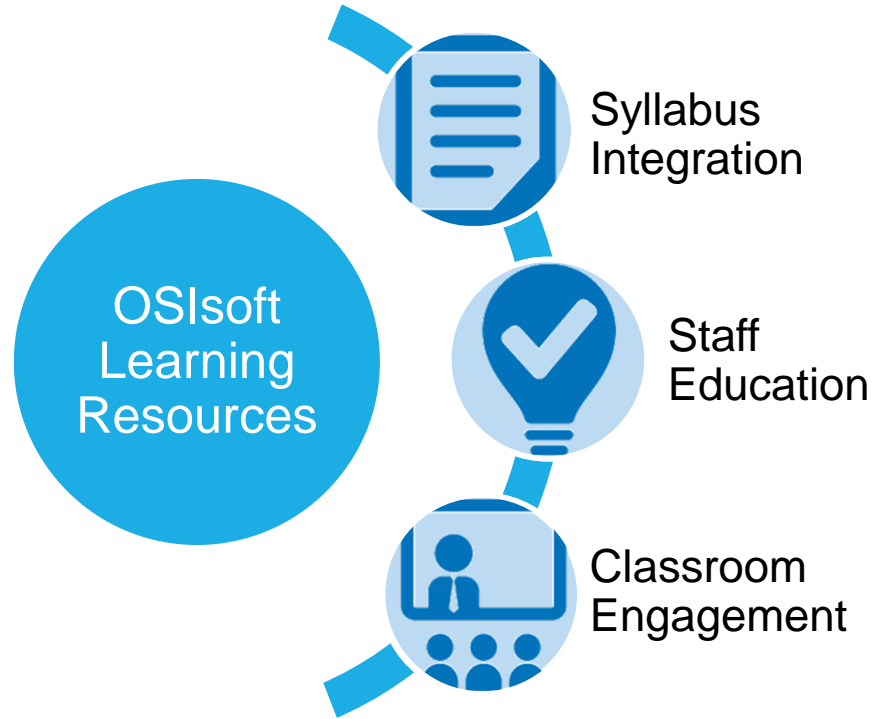


PI-to-MATLAB Utility



PI Integrator for Business Analytics

Getting Started with PI



OSIssoft.

EMEA USERS CONFERENCE • BERLIN, GERMANY

© Copyright 2016 OSIssoft, LLC

Contact Information

Erica Trump

etrump@osisoft.com

Instructional Systems Designer
OSIsoft, LLC



감사합니다

谢谢

Danke

Merci

Gracias

Thank You

ありがとう

Спасибо

Obrigado



OSIsoft.

EMEA USERS CONFERENCE • BERLIN, GERMANY

© Copyright 2016 OSIsoft, LLC