

REAL-TIME PERFORMANCE MANAGEMENT FOR THE ENTERPRISE

RtPM



REAL-TIME PERFORMANCE MANAGEMENT FOR THE ENTERPRISE

RtPM



Welcome and Overview

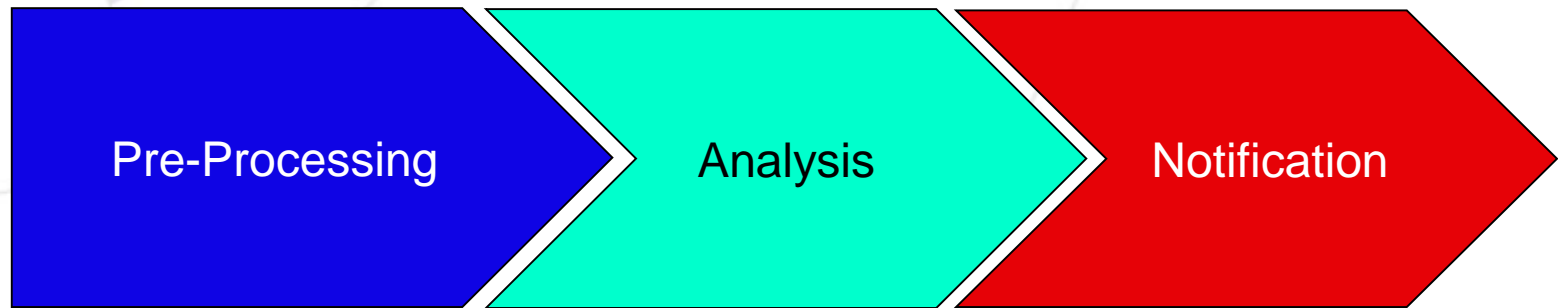
Mark Hughes

High Availability

- No impact backups
- Interface nodes sending data to multiple servers
- Redundant servers



PIANO: PI Analysis and Notification



Analysis and Notification

- Currently part of several products:
Performance Equations, Totalizer, Alarms, AlarmView, RtAlerts, Real-Time SQC, ACE
- Calculation Step
- Notification Step



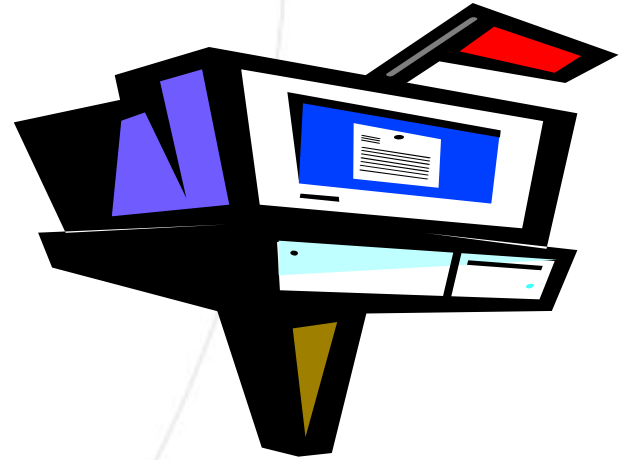
Examples of Analysis

- High alarm
- Statistical quality control
- Loss detection from mass balance
- Operator action recommendation from expert system



Notification

- Subscription
- Prioritization
- Escalation
- Audit trail



How are you using RtPM?

- Alarm Management
- Analyzer Performance
- Automated Generation Control
- Automated Reports
- Balanced Scorecards
- Baseline Best Practices
- Batch Quality Monitor
- Certificate Of Analysis
- Compliance Documentation
- Condition Based Maintenance (CBM)
- Continuous Emissions Monitor (CEM)
- Control Loop Monitor
- Corporate Data Warehouse
- Customer Load Management
- Data Reconciliation
- Down-hole Systems In O&G Production
- Downtime Monitoring
- E-Commerce
- Energy Management System
- Environmental Compliance Monitor
- General Ops Docn And Equipment Specs
- Hazardous Waste Tracking
- Hierarchical Process Data Views

- Hydrogen Manufacturing And Distribution
- Incident Investigations
- Inventory Management
- IT / Systems Monitoring
- Key Performance Indicators (Kpi)
- Lab Quality Data Integration
- LNG Terminal Operating Assistance
- LNG Terminal Operations Reports
- Maintenance History Or Status
- Maintenance Lockout Procedures
- Manual Data Recording
- Manufacturing Intelligence Data
- Material Balance
- Material Usage Tracking
- Multi-Plant Equipment Performance Monitor
- O&G Production Remote Monitoring By Non
Operating Partners And Customers
- O&G Production Well Testing
- Operating Envelope Data
- Operations Data Warehouse
- Operations Desktop
- Operator Handover
- Operator Training



Anything else?

- Paper Machine Felt Monitoring
- Paper Machine Grade Management
- Paper Machine Lost Opportunity Module
- Paper Machine Performance Monitor
- Pipeline Equipment Remote Monitor
- Pipeline Leak Detection Support
- Pipeline Operations Planning
- Pipeline Pigging Schedule For Paraffin Removal
- Pipeline Solar Turbine Efficiency Remote Monitor
- Plant Performance Overviews
- Power Delivery Capability For Gas Turbines
- Power Generation Fleet Outage Management
- Power Generation Supplier Scheduling
- Power Turbine Trip Monitor
- Process Monitoring
- Process Performance Analysis
- Product Compliance Reporting
- Product Development Trials
- Product Pricing
- Product Separation In Multi-Product Pipelines
- Production Analysis
- Production Data Integration To ERP
- Production Plan Versus Target Data
- Production Plan Versus Actual Data
- Pulp And Paper Mill Steam Energy Monitor
- Pulp Mill Tracking

- Quality Monitoring/Analysis
- Reliability Centered Maintenance Support
- Reservoir Control And Production Operations
- Root-Cause Analysis
- Shared Inventory Management Service
- Shift Production Monitor
- Six Sigma
- SPC/SQC Production Quality Control
- Steam Turbine Performance Analysis
- Substation Load Monitoring
- Substation Transformer Asset Management
- Supply Chain Management
- T&D Network System Load Forecasts
- T&D Network System Load Planning
- T&D Substation Equipment Monitoring
- Tanker Fleet Current/Past Locations
- Total Effective Equipment Productivity
- Transmission Line Capacity Planning
- Transmission Network Diagrams
- Transmission Network Frequency Monitor
- Troubleshooting Equipment Startups
- Utilities Management
- Virtual On-Line Analyzer In Refining
- Waste Treatment Monitor
- Weather Data Import

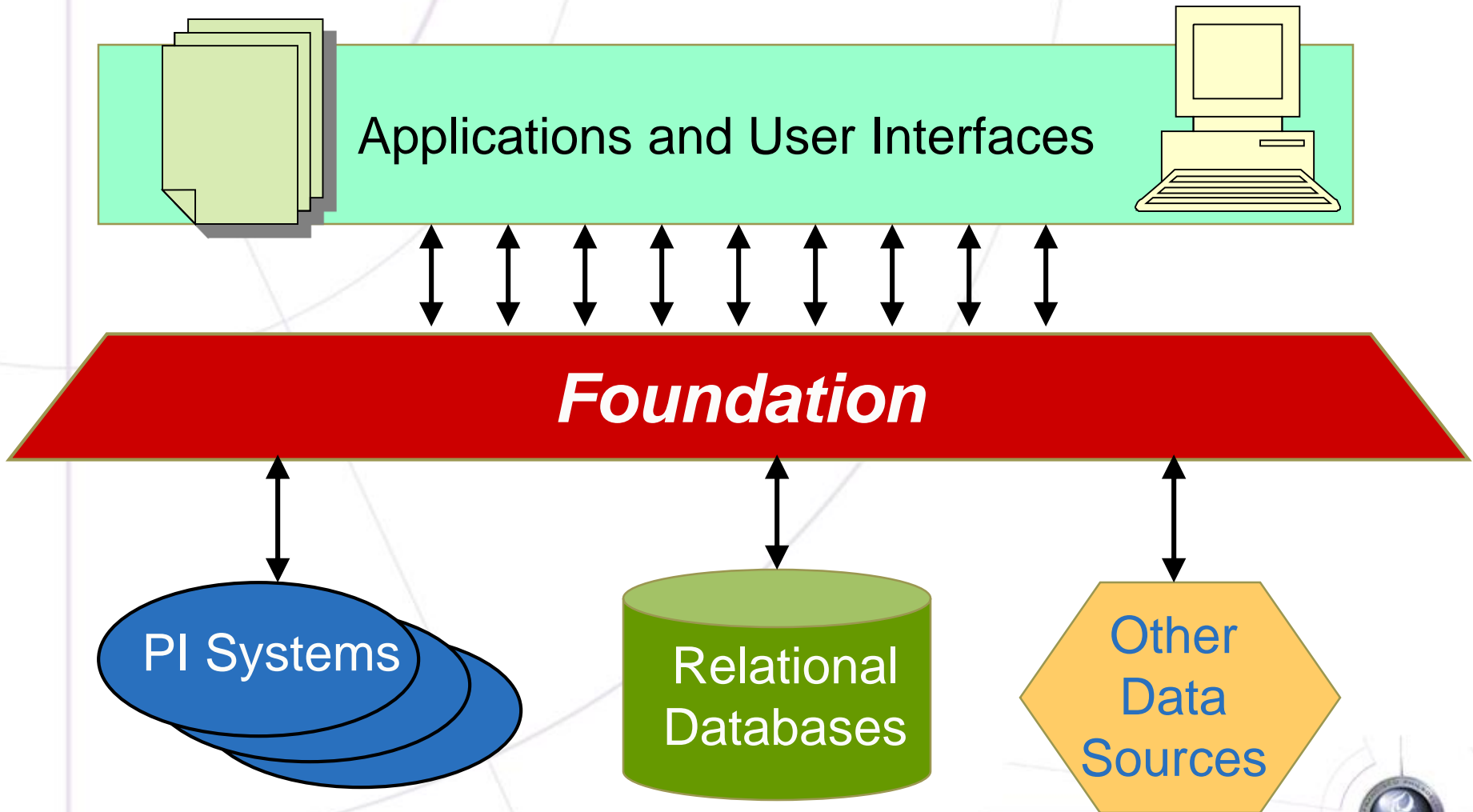


Foundation Principles

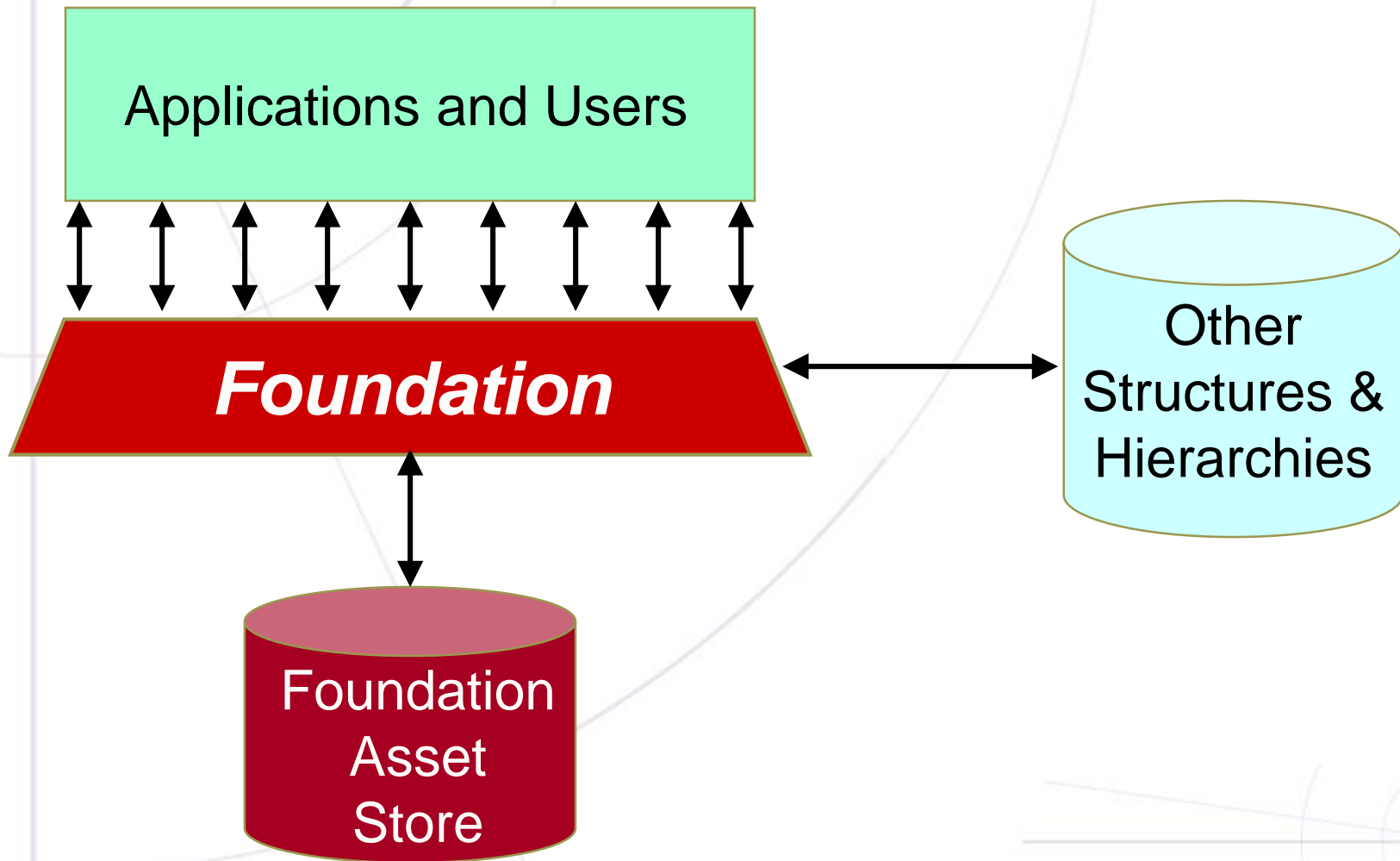
- Move logic from visualization to services
- Enterprise wide
- Abstract data we do not store
- Share assets between applications
- Abstract assets and relationships we do not store
- Attach time series to assets



Enterprise-wide



Logical organization of assets



Today: Analysis Framework

- Analysis Framework Server
 - Templates
 - Assets
 - Models
 - Data References
- ProcessBook add-in
- DataLink add-in



File Edit View Insert Tools Draw Arrange Window Help

100%

AF Browser

UC2005_TEST

Elements Templates

- Elements
 - Houston
 - Line1
 - Distillation1
 - Reactor1
 - Line2

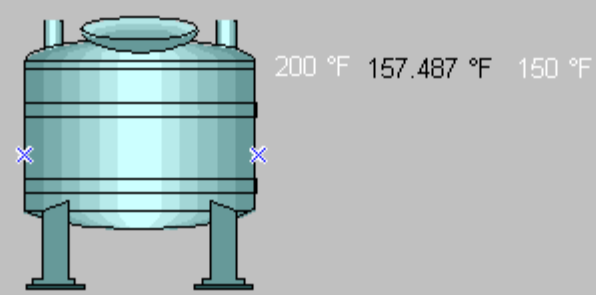
AF Property

General Elements Attributes Ports

Reactor1

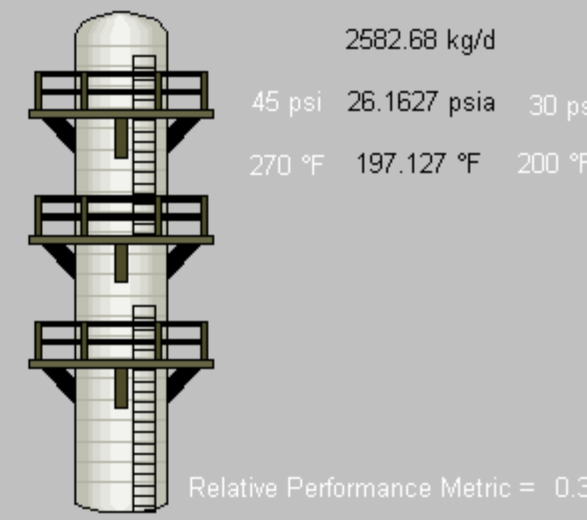
Name	Value
MaintenanceR...	<Data Table>
Performance	0.79109130859376
SerialNum	
Temperature	159.554565429688 °F
TemperatureHi	200 °F
TemperatureLo	150 °F
TemperatureSP	170 °F

Plant Performance = 0.58286
 Line Performance = 0.36347



Relative Performance Metric = 0.74974

WorkOrder	Description	Status
WLM-00006	inspect sens	COMPLETE



Relative Performance Metric = 0.3

WorkOrder	Description	Status
WLM-00025	Change pur	COMPLETE