

REAL-TIME PERFORMANCE MANAGEMENT FOR THE ENTERPRISE

RtPM



REAL-TIME PERFORMANCE MANAGEMENT FOR THE ENTERPRISE

RtPM



PI Utilization: Strategies for Leveraging Existing Technologies in Refining.



John D. Ropp

- 12 years with refinery
- 9 years in Process Controls
- Assistant PI Administrator since 1998
- PI Administrator since 2000
- PI graphics/reports/programming



Patrick Ziegler

- Assistant PI Administrator
- Assisted with the initial rollout.
- 19 years refinery experience
- 10 years in process control
- Developed custom PI interfaces with both the API and SDK

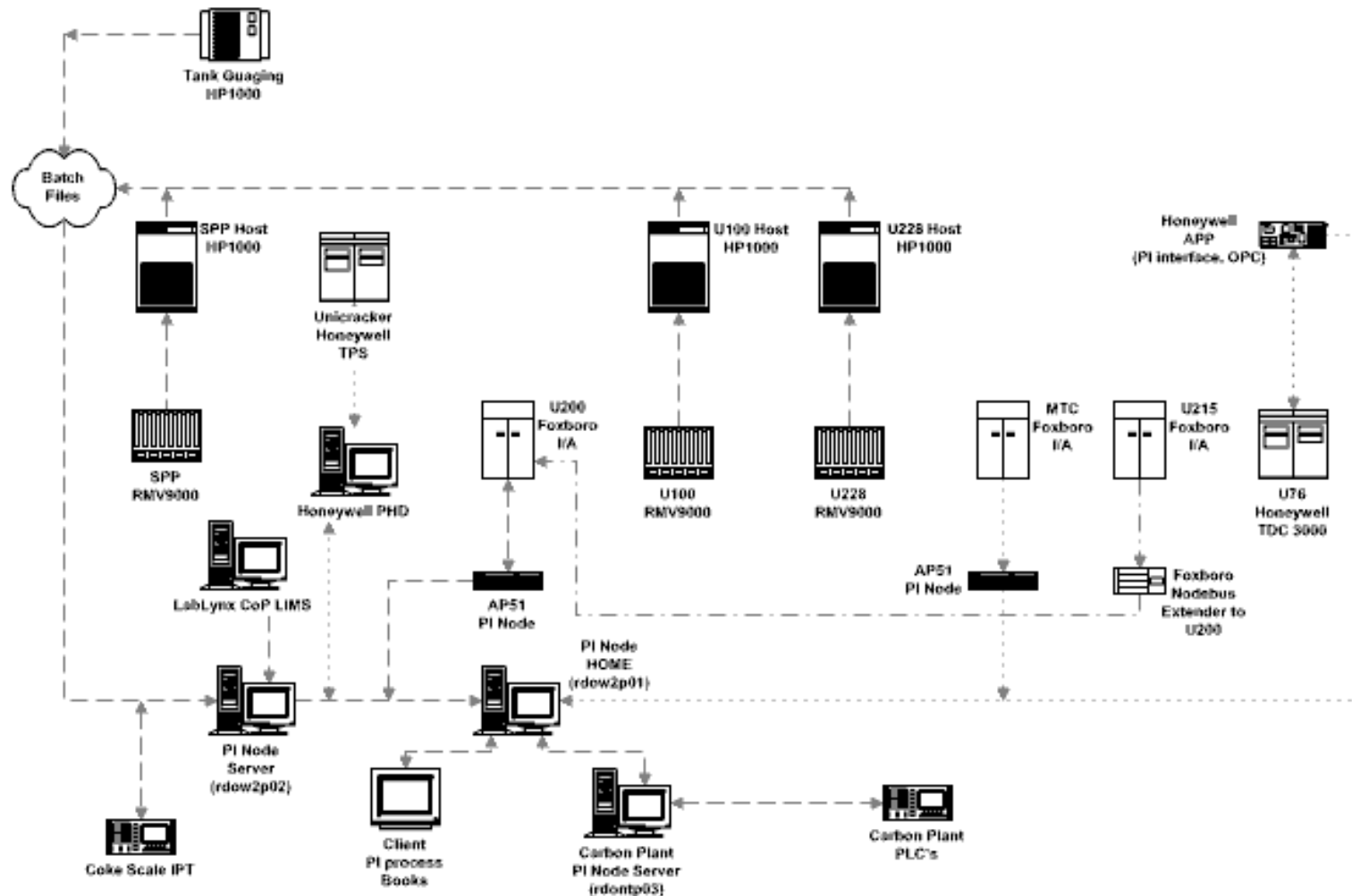


Introduction

- 1997 was the year the refinery started looking for a new plant historian.
- The old plant historian consisted of 1 hour average data stored in a database.
- We considered Honeywell PHD and OSI PI.
- We installed PI in 1997 and migrated data from the old historian.
- We have data online from 1995 till present.



Rodeo Architecture



Hardware

- PI Server
 - Windows 2000
- PI API Node
 - Windows 2000
 - Batch File Node
- PI API Node
 - Windows NT 4.0 Server
 - Modbus Node



Software

- PI UDS 3.4.363
- ProcessBook 2.x
- PI DataLink 2.x
- PI ACE 1.x
- PI SMT 3.x
- PI API
- PI SDK



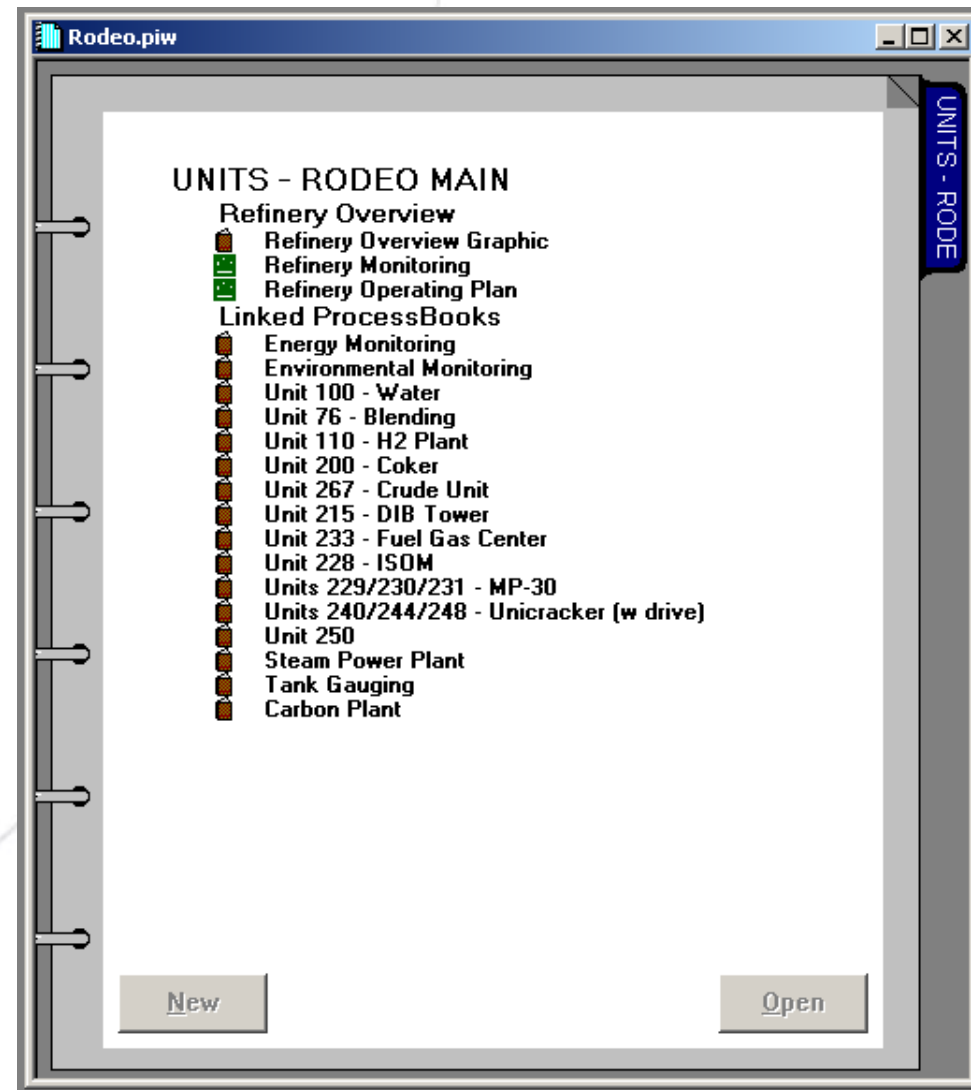
Interfaces in use

- Batch File
 - Flat files generated from HP-1000's
- Honeywell PHD
- OPC
- Foxboro I/A
- LabLynx
- Modbus serial (Custom)
- Manual Entry
- Coke Scale (Custom serial port)



Improvements

- Graphics/Navigation Before



PI Graphics/Navigation before

- Used PIW TreeView interface
- Linked PIWs and PDIs
- Refinery culture attributed everything to PI Administrators (no ownership)
- Majority of users didn't see PI's value

Improvements: PI Graphics/Navigation AFTER

- Graphical overview representation
 - Key flows between units displayed
 - “invisible button” hyperlinks on process units
 - “web-like” feel and behavior
 - Key operating values shown on display
- Hierarchical structure
 - Overview, key graphs, and submenu
- ASM-like graphics standard



Improvements

- Area Ownership
 - PI Administrator owns the basic unit overviews.
 - Detail pages are owned by the operations.
 - Unit engineers and operators create and maintain the detail pages.
 - Every page has an associated owner.

Owner: Patrick Ziegler



Expanded Scope - Before

- Only operations was using PI as a tool.
- Some unit engineers saw the value and used it.
- Operations saw PI as “Big Brother” watching their every move.



Expanded Scope - AFTER

- Environmental

- Title V compliance recording
- New tools to monitor compliance
- PI Datalink used to create a colossal spreadsheet to aid in monitoring
- ACE use
- Module database benefits



Expanded Scope - AFTER

- Planning
 - Operation targets are input into PI using manual entry
 - Manual entry uses Excel and the PI SDK
 - Now check to see if their plan has been followed.
- Mechanical Engineering & Inspection
 - Monitor heaters, exchangers, cooling towers, etc.
 - Use PI to predict problems and be pro-active



Expanded Scope - AFTER

- Laboratory
 - Lab data is stored in PI
 - Operations pulls in lab data to update APC inferentials.
 - Custom DCS graphic to accept or reject sample
- Accounting
 - Instead of reading strip charts, now use PI data
 - Greatly reduces time spent creating end of month reports.



Expanded Scope - AFTER

- Upper Management
 - They like the new overviews
 - In process: creating metrics that show the health and profitability of the refinery by glancing at a few numbers.



Future Plans...

- Refinery Report
 - Management (Tier 1)
 - Daily Shift Supervisor Report (Tier 2)
 - Engineering Report (Tier 3)
- Mass Balance
 - Simple with use of ACE
 - Reconciliation with Sigmafine



Future Plans... continued

- Training
 - Needs assessment
 - Needs-based training modules
 - PI system overview
 - ProcessBook basics
 - ProcessBook advanced
 - DataLink basics
 - DataLink advanced



Summary

- Two examples of an increase of usefulness and scope.
 - Improvements in licensed product use.
 - Made graphics user friendly
 - Gave ownership to appropriate people
 - Expanded Scope
 - Demonstrated the usefulness
 - Showed the benefits
 - Future Plans





THANK YOU!

John D. Ropp

John.D.Ropp@ConocoPhillips.com

Patrick Ziegler

pziegler@ConocoPhillips.com

 **ConocoPhillips**