



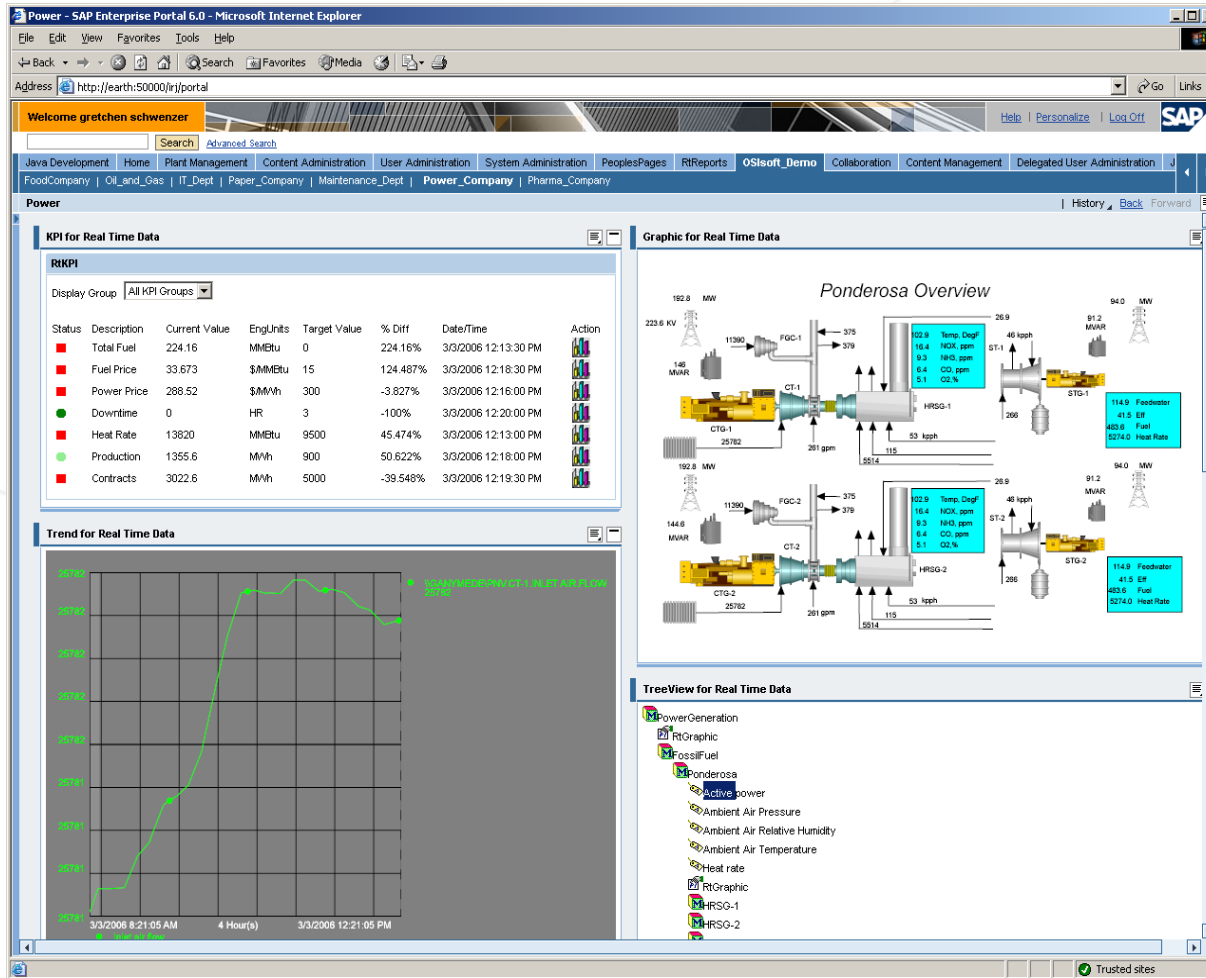
Thin Clients RtPM Business Package

Certified for SAP NetWeaver™

Dr. Gretchen Schwenzer
OSISOFT, Inc.



Unified View of the Enterprise



How can I view manufacturing data in conjunction with business data from SAP in the corporate SAP Portal?

VALUE NOW, VALUE OVER TIME



Pain Points

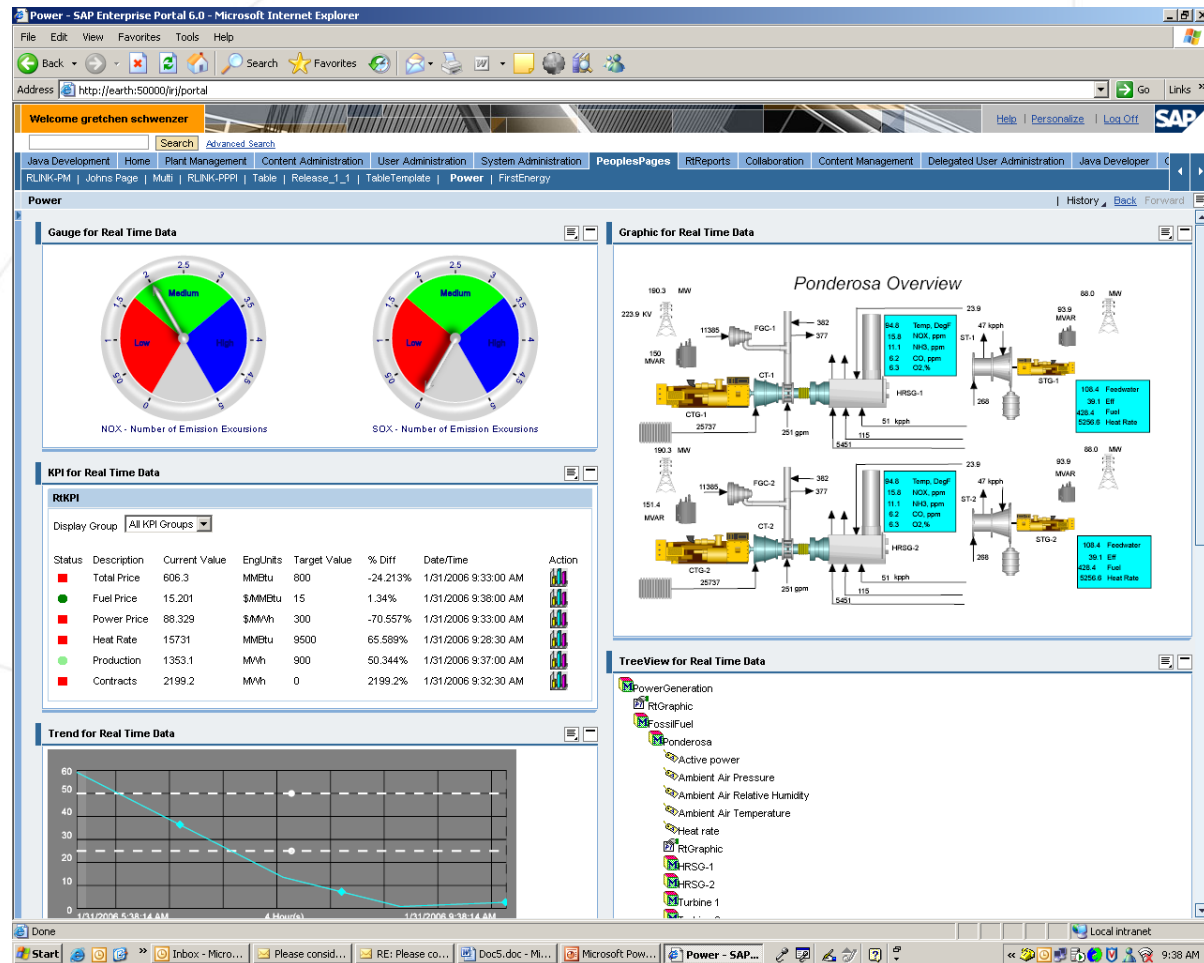
- How can I get process data on the SAP Portal with no programming
- How can I do ad-hoc analysis of manufacturing from the SAP Portal
- How can I integrate manufacturing data with enterprise data
- Global view of manufacturing operations

VALUE NOW, VALUE OVER TIME



RtPM Business Package for the SAP Portal

- Business Package
 - Combination of Roles, Pages and iViews for process data
 - Built upon SAP Portal 6 SP 11 and higher
 - End user configurable
 - Supports Multiple business functions
 - Customer incorporates into many applications including 3rd party
 - Complements SAP Offering

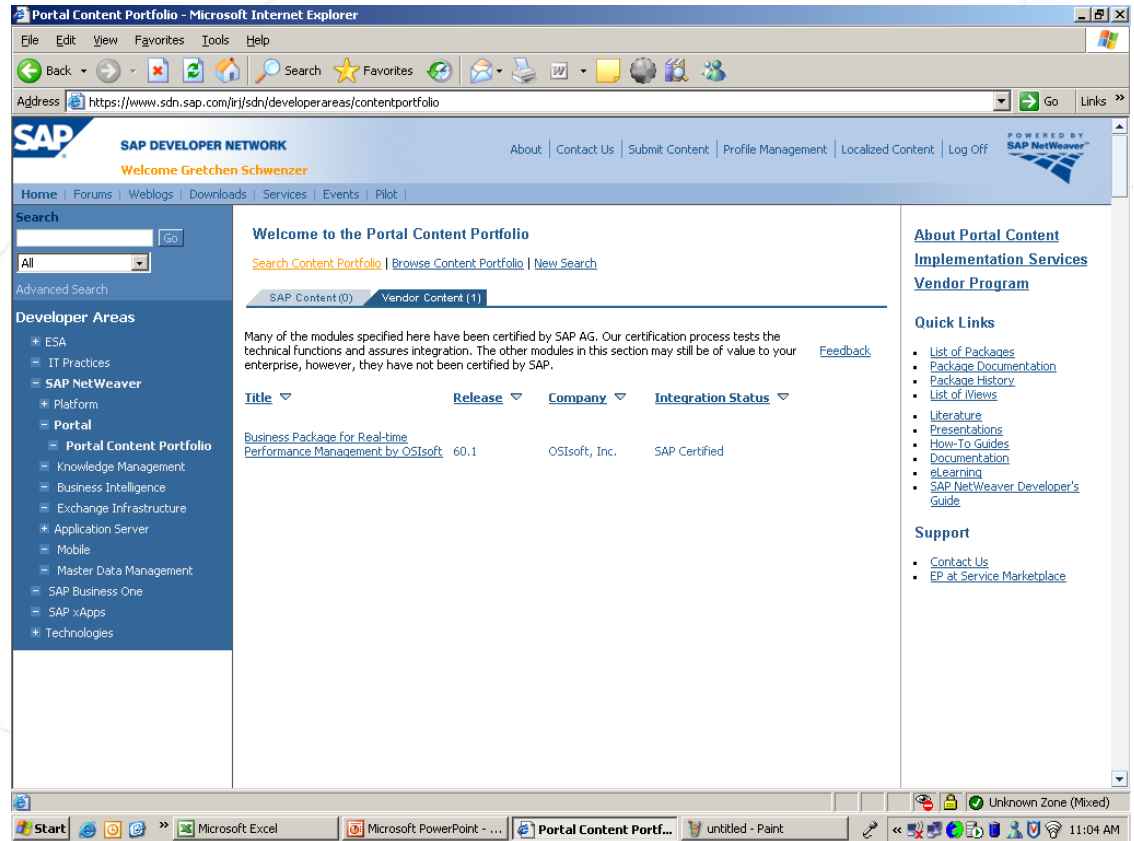


VALUE NOW, VALUE OVER TIME



Certified Business Package

- Certified by SAP Interface Software for SAP NetWeaver TM Advertised on SAP SDN website
- Namespace com.osisoft.pct.RtPM
- Support Branding, and Single Sign-on and personalization
- Eventing between iViews
 - Composite application development
- Supports any platform the SAP Portal runs on

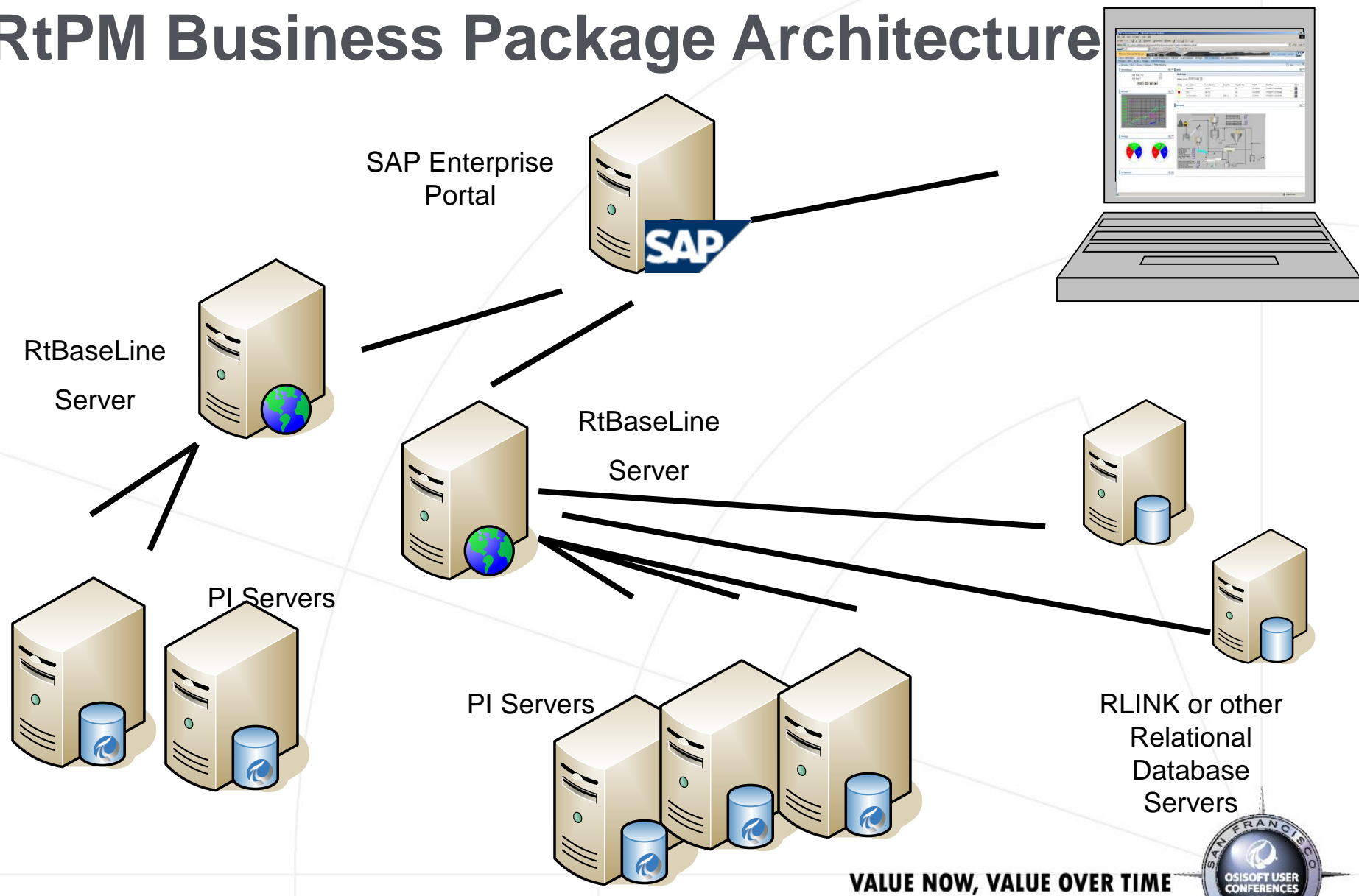


SAP® Certified Integration

VALUE NOW, VALUE OVER TIME



RtPM Business Package Architecture



VALUE NOW, VALUE OVER TIME



Requirements

- RtBaseLine Server
 - Windows Server 2003
 - Windows SharePoint Services
 - MSDE 2000 (can be on separate box)
 - Write access to a PI System
 - RtBaseline Services
 - Machine Sizing
 - Sized as a function of the number of users
 - E.g., 200 users
 - Dual P4, 2GB Ram, 2 GB Disk space (NTFS only)
- Client Side
 - Requires compatible SVG Viewer (currently Adobe SVG Viewer)
 - Internet Explorer 6.0 SP1
 - No ActiveX downloads
 - Machine Sizing
 - Windows 2000 or XP
 - Pentium III or higher
 - 256 to 512MB of RAM recommended
- SAP Portal
 - 6.0 SP11>
 - NetWeaver 4.0
 - Any NetWeaver operating system

VALUE NOW, VALUE OVER TIME



Demo

RtPM Business Package

Basic Building Blocks

[FR-03-01C-Schwenzer-iViews-Overviewdemo-uc2006.exe](#)

VALUE NOW, VALUE OVER TIME



Basic Set of iViews

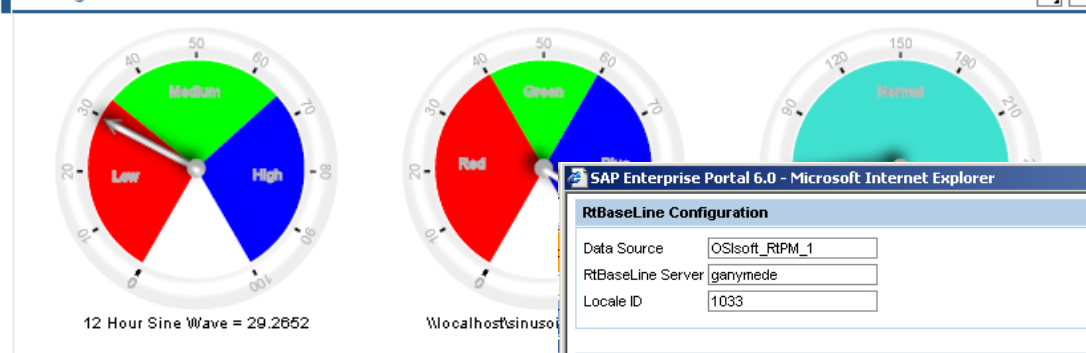
- RtActiveView
- RtGauge
- RtGraphic
- RtKPI
- RtTable
- RtTableTemplate
- RtTagSearch
- RtTimeRange
- RtTimeSeries
- RtTreeView
- RtTrend
- RtValues

VALUE NOW, VALUE OVER TIME



RtGauge

RtGauge



- Personalization
 - User Defined
 - Fixed Standard Page

User Definable Gauge

Vertical or Horizontal orientation

Multiple zones completely customizable

Events to other iViews and subscribes to events

The screenshot shows the SAP Enterprise Portal 6.0 - Microsoft Internet Explorer interface. The main window displays the RtGauge configuration interface, which is divided into several sections:

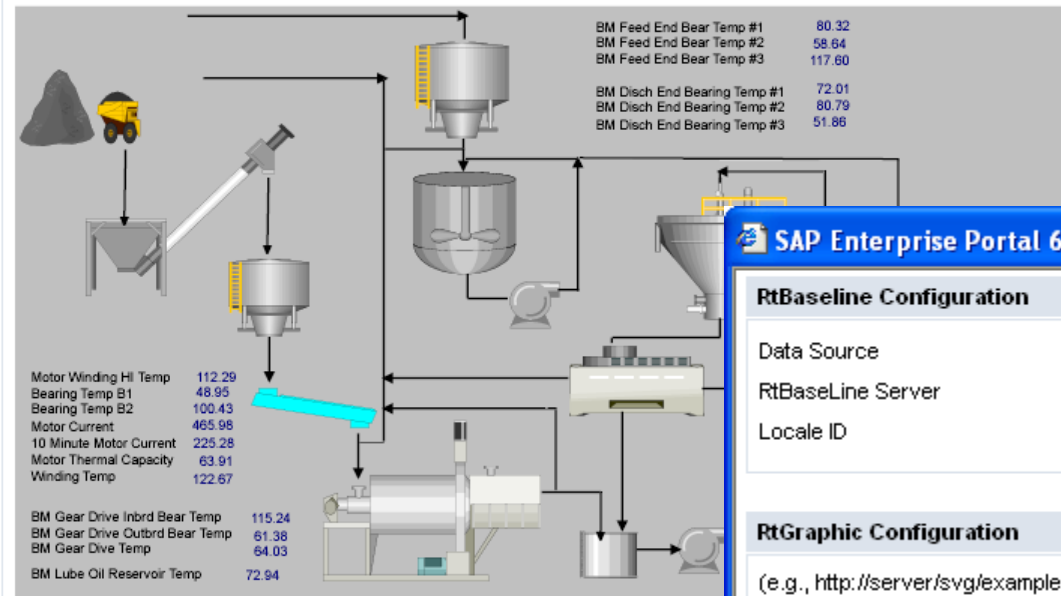
- RTBaseLine Configuration:** Data Source (OSIsoft_RtPM_1), RTBaseLine Server (ganymede), Locale ID (1033).
- Auto Update:** ☒ Auto Update, Update Interval (15) Seconds.
- Format:** Number Format (General), Bad Data Color (Red), Number of Zones (3), ☒ Blink, ☒ Percentage Zone Setting, Label (High), Color (Blue), Total Scale Percentage (40), Low Value (60), High Value (100), Dial Gauge Size (180).
- Gauge Tags Configuration:** (e.g., Wocalhost\sinusoid), Add Tag, Delete Tag, Multiple gauge orientation (Horizontal, ☒ Vertical).
- Legend:** ☒ Tag Name, ☐ Engineering Units, ☐ Description, ☐ Current Value.
- Scale:** Scaling Factor (1), Minimum Scale (Database, Custom), Maximum Scale (Database, Custom).
- Settings:** Base Angle (60), Text Color (DarkBlue), Face Color (LightGray), Background Color (LightGray), Save, Cancel.

VALUE NOW, VALUE OVER TIME



RtGraphic

RtGraphic



- Personalization
 - User Defined
 - Fixed Standard Page

User Designed

Updates 15 seconds

Symbols Event to other iViews

Receives SVG filename events from RtTreeView

Values Event to other iViews

Multistate Values

SAP Enterprise Portal 6.0 - Microsoft Internet Explorer

RtBaseline Configuration

Data Source: OSIssoft_RtPM_1
RtBaseLine Server: GANYMEDE
Locale ID: 1033

RtGraphic Configuration

(e.g., http://server/svg/example.svg or c:\program files\pipco\rtwebparts\svg\example.svg)
Graphic File Name: http://ganymede/rtwebpar
Height: 400 Width: 600
☒ Auto Update
Update every 15 seconds

Save Cancel

VALUE NOW, VALUE OVER TIME



RtKPI

RtPowerKPI

RtKPI Page

Display Group: All KPI Groups

Status	Description	Current Value	EngUnits	Target Value	% Diff	Date/Time	Action
■	Total Fuel	510.33	MMBtu	900	-43.297%	4/29/2005 1:37:30 PM	
■	Fuel Price	34.945	\$/MMBtu	15	132.9%		
■	Power Price	244.02	\$/MWh	300	-18.66%		
●	Downtime	0	HR	3	-100%		
●	Heat Rate	7922.1	MMBtu	9500	-16.60%		
●	Production	1378.2	MWh	900	53.13%		
■	Contracts	1755	MWh	5000	-64.9%		

- Personalization
 - User Defined
 - Fixed Standard Page

User Definable KPI

Updates and continuous alarm checking second timeframe

Multi-state (5) alarm regions per value

Events to other iViews for trending

SAP Enterprise Portal 6.0 - Microsoft Internet Explorer

RTBaseline Configuration

Data Source: OSIssoft_RPM_1
 RTBaseLine Server: Ganymede
 Locale ID: 1033

New Tag

(e.g., Wlocalhostsinusoid)

Add Tag

RtKPI Configuration

Wlocalhostsinusoid

Delete Tag

Lower Limit: 0, 25, 50, 75, 100
 Upper Limit: 25, 50, 75, 100, 0
 Color: Silver, Salmon, Red, SkyBlue, Red
 Icon:

Description: Sample Data, Target Value: 25, Group: All KPI Groups

Save Cancel

VALUE NOW, VALUE OVER TIME



RtTrend

RtTrend_1



- Personalization
 - User Defined
 - Fixed Standard Page

SAP Enterprise Portal 6.0 - Microsoft Internet Explorer

RtBaseLine Configuration

Data Source: OSisoft_RPM_1
 RtBaseLine Server: Ganymede
 Date Format: MM/yyyy
 Locale ID: 1033

Appearance

Height: 400
 Width: 600

Vertical Scale

☐ Multiple Vertical Scales

Minimum Scale	Maximum Scale
<input checked="" type="radio"/> Autorange <input type="radio"/> Database <input type="radio"/> Custom <input type="text" value="0"/>	<input checked="" type="radio"/> Autorange <input type="radio"/> Database <input type="radio"/> Custom <input type="text" value="100"/>

Horizontal Scale

Time Scale: Full time stamp
 Time Label: Duration

Trace Configuration

\\localhost\\sinusoid (e.g., \\localhost\\sinusoid)
 \\localhost\\sinusoid
 \\ganymede\\inc.iss.pk.oee.utl
 \\ganymede\\inc.iss.pk.oee.qty
 \\ganymede\\pp.ds.mtl-dtower1

☐ Data Markers

Add Tag
 Delete Tag

Legend

☒ Tag Name
☒ Description
☒ Current Value
☐ Engineering Units

Time Configuration

Start Time: *4h End Time: *
☒ Auto Update Update Interval: 15 Seconds

Upper and Lower Limits

Lower Limit: 35
 Upper Limit: 75

Save Cancel

Cursors and Trend Bars

Events Received and raised

Limits and ranges

Legends labels

Continuous Updates seconds

VALUE NOW, VALUE OVER TIME



Demo

RtPM Business Package

Relational Database Query

[FR-03-01C-Schwenzer-iViews-Tabledemo.exe](#)

VALUE NOW, VALUE OVER TIME



RtTableTemplate

RtTable Template Configuration

New Save Copy Delete Template

Saved Private Templates

- JoeTest1
- MikesMeasurementDoc
- PrivateTemplate9
- Table Test5
- TableTest2
- test1

Saved Public Templates

- e1
- e2
- e3
- e4
- ElenaFinalExam
- OLEDBTest

Template Properties

Template Name: Table Test5

☒ Private Template

Author: OSIssoft2

Creation Date: 12/21/2005 16:43:04

Modified Date: 12/30/2005 10:47:47

Data Source Type: ODBC

Query Settings

Connection String
Driver={SQL Server}; Server=earth; uid=RLINKUser; pwd=RLINK; database=Northwind

Check Connection

Query
select * from Orders

Check Syntax

Placeholders

No.	Display Name	Type	Value
-----	--------------	------	-------

Custom Events

Namespace: com.osissoft.pct.RtPM Event Name: MyClickEvent

Column Configuration

OrderID
CustomerID
EmployeeID
OrderDate
RequiredDate
ShippedDate
ShipVia
Freight
ShipName
ShipAddress
ShipCity
ShipRegion

Configuration Cond. Formatting Hyperlink

Heading Text Behavior Number Format

Default Database

Private and Public Templates

Conditional Formatting

Events Broadcast Defineable

SAP Enterprise Portal 6.0 - Microsoft ...

RtBaseline Configuration

Data Source: OSIssoft_RtPM_1

RtBaseLine Server: ganymede

Module Database Server: ganymede

Save Cancel

VALUE NOW, VALUE OVER TIME



RtTable

RtTable

Listener On ☒

<< < > >>

OrderID	CustomerID	EmployeeID	OrderDate	RequiredDate	ShippedDate	ShipVia
10248	VINET	5	7/4/1996 12:00:00 AM	8/1/1996 12:00:00 AM	7/16/1996 12:00:00 AM	
10249	TOMSP	6	7/5/1996 12:00:00 AM	8/16/1996 12:00:00 AM	7/10/1996 12:00:00 AM	
10250	HANAR	4	7/8/1996 12:00:00 AM	8/5/1996 12:00:00 AM	7/12/1996 12:00:00 AM	
10251	VICTE	3	7/8/1996 12:00:00 AM	8/5/1996 12:00:00 AM	7/15/1996 12:00:00 AM	
10252	SUPRD	4	7/9/1996 12:00:00 AM	8/6/1996 12:00:00 AM	7/11/1996 12:00:00 AM	

Showing

- Personalization
 - User Defined
 - Fixed Standard Page

SAP Enterprise Portal 6.0 - Microsoft Internet Explorer

RtBaseline Configuration Data Source: <input type="text" value="OSIsoft_RtPM_1"/> RtBaseline Server: <input type="text" value="ganymede"/> Locale ID: <input type="text" value="1033"/>	Advanced Table Configuration Module DB Server: <input type="text" value="ganymede"/> Select a Configuration: <input type="text" value="PlaceholderTest8"/> Rows to display: <input type="text" value="5"/> <input checked="" type="checkbox"/> Include Advanced Table Configuration				
Table Column Configuration <table> <tr> <td>Available Columns</td> <td>Selected Columns</td> </tr> <tr> <td> <input type="text" value="Tag"/> </td> <td> <input type="text" value="Sample"/> <input type="text" value="StartTime"/> <input type="text" value="EndTime"/> <input type="text" value="Actual_Value"/> </td> </tr> </table>		Available Columns	Selected Columns	<input type="text" value="Tag"/>	<input type="text" value="Sample"/> <input type="text" value="StartTime"/> <input type="text" value="EndTime"/> <input type="text" value="Actual_Value"/>
Available Columns	Selected Columns				
<input type="text" value="Tag"/>	<input type="text" value="Sample"/> <input type="text" value="StartTime"/> <input type="text" value="EndTime"/> <input type="text" value="Actual_Value"/>				
Time Configuration Start Time: <input type="text" value="*-2h"/> End Time: <input type="text" value="*"/> Auto Update: <input checked="" type="checkbox"/> Update Interval: <input type="text" value="15"/> Seconds					
Parameters Text: <input type="text" value="pH Level Lab Data 24-Feb"/> Lower_Limit: <input type="text" value="50"/> Actual_Value: <input type="text" value="7"/>					
<input type="button" value="Save"/> <input type="button" value="Cancel"/>					

Responds to Time Events
Conditional Formating
Broadcast Events

VALUE NOW, VALUE OVER TIME



Demo

RtPM Business Package

Plant Maintenance

FR-03-01C-

SchwenzeriViewsMaintenance.exe

VALUE NOW, VALUE OVER TIME



Supplement RLINK PM

- RtRLINKAlarmVals
- RtRLINKFunctionalLocation
- RtRLINKFunctionalLocationSymbol
- RtRLINKMeasurementDocs
- RtRLINKPlantUnit
- RtRLINKPointGroupFromFunctionalLocation
- RtRLINKTags

VALUE NOW, VALUE OVER TIME



Demo

RtPM Business Package

Production Information

[FR0301CSchwenzeriViewsProduction.exe](#)

VALUE NOW, VALUE OVER TIME



Supplement RLINK PPPI

- RtRLINKBOM
- RtRLINKMaterialTags
- RtRLINKMSEL
- RtRLINKMSHD
- RtRLINKPhase
- RtRLINKPlant
- RtRLINKPointGroupRtRLINKRecipe
- RtRLINKTags

VALUE NOW, VALUE OVER TIME



Kodak

- Goal
 - Monitor Energy Performance company wide
 - Only Portal in company is SAP Portal
- Implementation
 - Installed themselves
 - Webex training and support
 - Resolved https issues with their help
- Presenting at SF User Conference

VALUE NOW, VALUE OVER TIME



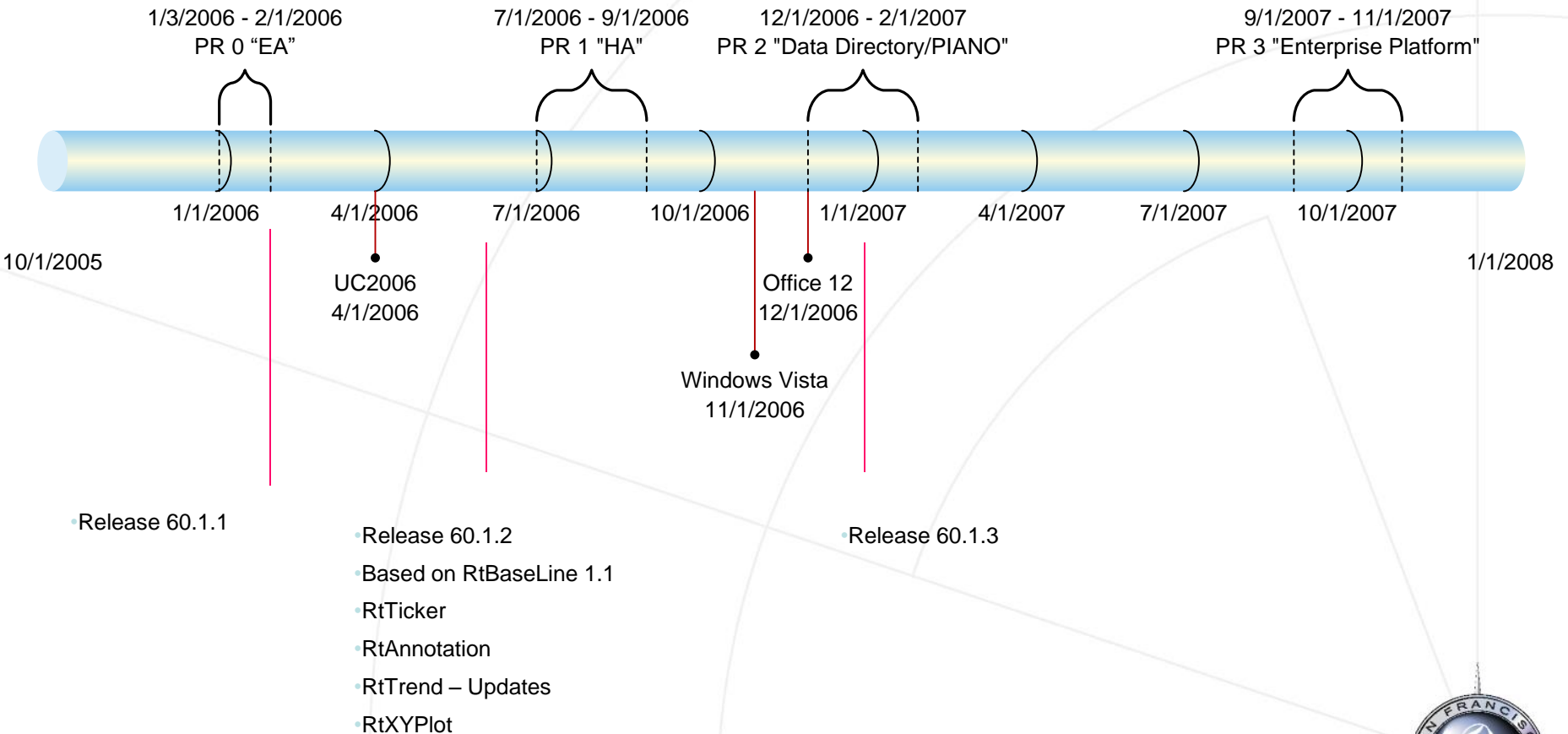
Key Differentiators

- Operates in real time (seconds) ie. Displays continuously update
- Performance and security of operational systems maintained
- Events published and subscribed to
 - EPCM.raiseEvent("com.osisoft.pct.RtPM","AdhocSymbol",
symbolname)
 - EPCM.subscribeEvent("com.osisoft.pct.RtPM","AdhocTags",
adhocTags)
 - 3rd parties are integrating with OSIsoft iViews and namespace
events
- Authoring tool for Displays - ProcessBook
- Configurable Application
- Displays can have fixed content or they can be dynamic
- Real-time web services and Real-time composites to enable an
enterprise wide business platform

VALUE NOW, VALUE OVER TIME



Platform Release Timeline



VALUE NOW, VALUE OVER TIME



Summary

- Installed and operational in < 3 hours
- Unified view of the enterprise – business and multi site manufacturing facilities in single view
- Demo pod
- Learning Lab

VALUE NOW, VALUE OVER TIME



SEA: RtPM Business Package



Simple

- Easily installed
- End user configurable and designed



- **Enterprise Aware**

- Across enterprise visualization integrated with other Enterprise data



- **Highly Available**

- Information whenever, wherever, and however

VALUE NOW, VALUE OVER TIME

