

UC2006 OSISOFT USER CONFERENCE

VALUE NOW, VALUE OVER TIME



OSISOFT Thin Clients

RtWebParts and RtBaselineServices

Jay Lakumb
OSISOFT, Inc.

The Portal Payoff

- Communication & Collaboration
 - Challenge: Bring together distributed teams
 - Benefit: Increased productivity through information sharing and document collaboration, Locate distributed information quickly
- Data Transparency
 - Challenge: No visibility into operational performance
 - Benefit: Single source of information, Consistent views of operational data, Secure access to data, Ability to react in real-time to changes
- One Version of the Truth
 - Challenge: Many versions of the same data
 - Benefit: Reduced variability in reporting, Confidence in validated data through version control, Cross time zones and geographic boundaries
- Cost Effective
 - Challenge: High TCO for client applications
 - Benefit: Centralized server administration, Improved performance, reliability, and scalability on a server platform

VALUE NOW, VALUE OVER TIME



SharePoint Products & Technologies

- Windows SharePoint Services
 - WSS provides the foundation services on which large numbers of team web sites are created and maintained.
- SharePoint Portal Server 2003
 - SPS 2003 extends WSS with functionality for building and managing an integrated, enterprise-scale portal solution.

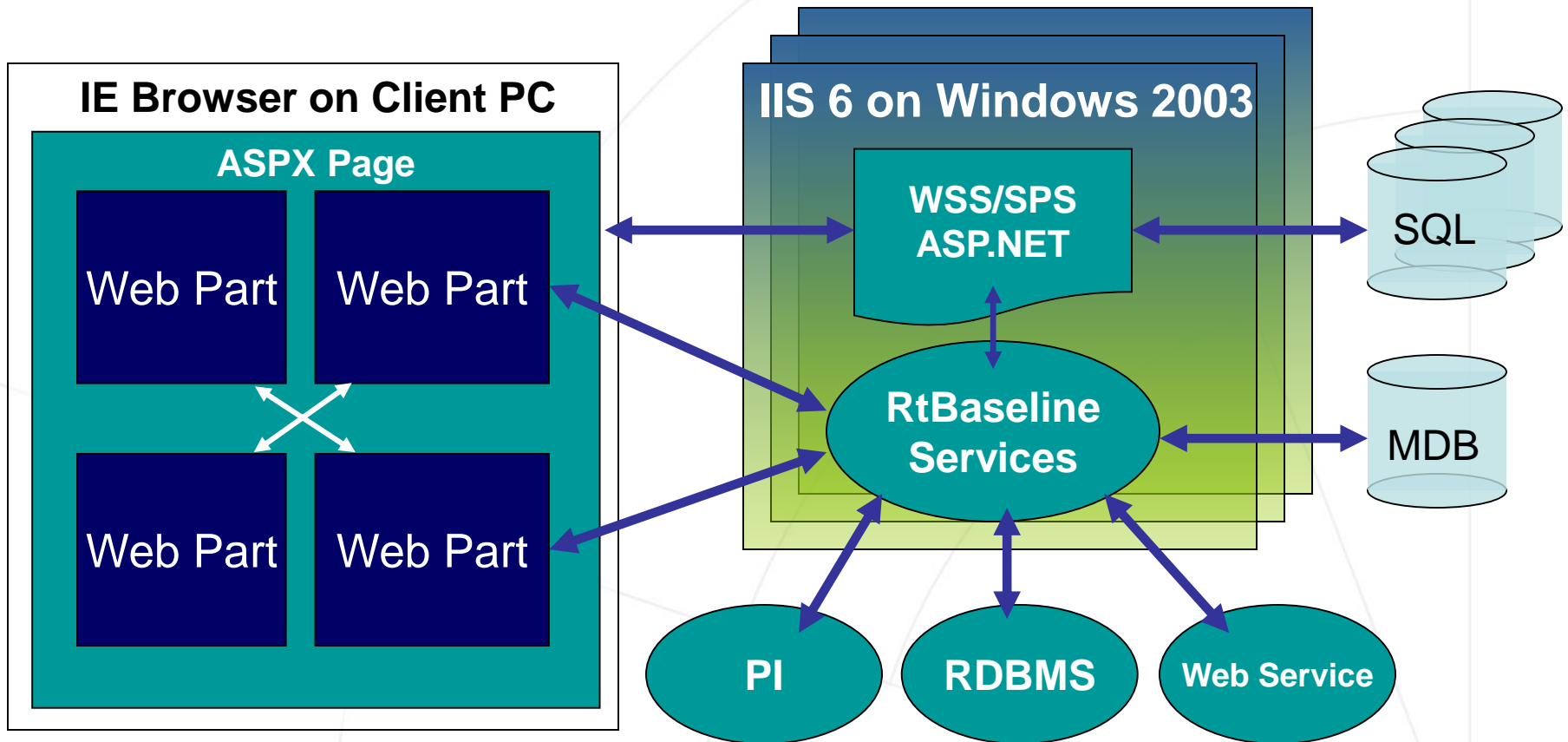


Provides new ways to connect people, teams and knowledge across business processes

VALUE NOW, VALUE OVER TIME



Architecture

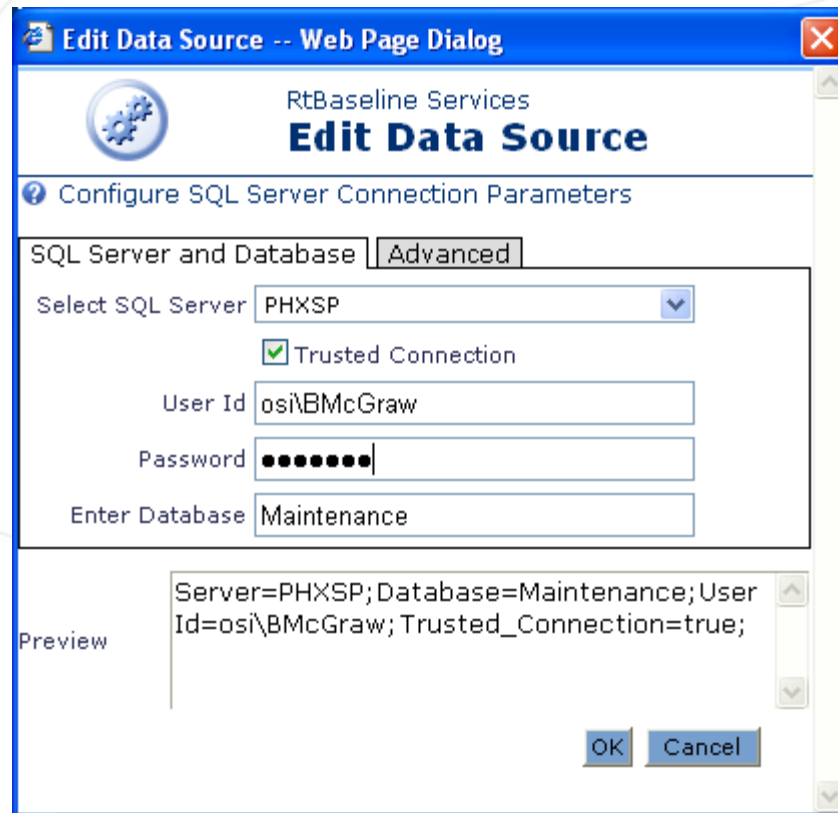


VALUE NOW, VALUE OVER TIME



RtBaseline Services

- Securely gathers, organizes, caches and distributes data from throughout the enterprise.
 - PI Data, of course
 - Relational Data
 - ODBC
 - OLEDB
 - PI OLEDB
 - SQL Server
 - Oracle
 - Web Services Data

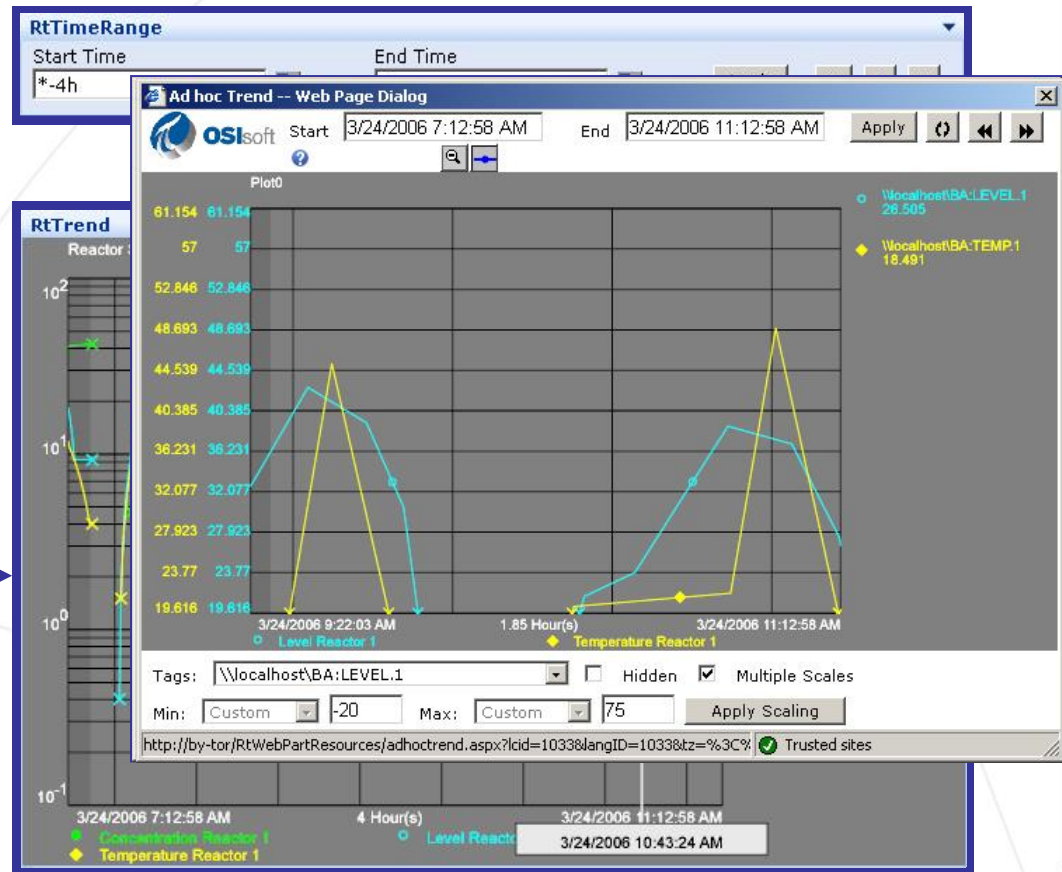
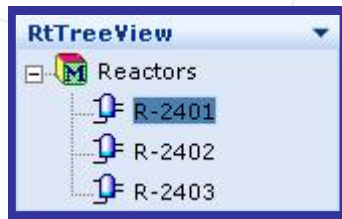


VALUE NOW, VALUE OVER TIME



RtWebParts Ex. 1

- RtTimeRange
- RtTrend
- RtTreeView

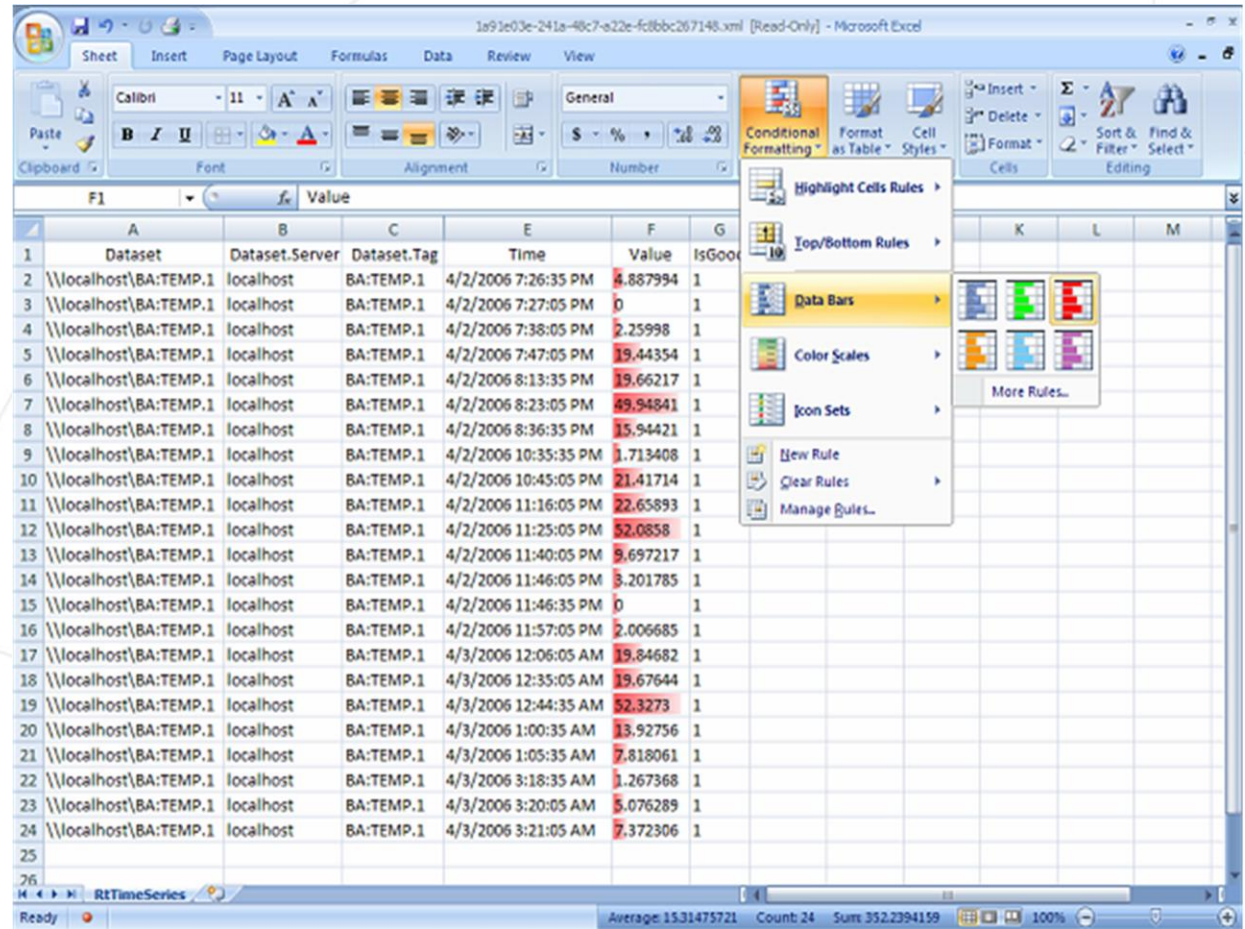


VALUE NOW, VALUE OVER TIME



RtWebParts Ex. 2

- RtTable
- RtValues
- RtTimeSeries
- RtGauge



The screenshot shows a Microsoft Excel spreadsheet with a table of data. The table has columns labeled A through G. Column A is 'Dataset', B is 'Dataset.Server', C is 'Dataset.Tag', E is 'Time', F is 'Value', and G is 'IsGood'. The 'Value' column contains numerical data, and the 'IsGood' column contains binary values (1 or 0). A 'Conditional Formatting' menu is open over the 'Value' column, showing options like 'Highlight Cells Rules', 'Top/Bottom Rules', 'Data Bars', 'Color Scales', 'Icon Sets', 'New Rule', 'Clear Rules', and 'Manage Rules...'. The 'Data Bars' option is selected, and a sub-menu is visible showing three color bar styles: blue, green, and red. The status bar at the bottom shows 'Average: 15.31475721', 'Count: 24', 'Sum: 352.2394159', and '100%'.

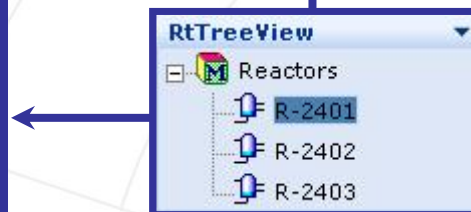
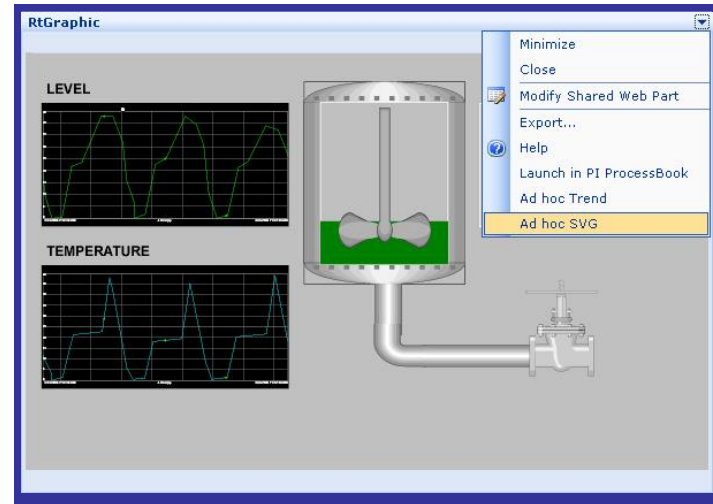
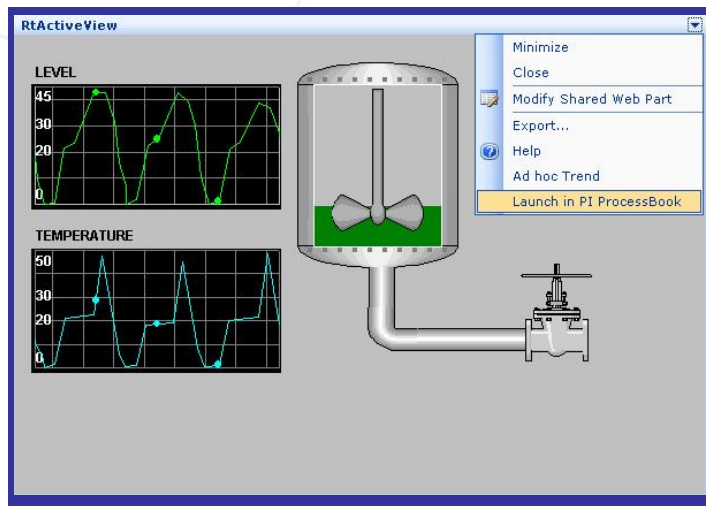
	A	B	C	E	F	G
1	Dataset	Dataset.Server	Dataset.Tag	Time	Value	IsGood
2	\\localhost\BA:TEMP.1	localhost	BA:TEMP.1	4/2/2006 7:26:35 PM	4.887994	1
3	\\localhost\BA:TEMP.1	localhost	BA:TEMP.1	4/2/2006 7:27:05 PM	0	1
4	\\localhost\BA:TEMP.1	localhost	BA:TEMP.1	4/2/2006 7:38:05 PM	2.25998	1
5	\\localhost\BA:TEMP.1	localhost	BA:TEMP.1	4/2/2006 7:47:05 PM	19.44354	1
6	\\localhost\BA:TEMP.1	localhost	BA:TEMP.1	4/2/2006 8:13:35 PM	19.66217	1
7	\\localhost\BA:TEMP.1	localhost	BA:TEMP.1	4/2/2006 8:23:05 PM	49.94841	1
8	\\localhost\BA:TEMP.1	localhost	BA:TEMP.1	4/2/2006 8:36:35 PM	15.94421	1
9	\\localhost\BA:TEMP.1	localhost	BA:TEMP.1	4/2/2006 10:35:35 PM	1.713408	1
10	\\localhost\BA:TEMP.1	localhost	BA:TEMP.1	4/2/2006 10:45:05 PM	21.41714	1
11	\\localhost\BA:TEMP.1	localhost	BA:TEMP.1	4/2/2006 11:16:05 PM	22.65893	1
12	\\localhost\BA:TEMP.1	localhost	BA:TEMP.1	4/2/2006 11:25:05 PM	52.0858	1
13	\\localhost\BA:TEMP.1	localhost	BA:TEMP.1	4/2/2006 11:40:05 PM	9.697217	1
14	\\localhost\BA:TEMP.1	localhost	BA:TEMP.1	4/2/2006 11:46:05 PM	3.201785	1
15	\\localhost\BA:TEMP.1	localhost	BA:TEMP.1	4/2/2006 11:46:35 PM	0	1
16	\\localhost\BA:TEMP.1	localhost	BA:TEMP.1	4/2/2006 11:57:05 PM	2.006685	1
17	\\localhost\BA:TEMP.1	localhost	BA:TEMP.1	4/3/2006 12:06:05 AM	19.84682	1
18	\\localhost\BA:TEMP.1	localhost	BA:TEMP.1	4/3/2006 12:35:05 AM	19.67644	1
19	\\localhost\BA:TEMP.1	localhost	BA:TEMP.1	4/3/2006 12:44:35 AM	52.3273	1
20	\\localhost\BA:TEMP.1	localhost	BA:TEMP.1	4/3/2006 1:00:35 AM	13.92756	1
21	\\localhost\BA:TEMP.1	localhost	BA:TEMP.1	4/3/2006 1:05:35 AM	7.818061	1
22	\\localhost\BA:TEMP.1	localhost	BA:TEMP.1	4/3/2006 3:18:35 AM	1.267368	1
23	\\localhost\BA:TEMP.1	localhost	BA:TEMP.1	4/3/2006 3:20:05 AM	5.076289	1
24	\\localhost\BA:TEMP.1	localhost	BA:TEMP.1	4/3/2006 3:21:05 AM	7.372306	1
25						
26						

VALUE NOW, VALUE OVER TIME



RtWebParts Ex. 3

- RtTreeView
- RtGraphic
- RtActiveView



?SelectedNodeTag=Reactors\R-2401

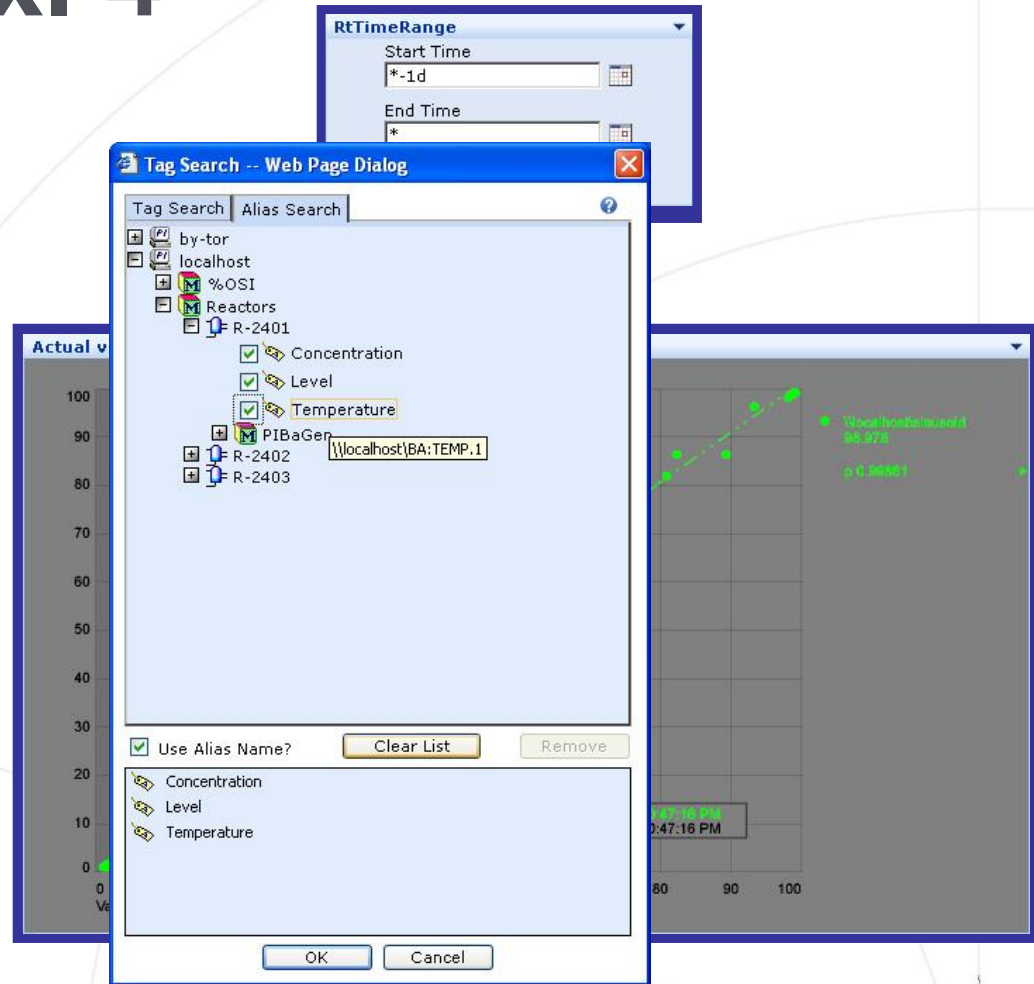
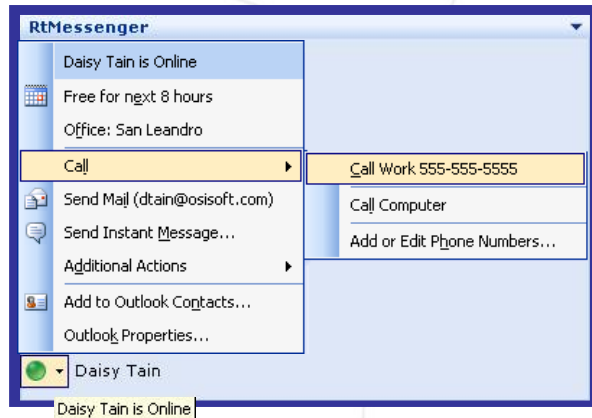
VALUE NOW, VALUE OVER TIME



RtWebParts Ex. 4

- RtTimeRange
- RtXYPlot
- RtMessenger

?StartTime=*-1d?EndTime=*



VALUE NOW, VALUE OVER TIME



Requirements

- Server Side

- Windows Server 2003 with IIS 6 and ASP.NET 1.1
- Windows SharePoint Services or SharePoint Portal Server
- SQL Server 2000 or MSDE
- Write access to a PI Server 3.3x or higher for configuration data
- Optional
 - Live Communications Server

- Client Side

- Internet Explorer 6
- Adobe SVG Viewer
- Windows or MSN Messenger
- Microsoft Office XP or 2003
- Optional
 - PI ProcessBook
 - PI ActiveView

~ Demo ~

- It's cool!
- What you will see
 - Both flavors of SharePoint
 - Admin pages for RtBaseline Services
 - Full gallery of RtWebParts

VALUE NOW, VALUE OVER TIME



Summary

Simple

- Provides a rich user experience
- Designed for rapid configuration



Enterprise Aware

- Secure access to data throughout the Enterprise
- Share and collaborate with the entire Enterprise



Highly Available

- Leverages the reliability, scalability and performance of SharePoint Technologies
- Centralized administration, no clients to maintain

What's Next?

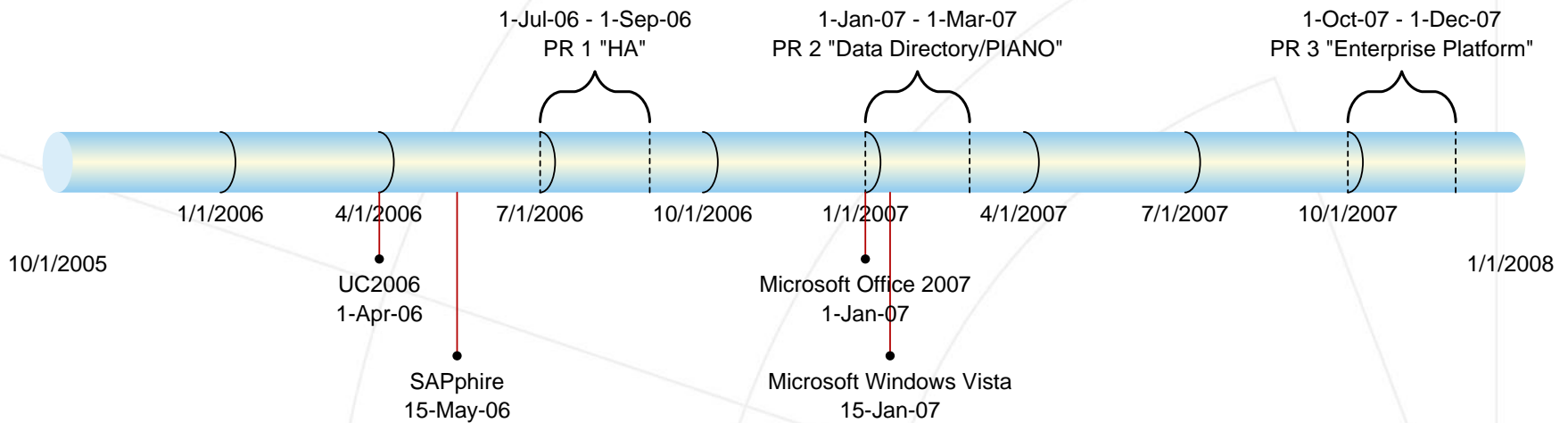
- Support for complex Web Service data sources
- More Web Parts
 - Data Directory (Foundation)
 - Charting (Spider/Radar, Bar, Pie, etc.)
 - Tag Search
 - Batch Search
 - Manual Data Entry
- Support the upcoming SharePoint 2007
 - Interaction with DataLink Server
 - Business Data Catalog
- Localization
- Performance
- License Monitoring

VALUE NOW, VALUE OVER TIME



Platform Release Timeline

Engineering Roadmap Initiatives and Events



VALUE NOW, VALUE OVER TIME



Resources / Q & A

- Microsoft SharePoint web site
 - <http://www.microsoft.com/sharepoint>
- SharePoint Products and Technologies Resource Kit
 - Microsoft Press: ISBN 0-7356-1881-X
 - Chapters online on Microsoft TechNet:
<http://www.microsoft.com/technet/prodtechnol/sppt/reskit>
- Windows SharePoint Services v. SharePoint Portal Server
 - Microsoft Knowledge Base article 830320:
<http://support.microsoft.com/default.aspx?scid=kb;EN-US;830320>
- Microsoft Office SharePoint Portal Server web site
 - <http://office.microsoft.com/sharepoint>
- SharePoint 2007 Team Blog
 - <http://blogs.msdn.com/sharepoint>
- OSIssoft Tech Support web site
 - http://techsupport.osisoft.com/support_rtwebparts.aspx

VALUE NOW, VALUE OVER TIME

