



Plant Management Information System in SECCO

Xuefeng Huang

Kate Yan, Charles Zhang

Shanghai SECCO Petrochemical Co.,Ltd

Agenda

- **SECCO introduction**
- **The objective of SECCO PMIS project**
- **The content of SECO PMIS**
- **Conclusion**

SECCO Introduction

- Shanghai SECCO Petrochemical Company Limited is jointly invested by



50%



30%



20%

- Total investment: 2.7 billion USD

- SECCO is by far one of the biggest petrochemical projects of joint venture in China. The joint venture is located in Shanghai Chemical Industrial Park (SCIP) covering an area of about 200 hectares.



VALUE NOW, VALUE OVER TIME



SECCO Location

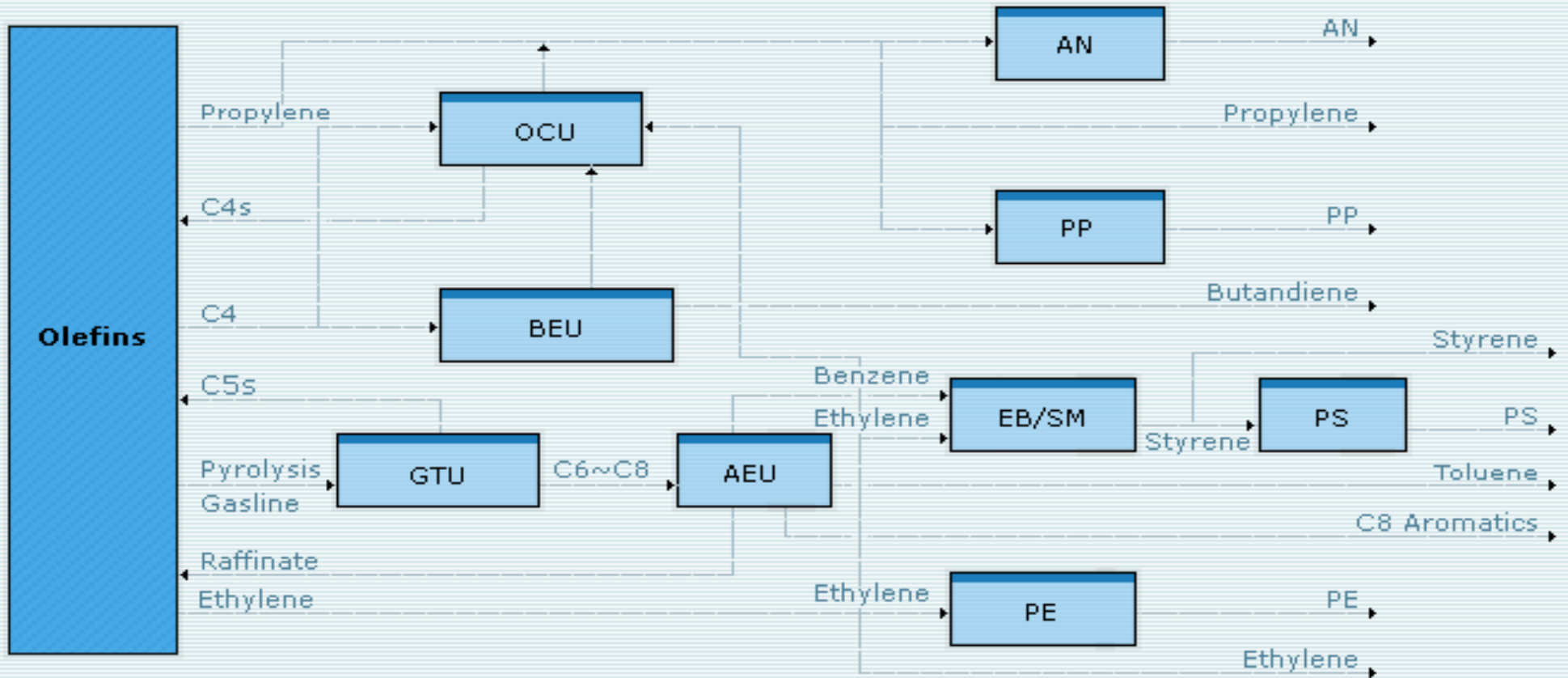
- Reclaimed land at Caojing, 15km from SPC Jinshan site within Shanghai Chemical Industry Park
- Chemical zone area larger than BASF Ludwigshafen site
- Planned as Shanghai chemical center with strong political support
- BASF, Huntsman, Bayer existing plans



VALUE NOW, VALUE OVER TIME



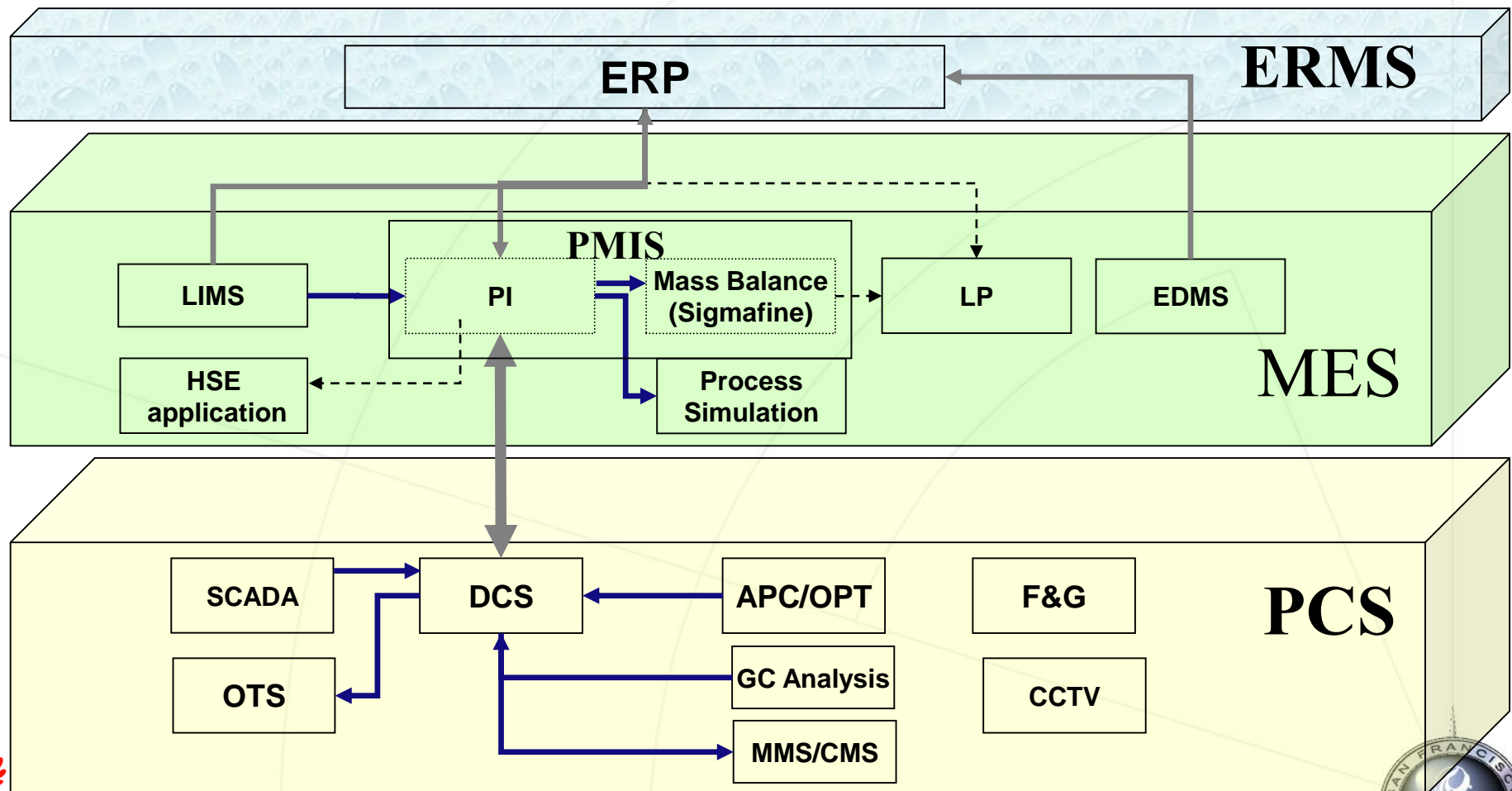
SECCO Process Overview



Object of PMIS

- Support the key business processes and functions associated with SECCO operations in the next 2-5 years.
- Provides for an efficient, timely and well coordinated manufacturing management
- Allows for logistics and distribution to better schedule their storage tank and feedstock delivery timing
- Accurate and timely calculation of costs of production
- Integrates common resources with best practice processes enabled, achieve greater cost savings
- Eliminates barriers between various operating functions through greater sharing of information resources

SECCO Application Architecture (now)

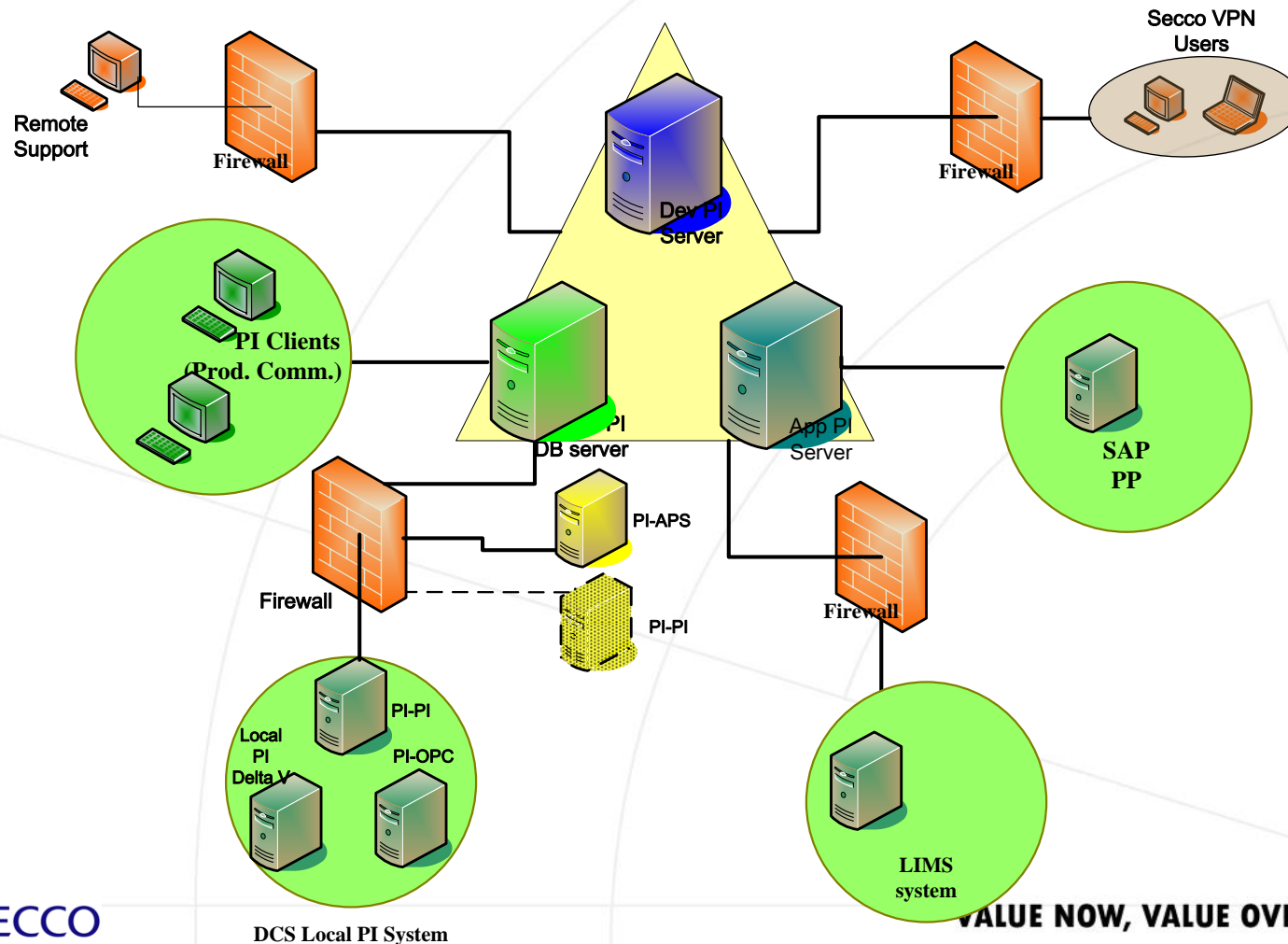


赛科 SECCO

VALUE NOW, VALUE OVER TIME



PI System Infrastructure



Main Page of PMIS

- MS SharePoint is used as a central repository to share the main graphics and reports



上海赛科石油化工有限公司

Shanghai SECCO Petrochemical Co., Ltd.



[PMIS Home 首页](#)
[PMIS Graphics 画面](#)
[PMIS Reports 报表](#)
[PMIS StaticReports静态报告](#)

Up to SECCO Intranet 赛科内部互联网



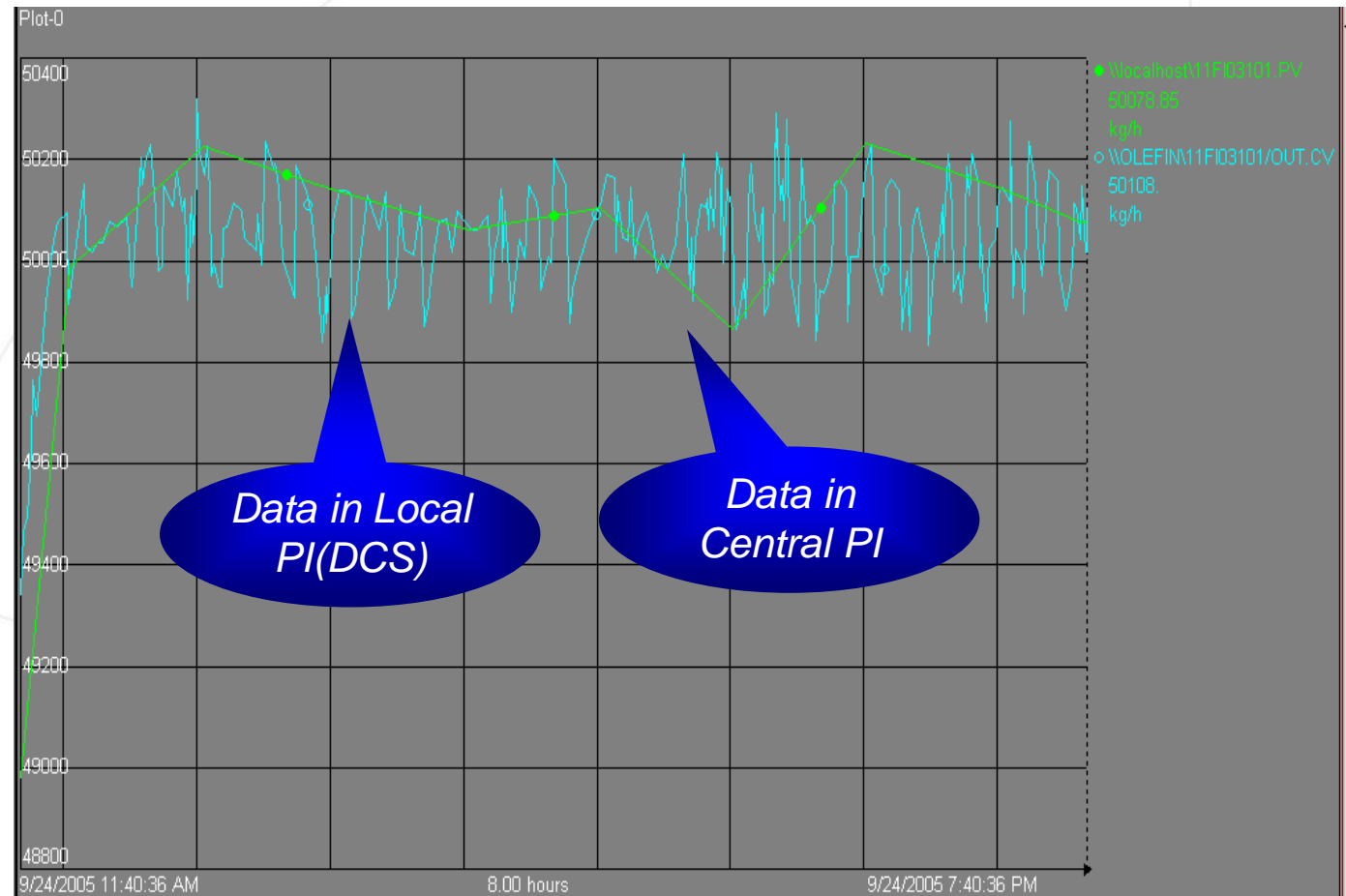
PMIS Home

Modify Shared Page ▼

<div>PMIS Graphics画面</div> <div> <div>HSSE</div> <div>健康、安全、保安、环境</div> </div> <div> <div>MENU</div> <div>菜单</div> </div> <div> <div>OLEFIN</div> <div>烯烃</div> </div> <div> <div>AEU</div> <div>◆AEU</div> <div>◆GTU</div> <div>BEU</div> <div>◆BEU</div> <div>◆OCU</div> <div>ETHYLENE</div> <div>◆Cracking</div> <div>◆Separating</div> <div>◆Utility</div> <div>OLEFIN PLANT</div> </div>	<div> <div>OM</div> <div>运行经理</div> </div> <div> <div>OSBL</div> <div>公用工程</div> </div> <div> <div>AN</div> </div> <div> <div>OSBL</div> </div> <div> <div>PS</div> <div>苯乙烯</div> <div>EBSM</div> <div>PS</div> </div> <div> <div>PO</div> <div>聚烯烃</div> <div>PE</div> <div>PHU</div> <div>PP</div> </div>	<div>PMIS Reports报表</div> <div> <div>HSSE</div> <div>健康、安全、保安、环境</div> </div> <div> <div>OLEFIN</div> <div>烯烃</div> </div> <div> <div>AEU</div> <div>◆AEU</div> <div>◆GTU</div> <div>BEU</div> <div>◆BEU</div> <div>◆OCU</div> <div>ETHYLENE</div> <div>◆Cracking</div> <div>◆Separation</div> <div>OLEFIN PLANT</div> <div>OM</div> <div>运行经理</div> </div>	<div> <div>OSBL</div> <div>公用工程</div> </div> <div> <div>AN</div> </div> <div> <div>OSBL</div> </div> <div> <div>PO</div> <div>聚烯烃</div> </div> <div> <div>PE</div> <div>◆PE</div> <div>◆PP</div> <div>PP</div> </div> <div> <div>PS</div> <div>苯乙烯</div> <div>EBSM</div> <div>PS</div> </div>	<div>StaticReports静态报告</div> <div> <div>HSSE</div> <div>健康、安全、保安、环境</div> </div> <div> <div>PO</div> <div>聚烯烃</div> </div> <div> <div>PE</div> </div> <div> <div>PP</div> </div> <div> <div>OLEFIN</div> <div>烯烃</div> </div> <div> <div>AEU</div> <div>BEU</div> <div>Ethylene</div> </div> <div> <div>PS</div> <div>苯乙烯</div> <div>EBSM</div> <div>PS</div> </div> <div> <div>OM</div> <div>运行经理</div> </div> <div> <div>OSBL</div> <div>公用工程</div> </div> <div> <div>AN</div> <div>OSBL</div> </div>
---	--	---	---	---

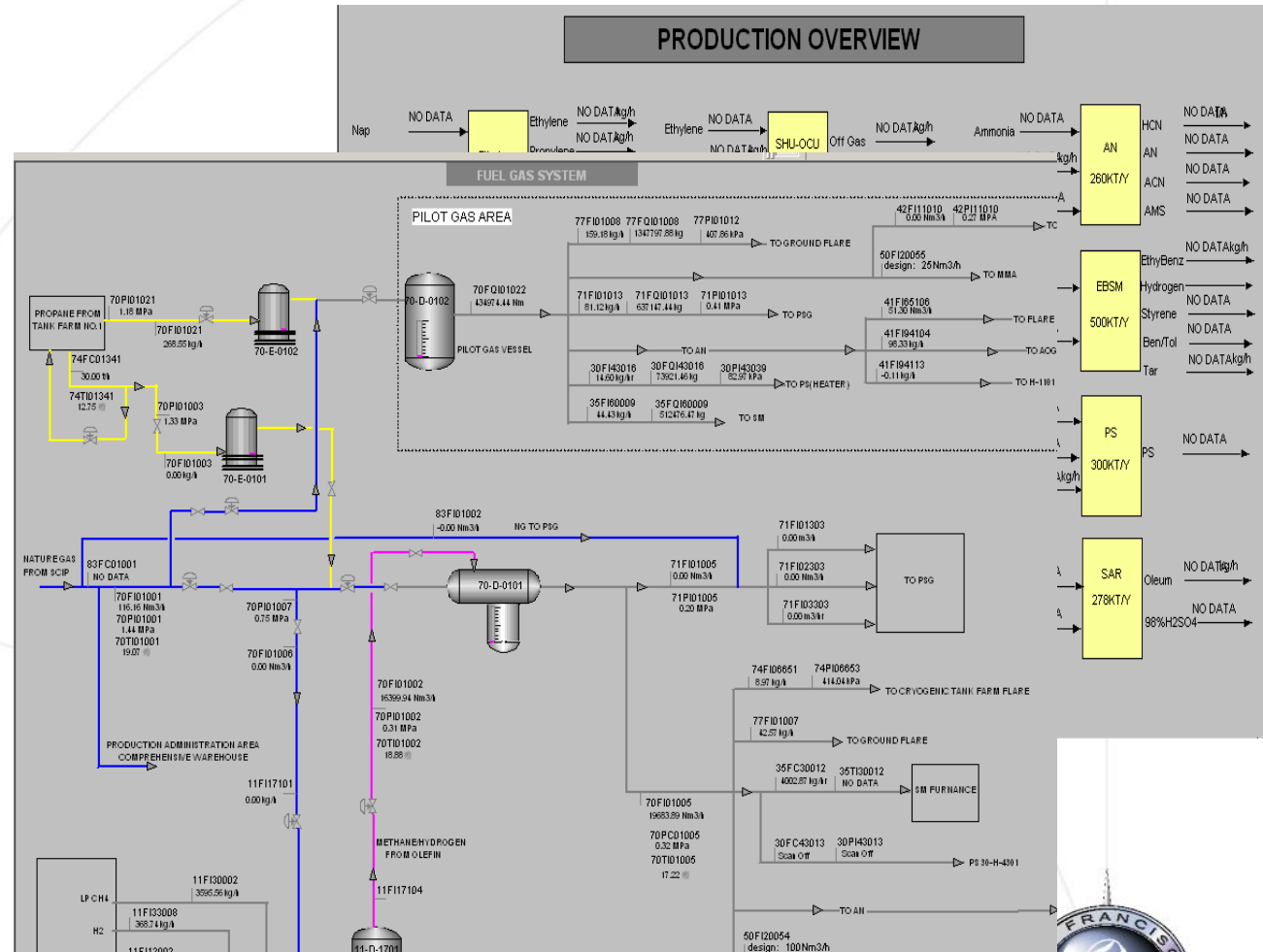
Different between Local PI and DCS

- Owing to different function demand, the 'compressing' is different in Local PI (DCS) and Central PI



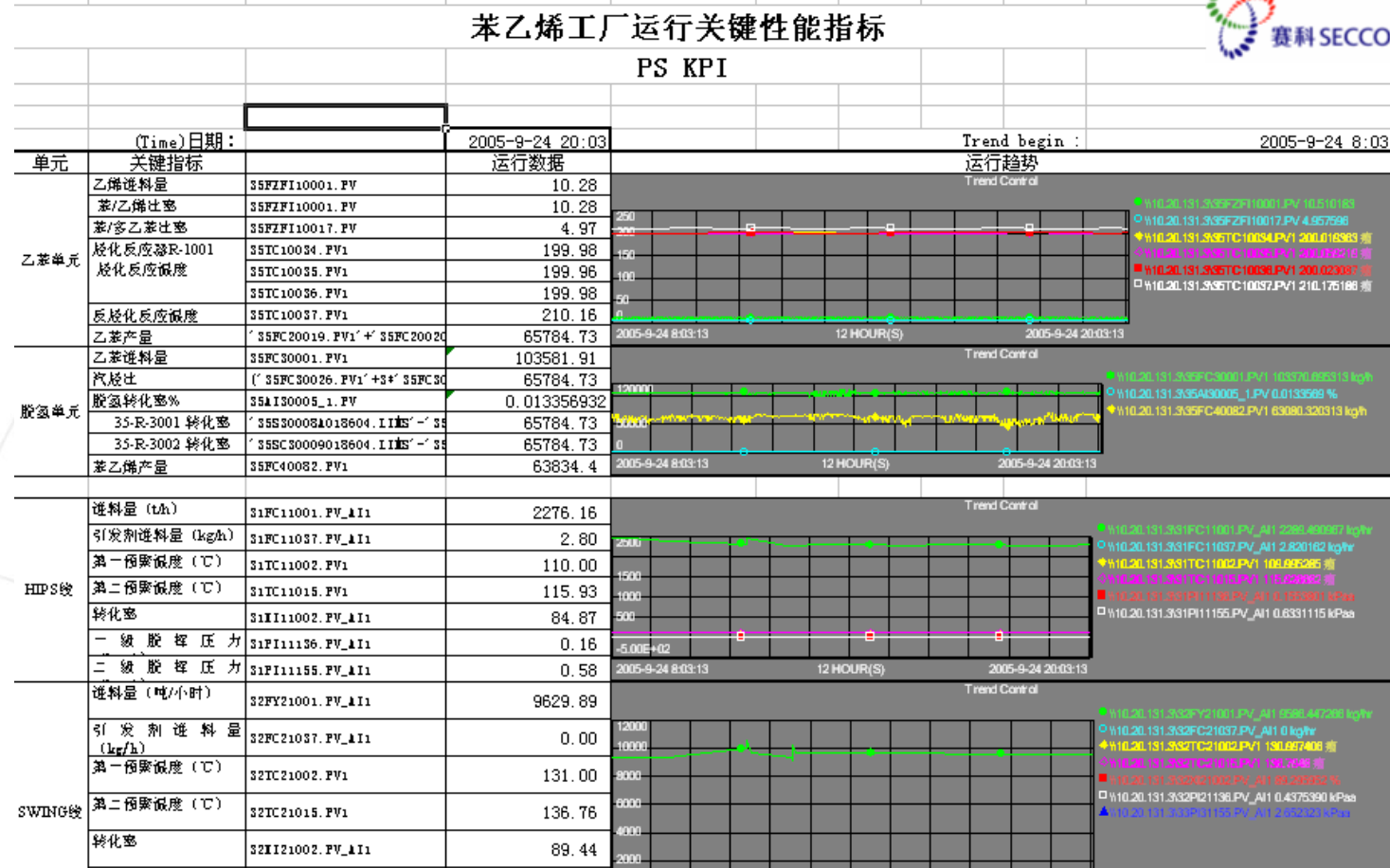
Graphics on ProcessBook

- Near 400 graphics have been developed. Through these graphics, engineers can check or analysis plant operation on ProcessBook same as on DCS



Report and Analysis

- Production report, production log and production analysis are implemented on DataLink



Inventory and Batch Tracking

- Inventory tracking include inventory calculation and tank status tracking. Batch tracking is tracked time, specification and quantity according to information of DCS, PI and LIMS

储罐状态 TANK STATUS

日期Date:	2005-8-29 17:02		
	Refresh		
Tank	Event	Occurring	
75TK0101B	Ethylene 乙烯 从码头进料 From JETTY	Yes	
75TK0101C	Ethylene 乙烯 送料 send out	Yes	
75TK0101D	Ethylene 乙烯 从高压进料 From High Pressure	Yes	

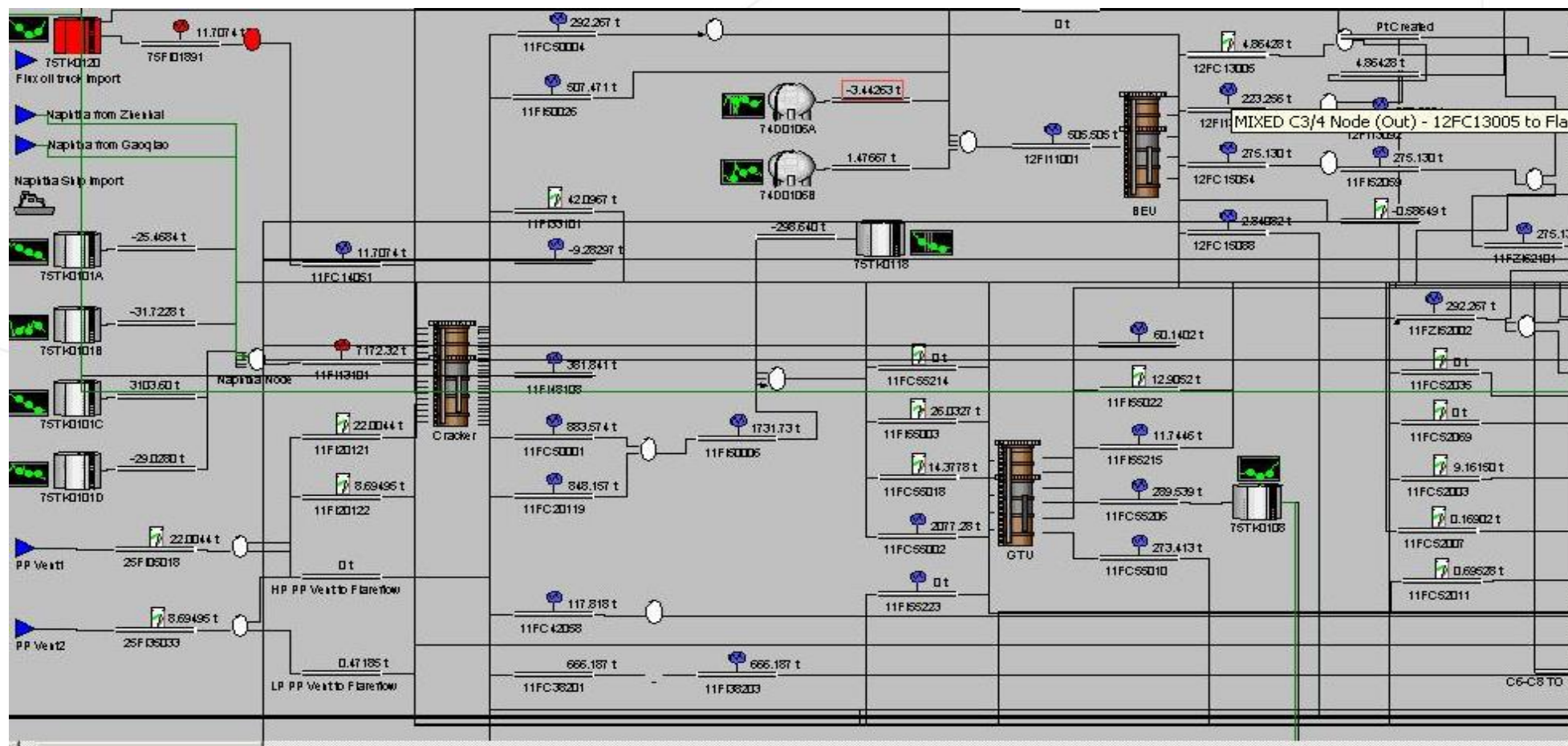
PE2 BATCH TRACKING REPORT

Start	2005-11-1 10:00						
End	2005-11-15 13:31						
22D8800A							
BEGINNING TIME	BATCH ID	TRANSFERRING TIME	WEIGHT IN HOMO SIL	SPECIFICATION	BAGGING SILO	WEIGHT IN BAGGIN	END TIME
2005-11-14 20:25	HD5301AAHAKB0549A	2005-11-15 07:23	300569.84	P	76D201D		
2005-11-14 04:23	HD5301AAHAKB0547A	2005-11-14 15:37	307347.38	P	76D201B	6.2290	2005-11-15 03:14
2005-11-13 13:04	HD5301AAHAKB0545A	2005-11-13 18:27	212109.77	P	76D201D	0.6493	2005-11-14 12:42
2005-11-12 13:34	HD5301AAHAKB0542A	2005-11-13 00:27	301133.06	P	76D201C	6.3985	2005-11-13 18:25
2005-11-11 21:46	HD5301AAHAKB0540A	2005-11-12 09:08	302122.09	P	76D201B	277.7932	2005-11-13 09:02
2005-11-10 22:14	HD5301AAHAKB0537A	2005-11-11 03:51	209867.48	P	76D201A	176.7997	2005-11-11 04:28
2005-11-09 22:43	HD5301AAHAKB0534A	2005-11-10 09:51	300340.19	P	76D201D	1.1578	2005-11-13 06:26
2005-11-09 08:37	HD5301AAHAKB0532A	2005-11-09 12:14	203798.98	P	76D201A	95.0872	2005-11-09 22:53
2005-11-08 07:47	HD5301AAHAKB0529A	2005-11-08 18:14	300457.03	P	76D201B	275.4089	2005-11-12 06:59
2005-11-07 17:20	HD5301AAHAKB0527A	2005-11-08 03:38	300819.34	P	76D201A	216.0886	2005-11-09 09:06
2005-11-06 15:41	HD5301AAHAKB0525A	2005-11-07 02:46	300674.03	P	76D201D	1.1578	2005-11-13 06:26
2005-11-05 15:49	HD5301AAHAKB0522A	2005-11-06 03:17	301021.19	N	76D201A	115.9772	2005-11-06 18:20
2005-11-05 06:49	HD5301AAHAKB0519A	2005-11-06 03:17	301021.19	N	76D201A	115.9772	2005-11-06 18:20

Benefits From Sigmafine

- Monitor and reduce meter maintenance
- Measurement stewardship
- Monitor plant performance
- Identify operations problems
- Loss identification and tracking
- Plan versus reconciled comparison

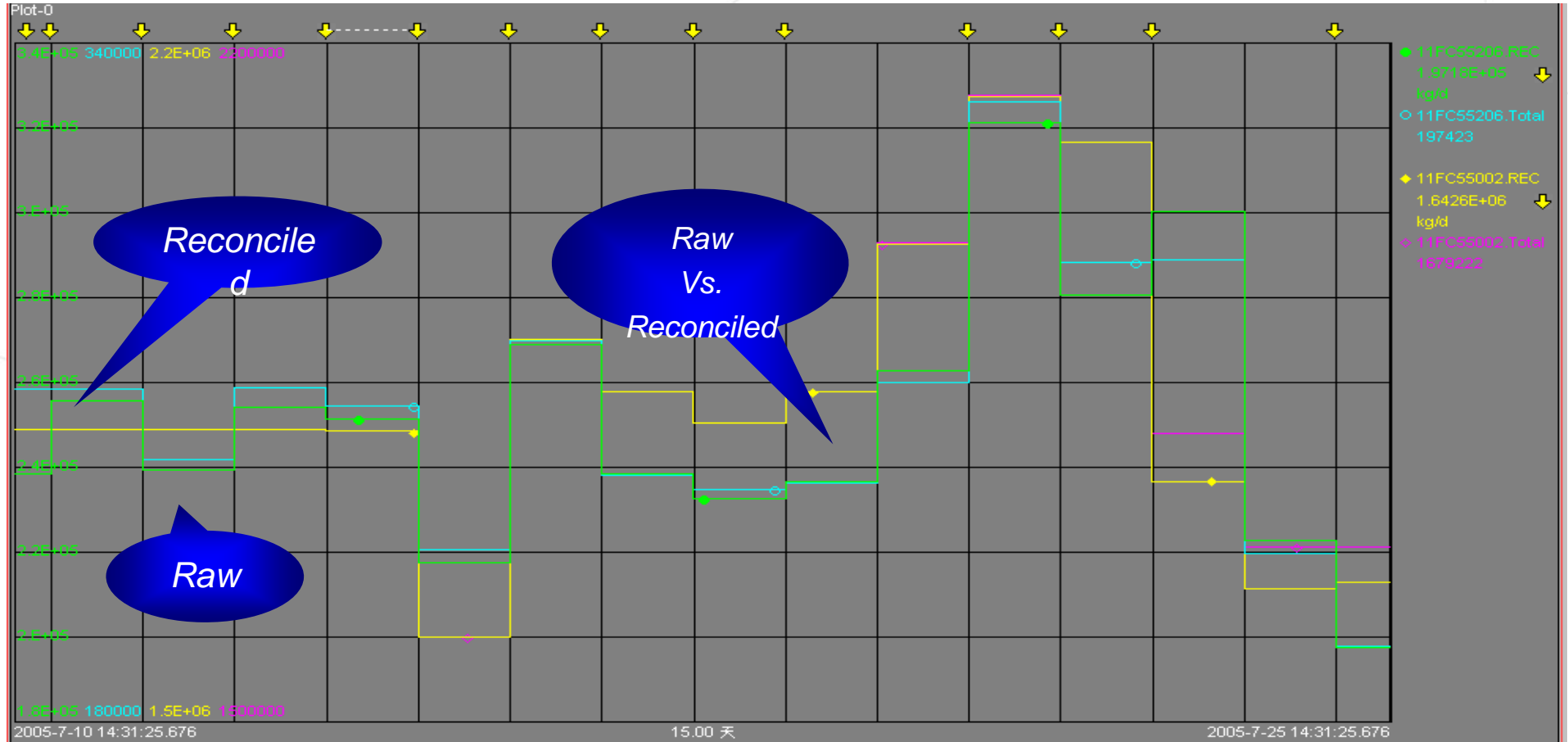
Sigmafine Model



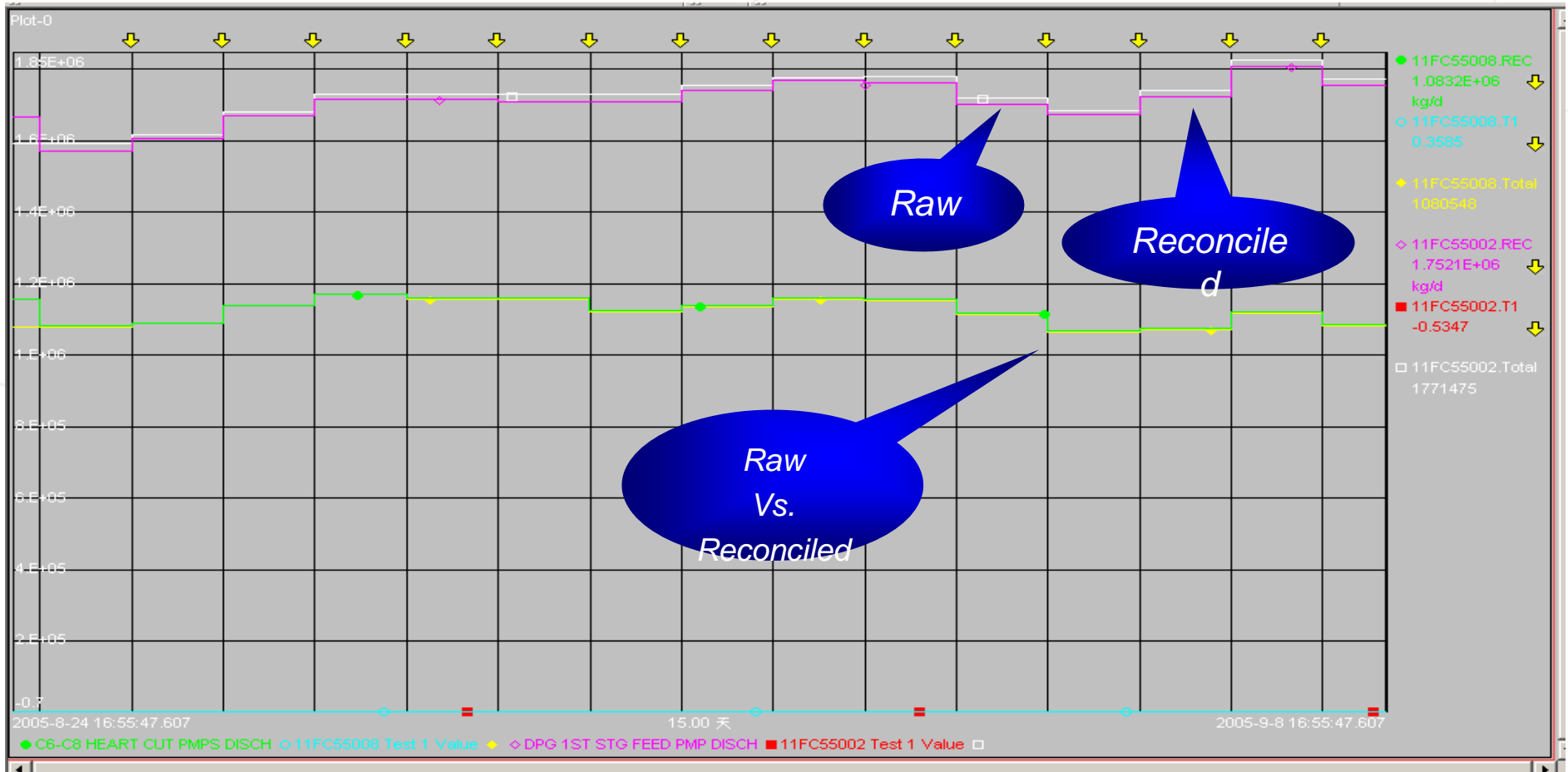
VALUE NOW, VALUE OVER TIME



Raw vs. Reconciled



Raw vs. Reconciled



Example of SF benefit

Through SF daily running, we noticed the Hydrogen mass difference between our supplier and SECCO was increased significantly from Dec.5th, after examining from operation, a safety valve abnormal release was found behind our boundary meter. It prevented material waste, also avoided HSE near miss.

Date	SCIPIG meter	SECCO inside meter		Diff.
	83FI05001A.P V	20FI21001.PV	25FI05003.PV	
2005-12-1 0:00	316	243	52	21
2005-12-2 0:00	288	215	52	20
2005-12-3 0:00	187	109	51	26
2005-12-4 0:00	217	125	49	42
2005-12-5 0:00	349	87	33	229
2005-12-6 0:00	333	84	25	224
2005-12-7 0:00	467	219	27	221
2005-12-8 0:00	432	218	7	207
2005-12-9 0:00	435	230	2	203
2005-12-10 0:00	370	140	20	210
2005-12-11 0:00	511	273	25	213
2005-12-12 0:00	500	253	26	221
2005-12-13 0:00	482	238	23	221
2005-12-14 0:00	354	171	2	181
2005-12-15 0:00	812	609	20	184
2005-12-16 0:00	389	225	25	139
2005-12-17 0:00	165	123	24	19
2005-12-18 0:00	168	128	21	19
2005-12-19 0:00	151	123	13	15

VALUE NOW, VALUE OVER TIME

Next Step...

- **Integrate of Machinery/Condition Monitoring System**
- **Enhanced SAP Interface**
- **Process Templates/Profile Management ,**
- **Integration of Engineering Documentation**
- **Advanced KPI tracking and reporting**
- **Batch genealogy**



SECCO SCENE



赛科部分装置晨景
Morning Scapes of some SECCO units

SECCO SCENE



赛科夜景图
SECCO Nocturne



**OSISOFT USER
CONFERENCES
2006**