



# Find What You've Been Looking For:

## How AF 2.0 Helps You Organize Your Information

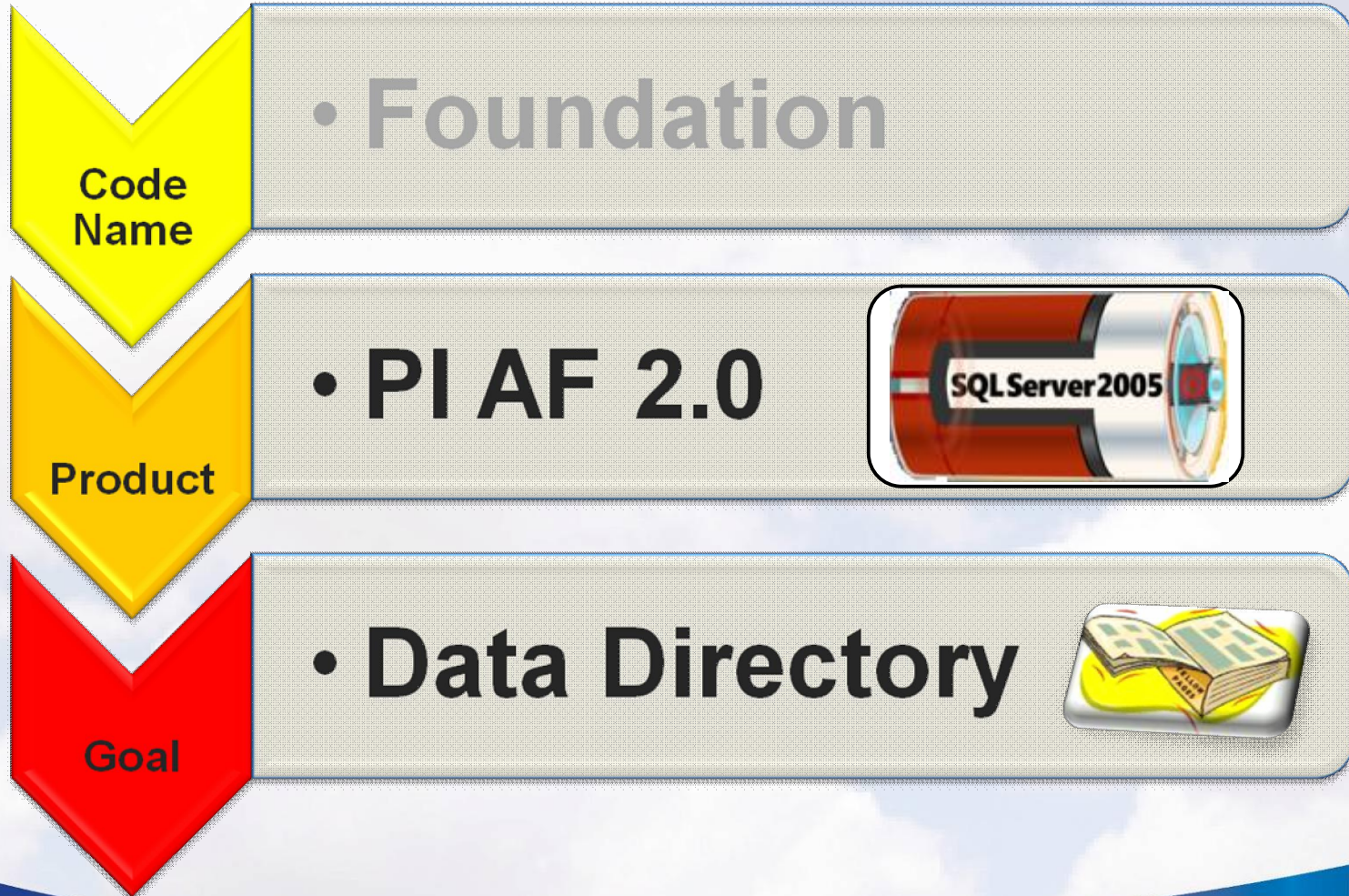
Ray Hall  
Development Manager  
OSIsoft

Laurent Garrigues  
Product Manager  
OSIsoft

# Agenda

- What's AF 2.0?
- The value of AF
- Demonstrations
- Backwards compatibility
- What's coming next

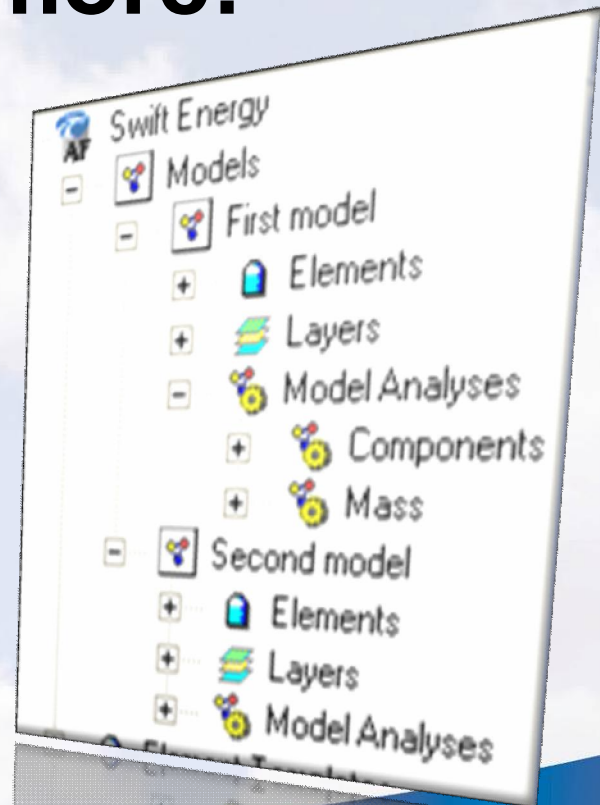
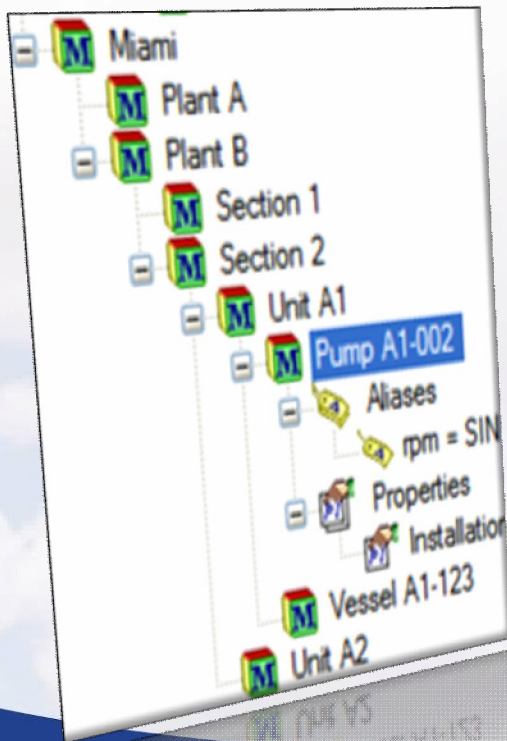
# Foundation by any other name





# What is AF 2.0?

The best of PI MDB and PI AF 1.x combined  
**... and a lot more!**





# Agenda

- What's AF 2.0?
- **The value of AF**
- Demonstrations
- Backwards compatibility
- What's coming next

# The value of AF: structure

- PI is extremely good at:
  - History of data collected data from almost anywhere
  - Massive scalability, Highly available
  - Ease of use & Rapid deployment
- PI is focused on a points database
- Meta-data: a **structure** for the data
  - PI supplies data
  - AF supplies structure and access to more data

# Why add structure?

- Structure is ***your*** knowledge applied to ***your*** points
- Structure helps you:
  - Store your domain expertise
  - Build applications
  - Build displays
  - Answer new questions



# AF shapes your data

AF is designed to store structure:

- Defining types of assets → Templates
- Associating points with assets → Elements
- Extra information about points → Attributes
- Physical/logical asset structure → Hierarchy
- Assets connectivity → Models
- Transactions → Transfers

# Agenda

- What's AF 2.0?
- **The value of AF**
  - **Storing domain knowledge**
  - Building applications
  - Creating displays
  - Answering new questions
- Backwards compatibility
- What's coming next

# Domain knowledge - performance

## Model different types of equipment

- Heat exchangers
- Reduction furnaces
- Power Meters
- Trucks
- Buildings
- Wells
- IT devices
- Tanks





# Domain knowledge - calculations

## Apply engineering/business rules

- Heat, mass transfer
- Chemical principals
- Electrical calculations
- Material movements
- Energy consumption
- Production and forecast
- Load, availability
- Inventories



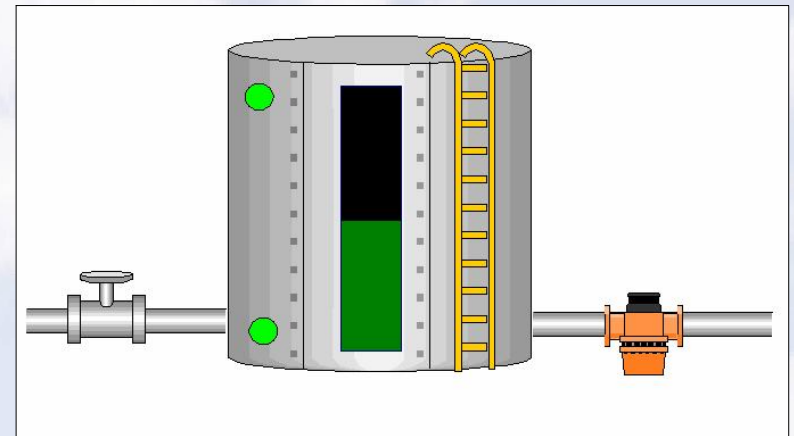
# Domain knowledge - limits

## Assets performance

- Determine if the equipment is operating effectively
  - Heat exchanger fouling
  - Efficiency
  - Power factor
  - Demand/Supply
- Detect and act on abnormal conditions with PI Notifications
  - Alarming rules

# Domain knowledge – Tank R21

- How to totalize flow rates in/out of Tank R21
- Limits for notification on Tank R21
- Alarm states on Tank R21
- Strapping table
- Capacity of Tank R21
- Production line for Tank R21
- Downstream units of Tank R21
- Responsible person for production line





# Domain knowledge – wind turbine

- Power generation
- Weather data
- Owners
- Maintenance data
- Connectivity to the grid
- Availability
- Power curve



# Agenda

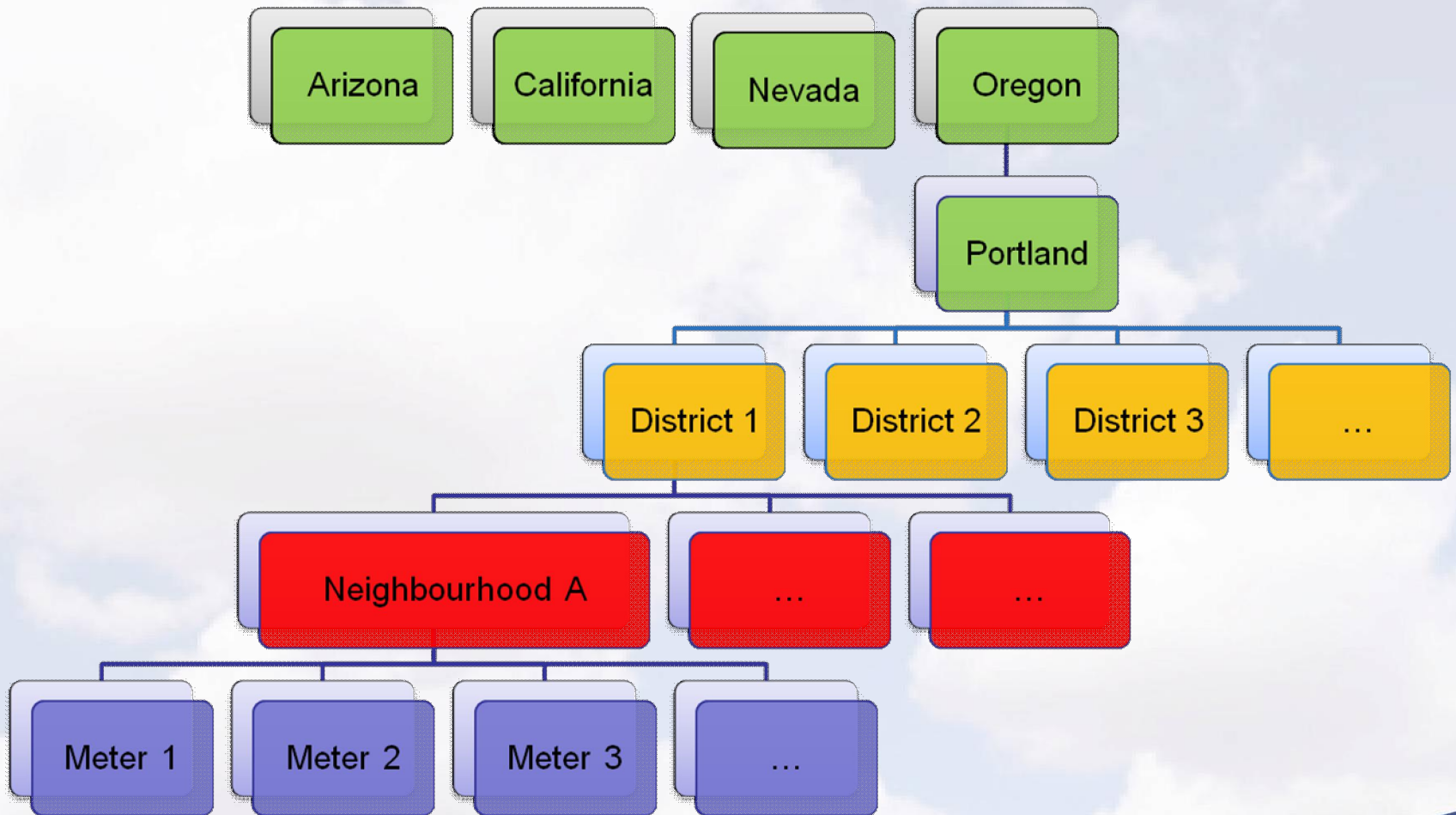
- What's AF 2.0?
- **The value of AF**
  - Storing domain knowledge
  - **Building applications**
  - Creating displays
  - Answering new questions
- Backwards compatibility
- What's coming next

# AMI\* scenario

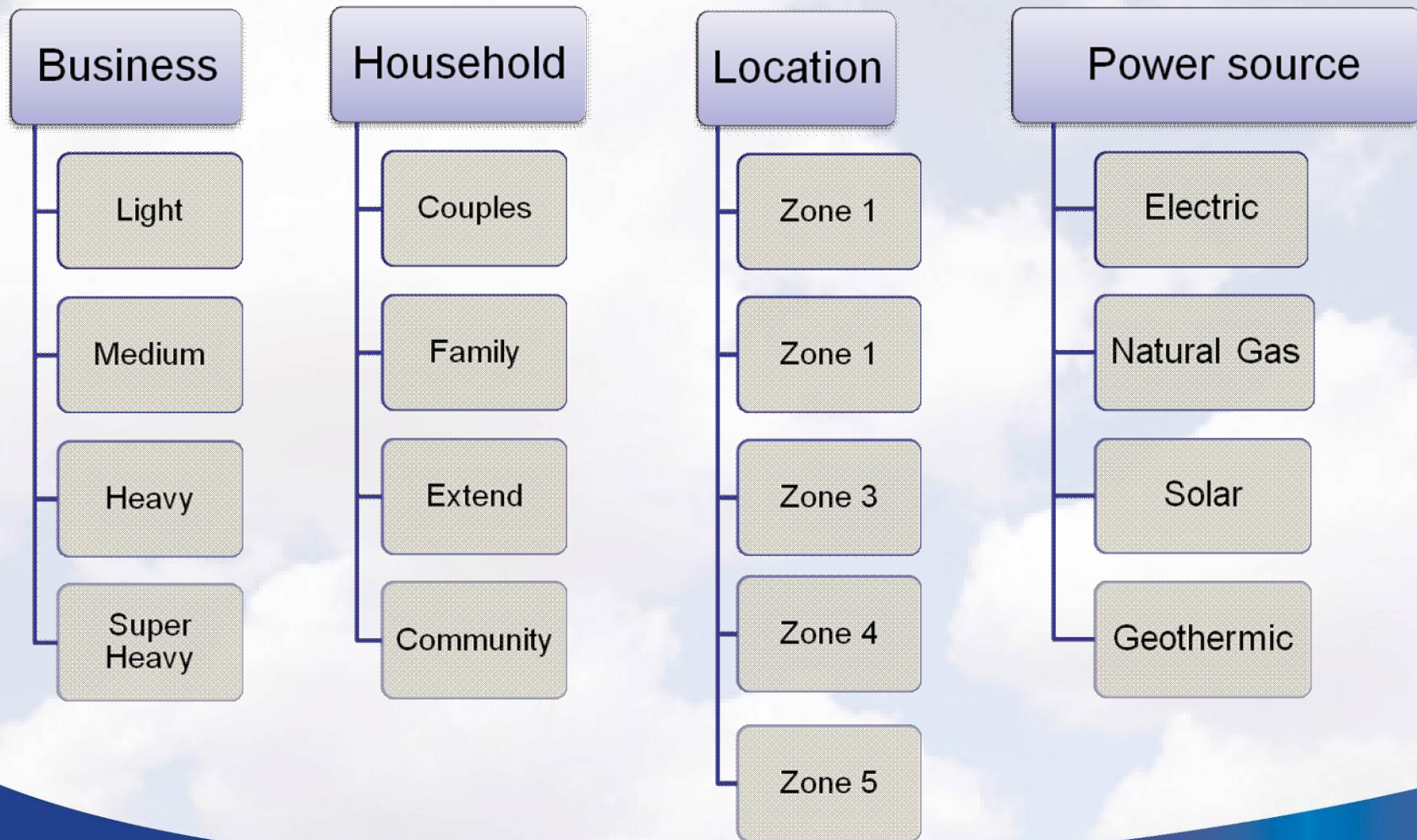
- Power meters being managed by an enterprise PI system
    - A single AF Server to organize the meters
    - Real-time data provided by several PI Servers
  - Meters are derived from templates
    - PI data
    - Data from foreign systems
    - Forces consistency
    - Allows automatic tag generation
- Static data  
Calculations



# Hierarchical view



# Meters categories



# Element Templates

# Applications – from OSI

- PI Notifications
  - Store Analysis and Notifications
  - Contacts
  - Use Element Attributes
- Assets connectors
- Event frames
- Configuration database



# Agenda

- What's AF 2.0?
- **The value of AF**
  - Storing domain knowledge
  - Building applications
  - **Creating displays**
  - Answering new questions
- Backwards compatibility
- What's coming next

# AF speeds up visualization

- Many displays are centered on equipment
  - Unit detail, Line diagram
  - Process Overview
  - Area displays
- Knowledge of the equipment helps
  - Finding relevant points
  - Creating unit relativity
  - Custom object symbols

Get connected  
from ProcessBook

# Agenda

- What's AF 2.0?
- **The value of AF**
  - Storing domain knowledge
  - Building applications
  - Creating displays
  - **Answering new questions**
- Backwards compatibility
- What's coming next

# Answer new questions

- Adding your structure is done once
  - Organize points from multiple PI systems
  - Adding consistent naming
  - Adding static configured data
  - Adding data from other systems
- This structure benefits all PI users forever
  - Searches across PI systems
  - Search for information related to the business
  - Ability to view and use additional information



# AMI scenario – scalability test

4 states-cities

40 districts

25 neighbourhoods

300 power meters

1.2 million  
assets

# Summary of new AF 2.0 features

- Improved element hierarchy
- Improved searching capabilities
- Object history (versioning, query dates)
- Hierarchical attributes
- New attributes types
- Enumeration sets
- Object level security integrated with Windows

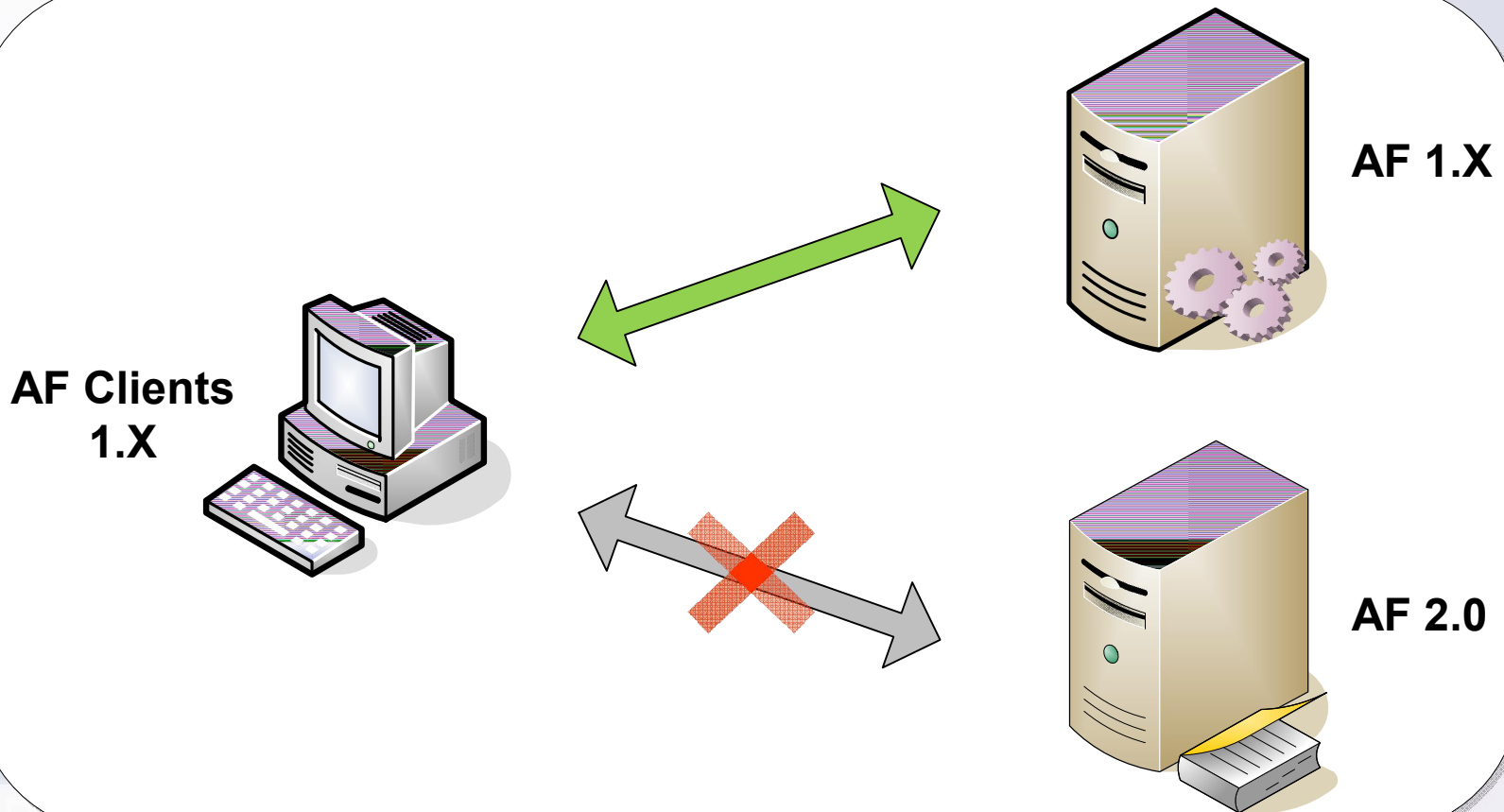
# Agenda

- What's AF 2.0?
- The value of AF
- Demonstrations
- **Backwards compatibility**
- What's coming next

# The AF compatibility layer

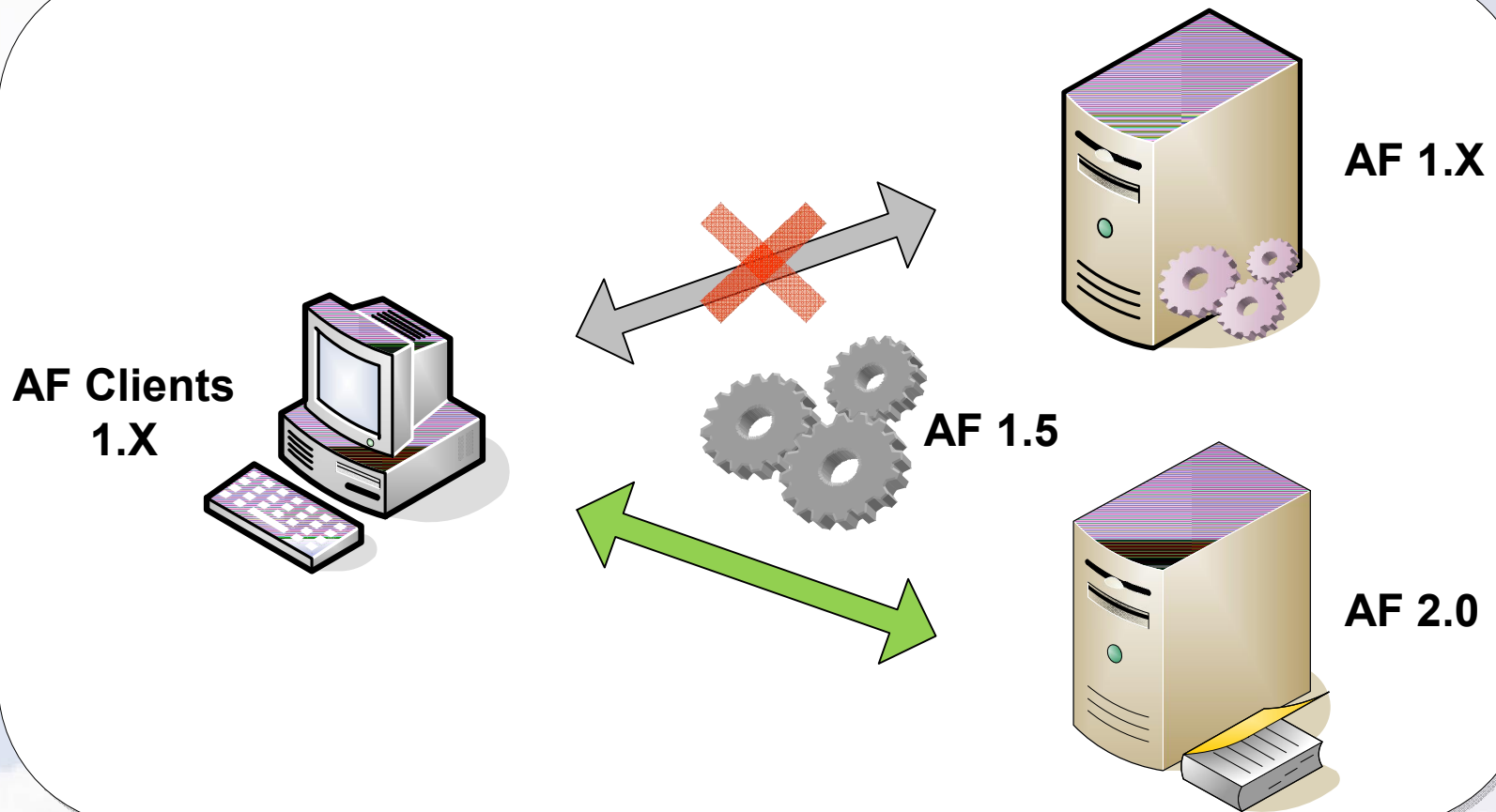
- Redirect all AF 1.x clients towards AF 2.0
  - AF Explorer
  - AF Modeler for ProcessBook
  - AF Excel Add-ins
  - Custom DR, AR
- New AF 2.0 features not supported by old clients

# No compatibility layer



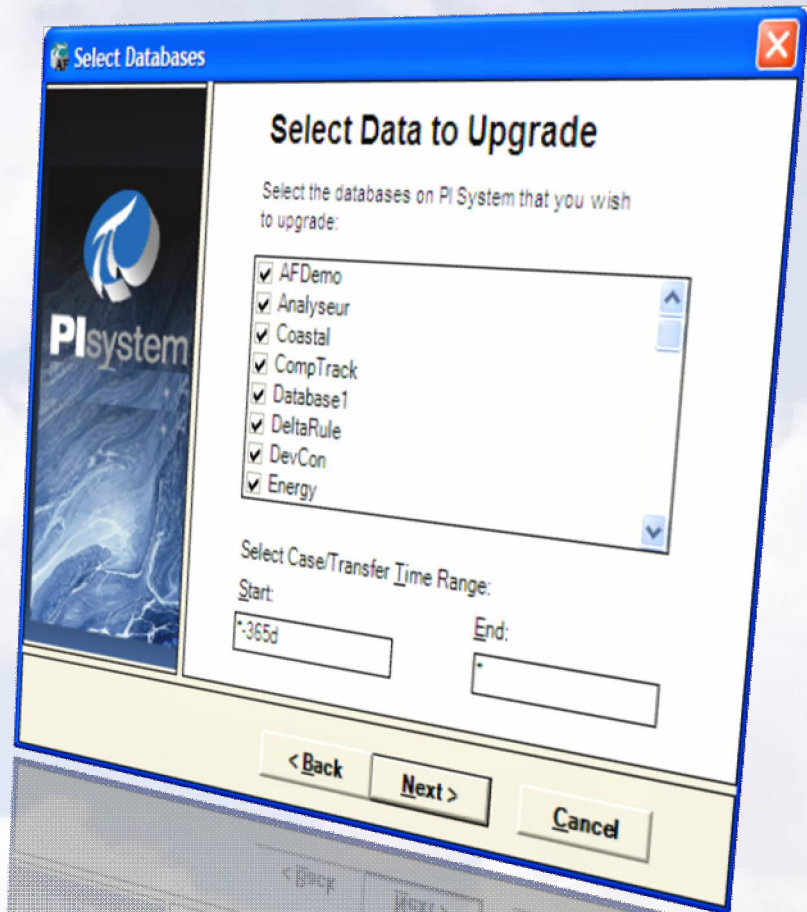


# With the AF 1.5 compatibility layer



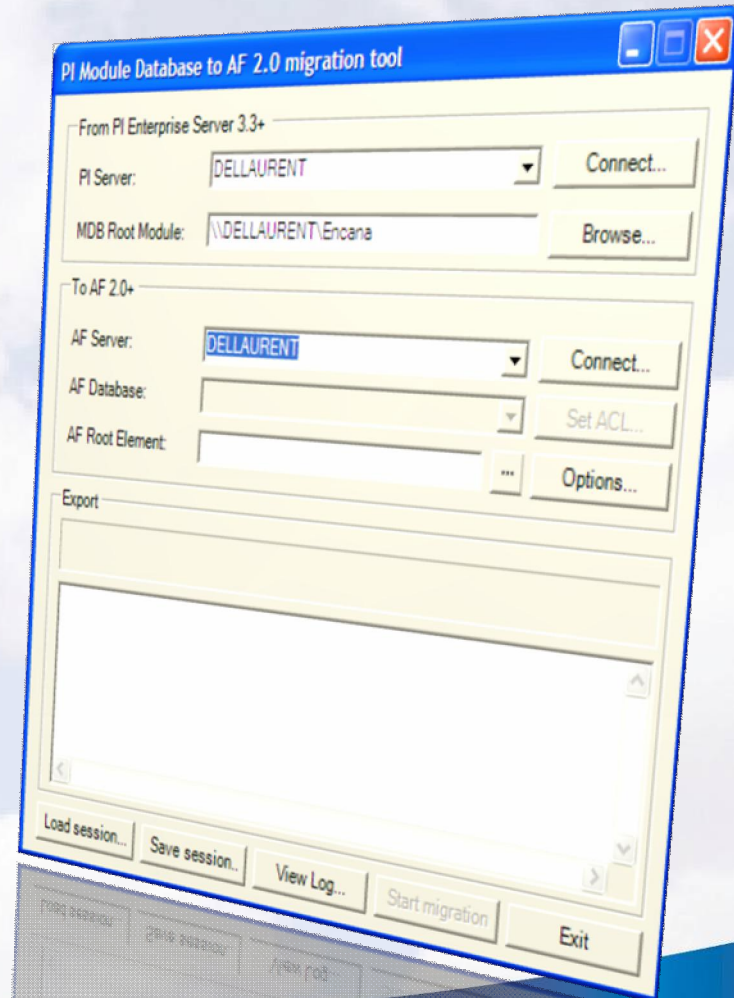
# AF upgrade utility

From AF 1.x  
To AF 2.0



# Migration from PI MDB

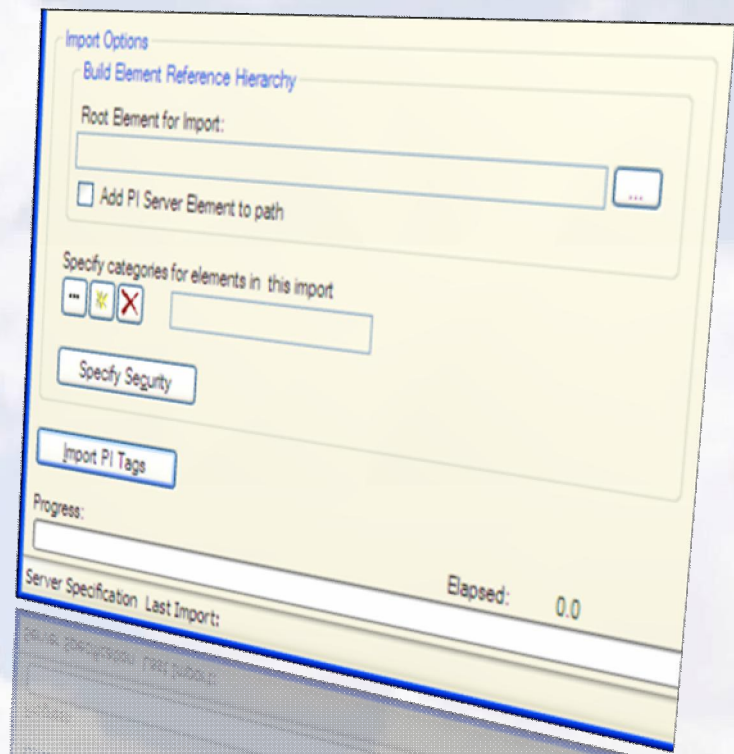
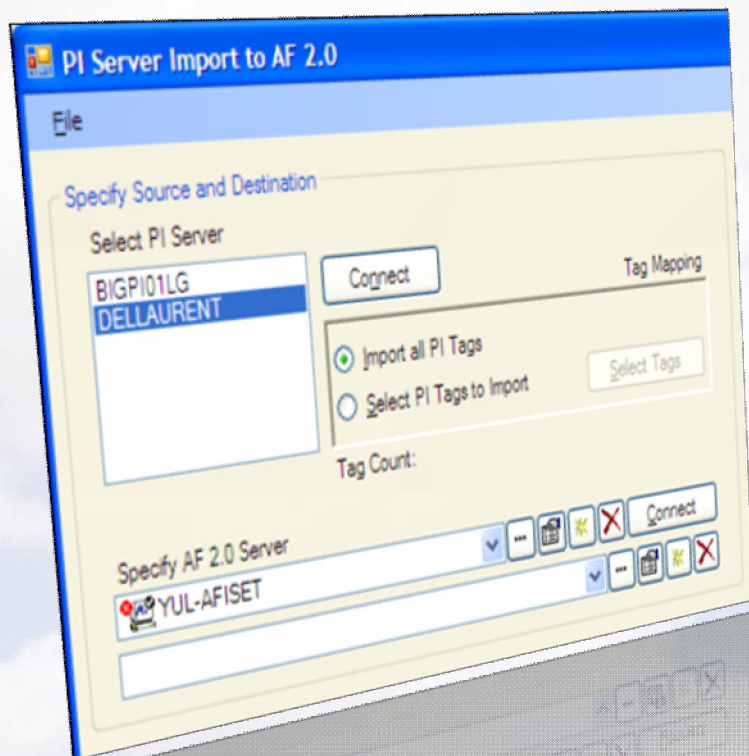
From PI MDB  
To AF 2.0





# Getting started with AF 2.0

## The PIServerImport utility



# Agenda

- What's AF 2.0?
- The value of AF
- Demonstrations
- Backwards compatibility
- **What's coming next**



# What's coming next?

- **Visualization**
  - Element Relative Displays/Reports
  - Integration with RtWebParts
- Advanced searches
- AF Views for role based access
- AF OLEDB Provider
- AF Modeler upgrade to AF SDK 2.0
- Integrate AF add-ins for Excel

# Your next move...

- **Come see us at the demo booth!**
- **Customers/Partners related talks:**
  - **Tues. 13:55** CIM Models, AF 2.0 and Automatic Substation One-Line Generation
  - **Tues. 16:50** Ekho: A suite of MES application that leverage AF 2.0.
  - **Wed. 13:30** Leverage Your PI System with AF 2.0 to Implement and Manage Your Operational KPIs
  - **Thur. 09:55** 3D Navigation: Adding a New Dimension to PI and AF Data

# VOYAGE2007



***Thank  
You***

**OSI**soft®

Copyright © 2007 OSIsoft, Inc. All rights reserved.

VALUE NOW, VALUE OVER TIME