



## Event Frames Give Your Real-Time Data Context: A Preview of What's to Come

**Chris Coen**  
Event Frame Product Manager  
OSIsoft, Inc.

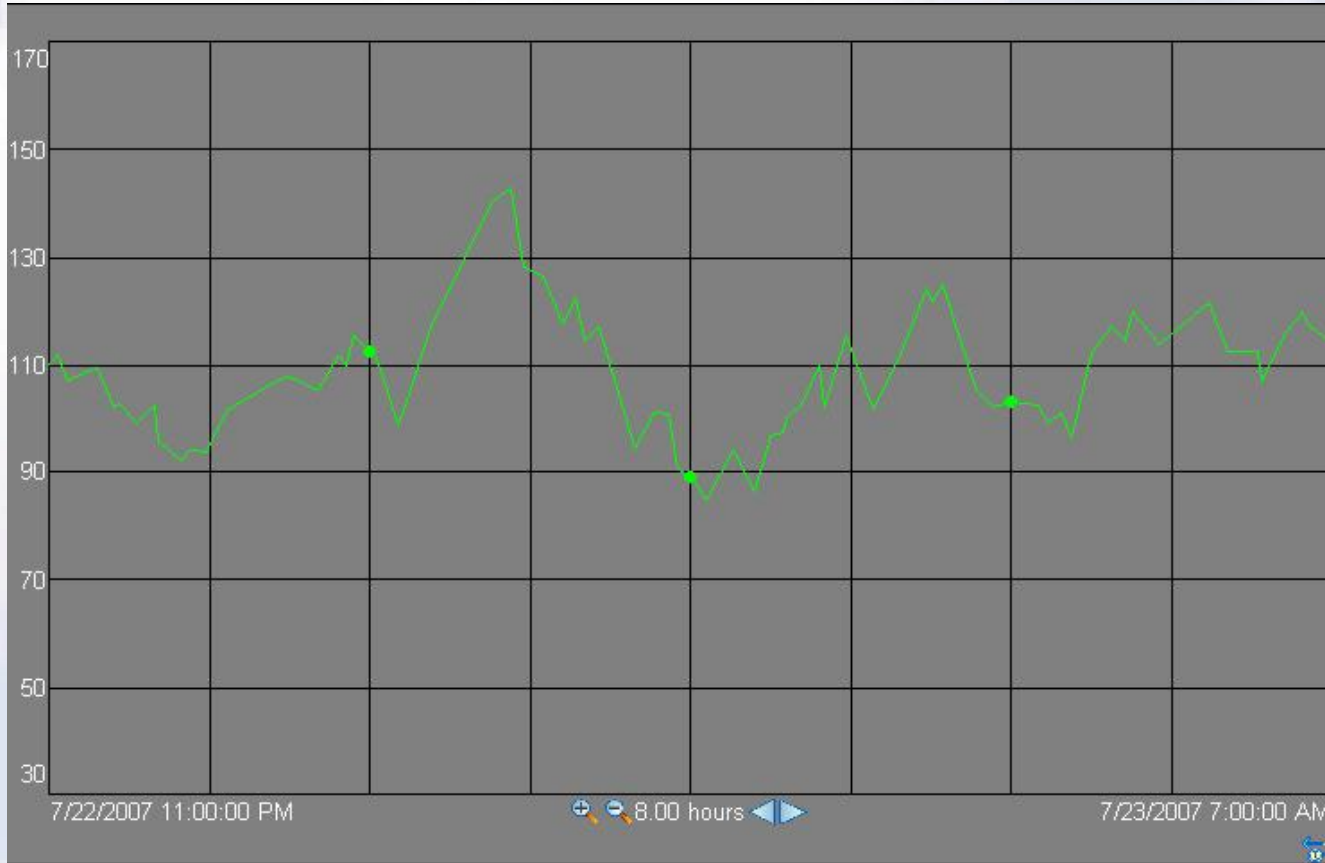
**Ken Coates**  
Senior Software Engineer  
OSIsoft, Inc.



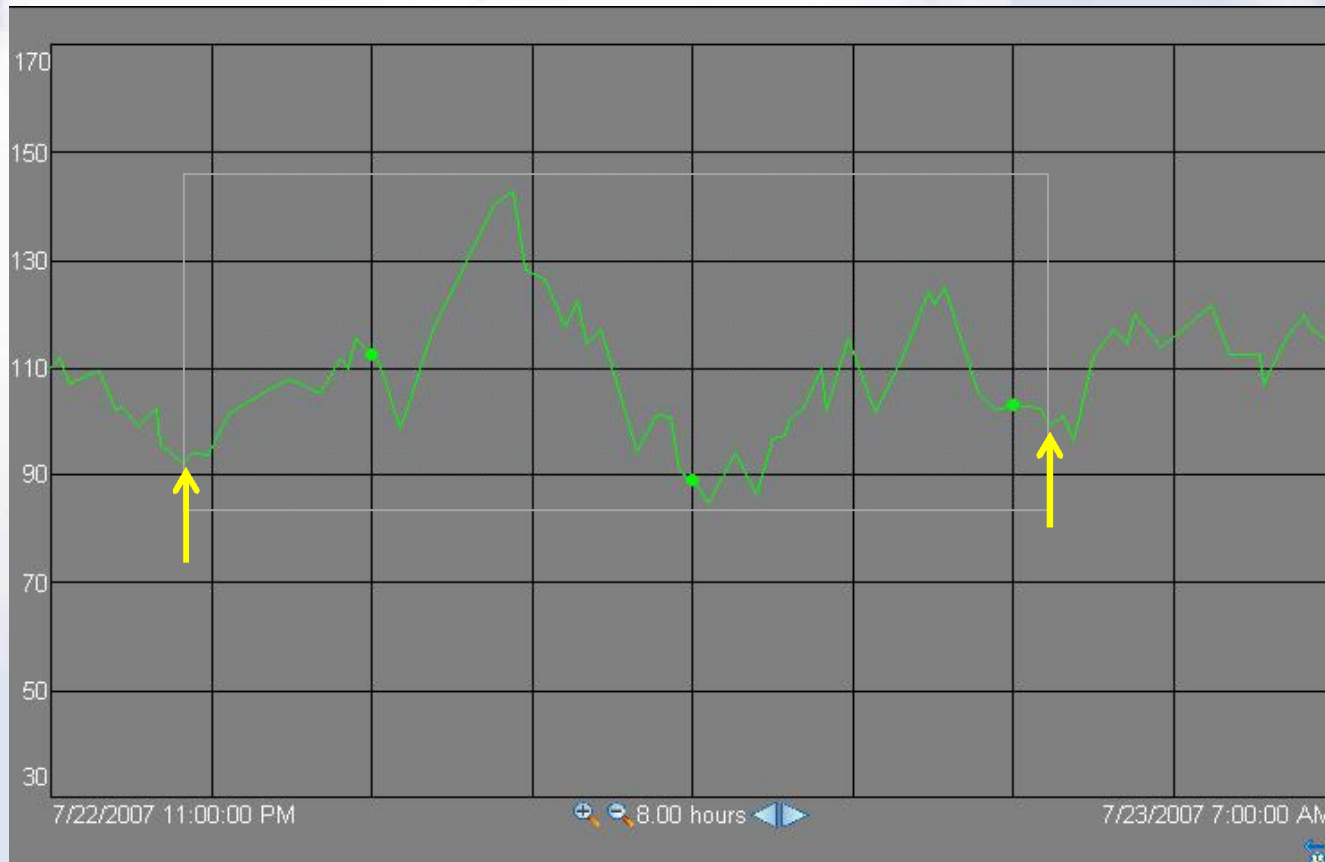
# Event Frame Topics

- What is an Event Frame
- Why now
- Use Cases
- Use Case Sponsorship
- Where are we now
- Batch Feature Backward Compatibility
- Event Frame Focus Group

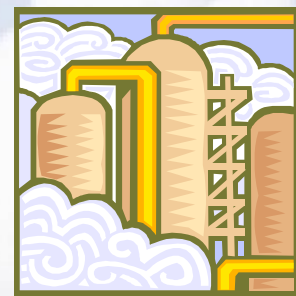
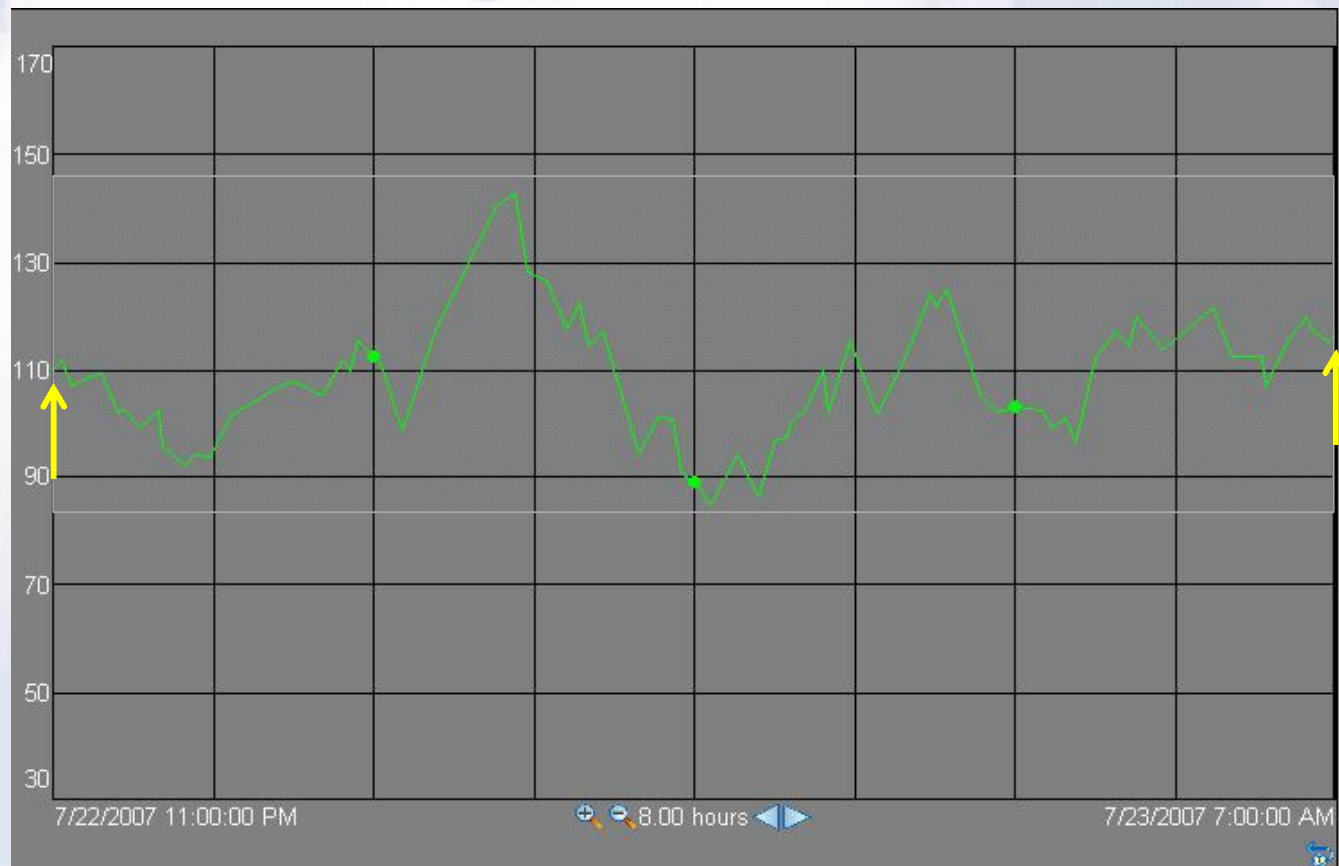
# Continuous Data



# Batch

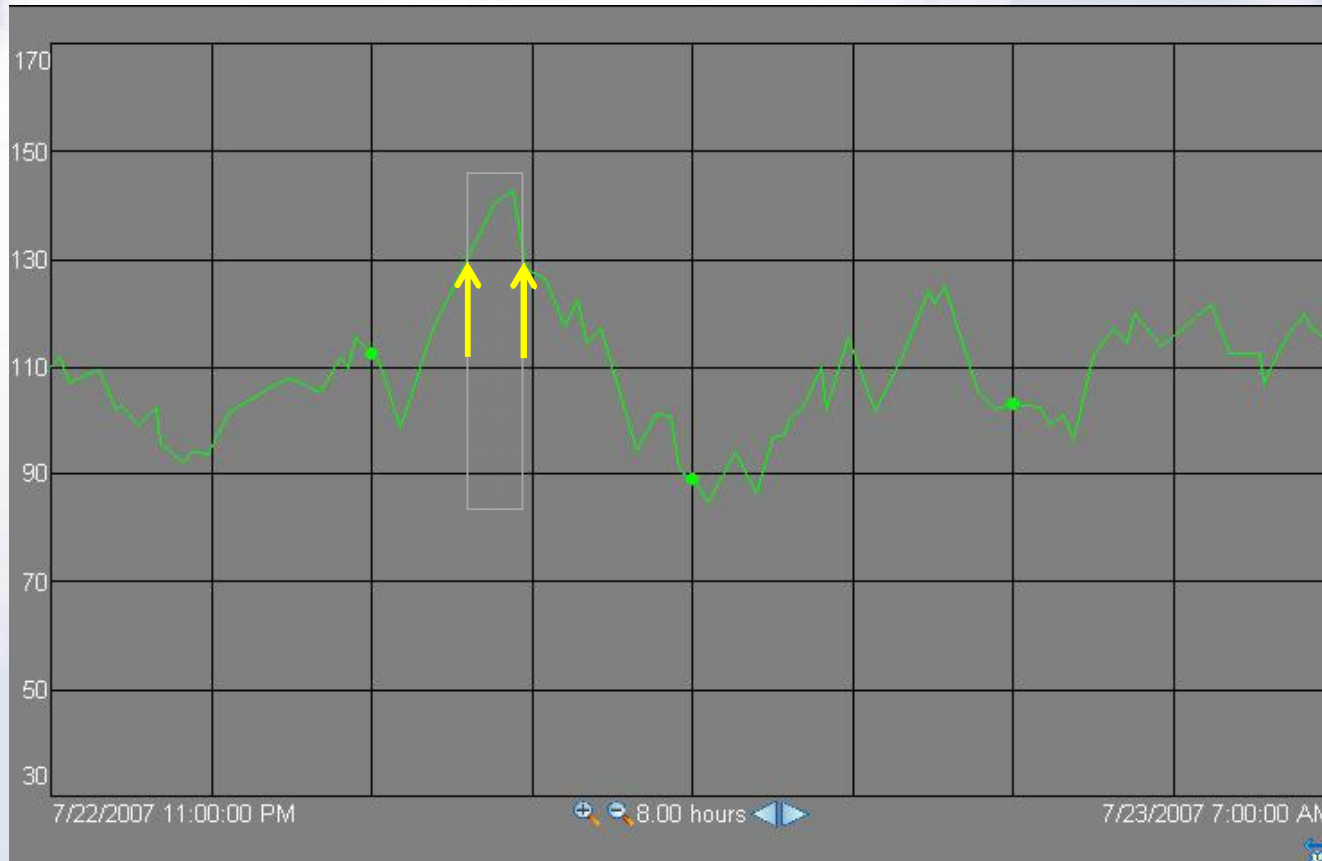


# Day or Shift

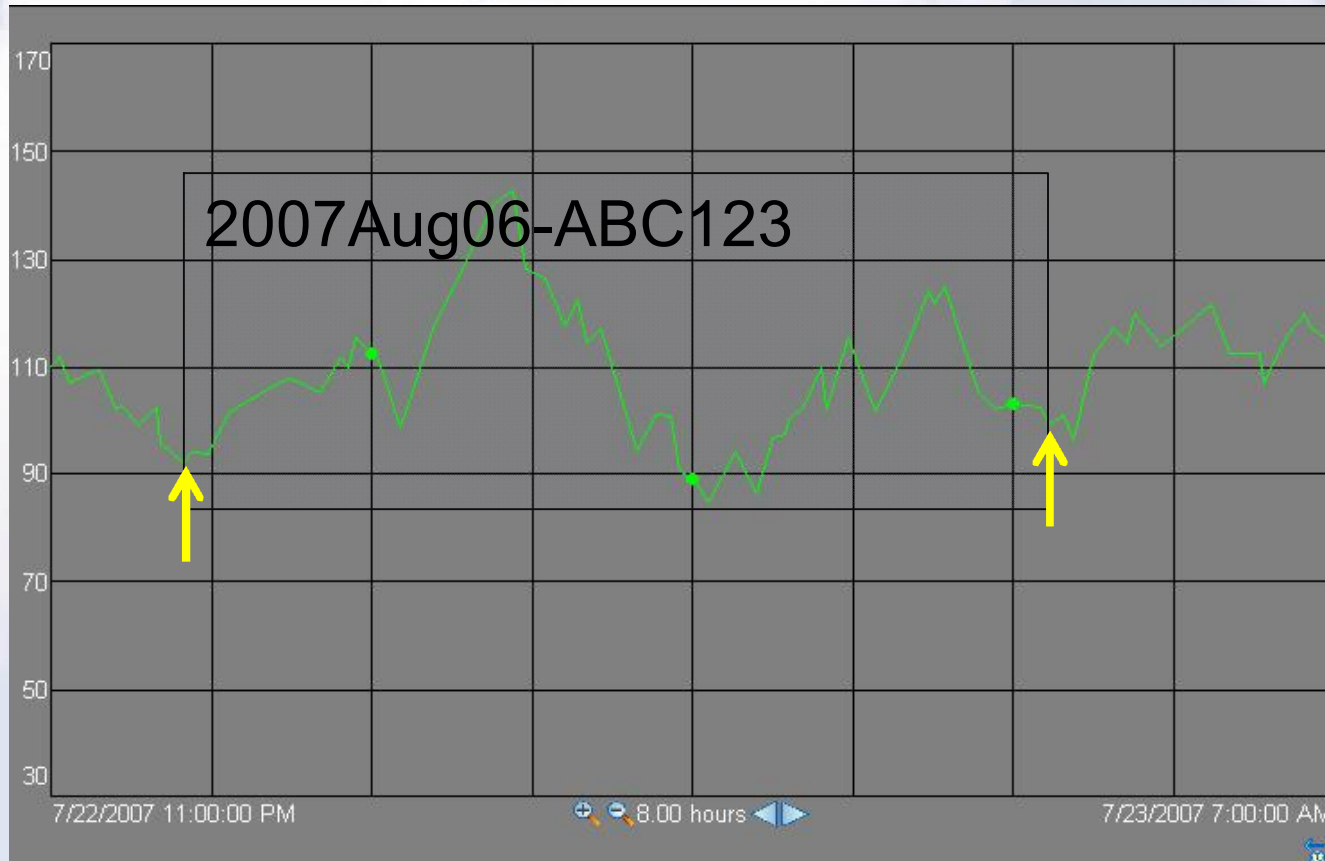




# Event



# What is an Event Frame?



- Start time
- End time
- Name
- Associated data
  - Equipment
  - Tags
  - Comments
  - Event Frames

# Tell us about yourselves

- How many out there are using PI Batch software now?
- How many are using it for a traditional batch application?
- How many are using it for a non-traditional batch application?



# Why now – Internal Drivers

- Extend Batch Features into AF 2.0
  - Batch infrastructure integrated with the AF Database
  - Great opportunity to evolve our existing feature set
- Product features require event frame storage
  - PI Notifications
  - RtReports Report Properties

# Why now – External Drivers

- Large Federated PI Systems
- External Systems are generating Event Frames
- Context driven visualization
- Customer and partner feedback

# Batch Customer Advantages

- Extensible schema
  - S88 supported
  - Other schemas relax restrictions of Batch Database
    - Multiple active UnitBatches on a Unit
- Increase database performance
- Tighter integration with all products

# All Customer Advantages

- Model more types of processes and meet data storage demands
- Customer defined vocabulary
- Segregate Event Frame types
- Historize Event Frames from external systems
- Client side Event Frames
  - Create locally
  - Commit Event Frame or the rule to server

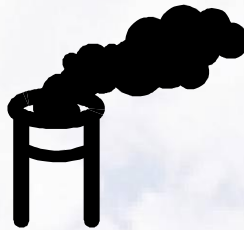
# EF Business Use Cases

- Downtime\Incident\Accident\Excursion
- Discrete Manufacturing
- Transfer Records
- Semi-continuous processes
- Equipment Startup and Shutdowns
- Preconfigured Time Ranges
- Batch

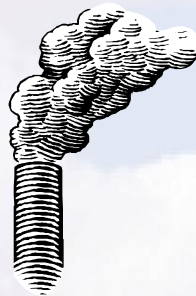


# Excursion Example

1. Create an Element Template representing an emissions stack



2. Create instances of each stack within the Enterprise Asset hierarchy

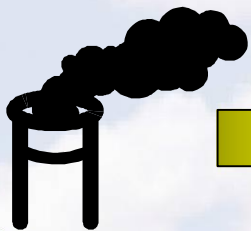


# Excursion Example

3. Create an Analysis Rule
- $$\text{delta} = \text{allowed} - \text{emitted}$$

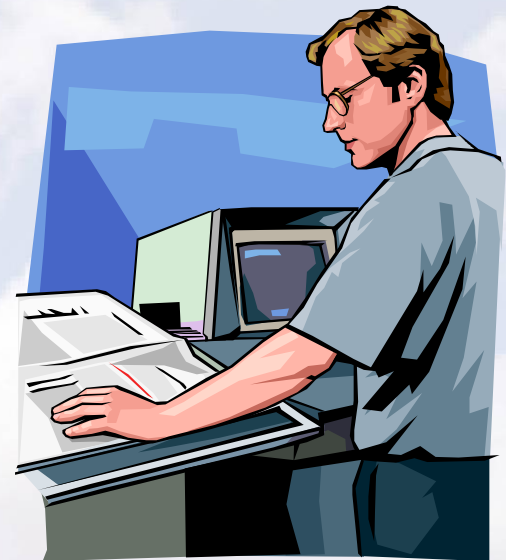


4. Create an Analysis
- Analysis Rule just created
  - Element Template just created
  - Time rule (natural – runs based on values of data)



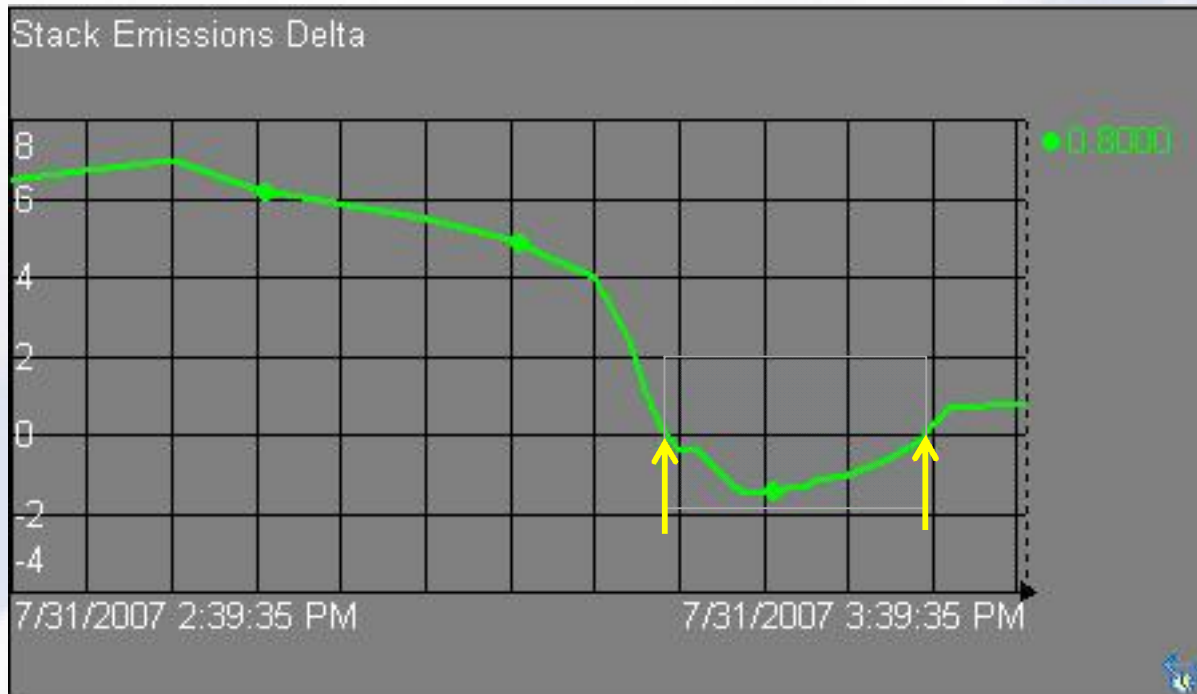
# Excursion Example

5. Configure a Notification when  $\Delta < 0$ , send a Notification to Supervisor



# Excursion Example

## 6. Configure an Event Frame

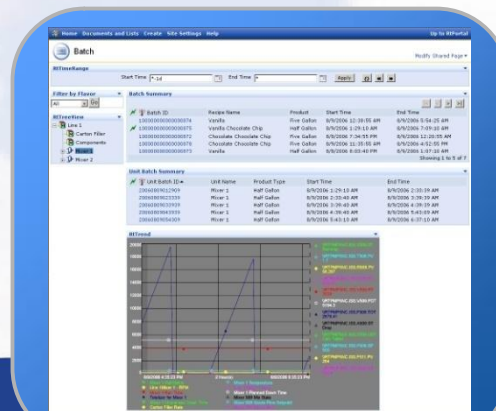


# Excursion Example

- Supervisor receives e-mail notification and clicks link which displays an RtWebPart page with particular stack and time



- Supervisor searches and selects the last 5 times that the stack violated its threshold. All parts show all 5 Event Frames.



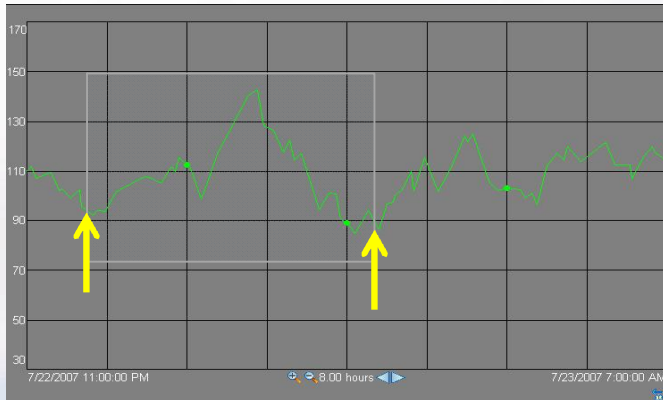


# Downtime\Incident\Accident\Excursion

- Tight integration with PI Analytics
- Tight integration with all visualization products
- More analytical techniques in visualization products
- Easy to configure and use

# Startup Example

1. Start time is hand picked
2. End time is hand picked



3. Choose equipment context
4. Commit to server

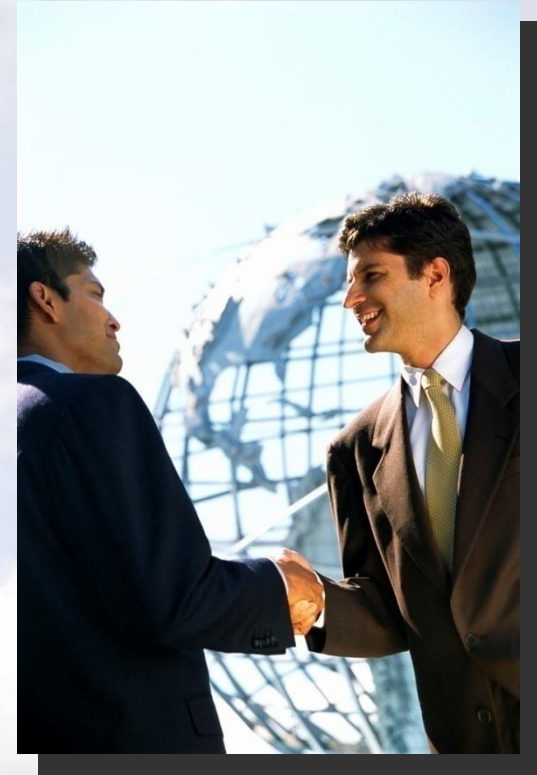


# Discrete Manufacturing

- Searching by product/serial number
- Flexible object schema
- Flexible naming
- Higher metrics for data storage and search performance
- Tight integration with visualization products

# Business Use Case Sponsorship

- Define general requirements for event frames
- Break down the use cases into application-level use cases
- Beta program

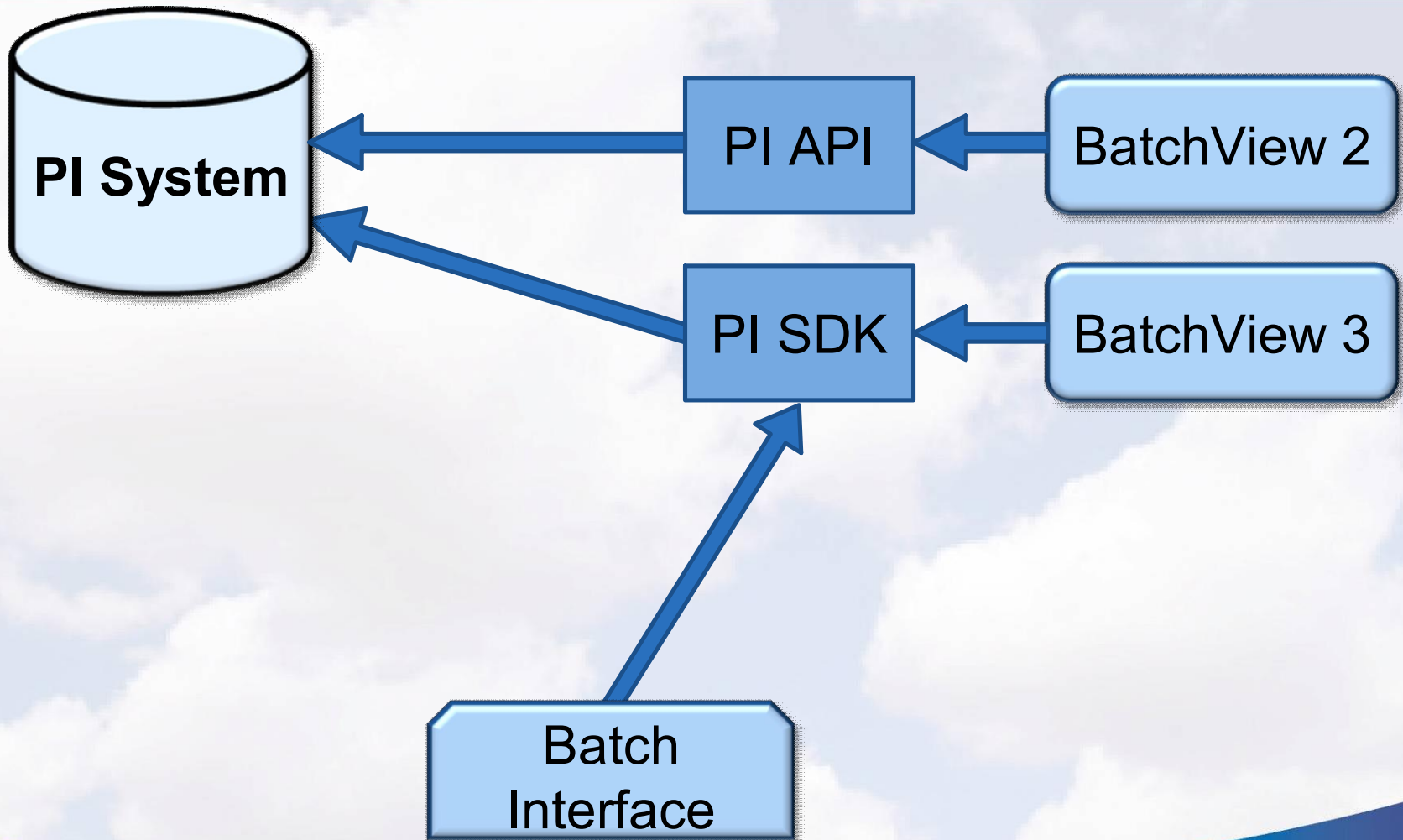


# Where are we?

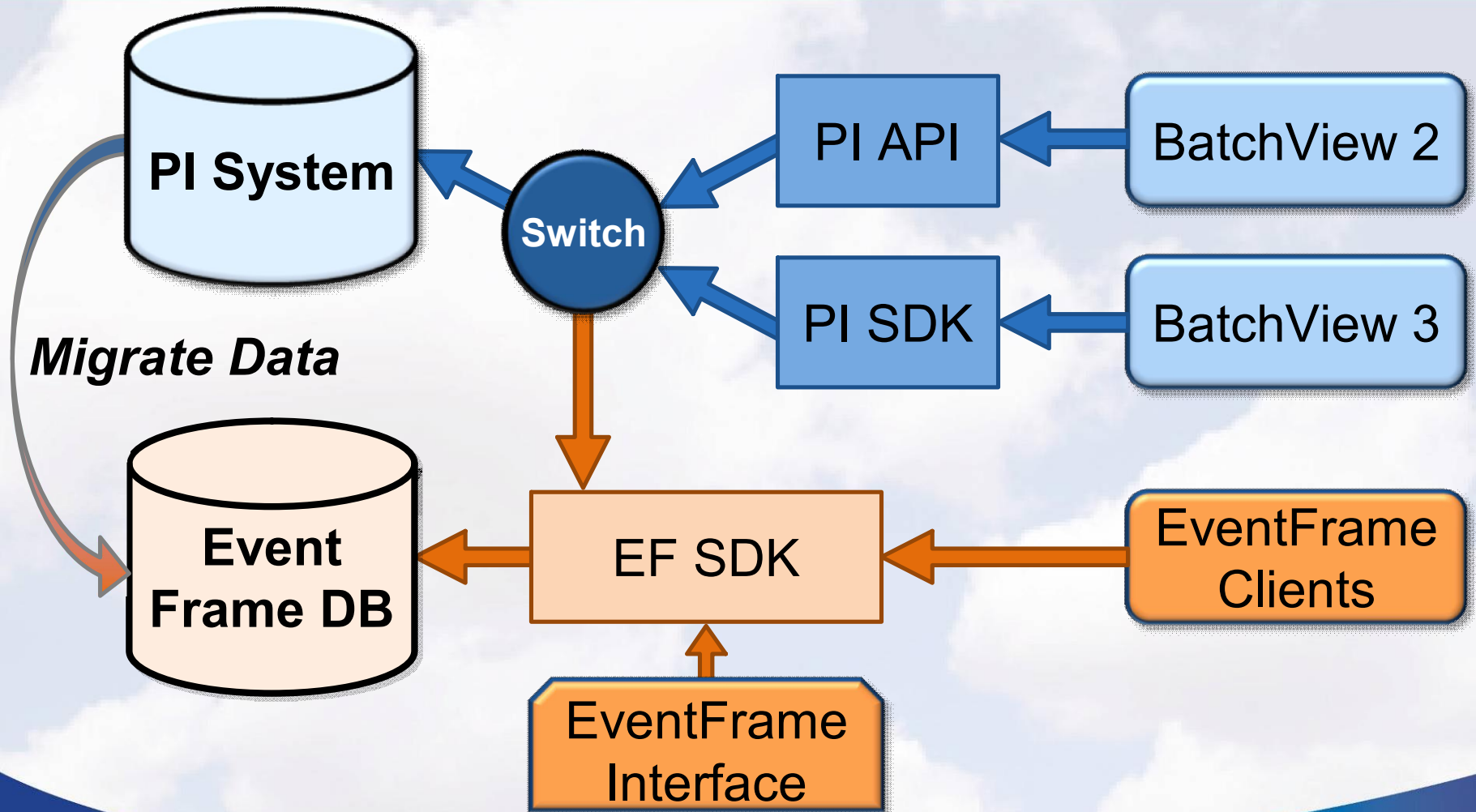
- Collecting and analyzing Use Cases
- Designing Event Frame Objects
  - Integration with Analysis Framework Concepts
    - Templates
    - Attributes
- Prototyping Event Frame Database



# Compatibility – Current Situation



# Compatibility – Migration Model



# Event Frame Focus Group

- Thursday 3-5pm in <Location TBD Marriott 2<sup>nd</sup> floor>
- Signup at Registration Desk <Location>
- Agenda
  - Batch feature backward compatibility
  - New use cases for event frames and sponsorship opportunity

# VOYAGE2007



***Thank  
You***

**OSI**soft®

Copyright © 2007 OSIsoft, Inc. All rights reserved.

VALUE NOW, VALUE OVER TIME