



OSIsoft®
USER CONFERENCE
2008
AMSTERDAM



Empowering Business in **Real Time.**

PI Infrastructure for the Enterprise.

Water Industry Introduction

Gary Wong P.Eng., MBA, CMA
Global Water Industry Executive
gwong@osisoft.com

Water: The Essence of Life

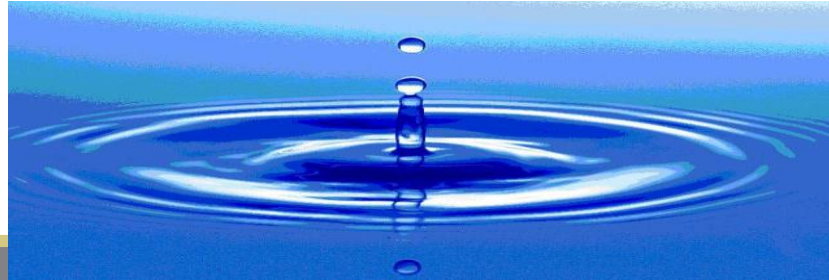
Utilities' continuous and real-time challenges:

**Managing
Costs**

Product Quality

**Service
Delivery**

“Sustainability”



OSIsoft Customers in Water/Wastewater

Narragansett Bay Commission Water Industry Profile

- Implemented in 17 countries
- Enhances quality of life for millions of people
- Water and wastewater treatment
- Water distribution and wastewater collection
- Irrigation
- Desalination
- Hydrology and metering



Greater Vancouver Regional District



Central Valley Water



MWRA



TULSA METROPOLITAN UTILITY AUTHORITY



Proven Industry Examples

Some customer solutions around the world are:

- **Energy Optimization**
- **Asset Management**
- **Reduce Water Leakage / Wastewater Infiltration**
- **Water Quality / Environmental Compliance**
- **Metering (Automated AMI/AMR or Manual)**
- **Enable Business Integration**
- **Corporate Sustainability**

Vitens – From Data to Information

Peter van den Heuvel
Logica

Agenda

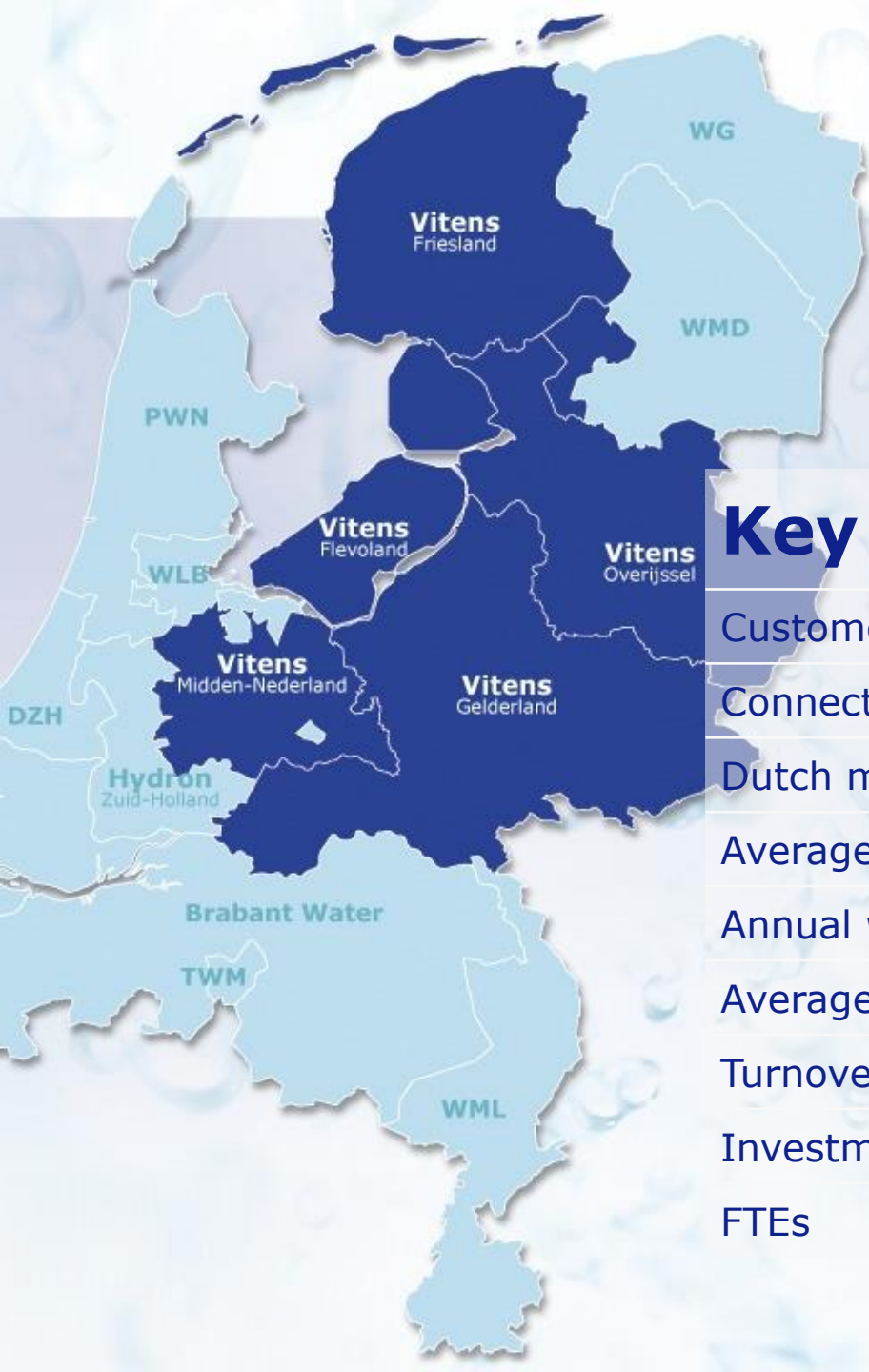
1 The Vitens organization

2 The Business Case

3 Uniform Operational Management

4 Real Time Performance Management

5 Vitens: Ready to generate the Value



Key figures 2008

Customers	5.4 million
Connections	2.3 million
Dutch market share	31%
Average daily consumption (per head)	124 litres
Annual water sales	330 million m ³
Average consumer price (inc. VAT)	€1.32/m ³
Turnover	€475 million
Investments 2006-2010	€125 million
FTEs	1,238

Logica as a global sourcing partner



logica

Logica in Manufacturing today

- Over 30 years experience in Manufacturing Systems
- 1300 employees across 16 countries delivering Manufacturing systems and consulting services
- Focusing on: Chemicals, Oil and Gas, food & beverages, pharma, metals and Energy and Utilities industries
- Specific domain experience in MES, SCM and PLM.
- Providing business consultancy, system integration and maintenance & support (24/7)
- Supporting plant-to-enterprise integration (ERP-MES-PA)
- Strategic Partnerships with Microsoft and SAP
- Leading role in MESA, and produce the annual survey of Manufacturing Execution Systems (MES)



Strategic focus of Vitens

- Lowering costs, improving quality
- Innovation and research
- Personnel and organisation
- International
- Water-chain integration



Agenda

1 The Vitens organization

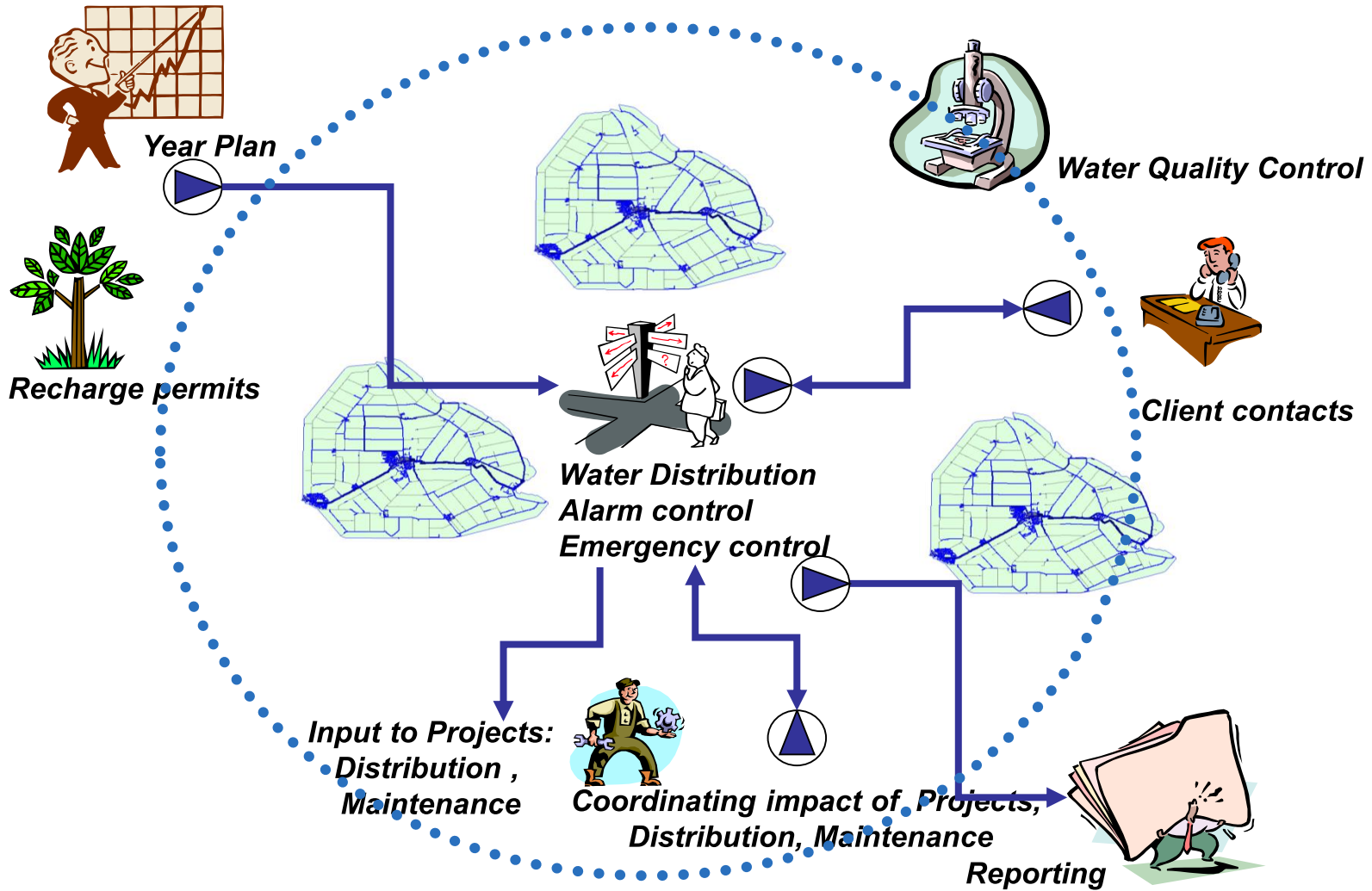
2 The Business Case

3 Uniform Operational Management

4 Real Time Performance Management

5 Vitens: Ready to generate the Value

Business Processes



Challenges of Vitens

- Uniform Operational Management
- Uniform Business Processes
- Uniform Process Data
- Uniform ERP – MES - PA
- Centralization of Maintenance & Support

Policy of Vitens

- SAP unless... and PI unless...
- Each (Process)Functionality supported by one and only one application
- Information allocated to one source
- Minimize interfaces
- Only certified interfaces
- Keep process control As-Is
- Standardisation
- Based on ISA-95 structure

Objectives for Vitens

- Standardization of Processes
- Uniformity of Process Structure
- Realtime Based Management Information
- Fast realisation of Changes and new Technologies
- Less costs ICT
- Fast Failure Response
- Integration of SAP, GIS and LIMS

Agenda

1 The Vitens organization

2 The Business Case

3 Uniform Operational Management

4 Real Time Performance Management

5 Vitens: Ready to generate the Value

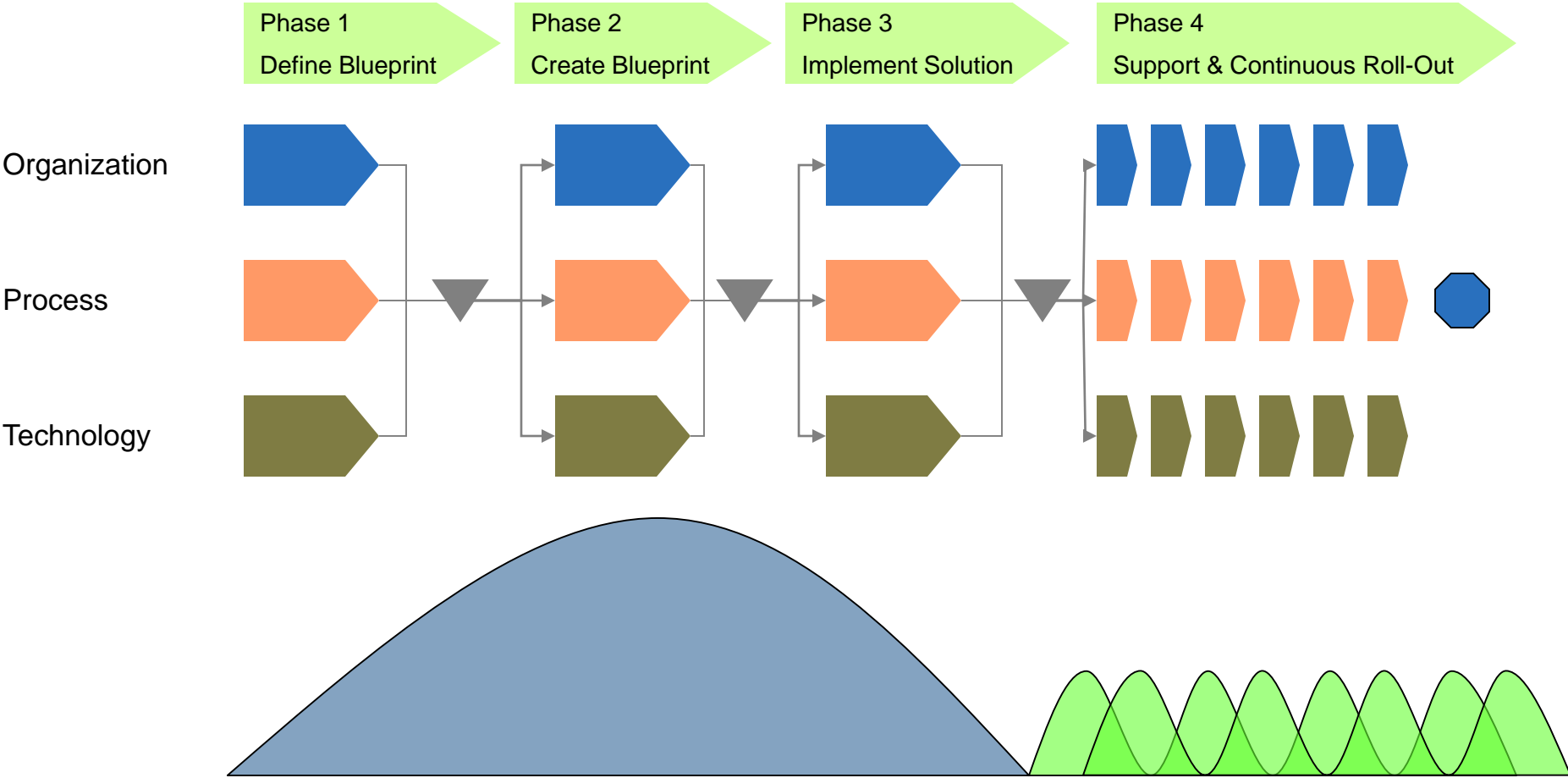
The image features a circular formation of skydivers in freefall against a cloudy sky. One skydiver in the lower right is highlighted in bright yellow. Three large, semi-transparent blue arrows point from the skydivers towards three blue circular nodes. The nodes are labeled 'Tools' (top), 'People & Organization' (bottom left), and 'Business Processes' (bottom right).

Tools

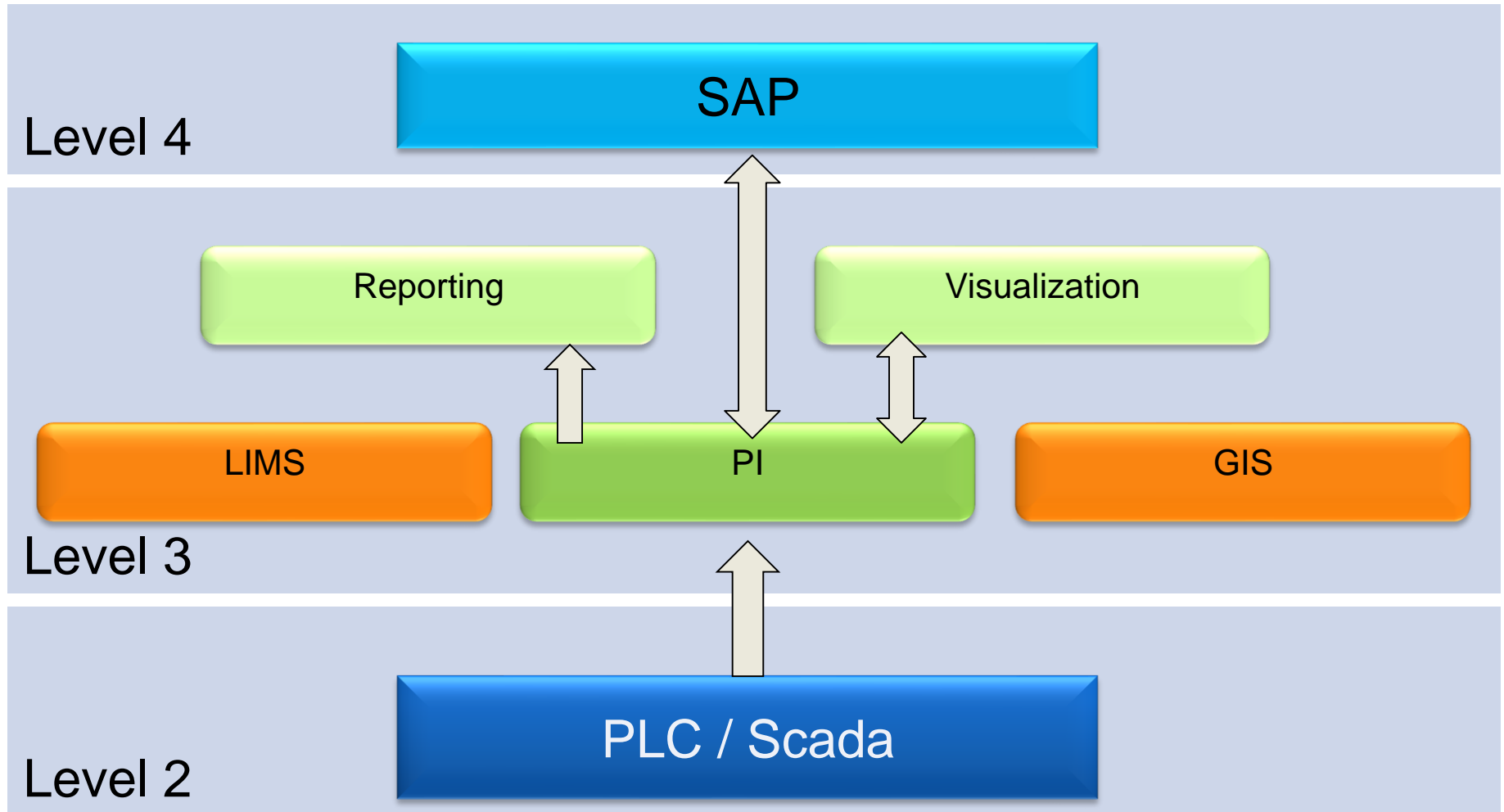
People &
Organization

Business
Processes

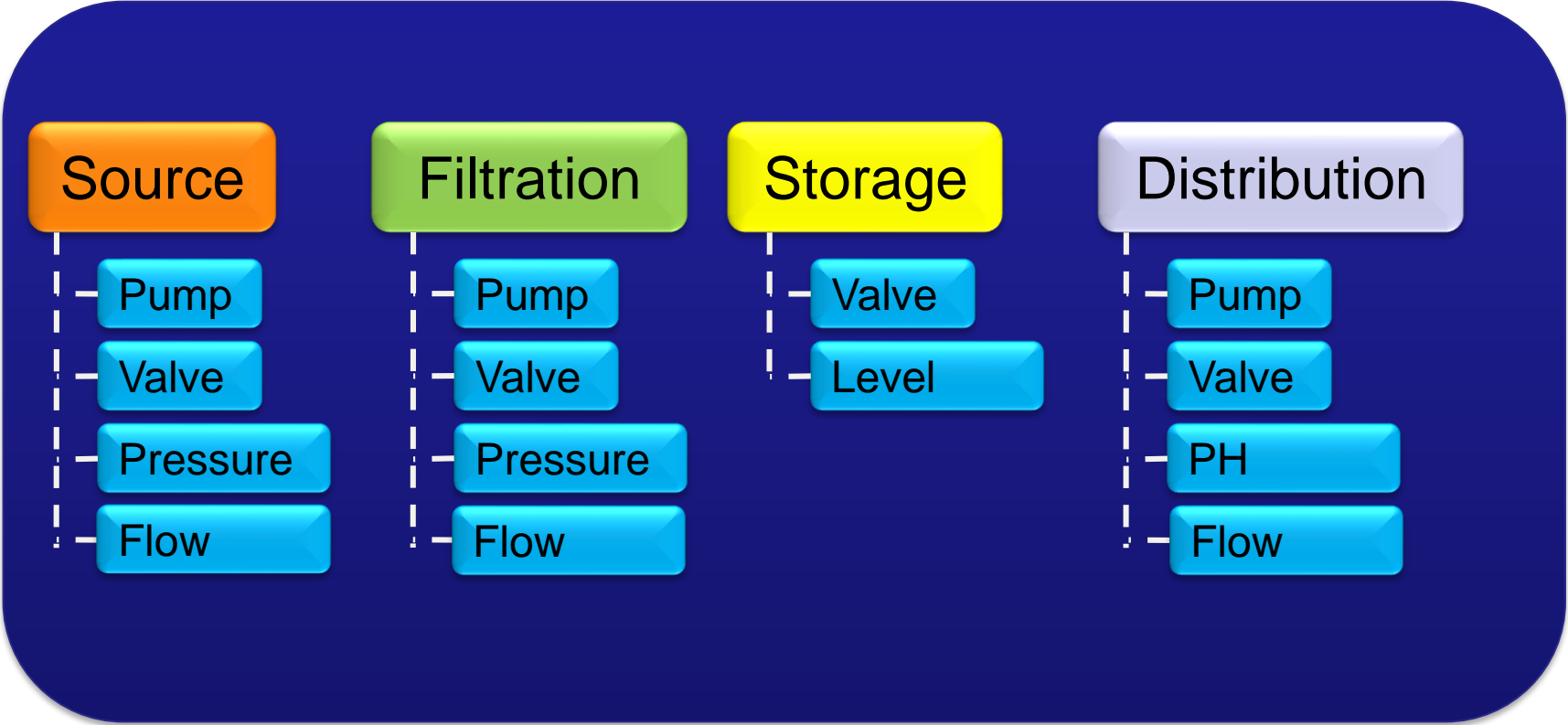
Multisite Project Approach



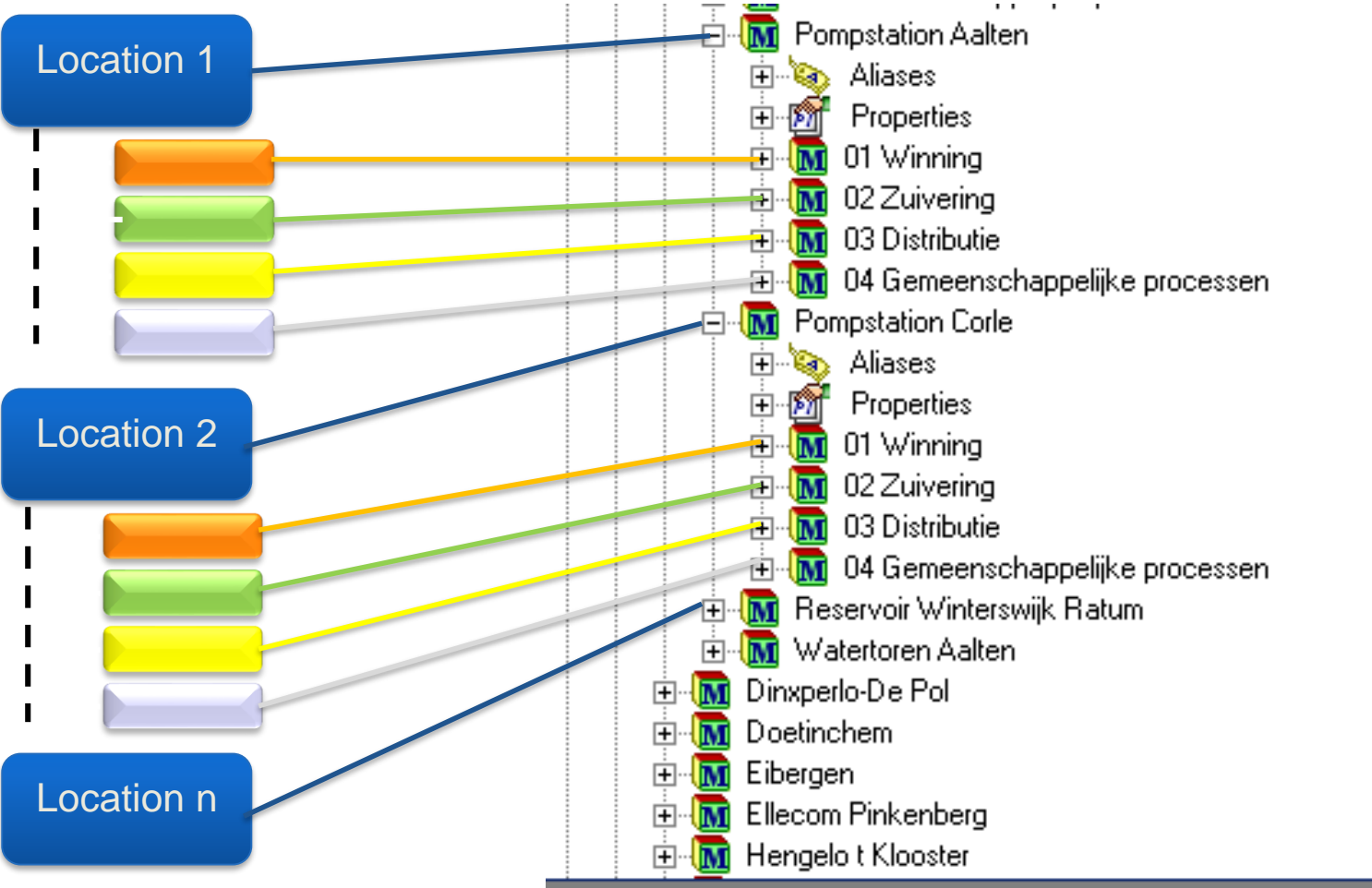
RT Enterprise Architecture



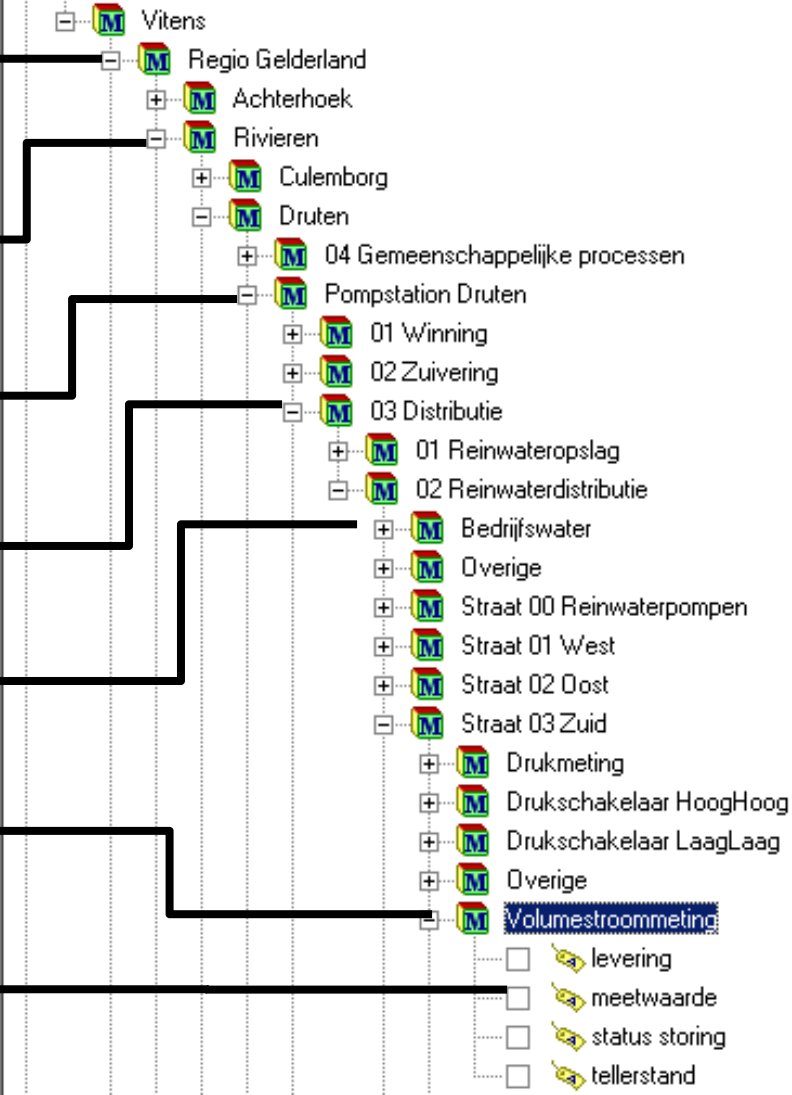
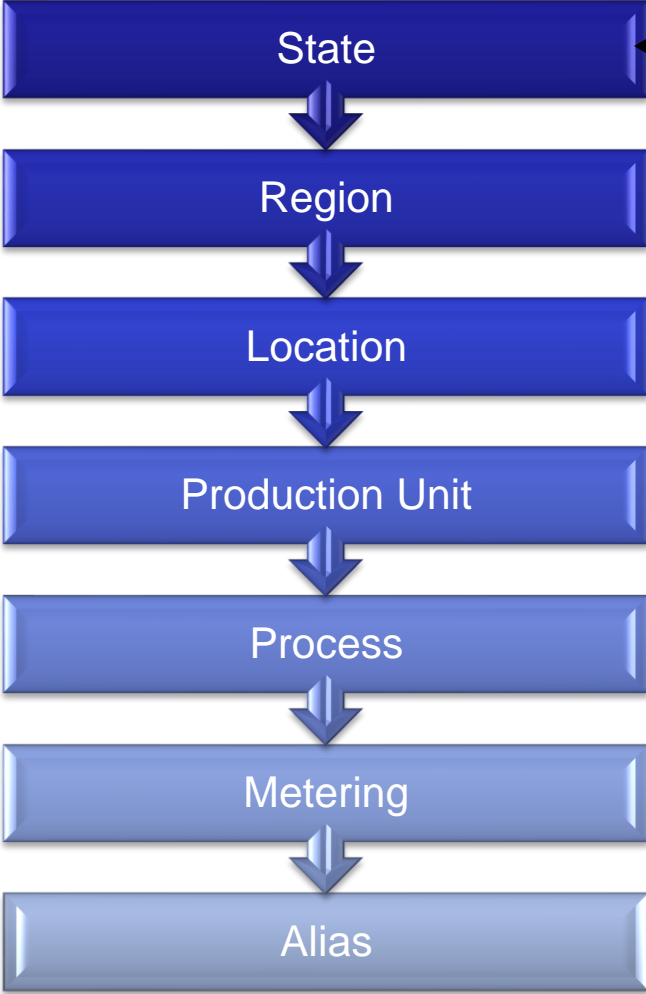
Standardization of Processes



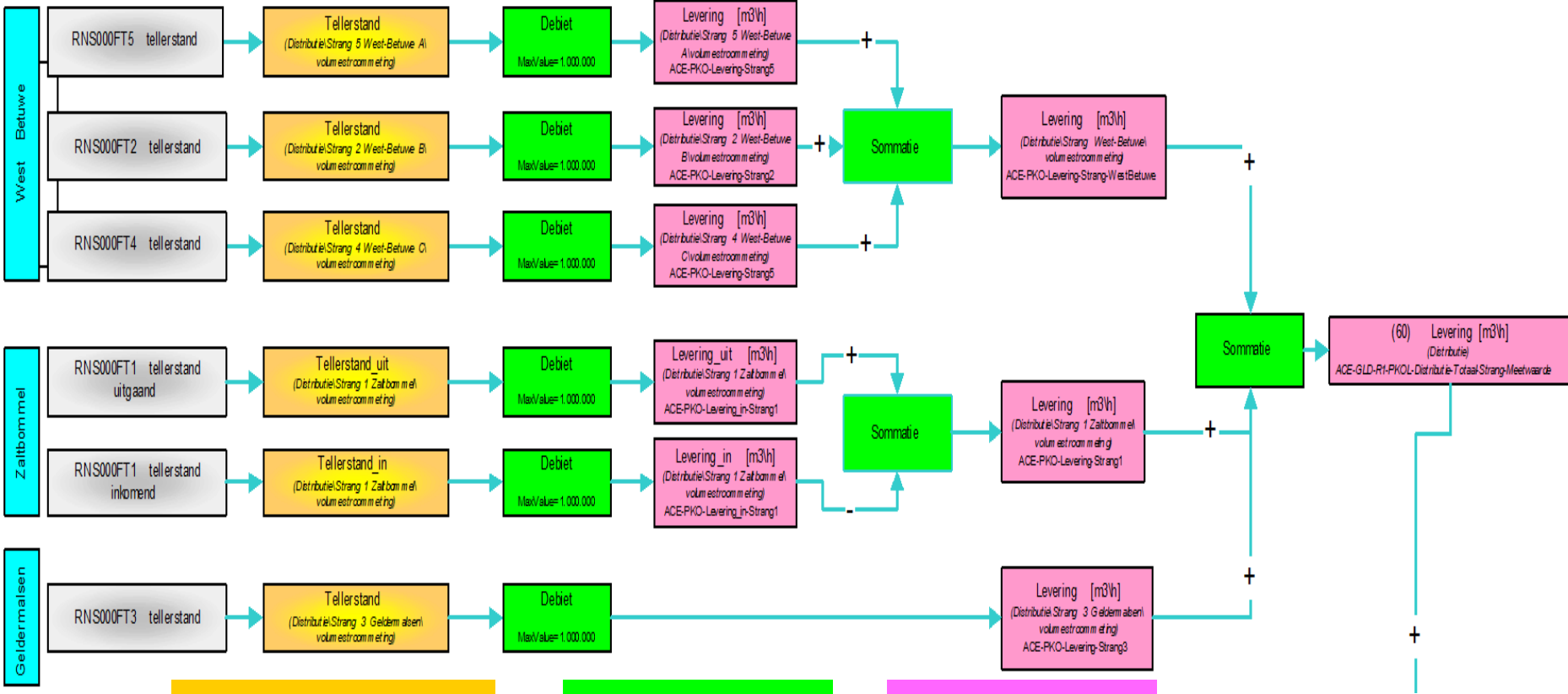
Standardization the process



Standardization the process



Standardization of Calculations

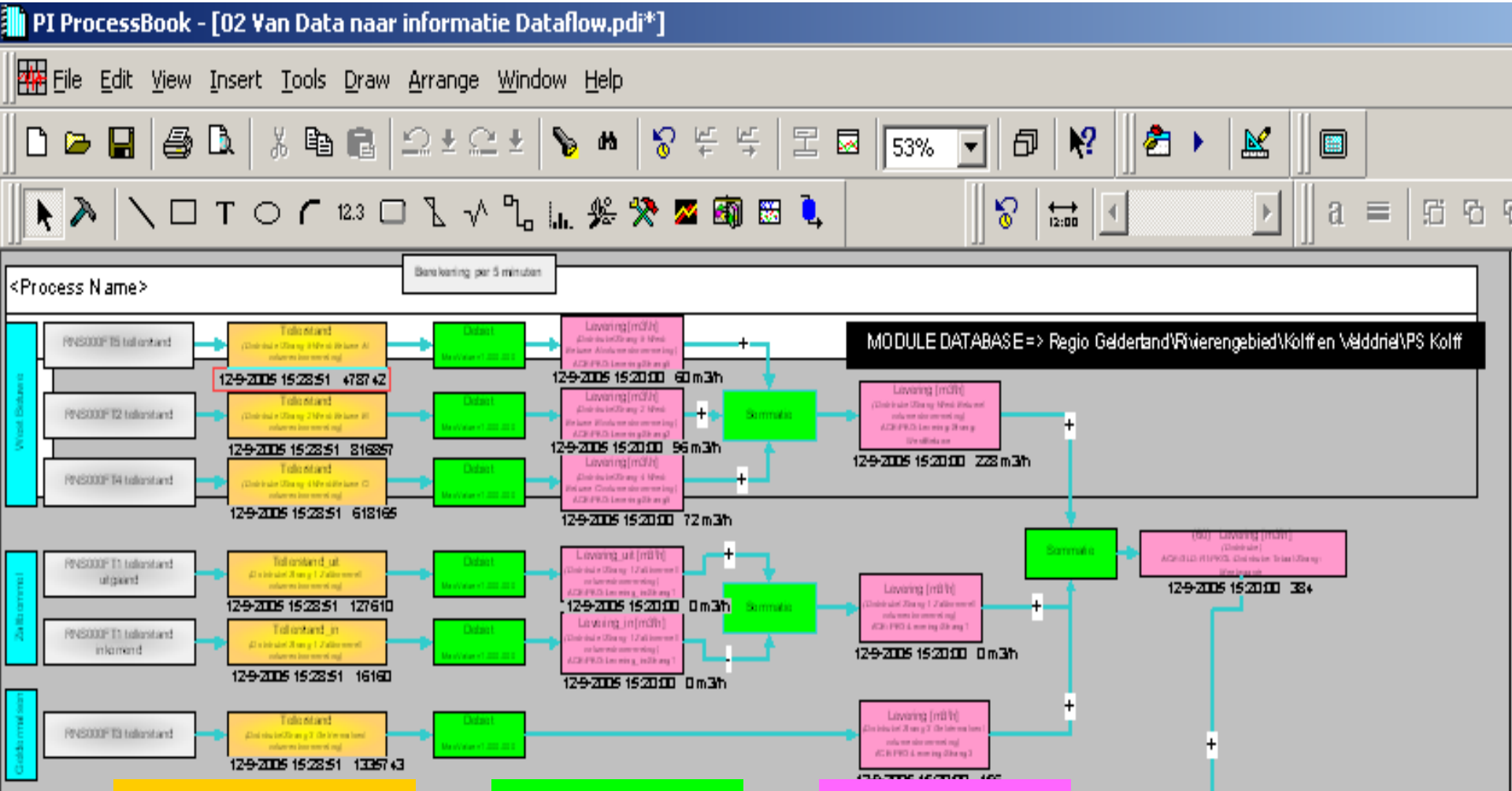


Golden Tag

ACE

Result

Standardization of Calculations



Agenda

1 The Vitens organization

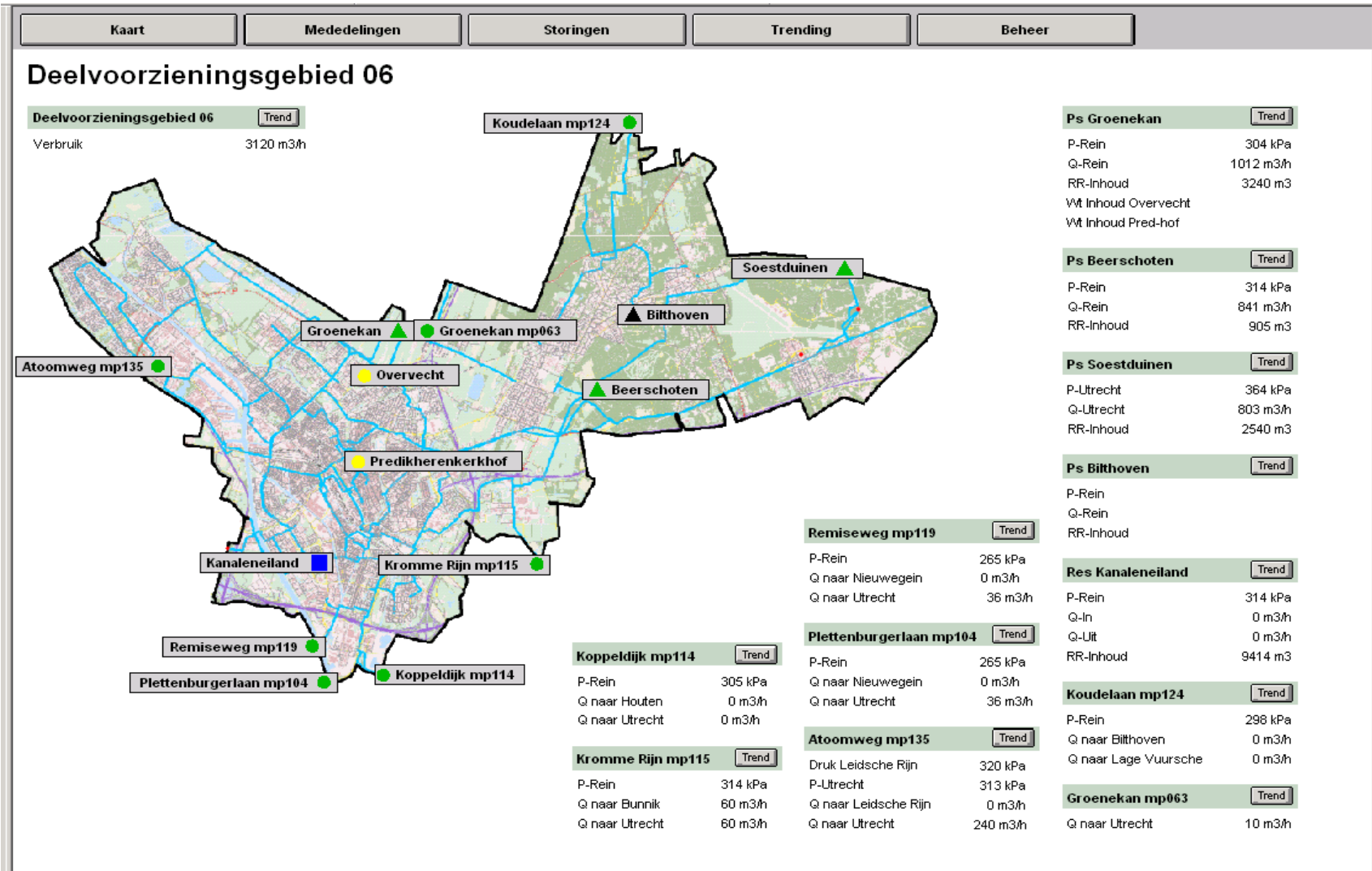
2 The Business Case

3 Uniform Operational Management

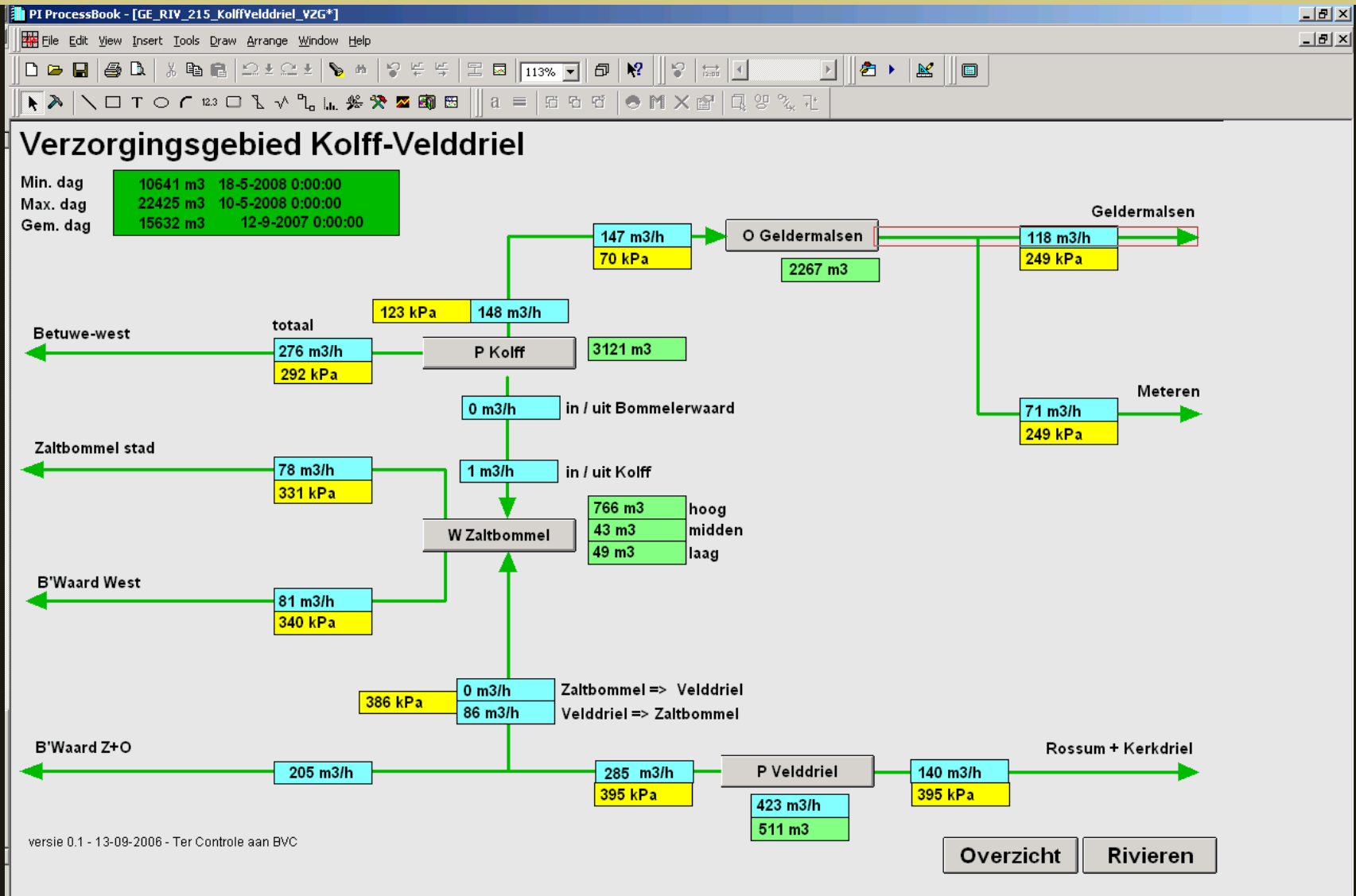
4 Real Time Performance Management

5 Vitens: Ready to generate the Value

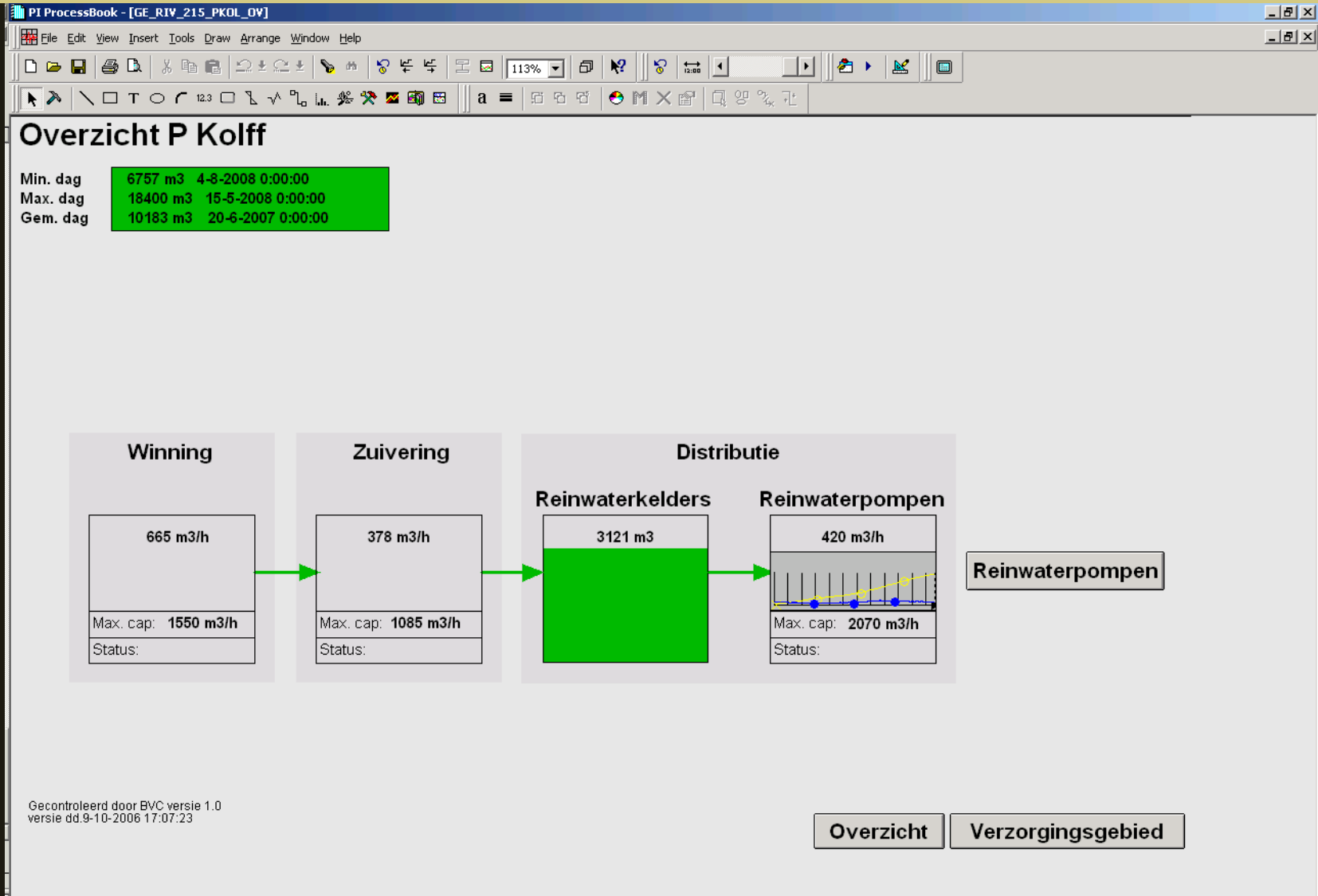
Uniform Visualization



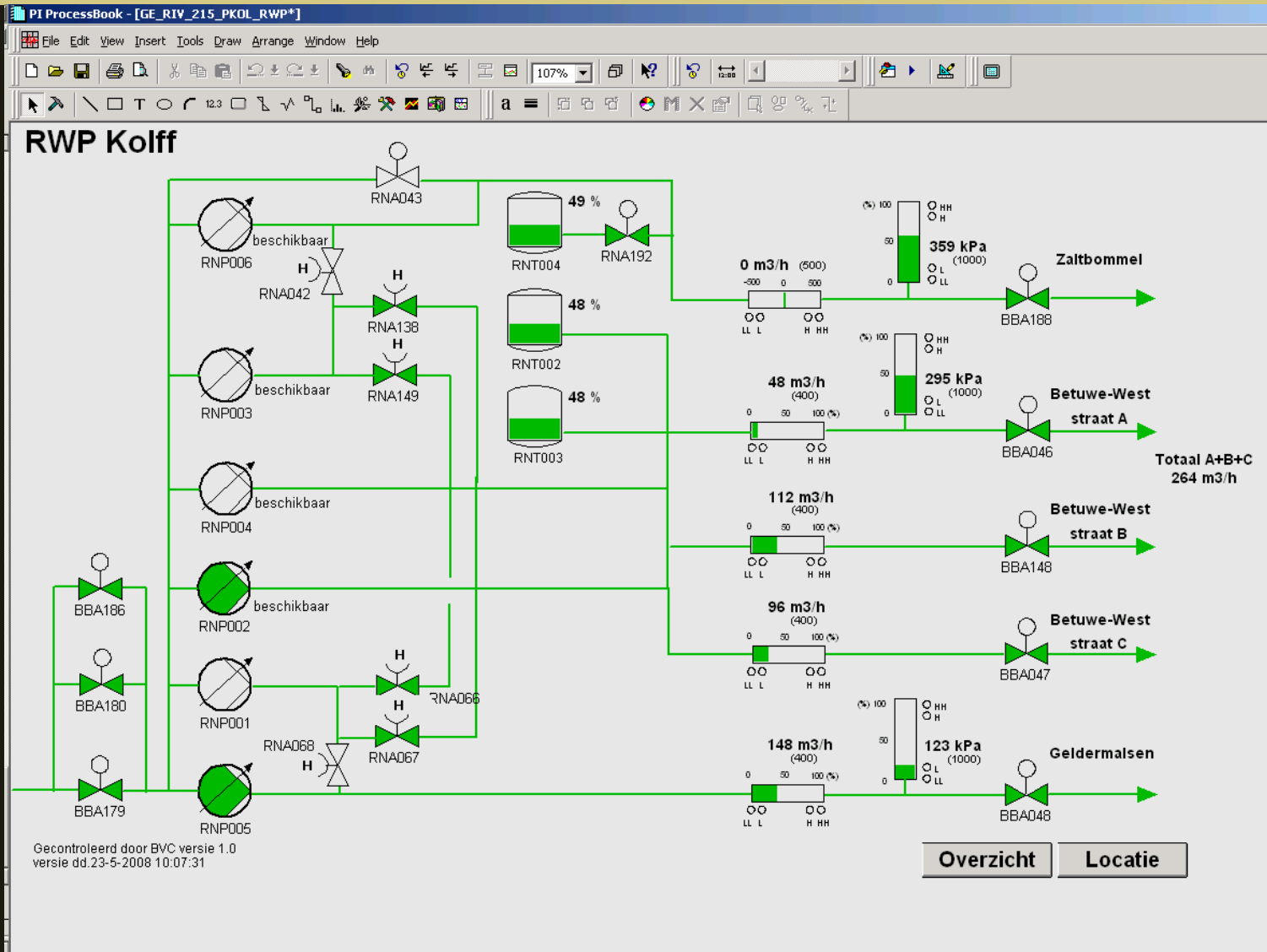
Uniform Visualization



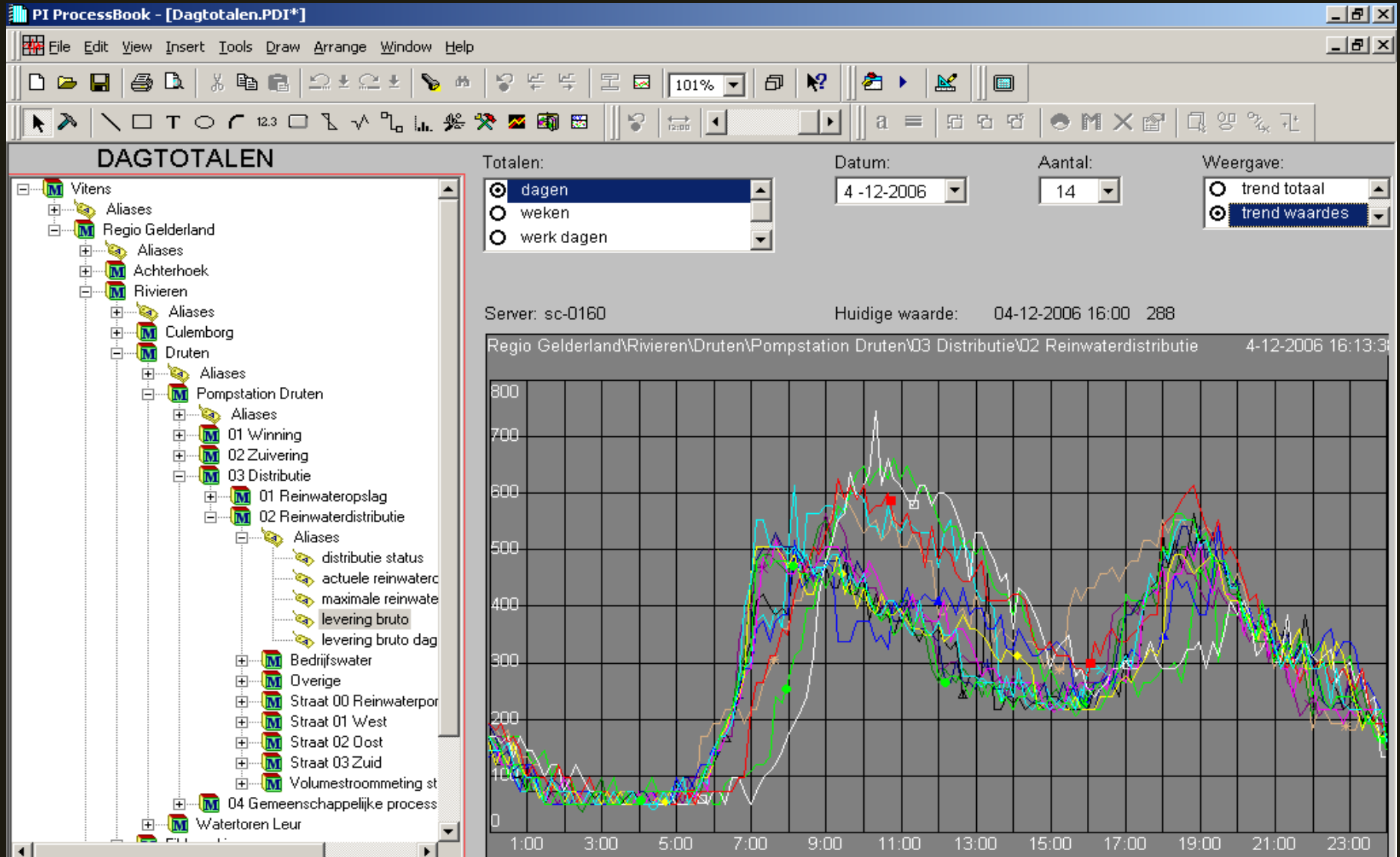
Uniform Visualization

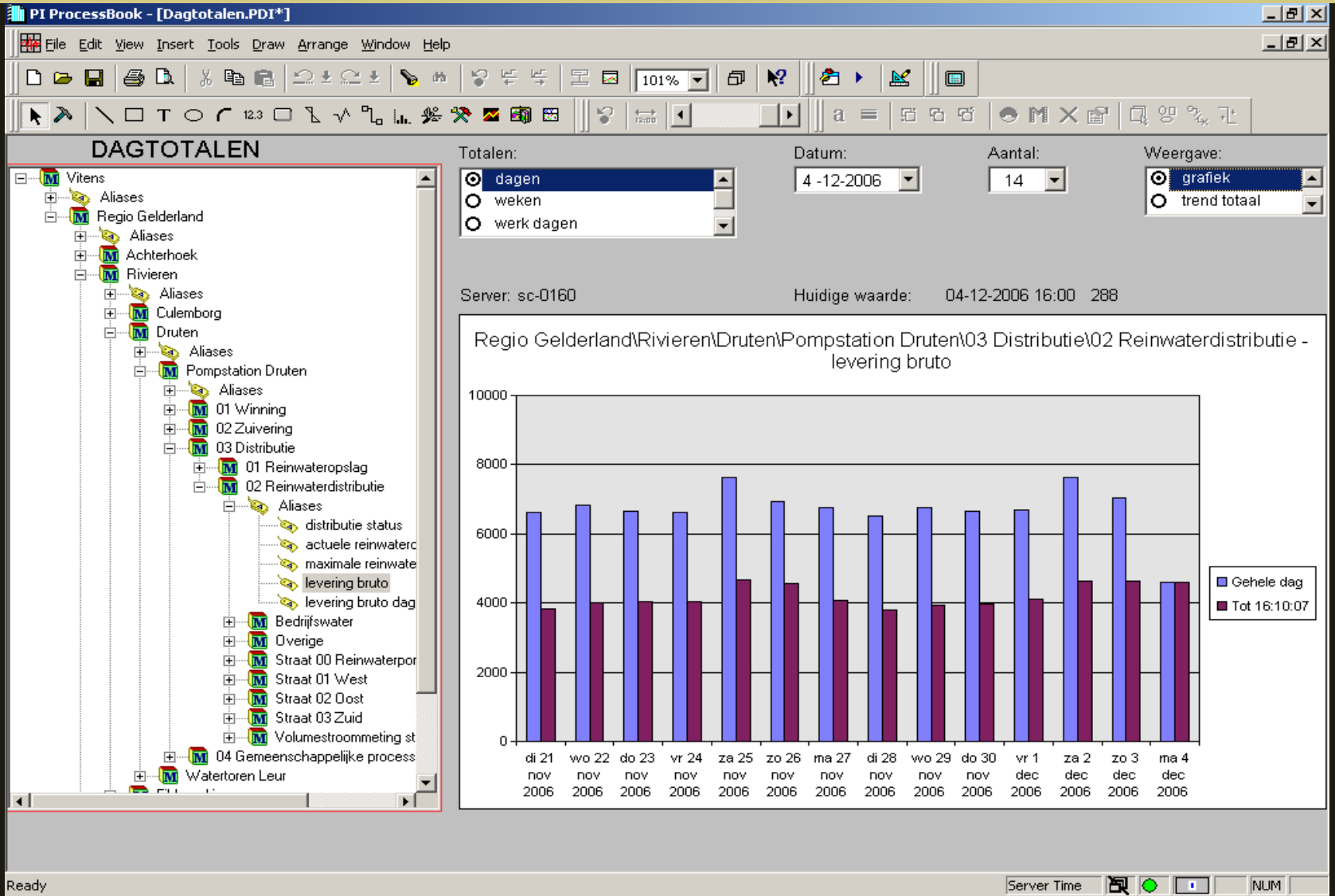


Uniform Visualization



Visualization based on structure





Reporting based on structure



Bedrijfsrapport

Selecteer locatie

sc-0160

- Vitens
 - Regio Gelderland
 - Achterhoek
 - BEW-Varsseveld
 - Corle-Aalten
 - 04 Gemeenschappelijke proces
 - Pompstation Aalten**
 - Pompstation Corle
 - Reservoir Winterswijk Ratum
 - Watertoren Aalten
 - Dinxperlo-De Pol

Pompstation Aalten

11-9-2008 11:47:13 : Nieuwe locatie.

\\sc-0160\Vitens\Regio Gelderland\Achterhoek\Corle-Aalten\Pompstation Aalten

versie 0.3 - 07-jan-2008

Selecteer startperiode

september 2008

ma	di	wo	do	vr	za	zo
25	26	27	28	29	30	31
1	2	3	4	5	6	7
8	9	10	11	12	13	14
15	16	17	18	19	20	21
22	23	24	25	26	27	28
29	30	1	2	3	4	5

01-sep-2008

Selecteer eindperiode

september 2008

zo	ma	di	wo	do	vr	za
31	1	2	3	4	5	6
7	8	9	10	11	12	13
14	15	16	17	18	19	20
21	22	23	24	25	26	27
28	29	30	1	2	3	4
5	6	7	8	9	10	11

10-sep-2008

Rapport maken

Agenda

- 1 The Vitens organization
- 2 The Business Case
- 3 Uniform Operational Management
- 4 Real Time Performance Management
- 5 Vitens: Ready to generate the Value**

The realized Values

- Business Processes are standardized
- One Uniform structure over all locations
- Single Point Of Information
- New Functionalities build once use overall
- Centralization of Maintenance & Support
- Fast Failure Response

The future Values

- Integration with SAP-LIMS-GIS
- One Central PI-Server with High Availability
- Exchange PI-MdB into PI-AF
- Energy Safety Program
- Condition Based Maintenance



OSIsoft[®]

USER CONFERENCE

2008

AMSTERDAM



THANK YOU