



OSIsoft®

Regional Seminar Series



## Critical Facilities, Data Center, & IT

Mike Mihuc, Regional Manager Northeast, OSIsoft

Empowering Business in Real Time.

© Copyright 2009, OSIsoft Inc. All rights Reserved.

## State of Market


- Need to reduce costs
- Public requirement to promote sustainable policies
- Data centers are running out of capacity
- Potential Federal and State regulations

Lines of Business/ Operations

IT Infrastructure

Data Center Infrastructure

Facility Infrastructure



Did you know PI can be applied to these infrastructure's for great value

# Some Example Customers

## Facility Customers



**Kodak**

**IBM**



## Data Center Customers



- Kodak Park facts

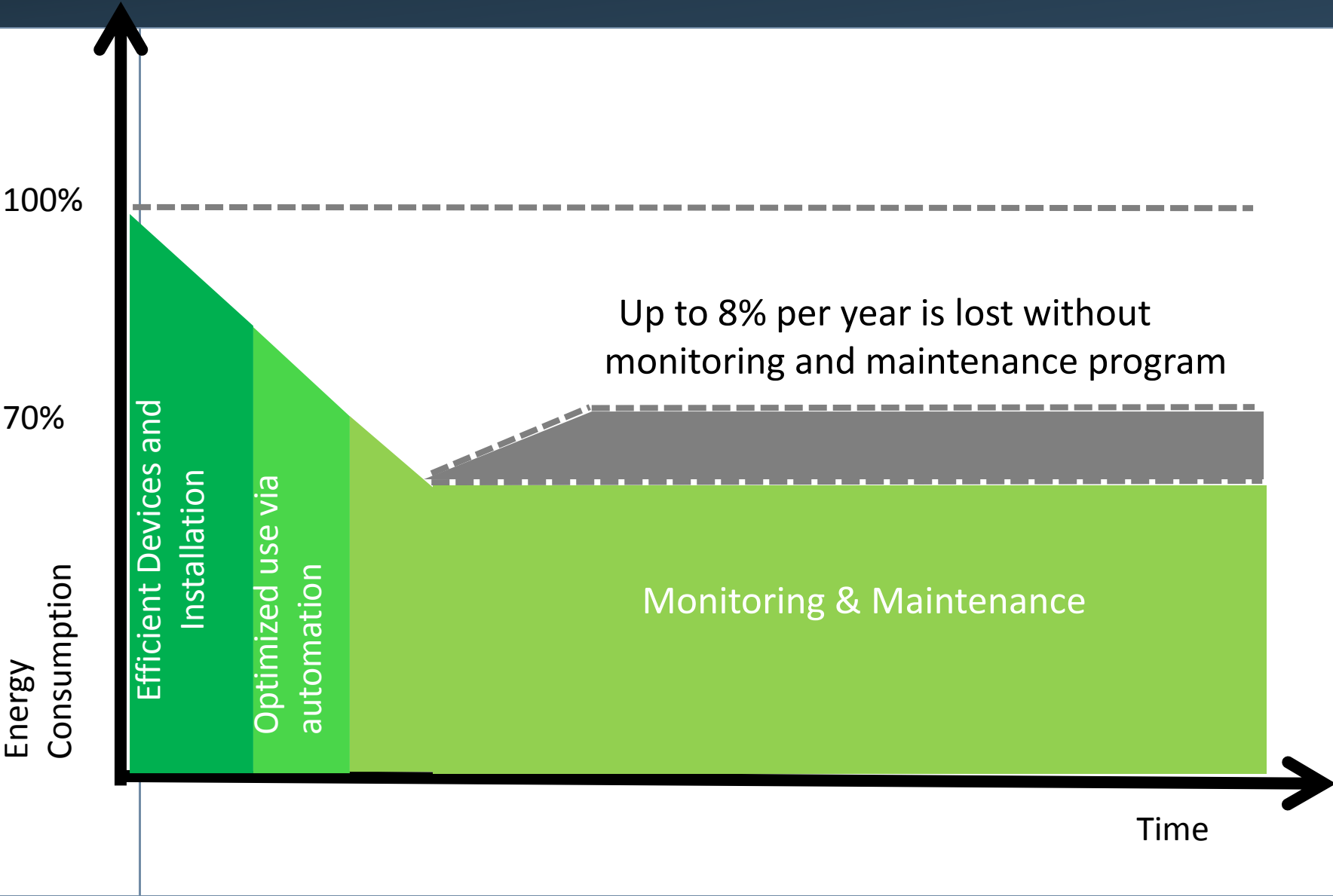
- Area > 20,000,000 Square Feet
- 11,000 Employees
- Operates its own Fire Department
- Operates its own rail road
- Performs its own water and waste water treatment
- Operates 2 power plants

Measurements

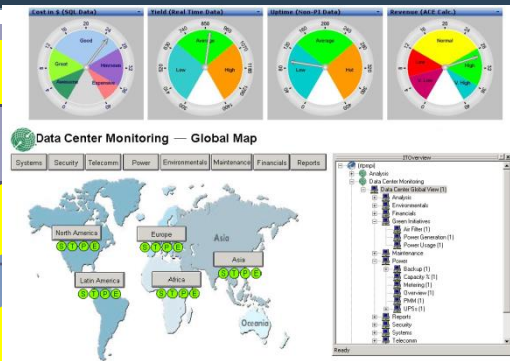
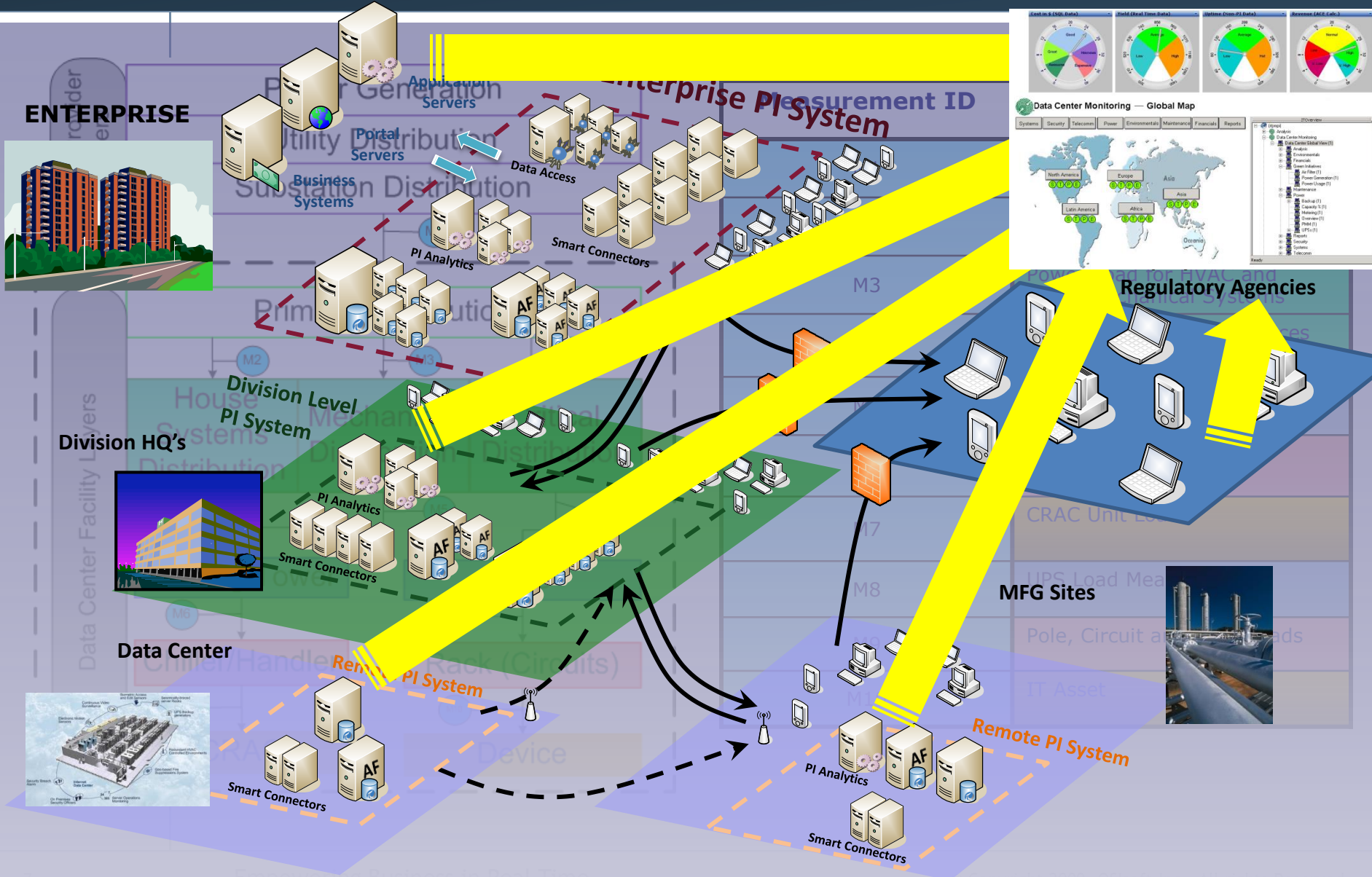
- Benefits > \$10MM !

- 600 **Electric** Distribution **Meters**
- 600 Additional Distribution **Meters** for Steam, Chilled water, Brine, Compressed air, Process water, Nitrogen, Natural gas etc.
- Significant **Metering** Used within the Power Houses to Manage the **Generation** Side

# Why PI FOR Energy Management

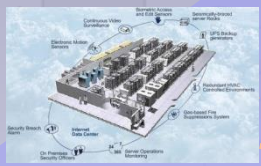


# What levels will PI Connect



Regulatory Agencies

MFG Sites



## System Components

- OSIsoft PI System - captures data from all meters, plant control system, and building automation systems
- Revenue Meter Interface
- Plant Control System & Meters
- Building submeters
- Building automation systems
- Network

## Measurements

- **Hot water** meters
- **Electric** meters (including HV substations)
- Assorted **gas, oil** & other meters
- **Chilled water** meters
- **Steam** meters



## Engage with OSIsoft for understanding how

### Expand the use of PI For IT –

How to Utilize:  
MCN Health Monitor  
PI for IT Monitoring

### Expand the use of PI for Critical Facilities

How to Utilize  
Add- PI Interfaces BACnet,  
Modbus, OPC

## Take advantage of Benefits

"While metering alone does not save energy, the information from the meters, when acted on, can result in significant reductions — typically **5 to 15 percent**"

- Jean Lupinacci, Director, Commercial and Industrial Branch of Energy Star<sup>®</sup>
- U.S. Environmental Protection Agency (EPA)

# PI expansion update- see for yourself



## UC Davis

<http://facilities.ucdavis.edu/Dashboard/>

## Queen's University

<http://livebuilding.queensu.ca/>

## Rochester University

<http://meters.energy.rochester.edu/rc%20sharepoint%20files/hutch%20hall%20electric.aspx>

## 2009 User Conference Critical Facilities Track -

[Industry Observations and Trends](#) (David Jump, Quantum Energy) - [PPT](#)

[The Daily Miracle of Internet Connectivity \(PI Data Centers\)](#) (Greg Dumas, DST Controls, Ernest Holloway, Pamela Brigham, Equinix) - [PPT](#)

[Real time Data for Data Center and Lab Energy Efficiency](#) (Chris Nolan, Cisco Systems, Ken Morikawa, OSIsoft) - [PPT](#)

[The Data Center Dashboard](#) (Steven Berkovich, Teresa Tung, Accenture) - [PPT](#)

[Understand How PI is being used at Microsoft in the 10min. Wrap](#) (Scott Mauvais, Microsoft Technology Center) - [PPT](#)



Thank you

© Copyright 2009 OSIsoft, Inc.

777 Davis St., Suite 250 San Leandro, CA 94577