

# “Information Everywhere” at Mohawk Fine Papers

Ben Whitaker

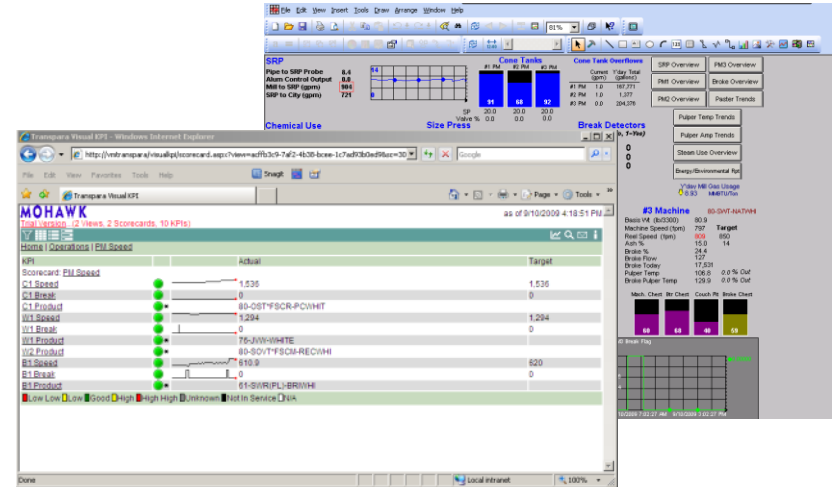
Manager, Enterprise Process Reengineering

**MOHAWK**  
MOHAWK FINE PAPERS

**The Challenge:** Complete and consistent information delivery in all systems. A users sees what he or she needs to see in the system most effective for their role.

*“I live and die by this. I’m on it all the time”*

*Bob Scammell, Vice President of Manufacturing*



### Customer Business Challenge

- Many effective tools, but none presents the complete picture
- Too much shuffling between systems to get answers
- Focus on the core strengths of each tool, but bring in other data where needed
- No capacity for “big” data warehouse solution

### Solution

- More effective interfacing between systems for better information within systems
- Better inquiry tools - KPIs and Dashboards - and better delivery mechanisms for delivery across systems

### Customer Results / Benefits

- Align the organization top-to-bottom on customer satisfaction, product quality, and operational performance
- Rapid decision making to support business flexibility
- Better and better cost management

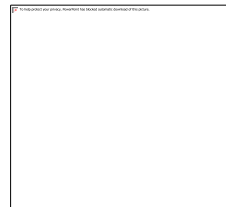
# Mohawk Fine Papers

The world's largest collection of premium papers

Focus on print performance, environmental responsibility, and bringing customer value



**MOHAWK**



**Marketplace**

# Premium Grade Printing & writing Papers



Corporate  
Educational Institutions  
Office Supply Chains



# Operations

- Albany NY region, Hamilton OH, Saybrook OH
- Six paper machines, approx 30 converting workcenters
- Over 175,000 tons annual capacity



# Information Everywhere - Strategy

- Get operators better information within their system of choice through more effective data flow
  - “You see what you need to see in the tool that’s most effective for you”
- Gather and distribute information more effectively to managers

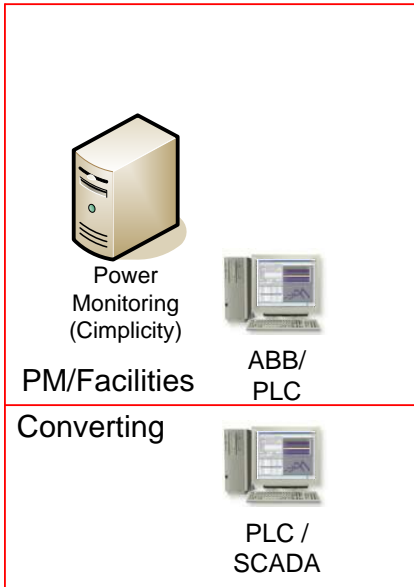
## Synchronize information and decision making

# Information Everywhere - plans

- Work incrementally - constantly work for benefits both small and large
- With the right tools, it's easier than some of us thought it would be

# Our Starting Point

NY



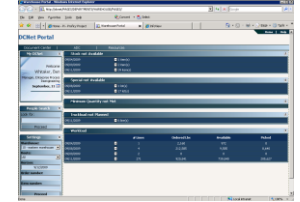
## Process Books



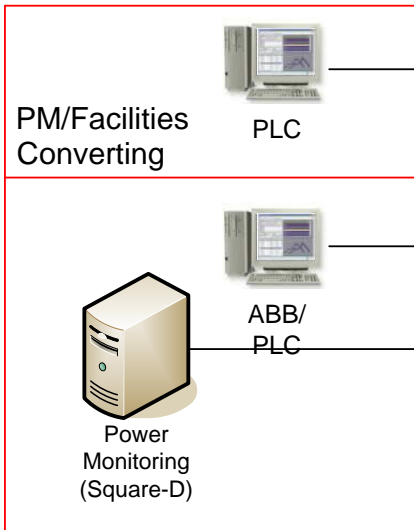
## Reports

Item	Unit	Value	Unit	Value
...	...	...	...	...

## Custom Web



OH



GE Historian



Pi Historian

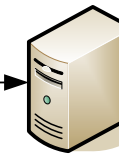
Production Reporting (Custom)



ERP (BPCS)

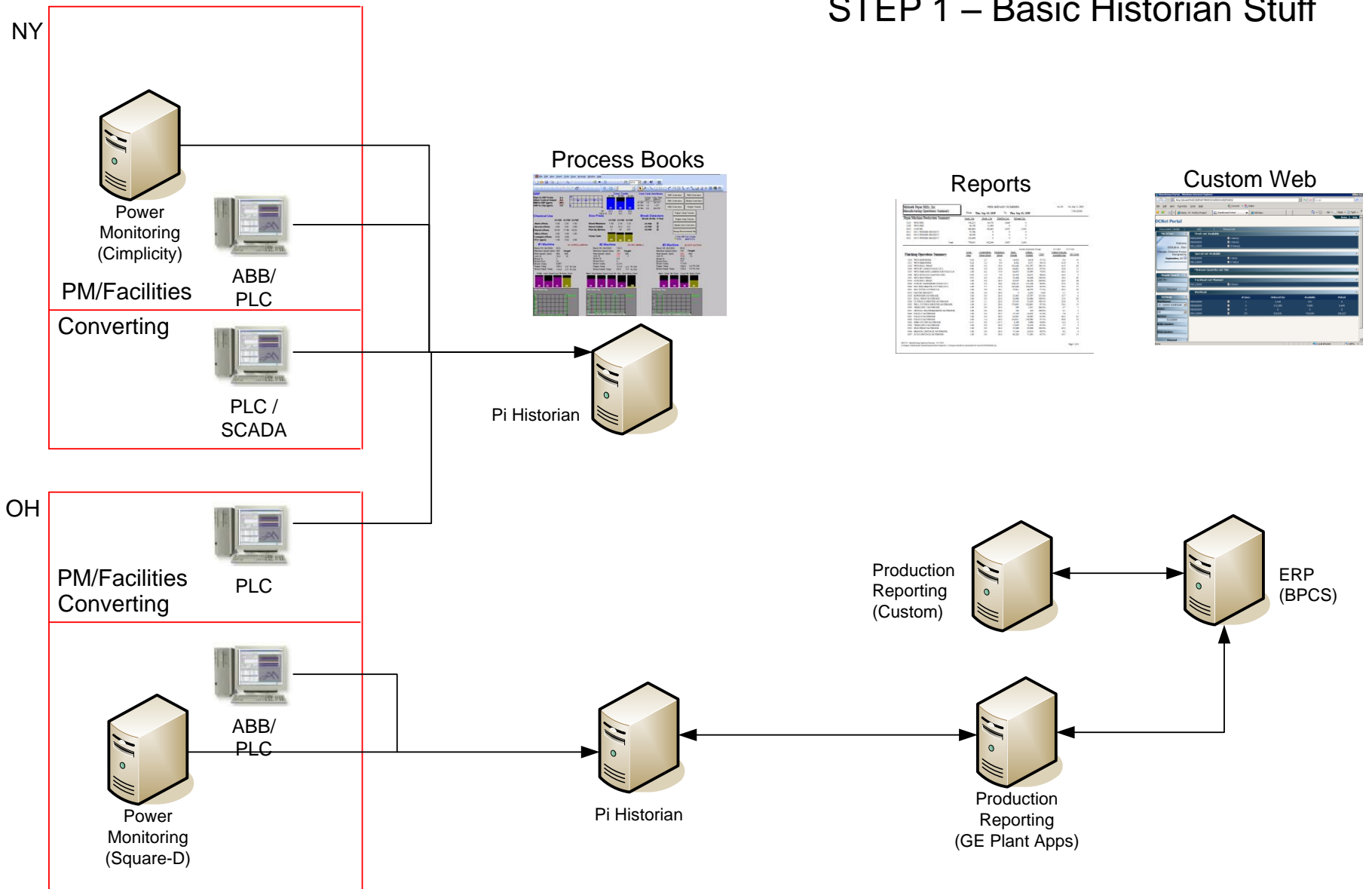


Production Reporting (GE Plant Apps)

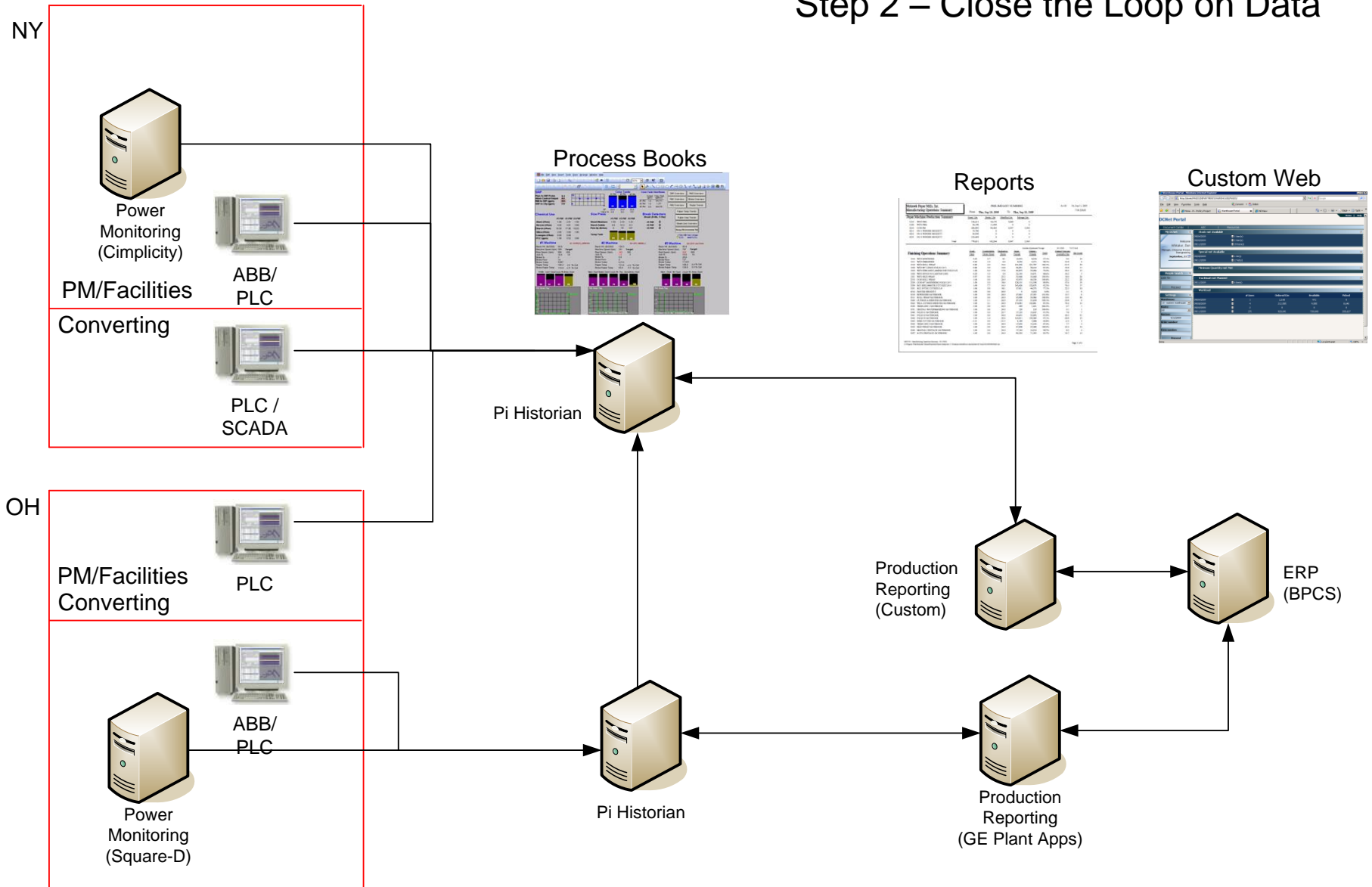




# STEP 1 – Basic Historian Stuff



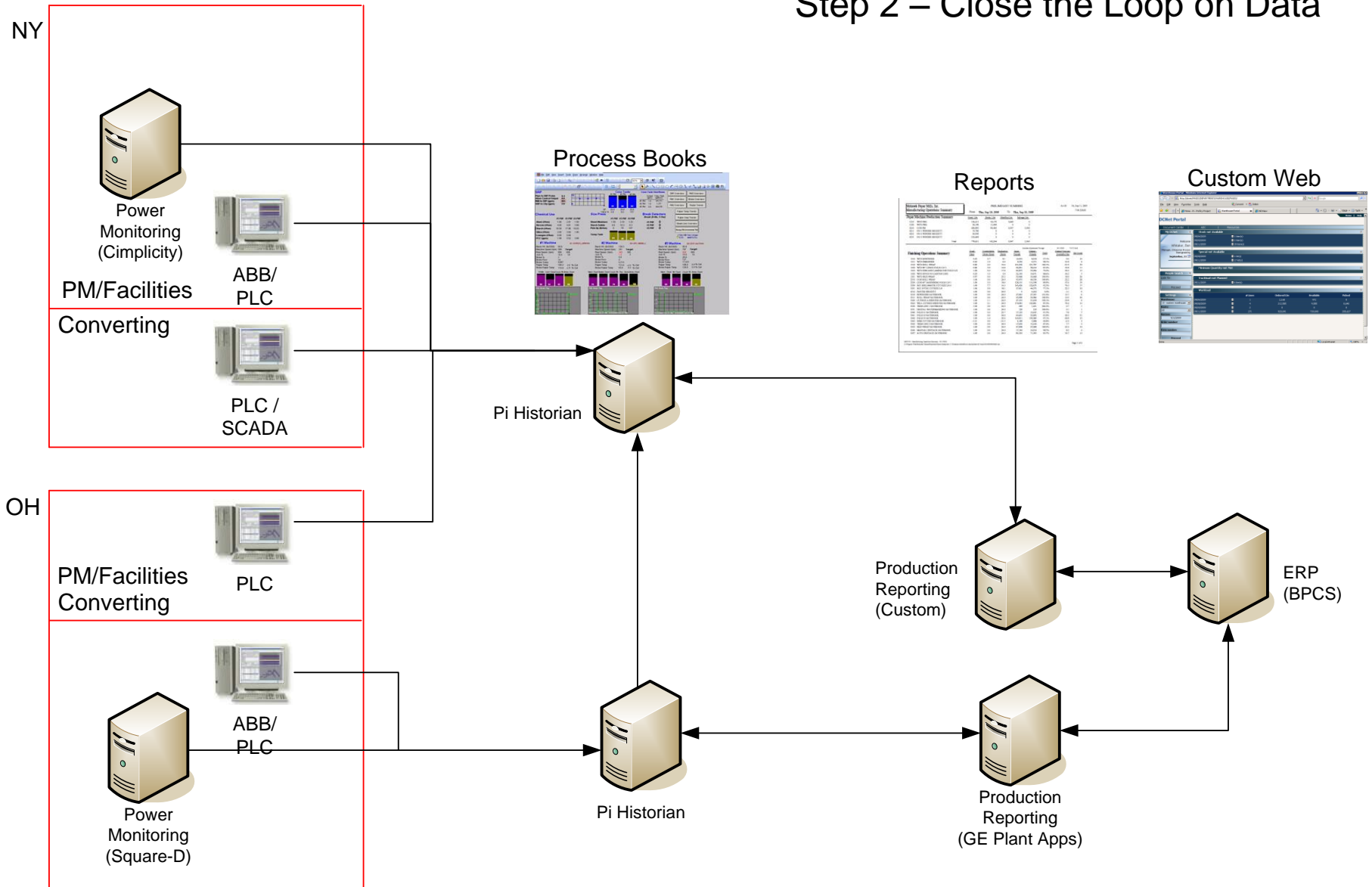
## Step 2 – Close the Loop on Data

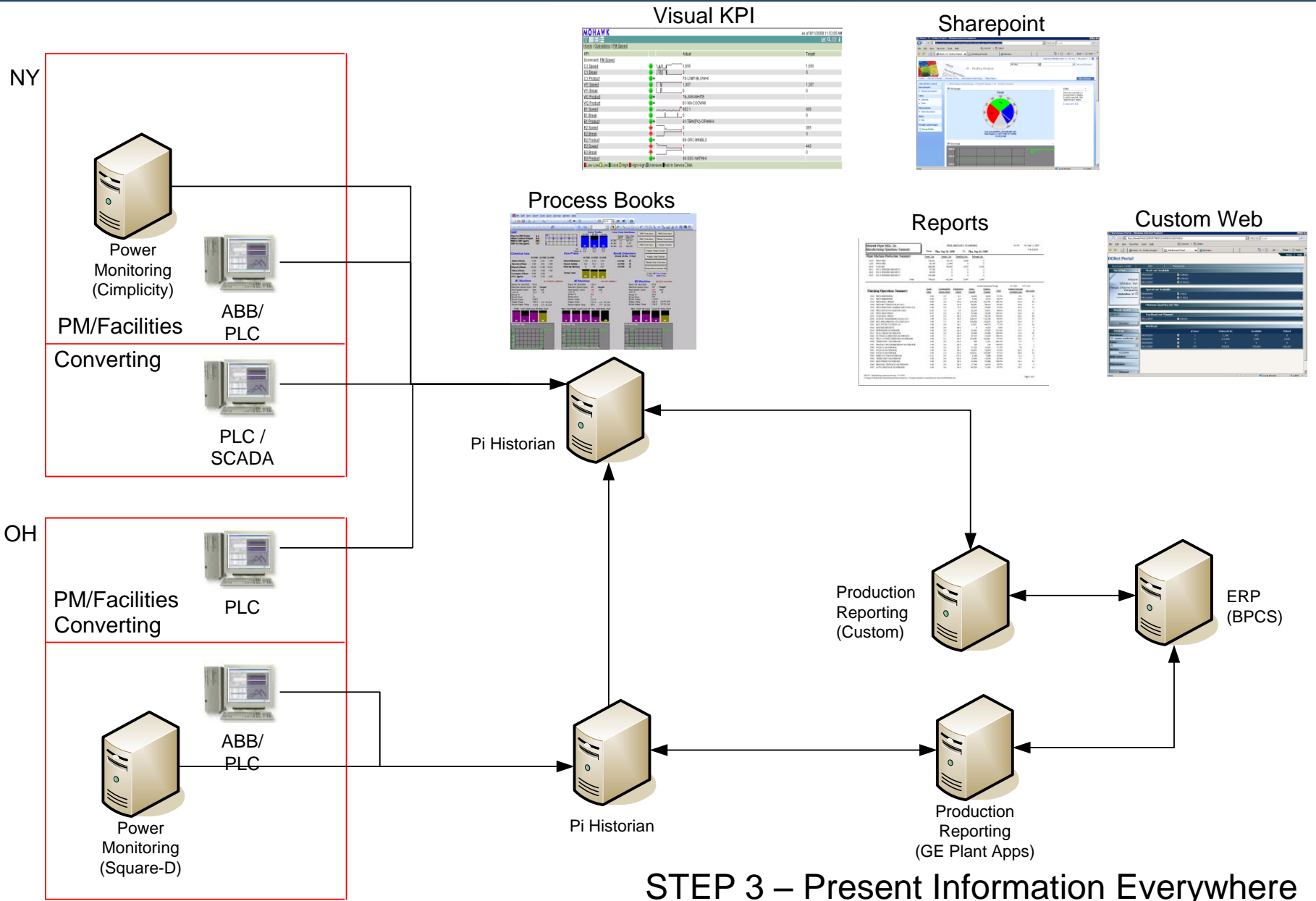


# Keys to Step 2

- SQL Tricks
  - Transforming production data into time-series data points
- PI Tricks
  - ODBC Interface
  - ODBC Client

# Step 2 – Close the Loop on Data





## STEP 3 – Present Information Everywhere

# Keys to Step 3

- PI Web Parts for Sharepoint
- Blackberry and Transpara's Visual KPI



# Web Parts

File Edit View Favorites Tools Help Convert Select

Home - Pi - Proficy Project Transpara Visual KPI InfoView

**Lists**

- Calendar
- Tasks

**Discussions**

- Team Discussion

**Sites**

- Wiki

**People and Groups**

- Recycle Bin

**RtGauge** edit x

**Gauge**

\\vm-coh-pi\NW11\_ST2226.MV; W1  
Reel Speed = 1327 FPM; 9/11/2009  
2:16:04 PM

**RtTable** edit x

Data Point	Time Stamp	Value
PMTOPBRWT-6210	9/11/2009 2:20:06 PM	0.000
PMTOPBRWT-4231	9/11/2009 2:20:06 PM	0.000
PMTOPBRWT-4221	9/11/2009 2:20:06 PM	0.000
PMTOPBRWT-4211	9/11/2009 2:20:06 PM	1490.000
PMTOPBRWT-2211	9/11/2009 2:20:06 PM	18937.000

Showing 1 to 5 of 100

**RtGraphic** edit x

**Speeds (FPM)**

- Bielomatic 654
- Evtac 376
- Cohoes HSR-60° 608
- SHM-Laminator 400
- Waterford HSR-80° 392
- Maxson -280
- Rewinder 1
- Embosser 44

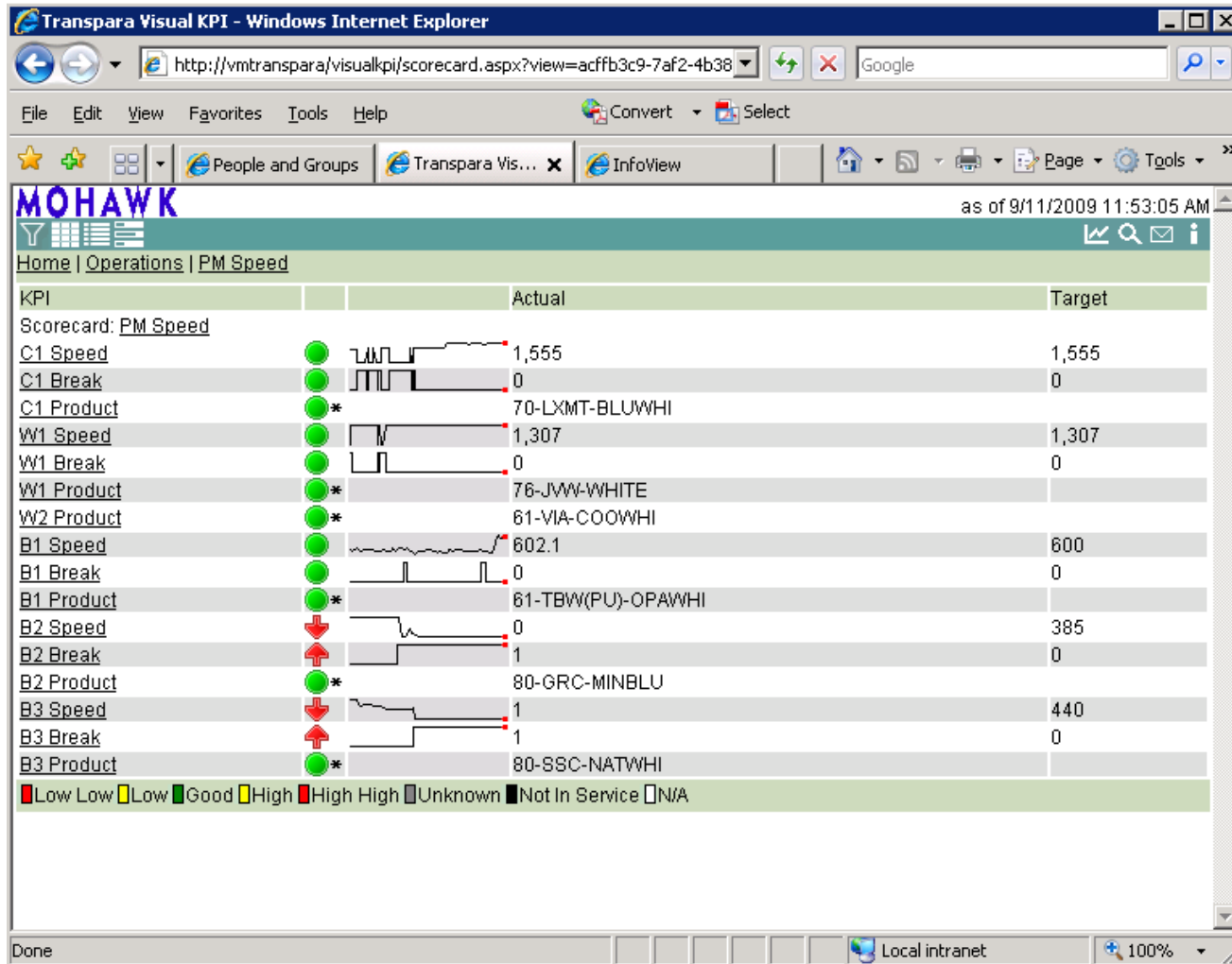
**Reams/Min**

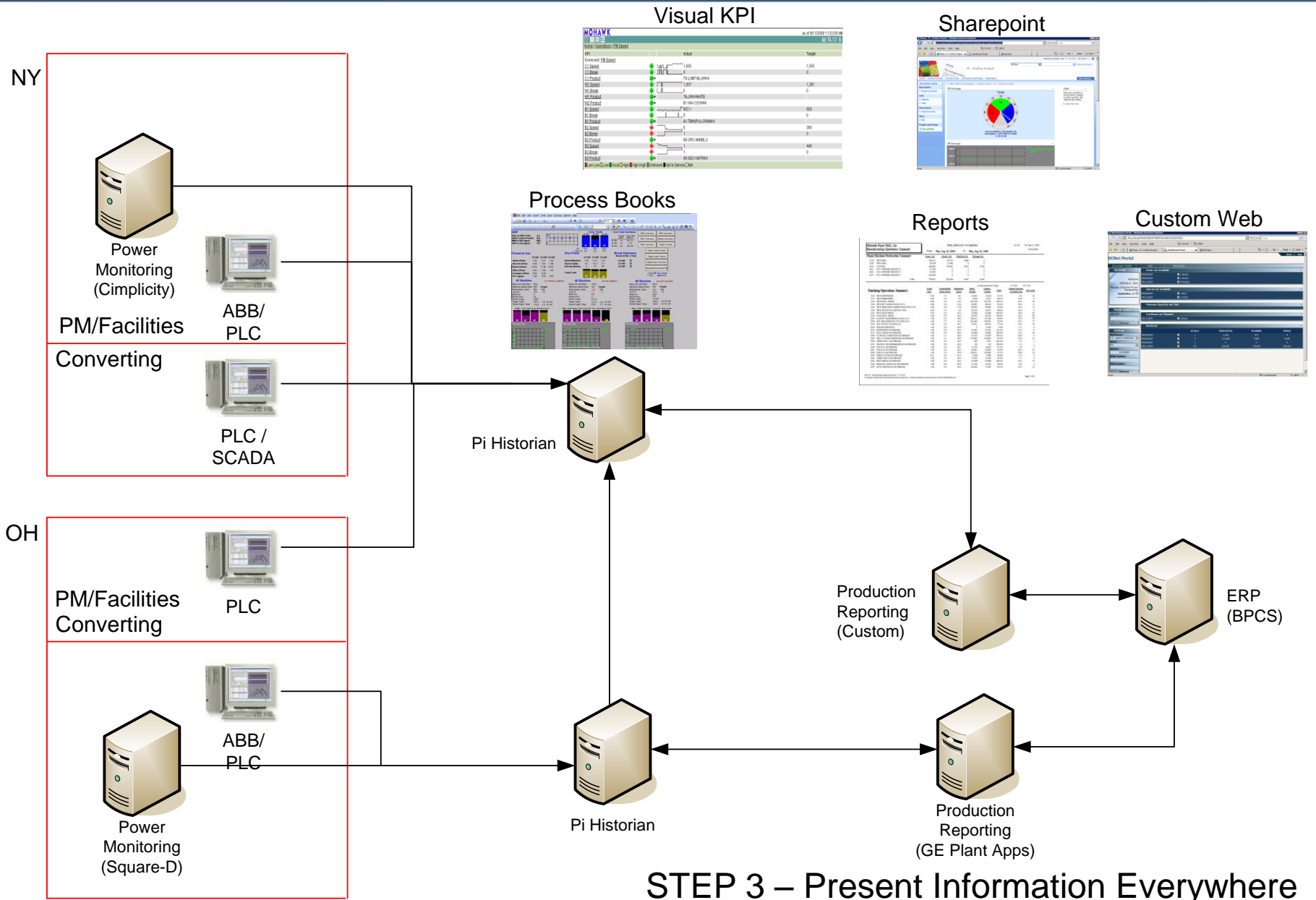
- Bielomatic 10.1

SHM-Laminator Process

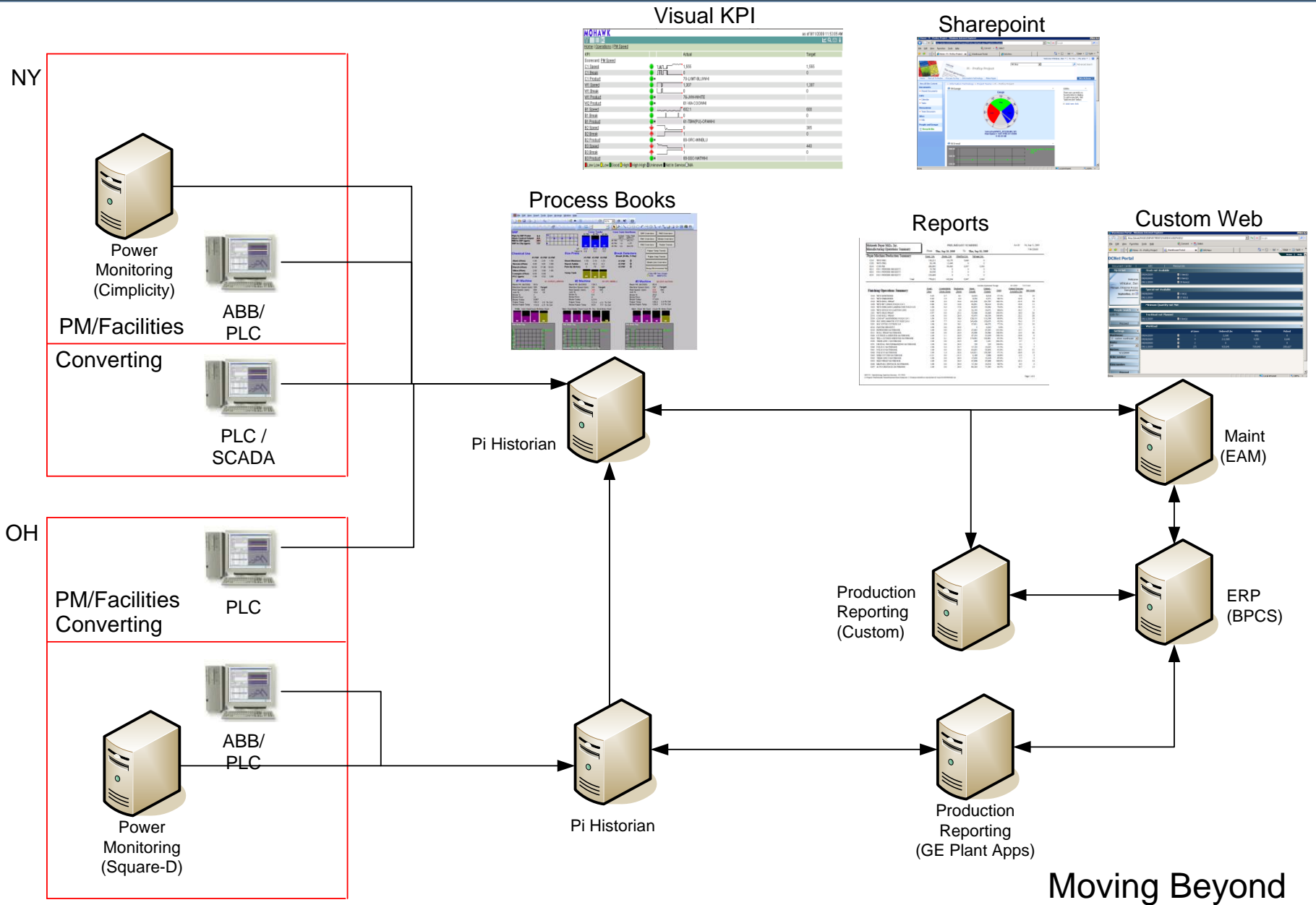
Done Local intranet 100%

# Visual KPI





## STEP 3 – Present Information Everywhere



# Moving Beyond

# Moving Beyond

Integrate energy consumption and asset management

When you recognize that the largest expense of any asset is energy consumption, then you will change your maintenance behaviors to improve energy consumption

Keys:

- Pi and Infor's Enterprise Asset Management - Enterprise Sustainability Edition

# Questions?