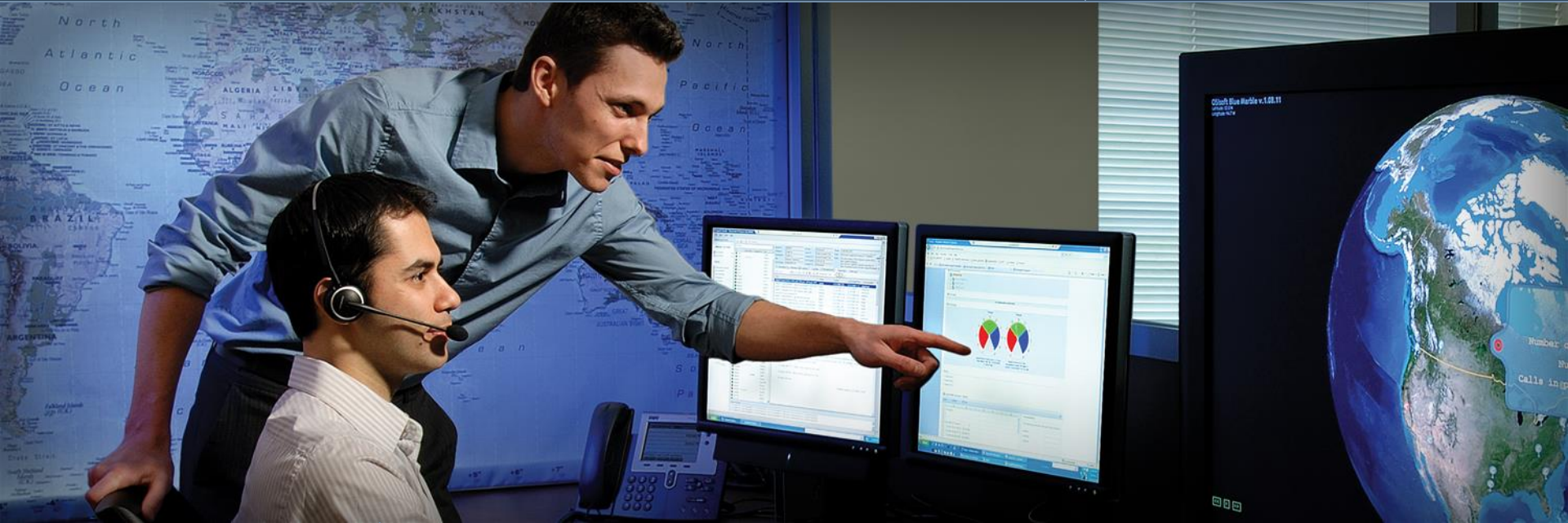




OSIsoft®

Regional Seminar Series



Data Infrastructure for Corporate Sustainability

Jerry Williams, Program Manager, Environmental Management, SAS
Alexis G. Stobbe, Account Manager, OSIsoft

Empowering Business in Real Time.

© Copyright 2009, OSIsoft Inc. All rights Reserved.



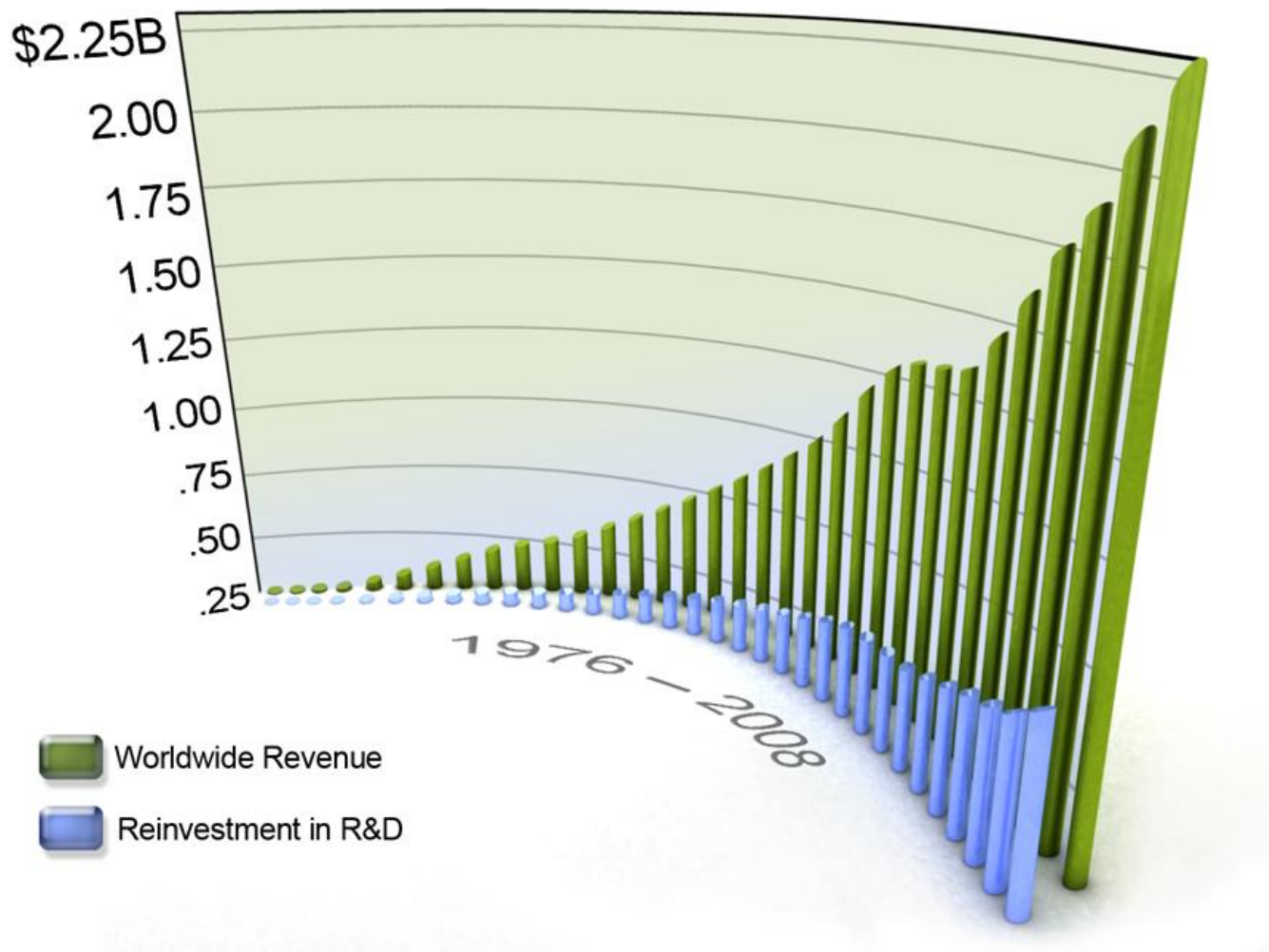
**THE
POWER
TO KNOW.®**

Data Infrastructure for Corporate Sustainability

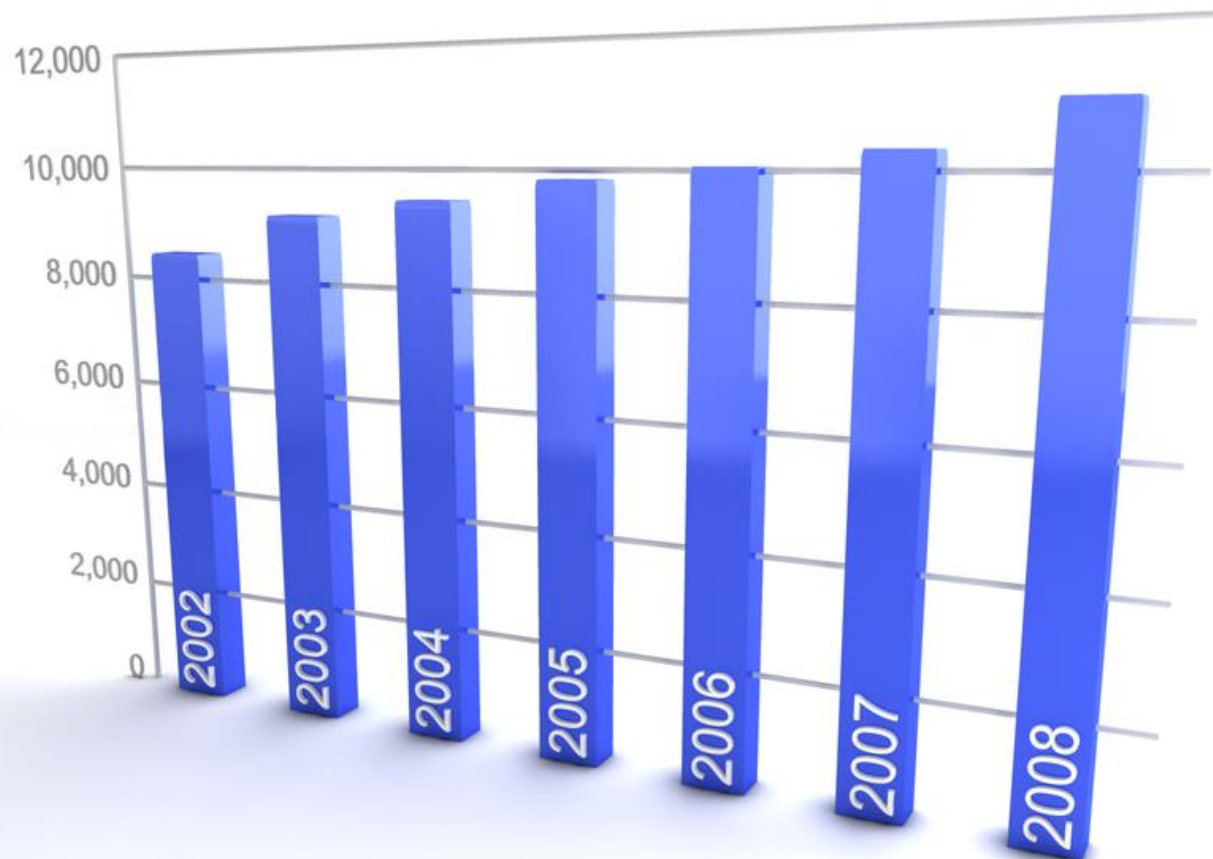
**Jerry Williams, Program Manager,
Environmental Sustainability, SAS**

2008 Performance

\$2.26 Billion in Total Revenue



11,019 Employees Worldwide





Sustainability Goals

- Better access to sustainability data
- Better identify costs of action or inaction
- Reduce energy consumption & costs
- Reduce greenhouse gas (GHG) emissions
- Enable global office comparisons
- Raise employee awareness
- Impact SAS' bottom line



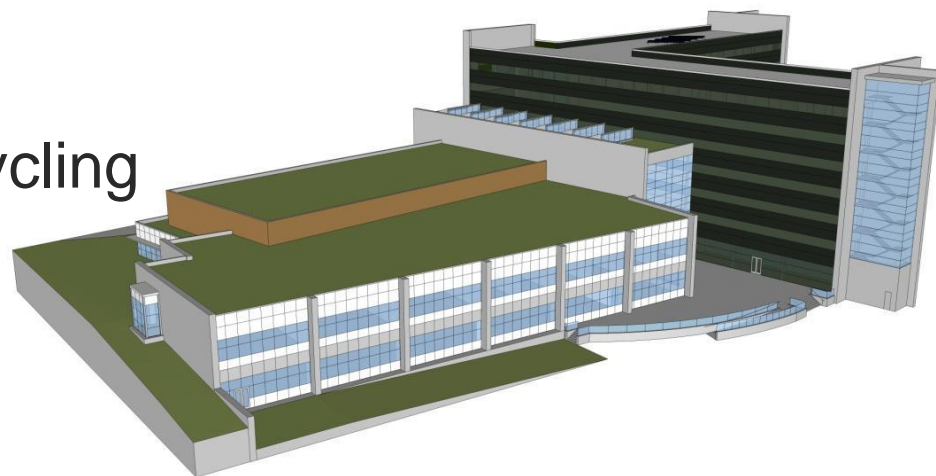
Business Analytics

A range of capability



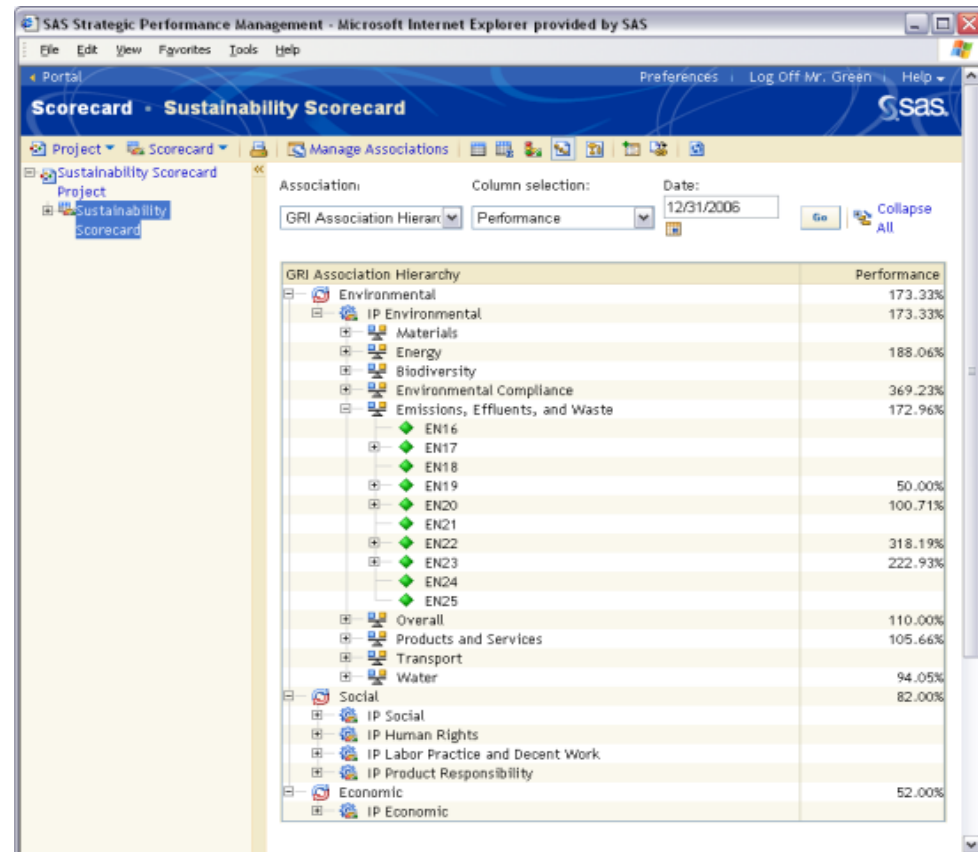
Green Data Aggregation

- Solar projects
- LEED buildings
- Building Automation Systems
- Regenerative drive elevators
- Global high-profile projects
- Data Center PUE
- Waste management & recycling
- Carbon modeling

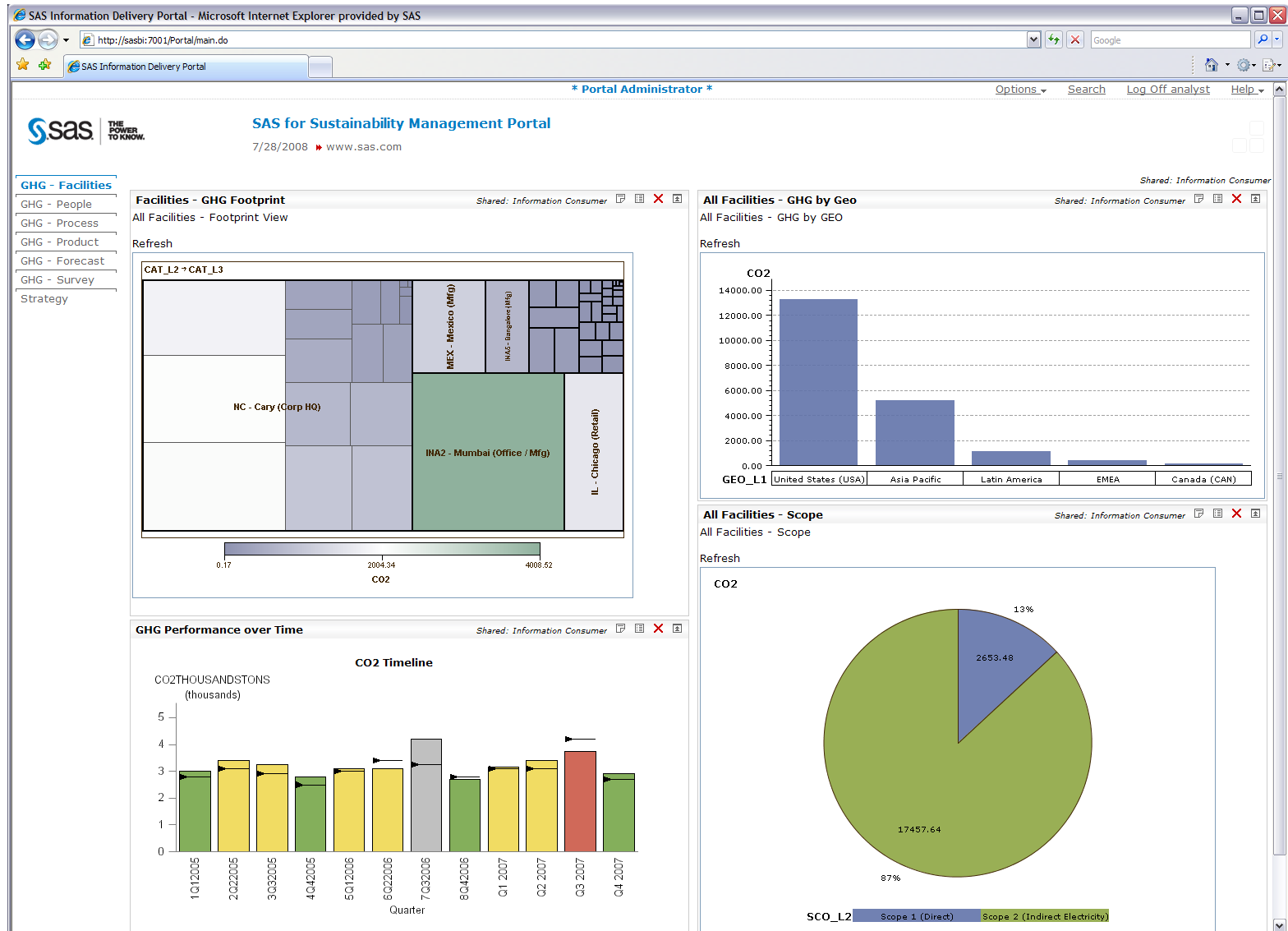


Measuring Mitigation Initiatives

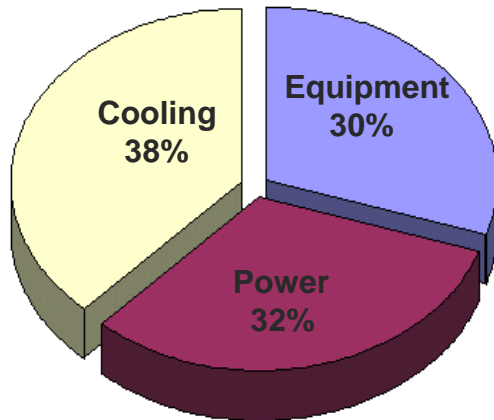
- Data not collected at lowest level
- Concept technologies untested
- Investments not validated
- CO2 abatement
- Meaningful alerts



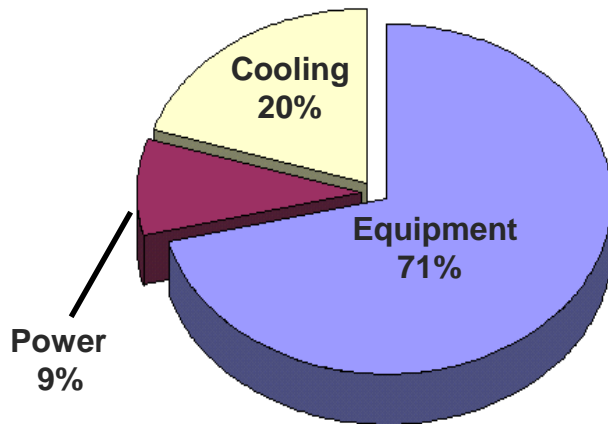
SAS for Sustainability Management



Green IT Metric—Power Utilization Efficiency



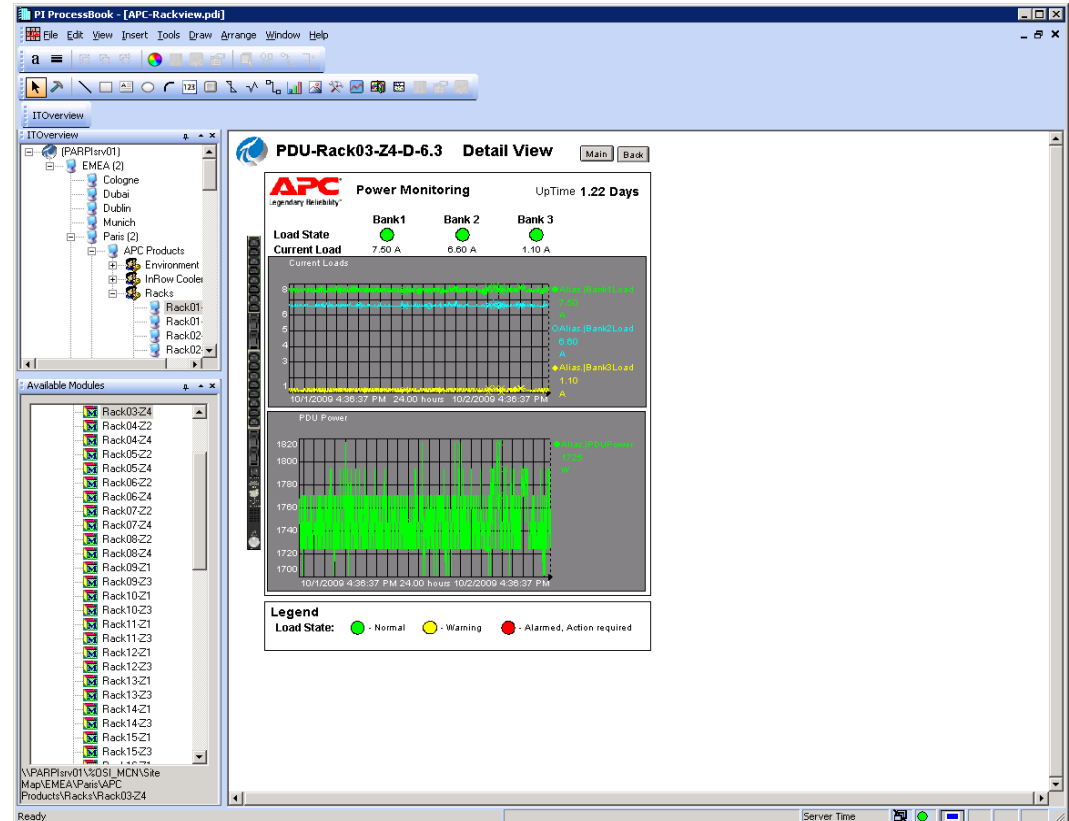
3.0 PUE - Typical



1.4 PUE Target

PUE =

$$\text{PUE} = \frac{\text{Total Facility Power}}{\text{IT Equipment Power}}$$



Eco Awareness Benefits

- Employee engagement
- Effective dashboards & reports
- Measure for attention
- PR exposure
- Collaborative analyses



Global Challenge





**THE
POWER
TO KNOW®**



Thank you

© Copyright 2009 OSIsoft, Inc.

777 Davis St., Suite 250 San Leandro, CA 94577