



# PI Server Security

Bryan S. Owen  
Omar A. Shafie

**Empowering Business in Real Time**  
**PI Infrastructure for the Enterprise**

# What is Security?

- se·cu·ri·ty

- Pronunciation: \si-kyūr-ə-tē\
  - Function: noun
  - Date: 15th century

1. The quality or state of being secure:

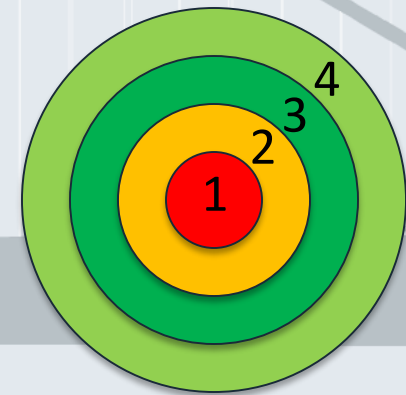
- a) freedom from danger : safety
- b) freedom from fear or anxiety
- c) freedom from the prospect of being laid off

Source: Webster's Online Dictionary

# PI Infrastructure Helps

- Information as a Survival Tool
  - Compete using a real-time data infrastructure
  - Collaborate across disparate systems
- Critical Infrastructure Protection
  - Defense in Depth for your systems

Zone	Network Depth	Software Depth
4	External	Network
3	Corporate	Operating System
2	Internal	Application
1	Critical	Data

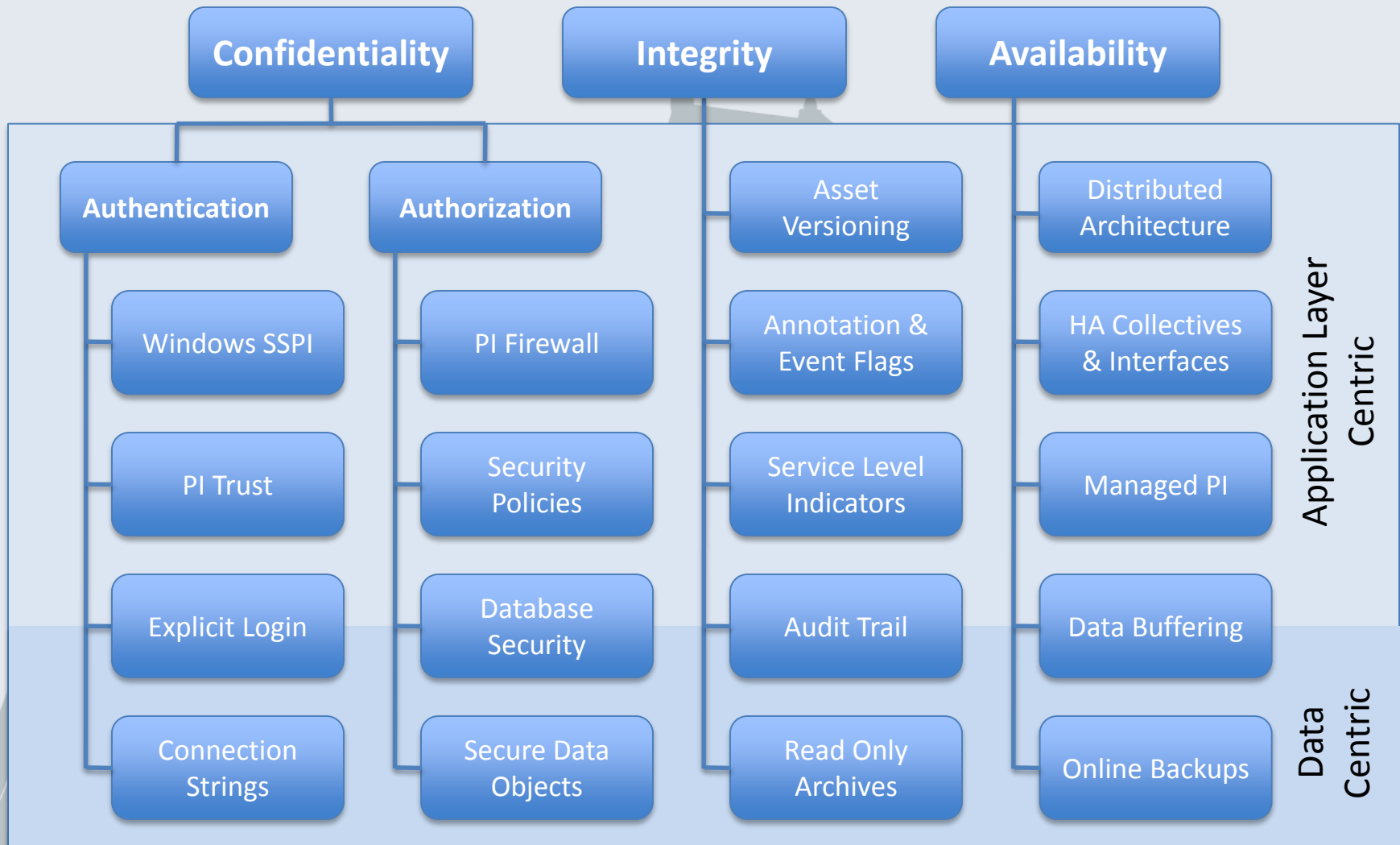


# What's New in PI Server?

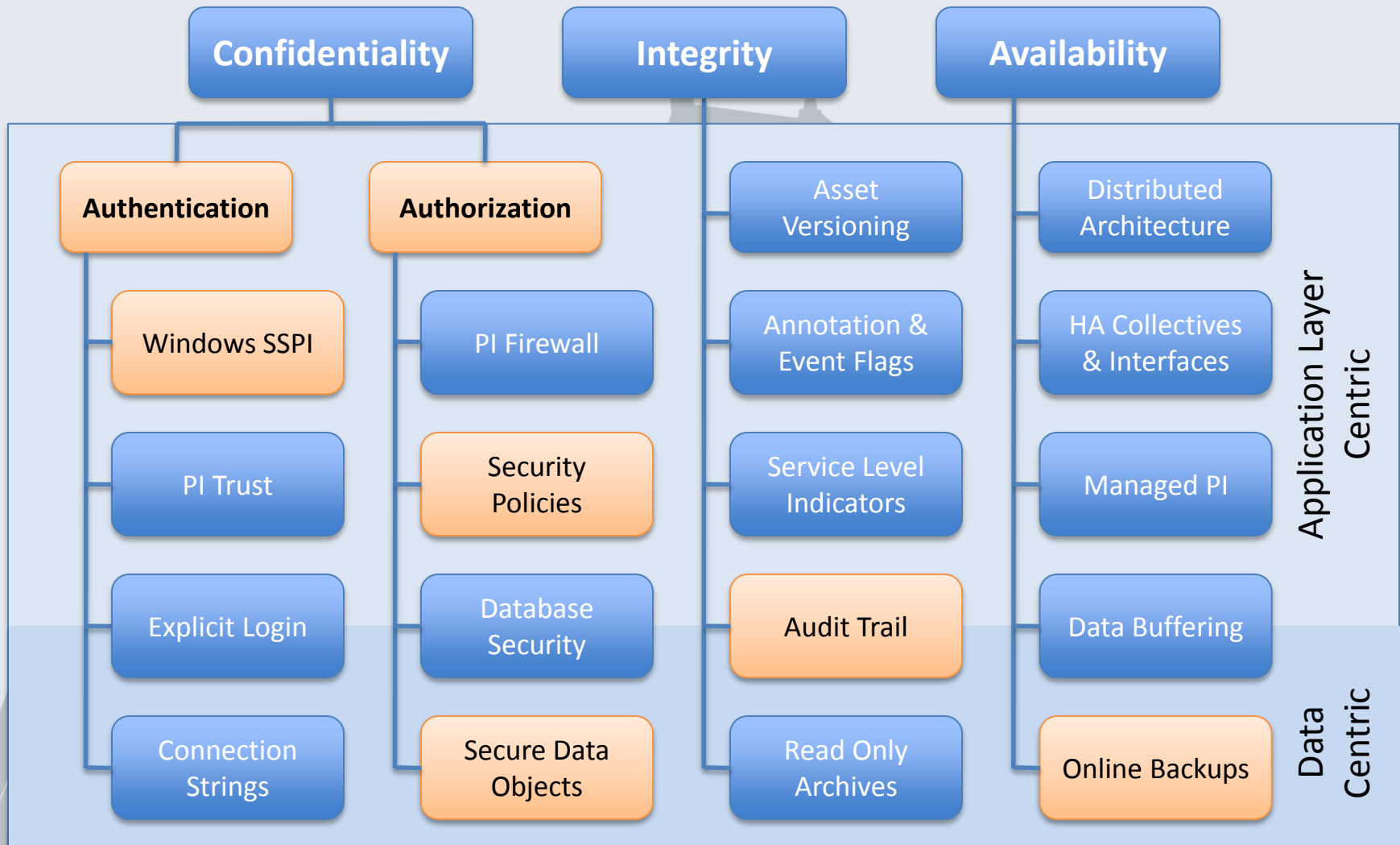
- Enhanced Security
  - Increased Control and Flexibility
- Less Maintenance
  - Security Features
  - Stability
- Better Manageability
  - System Management Tools (SMT)
  - Backward Compatible
- Lifecycle Support
  - 64bit and Windows 2008 (incl. Server Core)



# Security Feature Map

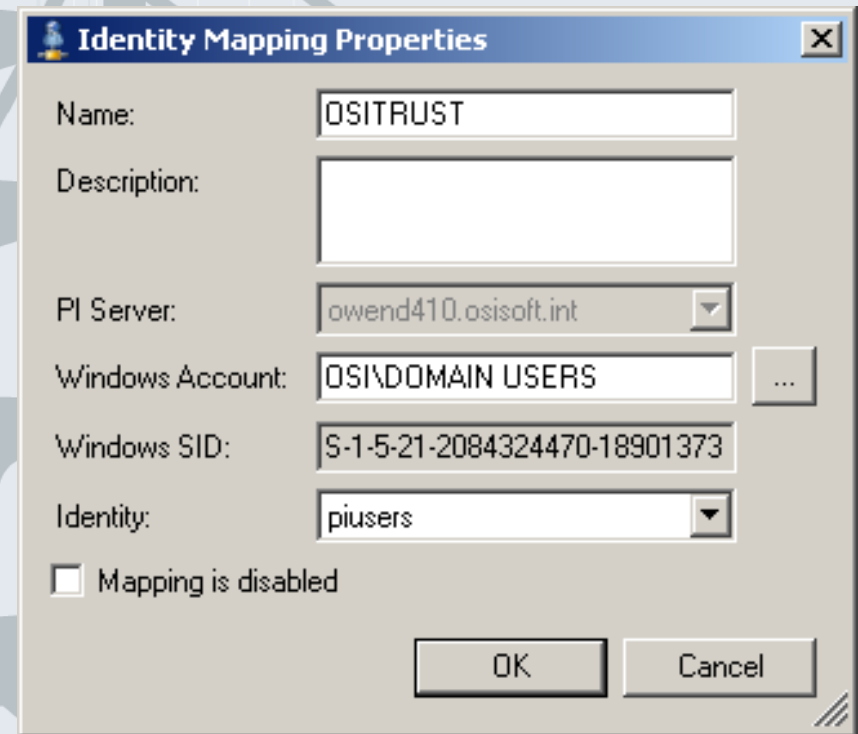
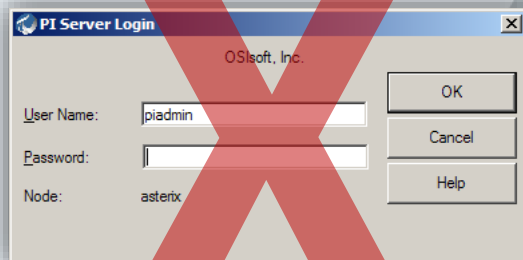


# Security Feature Topics



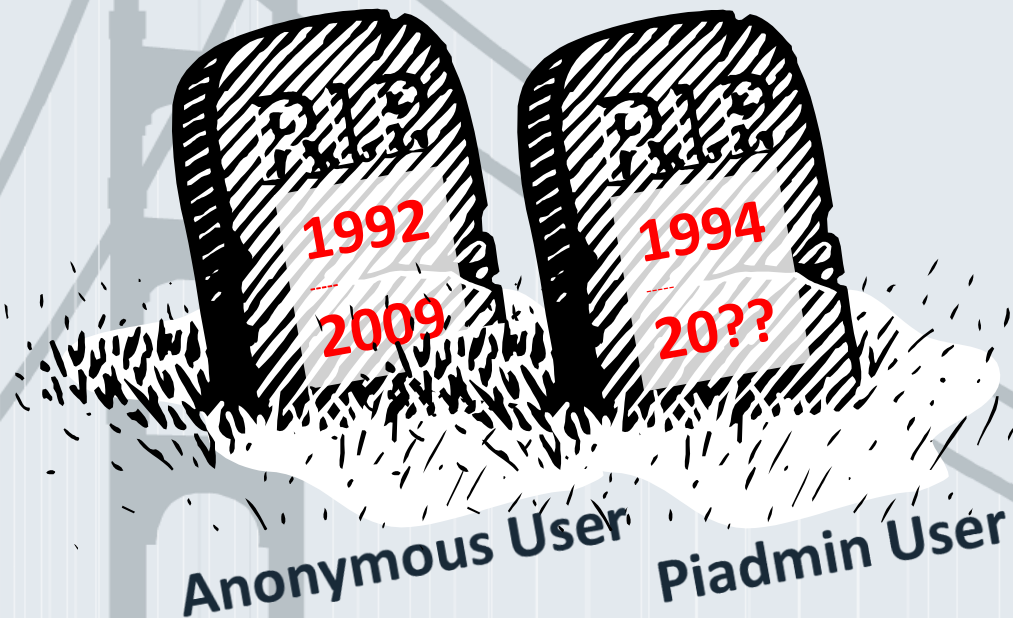
# Authentication

- Single Sign On – Windows Security (Kerberos)
  - One time mapping for Active Directory Groups
  - ...Just 5 mouse clicks



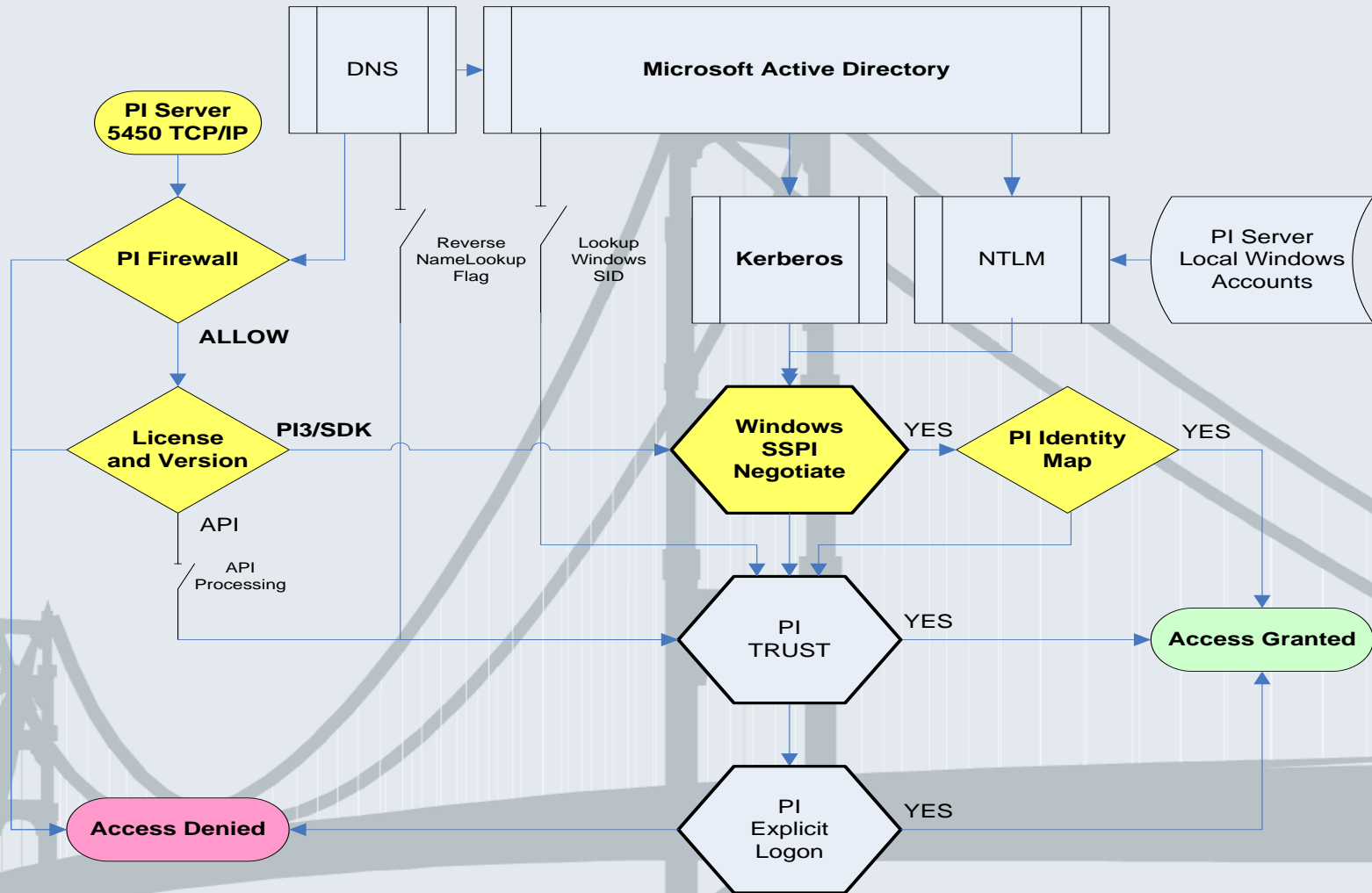
# Authentication Policy

- Policies to Allow and Prioritize Methods
  - Windows SSPI
  - PI Trust
  - Explicit Login
- Granular Scope
  - Server
  - Client
  - Each Identity





# Authentication Path



# Authentication Summary



- Most Secure if PI Server is a Domain Member
  - Not required
- Manage Users and Groups
  - Centrally in Windows
  - One time association in PI
- Explicit Login and Trust
  - You have control



# AUTHORIZATION

**[-10400] NO READ ACCESS - SECURE OBJECT**

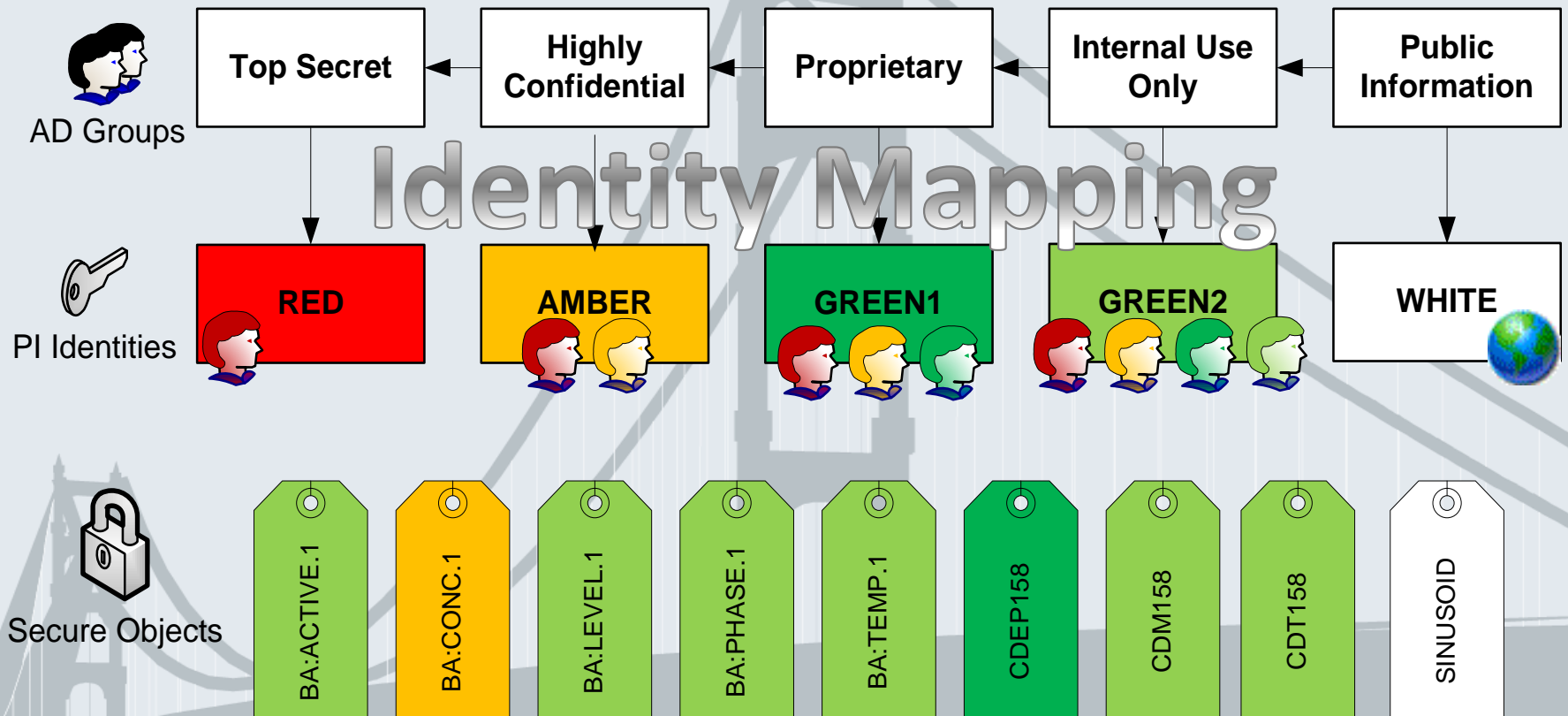
# Is Your Data Protected?

- Maybe...
  - Access is ALWAYS granted with piadmin
  - Factory setting allows world read access
- You MUST make changes!
- Default permission is configurable
  - Points: inherit from PIPOINT DBSecurity
  - Modules: inherit from parent



# Standard Data Protection Example

## ISO/IEC27000 mapped to G8 Traffic Light Protocol



# History of Authorization Settings

- PI 2
  - Security by Display
    - Set permission level for each user and application (0-255)
    - Rights divided into 3 sub ranges
  - Security by Client Node (Read, Write, Login Policy)
- PI 3
  - Security by Point
    - PtOwner, PtGroup, PtAccess
    - DataOwner, DataGroup, DataAccess

# In 2009...

How many configuration attributes per point?

# 2

- Access Control List (ACL) can be as long or short as needed

`Data;SECURITY;CCLCSWRPWPDTLOCRCSDRCWDWO;;;BA)(A;;CCLCSWRPWPDTLOCRRRC;;;SY)`

PtSecurity: Antarctica: A (r,w) | Americas: A (r) | Asia-Pacific: A (r) | Europe: A (r)



1 point

Point	Point Security	Data Security
SINUSOID	Asia-Pacific: A(r)   Antarctica: A(r,w)   Americas: A(r)   Europe: A(r)	Green: A(r)

Data Access

Identities:

- Green

Add...

Remove

Permissions for Green

Allow

Read	<input checked="" type="checkbox"/>
Write	<input type="checkbox"/>

Point Access

Identities:

- Asia-Pacific
- Antarctica
- Americas
- Europe

Add...

Remove

Permissions for Antarctica

Allow

Read	<input checked="" type="checkbox"/>
Write	<input checked="" type="checkbox"/>





# What else in 2009?

- PI Network Manager
  - Stability and hardened stack
  - Performance
  - Enhanced SMT plug-in
- Message Log Subsystem
  - Filter by severity
    - Critical, Error, Warning, Informational, Debug
- Audit Trail
  - Windows user preserved



# Also coming...

- Backup
  - Performs incremental backup
  - Checks integrity
  - Maintains “Last Known Good”
  - New SMT plug-in
    - On demand copy backup
    - Viewing backup history



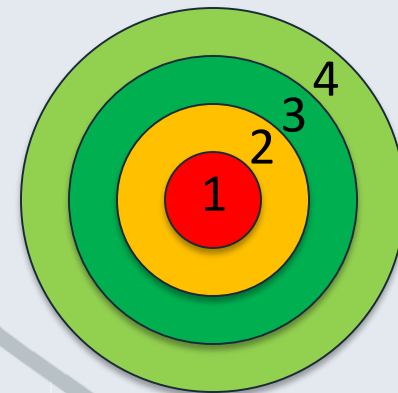
# Our Commitment to You

- Ongoing focus of Security Development Lifecycle
  - Help you with Best Practices
    - Reduce effort and improve usability
  - Eliminate Weakest Code
    - Cumulative QA effort with every release
  - Collaborate with Security Experts
    - Industry, Government, Academia, Customers



# Call To Action

- Protect our Critical Infrastructure
  - Use PI for Defense in Depth
  - We are all stakeholders
  - Patch management is important
    - Vulnerability in PI Network Manager (18175OSI8)
- See for yourself how security is easier than ever before
  - Come try SMT with the PI Server beta
  - Plan your upgrade today!



# Being Secure Is...

- More than regulations and features
  - Technology can help
- A state of mind, knowing
  - Your systems
  - What to do
  - Who you trust
  - OSIssoft wants to earn your trust

