



# OSIsoft's Business Package for SAP Enterprise Portal

Michael Sloves

**Empowering Business in Real Time**  
**PI Infrastructure for the Enterprise**

# Key Features and Benefits

- Comprehensive collection of iViews
- Rapid Development of Composite Applications
- No custom programming
- Pre-Configured or Ad Hoc Configuration and Analysis
- Fully-Documented Eventing Model
  - Integration with SAP Native, 3<sup>rd</sup> Party, and Custom iViews
- Built-in Integration with SAP Visual Composer
- Releases support multiple versions of the Enterprise Portal
- *The End Game: Display and Integrate Manufacturing and Business Data on the same workable dashboard!*

# The Value Proposition

- **How Kodak saved over \$20MM using the Business Package**
  - Made it *every users responsibility* to realize power consumption
  - Created a culture of Energy Efficiency
- **Implementation**
  - OSIsoft PI System
  - SAP Enterprise Portal
  - OSIsoft's Business Package for the SAP Enterprise Portal
  - Consolidation of utilities data
  - Bringing information to the desktop every day
- **Results**
  - Kodak was able to close an unneeded Power Plant
  - Saved over \$20+MM

# Kodak Example

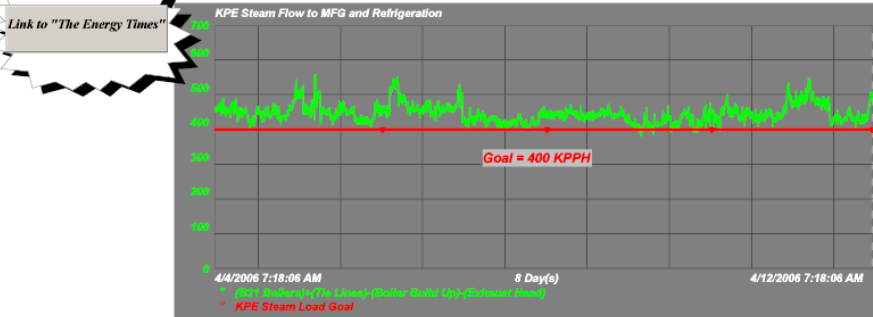
KODAK Workforce Portal

Welcome JAMES BREEZE

Welcome myHR **KP Energy**

**Utilities Home** | Utilities Generation | Building Usage | Ad-Hoc Trend

Steam Scorecard	Total KP Plant Steam Flow	1426 KPPH Goal < 1350	■
Electric Scorecard	KPE Steam Flow to MFG & Refrigeration	497 KPPH Goal < 400	■
Chilled Water Scorecard	KPW,X&M Steam Flow to MFG & Refrigeration	377 KPPH	■
Kodak Water Scorecard	KPS Steam Flow	79 KPPH	■
Kodak Water Scorecard	Exhaust Steam to Atmosphere	127 KPPH	■
Compressed Air Scorecard	Total Boiler Build-Up	353 KPPH	■
	260# Steam - Tie Line Flow from B-321 to B-31	57 KPPH	■
	Total Megawatts	98 Megawatts Goal < 95	■
	Purchased Power	14.0 MWATTS	■



- KPW Chilled Water Total Tons
- KPM Chilled Water Total Tons
- KPS Chilled Water Total Tons
- 9 Degree System Tons
- -95 System Tons
- ▣ Waste Water Treatment
  - Waste Water Flow
  - Waste Water Electric Usage
  - Hydro Generator Output

Welcome JAMES BREEZE

ation | Building Usage | Ad-Hoc Trend

Start Time: ^-14d

End Time: ^

Apply

## Kodak Park Power

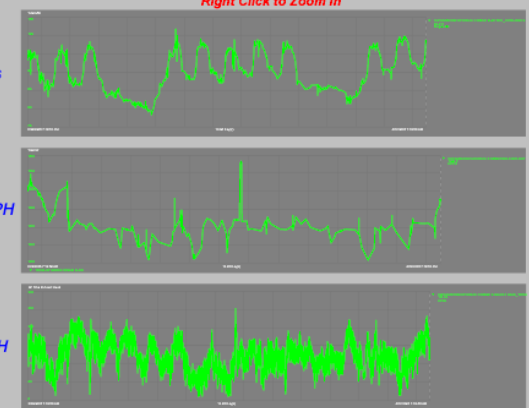
Total MW 98.4 Megawatts

Total Steam Flow 1,426 KPPH

Exhaust Head Steam Flow 132 KPPH

### Steam Flows KPPH

Package Boilers	Boiler 13	Boiler 14	Boiler 15	Boiler 41	Boiler 42	Boiler 43	Boiler 44
0	116.0	103.1	410.8	400.9	402.5	0.0	0.0



# List of iViews

- RtActiveView
- RtAnnotation
- RtBatch
- RtDataSearch
- RtGauge
- RtGraphic
- RtKPI
- RtForm
- RtTable
- RtTableTemplate
- RtTicker
- RtTimeRange
- RtTimeSeries
- RtTreeView
- RtTrend
- RtValue
- RtXYPlot
- RLINK-PM
- RLINK-PPPI

# What is a Composite Application?

- An Application built by *analysts* by piecing together...
  - Sources of disparate data
  - UI Building Blocks (e.g., Forms, Charts, Flow, etc.)
  - Visually defining data relationships
  - Deploying to the Enterprise
- **All** of OSIsoft's iViews **natively** interface with SAP's Composite Application environment
  - Data In
  - Data Out

# Releases

- Business Package 70.1.0 released 12/08
  - Compatible with SAP CE 7.1
  - Enhancement: Improved Eventing
  - Enhancement: Custom Color Selection
  - New Feature: RtBatch iView
  - New Feature: Data Search from Personalization
  - New Feature: Tab-based Tables
  - New Feature: Export to Excel
  - New Feature: Printing
- Business Package 70.1.1 to be released 2Q09
  - Compatible with SAP CE 7.1 Enhancement Package 1

# Questions

- Questions...
- For a demonstration of Composite Applications and the Business Package, see us at the Product Expo!