



Engineering Review

Richard Beeson

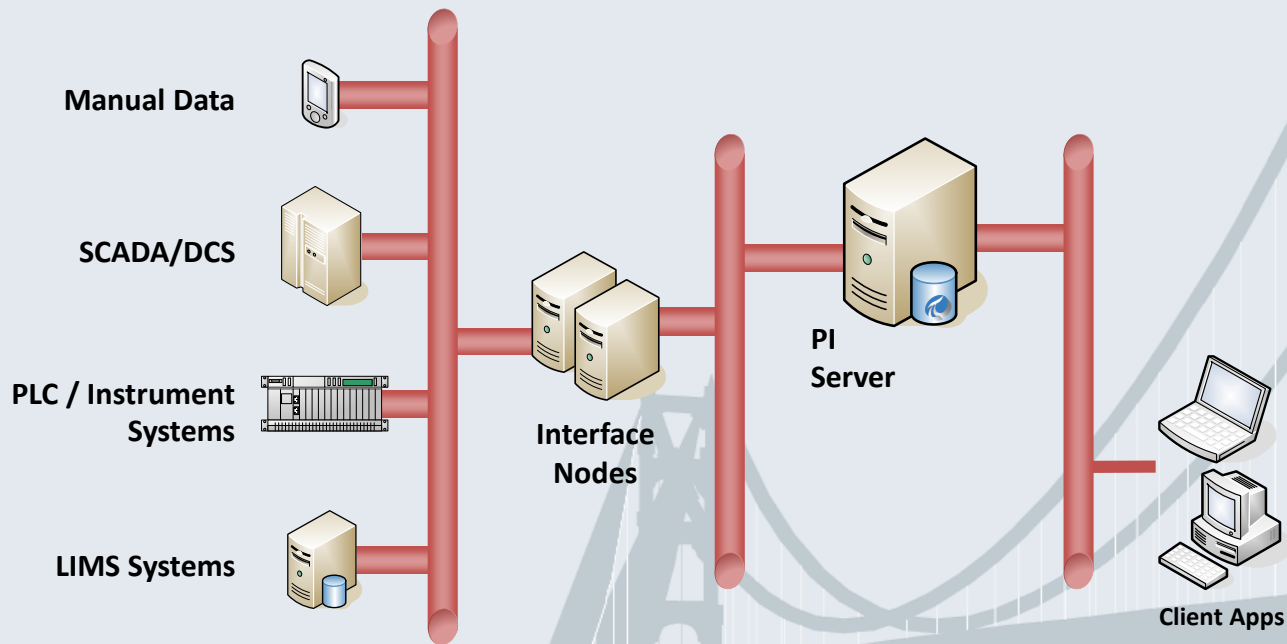
Ray Hall

Brian Bostwick

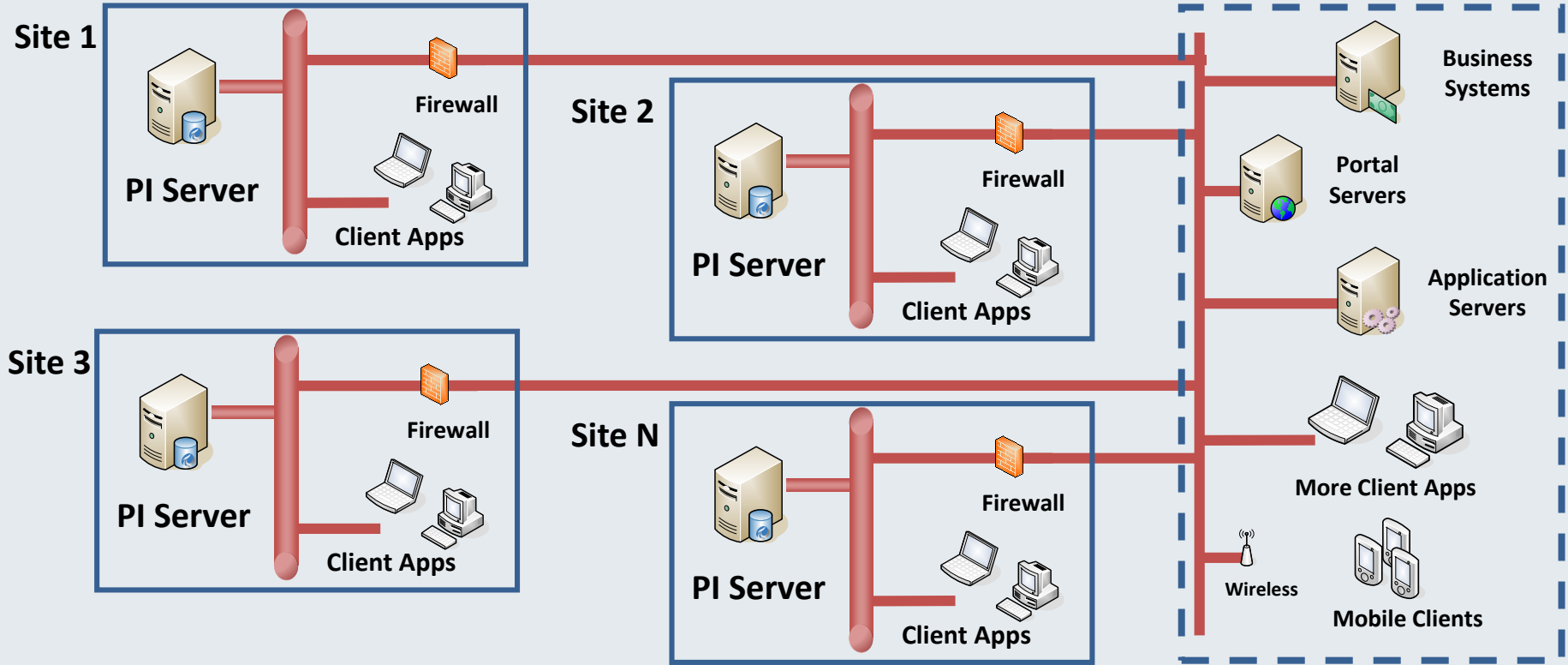
Ray Verhoeff

Empowering Business in Real Time
PI Infrastructure for the Enterprise

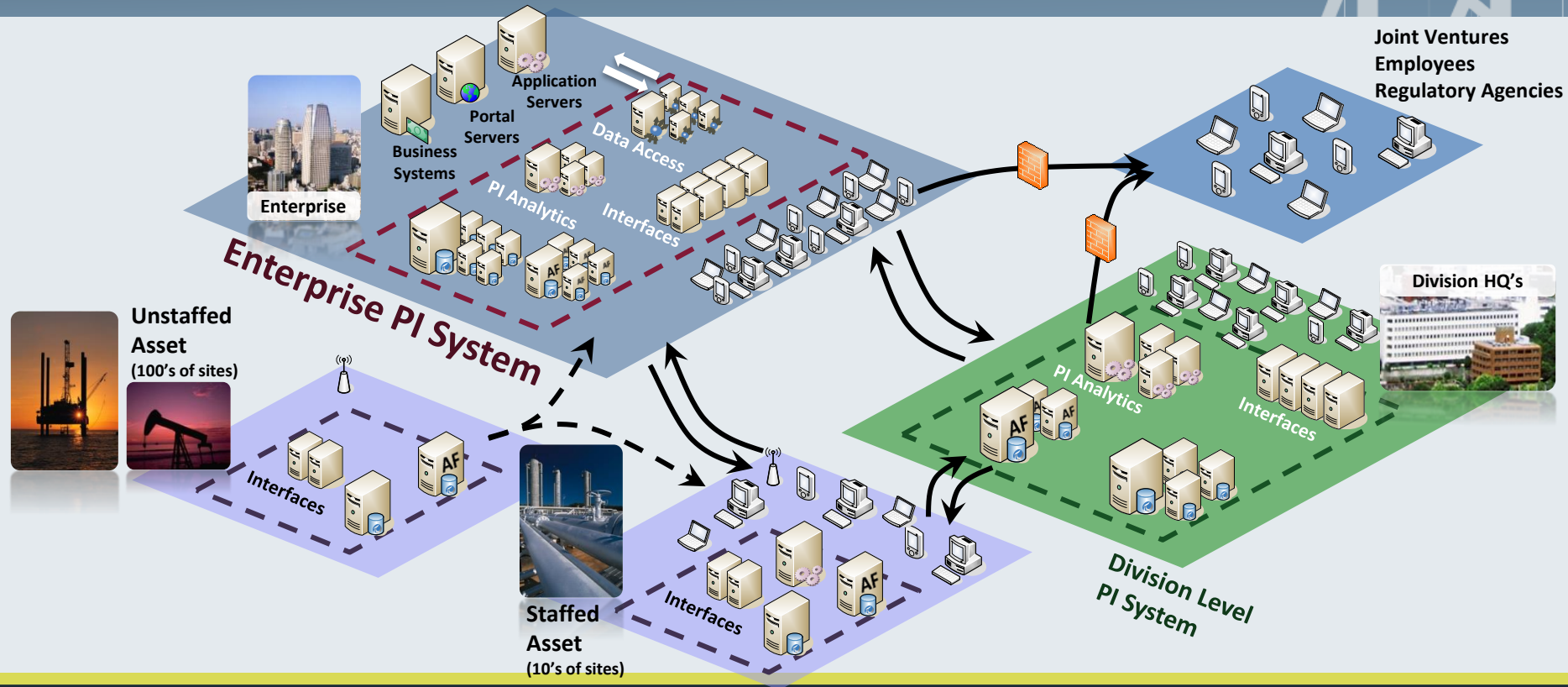
Traditional PI Deployment



Interconnected Sites



Enterprise Deployment

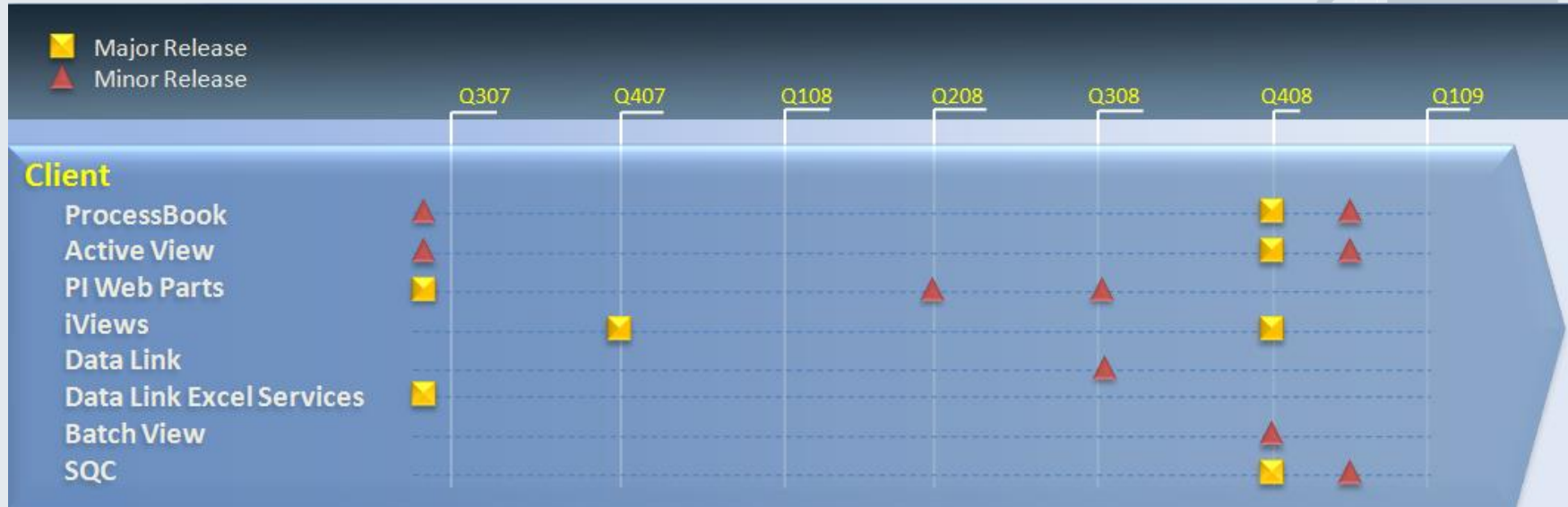


2009 Value Themes

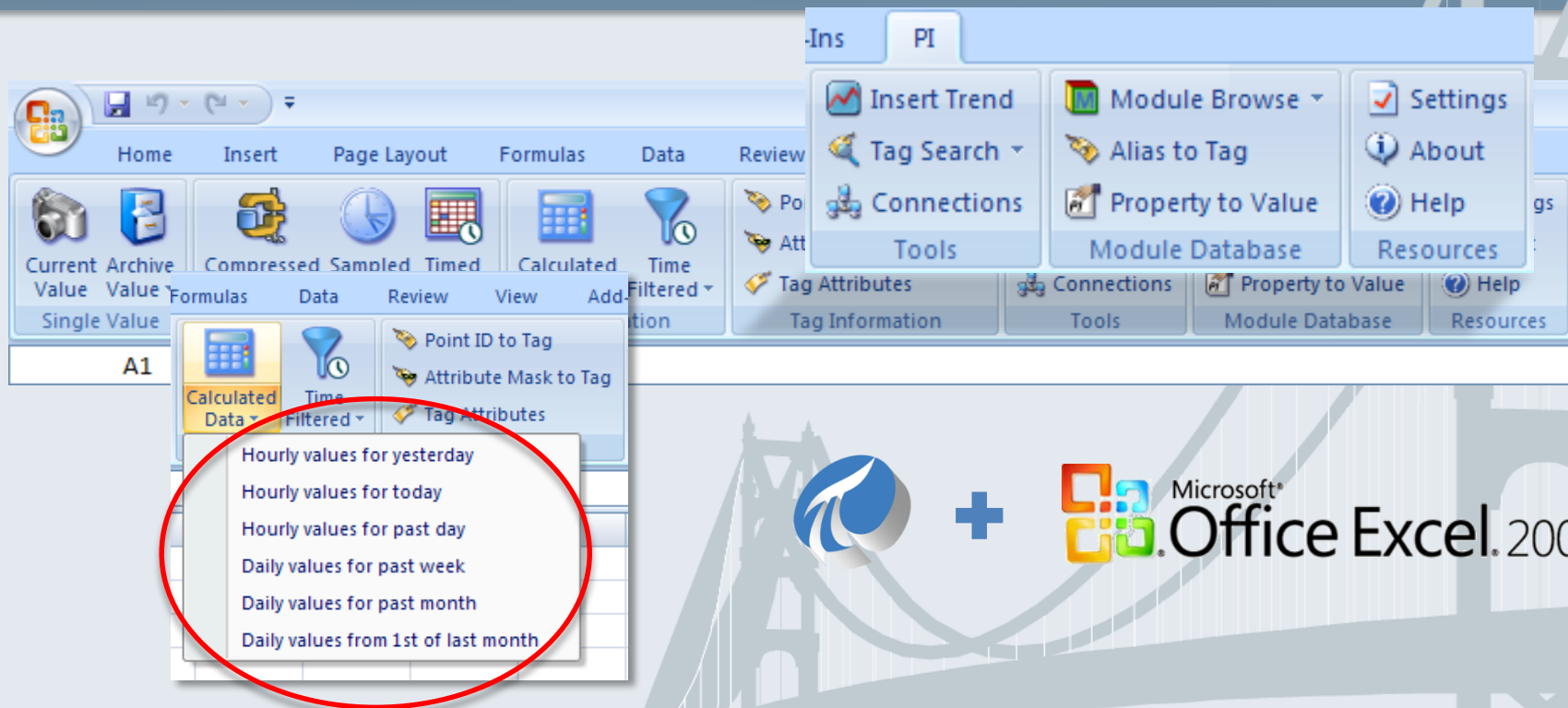
- Security
- 64-bit servers
- Asset Centric PI
- Internationalization
- System scaling



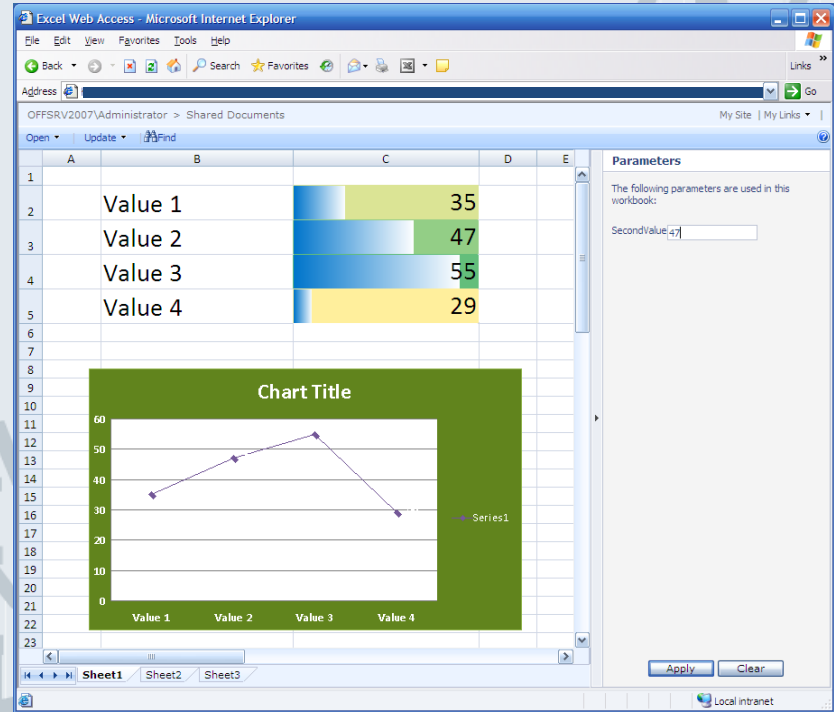
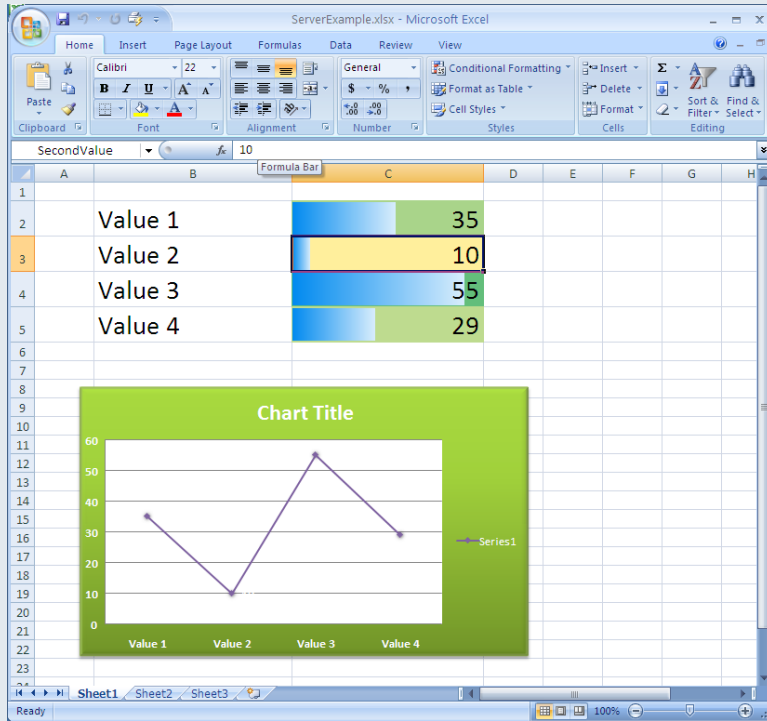
Client: Accomplishments



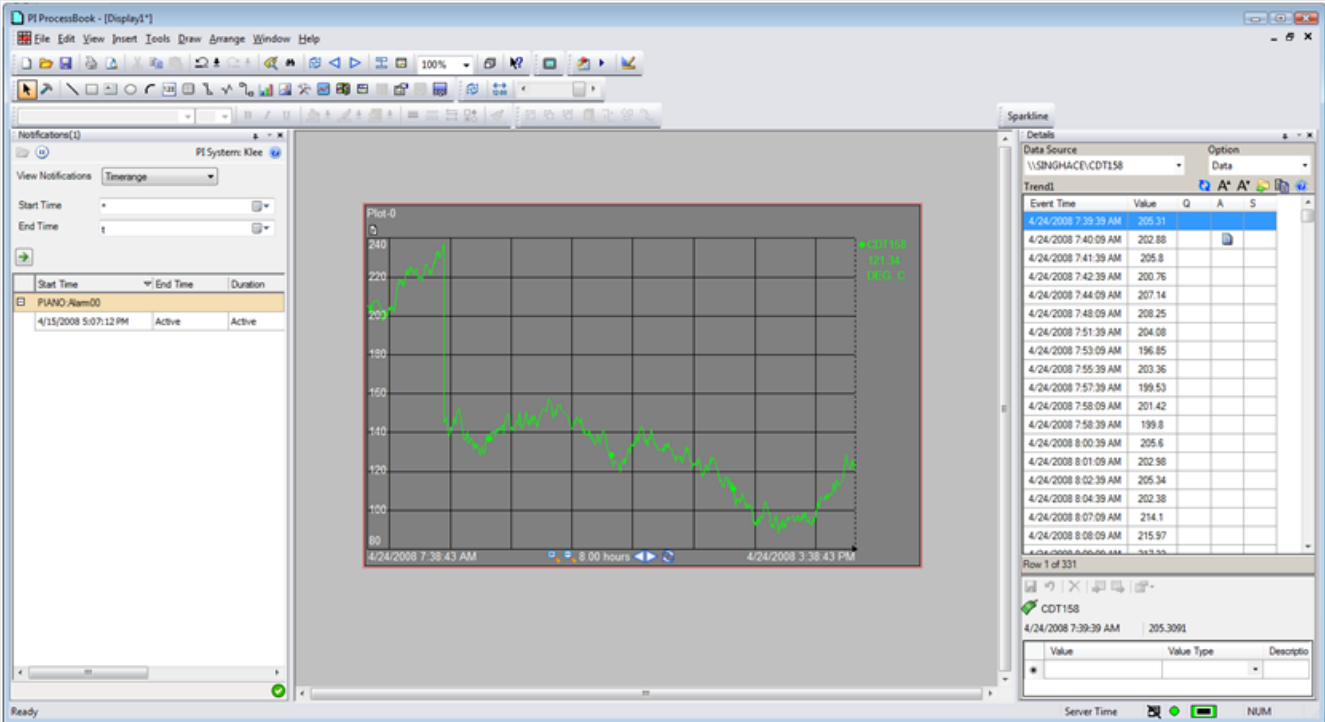
DataLink 4.0



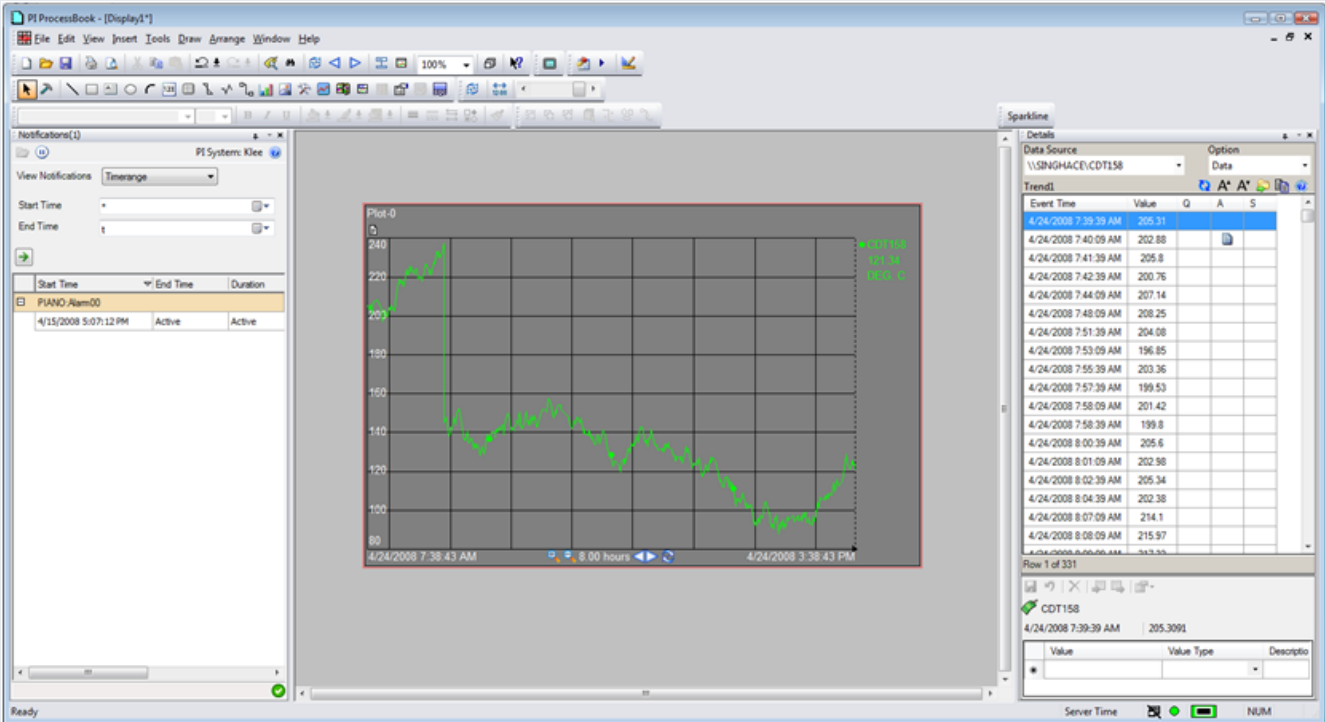
DataLink 4.0 for Excel Services

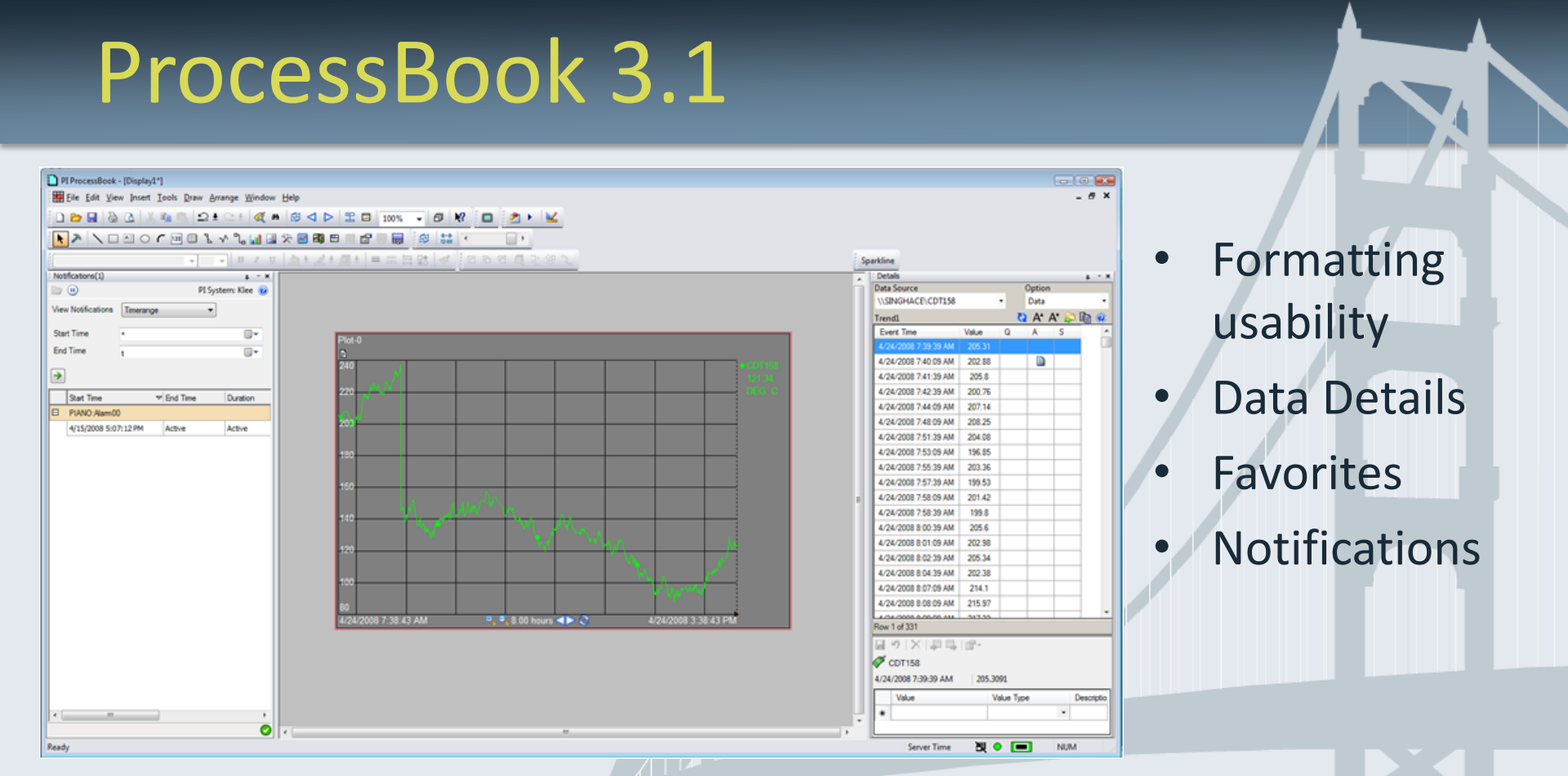


ProcessBook 3.1



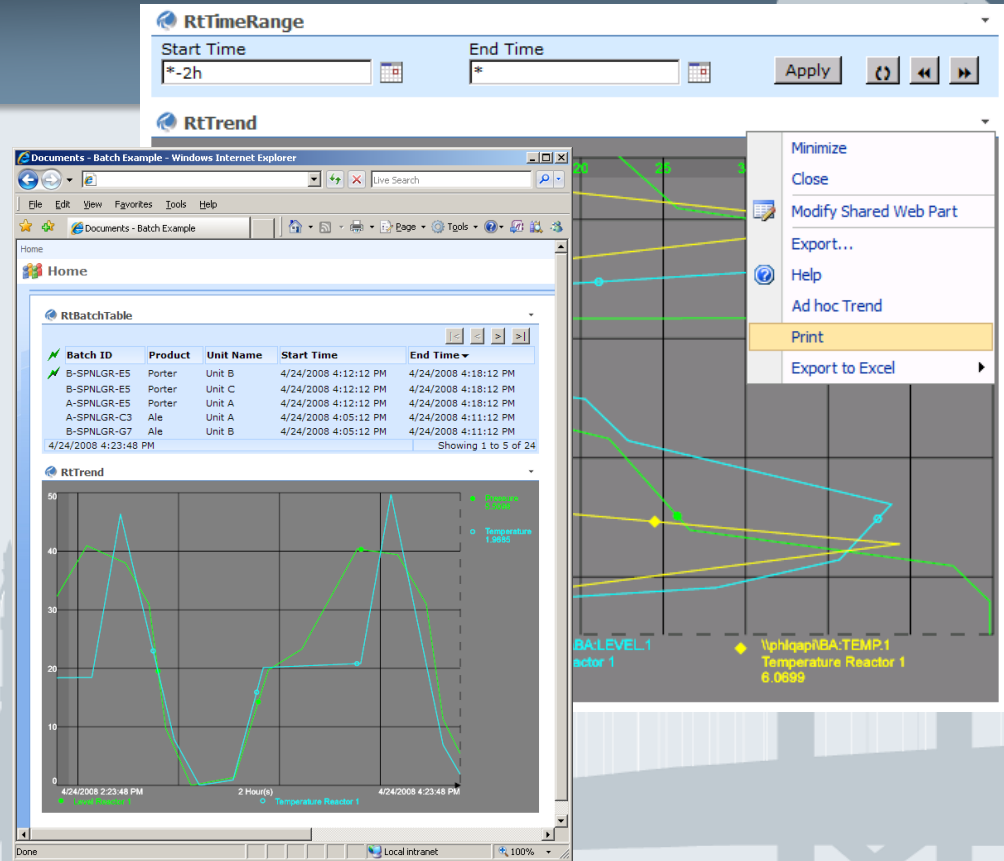
- Formatting usability
- Data Details
- Favorites
- Notifications

- # ProcessBook 3.1
- 
- Formatting usability
 - Data Details
 - Favorites
 - Notifications



RtWebParts 2.x

- RtBatchTable
- Printing enhancements
- PI Notifications Integration
- Usability improvements
- Multiple condition column formats for tables
- Localization Support
- Forms based authentication
- Support for reverse proxy servers, ISA server.



Data Access: Accomplishments



- PI SDK
 - Windows Authentication
 - Performance, scaling improvements
- OPC COM Server
 - Certified by OPC Foundation
 - Nominated as OPC reference standard
- PI OLE DB
 - Performance, scaling improvements
 - Enhanced for BizTalk, BDC

Virtual Campus

- OSIssoft Developer Community
- New Software+Services (S+S) offering from OSIssoft
- One- or multi-year subscription
- Community-oriented and resource-rich website and services
- Provide everything necessary to build applications on top of PI, with focus on 'doing it right' (guidance, learning, etc.)
 - PI software for development (PI Application Toolkit)
 - Architectural guidance
 - Support/Collaboration in various ways

Servers: Accomplishments



- PI Server
 - 3 Patch Releases
 - Security Threat Patch
- ACE
 - Visual Studio 2008
- PI Notifications
 - Major Release 1.0
- PI SMT
 - 2 Major Releases
- AF
 - Major Release 2.0

Interfaces: Accomplishments



- Phase II failover being widely implemented
 - OPC DA, PITOPI, RDBMS, OPC HDA, OPC A&E
- New Batch Framework
 - Emerson DeltaV Batch, Rockwell FactoryTalk Batch, Emerson DeltaV Compliance Suite (Syncade)
- New Product development
 - BACnet Interface , DSS Plant Monitoring System Interface, DeltaV Smart Connector, GE XA/21 APS Connector
- Version 3.8.1.0 PITOPI released
- PI SDK 1.3.6.364 (disconnected startup fix plus other issues which affected interfaces)
- 119 Separate Interface Releases since Monterey Users Conference

Interfaces

OSIsoft Product Roadmap

- Major Release
- Service Release

Jan Feb Mar Apr May Jun Q3 '09 Q4 '09 H1 '10 H2 '10

General Interfaces

PI to PI
AutoPointSync
PI UFL
RDBMS
WITSML
IT Monitor
Power Meter

OPC Interfaces

PI OPC UA Interface
PI OPC Interface
PI OPC Alarms & Events

Batch Interfaces

ABB 800xA
Emerson CompSuite
Siemens Simatic PCS7

OSIsoft Product Roadmap

- Major Release
- Service Release

Jan Feb Mar Apr May Jun Q3 '09 Q4 '09 H1 '10 H2 '10

Vendor Specific Interfaces

ABB Bailey SemAPI
ABB Ulma 2000 NT
Areva (ESCA) HabConnect
C37.118
Cal ISO Dispatch
Cybertec
DNP3
DS&S SAIC PMS/Win
GE Cimplicity
GSE TrendR
Hartman & Braun ConlinkX
Honeywell PHD
Intellution iFIX
IPMI
L&W Autoline 300
Modbus
Siemens Power TG
Yokogawa FAST/Tools

- 425+ interfaces
- 14 developers
- 3 QA engineers

- 6 Locations
- 150 man-years of OSIsoft experience

Interfaces: Ongoing



- Interfaces on Windows Vista and Windows 2008 Server
- Release of 64 bit MCN Health Monitor Interfaces
- Uniint failover supporting a direct socket connection
- First LINUX based interface – Siemens Power TG Interface
- OPC DA
 - Three new plug-ins
 - Vista and 2008 Server support
 - Performance improvements
- N-way buffering of batch data
- GUI for UFL Interface
- Server level failover for RDBMS Interface

Interfaces: Ongoing



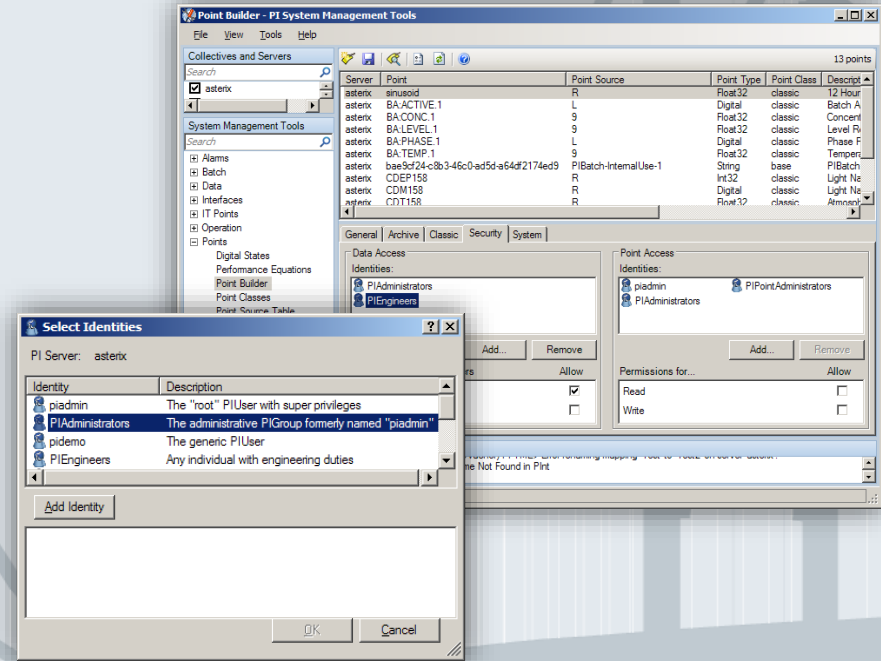
- Development of next generation interface framework
 - More scalable
 - Easier management
 - Supports point and structure creation
- Interfaces for Power Meters
 - Silver Springs
 - GridNet
 - Itron
 - Elster

Security

- PI System data may be useful to secure across traditional organizational boundaries of your company
- Companies have invested heavily in Active Directory implementations and configuration and want to leverage that with mission critical applications
- Allows PI to securely scale across the complete network infrastructure of a company to all their employees

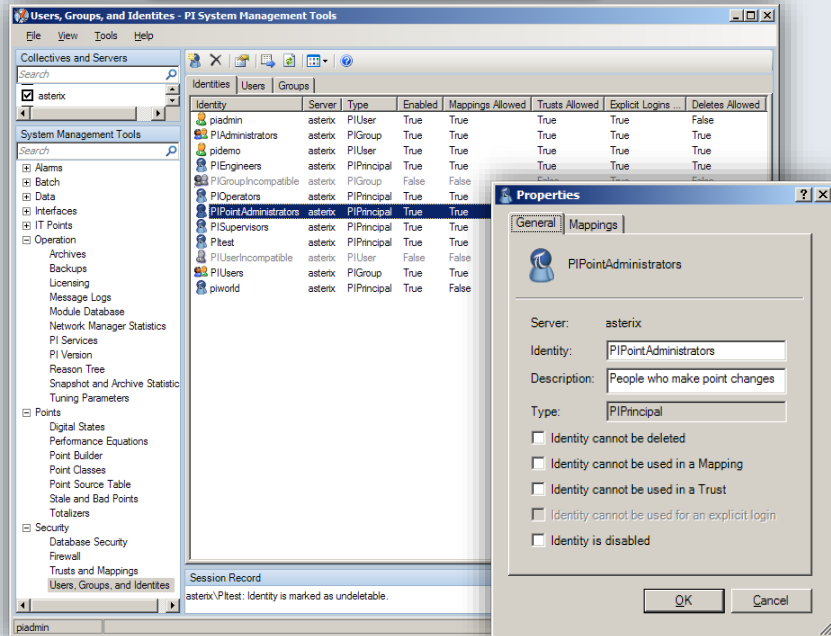
Security

- Windows Authentication
- Supports Active Directory as well as Local Groups and Users
 - Windows Principals
 - Groups
 - Flexible ACLS
- Single Sign-On Eliminates need for PI Server Log On

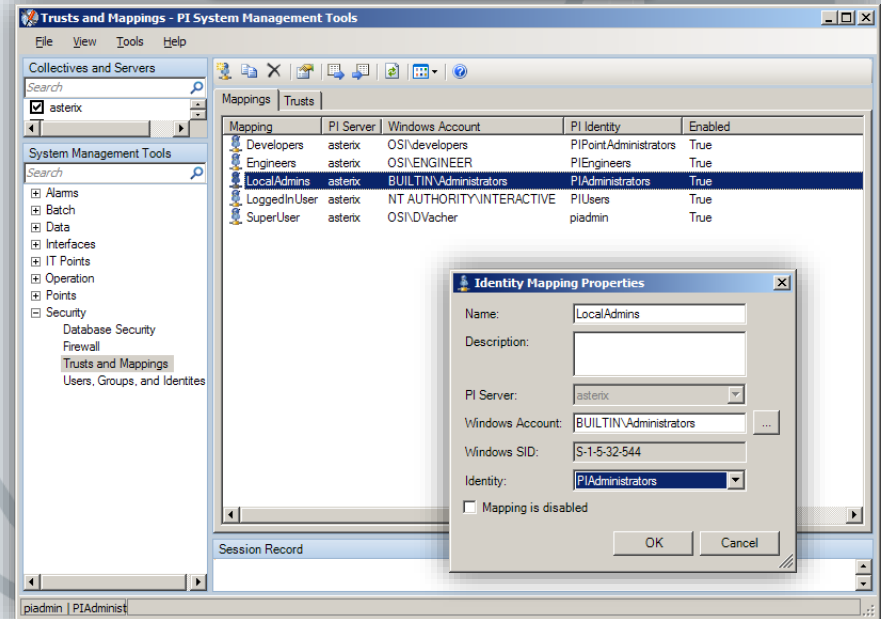


Security Configuration

PI Identity Management



Windows/AD Mappings



Security – Platform Solution



- System Wide Testing of PI Server 380
 - Coordinated, comprehensive platform test effort
 - Interfaces
 - Client Applications
 - Various domain and workgroup configurations
 - Testing at customer sites
 - Regression tests
- Security Threats
 - Committed to professional, collaborative approach in cyber security response
 - Dedicated Cyber Security Manager
 - Q42008 Patch Releases
 - Issue found by independent testing
 - Issue was coordinated through government CERT organizations
 - Effective response from the PI3 team

Go See: Security Theatre Talk

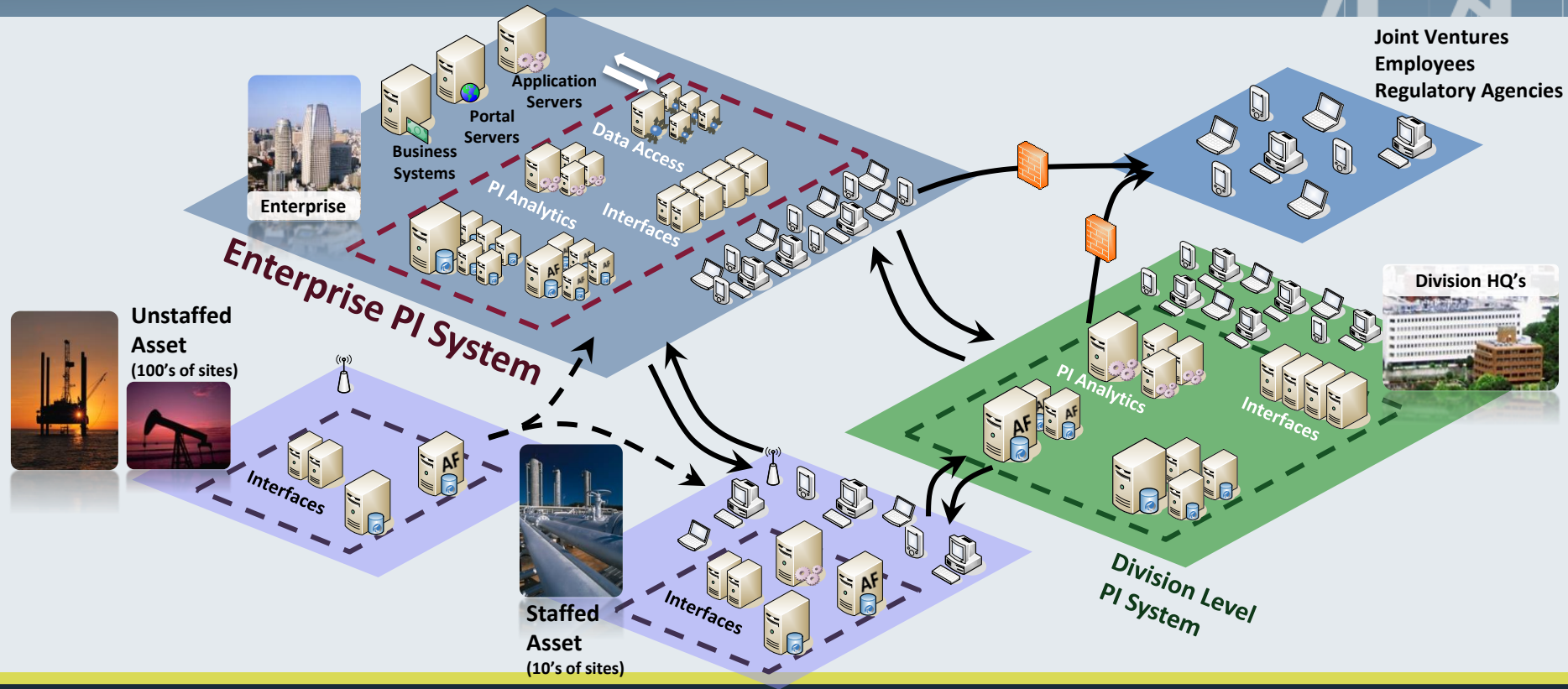
64 bit Support

- Most server hardware today is 64 bits
- Allows full utilization of hardware
- Scaling is mostly an issue on OS/soft servers and customer applications
- Our servers and our programmatic interfaces require 64 bit
 - Programmatic interfaces are used by servers
- Some interfaces will support 64 bits

64 bit Support



Asset Centric PI

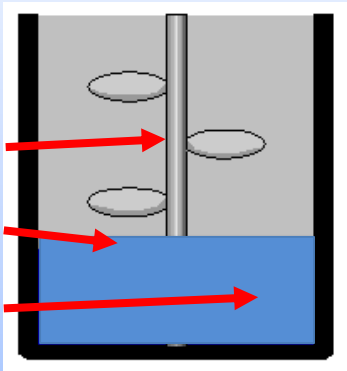


Units and PI Tags

U34:Temp.1

U34:Level.1

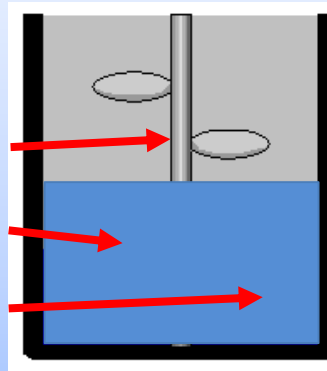
U34:Conc.1



U35:Temp.1

U35:Level.1

U35:Conc.1



U36:Temp.1

U36:Level.1

U36:Conc.1



....

Units Abstracted

Unit 34

Unit 35

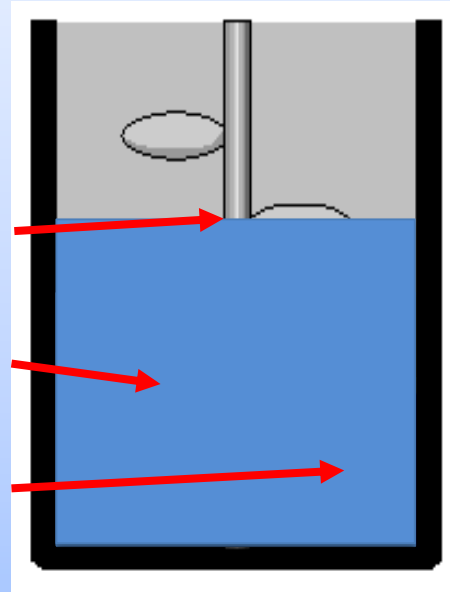
Unit 36

....

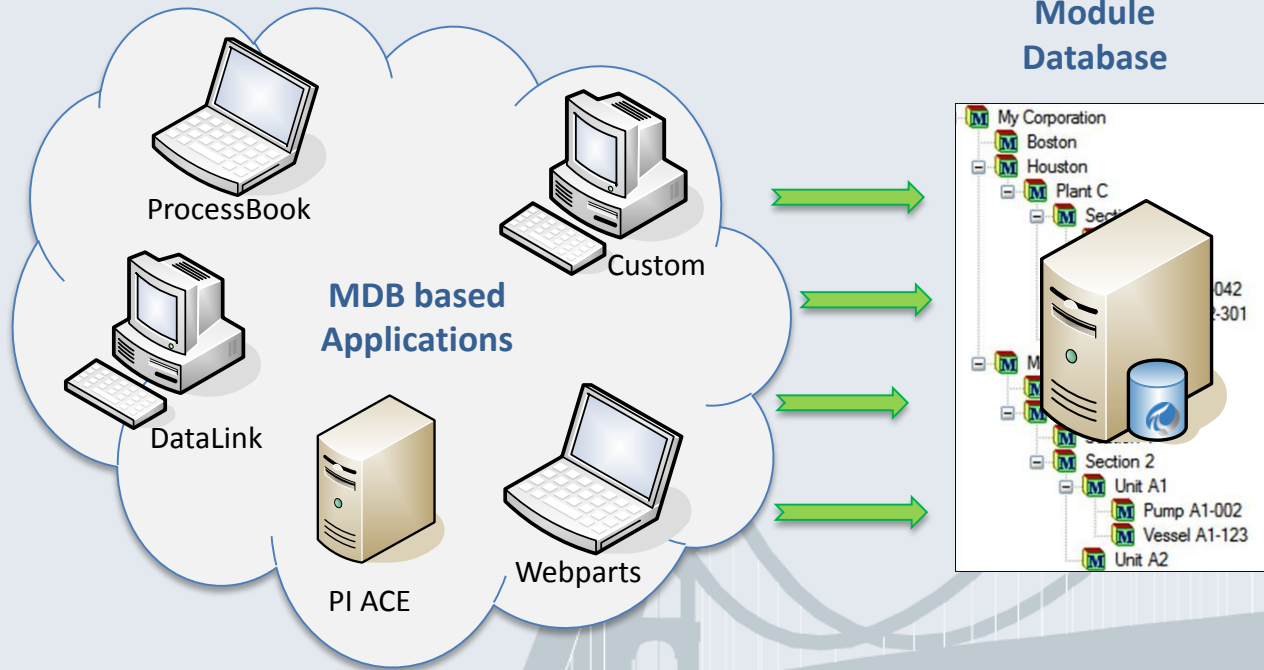
Temp

Level

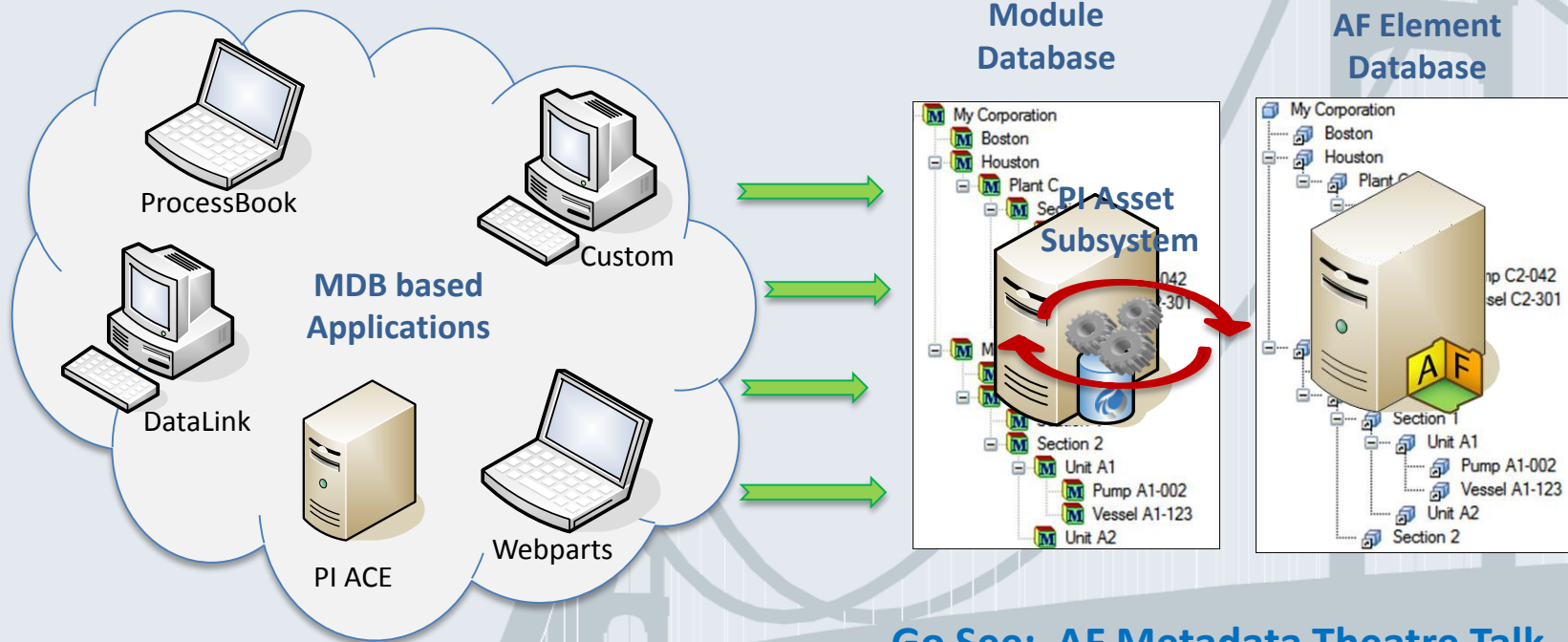
Conc



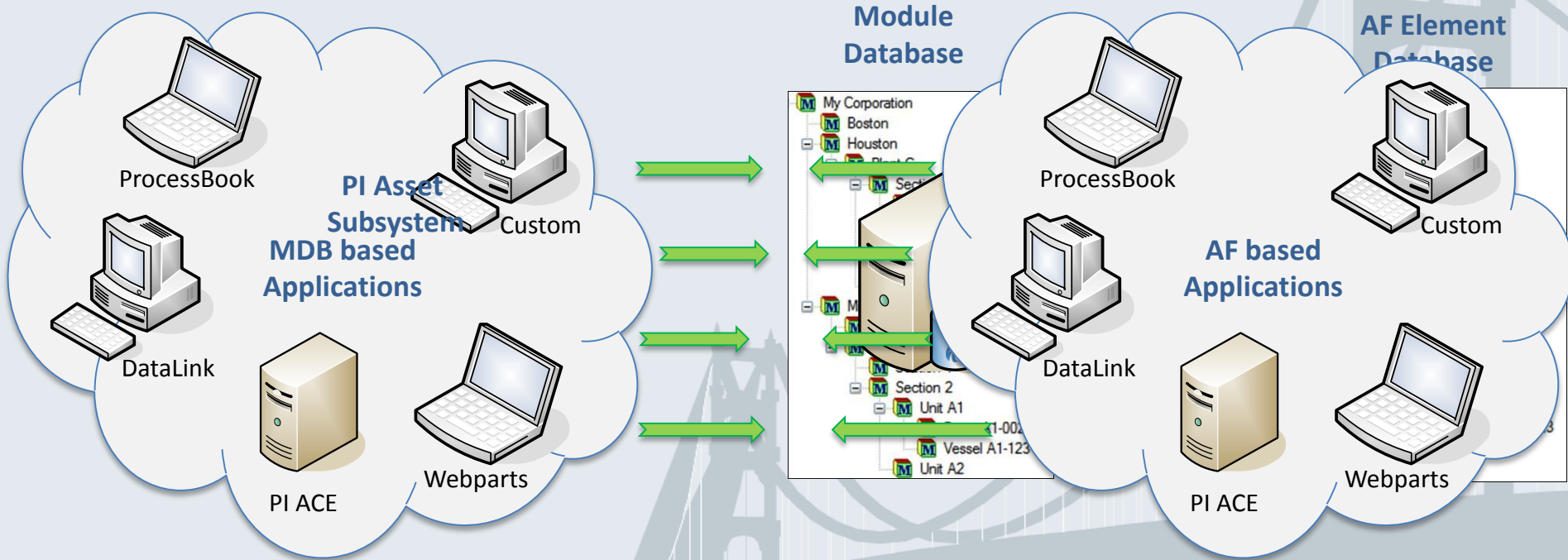
Asset Centric PI: Module DB



Migration

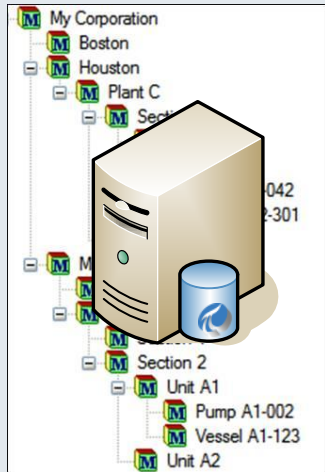


New Releases are AF Based



Asset Centric PI: AF Element DB

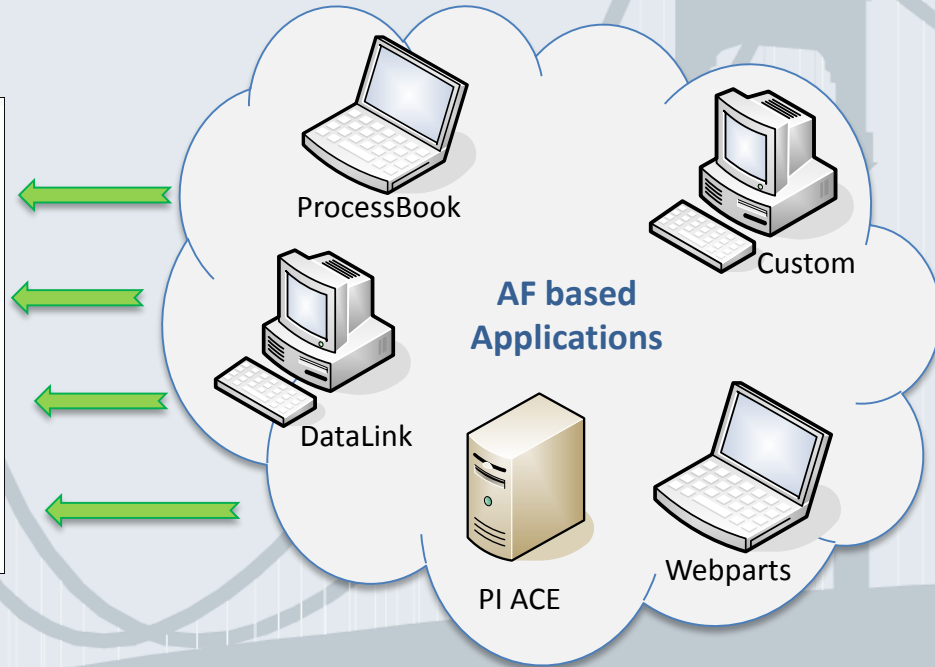
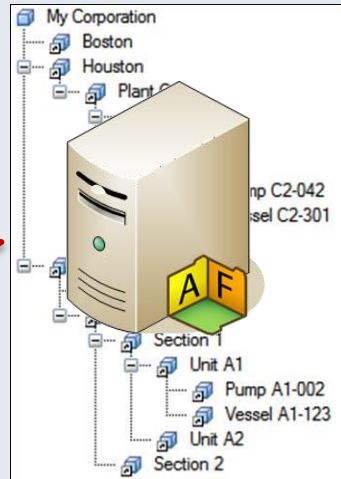
Module Database



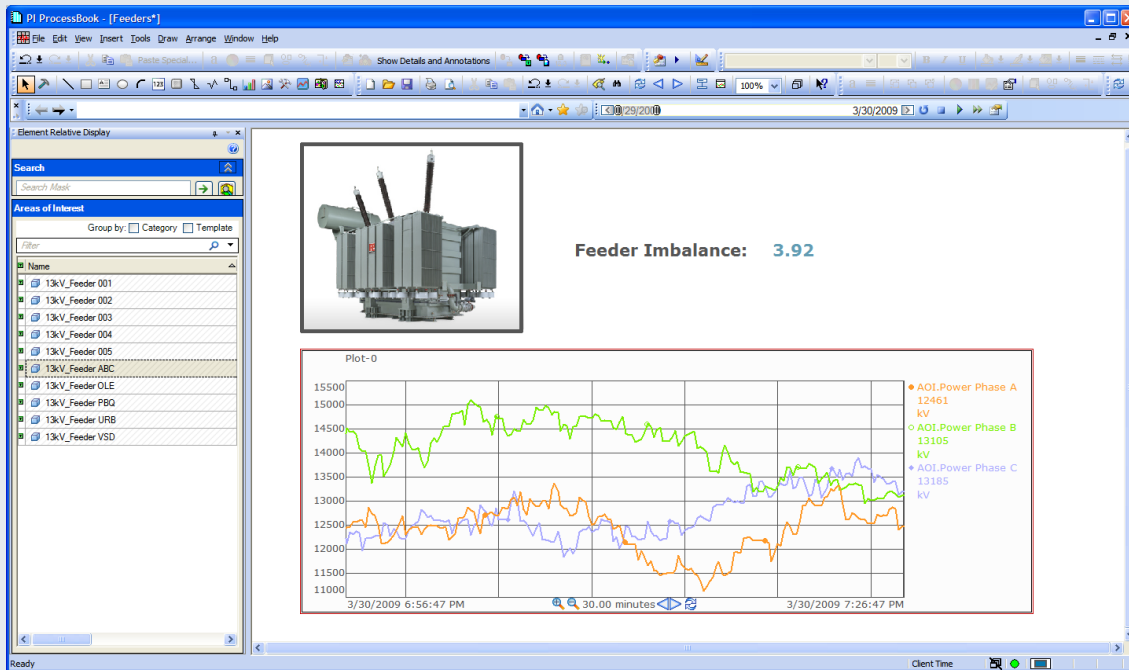
PI Asset Subsystem



AF Element Database



ProcessBook 3.2: Element Relative



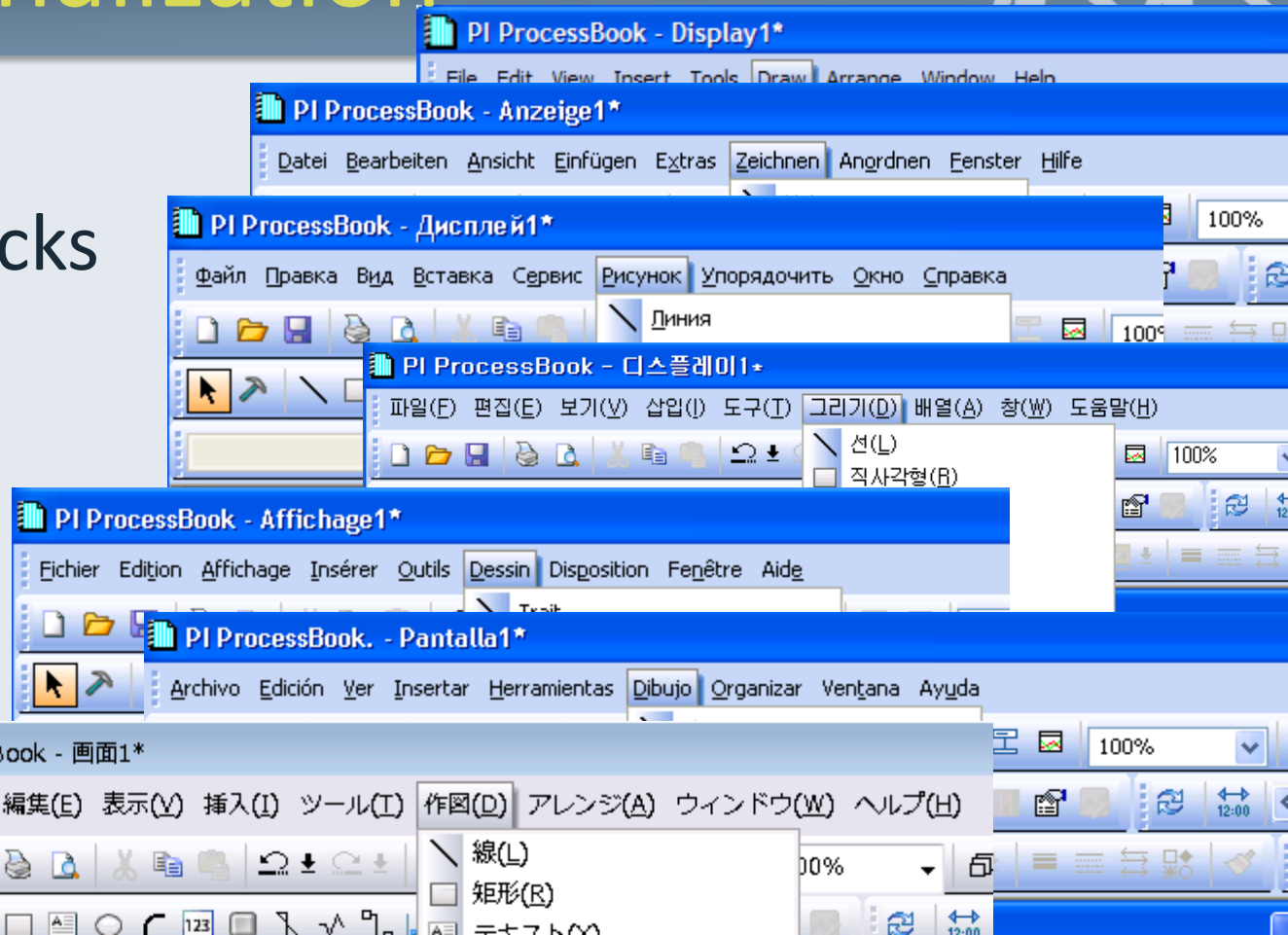
Go See: ProcessBook Theatre Talk

Asset Centric PI



Internationalization

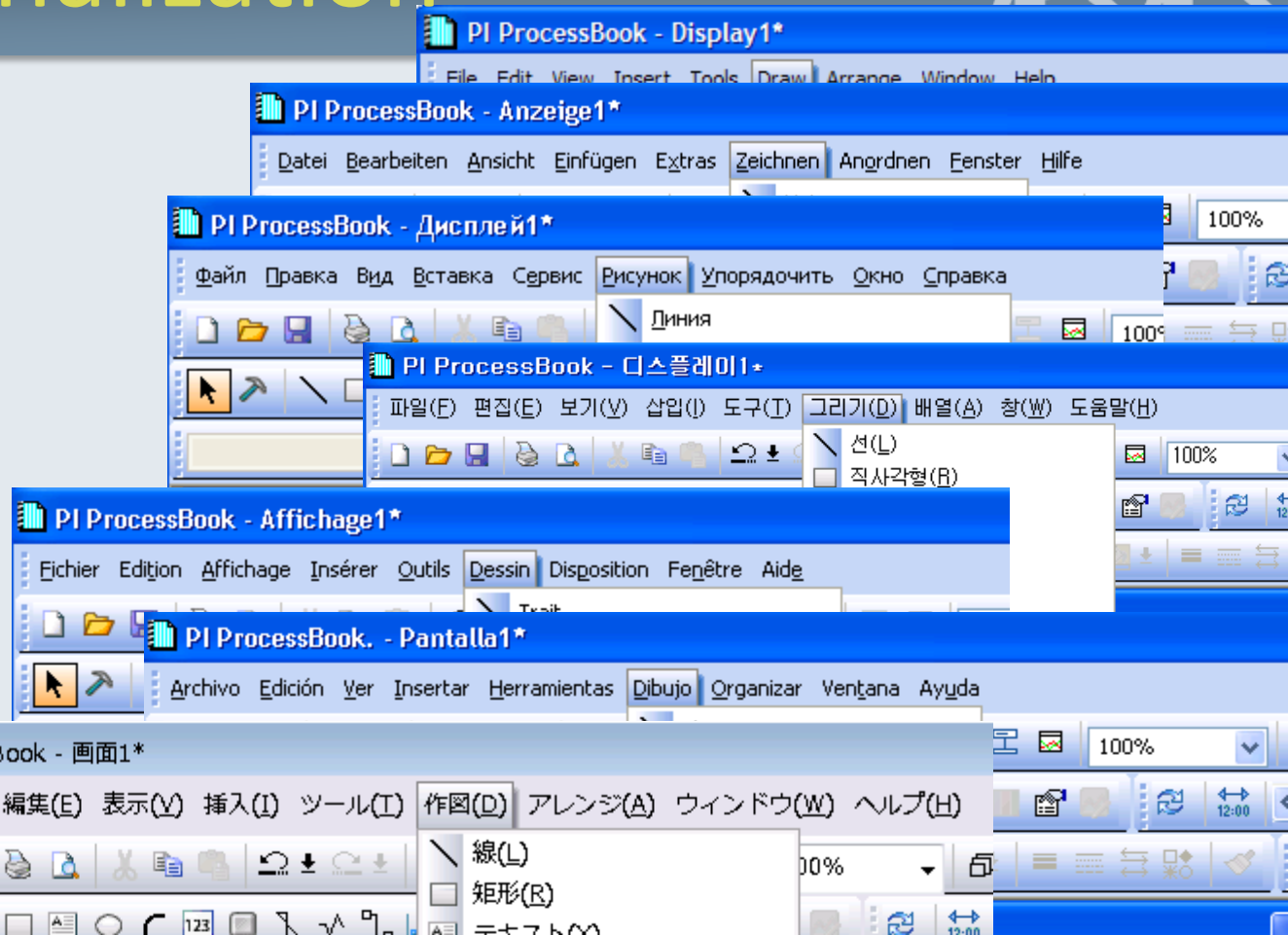
- Application Language packs
- 8 Languages
- Language Selection



Internationalization

- Brazilian Portuguese
- Simplified Chinese
- Russian
- German
- French
- Spanish
- Korean
- Japanese

Go See:
Internationalization
POD



Value Theme: System Scaling

- Making PI work well on a large scale
- System Scaling requires that...
 - All products (analysis components, PI-to-PI interfaces, etc.) must support large point counts and data rates
 - Installation and maintenance of large numbers of distributed nodes are manageable
 - Users can find any data
 - Complexities (caching, aggregation, security, redundancy) are hidden from users and system managers

System Scaling

- AF
 - High Availability
 - PI System Search
 - Performance Improvements
- PI Notifications
 - Performance and scalability
- OPC UA Server
- PI OLE DB
- PI System OLE DB
- PI Data Services
- AMI

PI Notifications

v1.1: Scalability
Q2 2009

- Performance

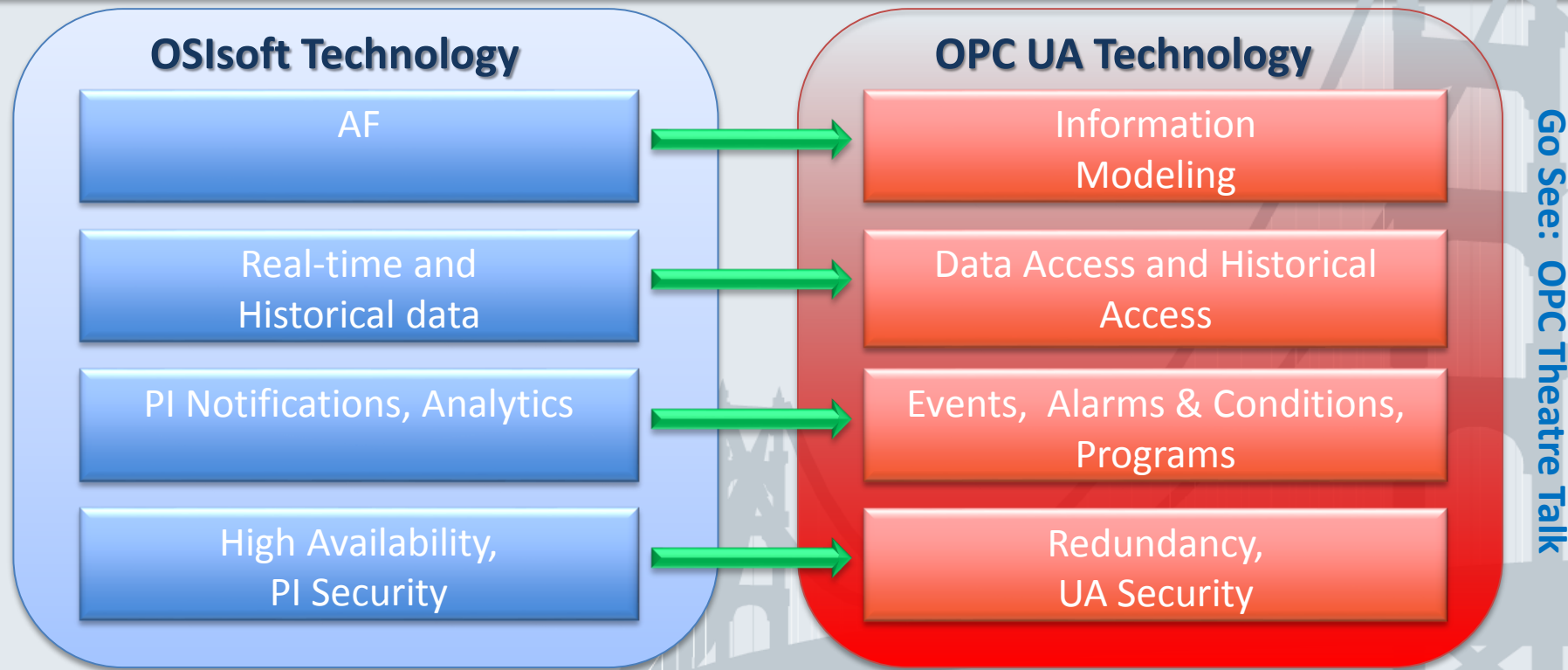
Improvements in **startup time**
and **throughput**

- Configuration

Templates enable **rapid** creation
of **maintainable** notifications

Go See: [PI Notifications Theatre Talk](#)

Mapping the PI System to OPC UA



PI System Data Access through SQL

- PI OLEDB provider allows applications (OLE DB consumers) working with PI Server data through SQL queries:

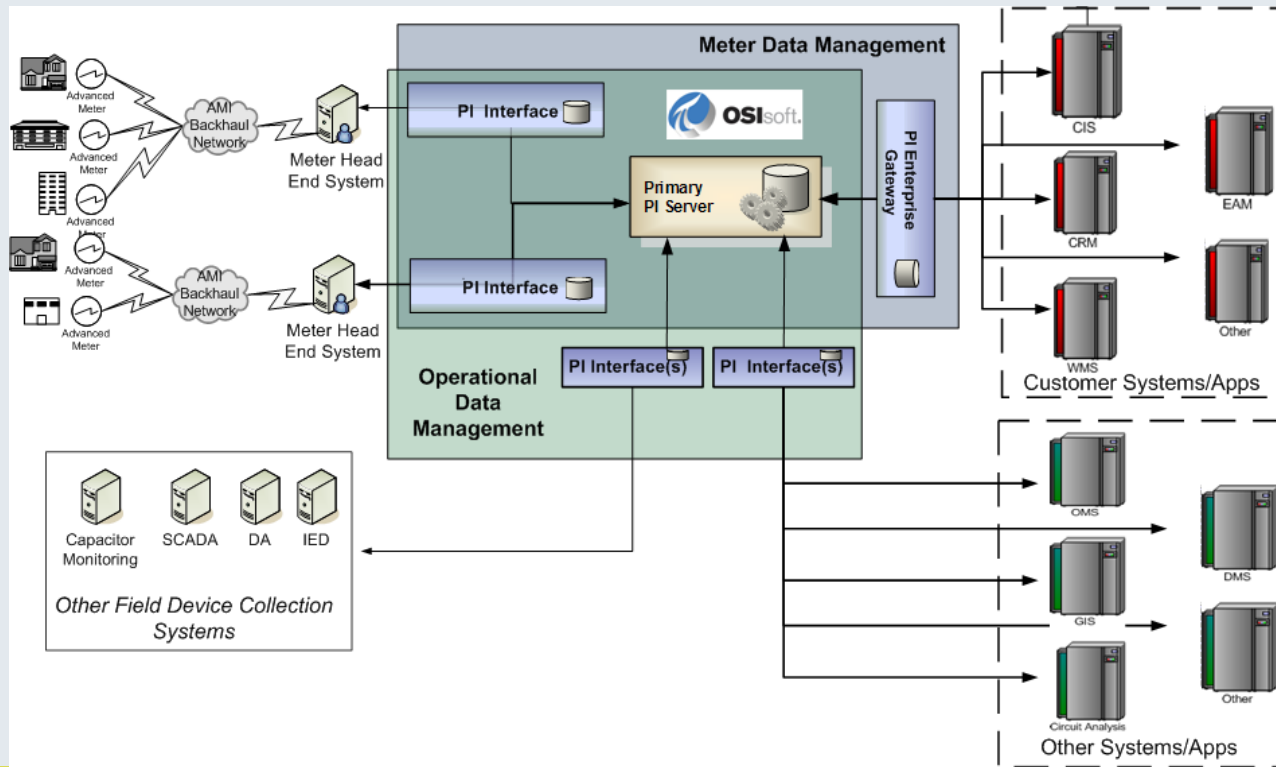


Coming soon:

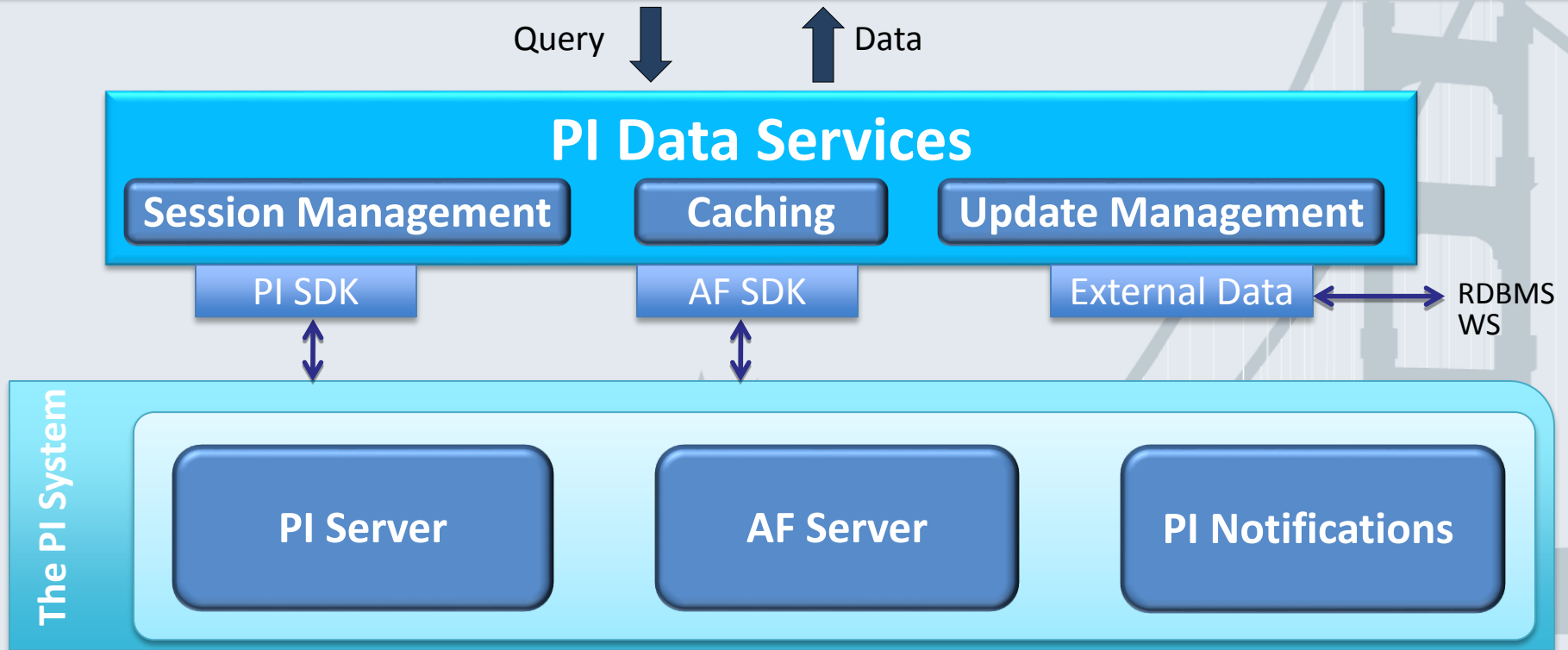
- Introduce PI JDBC
- Support asset centric PI through “PI System OLE DB Provider”
- Improve architecture in order to scale

Go See: [OLE DB Theatre Talk](#)

AMI: Built upon the Infrastructure



PI Data Services



Data Services



- Expose what we already do using new technology
- Reference data using:
 - PI tags
 - AF Element Attributes
- Easy to consume
 - Including code-free environments like:
 - Microsoft InfoPath
 - Microsoft BizTalk

[Go See: Web Services Theatre Talk](#)

Data Access



Conclusions



- Shift in the use of the traditional PI System
 - We are seeing more of an Enterprise approach
 - OSIsoft product development strategy is to support this
- Major Value Themes
 - System Scaling
 - Security
 - Internationalization
 - 64-bit support
 - Asset Centric PI
- Be sure to go to product talks
- More details in the product expo