

```
point.Snapshot;  
2. Dim srv As PISDK.Server  
3. Fore*%^(%) (point in server.PIPoints)?!!??  
4. Dim srv A PISDK.Server  
5. if (time_to_market > expected)  
{  
    solution = vCampus;}  
6. if (time_to_market > expected)  
{  
    solution = vCampus;}  
}
```

"where PI geeks meet"

OSIsoft®

V CAMPUS

2009

LIVE!

Palace Hotel, San Francisco, CA ▪ Dec. 1-2, 2009

```
1. foreach (point in server.PIPoints)  
{  
    point.Snapshot;  
}  
2. Dim srv As PISDK.Server  
3. Fore*%^(%) (point in server.PIPoints)?!!??  
4. Dim srv A PISDK.Server  
5. if (time_to_market > expected)  
{  
    solution = vCampus;}  
6. if (time_to_market > expected)  
{  
    solution = vCampus;}  
}
```

OSIsoft®

2009

V CAMPUS | LIVE!

Connecting Custom Web Parts to OSIsoft PI Web Parts

Gregory Leizerowicz

Center of Excellence Engineer, OSIsoft LLC

```
1. foreach (point in server.PIPoints)
{
    point.Snapshot;
}
2. Dim srv As PISDK.Server
3. Fore *%*% (point in server.PIPoints)?!!??
4. Dim srv A PISDK.Server
5. if (time to market > expected)
```

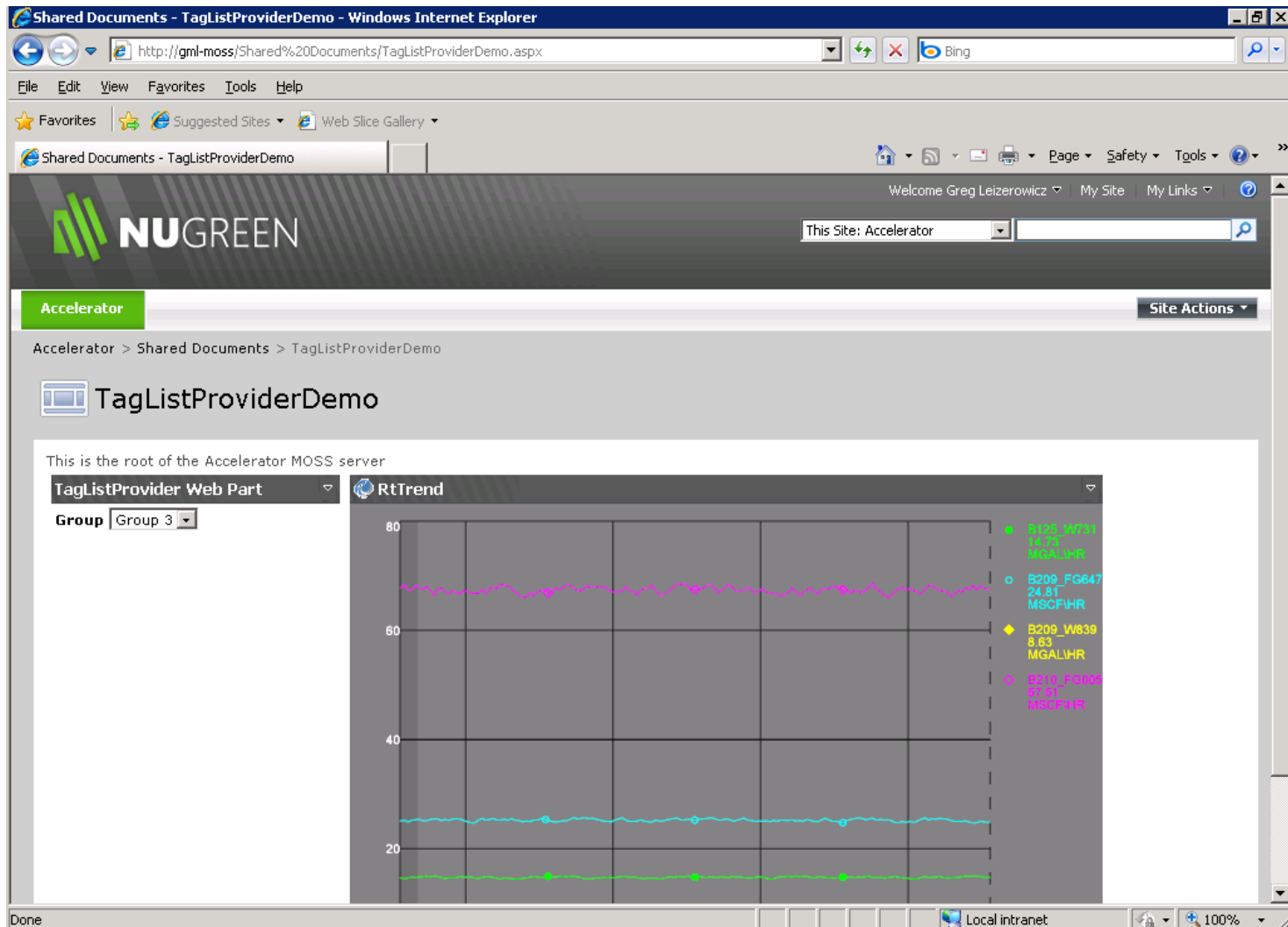
Agenda

- Overview of Connecting to PI WebParts
- Demo where we're going
- Development Environment
- Demo how to get there
- Tips and Tricks
- Wrap up
- Q&A

Connecting to PI Web Parts

- Client-side vs. Server-Side Connections
- SharePoint WebParts vs. ASP.NET Web Parts
- Supported Connection Interfaces

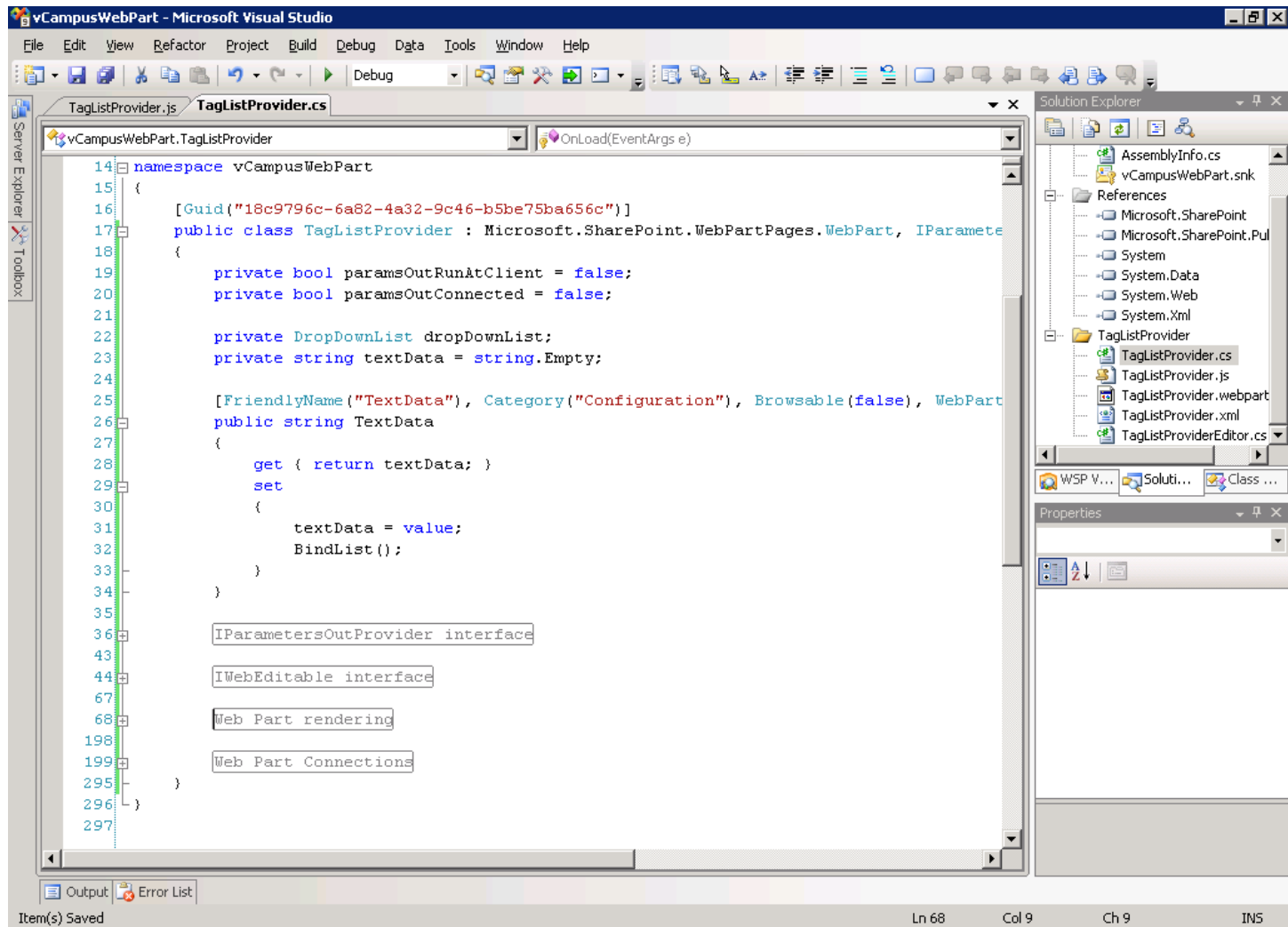
Demo – where are we going?



Development Environment (minimums)

- Windows Server 2003
- Windows SharePoint Services 3.0 (MOSS 2007 preferred)
- Standalone install gets you everything you need
- Visual Studio 2008 SP1
- Visual Studio Extensions for WSS (VSeWSS) 1.2
- 64-bit is available with version 1.3

Demo – how do we get there?



Tips & Tricks

- BrowserDesignMode and ConnectionRunAt.Server
- ReplaceTokens() method
- Embedded resources – javascript, images

Wrap up, Q&A

- All code and slides will be available on OSIsoft vCampus before you get home
- Questions?

```
1. point.Snapshot;  
2. Dim srv As PISDK.Server  
3. Fore*%*) (point in server.PIPoints)?!!??  
4. Dim srv A PISDK.Server  
5. if (time_to_market > expected)  
2. Dim srv As PISDK.Server  
3. Fore*%*) (point in server.PIPoints)?!!??  
4. Dim srv A PISDK.Server  
5. if (time_to_market > expected)
```

OSIsoft®

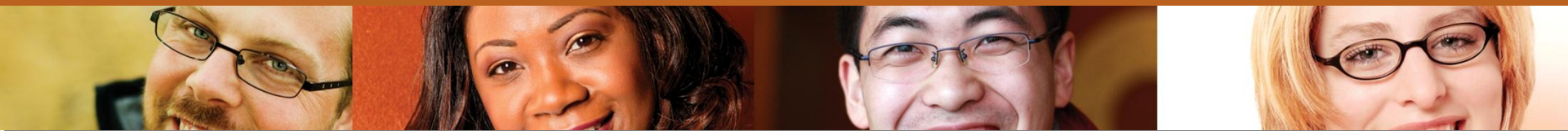
V

CAMPUS | LIVE!

2009

"where
PI geeks
meet"

THANK YOU.



```
1. foreach (point in server.PIPoints)  
{  
    point.Snapshot;  
}  
2. Dim srv As PISDK.Server  
3. Fore*%*) (point in server.PIPoints)?!!??  
4. Dim  
point.Snapshot;  
2. Dim srv As PISDK.Server  
3. Fore*%*) (point in server.PIPoints)?!!??  
4. Dim srv A PISDK.Server  
5. if (time_to_market > expected)
```

© 2009 OSIsoft, LLC. | OSIsoft vCampus Live! | where PI geeks meet