

```

point.Snapshot;
2. Dim srv As PISDK.Server
3. Fore*%*) (point in server.PIPoints)?!!??
4. Dim srv A PISDK.Server
5. if (time_to_market > expected)
{
solution = vCampus;}

```

"where PI geeks meet"

```

2. Dim srv As PISDK.Server
3. Fore*%*) (point in server.PIPoints)?!!??
4. Dim srv A PISDK.Server
5. if (time_to_market > expected)
{
solution = vCampus;}
6. if (time_to_market > expected)

```

OSIsoft®

V CAMPUS

2009

LIVE!

Palace Hotel, San Francisco, CA ▪ Dec. 1-2, 2009

```

1. foreach (point in server.PIPoints)
{
point.Snapshot;
}

```

```

2. Dim srv As PISDK.Server
3. Fore*%*) (point in server.PIPoints)?!!??
4. Dim srv A PISDK.Server
5. if (time_to_market > expected)
{
solution = vCampus;}

```

© 2009 OSIsoft, LLC. | OSIsoft vCampus Live! | where PI geeks meet

```

2. Dim srv As PISDK.Server
3. Fore*%*) (point in server.PIPoints)?!!??
4. Dim srv A PISDK.Server
5. if (time_to_market > expected)
{
solution = vCampus;}

```

OSIsoft®

V

CAMPUS

2009

LIVE!

OSIsoft and Microsoft Partnering to Deliver Value

John Baier – OSIsoft

Jonathan Wise – Microsoft

Laurent Garrigues - OSIsoft

Roman Schindlauer –
Microsoft

Greg Leizerowicz - OSIsoft

```
1. foreach (point in server.PIPoints)
{
    point.Snapshot;
}
2. Dim srv As PISDK.Server
3. Foreach (point in server.PIPoints)???
4. Dim srv A PISDK.Server
5. if (time_to_market > expected)
```

OSIsoft and Microsoft - Alliance History



2009 GLOBAL ISV
Industry
PARTNER OF THE YEAR
WINNER



2009 OFFICE BUSINESS APPLICATION
PARTNER OF THE YEAR
WINNER



OSIsoft – Microsoft Alliance Partnership 2007

**OSIsoft – Gold Certified Microsoft
Partner in 2004**



**PI System – Certified on
Windows Server 2003**

**OSIsoft released first version of the web offering
on SharePoint version 1 (Digital Dashboard)**



**OSIsoft #3 company to sign up
for VBA in 1997**

**OSIsoft ProcessBook #1 manufacturing
company certified on Windows 95**



**OSIsoft started converting PI Server
to beta version of NT in 1993**



Building On Your Existing Infrastructure

OSIsoft & Microsoft have forged a strong relationship to drive business value for joint customers, building on existing infrastructure



PI Infrastructure

PI DataLink

**PI DataLink for
Excel Services**

PI WebParts

**Dynamic OBA
Accelerators**



Microsoft®

**SharePoint
Server**

Excel Services

PerformancePoint

Office 2007

SQL Server



**BUSINESS
VALUE**

Technical Roadmap Alignment

- **Office 2010 Integration (Launch Partner)**
 - PI data and events within Office 2010
 - BI – PowerPivot, Excel 2010, SharePoint 2010
 - Office Communication Server CS R2
- **Silverlight Visualization**
 - For PI Web Parts and Rich Internet Visualization
- **StreamInsight (Launch Partner)**
 - Advanced Analytics and Edge Processing for PI

OSIsoft®

V

CAMPUS

2009

LIVE!

Microsoft StreamInsight

Roman Schindlauer – Program Manager,
Microsoft

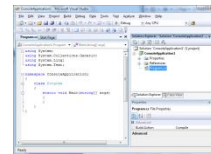
Laurent Garrigues – Product Manager,
OSIsoft

```
1. foreach (point in server.PIPoints)
{
    point.Snapshot;
}
2. Dim srv As PISDK.Server
3. Foreach (point in server.PIPoints)
4. Dim srv A PISDK.Server
```

```
1. foreach (point in server.PIPoints)
{
    point.Snapshot;
}
2. Dim srv As PISDK.Server
3. Foreach (point in server.PIPoints)
4. Dim srv A PISDK.Server
5. if (time_to_market > expected)
```

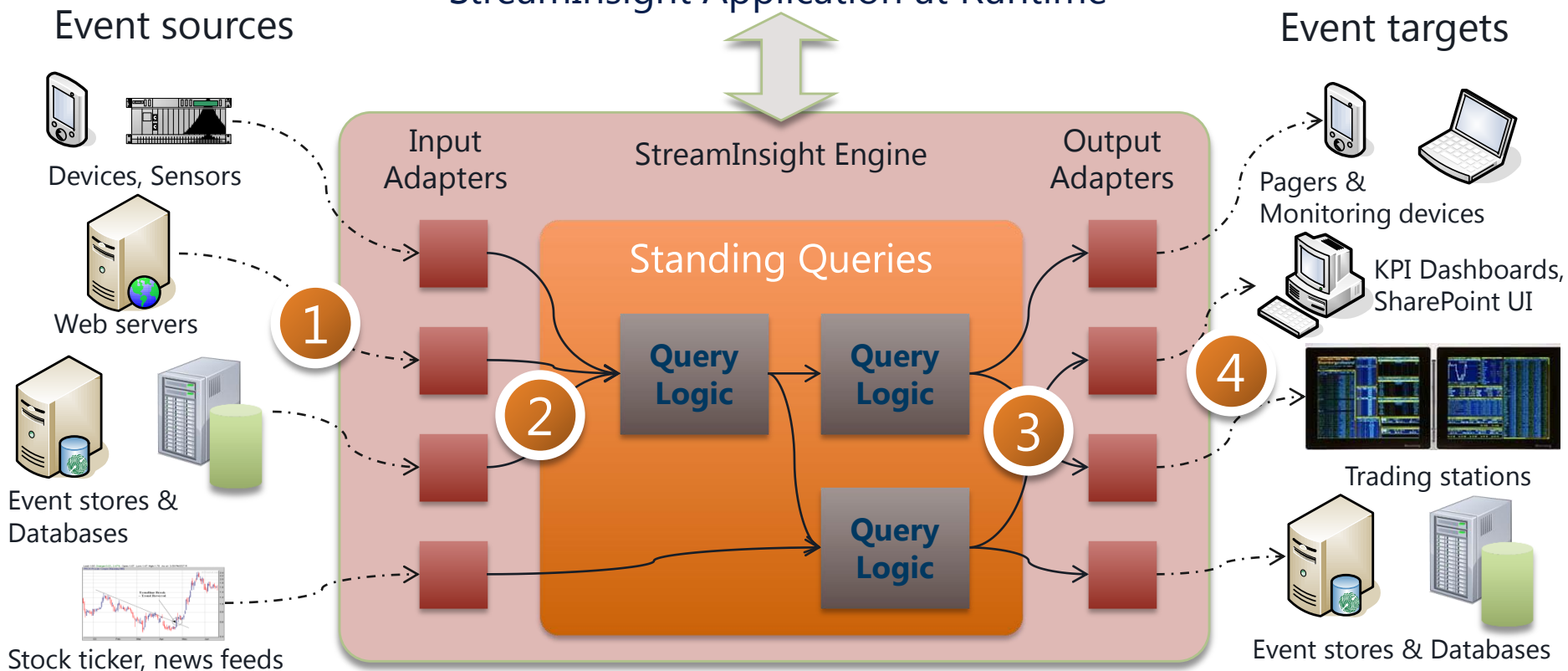
StreamInsight Platform

StreamInsight Application Development

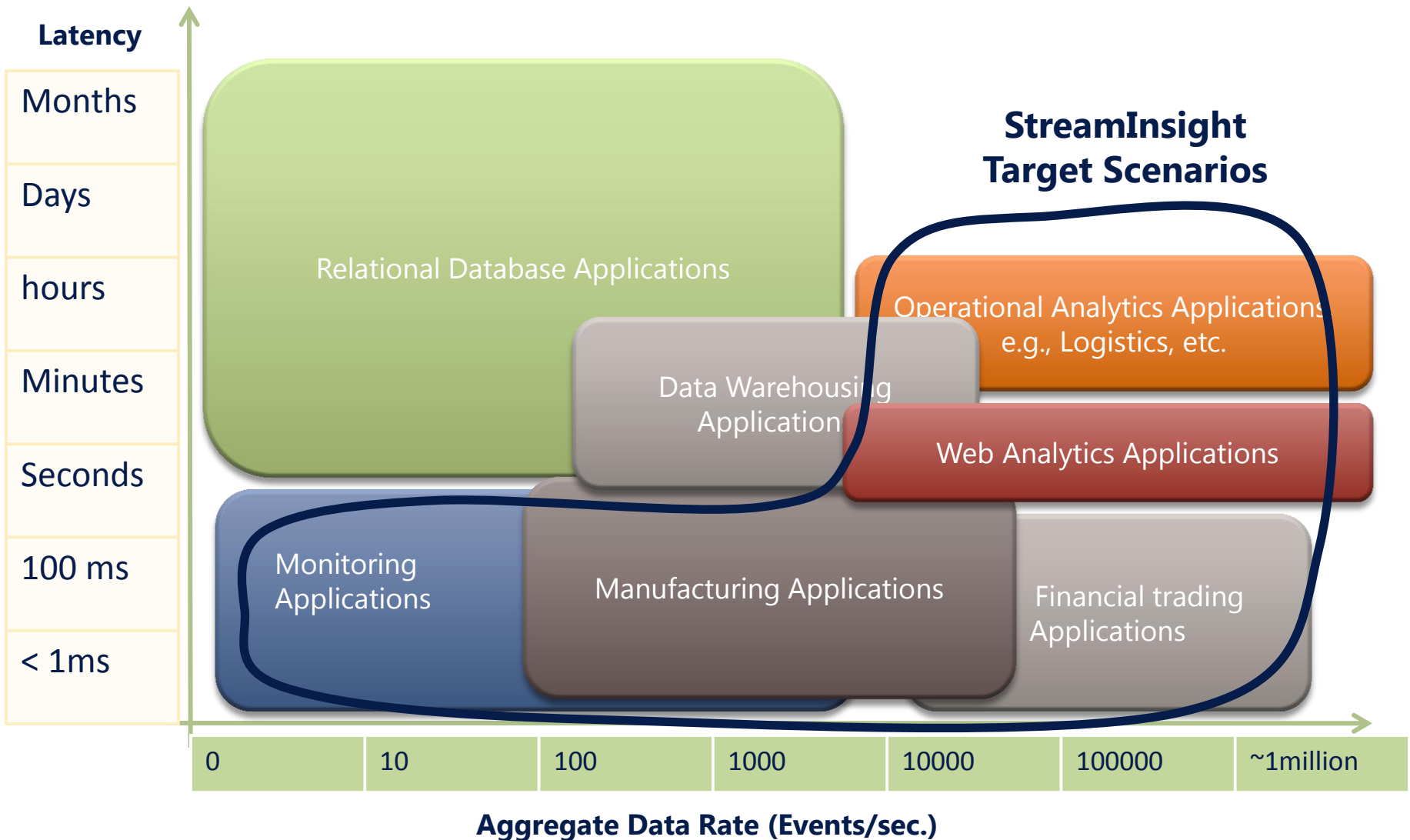


.NET
C#
LINQ

StreamInsight Application at Runtime



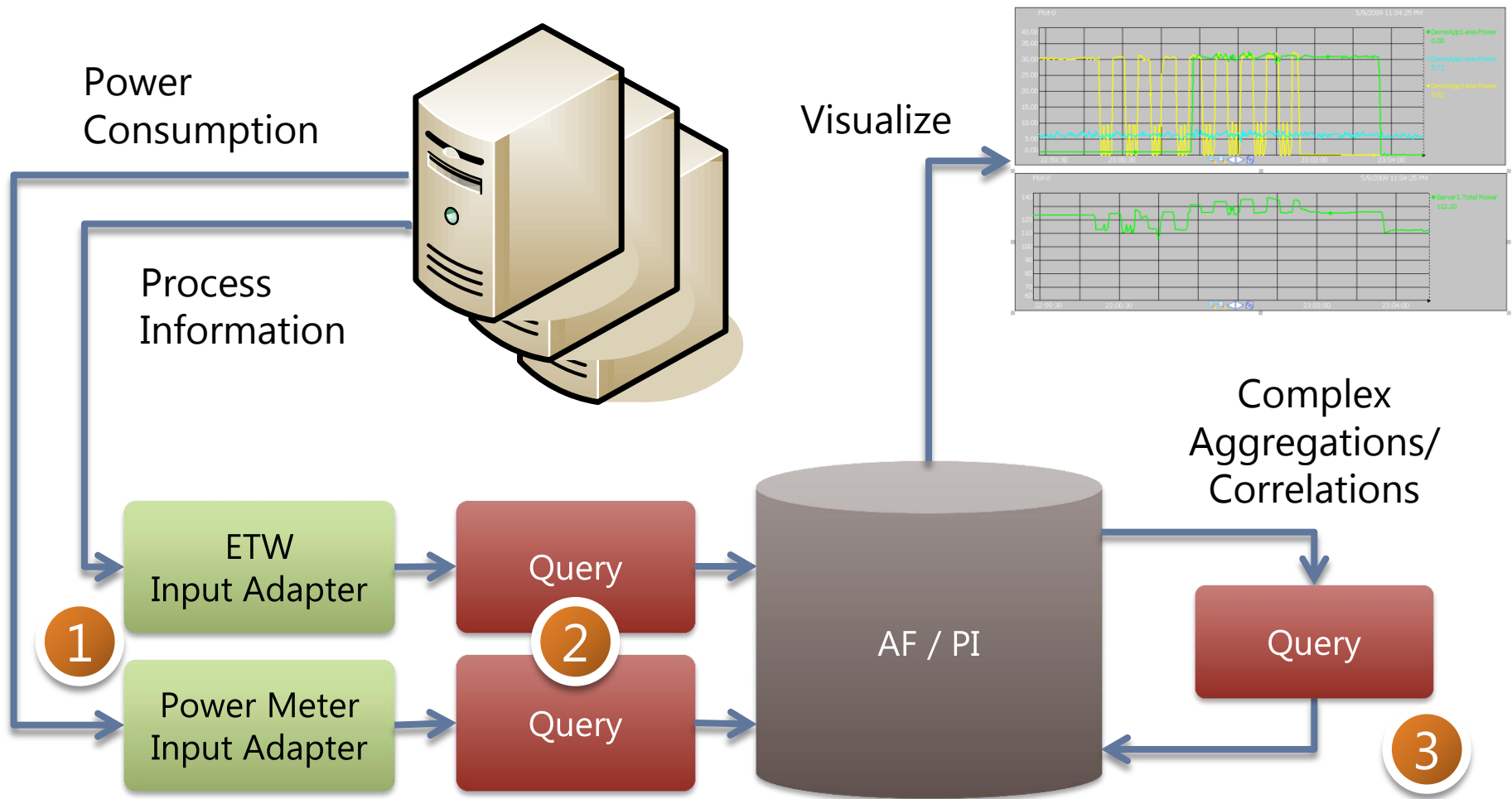
StreamInsight Scenarios



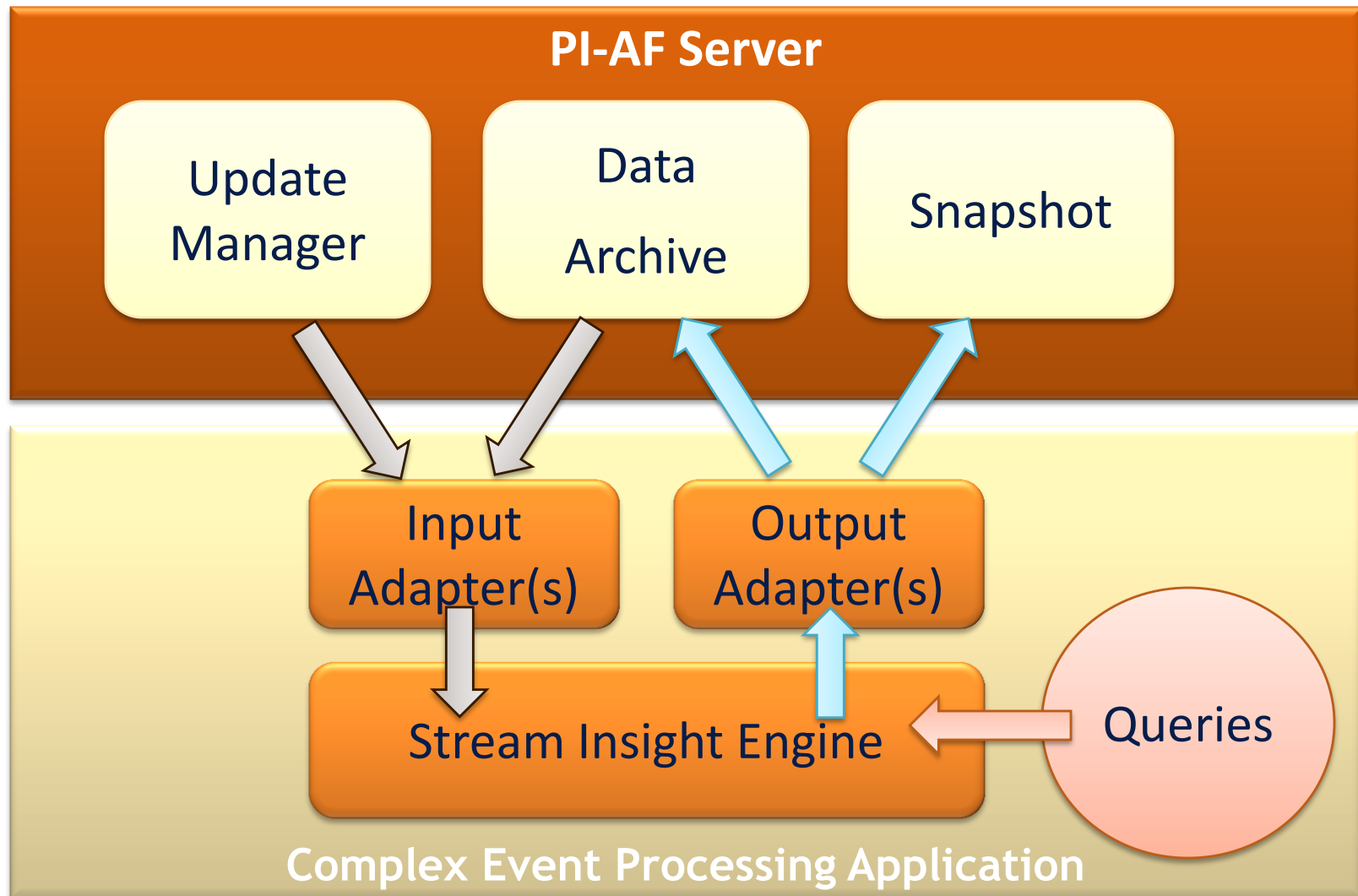
StreamInsight Features

- Runtime environment for continuous and event-driven processing
- In-memory, no persistence
- Declarative query language: LINQ
- .NET APIs for Input/Output Adapters
- Flexible deployment models
- Extensibility: Aggregates, Operators
- Rich diagnostic & debugging interface

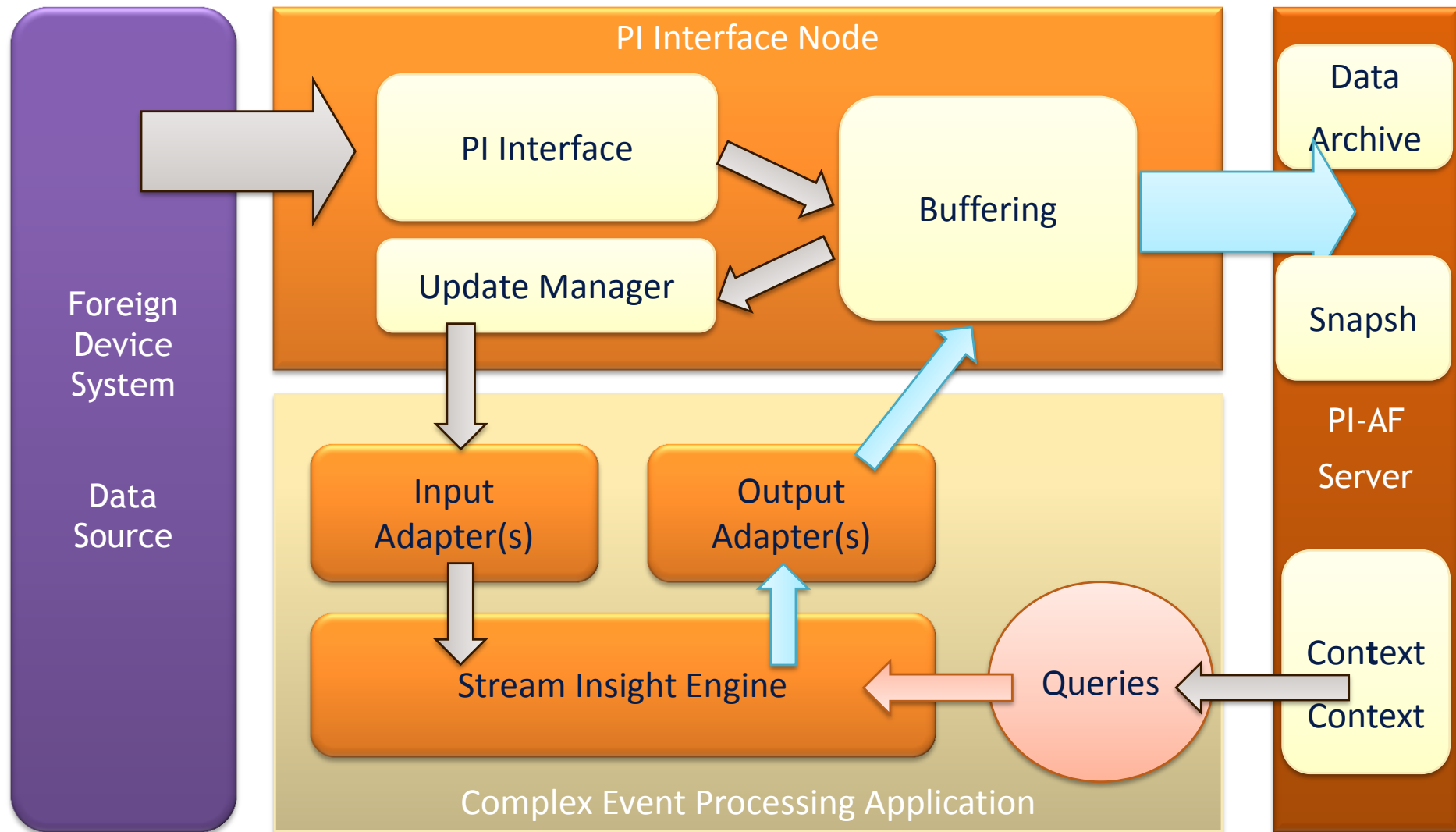
Power Consumption Monitoring



StreamInsight with the PI Server



Edge processing – CEP at the interface



Adapter Prototypes

- Read from / write to PI & AF, using SDKs
- Streams Defined by
 - PI Point(s)
 - AF Attributes
 - AF Elements
- CTP of PI / AF Adapters on vCampus
- Hands on Opportunity Tomorrow in the Learning Labs



What is an Office Business Application? And what makes them Dynamic?

Enabling Dynamic Office Business Applications



OSIsoft®

2009

V CAMPUS | LIVE!

Jonathan Wise, Developer Evangelist

Microsoft®

Your potential. Our passion.™

```
1. foreach (point in server.PIPoints)
{
    point.Snapshot;
}
2. Dim srv As PISDK.Server
3. Foreach*%*% (point in server.PIPoints)?!!??
4. Dim srv A PISDK.Server
```

```
1. foreach (point in server.PIPoints)
{
    point.Snapshot;
}
2. Dim srv As PISDK.Server
3. Foreach*%*% (point in server.PIPoints)?!!??
4. Dim srv A PISDK.Server
5. if (time_to_market > expected)
```



Microsoft Business Productivity Infrastructure

**Best Productivity Experience
Across PC, Phone, Browser**



IT Choice and Value



**Unified
Communications**

**Business
Intelligence**

**Enterprise
Content
Management**

Collaboration

**Enterprise
Search**

Unified Business Platform

Microsoft Business Productivity Infrastructure

Office Brings Even More Value to Server & Services Capabilities

Deliver the value of servers
& services to users



Microsoft®
Office 2010



- Promote faster adoption of new capabilities through tools used every day
- Surface LOB information in familiar applications
- Single-interface training helps manage support costs

Meet Deadlines & Reduce Time Spent Coordinating Changes By Enabling Multiple Team Members to Work Together in Real-time

Presence

Accounting

Option to lock paragraphs

Host on-premises with SharePoint

Contoso Landscape Design - Microsoft Word

File Home Insert Page Layout References Mailings Review View

Clipboard Font Paragraph Styles

Calibri (Body) 11 A⁺ A⁻ A² A³ A⁴ A⁵ A⁶ A⁷ A⁸ A⁹ A¹⁰ A¹¹ A¹² A¹³ A¹⁴ A¹⁵ A¹⁶ A¹⁷ A¹⁸ A¹⁹ A²⁰ A²¹ A²² A²³ A²⁴ A²⁵ A²⁶ A²⁷ A²⁸ A²⁹ A³⁰ A³¹ A³² A³³ A³⁴ A³⁵ A³⁶ A³⁷ A³⁸ A³⁹ A⁴⁰ A⁴¹ A⁴² A⁴³ A⁴⁴ A⁴⁵ A⁴⁶ A⁴⁷ A⁴⁸ A⁴⁹ A⁵⁰ A⁵¹ A⁵² A⁵³ A⁵⁴ A⁵⁵ A⁵⁶ A⁵⁷ A⁵⁸ A⁵⁹ A⁶⁰ A⁶¹ A⁶² A⁶³ A⁶⁴ A⁶⁵ A⁶⁶ A⁶⁷ A⁶⁸ A⁶⁹ A⁷⁰ A⁷¹ A⁷² A⁷³ A⁷⁴ A⁷⁵ A⁷⁶ A⁷⁷ A⁷⁸ A⁷⁹ A⁸⁰ A⁸¹ A⁸² A⁸³ A⁸⁴ A⁸⁵ A⁸⁶ A⁸⁷ A⁸⁸ A⁸⁹ A⁹⁰ A⁹¹ A⁹² A⁹³ A⁹⁴ A⁹⁵ A⁹⁶ A⁹⁷ A⁹⁸ A⁹⁹ A¹⁰⁰ A¹⁰¹ A¹⁰² A¹⁰³ A¹⁰⁴ A¹⁰⁵ A¹⁰⁶ A¹⁰⁷ A¹⁰⁸ A¹⁰⁹ A¹¹⁰ A¹¹¹ A¹¹² A¹¹³ A¹¹⁴ A¹¹⁵ A¹¹⁶ A¹¹⁷ A¹¹⁸ A¹¹⁹ A¹²⁰ A¹²¹ A¹²² A¹²³ A¹²⁴ A¹²⁵ A¹²⁶ A¹²⁷ A¹²⁸ A¹²⁹ A¹³⁰ A¹³¹ A¹³² A¹³³ A¹³⁴ A¹³⁵ A¹³⁶ A¹³⁷ A¹³⁸ A¹³⁹ A¹⁴⁰ A¹⁴¹ A¹⁴² A¹⁴³ A¹⁴⁴ A¹⁴⁵ A¹⁴⁶ A¹⁴⁷ A¹⁴⁸ A¹⁴⁹ A¹⁵⁰ A¹⁵¹ A¹⁵² A¹⁵³ A¹⁵⁴ A¹⁵⁵ A¹⁵⁶ A¹⁵⁷ A¹⁵⁸ A¹⁵⁹ A¹⁶⁰ A¹⁶¹ A¹⁶² A¹⁶³ A¹⁶⁴ A¹⁶⁵ A¹⁶⁶ A¹⁶⁷ A¹⁶⁸ A¹⁶⁹ A¹⁷⁰ A¹⁷¹ A¹⁷² A¹⁷³ A¹⁷⁴ A¹⁷⁵ A¹⁷⁶ A¹⁷⁷ A¹⁷⁸ A¹⁷⁹ A¹⁸⁰ A¹⁸¹ A¹⁸² A¹⁸³ A¹⁸⁴ A¹⁸⁵ A¹⁸⁶ A¹⁸⁷ A¹⁸⁸ A¹⁸⁹ A¹⁹⁰ A¹⁹¹ A¹⁹² A¹⁹³ A¹⁹⁴ A¹⁹⁵ A¹⁹⁶ A¹⁹⁷ A¹⁹⁸ A¹⁹⁹ A²⁰⁰ A²⁰¹ A²⁰² A²⁰³ A²⁰⁴ A²⁰⁵ A²⁰⁶ A²⁰⁷ A²⁰⁸ A²⁰⁹ A²¹⁰ A²¹¹ A²¹² A²¹³ A²¹⁴ A²¹⁵ A²¹⁶ A²¹⁷ A²¹⁸ A²¹⁹ A²²⁰ A²²¹ A²²² A²²³ A²²⁴ A²²⁵ A²²⁶ A²²⁷ A²²⁸ A²²⁹ A²³⁰ A²³¹ A²³² A²³³ A²³⁴ A²³⁵ A²³⁶ A²³⁷ A²³⁸ A²³⁹ A²⁴⁰ A²⁴¹ A²⁴² A²⁴³ A²⁴⁴ A²⁴⁵ A²⁴⁶ A²⁴⁷ A²⁴⁸ A²⁴⁹ A²⁵⁰ A²⁵¹ A²⁵² A²⁵³ A²⁵⁴ A²⁵⁵ A²⁵⁶ A²⁵⁷ A²⁵⁸ A²⁵⁹ A²⁶⁰ A²⁶¹ A²⁶² A²⁶³ A²⁶⁴ A²⁶⁵ A²⁶⁶ A²⁶⁷ A²⁶⁸ A²⁶⁹ A²⁷⁰ A²⁷¹ A²⁷² A²⁷³ A²⁷⁴ A²⁷⁵ A²⁷⁶ A²⁷⁷ A²⁷⁸ A²⁷⁹ A²⁸⁰ A²⁸¹ A²⁸² A²⁸³ A²⁸⁴ A²⁸⁵ A²⁸⁶ A²⁸⁷ A²⁸⁸ A²⁸⁹ A²⁹⁰ A²⁹¹ A²⁹² A²⁹³ A²⁹⁴ A²⁹⁵ A²⁹⁶ A²⁹⁷ A²⁹⁸ A²⁹⁹ A³⁰⁰ A³⁰¹ A³⁰² A³⁰³ A³⁰⁴ A³⁰⁵ A³⁰⁶ A³⁰⁷ A³⁰⁸ A³⁰⁹ A³¹⁰ A³¹¹ A³¹² A³¹³ A³¹⁴ A³¹⁵ A³¹⁶ A³¹⁷ A³¹⁸ A³¹⁹ A³²⁰ A³²¹ A³²² A³²³ A³²⁴ A³²⁵ A³²⁶ A³²⁷ A³²⁸ A³²⁹ A³³⁰ A³³¹ A³³² A³³³ A³³⁴ A³³⁵ A³³⁶ A³³⁷ A³³⁸ A³³⁹ A³⁴⁰ A³⁴¹ A³⁴² A³⁴³ A³⁴⁴ A³⁴⁵ A³⁴⁶ A³⁴⁷ A³⁴⁸ A³⁴⁹ A³⁵⁰ A³⁵¹ A³⁵² A³⁵³ A³⁵⁴ A³⁵⁵ A³⁵⁶ A³⁵⁷ A³⁵⁸ A³⁵⁹ A³⁶⁰ A³⁶¹ A³⁶² A³⁶³ A³⁶⁴ A³⁶⁵ A³⁶⁶ A³⁶⁷ A³⁶⁸ A³⁶⁹ A³⁷⁰ A³⁷¹ A³⁷² A³⁷³ A³⁷⁴ A³⁷⁵ A³⁷⁶ A³⁷⁷ A³⁷⁸ A³⁷⁹ A³⁸⁰ A³⁸¹ A³⁸² A³⁸³ A³⁸⁴ A³⁸⁵ A³⁸⁶ A³⁸⁷ A³⁸⁸ A³⁸⁹ A³⁹⁰ A³⁹¹ A³⁹² A³⁹³ A³⁹⁴ A³⁹⁵ A³⁹⁶ A³⁹⁷ A³⁹⁸ A³⁹⁹ A⁴⁰⁰ A⁴⁰¹ A⁴⁰² A⁴⁰³ A⁴⁰⁴ A⁴⁰⁵ A⁴⁰⁶ A⁴⁰⁷ A⁴⁰⁸ A⁴⁰⁹ A⁴¹⁰ A⁴¹¹ A⁴¹² A⁴¹³ A⁴¹⁴ A⁴¹⁵ A⁴¹⁶ A⁴¹⁷ A⁴¹⁸ A⁴¹⁹ A⁴²⁰ A⁴²¹ A⁴²² A⁴²³ A⁴²⁴ A⁴²⁵ A⁴²⁶ A⁴²⁷ A⁴²⁸ A⁴²⁹ A⁴³⁰ A⁴³¹ A⁴³² A⁴³³ A⁴³⁴ A⁴³⁵ A⁴³⁶ A⁴³⁷ A⁴³⁸ A⁴³⁹ A⁴⁴⁰ A⁴⁴¹ A⁴⁴² A⁴⁴³ A⁴⁴⁴ A⁴⁴⁵ A⁴⁴⁶ A⁴⁴⁷ A⁴⁴⁸ A⁴⁴⁹ A⁴⁵⁰ A⁴⁵¹ A⁴⁵² A⁴⁵³ A⁴⁵⁴ A⁴⁵⁵ A⁴⁵⁶ A⁴⁵⁷ A⁴⁵⁸ A⁴⁵⁹ A⁴⁶⁰ A⁴⁶¹ A⁴⁶² A⁴⁶³ A⁴⁶⁴ A⁴⁶⁵ A⁴⁶⁶ A⁴⁶⁷ A⁴⁶⁸ A⁴⁶⁹ A⁴⁷⁰ A⁴⁷¹ A⁴⁷² A⁴⁷³ A⁴⁷⁴ A⁴⁷⁵ A⁴⁷⁶ A⁴⁷⁷ A⁴⁷⁸ A⁴⁷⁹ A⁴⁸⁰ A⁴⁸¹ A⁴⁸² A⁴⁸³ A⁴⁸⁴ A⁴⁸⁵ A⁴⁸⁶ A⁴⁸⁷ A⁴⁸⁸ A⁴⁸⁹ A⁴⁹⁰ A⁴⁹¹ A⁴⁹² A⁴⁹³ A⁴⁹⁴ A⁴⁹⁵ A⁴⁹⁶ A⁴⁹⁷ A⁴⁹⁸ A⁴⁹⁹ A⁵⁰⁰ A⁵⁰¹ A⁵⁰² A⁵⁰³ A⁵⁰⁴ A⁵⁰⁵ A⁵⁰⁶ A⁵⁰⁷ A⁵⁰⁸ A⁵⁰⁹ A⁵¹⁰ A⁵¹¹ A⁵¹² A⁵¹³ A⁵¹⁴ A⁵¹⁵ A⁵¹⁶ A⁵¹⁷ A⁵¹⁸ A⁵¹⁹ A⁵²⁰ A⁵²¹ A⁵²² A⁵²³ A⁵²⁴ A⁵²⁵ A⁵²⁶ A⁵²⁷ A⁵²⁸ A⁵²⁹ A⁵³⁰ A⁵³¹ A⁵³² A⁵³³ A⁵³⁴ A⁵³⁵ A⁵³⁶ A⁵³⁷ A⁵³⁸ A⁵³⁹ A⁵⁴⁰ A⁵⁴¹ A⁵⁴² A⁵⁴³ A⁵⁴⁴ A⁵⁴⁵ A⁵⁴⁶ A⁵⁴⁷ A⁵⁴⁸ A⁵⁴⁹ A⁵⁵⁰ A⁵⁵¹ A⁵⁵² A⁵⁵³ A⁵⁵⁴ A⁵⁵⁵ A⁵⁵⁶ A⁵⁵⁷ A⁵⁵⁸ A⁵⁵⁹ A⁵⁶⁰ A⁵⁶¹ A⁵⁶² A⁵⁶³ A⁵⁶⁴ A⁵⁶⁵ A⁵⁶⁶ A⁵⁶⁷ A⁵⁶⁸ A⁵⁶⁹ A⁵⁷⁰ A⁵⁷¹ A⁵⁷² A⁵⁷³ A⁵⁷⁴ A⁵⁷⁵ A⁵⁷⁶ A⁵⁷⁷ A⁵⁷⁸ A⁵⁷⁹ A⁵⁸⁰ A⁵⁸¹ A⁵⁸² A⁵⁸³ A⁵⁸⁴ A⁵⁸⁵ A⁵⁸⁶ A⁵⁸⁷ A⁵⁸⁸ A⁵⁸⁹ A⁵⁹⁰ A⁵⁹¹ A⁵⁹² A⁵⁹³ A⁵⁹⁴ A⁵⁹⁵ A⁵⁹⁶ A⁵⁹⁷ A⁵⁹⁸ A⁵⁹⁹ A⁶⁰⁰ A⁶⁰¹ A⁶⁰² A⁶⁰³ A⁶⁰⁴ A⁶⁰⁵ A⁶⁰⁶ A⁶⁰⁷ A⁶⁰⁸ A⁶⁰⁹ A⁶¹⁰ A⁶¹¹ A⁶¹² A⁶¹³ A⁶¹⁴ A⁶¹⁵ A⁶¹⁶ A⁶¹⁷ A⁶¹⁸ A⁶¹⁹ A⁶²⁰ A⁶²¹ A⁶²² A⁶²³ A⁶²⁴ A⁶²⁵ A⁶²⁶ A⁶²⁷ A⁶²⁸ A⁶²⁹ A⁶³⁰ A⁶³¹ A⁶³² A⁶³³ A⁶³⁴ A⁶³⁵ A⁶³⁶ A⁶³⁷ A⁶³⁸ A⁶³⁹ A⁶⁴⁰ A⁶⁴¹ A⁶⁴² A⁶⁴³ A⁶⁴⁴ A⁶⁴⁵ A⁶⁴⁶ A⁶⁴⁷ A⁶⁴⁸ A⁶⁴⁹ A⁶⁵⁰ A⁶⁵¹ A⁶⁵² A⁶⁵³ A⁶⁵⁴ A⁶⁵⁵ A⁶⁵⁶ A⁶⁵⁷ A⁶⁵⁸ A⁶⁵⁹ A⁶⁶⁰ A⁶⁶¹ A⁶⁶² A⁶⁶³ A⁶⁶⁴ A⁶⁶⁵ A⁶⁶⁶ A⁶⁶⁷ A⁶⁶⁸ A⁶⁶⁹ A⁶⁷⁰ A⁶⁷¹ A⁶⁷² A⁶⁷³ A⁶⁷⁴ A⁶⁷⁵ A⁶⁷⁶ A⁶⁷⁷ A⁶⁷⁸ A⁶⁷⁹ A⁶⁸⁰ A⁶⁸¹ A⁶⁸² A⁶⁸³ A⁶⁸⁴ A⁶⁸⁵ A⁶⁸⁶ A⁶⁸⁷ A⁶⁸⁸ A⁶⁸⁹ A⁶⁹⁰ A⁶⁹¹ A⁶⁹² A⁶⁹³ A⁶⁹⁴ A⁶⁹⁵ A⁶⁹⁶ A⁶⁹⁷ A⁶⁹⁸ A⁶⁹⁹ A⁷⁰⁰ A⁷⁰¹ A⁷⁰² A⁷⁰³ A⁷⁰⁴ A⁷⁰⁵ A⁷⁰⁶ A⁷⁰⁷ A⁷⁰⁸ A⁷⁰⁹ A⁷¹⁰ A⁷¹¹ A⁷¹² A⁷¹³ A⁷¹⁴ A⁷¹⁵ A⁷¹⁶ A⁷¹⁷ A⁷¹⁸ A⁷¹⁹ A⁷²⁰ A⁷²¹ A⁷²² A⁷²³ A⁷²⁴ A⁷²⁵ A⁷²⁶ A⁷²⁷ A⁷²⁸ A⁷²⁹ A⁷³⁰ A⁷³¹ A⁷³² A⁷³³ A⁷³⁴ A⁷³⁵ A⁷³⁶ A⁷³⁷ A⁷³⁸ A⁷³⁹ A⁷⁴⁰ A⁷⁴¹ A⁷⁴² A⁷⁴³ A⁷⁴⁴ A⁷⁴⁵ A⁷⁴⁶ A⁷⁴⁷ A⁷⁴⁸ A⁷⁴⁹ A⁷⁵⁰ A⁷⁵¹ A⁷⁵² A⁷⁵³ A⁷⁵⁴ A⁷⁵⁵ A⁷⁵⁶ A⁷⁵⁷ A⁷⁵⁸ A⁷⁵⁹ A⁷⁶⁰ A⁷⁶¹ A⁷⁶² A⁷⁶³ A⁷⁶⁴ A⁷⁶⁵ A⁷⁶⁶ A⁷⁶⁷ A⁷⁶⁸ A⁷⁶⁹ A⁷⁷⁰ A⁷⁷¹ A⁷⁷² A⁷⁷³ A⁷⁷⁴ A⁷⁷⁵ A⁷⁷⁶ A⁷⁷⁷ A⁷⁷⁸ A⁷⁷⁹ A⁷⁸⁰ A⁷⁸¹ A⁷⁸² A⁷⁸³ A⁷⁸⁴ A⁷⁸⁵ A⁷⁸⁶ A⁷⁸⁷ A⁷⁸⁸ A⁷⁸⁹ A⁷⁹⁰ A⁷⁹¹ A⁷⁹² A⁷⁹³ A⁷⁹⁴ A⁷⁹⁵ A⁷⁹⁶ A⁷⁹⁷ A⁷⁹⁸ A⁷⁹⁹ A⁸⁰⁰ A⁸⁰¹ A⁸⁰² A⁸⁰³ A⁸⁰⁴ A⁸⁰⁵ A⁸⁰⁶ A⁸⁰⁷ A⁸⁰⁸ A⁸⁰⁹ A⁸¹⁰ A⁸¹¹ A⁸¹² A⁸¹³ A⁸¹⁴ A⁸¹⁵ A⁸¹⁶ A⁸¹⁷ A⁸¹⁸ A⁸¹⁹ A⁸²⁰ A⁸²¹ A⁸²² A⁸²³ A⁸²⁴ A⁸²⁵ A⁸²⁶ A⁸²⁷ A⁸²⁸ A⁸²⁹ A⁸³⁰ A⁸³¹ A⁸³² A⁸³³ A⁸³⁴ A⁸³⁵ A⁸³⁶ A⁸³⁷ A⁸³⁸ A⁸³⁹ A⁸⁴⁰ A⁸⁴¹ A⁸⁴² A⁸⁴³ A⁸⁴⁴ A⁸⁴⁵ A⁸⁴⁶ A⁸⁴⁷ A⁸⁴⁸ A⁸⁴⁹ A⁸⁵⁰ A⁸⁵¹ A⁸⁵² A⁸⁵³ A⁸⁵⁴ A⁸⁵⁵ A⁸⁵⁶ A⁸⁵⁷ A⁸⁵⁸ A⁸⁵⁹ A⁸⁶⁰ A⁸⁶¹ A⁸⁶² A⁸⁶³ A⁸⁶⁴ A⁸⁶⁵ A⁸⁶⁶ A⁸⁶⁷ A⁸⁶⁸ A⁸⁶⁹ A⁸⁷⁰ A⁸⁷¹ A⁸⁷² A⁸⁷³ A⁸⁷⁴ A⁸⁷⁵ A⁸⁷⁶ A⁸⁷⁷ A⁸⁷⁸ A⁸⁷⁹ A⁸⁸⁰ A⁸⁸¹ A⁸⁸² A⁸⁸³ A⁸⁸⁴ A⁸⁸⁵ A⁸⁸⁶ A⁸⁸⁷ A⁸⁸⁸ A⁸⁸⁹ A⁸⁹⁰ A⁸⁹¹ A⁸⁹² A⁸⁹³ A⁸⁹⁴ A⁸⁹⁵ A⁸⁹⁶ A⁸⁹⁷ A⁸⁹⁸ A⁸⁹⁹ A⁹⁰⁰ A⁹⁰¹ A⁹⁰² A⁹⁰³ A⁹⁰⁴ A⁹⁰⁵ A⁹⁰⁶ A⁹⁰⁷ A⁹⁰⁸ A⁹⁰⁹ A⁹¹⁰ A⁹¹¹ A⁹¹² A⁹¹³ A⁹¹⁴ A⁹¹⁵ A⁹¹⁶ A⁹¹⁷ A⁹¹⁸ A⁹¹⁹ A⁹²⁰ A⁹²¹ A⁹²² A⁹²³ A⁹²⁴ A⁹²⁵ A⁹²⁶ A⁹²⁷ A⁹²⁸ A⁹²⁹ A⁹³⁰ A⁹³¹ A⁹³² A⁹³³ A⁹³⁴ A⁹³⁵ A⁹³⁶ A⁹³⁷ A⁹³⁸ A⁹³⁹ A⁹⁴⁰ A⁹⁴¹ A⁹⁴² A⁹⁴³ A⁹⁴⁴ A⁹⁴⁵ A⁹⁴⁶ A⁹⁴⁷ A⁹⁴⁸ A⁹⁴⁹ A⁹⁵⁰ A⁹⁵¹ A⁹⁵² A⁹⁵³ A⁹⁵⁴ A⁹⁵⁵ A⁹⁵⁶ A⁹⁵⁷ A⁹⁵⁸ A⁹⁵⁹ A⁹⁶⁰ A⁹⁶¹ A⁹⁶² A⁹⁶³ A⁹⁶⁴ A⁹⁶⁵ A⁹⁶⁶ A⁹⁶⁷ A⁹⁶⁸ A⁹⁶⁹ A⁹⁷⁰ A⁹⁷¹ A⁹⁷² A⁹⁷³ A⁹⁷⁴ A⁹⁷⁵ A⁹⁷⁶ A⁹⁷⁷ A⁹⁷⁸ A⁹⁷⁹ A⁹⁸⁰ A⁹⁸¹ A⁹⁸² A⁹⁸³ A⁹⁸⁴ A⁹⁸⁵ A⁹⁸⁶ A⁹⁸⁷ A⁹⁸⁸ A⁹⁸⁹ A⁹⁹⁰ A⁹⁹¹ A⁹⁹² A⁹⁹³ A⁹⁹⁴ A⁹⁹⁵ A⁹⁹⁶ A⁹⁹⁷ A⁹⁹⁸ A⁹⁹⁹ A¹⁰⁰⁰ A¹⁰⁰¹ A¹⁰⁰² A¹⁰⁰³ A¹⁰⁰⁴ A¹⁰⁰⁵ A¹⁰⁰⁶ A¹⁰⁰⁷ A¹⁰⁰⁸ A¹⁰⁰⁹ A¹⁰¹⁰ A¹⁰¹¹ A¹⁰¹² A¹⁰¹³ A¹⁰¹⁴ A¹⁰¹⁵ A¹⁰¹⁶ A¹⁰¹⁷ A¹⁰¹⁸ A¹⁰¹⁹ A¹⁰²⁰ A¹⁰²¹ A¹⁰²² A¹⁰²³ A¹⁰²⁴ A¹⁰²⁵ A¹⁰²⁶ A¹⁰²⁷ A¹⁰²⁸ A¹⁰²⁹ A¹⁰³⁰ A¹⁰³¹ A¹⁰³² A¹⁰³³ A¹⁰³⁴ A¹⁰³⁵ A¹⁰³⁶ A¹⁰³⁷ A¹⁰³⁸ A¹⁰³⁹ A¹⁰⁴⁰ A¹⁰⁴¹ A¹⁰⁴² A¹⁰⁴³ A¹⁰⁴⁴ A¹⁰⁴⁵ A¹⁰⁴⁶ A¹⁰⁴⁷ A¹⁰⁴⁸ A¹⁰⁴⁹ A¹⁰⁵⁰ A¹⁰⁵¹ A¹⁰⁵² A¹⁰⁵³ A¹⁰⁵⁴ A¹⁰⁵⁵ A¹⁰⁵⁶ A¹⁰⁵⁷ A¹⁰⁵⁸ A¹⁰⁵⁹ A¹⁰⁶⁰ A¹⁰⁶¹ A¹⁰⁶² A¹⁰⁶³ A¹⁰⁶⁴ A¹⁰⁶⁵ A¹⁰⁶⁶ A¹⁰⁶⁷ A¹⁰⁶⁸ A¹⁰⁶⁹ A¹⁰⁷⁰ A¹⁰⁷¹ A¹⁰⁷² A¹⁰⁷³ A¹⁰⁷⁴ A¹⁰⁷⁵ A¹⁰⁷⁶ A¹⁰⁷⁷ A¹⁰⁷⁸ A¹⁰⁷⁹ A¹⁰⁸⁰ A¹⁰⁸¹ A¹⁰⁸² A¹⁰⁸³ A¹⁰⁸⁴ A¹⁰⁸⁵ A¹⁰⁸⁶ A¹⁰⁸⁷ A¹⁰⁸⁸ A¹⁰⁸⁹ A¹⁰⁹⁰ A¹⁰⁹¹ A¹⁰⁹² A¹⁰⁹³ A¹⁰⁹⁴ A¹⁰⁹⁵ A¹⁰⁹⁶ A¹⁰⁹⁷ A¹⁰⁹⁸ A¹⁰⁹⁹ A¹¹⁰⁰ A¹¹⁰¹ A¹¹⁰² A¹¹⁰³ A¹¹⁰⁴ A¹¹⁰⁵ A¹¹⁰⁶ A¹¹⁰⁷ A¹¹⁰⁸ A¹¹⁰⁹ A¹¹¹⁰ A¹¹¹¹ A¹¹¹² A¹¹¹³ A¹¹¹⁴ A¹¹¹⁵ A¹¹¹⁶ A¹¹¹⁷ A¹¹¹⁸ A¹¹¹⁹ A¹¹²⁰ A¹¹²¹ A¹¹²² A¹¹²³ A¹¹²⁴ A¹¹²⁵ A¹¹²⁶ A¹¹²⁷ A¹¹²⁸ A¹¹²⁹ A¹¹³⁰ A¹¹³¹ A¹¹³² A¹¹³³ A¹¹³⁴ A¹¹³⁵ A¹¹³⁶ A¹¹³⁷ A¹¹³⁸ A¹¹³⁹ A¹¹⁴⁰ A¹¹⁴¹ A¹¹⁴² A¹¹⁴³ A¹¹⁴⁴ A¹¹⁴⁵ A¹¹⁴⁶ A¹¹⁴⁷ A¹¹⁴⁸ A¹¹⁴⁹ A¹¹⁵⁰ A¹¹⁵¹ A¹¹⁵² A¹¹⁵³ A¹¹⁵⁴ A¹¹⁵⁵ A¹¹⁵⁶ A¹¹⁵⁷ A¹¹⁵⁸ A¹¹⁵⁹ A¹¹⁶⁰ A¹¹⁶¹ A¹¹⁶² A¹¹⁶³ A¹¹⁶⁴ A¹¹⁶⁵ A¹¹⁶⁶ A¹¹⁶⁷ A¹¹⁶⁸ A¹¹⁶⁹ A¹¹⁷⁰ A¹¹⁷¹ A¹¹⁷² A¹¹⁷³ A¹¹⁷⁴ A¹¹⁷⁵ A¹¹⁷⁶ A¹¹⁷⁷ A¹¹⁷⁸ A¹¹⁷⁹ A¹¹⁸⁰ A¹¹⁸¹ A¹¹⁸² A¹¹⁸³ A¹¹⁸⁴ A¹¹⁸⁵ A¹¹⁸⁶ A¹¹⁸⁷ A¹¹⁸⁸ A¹¹⁸⁹ A¹¹⁹⁰ A¹¹⁹¹ A¹¹⁹² A¹¹⁹³ A¹¹⁹⁴ A¹¹⁹⁵ A¹¹⁹⁶ A¹¹⁹⁷ A¹¹⁹⁸ A¹¹⁹⁹ A¹²⁰⁰ A¹²

Take Control of Your E-mail and Calendar With New Shortcuts and Views in Outlook 2010

The screenshot shows the Microsoft Outlook 2010 interface. A dark blue callout box at the top left says "Ignore and Clean Up" with an arrow pointing to the "Ignore" and "Clean Up" buttons in the ribbon. Another dark blue callout box on the left says "Conversation View" with a red arrow pointing to the "Conversations" view selector in the "Arrange By" dropdown. A third dark blue callout box at the bottom left says "Shrink your inbox" with an arrow pointing to the "Shrink" button in the "Conversation View" pane. A yellow callout box at the bottom right says "Click here to minimize" with an arrow pointing to the minimize button in the taskbar. The main window displays an email from Steven Masters titled "Fourth Coffee Financials". The right sidebar shows the calendar for November 2009, with a task list below it.

Ignore and Clean Up

Conversation View
(click to change view)

Shrink your inbox

Click here to minimize

Fourth Coffee Financials

Steven Masters <steven.masters@hotmail.com>

Sent: Fri 9/11/2009 11:43 AM

To: Dev Balasubramanian

Message: Fourth Coffee Financials.xlsx (29 KB)

Dev,

Here's that financial analysis you asked for.

Steven

With Windows Live, you can organize, edit, and share your photos. [Click here.](#)

Calendar

November 2009

Su	Mo	Tu	We	Th	Fr	Sa
25	26	27	28	29	30	31
1	2	3	4	5	6	7
8	9	10	11	12	13	14
15	16	17	18	19	20	21
22	23	24	25	26	27	28
29	30	1	2	3	4	5

Today

Reviewing the proposal; Meet

Team Meeting
4:00 PM - 4:30 PM

Moral Event
4:30 PM - 6:00 PM
Local Gym

Task List

Arrange By: Flag: Due Date

Type a new task

No Date

- confirm if the data ...
- Start looking at th...
- Create a presentati...
- Create a document...
- Start to determine ...
- Sync with Loc and ...
- Which Intl add-ins ...
- Popular Command...
- Ensure that all QAT...
- ACTION ITEMS: **S...

Make Fast, Effective Comparisons from Lists of Data

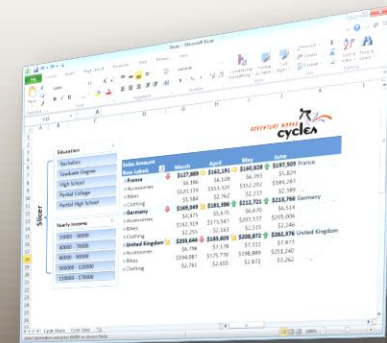
By Using PowerPivot for Excel and New Tools to Visualize Data

Bring Ideas to Life

Challenge: Large volumes of data can be slow and cumbersome to analyze.

New data analysis tools: *PowerPivot for Excel* provides lightning fast query and sorting capabilities with hundreds of million of records. *Sparklines* convey trends for a string of numbers in a single cell.

Potential savings/efficiency gains: Rich data analysis is more easily accessible to more people and can eliminate the need to buy Business Intelligence software that can be costly or difficult to learn to use. Saves time identifying business trends.



**Sparklines and
Conditional
Formatting**
(Click Image)



**PowerPivot for Excel
Add-in**
(Click Image)

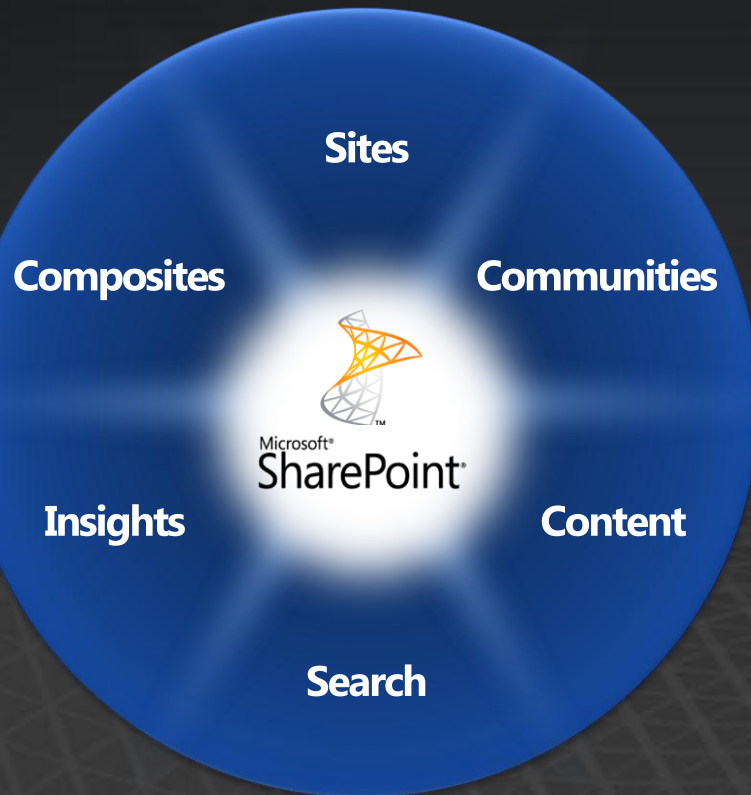
Microsoft SharePoint 2010



Microsoft®
SharePoint® 2010

Microsoft SharePoint 2010

Business Collaboration Platform for the Enterprise and the Web

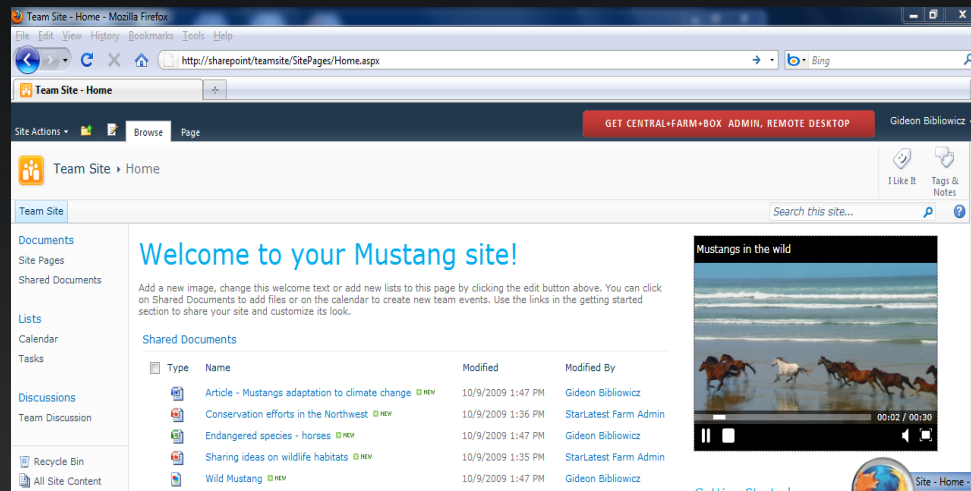


Connect and Empower People

Cut Costs with a Unified Infrastructure

Rapidly Respond to Business Needs

Microsoft SharePoint 2010

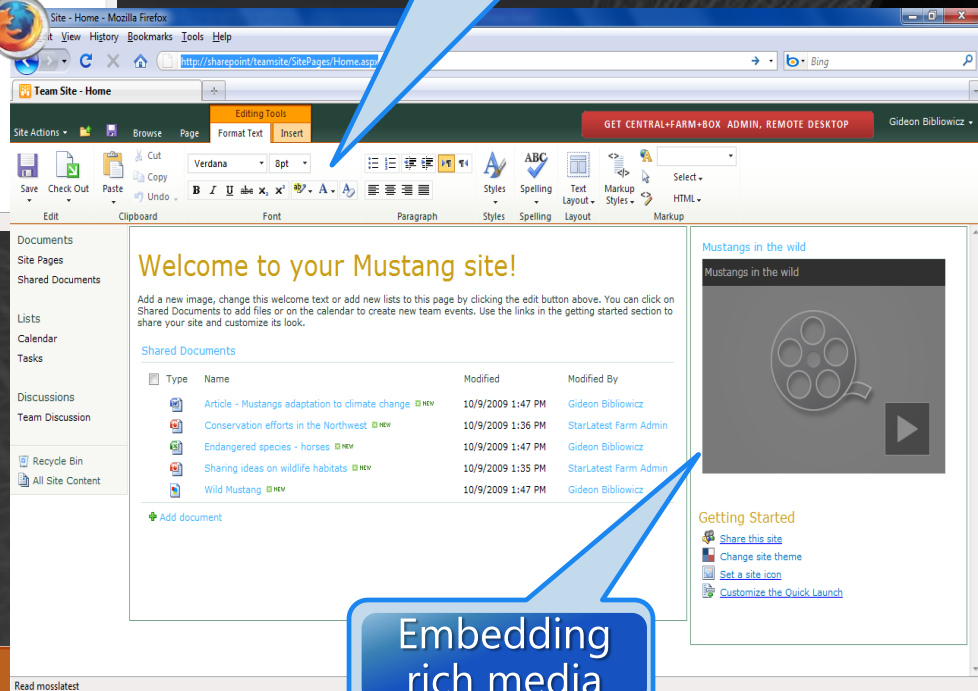


AJAX-based usability

Theming

Cross-browser web access

The Office Ribbon UI in SharePoint !



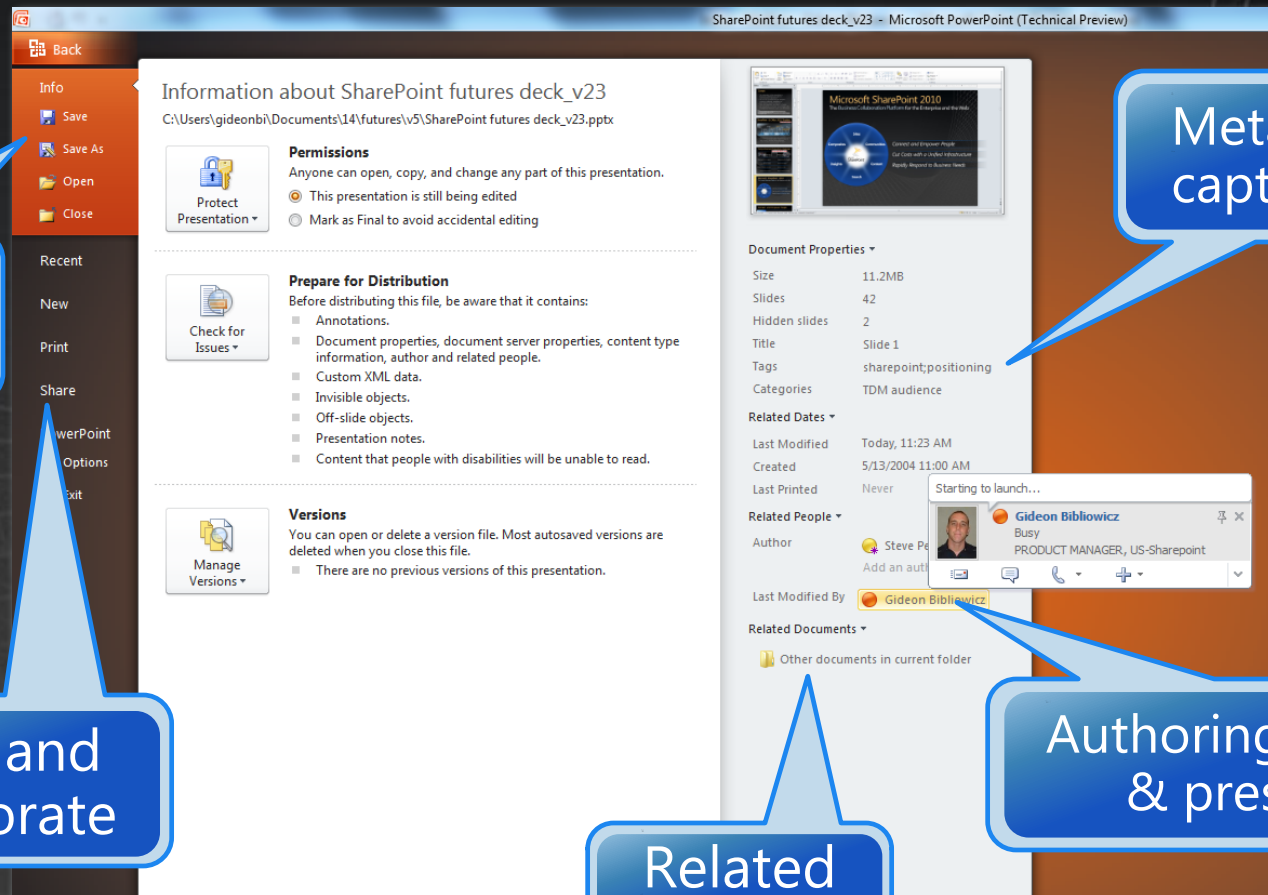
Embedding rich media



Pre-Beta screenshots, subject to change

Microsoft SharePoint 2010

In-context collaboration through the new Office Backstage



Pre-Beta screenshots, subject to change



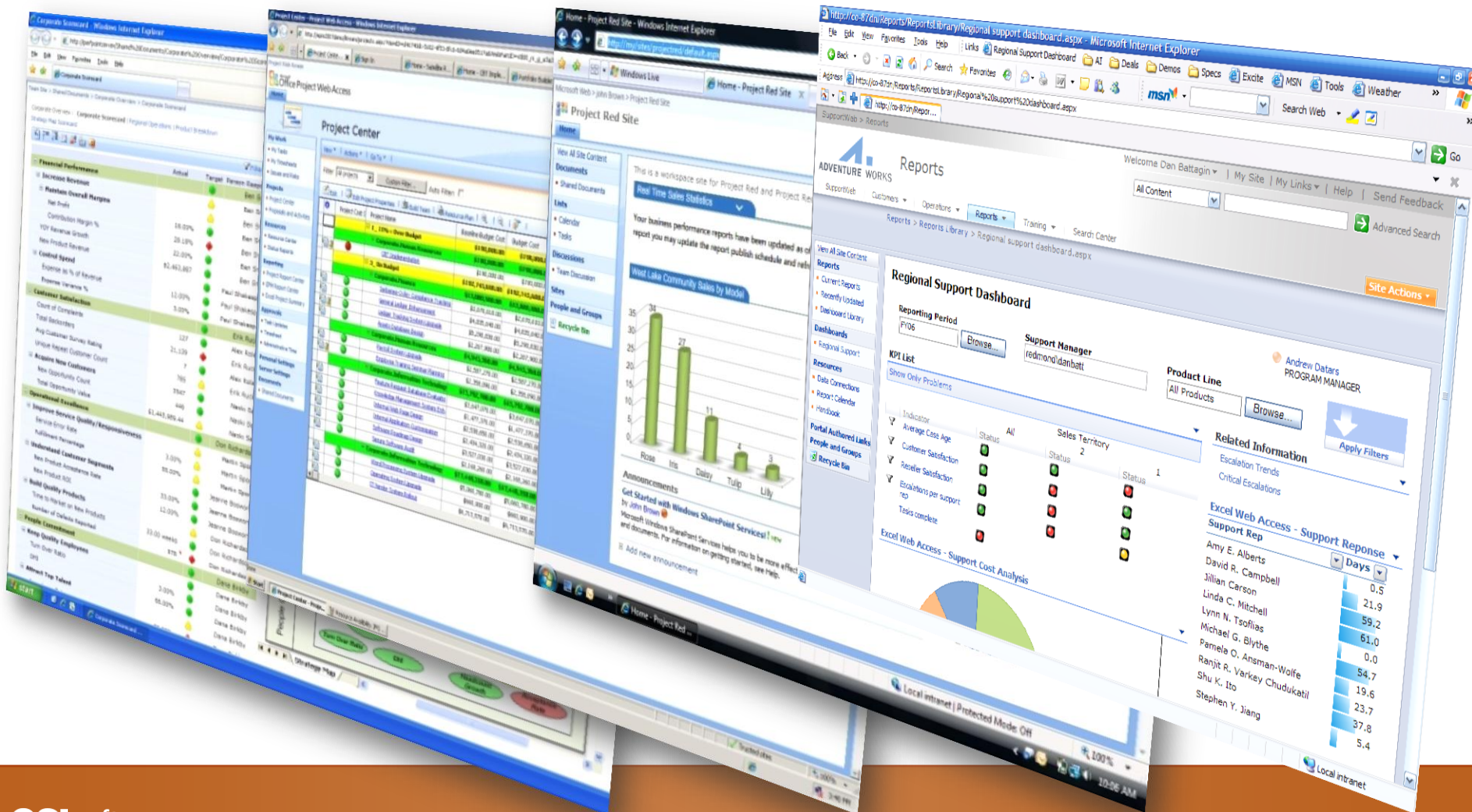
Operational Business Intelligence

Business Intelligence Basics

- It's about Decision Making
 - Every level of management makes decisions – with or without the right data
 - Strategic to Tactical to Operational
 - Personal to Team to Enterprise
 - To have value, BI needs “the **Right Information** at the **Right Time** in the **Right Format**”
- Typical BI data
 - Financial, **O**perational, **S**ales, **H**uman Resources
 - F, S, and H are typically from ERP or other RDB
 - OSIsoft enables the **O**perational data

Familiar Environment Drives Adoption

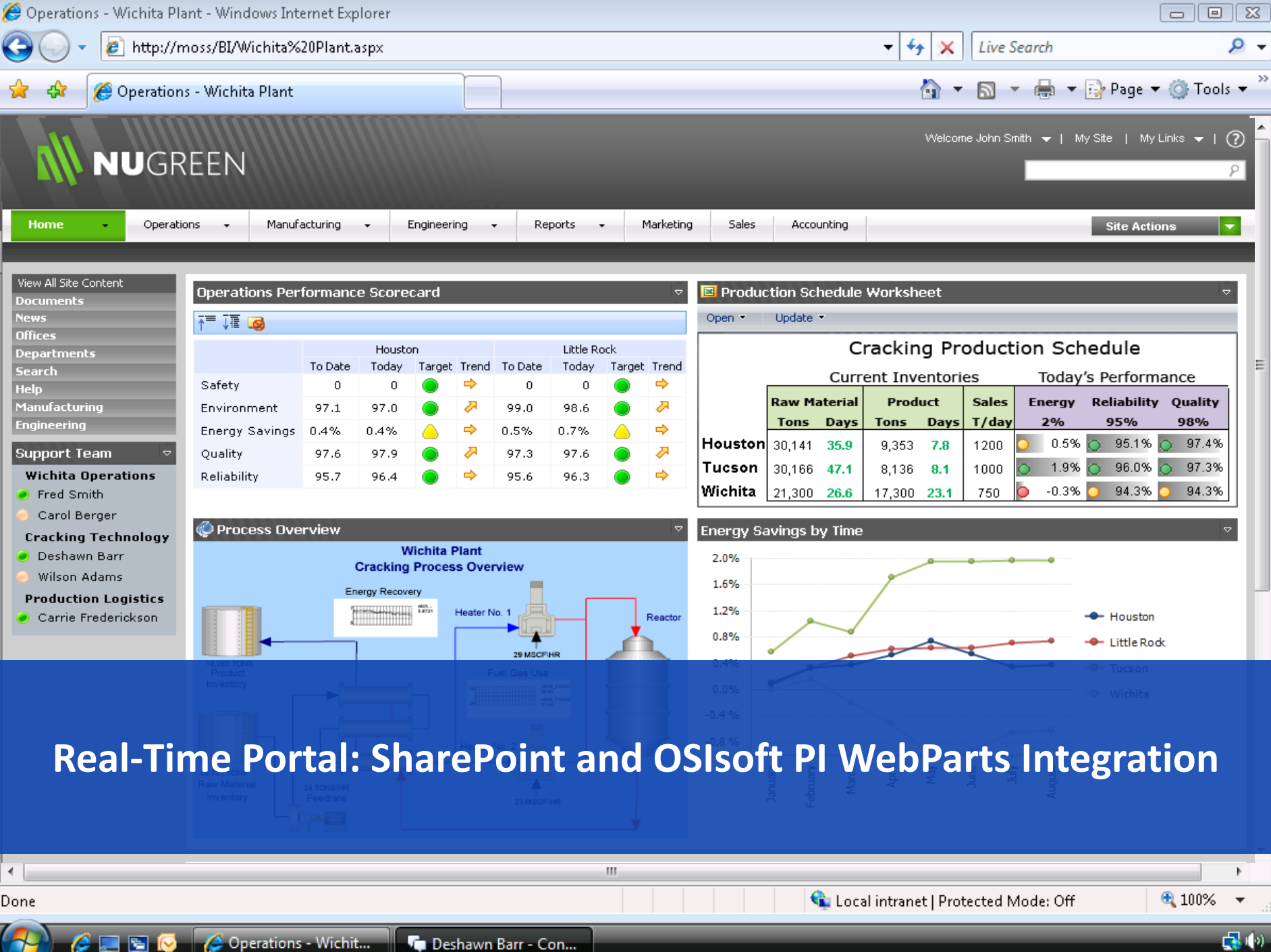
Amplify the impact of your people with the tools you already know



Technology Integration – PI WebParts for SharePoint



PI WebParts Provides Instant Access to Real-Time and Historical Information Through a SharePoint Portal



Operations - Wichita Plant - Windows Internet Explorer

http://moss/BI/Wichita%20Plant.aspx

Live Search

Operations - Wichita Plant

Welcome John Smith | My Site | My Links

Home | Operations | Manufacturing | Engineering | Reports | Marketing | Sales | Accounting | Site Actions

View All Site Content
Documents
News
Offices
Departments
Search
Help
Manufacturing
Engineering
Support Team
Wichita Operations
Fred Smith
Carol Berger
Cracking Technology
Deshawn Barr
Wilson Adams
Production Logistics
Carrie Frederick

Operations Performance Scorecard

	Houston				Little Rock			
	To Date	Today	Target	Trend	To Date	Today	Target	Trend
Safety	0	0			0	0		
Environment	97.1	97.0			99.0	98.6		
Energy Savings	0.4%	0.4%			0.5%	0.7%		
Quality	97.6	97.9			97.3	97.6		
Reliability	95.7	96.4			95.6	96.3		

PI Data Integrated into Microsoft PerformancePoint Services

Cracking Production Schedule

Current Inventories					Today's Performance					
Raw Material	Product	Sales	Energy	Reliability	Quality					
Tons	Days	Tons	Days	T/day	2%	95%	98%			
30,141	35.9	9,353	7.8	1200		0.5%		95.1%		97.4%
30,166	47.1	8,136	8.1	1000		1.9%		96.0%		97.3%
21,300	26.6	17,300	23.1	750		-0.3%		94.3%		94.3%

Savings by Time

Houston
Little Rock

Done

Local intranet | Protected Mode: Off

100%

Operations - Wichit...
Deshawn Barr - Con...

Real-Time Portal: SharePoint and OSIsoft PI WebParts Integration

Operations - Wichita Plant - Windows Internet Explorer

http://moss/BI/Wichita%20Plant.aspx

Live Search

Operations - Wichita Plant

Welcome John Smith | My Site | My Links

Home Operations Manufacturing Engineering Reports Marketing Sales Accounting Site Actions

View All Site Content Documents News Offices Departments Search Help Manufacturing Engineering Support Team

Wichita Operations Fred Smith Carol Berger Cracking Technology Deshawn Barr Wilson Adams Production Logistics Carrie Frederickson

Operations Performance Scorecard

	Houston					To Date
	To Date	Today	Target	Trend		
Safety	0	0	●	→	0	
Environment	97.1	97.0	●	→	99.0	
Energy Savings	0.4%	0.4%	▲	→	0.5%	
Quality	97.6	97.9	●	→	97.3	
Reliability	95.7	96.4	●	→	95.6	

Process Overview

Wichita Plant Cracking Process Overview

Energy Recovery Heater No. 1 29 MSCFHr

Production Schedule Worksheet

Open Update

Cracking Production Schedule

	Current Inventories			Sales T/day	Today's Performance			
	Raw Material Tons	Days	Product Tons		Days	Energy 2%	Reliability 95%	Quality 98%
Houston	30,141	35.9	9,353	7.8	1200	0.5%	95.1%	97.4%
Tucson	30,166	47.1	8,136	8.1	1000	1.9%	96.0%	97.3%
Wichita	21,300	26.6	17,300	23.1	750	-0.3%	94.3%	94.3%

PI Data Displayed Through Excel Services

Real-Time Portal: SharePoint and OSIsoft PI WebParts Integration

Done

Local intranet | Protected Mode: Off 100%

Operations - Wichit... Deshawn Barr - Con...

- View All Site Content
- Documents
- News
- Offices
- Departments
- Search
- Help
- Manufacturing
- Engineering
- Support Team
 - Wichita Operations
 - Fred Smith
 - Carol Berger
 - Cracking Technology
 - Deshawn Barr
 - Wilson Adams
 - Production Logistics
 - Carrie Frederickson

Operations Performance Scorecard

	Houston				Little Rock			
	To Date	Today	Target	Trend	To Date	Today	Target	Trend
Safety	0	0	●	➡	0	0	●	➡
Environment	97.1	97.0	●	➡	99.0	98.6	●	➡
Energy Savings	0.4%	0.4%	●	➡	0.5%	0.7%	●	➡

Production Schedule Worksheet

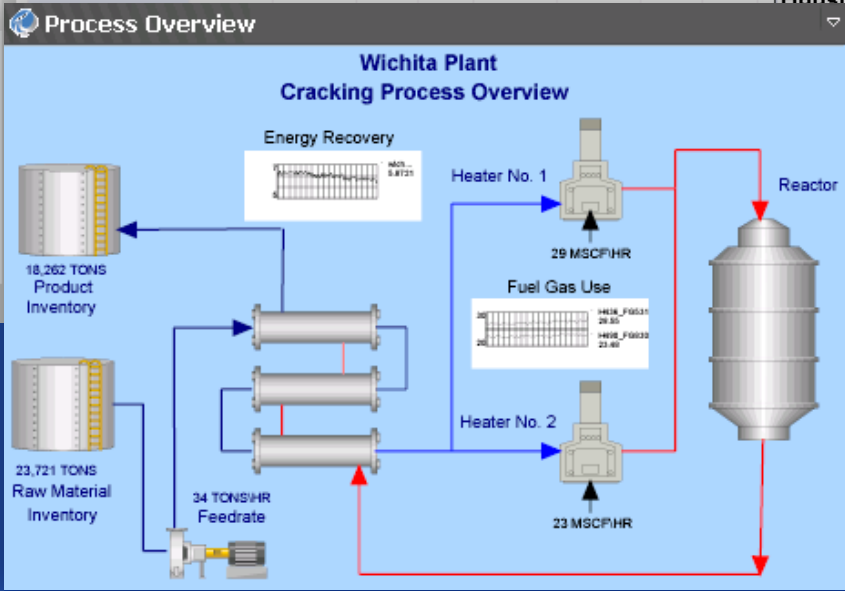
Open
Update

Cracking Production Schedule

Current Inventories

Today's Performance

Raw Material		Product		Sales	Energy	Reliability	Quality
Tons	Days	Tons	Days	T/day	2%	95%	98%
30,141	35.9	9,353	7.8	1200	0.5%	95.1%	97.4%
30,166	47.1	8,136	8.1	1000	1.9%	96.0%	97.3%
21,300	26.6	17,300	23.1	750	-0.3%	94.3%	94.3%



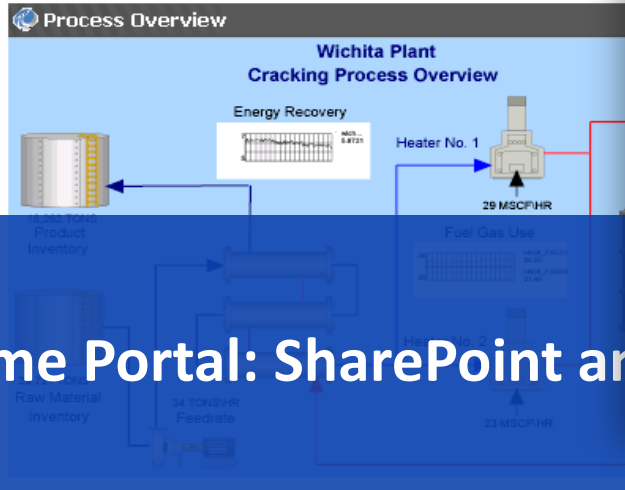
Real-Time Data Visualization

Soft RtWebParts Integration

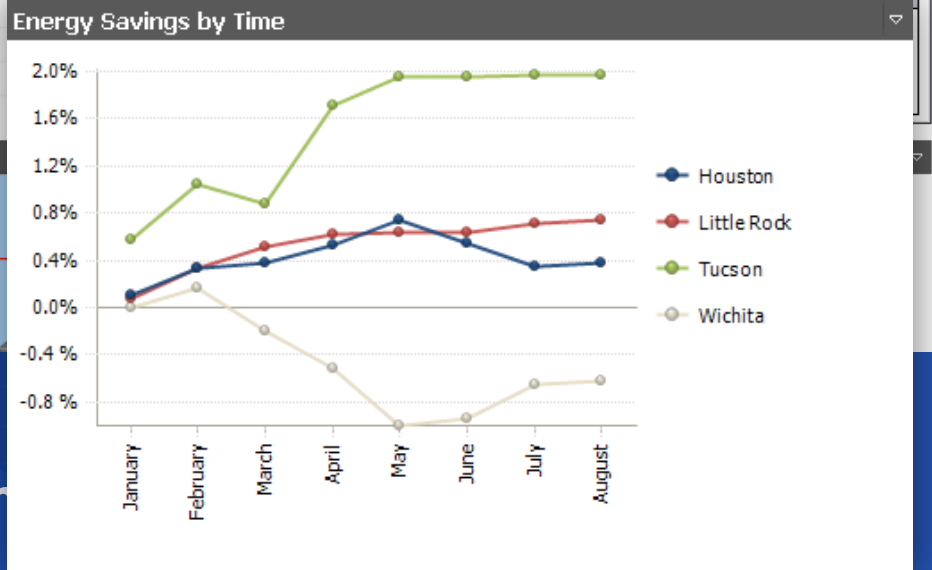
PI Data Visualized through OSIsoft PI WebParts

- View All Site Content
- Documents
- News
- Offices
- Departments
- Search
- Help
- Manufacturing
- Engineering
- Support Team
- Wichita Operations
- Fred Smith
- Carol Berger
- Cracking Technology
- Deshawn Barr
- Wilson Adams
- Production Logistics
- Carrie Frederickson

Operations Performance Scorecard									
	Houston				Little Rock				
	To Date	Today	Target	Trend	To Date	Today	Target	Trend	
Safety	0	0	●	→	0	0	●	→	
Environment	97.1	97.0	●	↗	99.0	98.6	●	↗	
Energy Savings	0.4%	0.4%	▲	→	0.5%	0.7%			
Quality	97.6	97.9	●	↗	97.3	97.6			
Reliability	95.7	96.4	●	→	95.6	96.3			



Production Schedule Worksheet									
Cracking Production Schedule									
Current Inventories			Today's Performance						
Raw Material	Product	Sales	Energy	Reliability	Quality				
Tons	Days	Tons	Days	T/day	2%	95%	98%		



Real-Time Portal: SharePoint and

PI Data Integrated into Microsoft PerformancePoint Services

Operations - Wichita Plant - Windows Internet Explorer

http://moss/BI/Wichita%20Plant.aspx

Live Search

Operations - Wichita Plant

Welcome John Smith | My Site | My Links

Home Operations Manufacturing Engineering Reports Marketing Sales Accounting Site Actions

Support Team

- Wichita Operations
 - Fred Smith
 - Carol Berger
- Cracking Technology
 - Deshawn Barr
 - Wilson Adams
- Production Logistics
 - Carrie Frederickson

Microsoft Communication Server 2007

OSIsoft PI WebPart

Office Communication

Server 2007

Worksheet

Tracking Production Schedule

Product Inventories Today's Performance

Product	Sales	Energy	Reliability	Quality	
Tons	Days	T/day	2%	95%	98%
9,353	7.8	1200	0.5%	95.1%	97.4%
8,136	8.1	1000	1.9%	96.0%	97.3%
7,300	23.1	750	-0.3%	94.3%	94.3%

Houston Little Rock Tucson Wichita

Done Local intranet | Protected Mode: Off 100%

Operations - Wichit... Deshawn Barr - Con...

Operations - Wind Power Portfolio Overview - Windows Internet Explorer

PINotifications: Alert - Alert: OCS Notifications Demo

Live Search

Welcome Danie

All Sites

Reports Marketing Sales Accounting

PINotifications Alert 12:35 PM

- Attention: Failure of Primary Turbine
- Ad-hoc Trend: http://moss/RtWebPartResources/adhocTrendurl.aspx?StartTime=*.1h&EndTime=*&Data=%5C%5CPI%5CNotificationsDemo
- Wind Power: <http://moss/BI/Scenario%20MockUp/Wind%20Power%20Portfolio%20Overview.aspx>

Last message received on 3/26/2009 at 12:35 PM.

RtGauge

KW

RtTrend

Notification Delivery Through Microsoft Office Communication Server 2007

Done

Local intranet | Protected Mode: Off 100%

OSIsoft®

2009

V CAMPUS | LIVE!

Office 2010 – PowerPivot and Self Service BI

```
1. foreach (point in server.PIPoints)
{
    point.Snapshot;
}
2. Dim srv As PISDK.Server
3. Foreach (point in server.PIPoints)
{
    Dim srv A PISDK.Server
    5. if (time_to_market > expected)
    {
        2. Dim srv As PISDK.Server
        3. Foreach (point in server.PIPoints)
        {
            point.Snapshot;
        }
    }
}
```

Business Intelligence Challenges



- **Users have access to relevant information where they need it**
- **Make actionable insight readily accessible to everyone**
- **Optimize utilization of familiar tools**

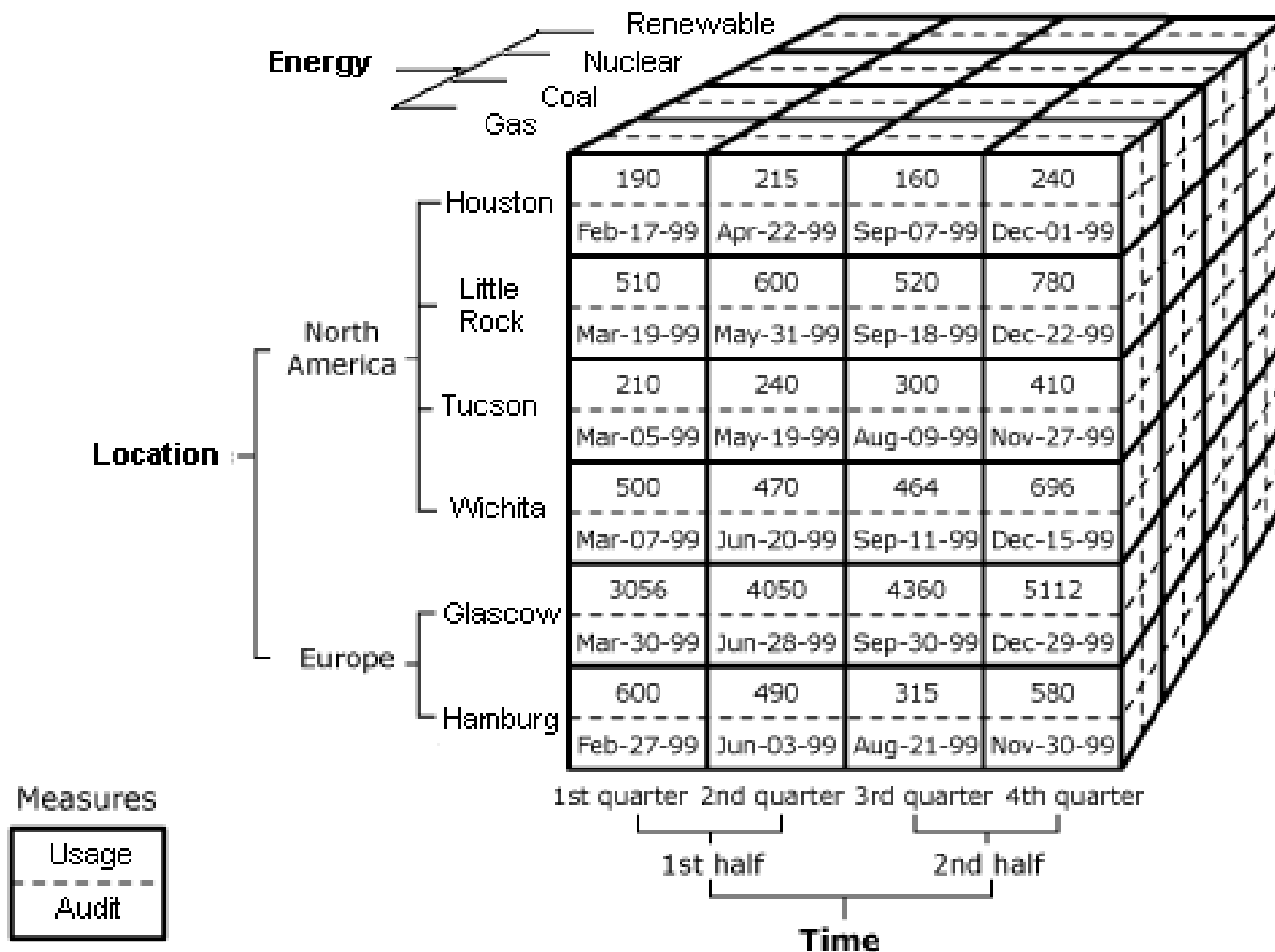


- **Ensure consolidated, sound, and trusted data**
- **Deploy for performance and scale**
- **Efficiently manage enterprise-wide workloads**



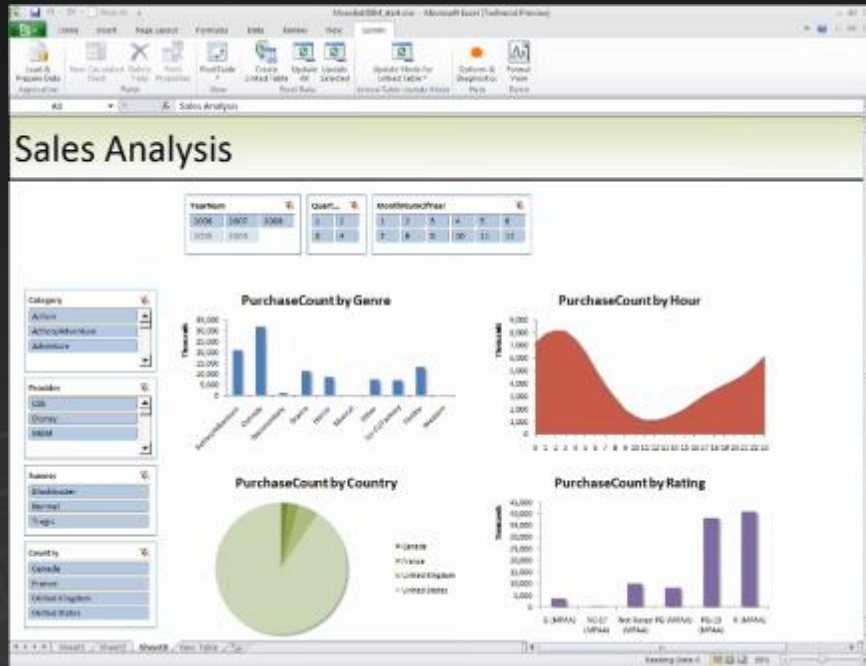
- **Leverage existing investments in MS Office**
- **Break even quickly and ensure positive ROI**

On-Line Analytical Processing (OLAP) Cube

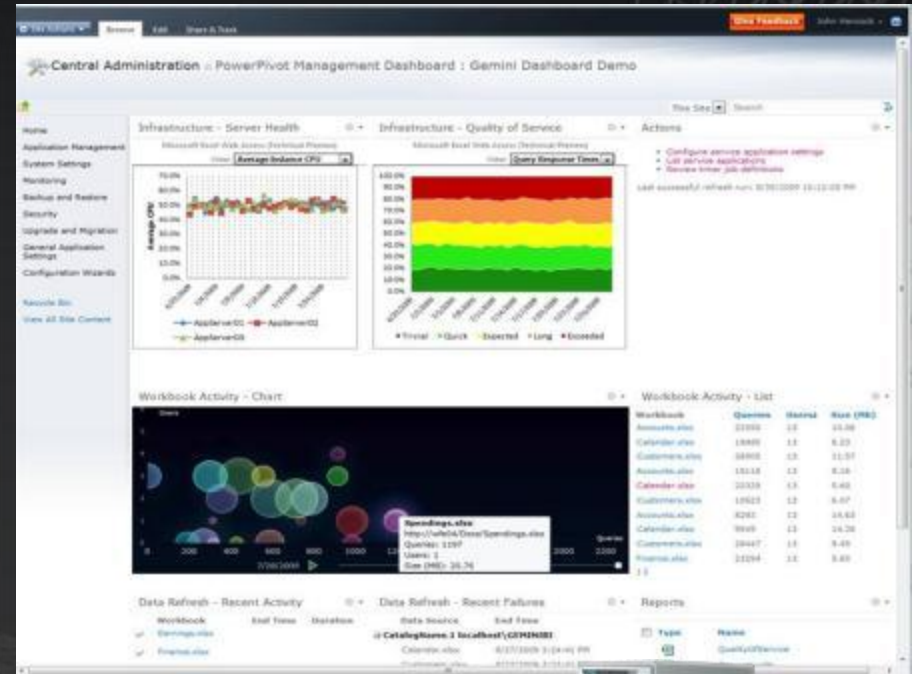


PowerPivot

PowerPivot add-in for Excel



PowerPivot add-in for SharePoint



Microsoft®
Excel 2010

Microsoft®
SharePoint 2010
Microsoft®
SQL Server 2008 R2



OSIsoft®

V

CAMPUS

2009

LIVE!

BI / PowerPivot Demo

Greg Leizerowicz - OSIsoft

```
1. foreach (point in server.PIPoints)
{
    point.Snapshot;
}
2. Dim srv As PISDK.Server
3. Foreach (point in server.PIPoints)
{
    Dim srv A PISDK.Server
    5. if (time_to_market > expected)
    {
        foreach (point in server.PIPoints)
        {
            point.Snapshot;
        }
    }
}
```

Silverlight 4

In Beta NOW : Silverlight 4



Silverlight Momentum

26 months
since launch

500m+
downloads

500,000+
Developers &
Designers

350+
partners in
30
countries

350+
Microsoft
Products &
Websites

Thousands
of Apps
across the
world



Silverlight 4 – New Capabilities

Business Applications

Media

Rich Experiences

Business Applications

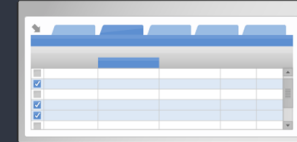
Beyond the Browser

Developer Tools

Printing



Forms Controls



WCF RIA Services



Enhanced Data binding



Internationalization



Managed Extensibility Framework



Silverlight 4 – New Capabilities

Beyond the Browser

Media

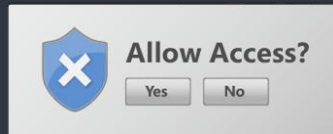
Rich Experiences

Business Applications

Beyond the Browser

Developer Tools

Trusted Applications



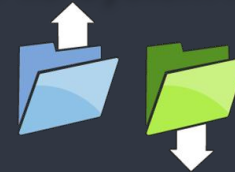
Render HTML within Silverlight



Notifications



Local File System Access



Applications and Devices



Cross Domain Access



Silverlight 4 – New Capabilities

World Class tooling for development and design

Media

Rich Experiences

Business Applications

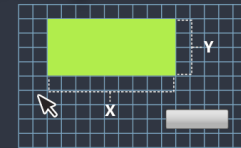
Beyond the Browser

Developer Tools

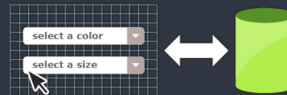
Silverlight Support



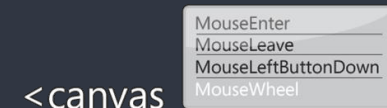
Design Surface



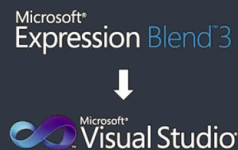
Drag and Drop Data Binding



XAML Intellisense



Import Blend Resources



Sketchflow

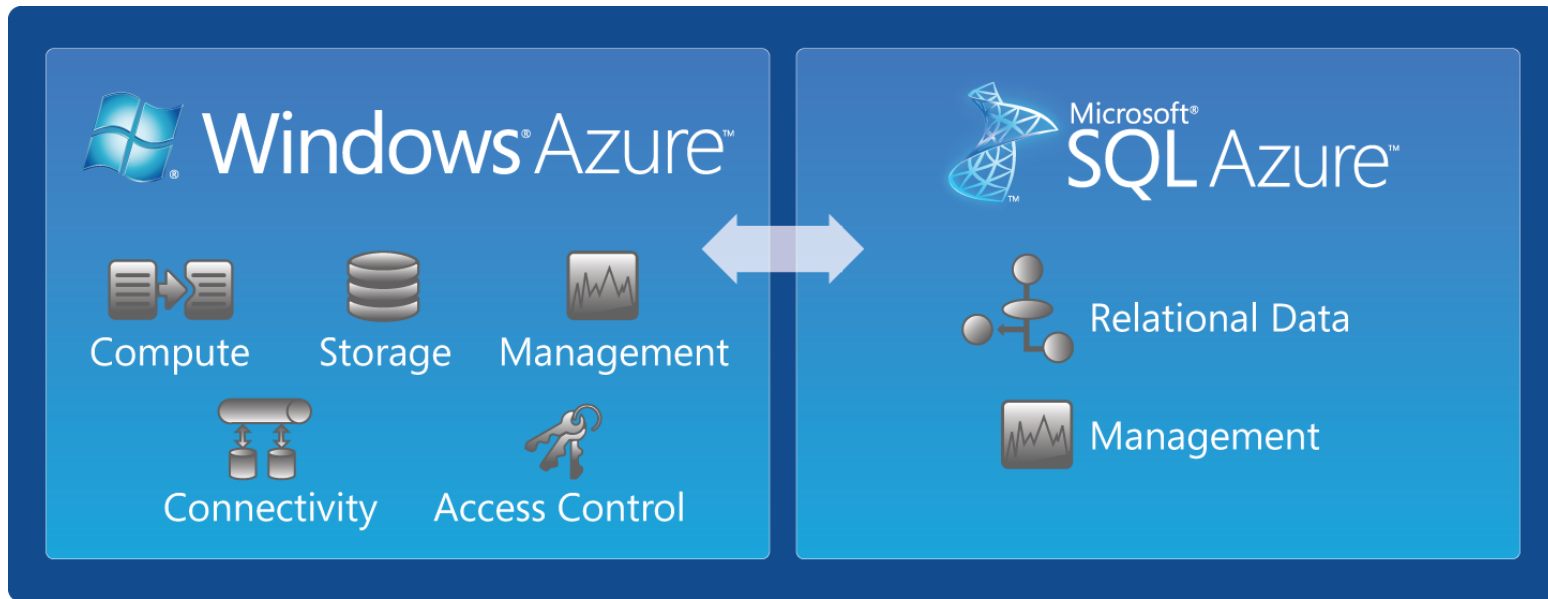


Software + Services Unit the Web

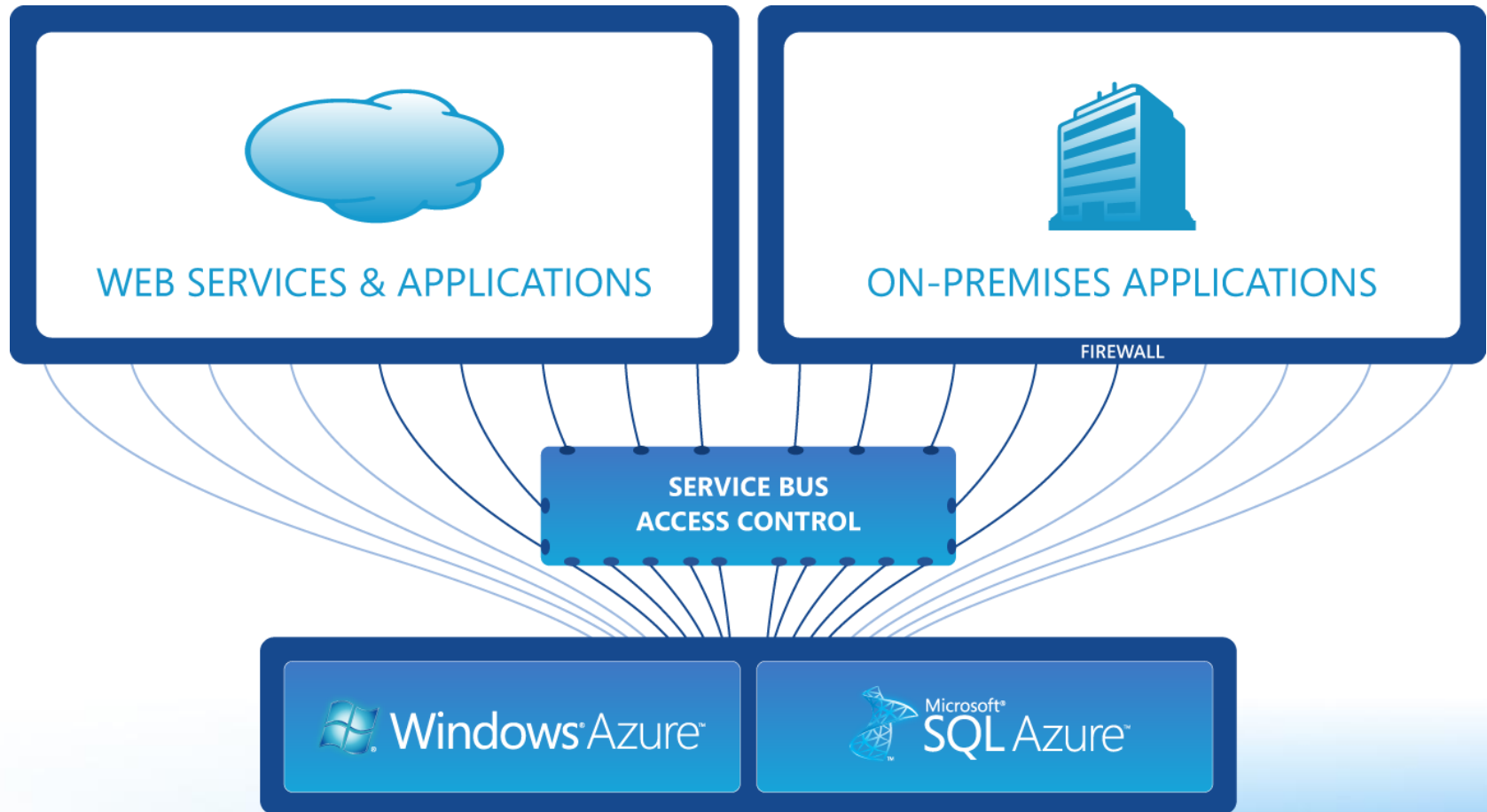


Windows Azure

Windows Azure is an internet-scale cloud services platform hosted in Microsoft data centers around the world, proving a simple, reliable and powerful platform for the creation of web applications and services.



Windows Azure



Technical Roadmap Alignment

- **Office 2010 Integration (Launch Partner)**
 - PI data and events within Office 2010
 - BI – PowerPivot, Excel 2010, SharePoint 2010
 - Office Communication Server CS R2
- **SQL Reporting Services Integration**
 - Visualization, On-Demand Reports, Printing, and Workflow
- **StreamInsight (Launch Partner)**
 - Advanced Analytics and Edge Processing for PI
- **Azure – “PI to the Cloud”**
 - SQL Azure services – Extend customers storage to the cloud
 - True PI Server to the cloud
 - Business to Business interchange
- **Silverlight Visualization**
 - For PI Web Parts and Rich Internet Visualization
- **Search**
 - End to end Search support for PI System

OSIsoft / Microsoft Innovation Program

Common Areas of Interest

- Real-Time Performance Management using role-based visibility
- Energy Management from the datacenter to manufacturing operations
- Continuous Emissions Monitoring and verifying environmental compliance
- Microsoft and OSIsoft in the SAP “Perfect Plant” integrating your ERP systems
- Continuous Improvement driven through collaboration and real-time information
- Condition Based Maintenance, moving from reactive to proactive
- Sustainable IT manage resources for a greener and more profitable future

Executive Eye Opener	Strategy Briefing	Architecture Design Sessions
<ul style="list-style-type: none">• Business Oriented• At Your Location of Choice• Next: Strategy Briefing OR Architecture Design Session	<ul style="list-style-type: none">• Business Oriented• At Local Microsoft Technology Center• Next: Architecture Design Session	<ul style="list-style-type: none">• IT Oriented• At Local Microsoft Technology Center• Next: Proof of Concept or Pilot

Call to Action

- Engage OSIssoft / Microsoft Business Development on specific opportunities (Prabal Acharyya, David Doll, Christian Roller)
- Use vCampus and MSDN for development support and discussion on OSIssoft and MS technologies
- Try StreamInsight Community Technology Preview (CTP) on vCampus (coming soon)
- You can download VMs and Labs from Microsoft Channel9 – <http://channel9.msdn.com>
- Engage with OSIssoft Product Managers to bring feedback on PI future directions on vCampus or ProductManagers@osisoft.com


```
1. point.Snapshot;  
2. Dim srv As PISDK.Server  
3. Fore*%*) (point in server.PIPoints)?!!??  
4. Dim srv A PISDK.Server  
5. if (time_to_market > expected)  
2. Dim srv As PISDK.Server  
3. Fore*%*) (point in server.PIPoints)?!!??  
4. Dim srv A PISDK.Server  
5. if (time_to_market > expected)
```

OSIsoft®

V**CAMPUS**

2009

LIVE!

"where
PI geeks
meet"

THANK YOU.



```
1. foreach (point in server.PIPoints)  
    point.Snapshot;  
2. Dim srv As PISDK.Server  
3. Fore*%*) (point in server.PIPoints)?!!??  
4. Dim srv A PISDK.Server  
5. if (time_to_market > expected)  
    point.Snapshot;  
2. Dim srv As PISDK.Server  
3. Fore*%*) (point in server.PIPoints)?!!??  
4. Dim srv A PISDK.Server  
5. if (time_to_market > expected)
```

© 2009 OSIsoft, LLC. | OSIsoft vCampus Live! | where PI geeks meet