



**OSIsoft®**

**UC2010**

**Real Time Information** — Currency of the New Decade

# PI System 2010 – Overview

John Baier – Director, Product Management

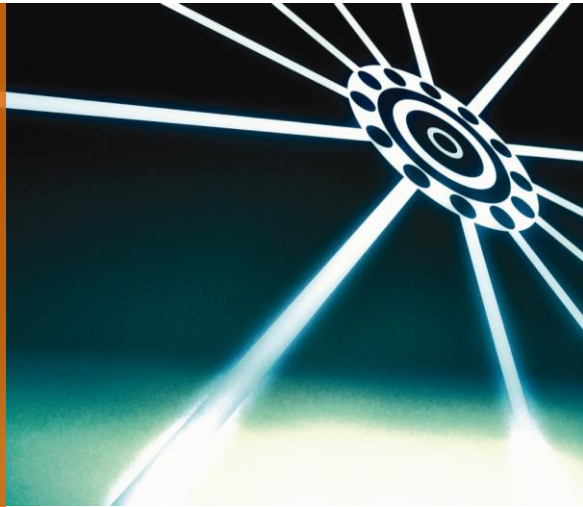
Brian Bostwick – Director, Client Product Development

# Agenda

- Values of PI System 2010
- Demonstration of key new features throughout PI System
- Breadth, see product talks for depth
- PI Server 2010
  - PI Server and Asset Framework
  - PI Analytics and PI Notifications
- PI Clients

# PI System 2010

What are the benefits of PI System 2010?



Simple

Easy to get started, system grows with you



Relevant

Deliver the most important data to right people



Collaborative

Everyone has access to the data, easy to share

# What's New in PI System 2010

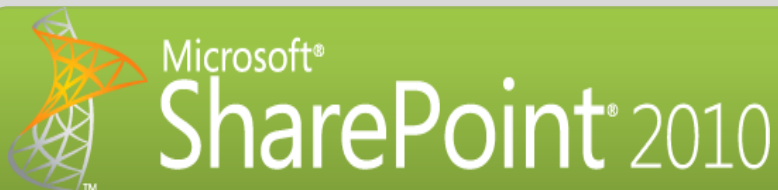
## Business User Experience



## PI Clients

- PI WebParts 2010
- PI DataLink 2010
- PI for Office 2010

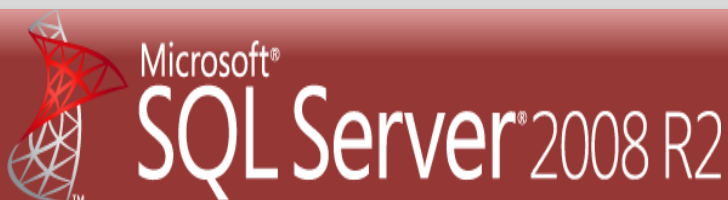
## Business Collaboration Platform



## PI Data Access

- PI OLEDB Enterprise 2010
- PI Web Services 2010
- PI JDBC 2010

## Data Infrastructure and BI Platform



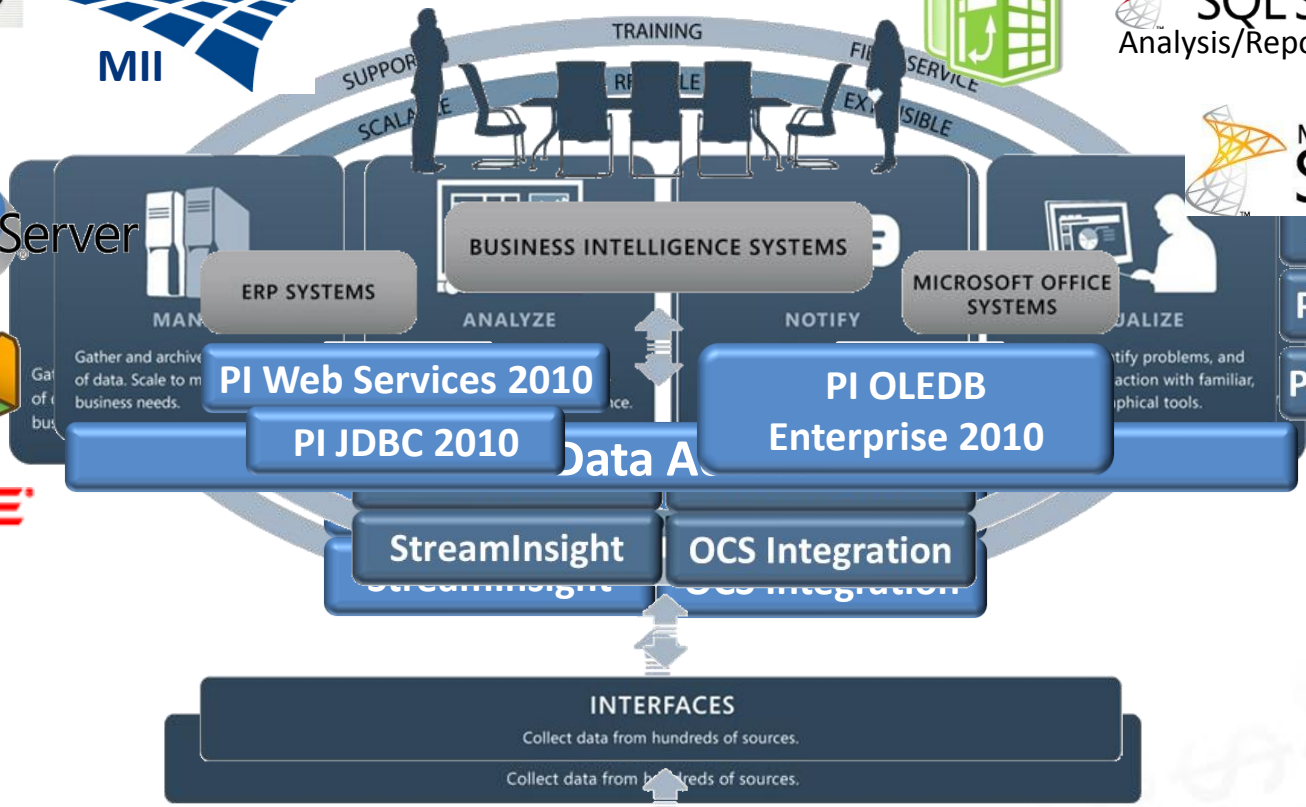
## PI Server

- PI Server 2010
- Assets and Tags
- PI Analytics for StreamInsight

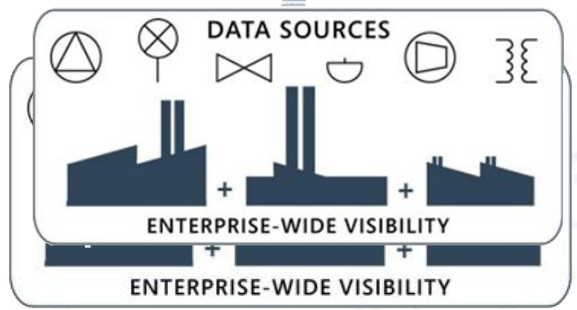




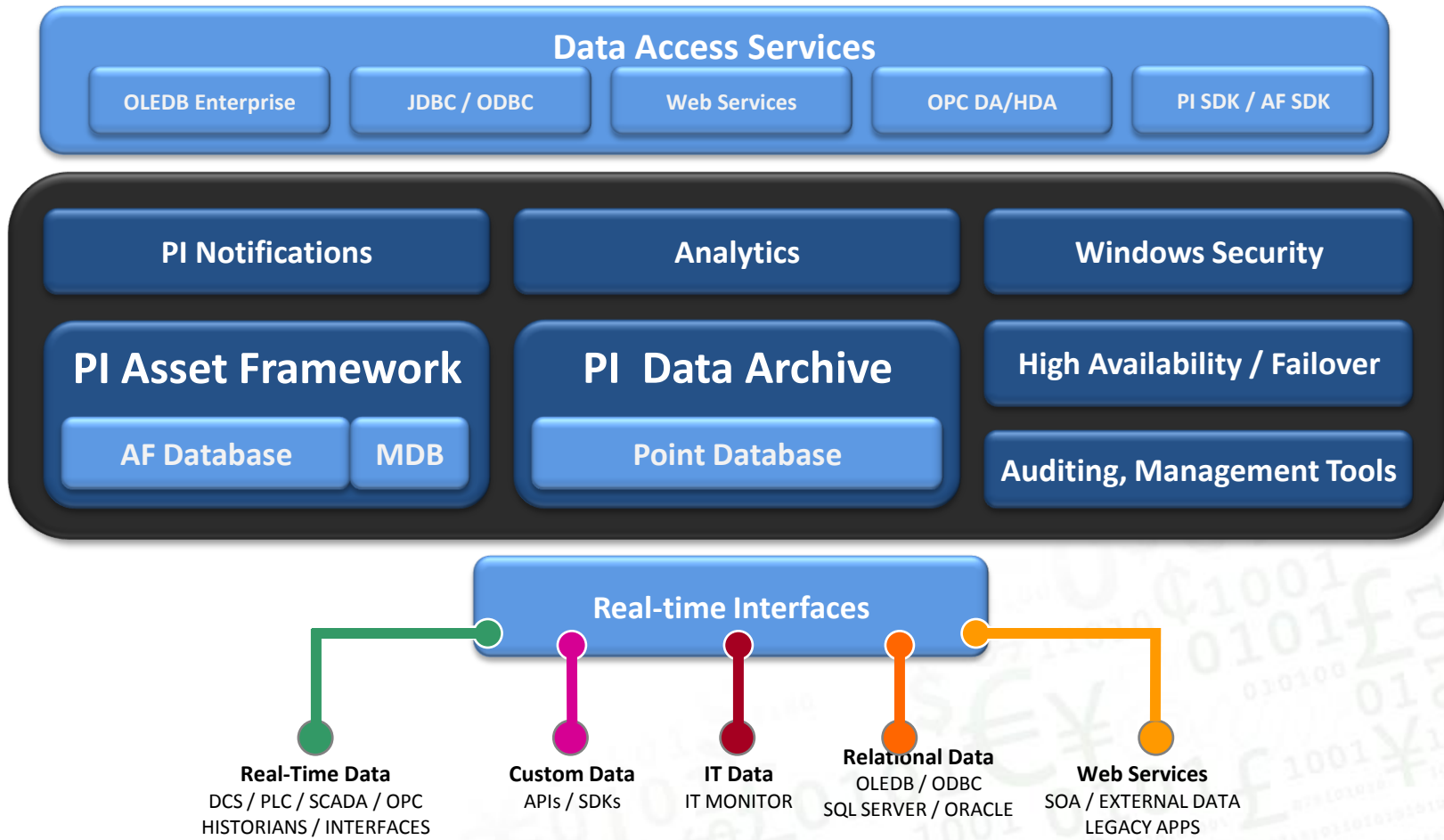
2010



**All Released PI  
Client and Server  
Products**

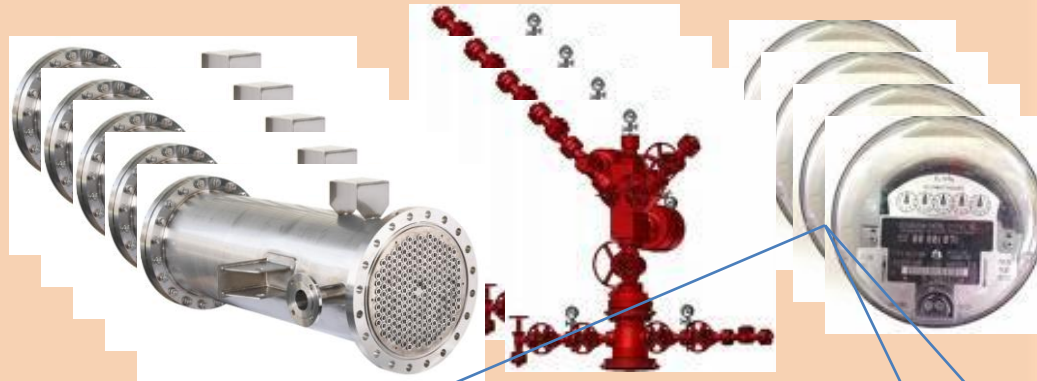
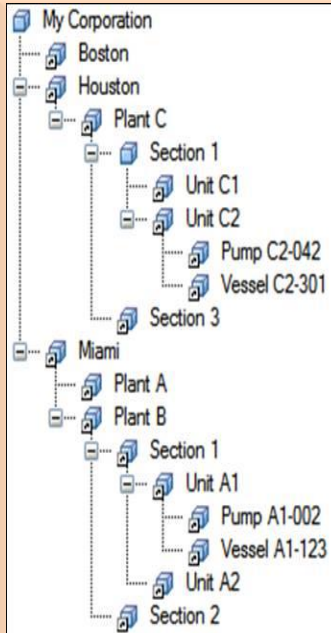


# PI Server 2010



# PI Asset Framework

Asset Information / Metadata



Notifications

Analytics

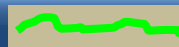
Relational / Non Time Series Data



PI Server



PI Server Collective



Time Series Data

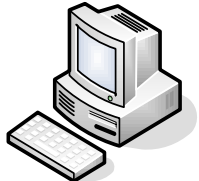


# Migrating Module DB to Asset Framework (AF)

**MDB based Applications**



PI DataLink



IT Monitor

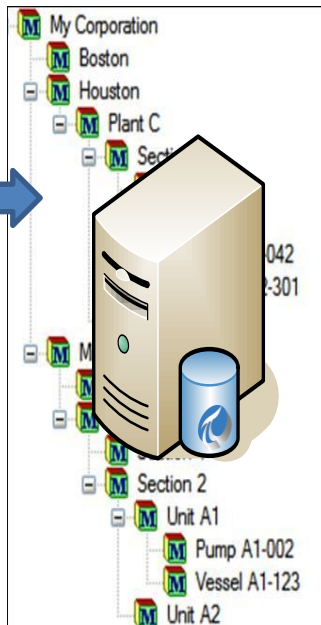


BatchView



PI ACE

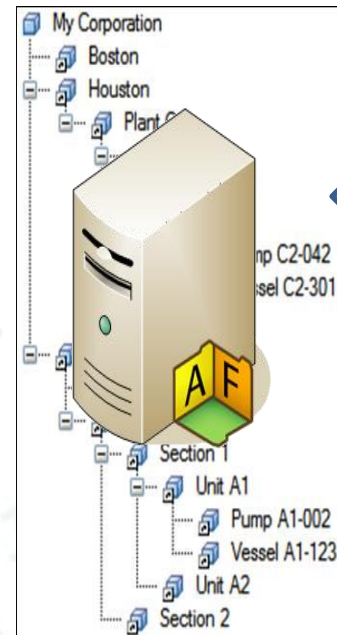
**Module Database**



**PI Asset Link Subsystem**



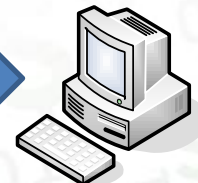
**AF Element Database**



**AF based Applications**



PI WebParts



PI ProcessBook



Custom via Data Access

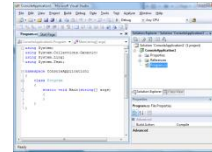


# PI Server 2010 and AF Product Theatre Sessions

- PI Server 2010: AF Inside
- Best Practices for Securing your PI System
- Using Templates to Speed Up Configuration of Your PI System

# PI & StreamInsight Platform

StreamInsight Application  
Development

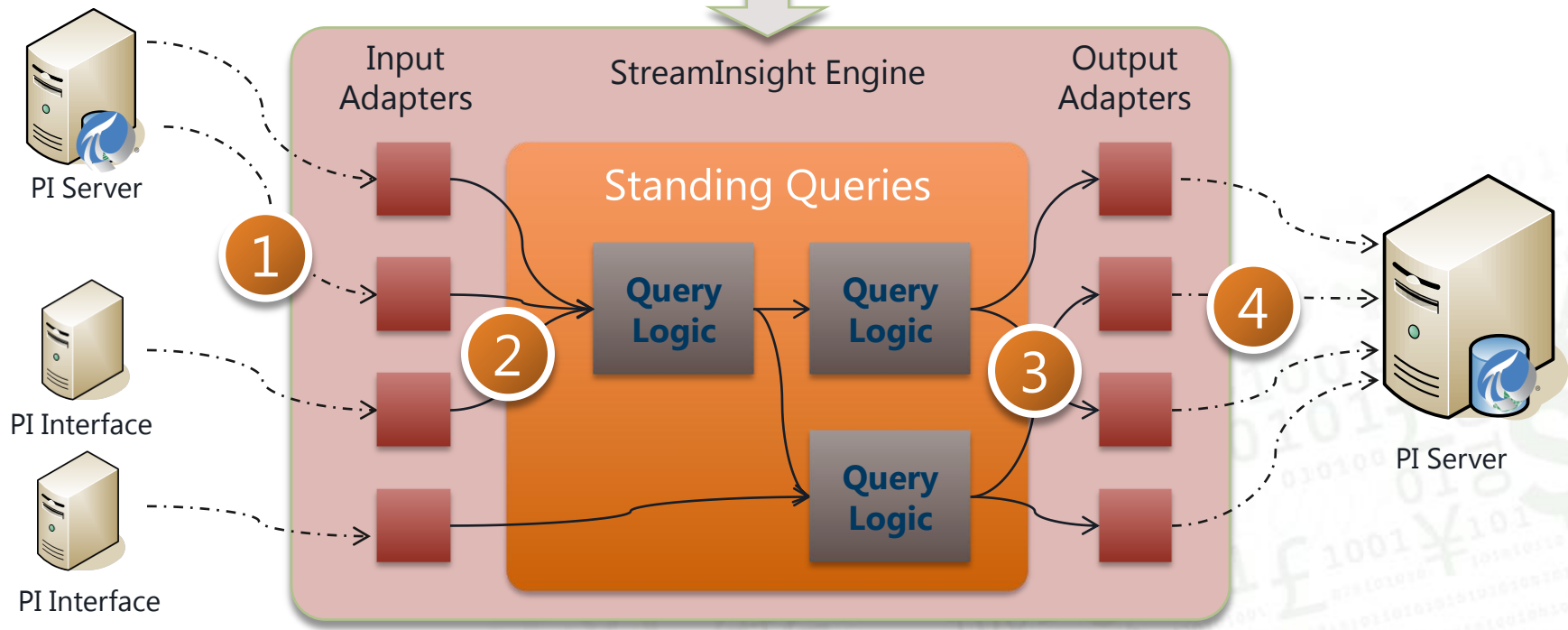


.NET  
C#  
LINQ

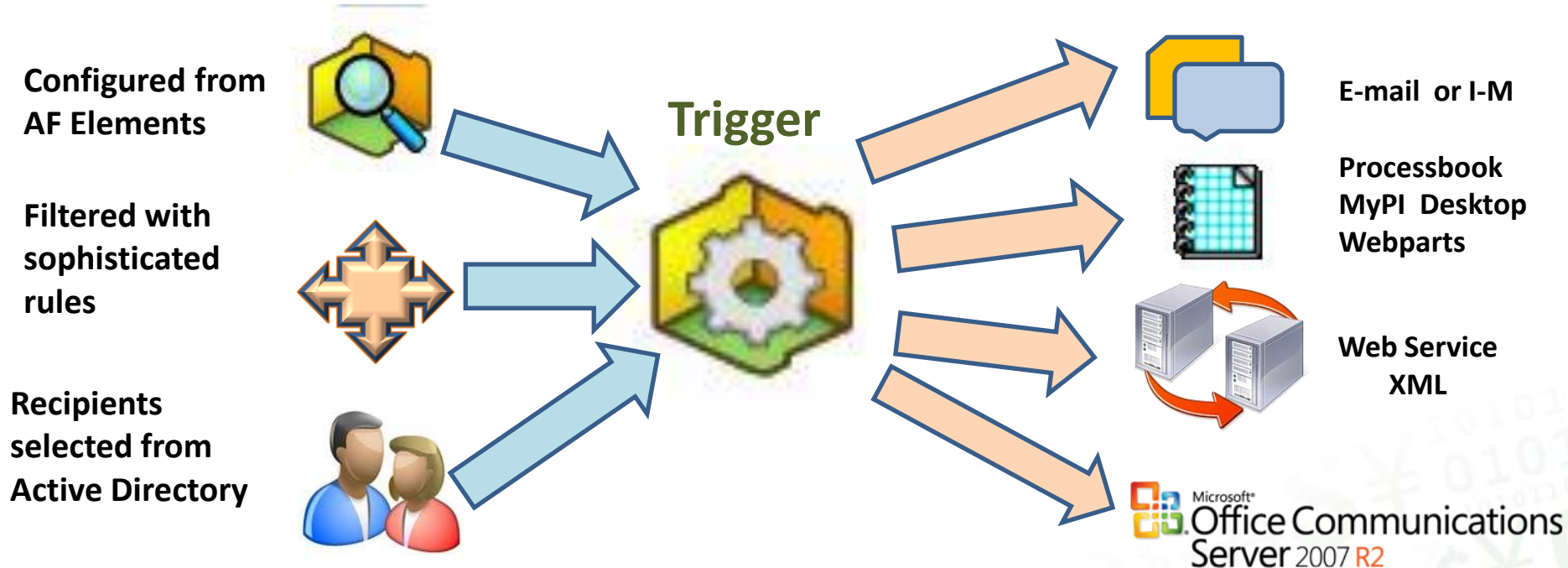
StreamInsight Application at Runtime

Event sources

Event targets



# PI Notifications: The Power of Templates...



Define information once

- Fewer errors
- Automatically in sync
- Maintenance can scale

Override where necessary

- Change time rule
- Define specific content
- Add/modify subscribers

**Go See: Using Templates to Speed Up Configuration of Your PI System**

# Demo

## PI Notifications



# PI Analytics

## Product Theatre Sessions

- What's New in PI Analytics and Notifications
- Using Templates to Speed Up Configuration of Your PI System

# PI Data Access: The 2010 Wave



Microsoft®  
BizTalk® Server



Microsoft®  
SQL Server®  
Analysis/Reporting Services



TIBCO  
The Power of Now™



Microsoft®  
SharePoint®

ORACLE®

PI JDBC  
2010

PI Web  
Services 2010

PI OLEDB  
Enterprise 2010

PI OPC DA/HDA  
Server 2010

OSIsoft SDKs



Asset Information / Metadata

Notifications

Event Frames

Relational / Non Time Series Data



PI Server



PI Server Collective

Time Series Data

# PI Data Access

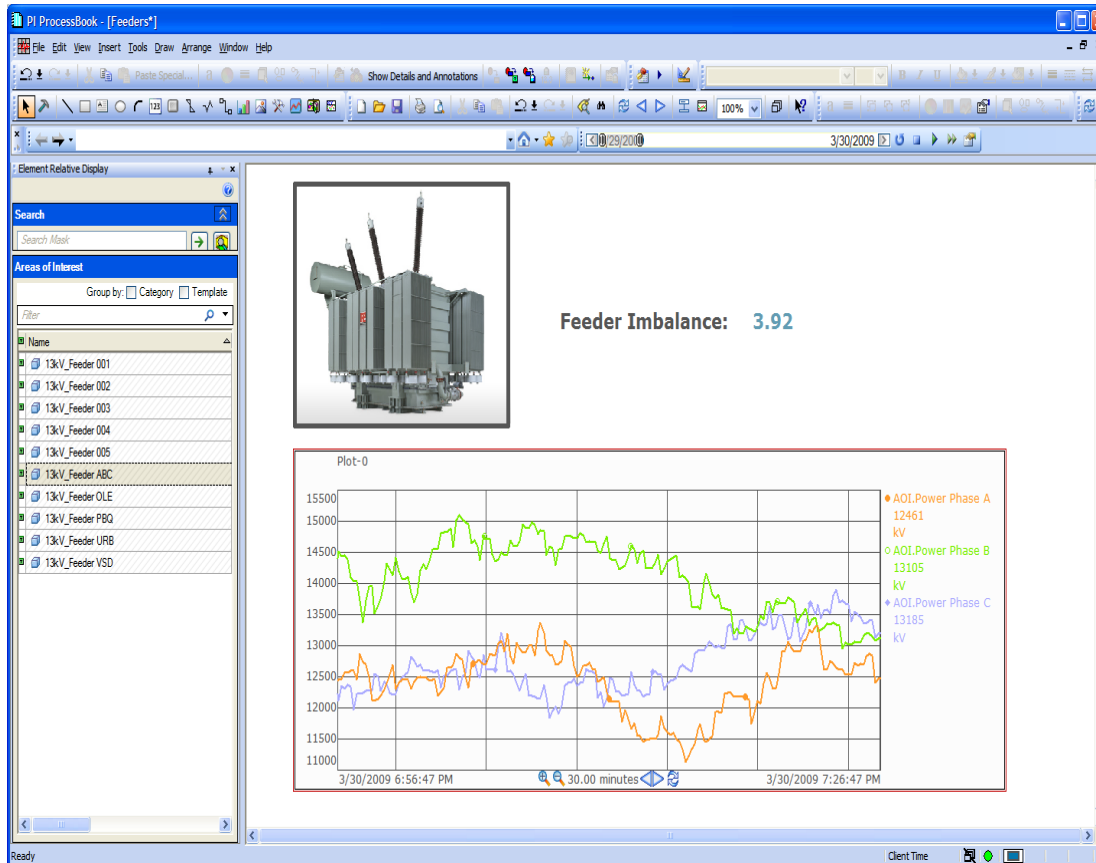
## Product Theatre Sessions

- What's New with PI Data Access 2010 - PI Web Services, PI JDBC, PI OLEDB, and PI OPC UA
- PI Data Access and Enterprise Integration

# PI Clients



# ProcessBook 3.2: Element Relative Displays



**Go See: Recent Productivity  
Enhancements to PI ProcessBook**

# ProcessBook 3.2

Browsing forward and backwards  
Permanent books mark of favorites

Playback

Troubleshoot  
problems by  
re-playing a display

Communicator  
IM, Email Contacts  
Easily send a PB  
screenshot

**Go See: Recent Productivity  
Enhancements to PI ProcessBook**

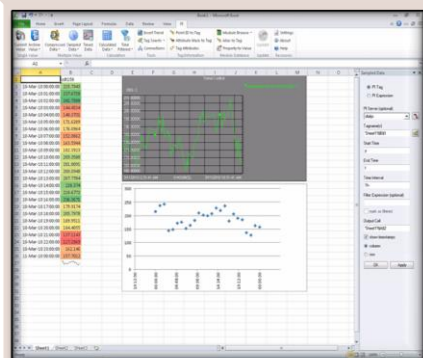
# Demo

## PI ProcessBook

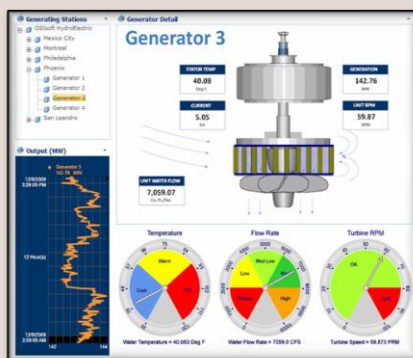
### Element Relative Displays

# PI for Office 2010

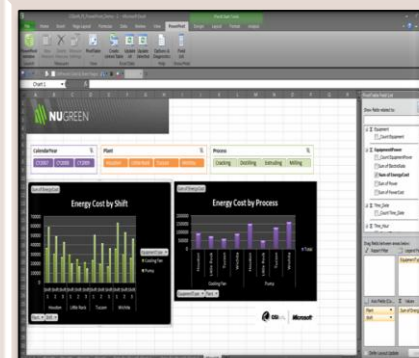
## Release Date: 2Q 2010



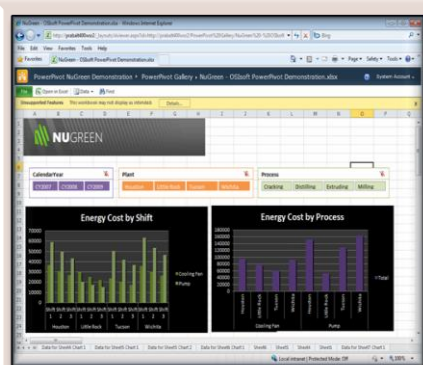
PI DataLink for Excel  
2010



PI WebParts for  
SharePoint 2010



PI and PowerPivot for  
Excel 2010

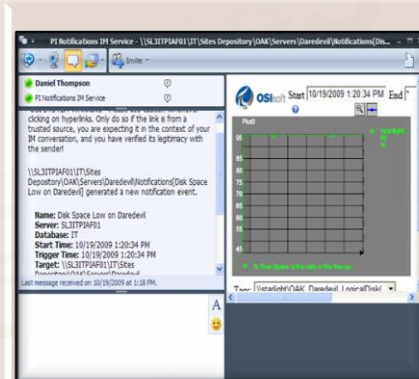


PI and PowerPivot for  
SharePoint 2010

PI OLEDB  
Enterprise 2010

PI Web Services  
2010

PI Data Access  
Technologies



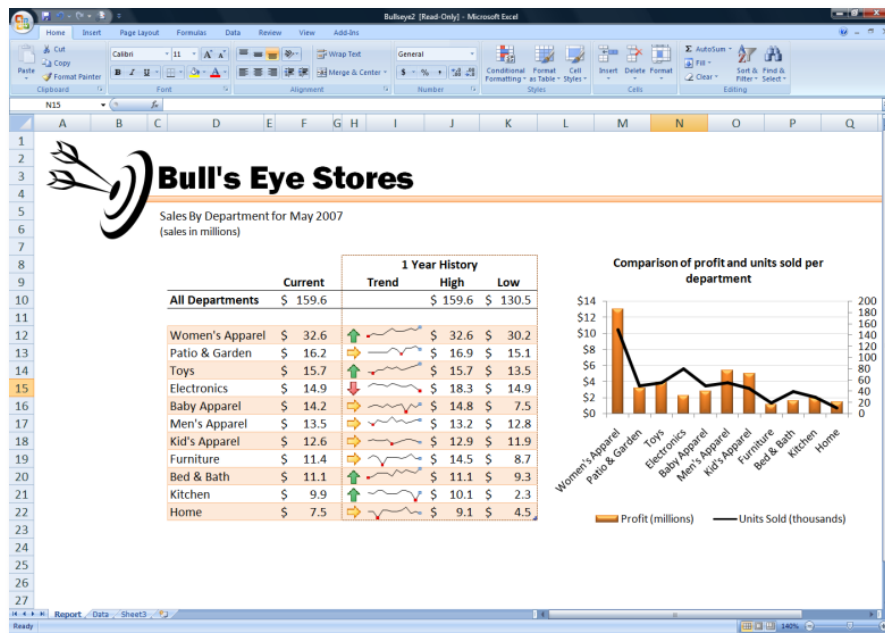
PI Notifications 1.1  
OCS R2 Delivery Channel



# Powerful Personal Analysis Tools

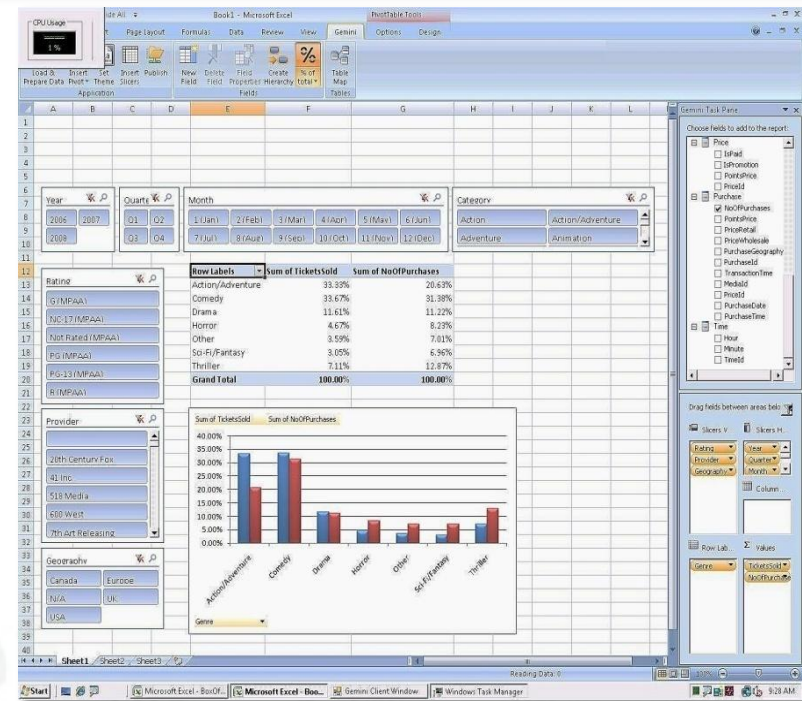
## Drive personal productivity and insight

Microsoft®  
Excel 2010



Improved formatting and charts

Easier navigation with Slicers

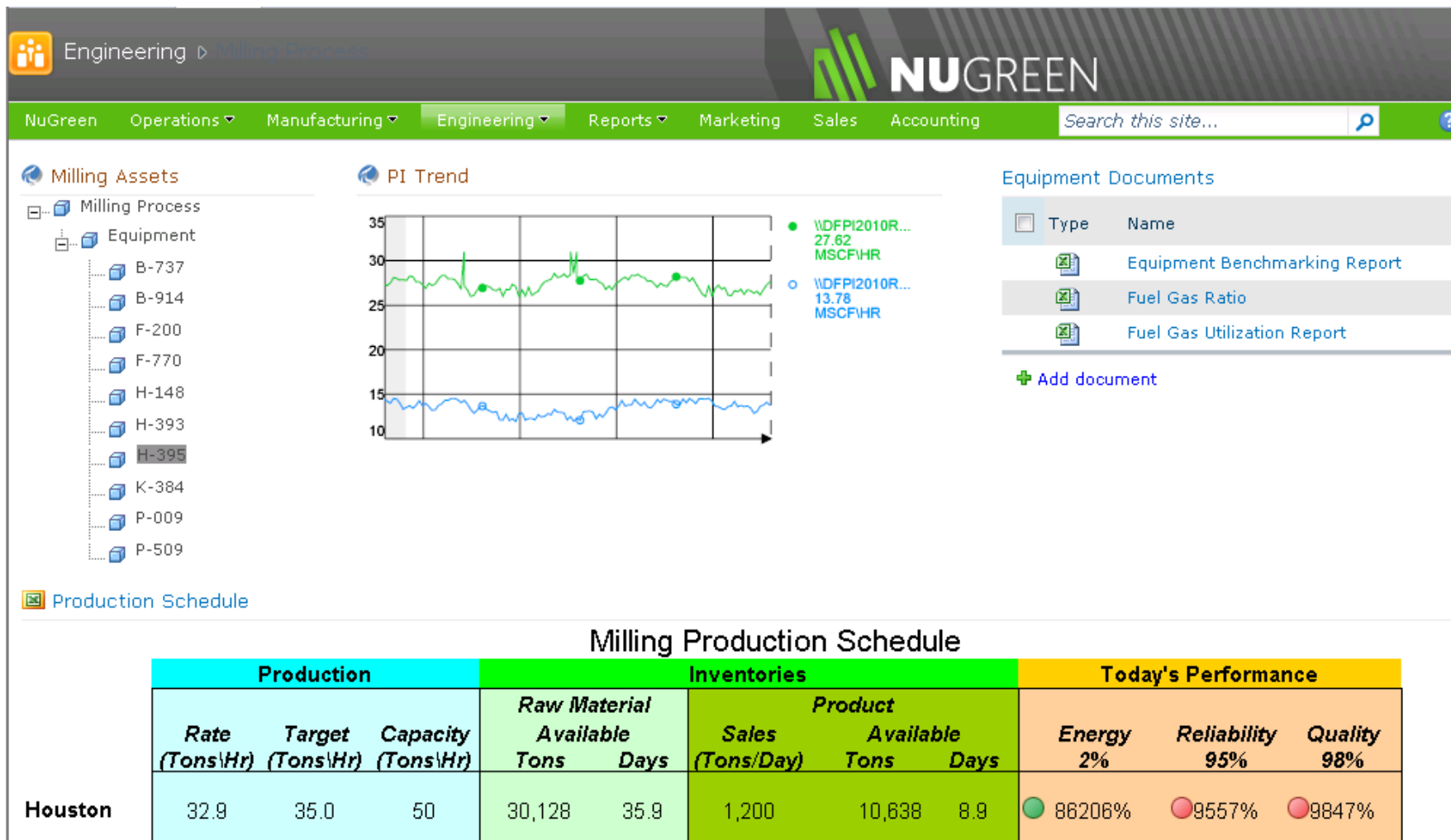


# Demo

## PI DataLink 2010

# PI for Office 2010

## PI Web Parts 2010 for SharePoint 2010



# Demo

## PI WebParts 2010

[Asset Relative Display](#)

[Asset Search](#)

[Integration with Query Strings](#)

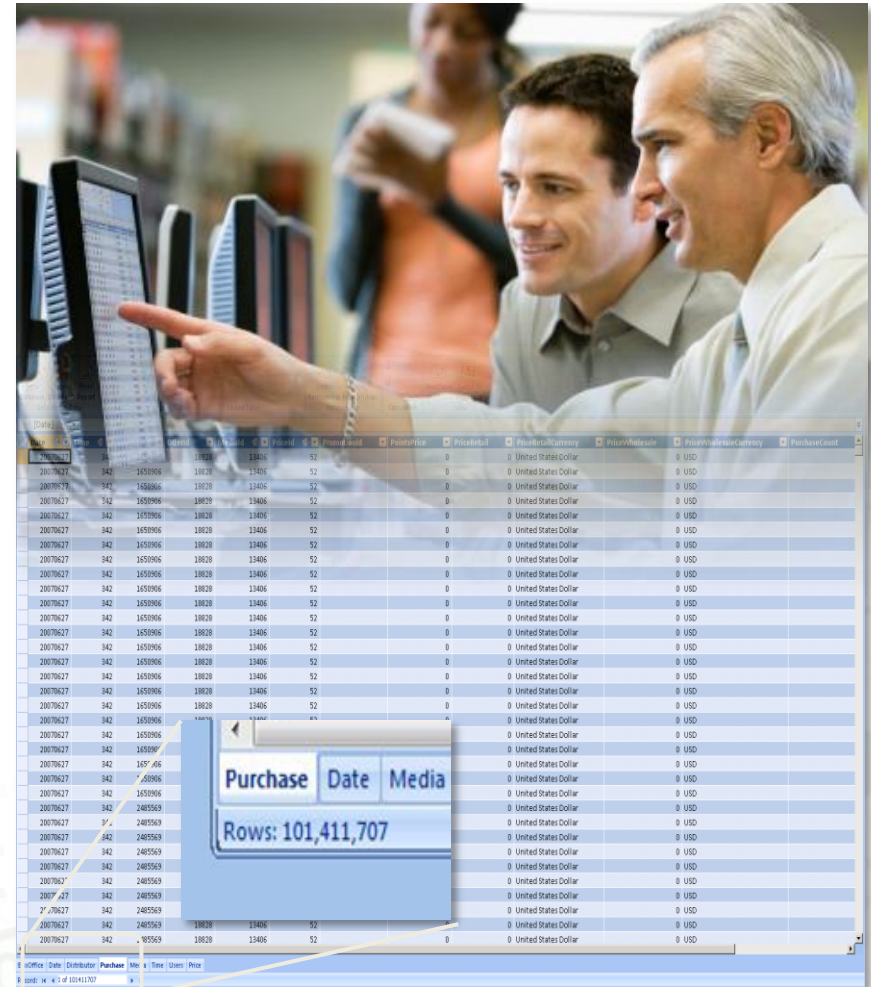


# Empowering the End User

## Introducing PowerPivot for Excel

Microsoft®  
Excel 2010

- Enable users to perform self-service analysis and intuitively build their own BI solutions
- Allow users to interactively explore and perform calculations on large data sets
- Integrate data from multiple sources
- Minimize dependence on IT support



The image shows two men in a professional setting looking at a large Excel spreadsheet on a monitor. The spreadsheet displays a large table of data with columns for Date, Purchase, and Media. A PowerPivot data model overlay is visible, showing the total number of rows in the data model as 101,411,707. The overlay also includes a 'Purchase Date Media' section.

| Date       | Purchase | Media   |
|------------|----------|---------|
| 2007/1/1   | 342      | 1500006 |
| 2007/1/2   | 342      | 1500006 |
| 2007/1/3   | 342      | 1500006 |
| 2007/1/4   | 342      | 1500006 |
| 2007/1/5   | 342      | 1500006 |
| 2007/1/6   | 342      | 1500006 |
| 2007/1/7   | 342      | 1500006 |
| 2007/1/8   | 342      | 1500006 |
| 2007/1/9   | 342      | 1500006 |
| 2007/1/10  | 342      | 1500006 |
| 2007/1/11  | 342      | 1500006 |
| 2007/1/12  | 342      | 1500006 |
| 2007/1/13  | 342      | 1500006 |
| 2007/1/14  | 342      | 1500006 |
| 2007/1/15  | 342      | 1500006 |
| 2007/1/16  | 342      | 1500006 |
| 2007/1/17  | 342      | 1500006 |
| 2007/1/18  | 342      | 1500006 |
| 2007/1/19  | 342      | 1500006 |
| 2007/1/20  | 342      | 1500006 |
| 2007/1/21  | 342      | 1500006 |
| 2007/1/22  | 342      | 1500006 |
| 2007/1/23  | 342      | 1500006 |
| 2007/1/24  | 342      | 1500006 |
| 2007/1/25  | 342      | 1500006 |
| 2007/1/26  | 342      | 1500006 |
| 2007/1/27  | 342      | 1500006 |
| 2007/1/28  | 342      | 1500006 |
| 2007/1/29  | 342      | 1500006 |
| 2007/1/30  | 342      | 1500006 |
| 2007/1/31  | 342      | 1500006 |
| 2007/2/1   | 342      | 1500006 |
| 2007/2/2   | 342      | 1500006 |
| 2007/2/3   | 342      | 1500006 |
| 2007/2/4   | 342      | 1500006 |
| 2007/2/5   | 342      | 1500006 |
| 2007/2/6   | 342      | 1500006 |
| 2007/2/7   | 342      | 1500006 |
| 2007/2/8   | 342      | 1500006 |
| 2007/2/9   | 342      | 1500006 |
| 2007/2/10  | 342      | 1500006 |
| 2007/2/11  | 342      | 1500006 |
| 2007/2/12  | 342      | 1500006 |
| 2007/2/13  | 342      | 1500006 |
| 2007/2/14  | 342      | 1500006 |
| 2007/2/15  | 342      | 1500006 |
| 2007/2/16  | 342      | 1500006 |
| 2007/2/17  | 342      | 1500006 |
| 2007/2/18  | 342      | 1500006 |
| 2007/2/19  | 342      | 1500006 |
| 2007/2/20  | 342      | 1500006 |
| 2007/2/21  | 342      | 1500006 |
| 2007/2/22  | 342      | 1500006 |
| 2007/2/23  | 342      | 1500006 |
| 2007/2/24  | 342      | 1500006 |
| 2007/2/25  | 342      | 1500006 |
| 2007/2/26  | 342      | 1500006 |
| 2007/2/27  | 342      | 1500006 |
| 2007/2/28  | 342      | 1500006 |
| 2007/2/29  | 342      | 1500006 |
| 2007/3/1   | 342      | 1500006 |
| 2007/3/2   | 342      | 1500006 |
| 2007/3/3   | 342      | 1500006 |
| 2007/3/4   | 342      | 1500006 |
| 2007/3/5   | 342      | 1500006 |
| 2007/3/6   | 342      | 1500006 |
| 2007/3/7   | 342      | 1500006 |
| 2007/3/8   | 342      | 1500006 |
| 2007/3/9   | 342      | 1500006 |
| 2007/3/10  | 342      | 1500006 |
| 2007/3/11  | 342      | 1500006 |
| 2007/3/12  | 342      | 1500006 |
| 2007/3/13  | 342      | 1500006 |
| 2007/3/14  | 342      | 1500006 |
| 2007/3/15  | 342      | 1500006 |
| 2007/3/16  | 342      | 1500006 |
| 2007/3/17  | 342      | 1500006 |
| 2007/3/18  | 342      | 1500006 |
| 2007/3/19  | 342      | 1500006 |
| 2007/3/20  | 342      | 1500006 |
| 2007/3/21  | 342      | 1500006 |
| 2007/3/22  | 342      | 1500006 |
| 2007/3/23  | 342      | 1500006 |
| 2007/3/24  | 342      | 1500006 |
| 2007/3/25  | 342      | 1500006 |
| 2007/3/26  | 342      | 1500006 |
| 2007/3/27  | 342      | 1500006 |
| 2007/3/28  | 342      | 1500006 |
| 2007/3/29  | 342      | 1500006 |
| 2007/3/30  | 342      | 1500006 |
| 2007/3/31  | 342      | 1500006 |
| 2007/4/1   | 342      | 1500006 |
| 2007/4/2   | 342      | 1500006 |
| 2007/4/3   | 342      | 1500006 |
| 2007/4/4   | 342      | 1500006 |
| 2007/4/5   | 342      | 1500006 |
| 2007/4/6   | 342      | 1500006 |
| 2007/4/7   | 342      | 1500006 |
| 2007/4/8   | 342      | 1500006 |
| 2007/4/9   | 342      | 1500006 |
| 2007/4/10  | 342      | 1500006 |
| 2007/4/11  | 342      | 1500006 |
| 2007/4/12  | 342      | 1500006 |
| 2007/4/13  | 342      | 1500006 |
| 2007/4/14  | 342      | 1500006 |
| 2007/4/15  | 342      | 1500006 |
| 2007/4/16  | 342      | 1500006 |
| 2007/4/17  | 342      | 1500006 |
| 2007/4/18  | 342      | 1500006 |
| 2007/4/19  | 342      | 1500006 |
| 2007/4/20  | 342      | 1500006 |
| 2007/4/21  | 342      | 1500006 |
| 2007/4/22  | 342      | 1500006 |
| 2007/4/23  | 342      | 1500006 |
| 2007/4/24  | 342      | 1500006 |
| 2007/4/25  | 342      | 1500006 |
| 2007/4/26  | 342      | 1500006 |
| 2007/4/27  | 342      | 1500006 |
| 2007/4/28  | 342      | 1500006 |
| 2007/4/29  | 342      | 1500006 |
| 2007/4/30  | 342      | 1500006 |
| 2007/5/1   | 342      | 1500006 |
| 2007/5/2   | 342      | 1500006 |
| 2007/5/3   | 342      | 1500006 |
| 2007/5/4   | 342      | 1500006 |
| 2007/5/5   | 342      | 1500006 |
| 2007/5/6   | 342      | 1500006 |
| 2007/5/7   | 342      | 1500006 |
| 2007/5/8   | 342      | 1500006 |
| 2007/5/9   | 342      | 1500006 |
| 2007/5/10  | 342      | 1500006 |
| 2007/5/11  | 342      | 1500006 |
| 2007/5/12  | 342      | 1500006 |
| 2007/5/13  | 342      | 1500006 |
| 2007/5/14  | 342      | 1500006 |
| 2007/5/15  | 342      | 1500006 |
| 2007/5/16  | 342      | 1500006 |
| 2007/5/17  | 342      | 1500006 |
| 2007/5/18  | 342      | 1500006 |
| 2007/5/19  | 342      | 1500006 |
| 2007/5/20  | 342      | 1500006 |
| 2007/5/21  | 342      | 1500006 |
| 2007/5/22  | 342      | 1500006 |
| 2007/5/23  | 342      | 1500006 |
| 2007/5/24  | 342      | 1500006 |
| 2007/5/25  | 342      | 1500006 |
| 2007/5/26  | 342      | 1500006 |
| 2007/5/27  | 342      | 1500006 |
| 2007/5/28  | 342      | 1500006 |
| 2007/5/29  | 342      | 1500006 |
| 2007/5/30  | 342      | 1500006 |
| 2007/5/31  | 342      | 1500006 |
| 2007/6/1   | 342      | 1500006 |
| 2007/6/2   | 342      | 1500006 |
| 2007/6/3   | 342      | 1500006 |
| 2007/6/4   | 342      | 1500006 |
| 2007/6/5   | 342      | 1500006 |
| 2007/6/6   | 342      | 1500006 |
| 2007/6/7   | 342      | 1500006 |
| 2007/6/8   | 342      | 1500006 |
| 2007/6/9   | 342      | 1500006 |
| 2007/6/10  | 342      | 1500006 |
| 2007/6/11  | 342      | 1500006 |
| 2007/6/12  | 342      | 1500006 |
| 2007/6/13  | 342      | 1500006 |
| 2007/6/14  | 342      | 1500006 |
| 2007/6/15  | 342      | 1500006 |
| 2007/6/16  | 342      | 1500006 |
| 2007/6/17  | 342      | 1500006 |
| 2007/6/18  | 342      | 1500006 |
| 2007/6/19  | 342      | 1500006 |
| 2007/6/20  | 342      | 1500006 |
| 2007/6/21  | 342      | 1500006 |
| 2007/6/22  | 342      | 1500006 |
| 2007/6/23  | 342      | 1500006 |
| 2007/6/24  | 342      | 1500006 |
| 2007/6/25  | 342      | 1500006 |
| 2007/6/26  | 342      | 1500006 |
| 2007/6/27  | 342      | 1500006 |
| 2007/6/28  | 342      | 1500006 |
| 2007/6/29  | 342      | 1500006 |
| 2007/6/30  | 342      | 1500006 |
| 2007/7/1   | 342      | 1500006 |
| 2007/7/2   | 342      | 1500006 |
| 2007/7/3   | 342      | 1500006 |
| 2007/7/4   | 342      | 1500006 |
| 2007/7/5   | 342      | 1500006 |
| 2007/7/6   | 342      | 1500006 |
| 2007/7/7   | 342      | 1500006 |
| 2007/7/8   | 342      | 1500006 |
| 2007/7/9   | 342      | 1500006 |
| 2007/7/10  | 342      | 1500006 |
| 2007/7/11  | 342      | 1500006 |
| 2007/7/12  | 342      | 1500006 |
| 2007/7/13  | 342      | 1500006 |
| 2007/7/14  | 342      | 1500006 |
| 2007/7/15  | 342      | 1500006 |
| 2007/7/16  | 342      | 1500006 |
| 2007/7/17  | 342      | 1500006 |
| 2007/7/18  | 342      | 1500006 |
| 2007/7/19  | 342      | 1500006 |
| 2007/7/20  | 342      | 1500006 |
| 2007/7/21  | 342      | 1500006 |
| 2007/7/22  | 342      | 1500006 |
| 2007/7/23  | 342      | 1500006 |
| 2007/7/24  | 342      | 1500006 |
| 2007/7/25  | 342      | 1500006 |
| 2007/7/26  | 342      | 1500006 |
| 2007/7/27  | 342      | 1500006 |
| 2007/7/28  | 342      | 1500006 |
| 2007/7/29  | 342      | 1500006 |
| 2007/7/30  | 342      | 1500006 |
| 2007/7/31  | 342      | 1500006 |
| 2007/8/1   | 342      | 1500006 |
| 2007/8/2   | 342      | 1500006 |
| 2007/8/3   | 342      | 1500006 |
| 2007/8/4   | 342      | 1500006 |
| 2007/8/5   | 342      | 1500006 |
| 2007/8/6   | 342      | 1500006 |
| 2007/8/7   | 342      | 1500006 |
| 2007/8/8   | 342      | 1500006 |
| 2007/8/9   | 342      | 1500006 |
| 2007/8/10  | 342      | 1500006 |
| 2007/8/11  | 342      | 1500006 |
| 2007/8/12  | 342      | 1500006 |
| 2007/8/13  | 342      | 1500006 |
| 2007/8/14  | 342      | 1500006 |
| 2007/8/15  | 342      | 1500006 |
| 2007/8/16  | 342      | 1500006 |
| 2007/8/17  | 342      | 1500006 |
| 2007/8/18  | 342      | 1500006 |
| 2007/8/19  | 342      | 1500006 |
| 2007/8/20  | 342      | 1500006 |
| 2007/8/21  | 342      | 1500006 |
| 2007/8/22  | 342      | 1500006 |
| 2007/8/23  | 342      | 1500006 |
| 2007/8/24  | 342      | 1500006 |
| 2007/8/25  | 342      | 1500006 |
| 2007/8/26  | 342      | 1500006 |
| 2007/8/27  | 342      | 1500006 |
| 2007/8/28  | 342      | 1500006 |
| 2007/8/29  | 342      | 1500006 |
| 2007/8/30  | 342      | 1500006 |
| 2007/8/31  | 342      | 1500006 |
| 2007/9/1   | 342      | 1500006 |
| 2007/9/2   | 342      | 1500006 |
| 2007/9/3   | 342      | 1500006 |
| 2007/9/4   | 342      | 1500006 |
| 2007/9/5   | 342      | 1500006 |
| 2007/9/6   | 342      | 1500006 |
| 2007/9/7   | 342      | 1500006 |
| 2007/9/8   | 342      | 1500006 |
| 2007/9/9   | 342      | 1500006 |
| 2007/9/10  | 342      | 1500006 |
| 2007/9/11  | 342      | 1500006 |
| 2007/9/12  | 342      | 1500006 |
| 2007/9/13  | 342      | 1500006 |
| 2007/9/14  | 342      | 1500006 |
| 2007/9/15  | 342      | 1500006 |
| 2007/9/16  | 342      | 1500006 |
| 2007/9/17  | 342      | 1500006 |
| 2007/9/18  | 342      | 1500006 |
| 2007/9/19  | 342      | 1500006 |
| 2007/9/20  | 342      | 1500006 |
| 2007/9/21  | 342      | 1500006 |
| 2007/9/22  | 342      | 1500006 |
| 2007/9/23  | 342      | 1500006 |
| 2007/9/24  | 342      | 1500006 |
| 2007/9/25  | 342      | 1500006 |
| 2007/9/26  | 342      | 1500006 |
| 2007/9/27  | 342      | 1500006 |
| 2007/9/28  | 342      | 1500006 |
| 2007/9/29  | 342      | 1500006 |
| 2007/9/30  | 342      | 1500006 |
| 2007/10/1  | 342      | 1500006 |
| 2007/10/2  | 342      | 1500006 |
| 2007/10/3  | 342      | 1500006 |
| 2007/10/4  | 342      | 1500006 |
| 2007/10/5  | 342      | 1500006 |
| 2007/10/6  | 342      | 1500006 |
| 2007/10/7  | 342      | 1500006 |
| 2007/10/8  | 342      | 1500006 |
| 2007/10/9  | 342      | 1500006 |
| 2007/10/10 | 342      | 1500006 |
| 2007/10/11 | 342      | 1500006 |
| 2007/10/12 | 342      | 1500006 |
| 2007/10/13 | 342      | 1500006 |
| 2007/10/14 | 342      | 1500006 |
| 2007/10/15 | 342      | 1500006 |
| 2007/10/16 | 342      | 1500006 |
| 2007/10/17 | 342      | 1500006 |
| 2007/10/18 | 342      | 1500006 |
| 2007/10/19 | 342      | 1500006 |
| 2007/10/20 | 342      | 1500006 |
| 2007/10/21 | 342      | 1500006 |
| 2007/10/22 | 342      | 1500006 |
| 2007/10/23 | 342      | 1500006 |
| 2007/10/24 | 342      | 1500006 |
| 2007/10/25 | 342      | 1500006 |
| 2007/10/26 | 342      | 1500006 |
| 2007/10/27 | 342      | 1500006 |
| 2007/10/28 | 342      | 1500006 |
| 2007/10/29 | 342      | 1500006 |
| 2007/10/30 | 342      | 1500006 |
| 2007/10/31 | 342      | 1500006 |
| 2007/11/1  | 342      | 1500006 |
| 2007/11/2  | 342      | 1500006 |
| 2007/11/3  | 342      | 1500006 |
| 2007/11/4  | 342      | 1500006 |
| 2007/11/5  | 342      | 1500006 |
| 2007/11/6  | 342      | 1500006 |
| 2007/11/7  | 342      | 1500006 |
| 2007/11/8  | 342      | 1500006 |
| 2007/11/9  | 342      | 1500006 |
| 2007/11/10 | 342      | 1500006 |
| 2007/11/11 | 342      | 1500006 |
| 2007/11/12 | 342      | 1500006 |

# PI for Office 2010

## PI and PowerPivot for Excel 2010

OSIsoft\_PI\_PowerPivot\_Demo - 2 - Microsoft Excel

**PowerPivot Tools**

Design Layout Format Analyze

File Home Insert Page Layout Formulas Data Review View PowerPivot

PowerPivot window Launch New Measure Delete Measure Measure Settings PivotTable View Create Linked Table Update All Update Selected Options & Diagnostics Field List Show/Hide

Chart 1

**NUGREEN**

CalendarYear: CY2007 CY2008 CY2009

Plant: Houston Little Rock Tucson Wichita

Process: Cracking Distilling Extruding Milling

**Energy Cost by Shift**

Sum of EnergyCost

EquipmentType: Cooling Fan Pump

Plant: Shift

**Energy Cost by Process**

Sum of EnergyCost

EquipmentType: Plant

Legend: Total

Axis Fields (Ca...): Plant Shift

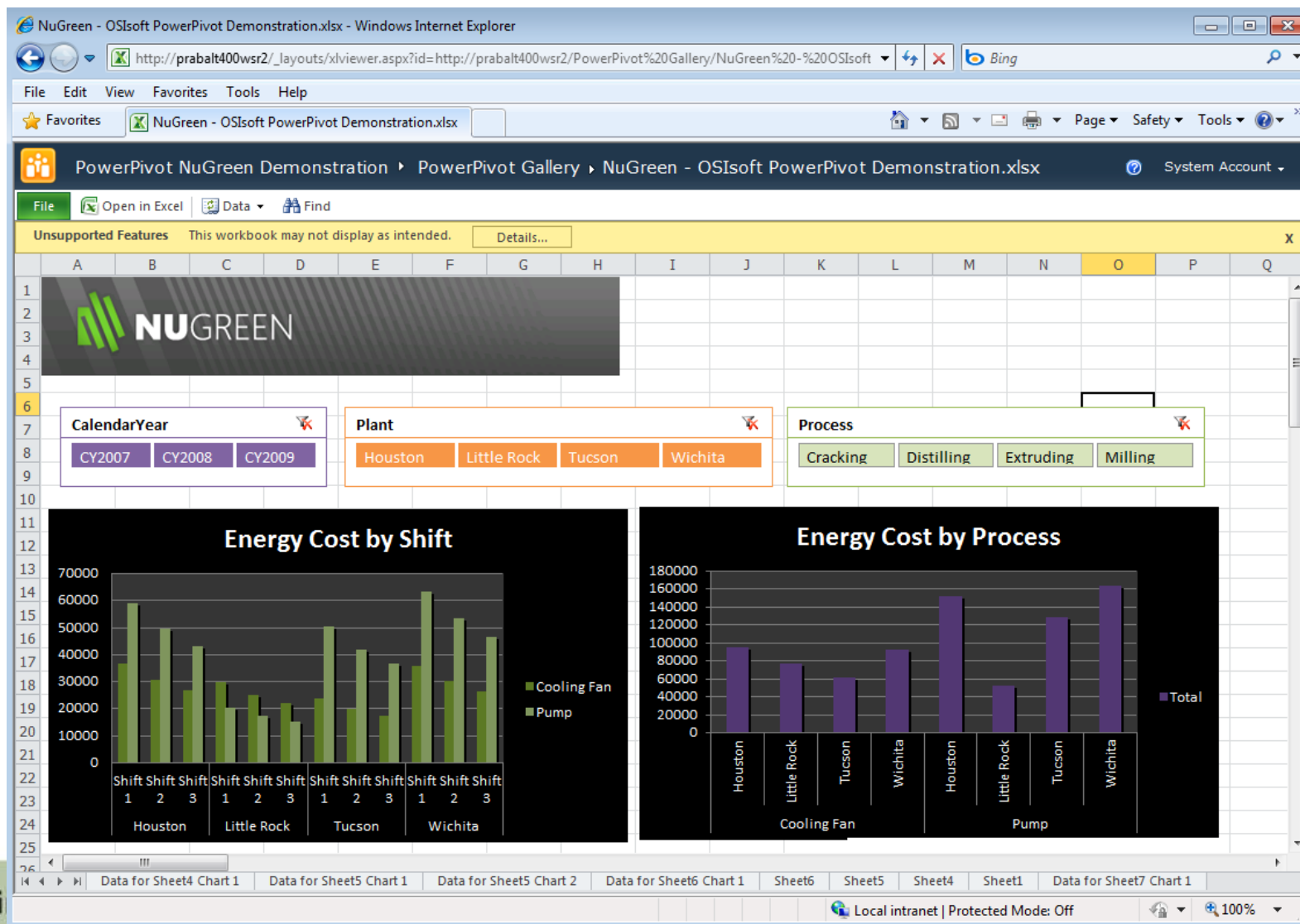
Values: Sum of Energ...

Defer Layout Update Update

Sheet6 Sheet5 Sheet4 Sheet1 Data for Sheet7 Chart 1 Data for Sheet7 Chart 2 Sheet7

# PI for Office 2010

## PI and PowerPivot for SharePoint 2010



# Demo – PI OLEDB Enterprise 2010, Excel 2010, and PowerPivot

[Development](#)

[Publish and Browse](#)

[Browse Slicer](#)

# Demo

## PI for Office 2010

### [Dashboard Application](#)



# PI for Office 2010

## Information to \$\$\$



- Productivity through familiar and intuitive tools
- End users to create their own BI solutions
- Improve sharing and discovery of insights



- Organizational productivity through dashboards
- Visibility into key team and organizational metrics
- Business user efficiency and collaboration



- Cut costs by leveraging existing IT investments
- Scale-out to support BI for all users
- Familiar and intuitive management tools

# PI for Office 2010

## Product Theatre Sessions

- Building Great Dashboards with OSIsoft and Microsoft Components
- Configuring Integrated Visualizations with PI WebParts
- Visualizing Data with PI DataLink 2010, Microsoft Excel 2010 and Excel Services
- Introducing Multidimensional Data and PI

# Simple, Relevant, and Collaborative

Simple

- ➔ Simple naming and versioning
- ➔ Single PI Server package
- ➔ Aligned release schedule
- ➔ Organize PI data around assets

Relevant

- ➔ Migration of existing asset definitions
- ➔ Integration of PI with business systems
- ➔ New ways to analyze data

Collaborative

- ➔ Use the tools you already know
- ➔ Business Intelligence for the masses
- ➔ Easily share insights with others



**OSI**soft®

**UC**2010

**Real Time Information** — Currency of the New Decade

Thank you

© Copyright 2010 OSIsoft, LLC., 777 Davis St., San Leandro, CA 94577