



**OSIsoft®**

**UC2010**

**Real Time Information** — Currency of the New Decade

Hilton San Francisco Union Square | San Francisco, CA

**April 26-28, 2010**

# Building Great Dashboards with OSIsoft & Microsoft Components

Laurie Dieffenbach, Product Manager

Chad Chisholm, Senior Developer

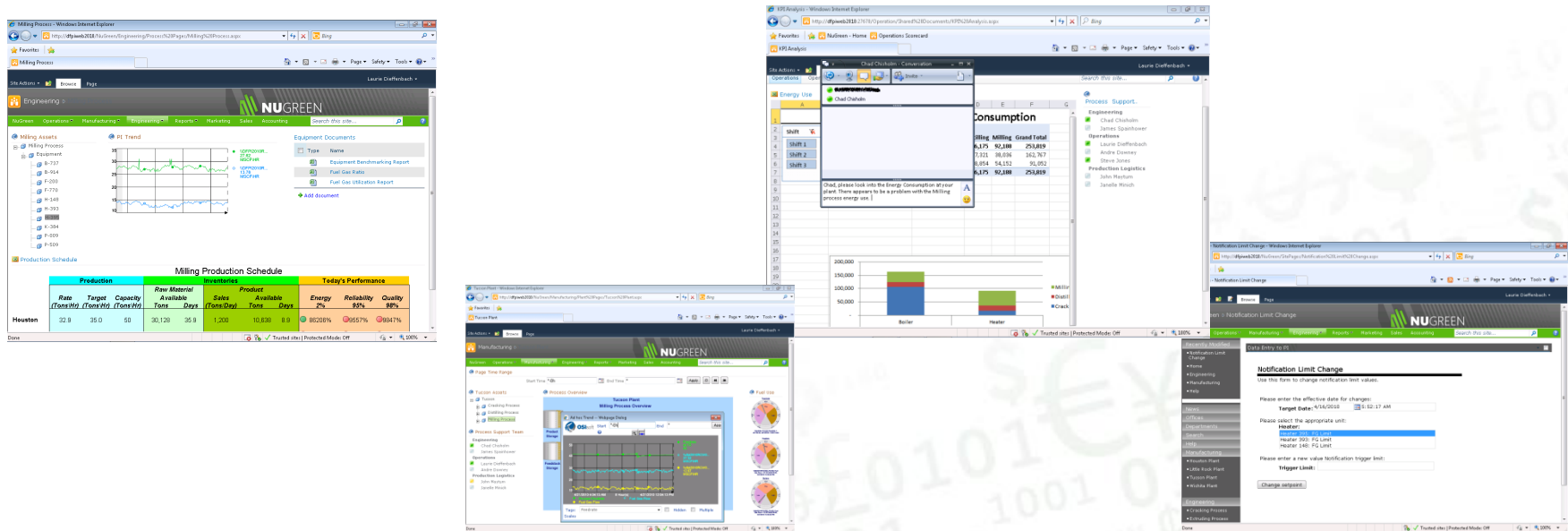
OSIsoft

# Providing Data Visibility to More Users



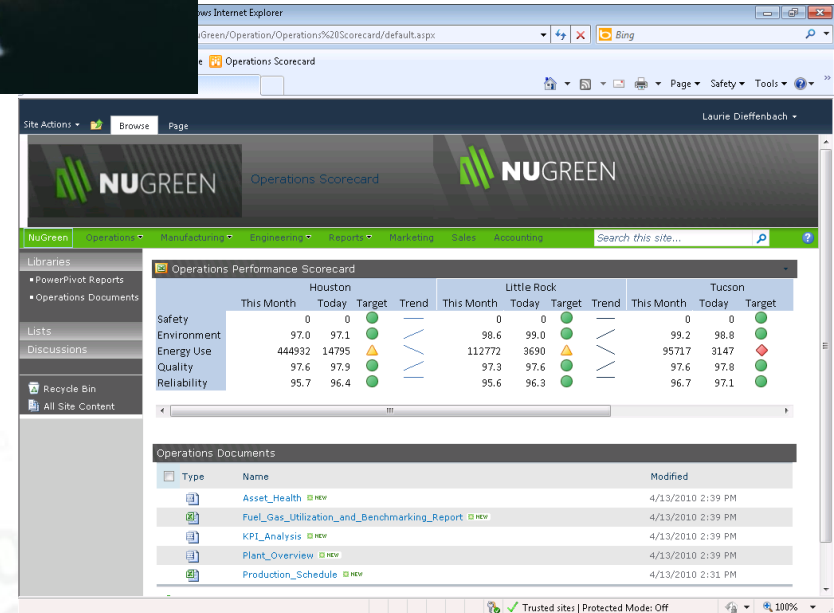
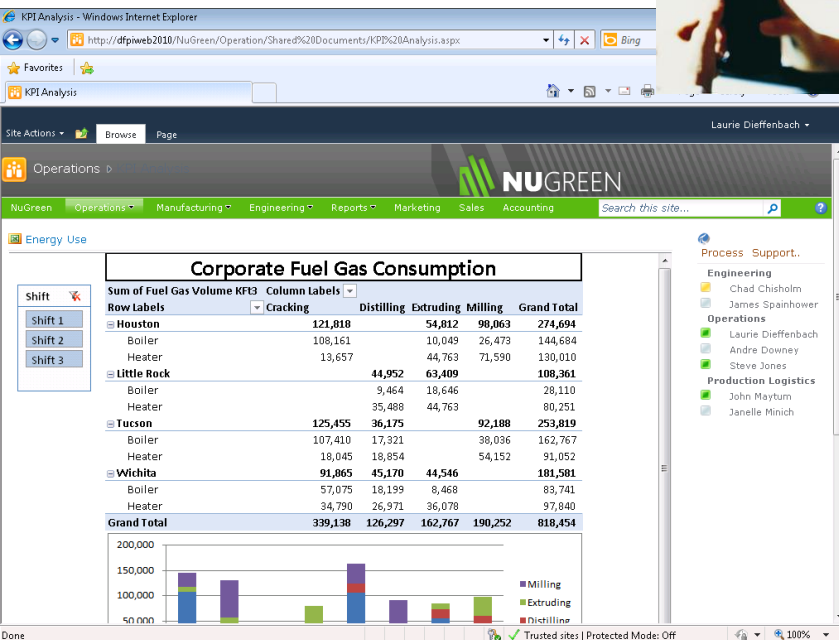
# SharePoint 2010 web sites

- Providing easy-to-use web sites available to more people so they can solve problems together...

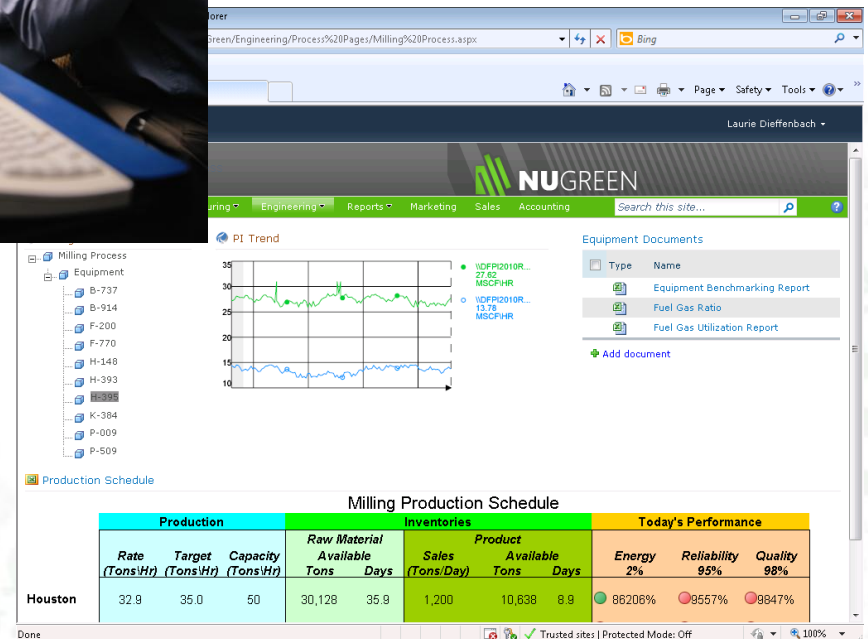
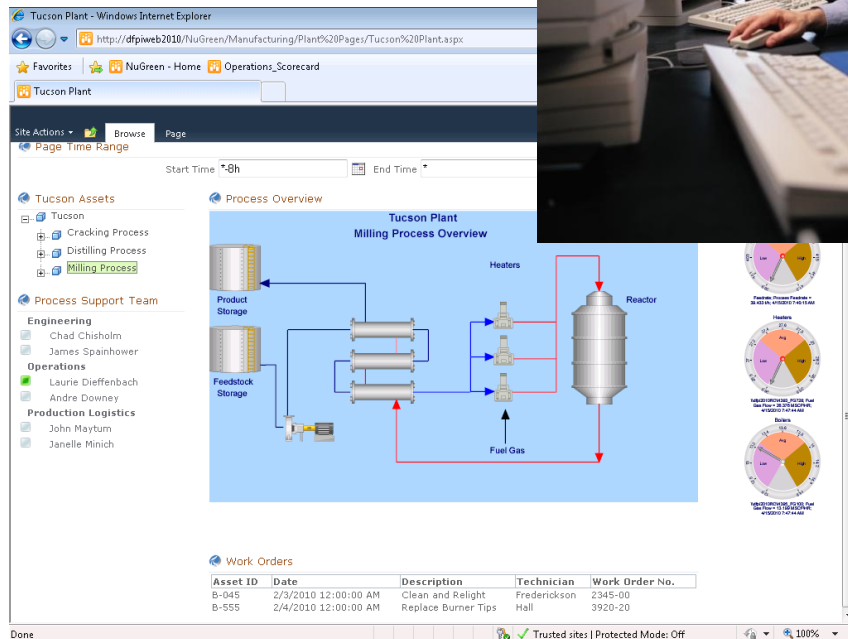




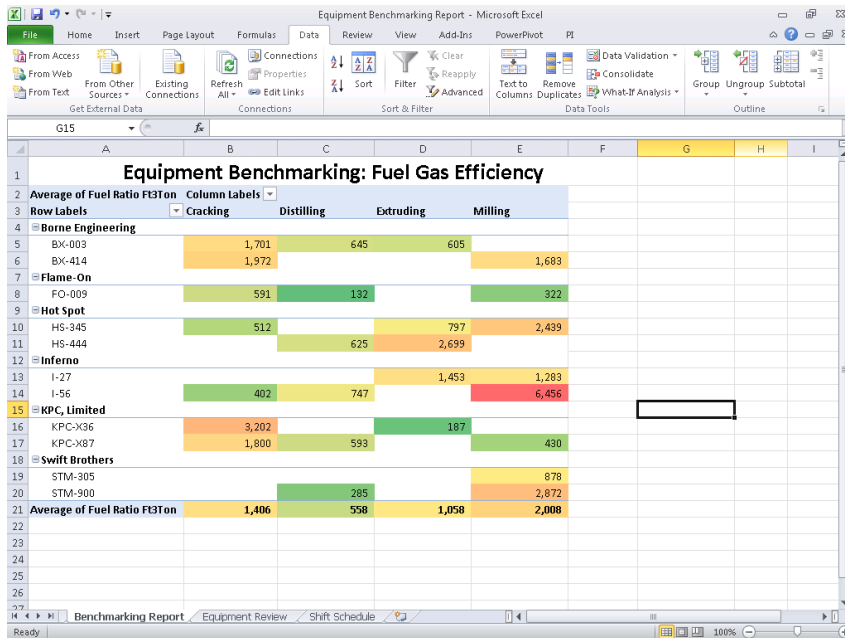
# Today's Demo: Dashboard for a Busy Executive



# SharePoint Pages for a Busy Engineer



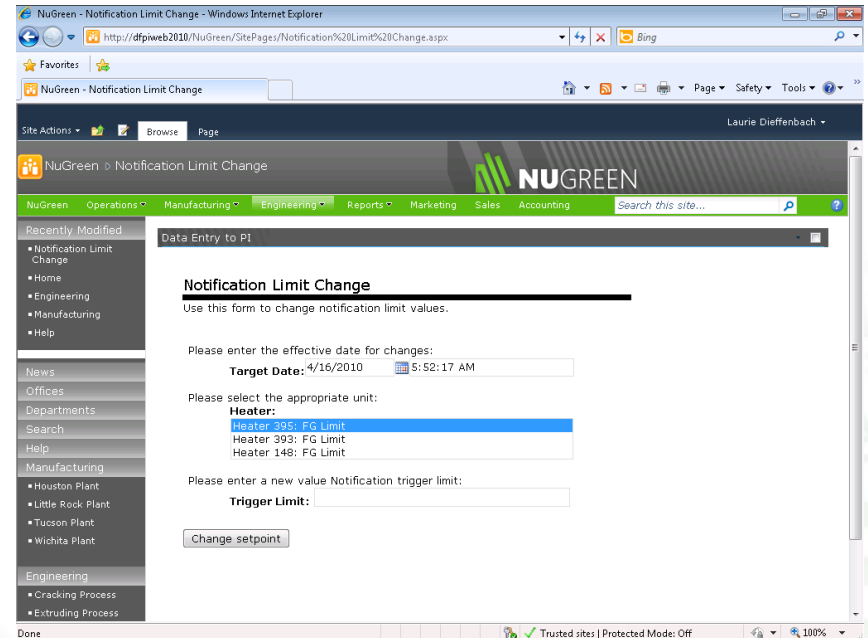
# Featuring Microsoft functionality powered by PI data



Equipment Benchmarking Report - Microsoft Excel

Equipment Benchmarking: Fuel Gas Efficiency

Average of Fuel Ratio FT3/Ton	Cracking	Distilling	Extruding	Milling
<b>Borne Engineering</b>				
BX-003	1,701	645	605	
BX-414	1,972			1,683
<b>Flame-On</b>				
FO-009	591	132		322
<b>Hot Spot</b>				
HS-345	512		797	2,439
HS-444		625	2,699	
<b>Inferno</b>				
I-27			1,453	1,283
I-56	402	747		6,456
<b>KPC, Limited</b>				
KPC-X36	3,202		187	
KPC-X87	1,800	593		430
<b>Swift Brothers</b>				
STM-305				878
STM-900		285		2,872
<b>Average of Fuel Ratio FT3/Ton</b>	<b>1,406</b>	<b>558</b>	<b>1,058</b>	<b>2,008</b>



NuGreen - Notification Limit Change - Windows Internet Explorer

http://dfpiweb2010/NuGreen/SitePages/Notification%20Limit%20Change.aspx

NuGreen - Notification Limit Change

Site Actions: Browse Page

Laurie Dieffenbach

NuGreen Notification Limit Change

NuGreen Operations Manufacturing Engineering Reports Marketing Sales Accounting Search this site...

Recently Modified

- Notification Limit Change
- Home
- Engineering
- Manufacturing
- Help

News

Offices

Departments

Search

Help

Manufacturing

- Houston Plant
- Little Rock Plant
- Tucson Plant
- Wichita Plant

Engineering

- Cracking Process
- Extruding Process

Data Entry to PI

**Notification Limit Change**

Use this form to change notification limit values.

Please enter the effective date for changes:

Target Date: 4/16/2010 5:52:17 AM

Please select the appropriate unit:

Heater:

- Heater 305: FG Limit
- Heater 393: FG Limit
- Heater 148: FG Limit

Please enter a new value Notification trigger limit:

Trigger Limit:

Change setpoint

Done

Trusted sites | Protected Mode: Off

# Demonstration

We begin with the VP of Operations at NuGreen....





NuGreen - Home - Windows Internet Explorer

http://dfpiweb2010/NuGreen/SitePages/Home.aspx

Site Actions: Browse Page

NuGreen - Home

NuGREEN

NuGreen Operations Manufacturing Engineering Reports Marketing Sales Accounting

Search this site...

News  
Offices  
Departments  
Search  
Help  
Manufacturing  
Houston Plant  
Little Rock Plant  
Tucson Plant  
Wichita Plant  
Engineering  
Cracking Process  
Extruding Process  
Milling Process  
Recycle Bin  
All Site Content

Laurie Dieffenbach

**Corporate Portal**

As one of the premier manufacturing and process companies, NuGreen is uniquely suited to meeting the needs of our customers in rapidly changing market conditions. Our goal is to provide world-class products and services, while maintaining our own core values of excellence, safety, and innovation.

**Event**

Title	Start Time	End Time	All Day Event
FY10 First Quarter Financial Results	4/6/2010 5:00 PM	4/6/2010 6:00 PM	
Executive Retreat	4/10/2010 12:00 AM	4/11/2010 11:59 PM	Yes
Safety Day	4/16/2010 12:00 PM	4/16/2010 12:00 PM	
New Detroit Plant Opens	4/26/2010 12:00 AM	4/26/2010 11:59 PM	Yes
Analyst Briefing Sessions	4/30/2010 8:00 AM	4/30/2010 12:00 PM	
New Marketing Campaign Launches	5/5/2010 12:00 AM	5/5/2010 11:59 PM	Yes

**I need to...**

Go

**Employee Lookup**

Search

**Top Sites**

Type	Edit	URL	Notes
Human Resources			
Marketing			
Engineering			
Manufacturing			
Operations			
Sales			

+ Add new link

**Top Documents**

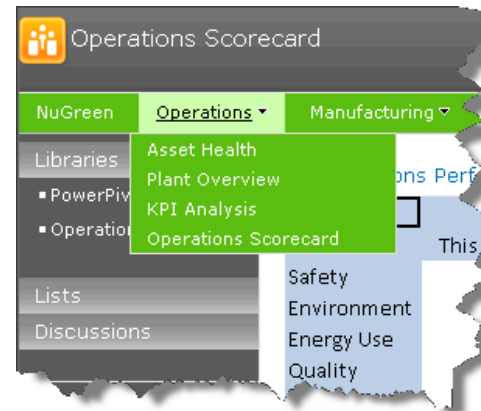
Type	Name	Modified	Modified By
Analyst Workbook	4/6/2010 4:43 PM	Chad Chisholm	
Our Company Values	4/6/2010 4:43 PM	Chad Chisholm	

Trusted sites | Protected Mode: Off

100%

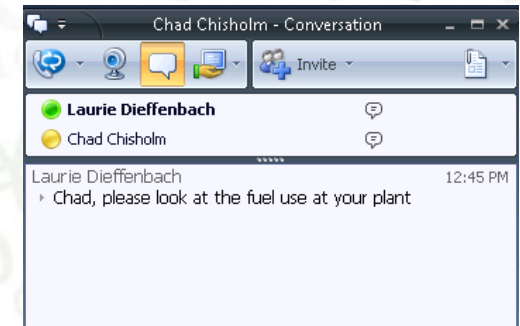
# VP of Operations

- Easy navigation to the information she needs
- Content is already built, but she can interact with it to focus on an issue
- She has easy access to assistance from experts



The screenshot shows a table titled 'Corporate Fuel Gas Consumption'. It has a 'Shift' dropdown on the left with options 'Shift 1', 'Shift 2', and 'Shift 3'. The table has columns for 'Sum of Fuel Gas Volume KFT3', 'Cracking', 'Distilling', 'Milling', and 'Grand Total'. The data is organized by 'Row Labels' (Tucson, Boiler, Heater) and 'Column Labels' (Cracking, Distilling, Milling, Grand Total).

Row Labels	Cracking	Distilling	Milling	Grand Total
Tucson	125,455	36,175	92,188	253,819
Boiler	107,410	17,321	38,036	162,767
Heater	18,045	18,854	54,152	91,052
Grand Total	125,455	36,175	92,188	253,819



# Next Up

- Now it's the Engineer's turn...





Laurie Dieffenbach - Conversation

Chad Chisholm  
Laurie Dieffenbach

Laurie Dieffenbach 11:19 AM  
Chad, are you there?

Chad Chisholm 11:19 AM  
Hello Steve

Laurie Dieffenbach 11:20 AM  
I need some help with the fuel consumption at Tucson.  
Can you take a look?

Chad Chisholm 11:20 AM  
I'll look into that now.

Laurie Dieffenbach 11:20 AM  
thanks

Last message received on 5/6/2010 at 11:20 AM.

A 😊

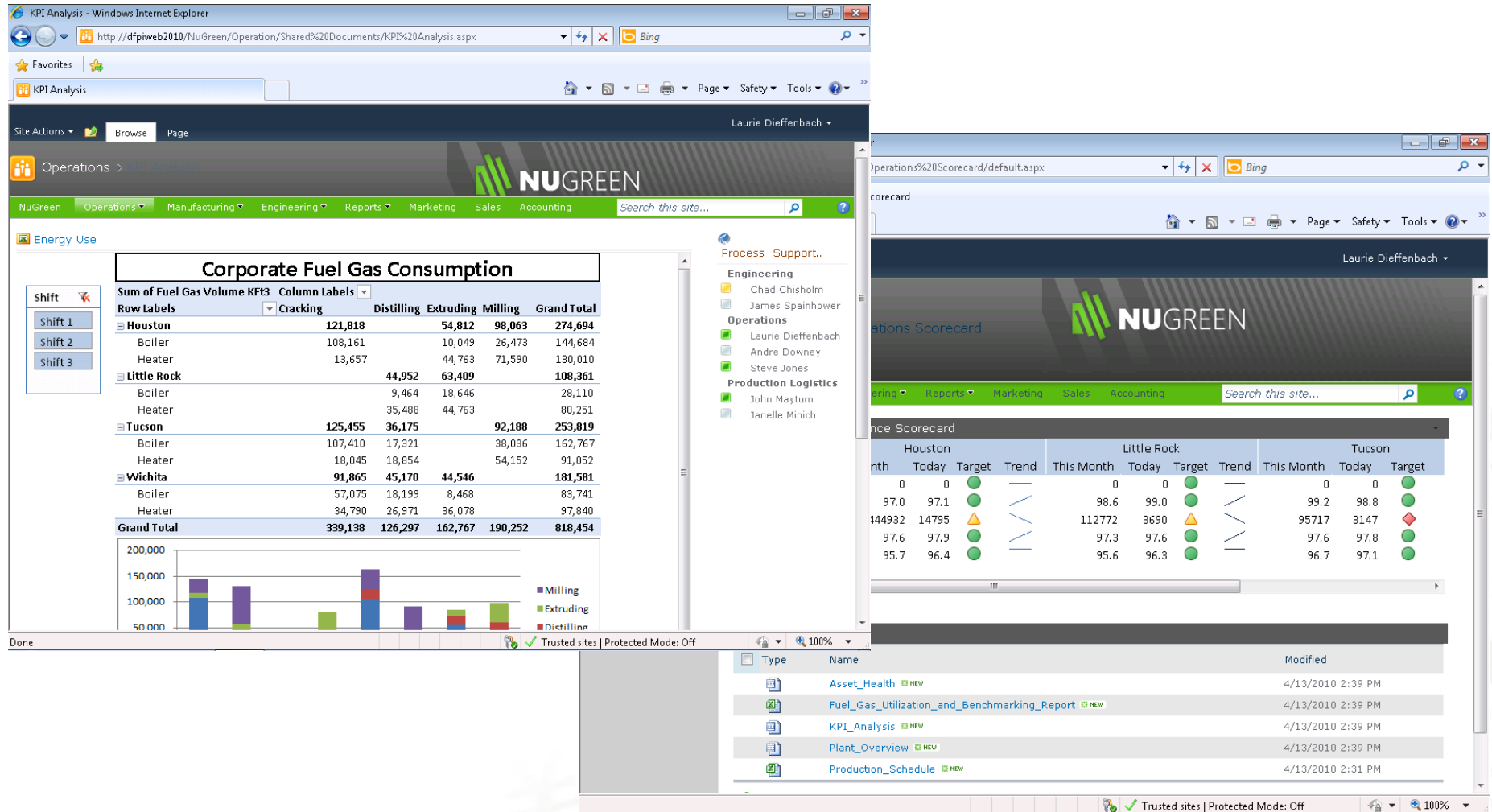
# Process Engineer

- Access to all the tools he needs
- Can contribute material for use by others
- Can act to resolve problems and prevent recurrence

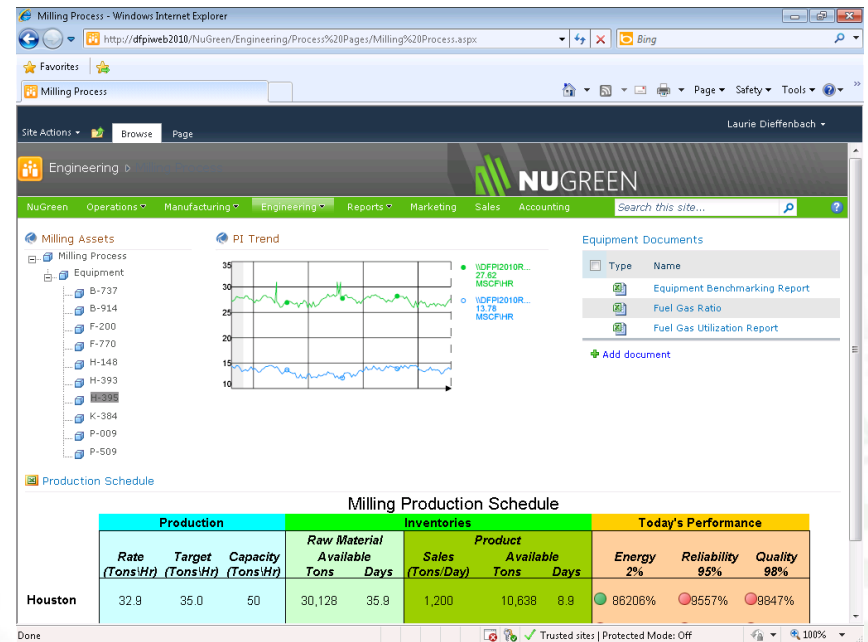
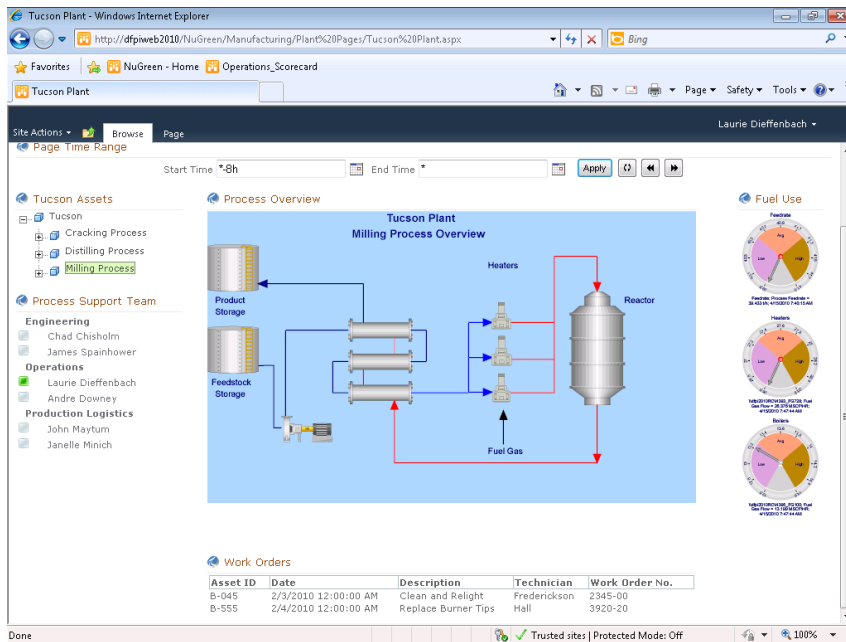




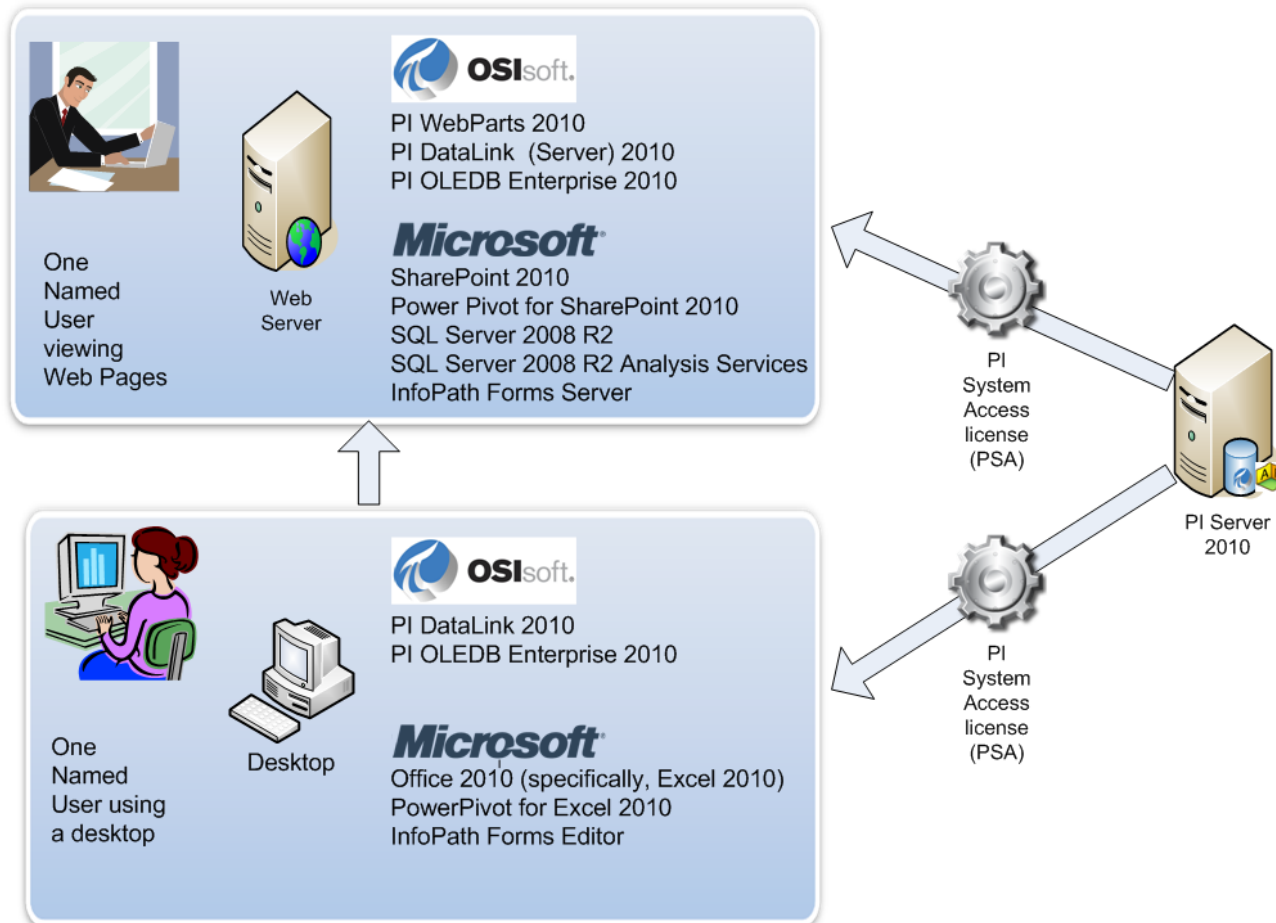
# Excel 2010 and PowerPivot



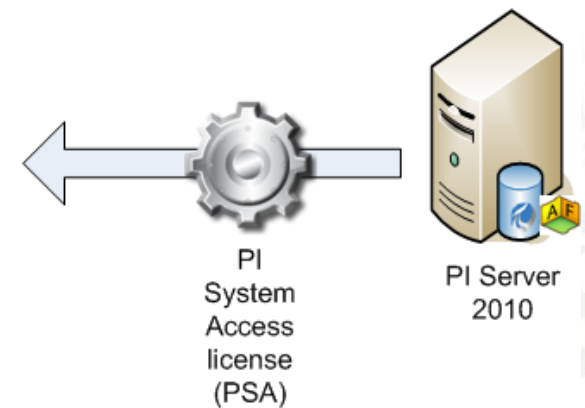
# PI WebParts and PI DataLink Server



# How this Demo was Built



# PI for Office 2010 from OSIsoft



# Next Steps

- Microsoft 2010 products released this month
- OSIsoft-compatible versions in development now, set to release this year
- System Integrator assistance recommended to manage complex non-PI data integration
- Building visualization is less challenging



# More Information

- PI for Office stations at Product Expo
- Additional talks on Multidimensional data analysis, PI WebParts and Business Intelligence
  - Visualizing Data with PI DataLink 2010, Microsoft Excel 2010 and Excel Services
  - Configuring Integrated Visualizations with PI WebParts
  - Introducing Multidimensional Data and PI

# Business Intelligence for Casual Users

- Microsoft and OSIsoft components... better together
- Easier for casual users
- Easier access to critical data
- More opportunities to collaborate and solve problems together



**OSI**soft®

**UC**2010

**Real Time Information** — Currency of the New Decade

Thank you

© Copyright 2010 OSIsoft, LLC., 777 Davis St., San Leandro, CA 94577