



OSIsoft®

UC2010

Real Time Information — Currency of the New Decade

Hilton San Francisco Union Square | San Francisco, CA

April 26-28, 2010

Recent Productivity Enhancements to PI ProcessBook

Laurie Dieffenbach, Product Manager

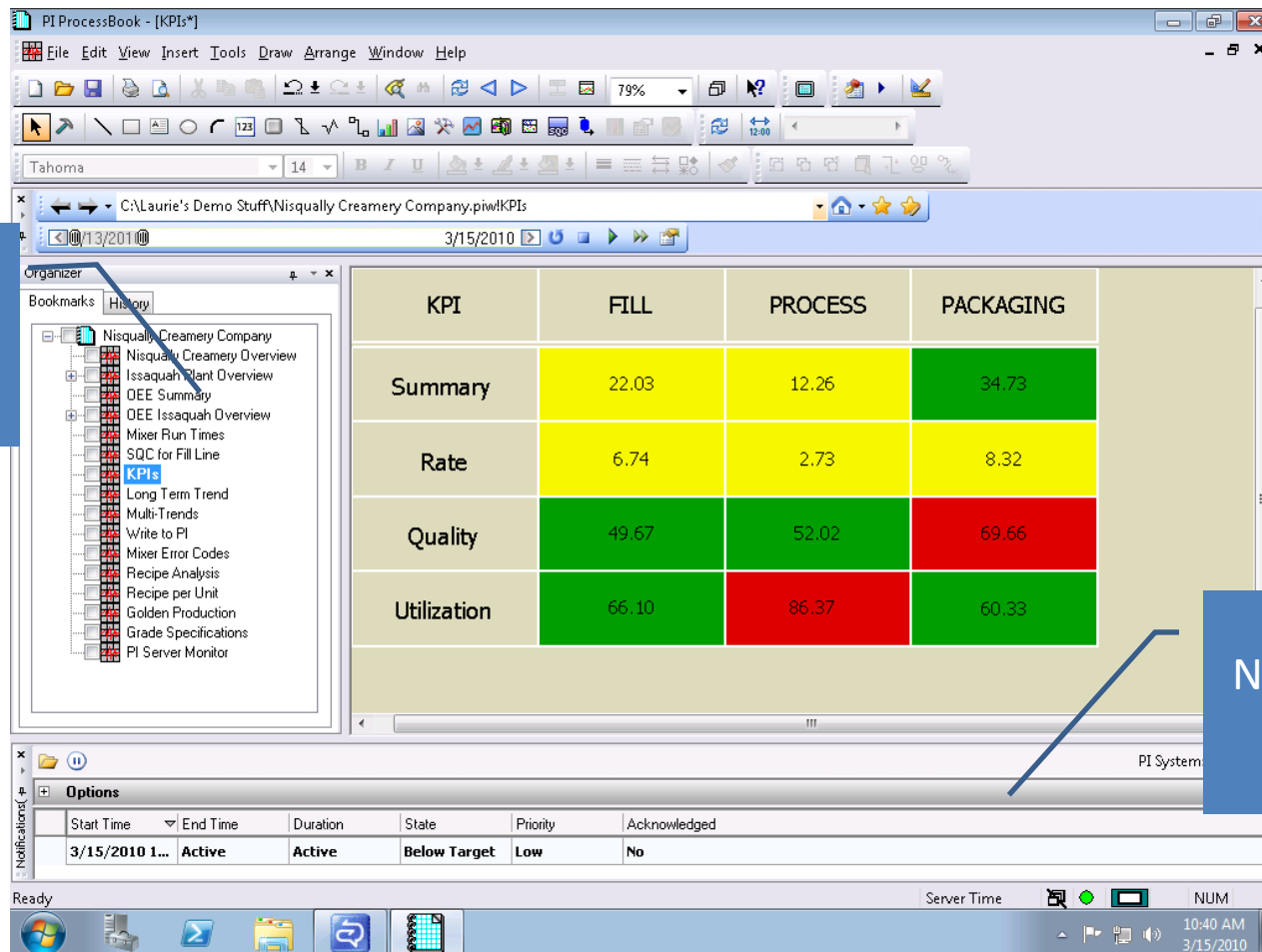
Andre Downey, Development Lead

OSIsoft

Operational Data Analysis and Collaboration

- PI ProcessBook provides operational monitoring, but there are also important features for acting on events and collaborating with other colleagues
- The features highlighted today have already been released

What You Will See...

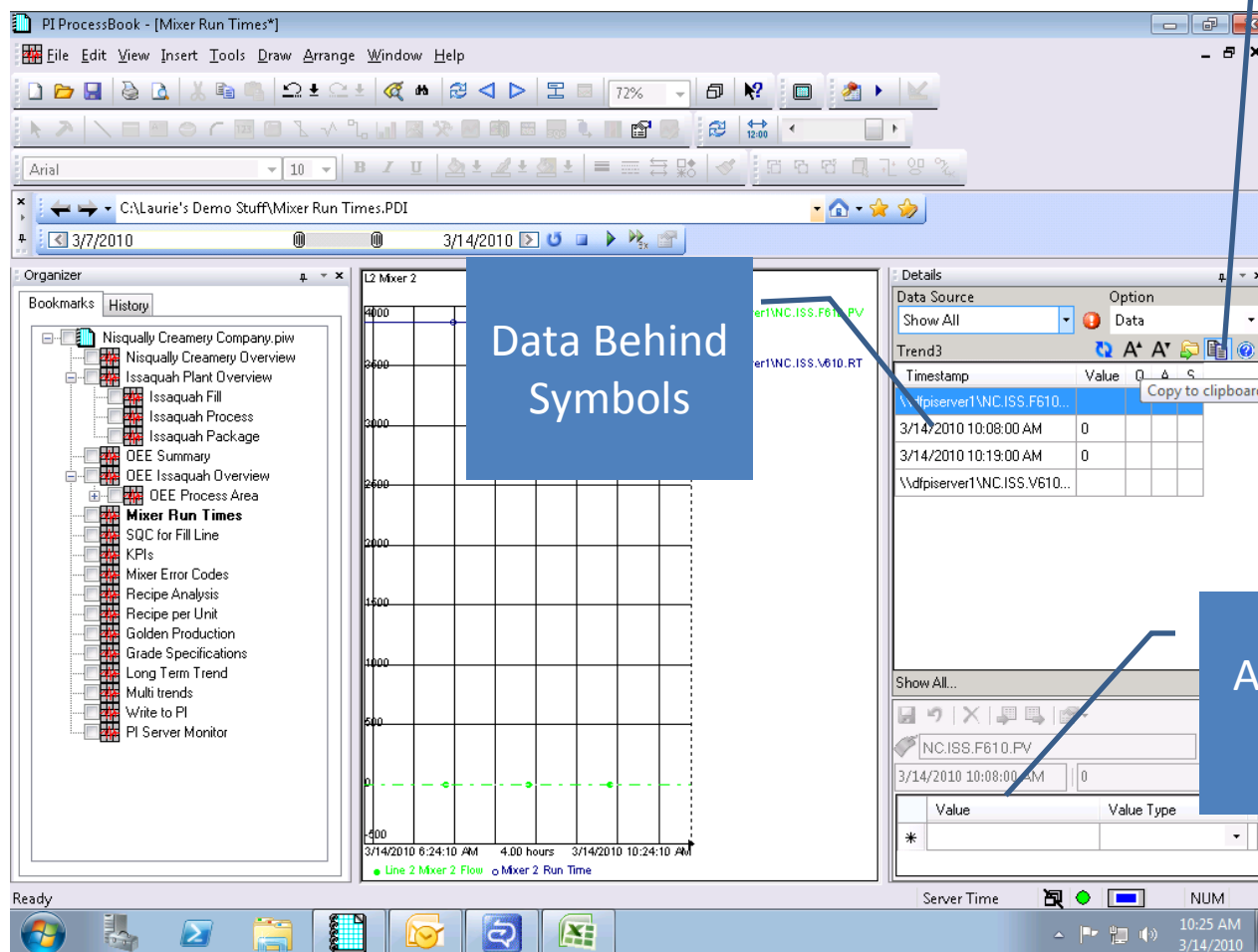


Bookmarks

Notification
S

Also Showing...

Copy to
Excel



Don't Forget...

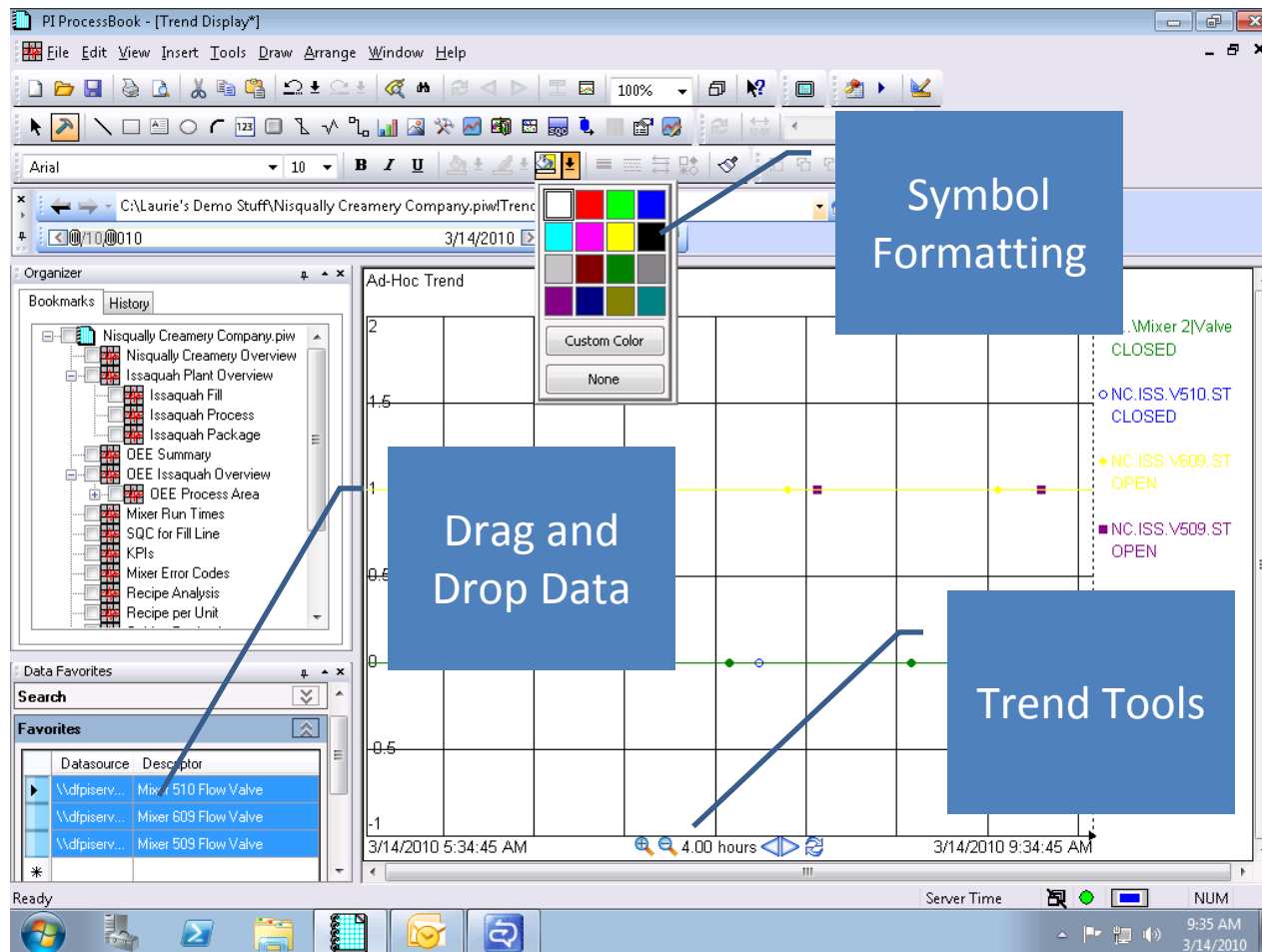
The screenshot displays the PI ProcessBook - OEE Overview application. The main window shows a tree view on the left with 'OEE Issaquah Overview' selected. The central area displays OEE data for 'Fill' and 'Process' stages, including Target and Actual values for OEE, Quality, Utilization, and Rate. A 'Communicator Integration' window is overlaid on the right, showing a conversation between Andre Downey and Laurie Dieffenbach. The window title is 'Laurie Dieffenbach - Conversation'. The conversation history shows messages from both parties, with the last message received on 3/17/2010 at 5:41 AM. The bottom of the screen shows a 'Notifications' table with columns for Start Time, End Time, Duration, State, Priority, and Acknowledged. The status bar at the bottom indicates 'Ready' and 'Server Time'.

Communicator Integration

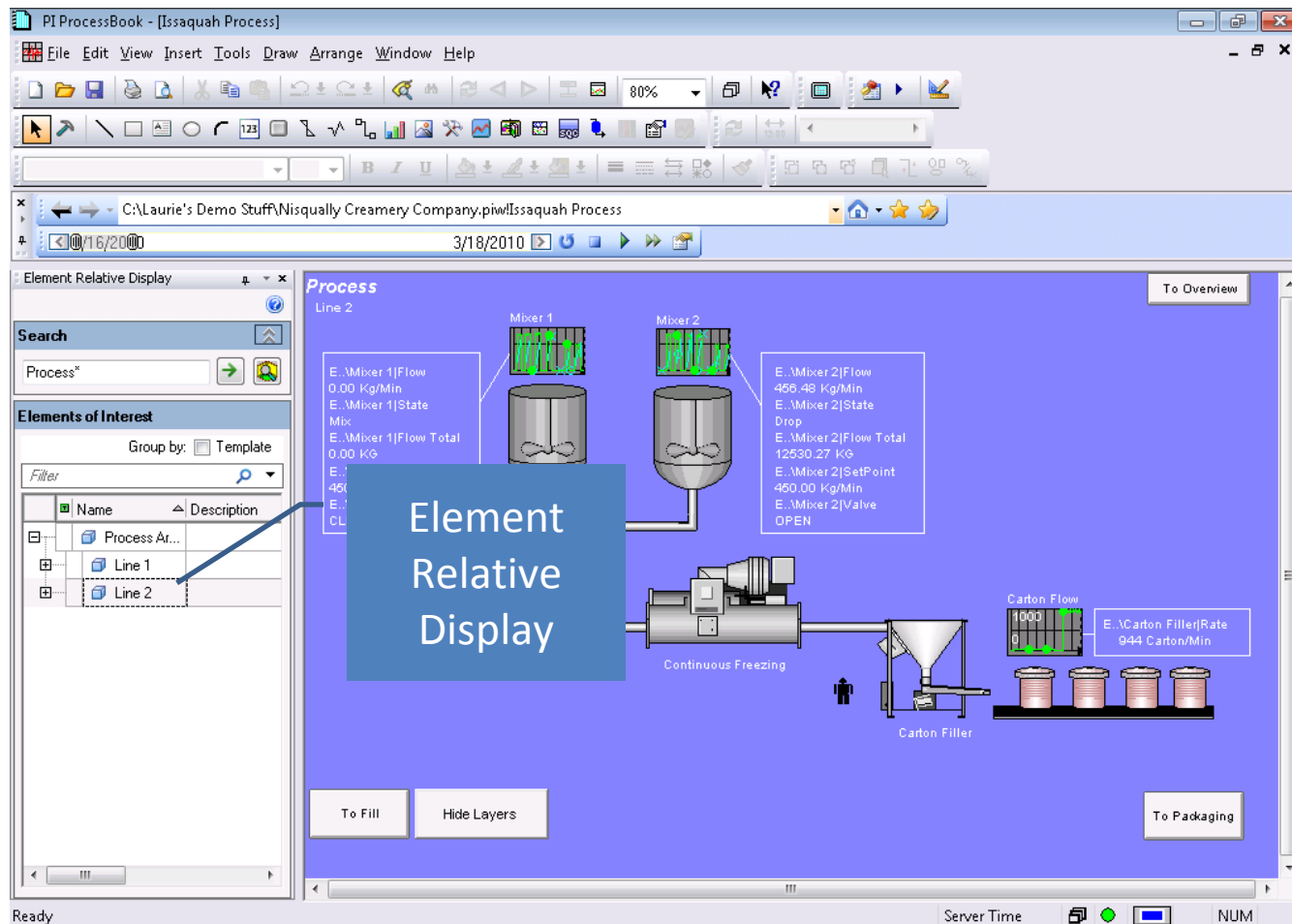
Contacts

Start Time	End Time	Duration	State	Priority	Acknowledged
3/15/2010 10:...	3/16/2010 8:00:00 AM	21:37:30	Below Target	Low	Yes
3/15/2010 1...	3/15/2010 10:22:00 ...	00:00:30	Below Target	Low	No

Not to Mention...



Oh, and This...



And Also...

The screenshot displays the OSIsoft PI Vision software interface. The main window shows a timeline view of data from 3/14/2010. On the left, an 'Organizer' pane lists various data sources, including 'Nisqually Creamery Company.piw', 'Issaquah Plant Overview', 'Issaquah Fill', 'Issaquah Process', 'Issaquah Package', 'OEE Summary', 'OEE Issaquah Overview', 'OEE Process Area', 'Mixer Run Times', 'SQC for Fill Line', 'KPIs', 'Mixer Error Codes', 'Recipe Analysis', 'Recipe per Unit', 'Golden Production', 'Grade Specifications', 'Long Term Trend', 'Multi trends', 'Write to PI', and 'PI Server Monitor'. A blue callout box labeled 'Playback Controls' points to the playback controls in the main window. A 'Playback Options' dialog box is open on the right, showing settings for 'Time Ranges', 'Playback Period', 'Refresh', and 'Speed'. The 'Time Ranges' section shows a 'Display Range' of '*-8 Hour'. The 'Playback Period' section shows a 'Start' time of '3/ 7/2010 12:00 AM' and an 'End' time of '3/14/2010 9:58 AM'. The 'Refresh' section shows a 'Refresh Rate (Sec)' of '5'. The 'Speed' section shows a 'Speed' of '1' and a unit of 'Minutes' per Second. The dialog box has 'OK', 'Cancel', and 'Help' buttons.

Playback Controls

Playback Options

Time Ranges
Display Range: *-8 Hour

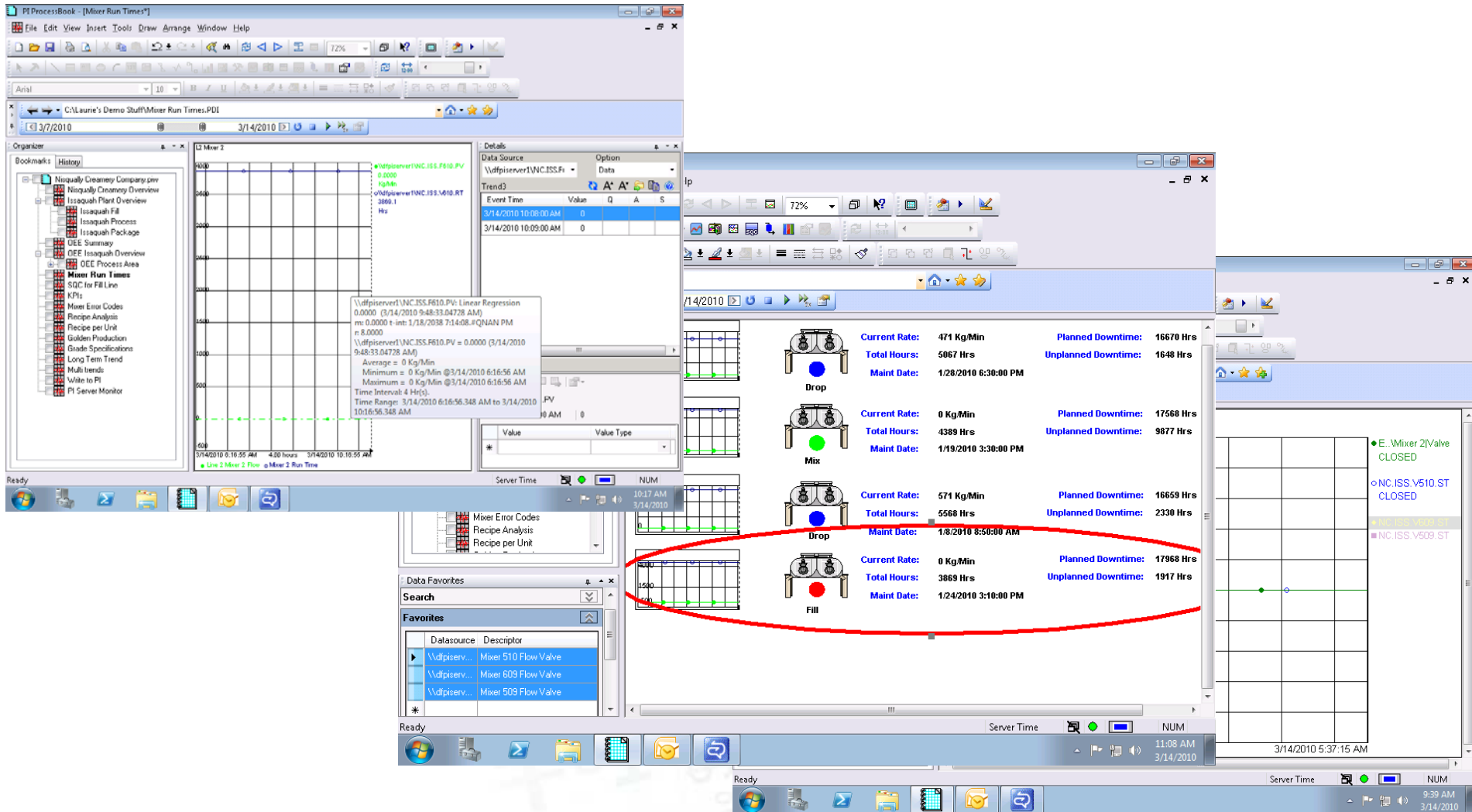
Playback Period
Start: 3/ 7/2010 12:00 AM
End: 3/14/2010 9:58 AM

Refresh
Refresh Rate (Sec): 5

Speed: 1 Minutes Per Second

OK Cancel Help

And More!



Demonstration

Andre and Laurie work together to solve a problem....

PIProcessBook - [KPIs*]

File Edit View Insert Tools Draw Arrange Window Help

90%

C:\Laurie's Demo Stuff\Nisqually Creamery Company.piw\KPIs

3/17/2010

KPI	FILL	PROCESS	PACKAGING
Summary	23.65	55.11	37.94
Rate	7.05	13.30	8.92
Quality	49.00	52.05	70.25
Utilization	68.76	79.56	61.00

PI System: PIAF

Options

Start Time	End Time	Duration	State	Priority	Acknowledged
No active instance					

PI ProcessBook - [OOE Overview] In Control: Laurie Dieffenbach

File Edit View Insert Tools Draw Arrange Window Help

75%

C:\Laurie's Demo Stuff\Nisqually Creamery Company.piw\OOE Overview

3/17/2010

Organizer

Bookmarks History

- Nisqually Creamery Compar
- Nisqually Creamery Ove
- Issaquah Plant Overvie
- Issaquah Fill
- Issaquah Process
- Issaquah Package
- OOE Summary
- OOE Issaquah Over**
- OOE Process Area
- OOE Line 1
- OOE Line 2
- Mixer Run Times
- SQC for Fill Line
- KPIs
- Long Term Trend
- Multi-Trends
- Write to PI
- Mixer Error Codes
- Recipe Analysis

OOE Overview

Plantwide OEE Target: 100

Plantwide OEE Actual: 46.67

Category	Target	Actual
Fill		
OEE:	19	22.58
Quality:	45	49.74
Utilization:	70	65.65
Rate:		
Target:	7	
Actual:		
Rate:		

Category	Target	Actual
Process		
OEE:	23	55.17
Quality:	60	52.19
Utilization:	75	79.56
Rate:		
Target:	5	
Actual:		
Rate:		

Contacts

Andre Downey

- Notification Subscriptions
 - Andre Downey
 - Laurie Dieffenbach

Filter

- MS Office Communicator Contacts
 - Environmental Reporting
 - Janelle Minich
 - Maintenance Engineers
 - John K. Maytum
 - Process Engineers
 - Laurie Dieffenbach
 - Other Contacts

PI System: PIAF

Options

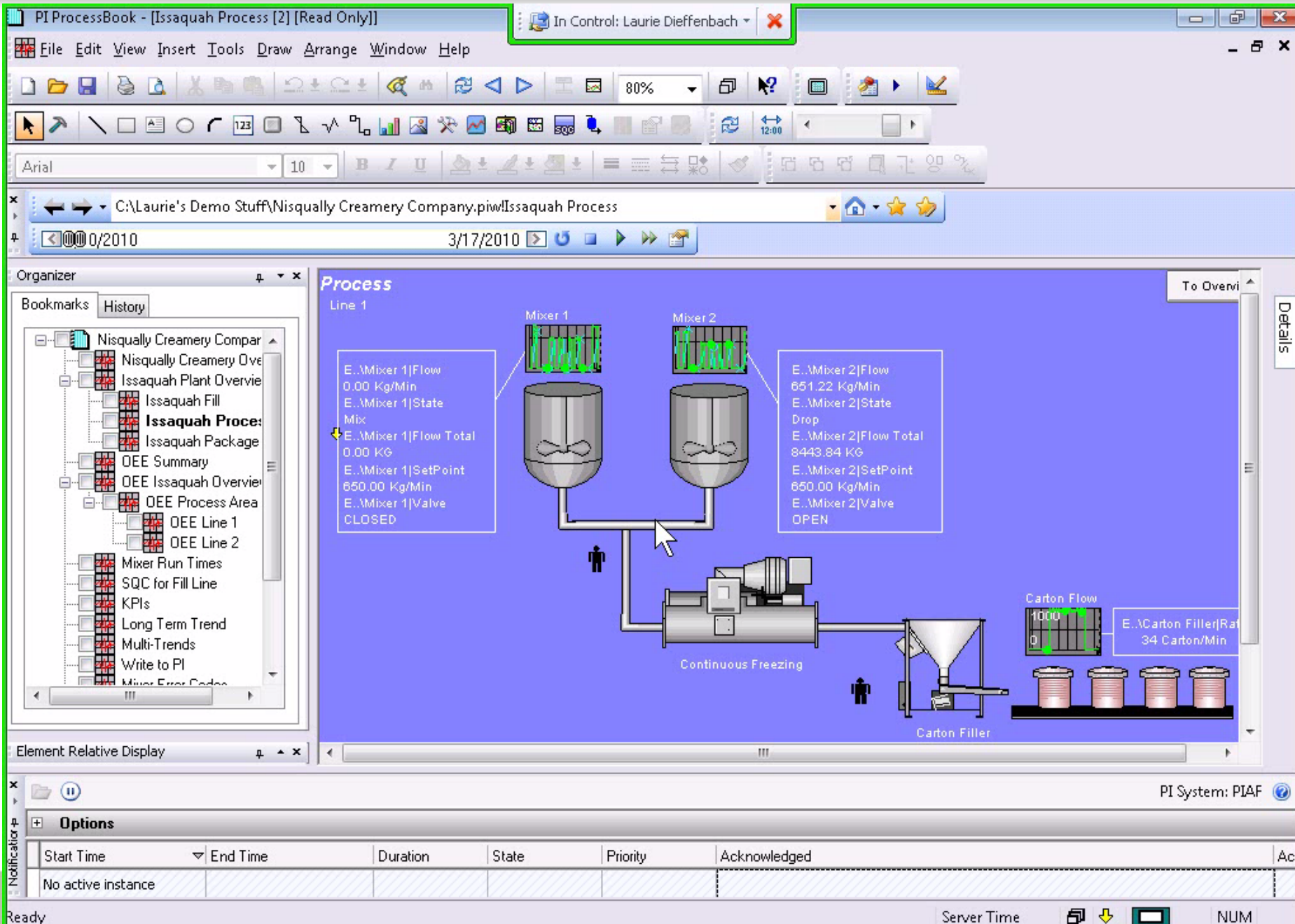
Start Time	End Time	Duration	State	Priority	Acknowledged
3/18/2010 12:29:37 PM	Active	Active	Below Target	Normal	Yes

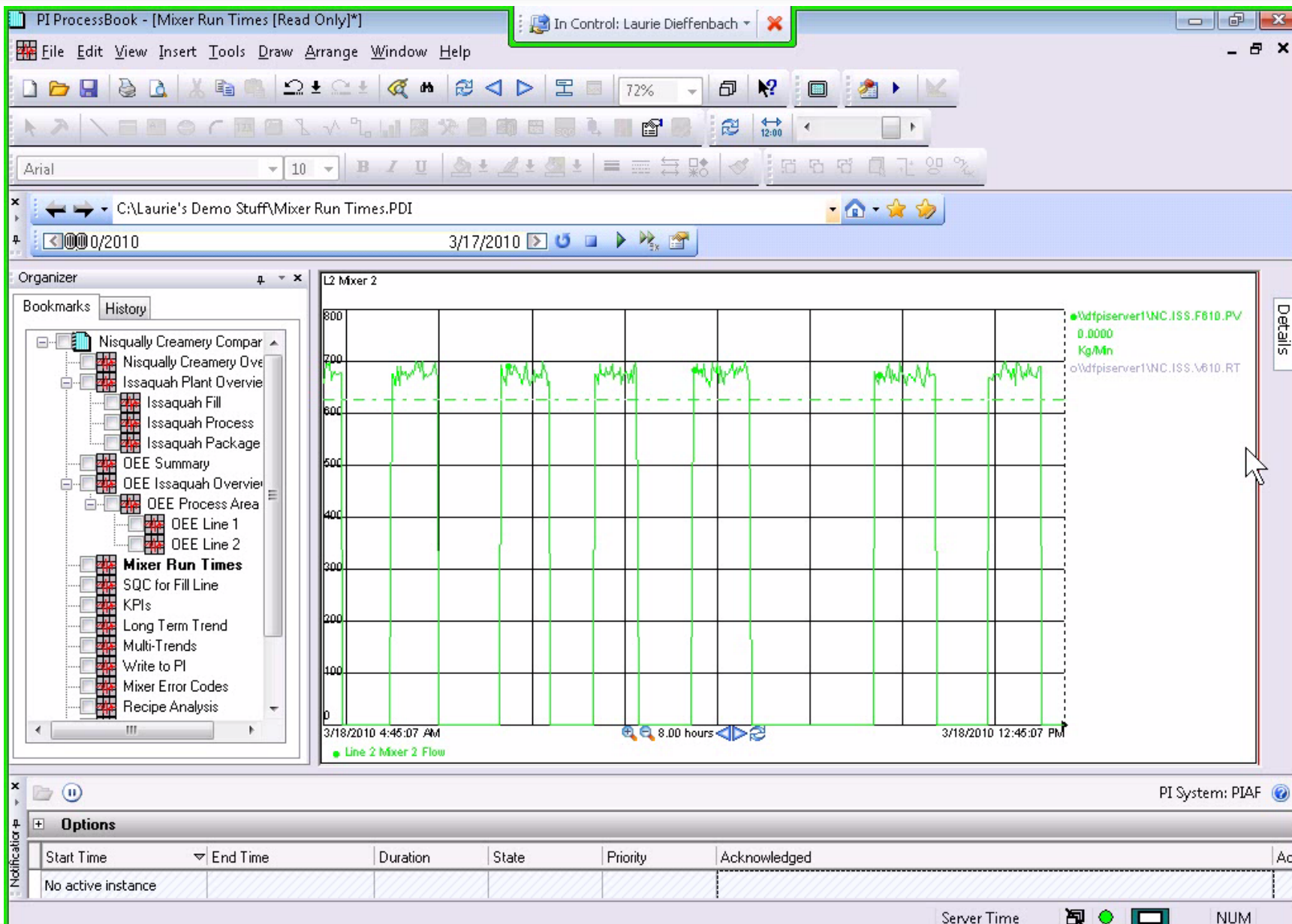
Ready

Server Time

NUM

OSIsoft® UC2010





Feature Recap

- Statistical ToolTips
- Notifications and Contacts
- Office Communicator integration
- Bookmark navigation
- Built-in SQC symbol
- Details with Copy to Clipboard and Annotations
- Data Favorites
- Element Relative Displays
- In-place formatting
- Trend navigation
- Hide/show traces
- Playback
- Regression line
- Trend orientation
- Email screen capture

Technologies Shown in the Demo

- PI ProcessBook 3.2 (released Q3 2009)
- PI Notifications 1.1 (released Q3 2009)
- PI AF 2.1.1 (released Q4 2009)
- PI DataLink 4.1 (released Q2 2009)
- Microsoft Office Communicator 2007 R2
- Microsoft Office Outlook 2007

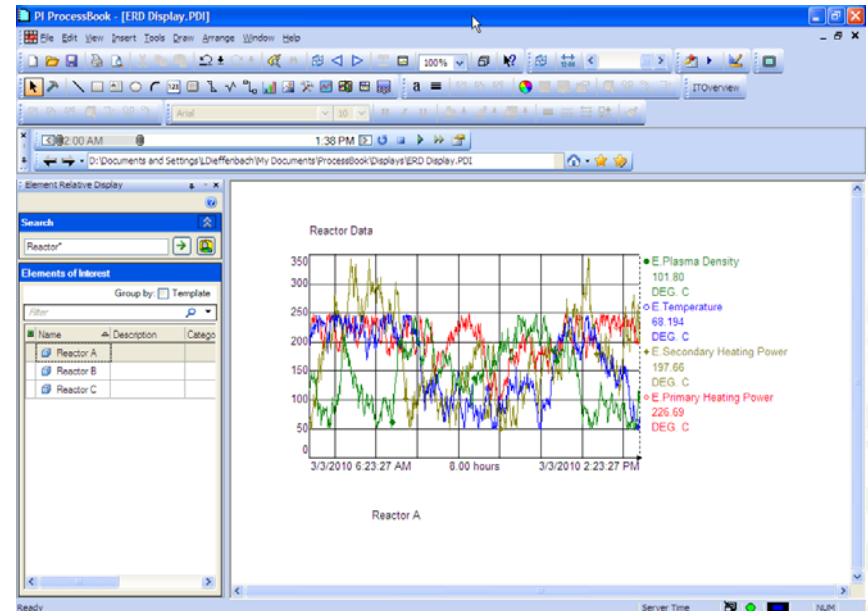
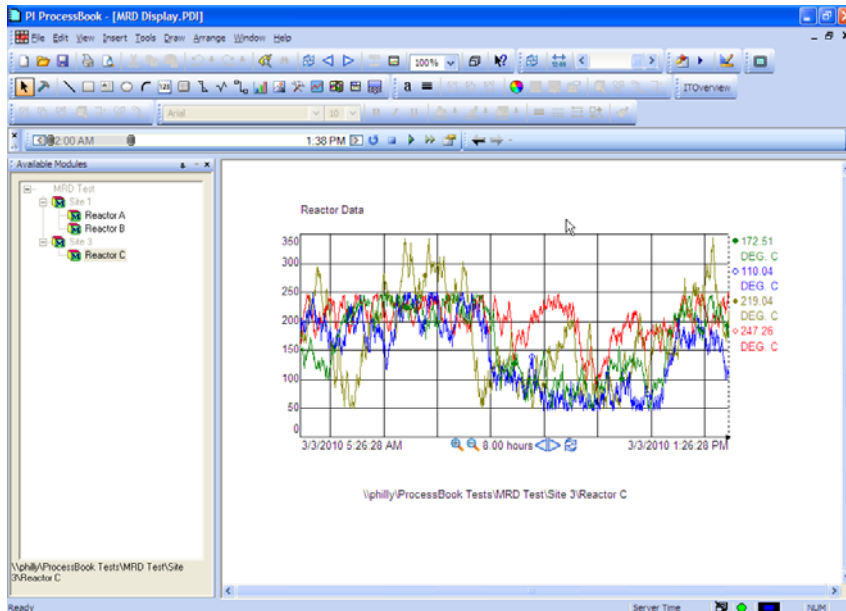
Migrating from MDB to AF

- PI ProcessBook v3.2 is the last version to deliver the Module Relative Display add-in functionality
- Version 3.2 installed the MRD add-in separately, so it can be removed manually, when customers are ready
- If you upgrade directly from v3.1 or earlier to PI ProcessBook 2010, you lose any MRD functionality
- Once the add-in is uninstalled (not just unloaded), the Element Relative Display add-in (ERD) automatically translates MRD displays to use AF when the display is opened, if the content has been migrated by the PI Server
- If the data migration isn't done, the MRD display will fail to load data.
- The ERD add-in only looks in one AF server for data to populate an MRD display
- PI WebParts automatically translates MRD displays to use AF

Not supported by ERD (yet)

- BatchView symbols using relative module paths do not have AF equivalents. The symbol will gracefully fail.
- DataSheet Control displays using relative module paths do not have AF equivalents. The control will gracefully fail.
- IT Monitor displays created with IT Overview will retrieve data from the Module Database, the data is not migrated to AF automatically.

Before and After



Why Use ProcessBook 3.2?

- Use the available tools in PI ProcessBook to solve problems together faster
- Data South Systems (Diamond sponsor) GrITS product to automatically convert existing DCS displays for use in ProcessBook

OSIsoft®

UC2010

OSIsoft Partner



ProcessBook Player

- Addin from DevNet
- All displays required trends
- Replay graphical displays
- ProcessBook player functionality is now embedded in ProcessBook 3.2

Operator Graphics in ProcessBook

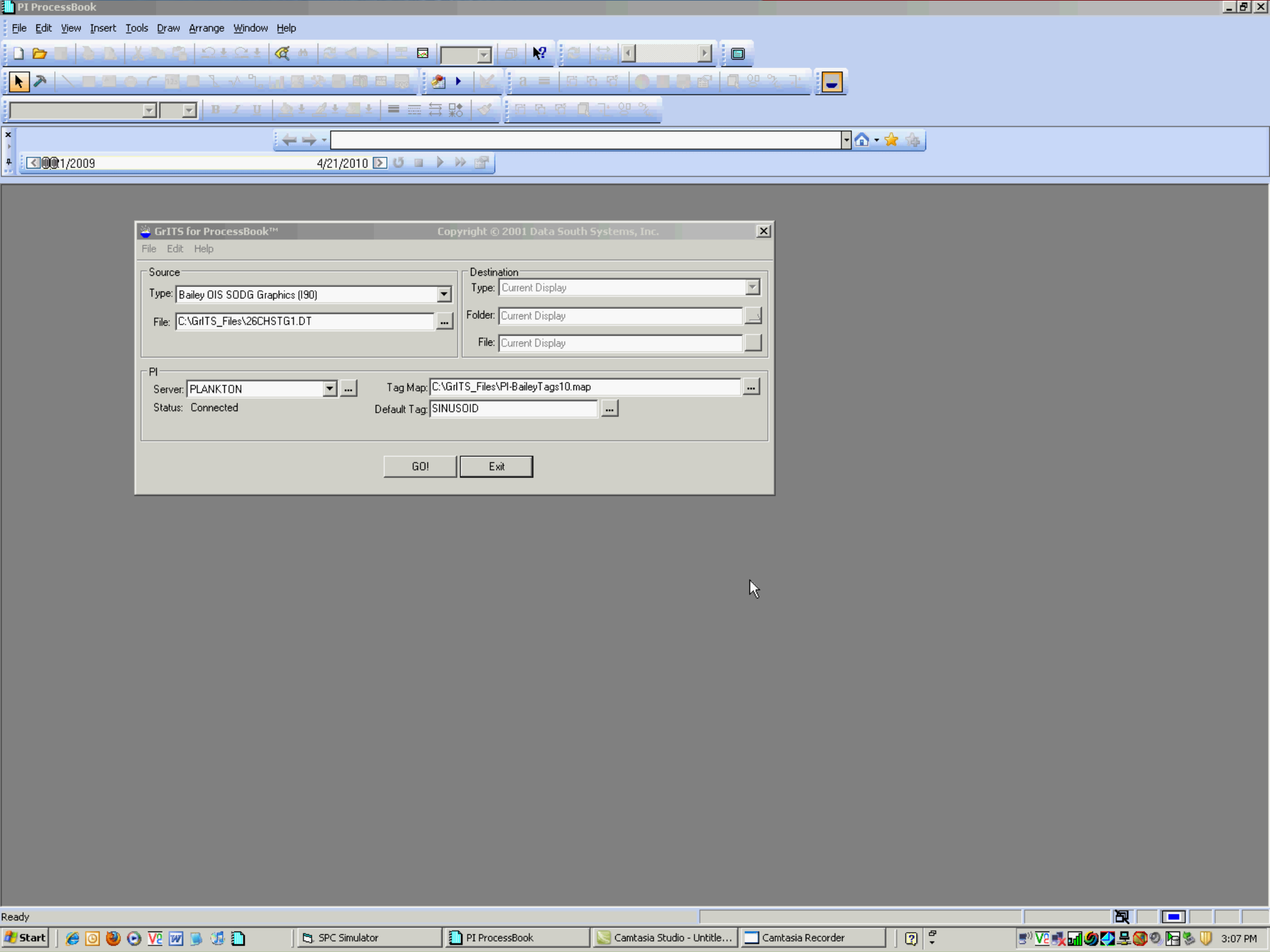
- Graphics are a window into the control room
- Operator Displays in ProcessBook bridged the gap between DCS and PI systems
- Users can view trends based on display images, not tag names (ad hoc trends)
- Drill down into plant processes from familiar operator displays

Leverage graphics with player

- Replay upset or positive conditions
- Utilize graphics for training opportunities
- Control logic review
- Instrumentation validation and analysis
- Corrective action and problem prevention

GrITS for ProcessBook

- DCS tag to PI Tag matching
- All primitive drawing elements converted (lines, polylines, polygons, arcs, ellipses, etc.)
- Dynamic elements converted:
 - Values
 - Bar graphs
 - Trends
 - Multistates
- Navigation links – display drill-down
- 100% PI ProcessBook and PI WebParts compatible
- Ad-hoc trending from Operator Displays



DVR for your DCS

Next Steps

- Upgrade to PI ProcessBook 3.2 right now
 - Learning Labs on Thursday
 - Developer Booth in Product Expo
 - DSS Partner Expo on Thursday morning
- PI Server 2010 Talk
 - Prepare for Module Database to AF migration



OSIsoft®

UC2010

Real Time Information — Currency of the New Decade

Thank you

© Copyright 2010 OSIsoft, LLC., 777 Davis St., San Leandro, CA 94577