

Event Frames

Presented By:

Chris Nelson, OSIsoft
Chris Coen, OSIsoft

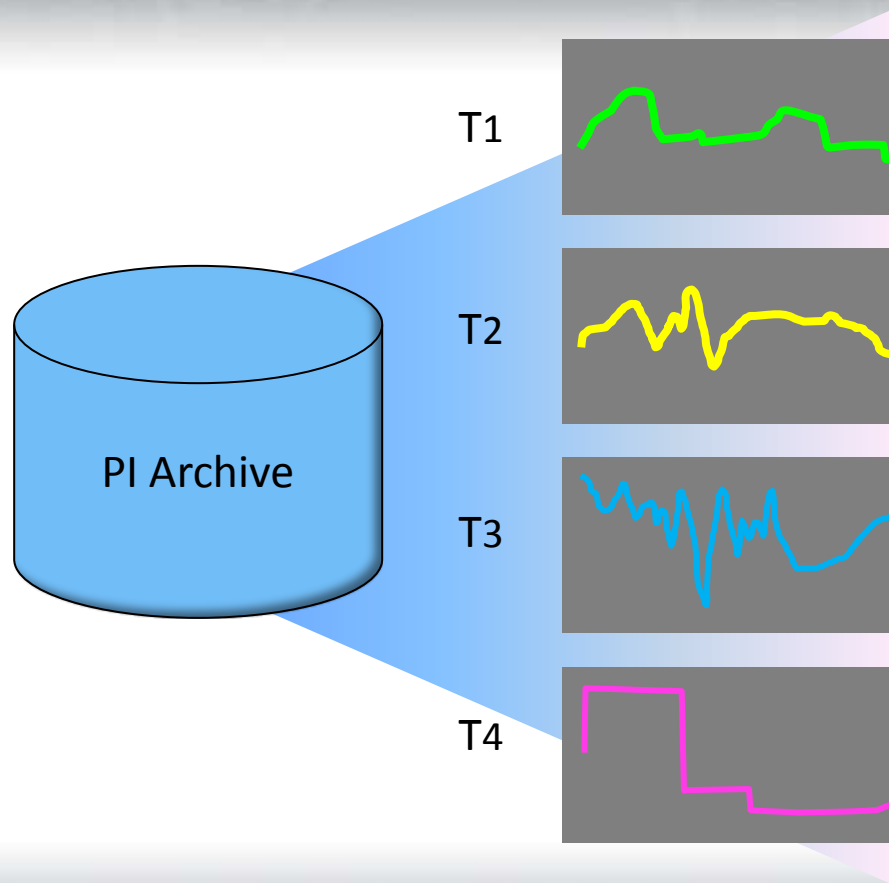


OSIsoft®

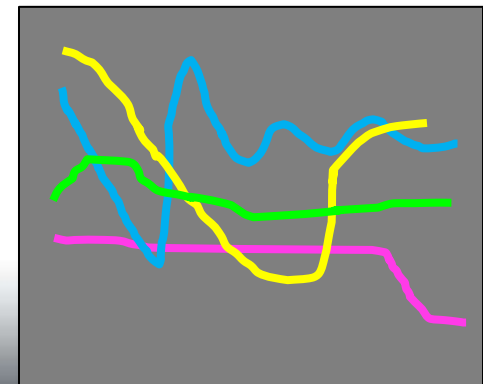
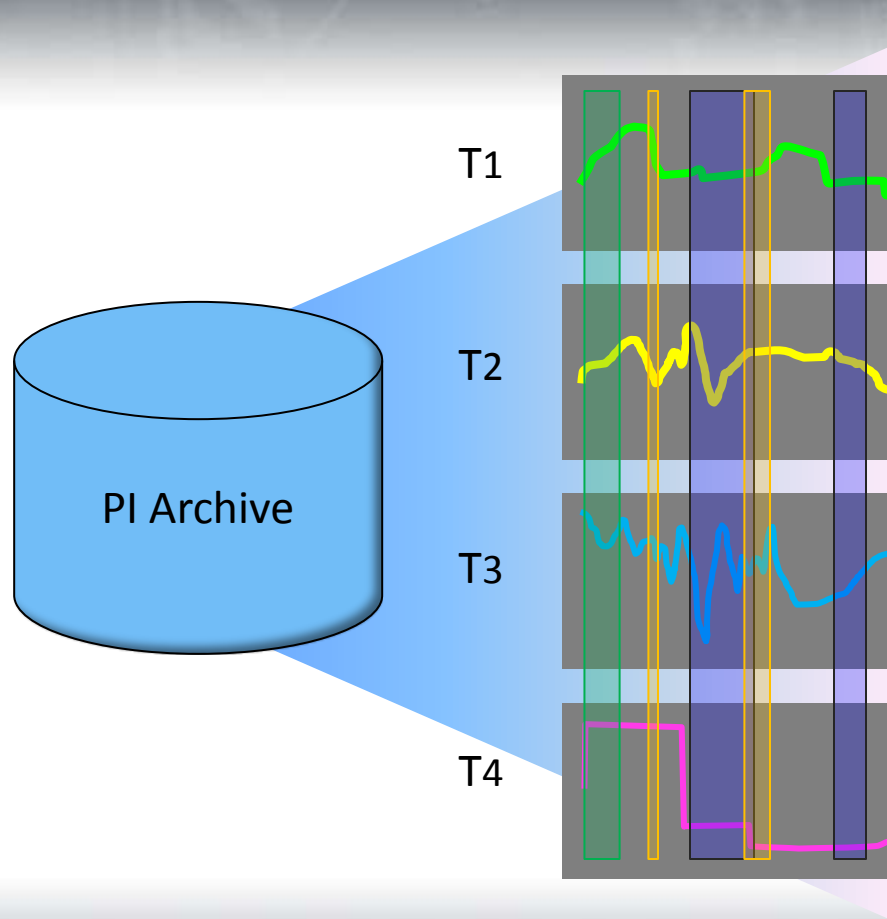
Agenda

- Vision
- Architecture
- Demonstration
 - Searching
 - Substitution Parameters
 - Security
 - Batch Interface Demonstration
- AF 2010 Update





Event Frames provide context



OSisoft®

Event Frames Vision

- Event Frames relate time series data to the events occurring on your plant floor and in your business.
- You can index the important events, look them up, analyze them and find trends across your events.
- This is ***the way*** to index your time series data.



Event Frame Definition

- A time series data type defined by two times and optionally accompanied by supporting data
- Any event in your process:
 - downtime event
 - incident event
 - material transfer event
 - equipment maintenance event
 - batch processing step
 - specific investigation
 - six-sigma project
 - electrical power outage
 - safety incident
- Any time range or repeatable set of time ranges:
 - shifts
 - day
 - week
 - month
 - year to date
 - etc.



Templates (AF)

Template

- Compressor
 - RPM
 - Pre Pressure
 - Post Pressure
 - Pressure Delta
 - Manufacturer

Instance

- Compressor 3
 - C1-3.RPM
 - C1a-3.P
 - C1b-3.P
 - =Post Pressure – Pre Pressure
 - GE

Event Frame Templates

Template

- Downtime
 - Start time
 - End time
 - Asset
 - Reason Code
 - Comment

Instance

- Downtime
 - 9/13/2010 10:00am
 - 9/13/2010 10:30am
 - Compressor 3
 - Planned outage
 - Routine inspection

Event Frame Templates

Template

- UnitProcedure
 - Lot number
 - Start time
 - End time
 - Unit
 - Product

Instance

- UnitProcedure
 - 45-5199-SP32
 - 9/10/2010 8:00am
 - 9/10/2010 10:30am
 - Reactor 3
 - Special prepolymer 32

CTP on vCampus

AF 2.1 – Nov. 2009 @ vCampus Live!

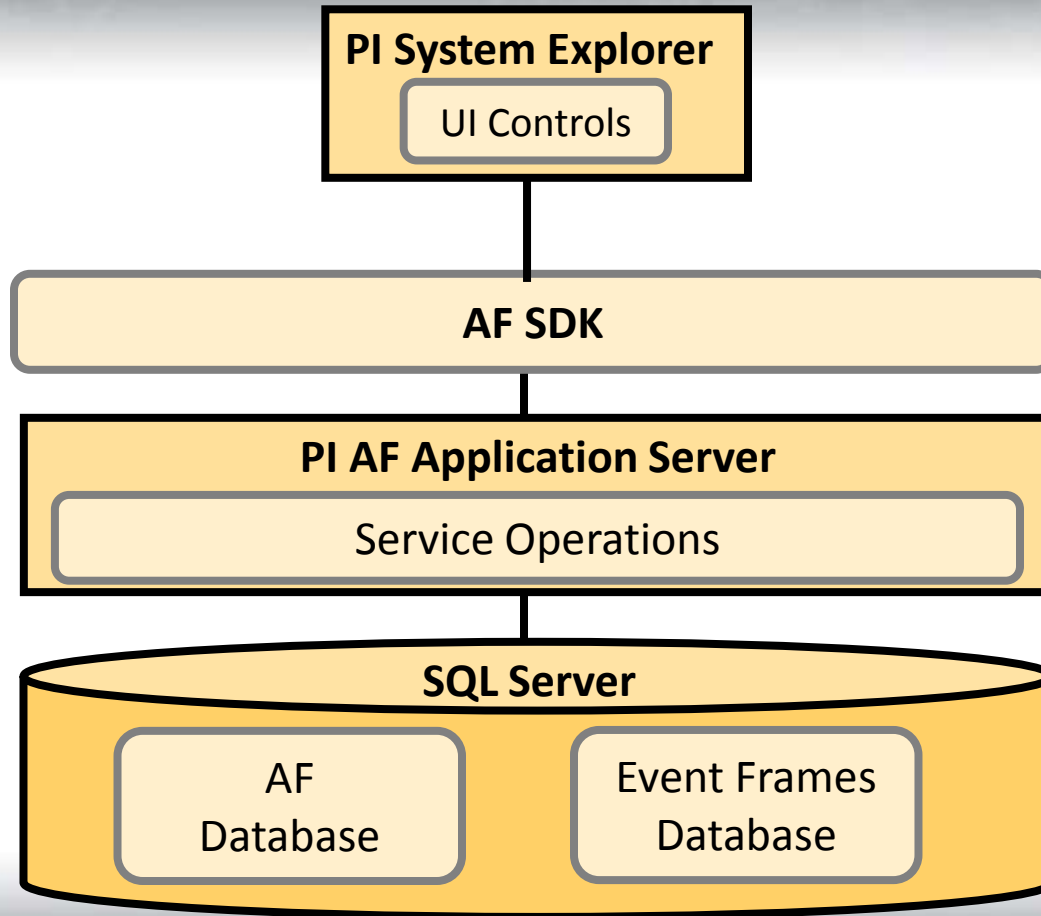
- EventFrame Datatype
- EventFrame Templates
- Referenced Elements
- Allowed Reference Types
- EventFrame Search methods
- Enhanced database schema

AF 2010 (v2.2)

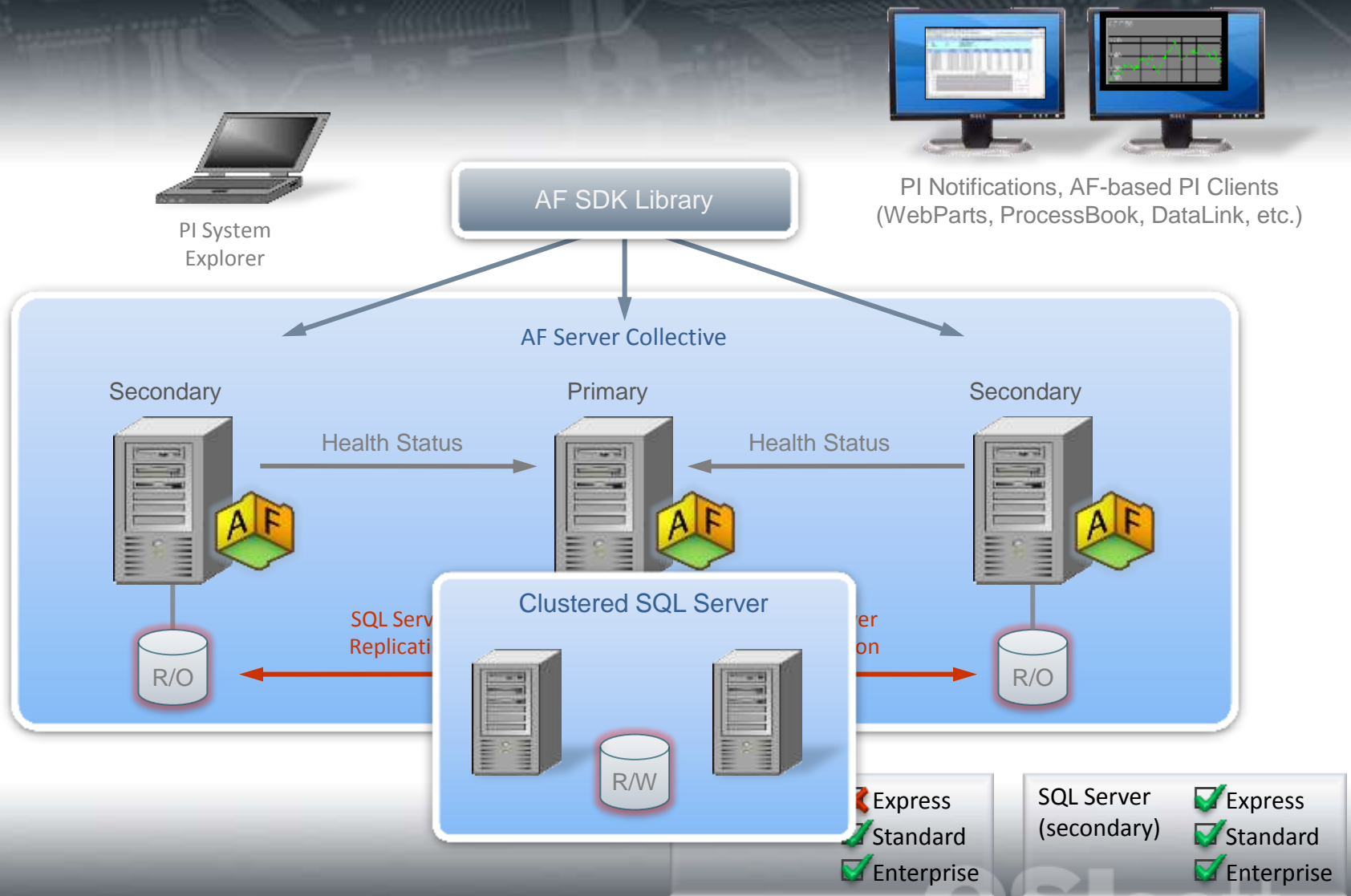
- FindDatabaseChanges()
- Bulk Loading enhancements
- LoadEventFramestoDepth
- Enhanced performance of FindEventFrames & FindEventFramesByAttribute
- Many more smaller defect resolutions and performance increases



PI AF and Event Frames Architecture



PI AF Architecture



Demonstration Agenda

- Event Frame Downtime Simulator Overview
- Event Frame Search Examples
- Using Substitution Parameters
- Event Frame Security

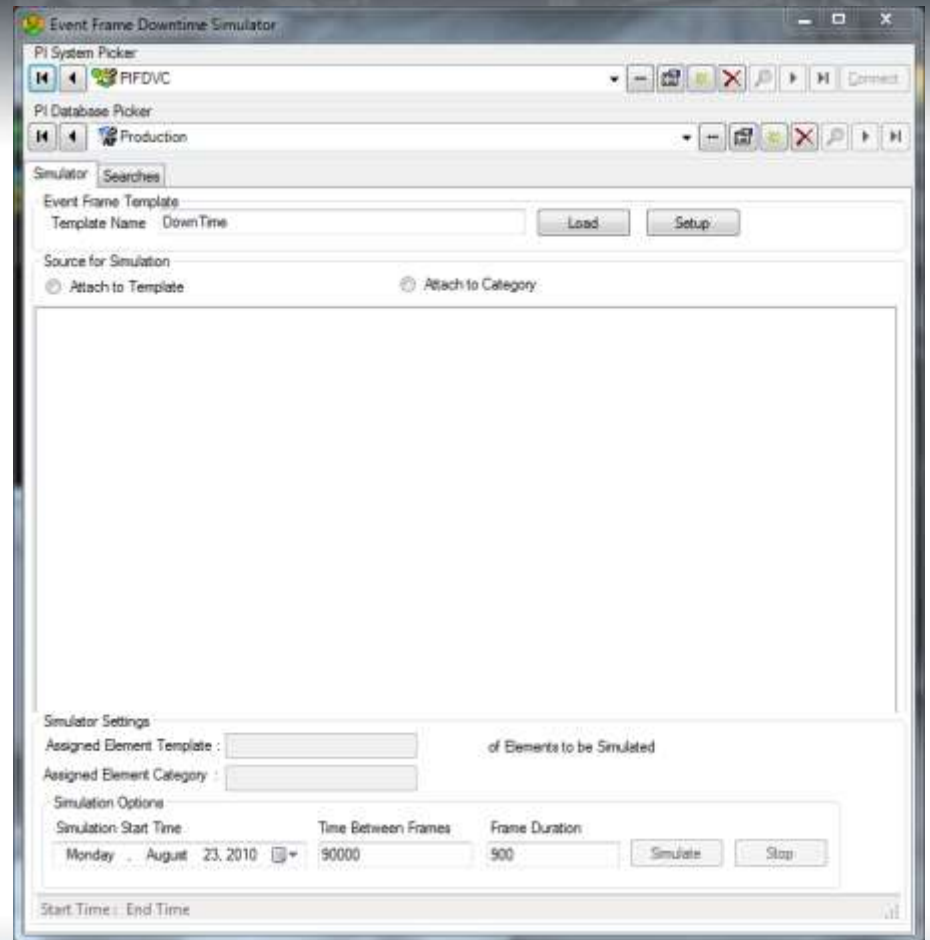


Substitution Parameters

- Requested Feature on vCampus!
- [Discussion Hall › Development with OSIssoft SDKs › Event Frames Development › Using Substitution Parameters](#)
- %Element% - resolves to the PrimaryReferencedElement Property
- %EventFrame% - resolves to the Event Frame Name



Event Frame Downtime Simulator



OSIsoft®

Event Frames Resources

- See our partners present on Event Frames tomorrow @ 2:30pm
- Try out Event Frames in the Learning Labs on Wednesday
- See the vCampus Blog and Discussion group on Event Frames
- Try the CTP on vCampus and give us feedback!





Thank You!

OSIsoft®