



Unlock your Data with PI Data Access

Presented by

Steve Pilon, Product Manager, OSIsoft

Unlocking Data?

- Getting the **right data**, at the **right place**, at the **right time**
- By connecting **people** and your **systems** together
 - Connectivity, visibility, interoperability





Business Challenges

Disparate systems

- Acquired independently, over time
- Different departments/units

Domain, industry, or user-specific needs

- PI System is an infrastructure

Many different targets

- Diverse types of workers
- Different platforms, media

Unlocking PI System Data?

- LoB Systems/Databases
- Orchestration/Workflows
- Web/Non-Windows Platforms
- Analysis/BI/Reporting
- Custom Applications



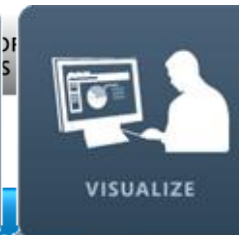
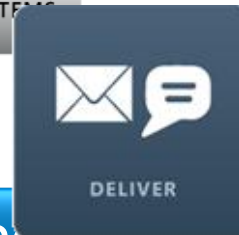
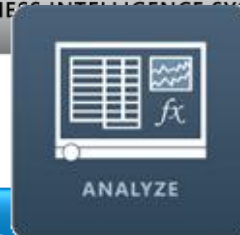
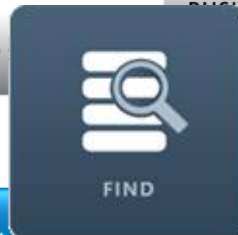
Custom Downtime Analysis Engine

Automated Ordering to Suppliers

The Products



BUSINESS INTELLIGENCE SYSTEMS



SQL Family | Web Services | OPC Servers | OSisoft SDKs

AVAILABLE
ENTERPRISE
INTEROPERABLE
SECURE
SERVICES



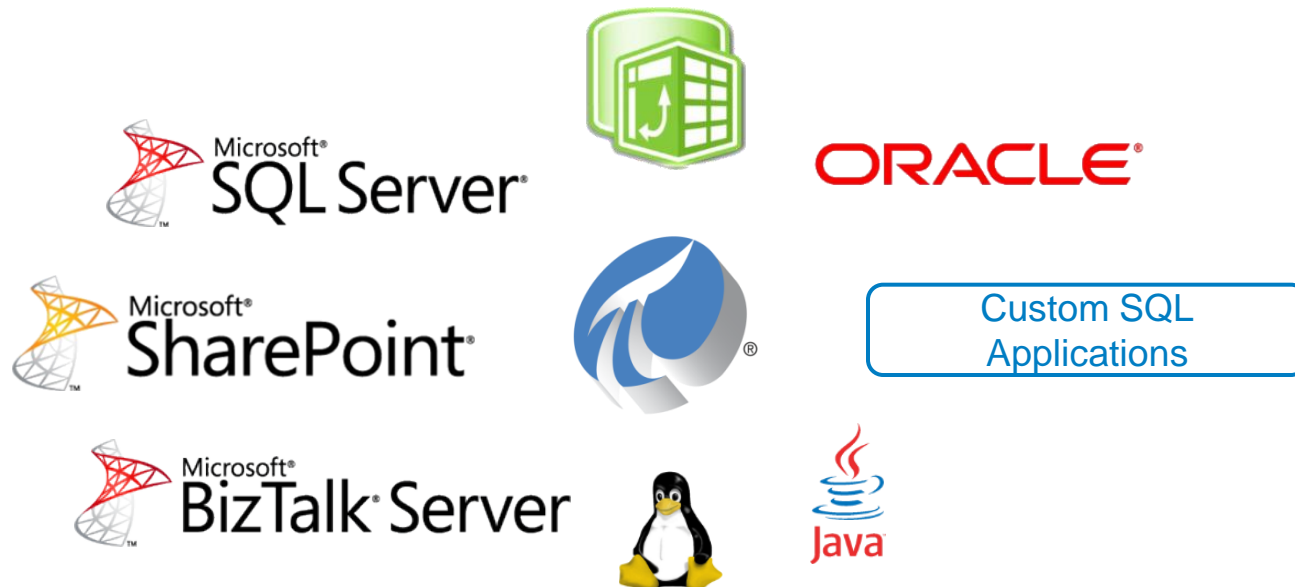


The last year in Summary

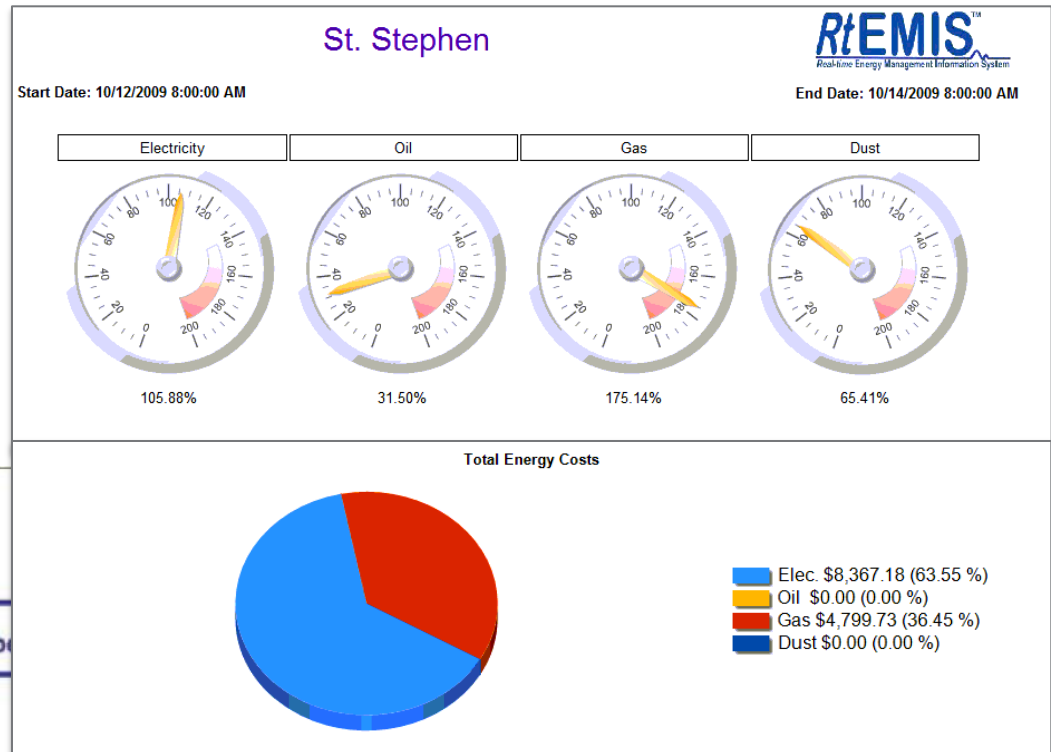
- **Brand new products:**
 - PI JDBC Driver
 - PI OLEDB Enterprise
 - PI Web Services
- **Going the 'asset' way**
- **More support for non-Windows and distributed environments**

The SQL Family

- Set of drivers that expose PI System data in a relational **database view** (OLE DB, JDBC, ODBC)
- Database systems integration, analysis, BI, reporting, Linux



Energy Management



RtEMIS Reports

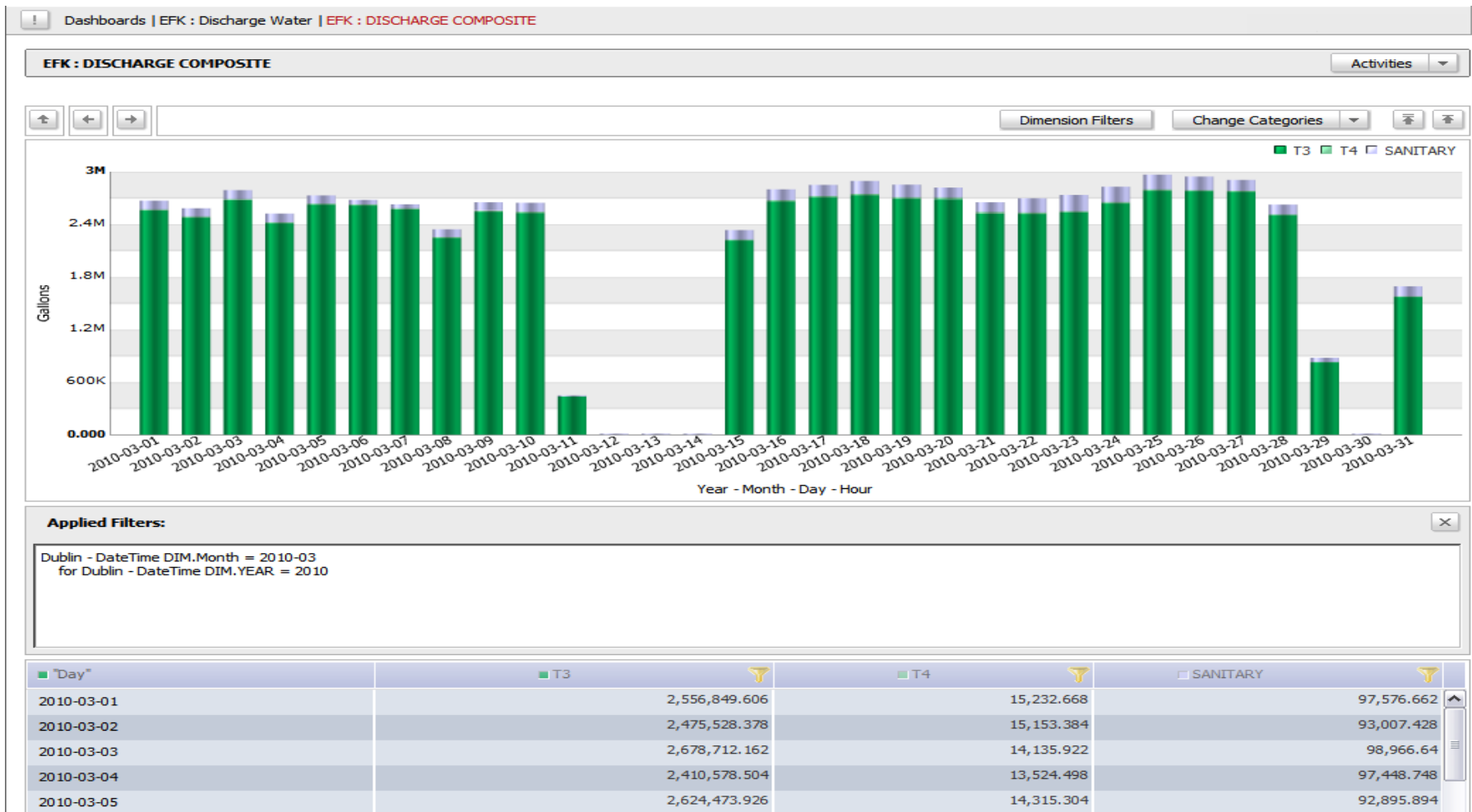
Access RtEMIS Reports

- St. Stephen
 - Fibrex
 - Fiber1
 - Boiler
 - Dryer
 - Dry Resin
 - Press
 - Refiner
 - RMS
 - Unaccounted: INACTIVE
 - Fiber2
 - Refiner
 - Boiler
 - Dryer**
 - Dry Resin
 - Press
 - RMS
 - Unaccounted: INACTIVE
 - RA Filter
 - Particleboard

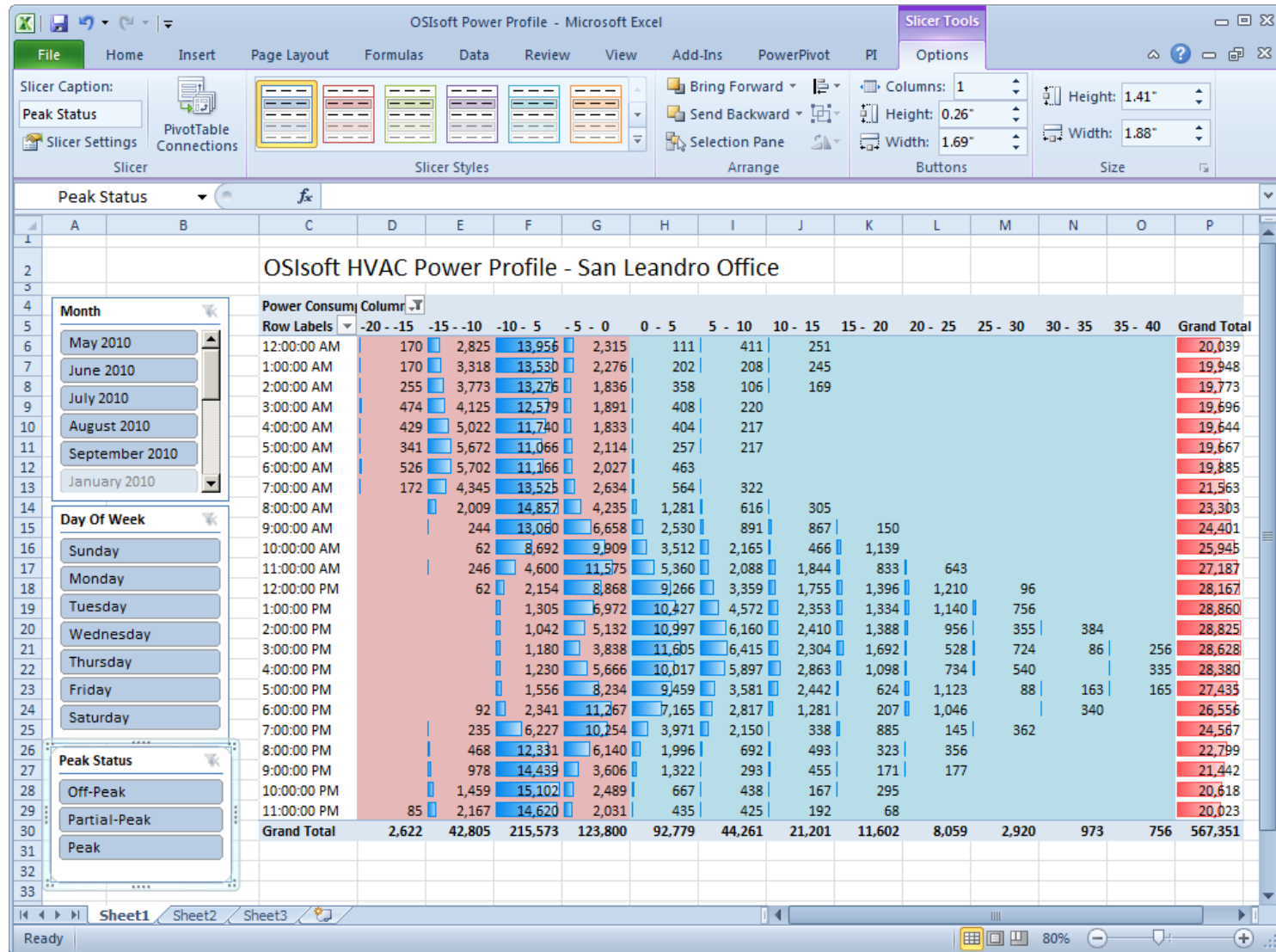
St. Stephen - Fibrex - Fiber2

Time Range Report:
KPI Report:
Gas Report:
Oil Report:
Dust Report:
Cumsum Report:

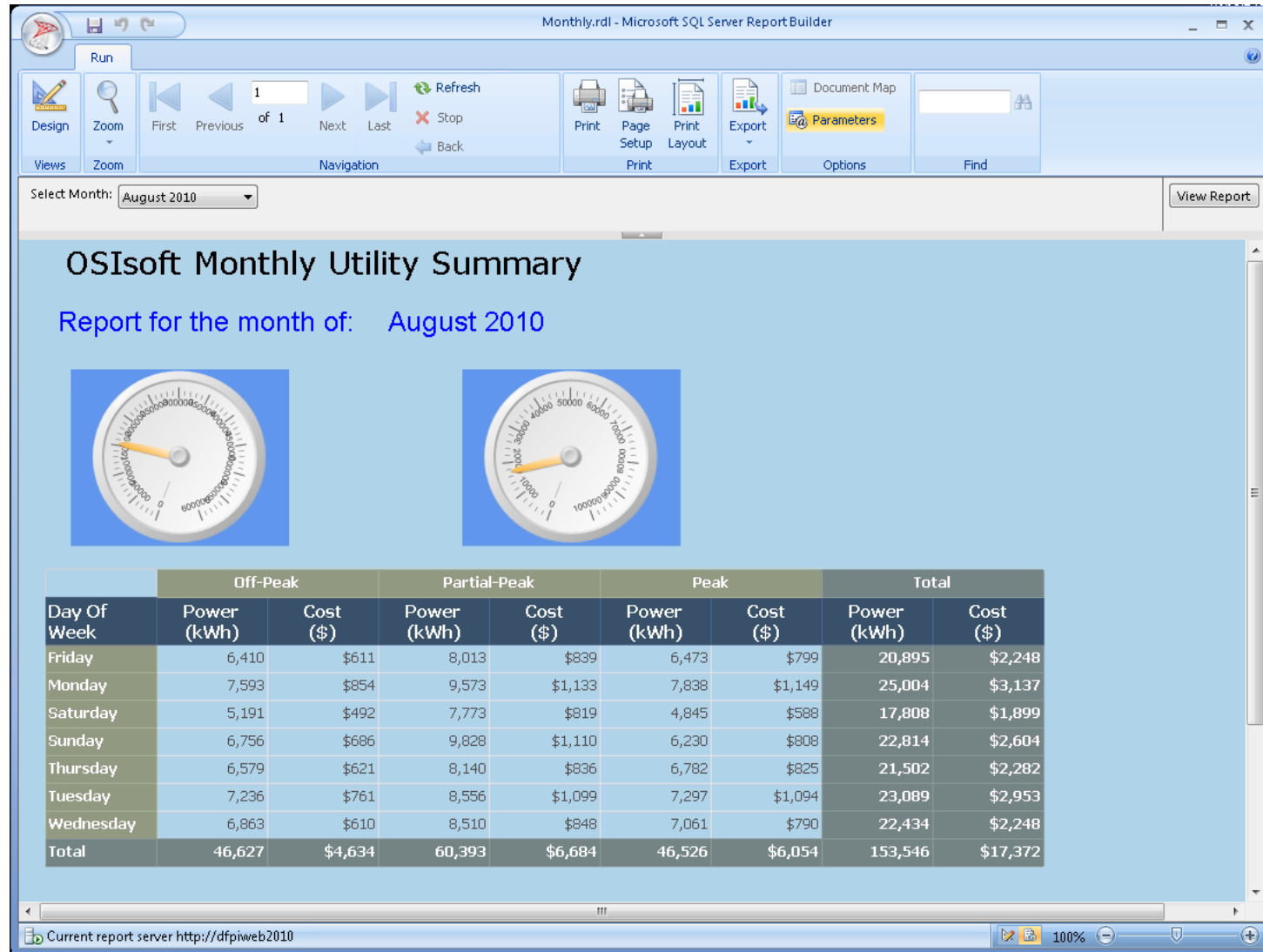
Environmental Analytics



Cost Profiling



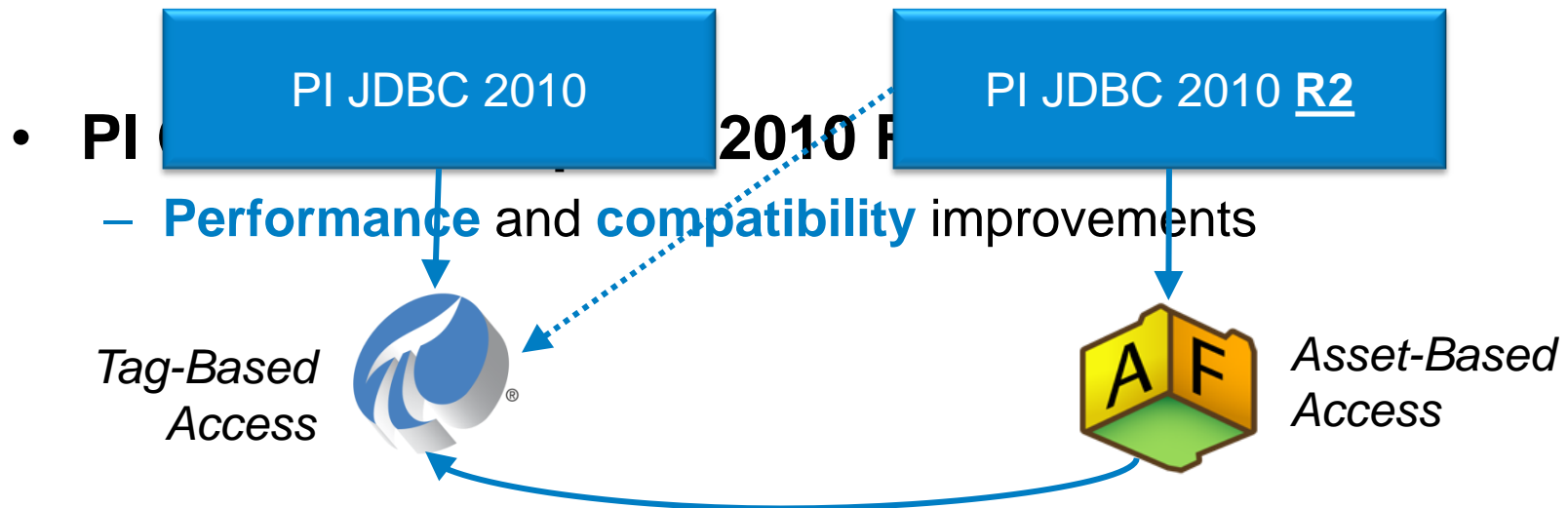
Reporting



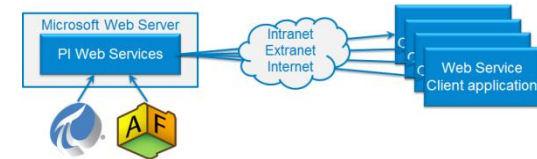
New in our SQL Family

- PI JDBC 2010 R2

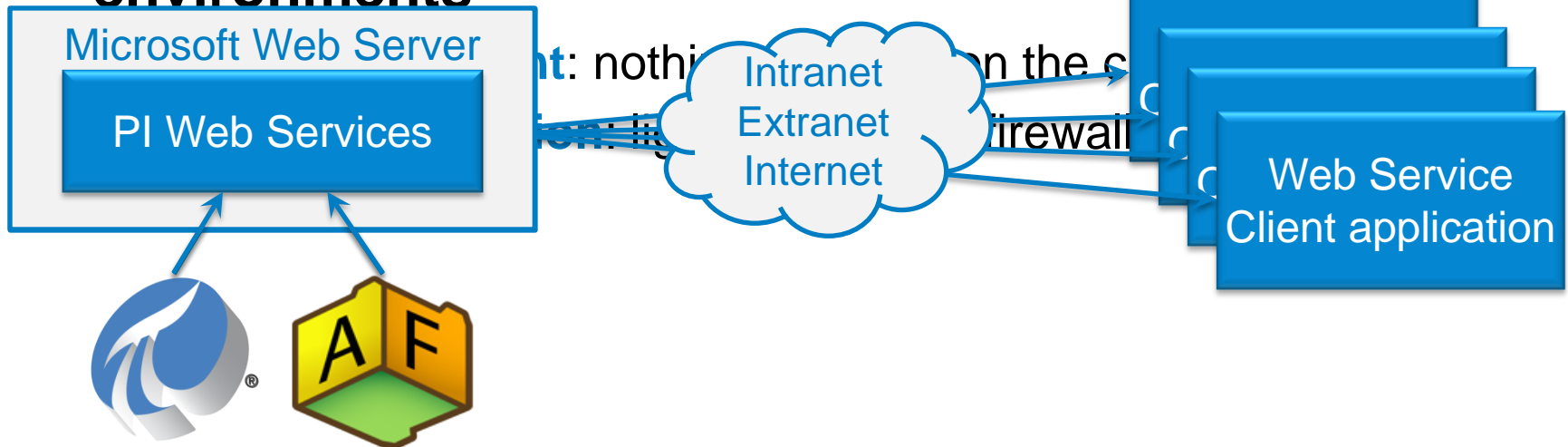
- Go **asset**-centric
- **Performance** enhancements (e.g. bulk write operations)



PI Web Services



- Access to PI System data using standard **web service** technologies
- Facilitates data access over **secure** and **distributed** environments

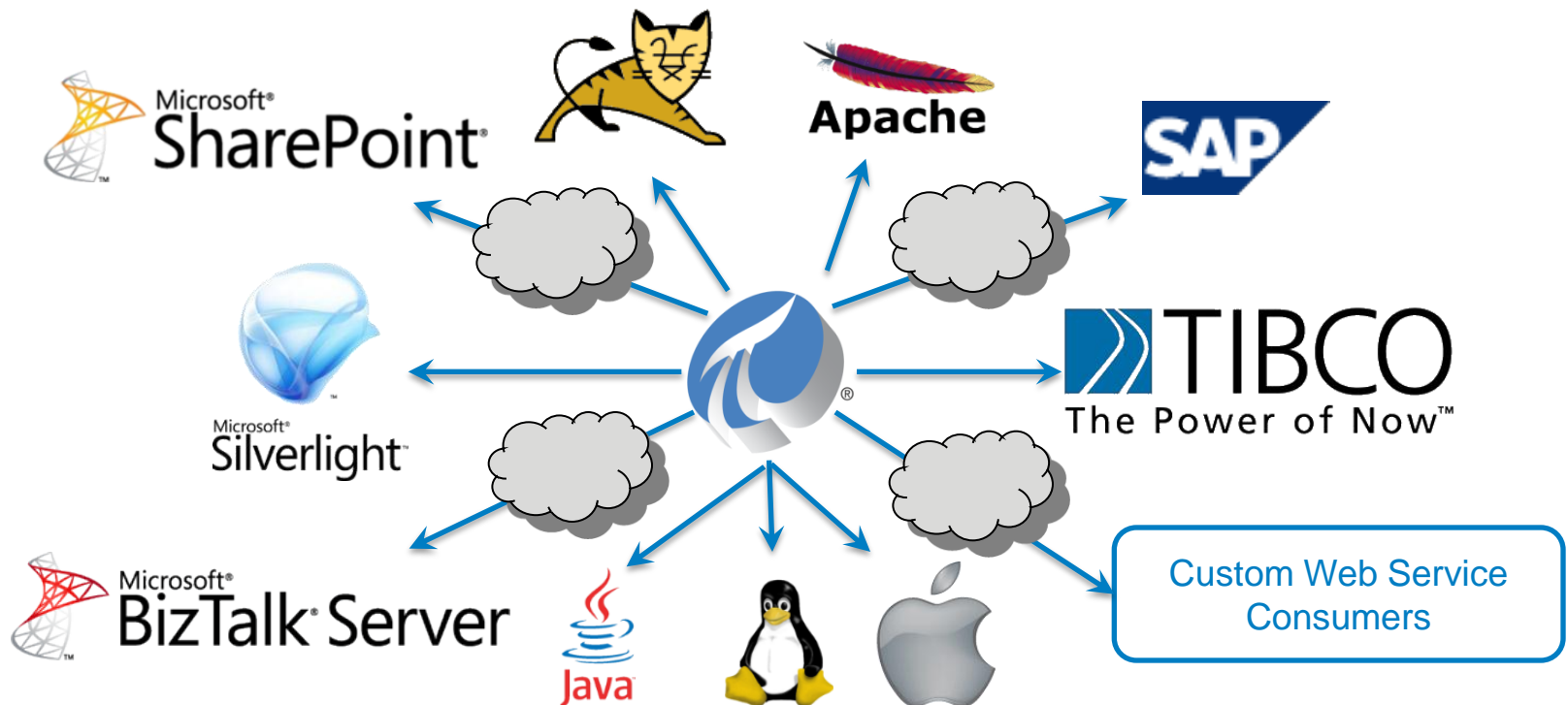


Use Cases

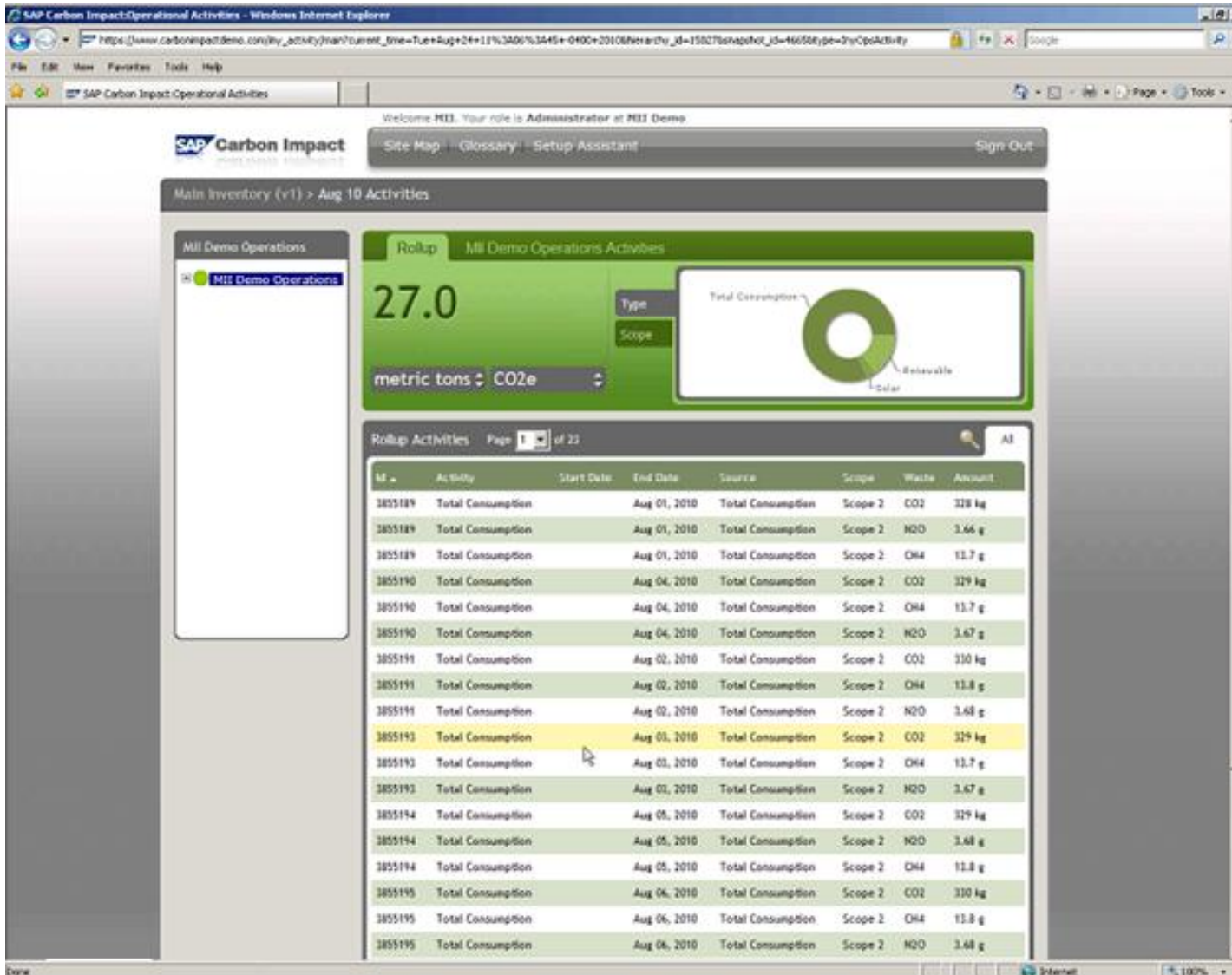
Web-based
visualization

Integration with
business systems

Non-Windows
environments



Carbon Impact Management



Geospatial + Timeseries Data Mashup





New in PI Web Services 2010 R2

- **2 new methods**
 - Simplified 'Get Snapshot'
 - Tag Search
- **Support for additional data insert modes**
(e.g. replace)
- **Support for additional AF Attribute types**
(e.g. formula, table lookup)

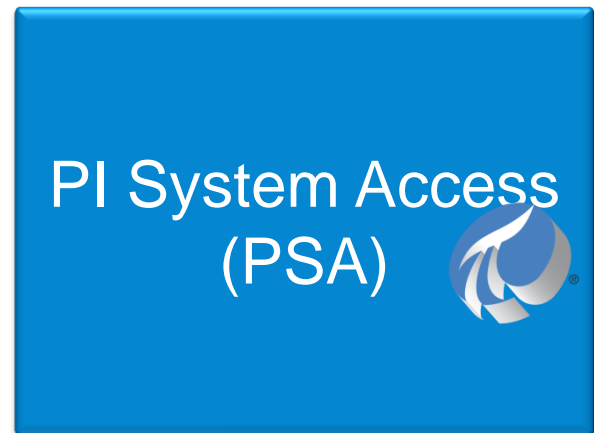
What's coming next



How to get PI Data Access

```
ATimeRange tr = new ATimeRange(new ATime(text),
AFValues vals = _afDB.Elements["Pump123"].Attribute
all)

lstValues.Items.Clear();
foreach(AFValue val in vals)
{
    lstValues.Items.Add(val.Value.ToString() +
    time license
}
```



OSIsoft Virtual Campus (vCampus)

• Online,

- Software
- Focus
- Partner
- Exclusive technology

• Personal

- Development products

The screenshot shows the OSIsoft Virtual Campus (vCampus) website. At the top, there is a navigation bar with the OSIsoft logo and the text "OSIsoft. virtual campus". Below the navigation bar, there is a large banner image showing a stylized cityscape with various buildings. The main content area is divided into three columns:

- WHAT IS OSISOFT VIRTUAL CAMPUS?**

OSIsoft vCampus is a **subscription-based**, online offering that consists of providing everything people need to **develop applications** on the PI System. Focusing on 'doing it right', this **community-oriented** program provides each of its subscribers with:

 - Personal development **PI System**
 - **Community** experience with discussion **forums** and **blogs**
 - Online **library** and **courses**
 - Technical, interactive **webinars**

OSIsoft vCampus is intended to facilitate and
- EVENTS**

[27-Apr-11] vCampus webinar: **PI Event Frames - Infrastructure to find data relevant to your Events** (Register here)

[23-Mar-11] vCampus webinar: **PI ACE 2010 R2 in action** (Register here)

[23-Feb-11] vCampus webinar: **PI WebParts, What's New since version 2.2?**

[26-Jan-11] vCampus webinar: **PI System 101 - Security**

[22-Dec-10] vCampus webinar: **PI System 101 - What makes time-series data and PI special**
- NEWS**

[13-Jan-11] Official OSIsoft Facebook and Twitter can be accessed via <http://tinyurl.com/OSIsoftFacebook> and @OSIsoft_News.

[28-Mar-11] OSIsoft annual Users Conference will hold Mar 28-30, 2011 in San Francisco. Submit papers or register now!

[17-Nov-10] A video tour of the OSIsoft vCampus has been posted here and is accessible to the whole Internet. Please don't hesitate to share it with **anyone** interested.

[16-Nov-10] PI Asset Framework (AF) 2010

soft.com
ft.com
yCampus

OSIsoft vCampus Live! 2011

- The annual in-depth technology event!
- For everybody technical: system administrators, integrators, developers and architects



Stay tuned for details of registration and agenda, to be published soon at <http://vcampus.osisoft.com> !



What else to look at?

- **Business Intelligence with the PI System & PowerPivot**
 - Wednesday @ 11:00
 - Watch the recording!
- **OSIsoft vCampus Community: At Your Service**
 - Wednesday @ 15:30
 - Watch the recording!
- **OSIsoft vCampus Program**
 - <http://vCampus.osisoft.com>
 - Take the tour!



Thank you



OSIsoft®