

A decorative graphic on the left side of the slide, consisting of a large, irregular shape composed of many small blue triangles. The triangles are arranged in a way that creates a sense of depth and movement, with some triangles pointing towards the center and others pointing away from it. The overall effect is a dynamic, geometric pattern that frames the main text.

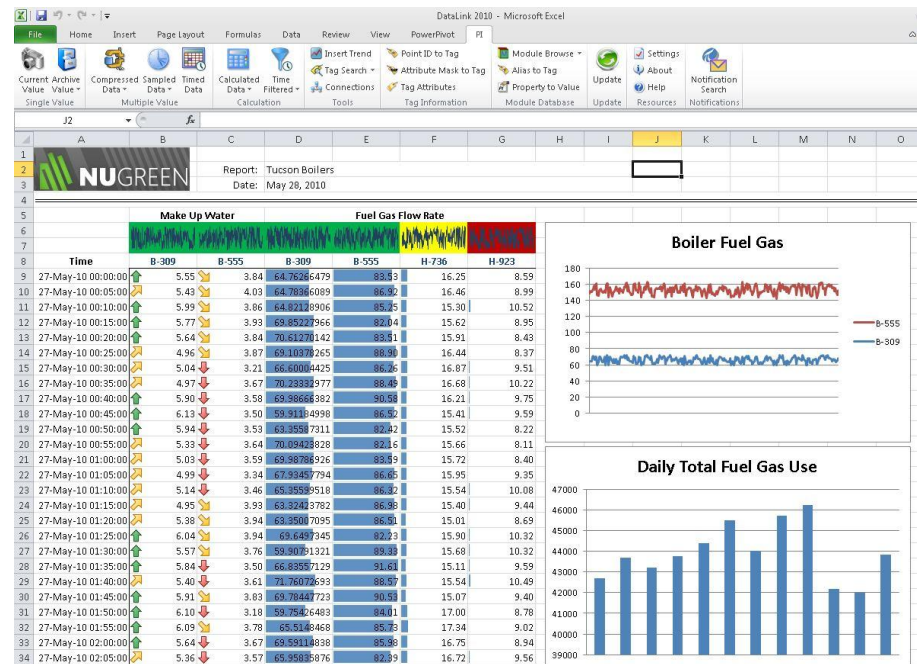
Asset Centric PI DataLink meets PI AF

Presented by
Frank Batke
Senior Customer Support Engineer
OSIsoft

PI DataLink

Add-in to Microsoft Excel to retrieve PI System data, create reports, perform calculations, and do analysis in a familiar environment

OSIsoft's most popular product by installations





New Features

- Integration with PI AF

“I want to access my PI System data without having to know about tags.”

- Search

“I want to find relevant information quickly and easily.”

- **Excel 2010 64-bit support**

“I want to leverage my investment in the latest technologies to maximize my productivity.”

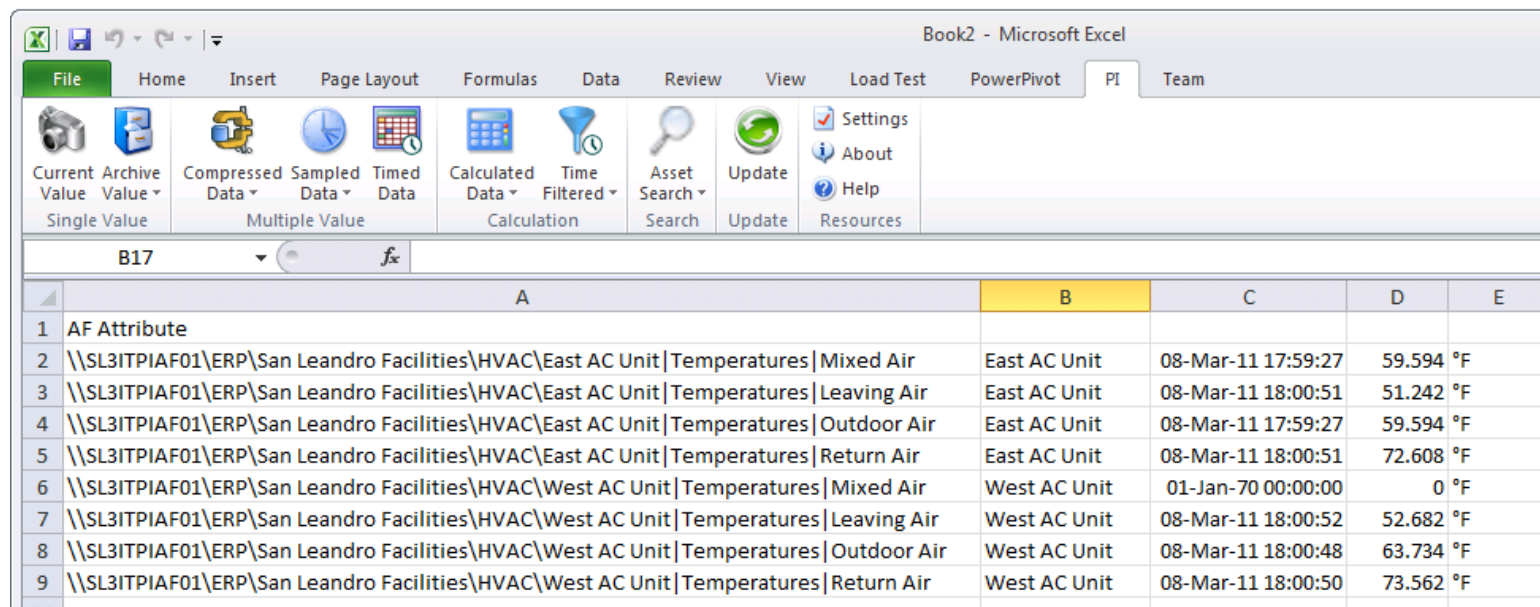


Disclaimer

PI DataLink is still under development. While the product is close to its final state, the exact implementation of features and functions, look and feel, are still subject to change.

Integrated PI AF Experience

You already know how to use it ...

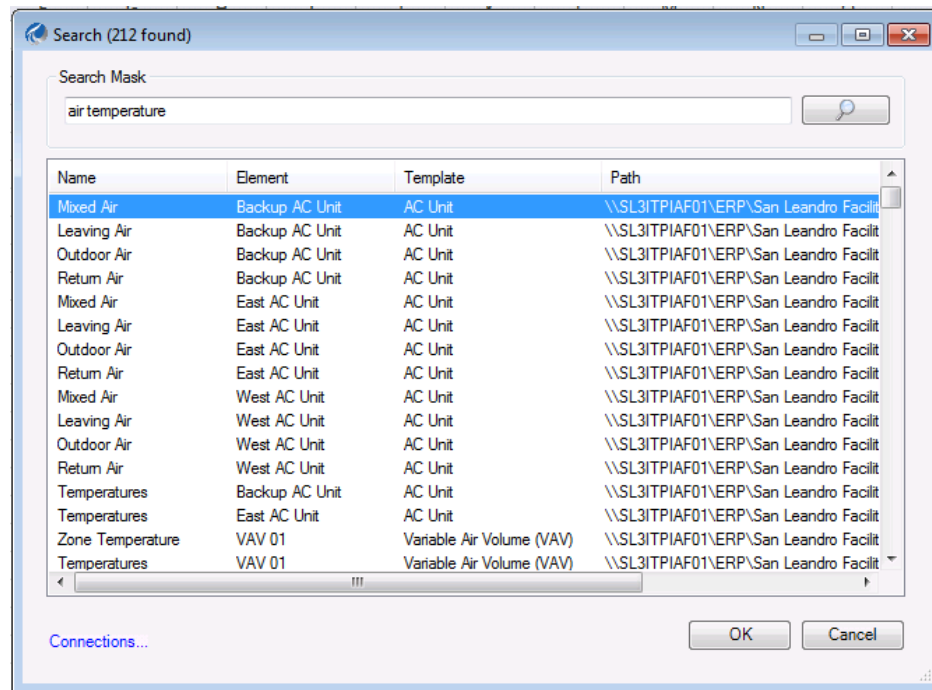



	A	B	C	D	E
1	AF Attribute				
2	\\SL3ITPIAF01\ERP\San Leandro Facilities\HVAC\East AC Unit Temperatures Mixed Air	East AC Unit	08-Mar-11 17:59:27	59.594 °F	
3	\\SL3ITPIAF01\ERP\San Leandro Facilities\HVAC\East AC Unit Temperatures Leaving Air	East AC Unit	08-Mar-11 18:00:51	51.242 °F	
4	\\SL3ITPIAF01\ERP\San Leandro Facilities\HVAC\East AC Unit Temperatures Outdoor Air	East AC Unit	08-Mar-11 17:59:27	59.594 °F	
5	\\SL3ITPIAF01\ERP\San Leandro Facilities\HVAC\East AC Unit Temperatures Return Air	East AC Unit	08-Mar-11 18:00:51	72.608 °F	
6	\\SL3ITPIAF01\ERP\San Leandro Facilities\HVAC\West AC Unit Temperatures Mixed Air	West AC Unit	01-Jan-70 00:00:00	0 °F	
7	\\SL3ITPIAF01\ERP\San Leandro Facilities\HVAC\West AC Unit Temperatures Leaving Air	West AC Unit	08-Mar-11 18:00:52	52.682 °F	
8	\\SL3ITPIAF01\ERP\San Leandro Facilities\HVAC\West AC Unit Temperatures Outdoor Air	West AC Unit	08-Mar-11 18:00:48	63.734 °F	
9	\\SL3ITPIAF01\ERP\San Leandro Facilities\HVAC\West AC Unit Temperatures Return Air	West AC Unit	08-Mar-11 18:00:50	73.562 °F	

... Use both PI AF and PI Tag paths to locate PI System data

New PI DataLink Search Experience

- Find the data you want. Fast.
- Find tags and assets by name and relationships. Filter, sort, and scan the results.





Excel 2010 64-bit Support

- More rows, more columns.
- Better Business Intelligence .
- Compatible with all versions of Excel 2010
- Faster performance and more memory

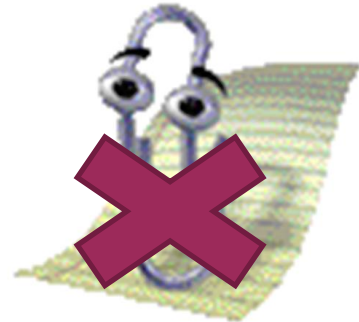
Supported Platforms

Office Versions

- Excel 2007
- Excel 2010 (32-bit)
- Excel 2010 (64-bit)
- **No longer supports Excel 2003 (or earlier)**
 - Best PI AF Experience requires new Excel UI - Ribbon + Task Panes
 - Ending MS support for 2003
 - Mainstream Ended: April 14, 2009
 - Extended Support Ends: April 8, 2014

Operation Systems

- Windows XP (SP3) – Windows 7
- Windows Server 2003 (SP2) – 2008R2
- NET Framework 4.x required





Backward Compatibility

- Continue to utilize existing workbooks
- PI Server 2010 Exclusive
 - Sync your PI MDB with PI AF and access data via PI AF
 - PI Server 2010 not required. Earlier versions supported
- PI AF Server NOT required.
- Use Attributes and/or PI Tags. Your choice.



Caveats

- Trend Control
 - 32-bit: Display & Update Existing Displays. No editing or creating new Trends
 - 64-bit: Not Available. Trends display as static images and do not update.
- MDB Functions
 - Refresh, Recalculate and Select existing function. No new functions
- Recommend upgrading to PI Server 2010



Level of Attribute Support

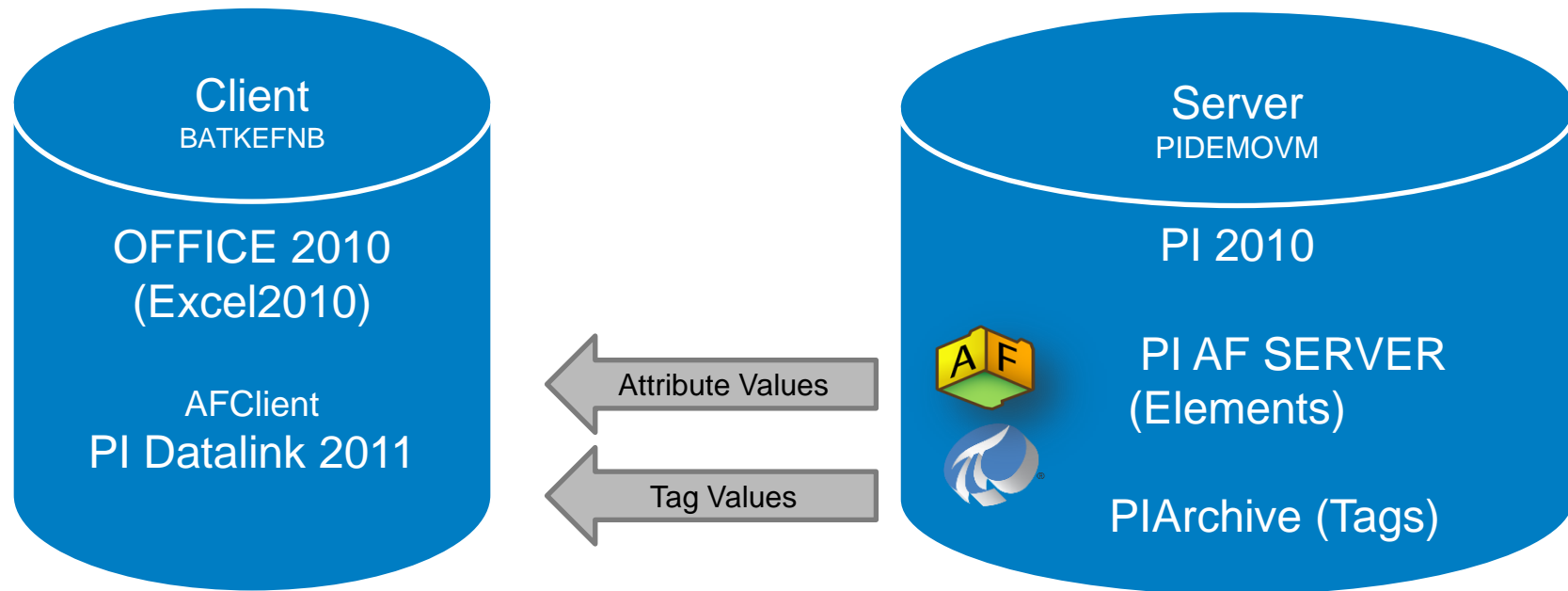
- ✓ PI Point data reference
- ✓ Formula data reference
- ✓ Custom data reference
- ✓ Table data reference



Other Notables

- Improved install experience
 - Single 32/64-bit kit
 - All pre-reqs included
 - More reliable and easier to customize for large deployments
- Recent Highlights
 - Update Function
 - Internationalization

Demonstration - Setup





Demonstration

- ✓ What's in My PI AF Database – using PI System Explorer





Demonstration

- ✓ What's in My PI AF Database – using PI System Explorer
- ✓ Configuring Access to PI AF Database(s) and PI PointDataBase





Demonstration

- ✓ What's in My PI AF Database – using PI System Explorer
- ✓ Configuring Access to PI AF Database(s) and PI PointDataBase
- ✓ Business as usual
 - Tags and Attributes coexist

Book1 - Microsoft Excel

File Home Insert Page Layout Formulas Data Review View Developer Add-Ins PI Team

Current Value Single Value Archive Value Compressed Data Multiple Value Sampled Data Timed Data Calculated Data Calculation Time Filtered Calculation Asset Search Search Update Update Settings About Help Resources

B8

	A	B	C	D	E	F	G	H
1								
2	Asset Pattern	*P661_1*						
3								
4	Start Time	y						
5	End Time	*						
6	Interval	1h						
7								
8	Attribute of asset							
9								
10								
11								
12								
13								
14								
15								
16								
17								
18								
19								
20								
21								
22								
23								
24								
25								
26								
27								
28								
29								
30								
31								

Sheet1 Sheet2 Sheet3

Ready 100%



Wrap - Up

- Integration with PI AF
 - “I want to access my PI System data without having to know about tags.”*
- Search
 - “I want to find relevant information quickly and easily.”*
- Excel 2010 64-bit support
 - “I want to leverage my investment in the latest technologies to maximize my productivity*



Thank you