



PI Coresight

The fastest, easiest way to visualize PI System data

Presented by

Tom LeBay

Product Manager

OSIsoft

What is PI Coresight?

A web-based product for:

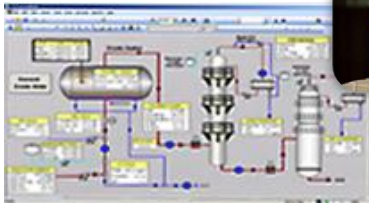
- Ad hoc analysis
- Quick investigation
- Collaboration
- Rapid deployment



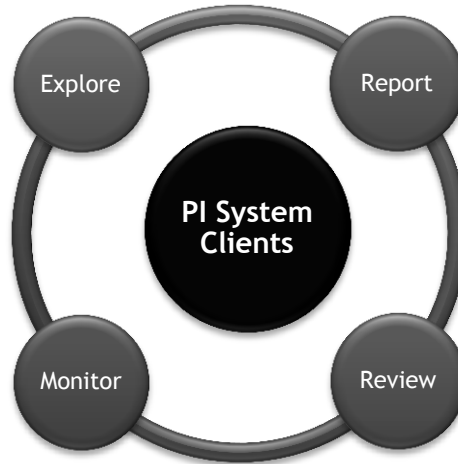
Where Does PI Coresight Fit?



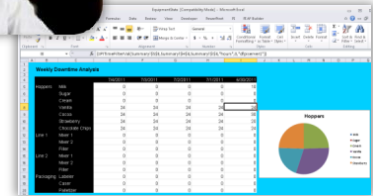
PI Coresight:
*Ad Hoc Analysis &
Collaboration*



PI ProcessBook:
Display authoring and
Process monitoring



PI DataLink:
Reporting and table
based analytics in
Microsoft Excel



PI WebParts: Composite
applications in SharePoint



Driving Principles



I asked for features that are not hidden.

I'll never need a user's manual again.



I want a more modern user interface.

Now I have a modern and intuitive UI.



Make it easier to find the information I'm looking for.

Finding information has never been more powerful.



I need to be able to start working where I left off.

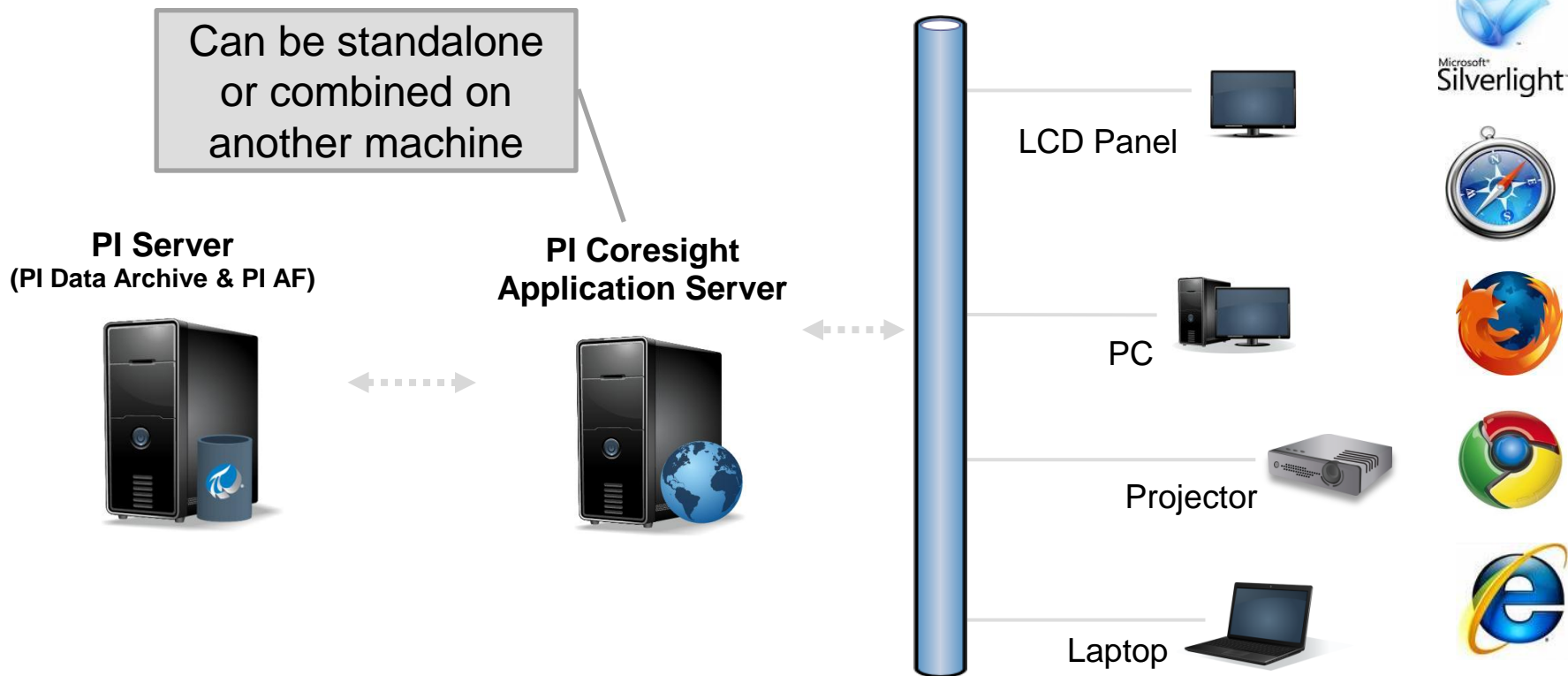
I can start without remembering every detail.



It's too hard to create and edit displays.

Display creation is fast and easy.

PI Coresight Architecture



PI Coresight Server Requirements

PI Coresight website and PI Coresight Admin website

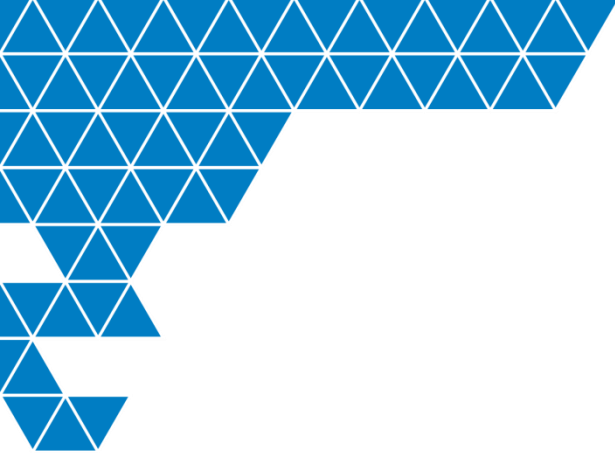
- Windows Server 2008 R2
 - Standard or Enterprise Edition
 - Application Server Role with IIS (Internet Information Server) 7.0 required
- Microsoft SQL Server 2008 R2
 - Standard, Enterprise, Express
 - Can be installed locally or remote

Hardware Recommendation

# of User	1 to 50	50 to 250	250-500
CPU (Cores)	2	4	8
CPU Speed (GHz)	2	2.5	3
Memory	4	8	16
Disk (GB)	.5	1.5	2.5*

PI Server

- PI Server
 - Windows Integrated Security requires v.3.4.380 and above
- PI AF- recommended for best experience but not required
 - PI AF 2010 R2 (v.2.3) and above
- PI Server 2010 R3 strongly recommended



Thank you