

OSIsoft®

USERS²⁰¹¹ CONFERENCE



Turning **insight** into **action**.

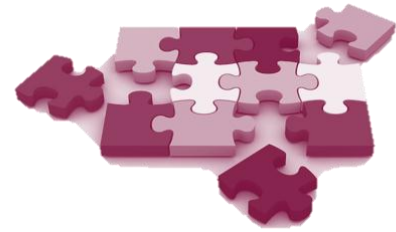


Unlock your Data with PI Data Access

Presented by **Steve Pilon**, Product Manager, OSIsoft
Bodo Bachmann, Engineering Manager, OSIsoft
Steve Mohr, Senior Software Developer, OSIsoft

Unlocking Data?

- Getting the **right data**, at the **right place**, at the **right time**
- By connecting **people** and your **systems** together
 - Connectivity, visibility, interoperability



Business Challenges

Disparate systems

- Acquired independently, over time
- Different departments/units

Domain, industry, or user-specific needs

- PI System is an infrastructure

Many different targets

- Diverse types of workers
- Different platforms, medias

Unlocking PI System Data?

- LoB Systems/Databases
- Orchestration/Workflows
- Web/Non-Windows Platforms
- Analysis/BI/Reporting
- Custom Applications

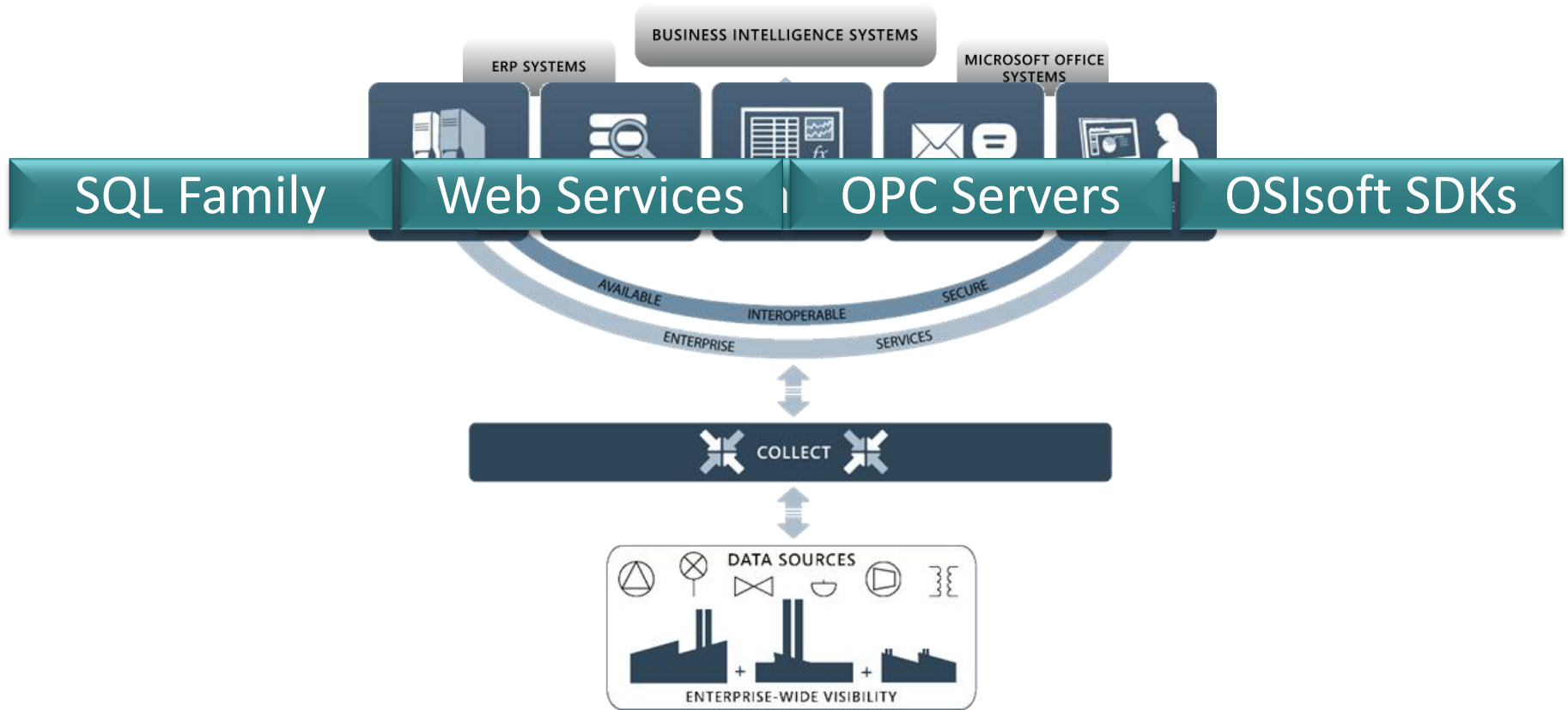


Custom Downtime Analysis Engine

Automated Ordering to Suppliers



The Products

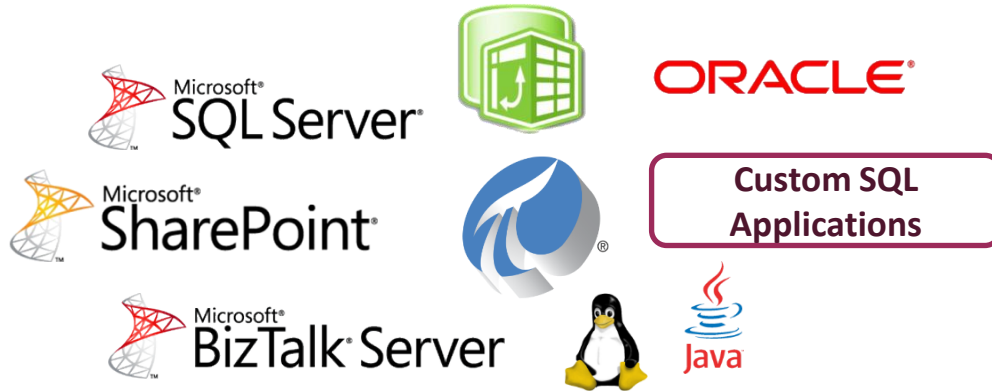


The last year in a Nutshell

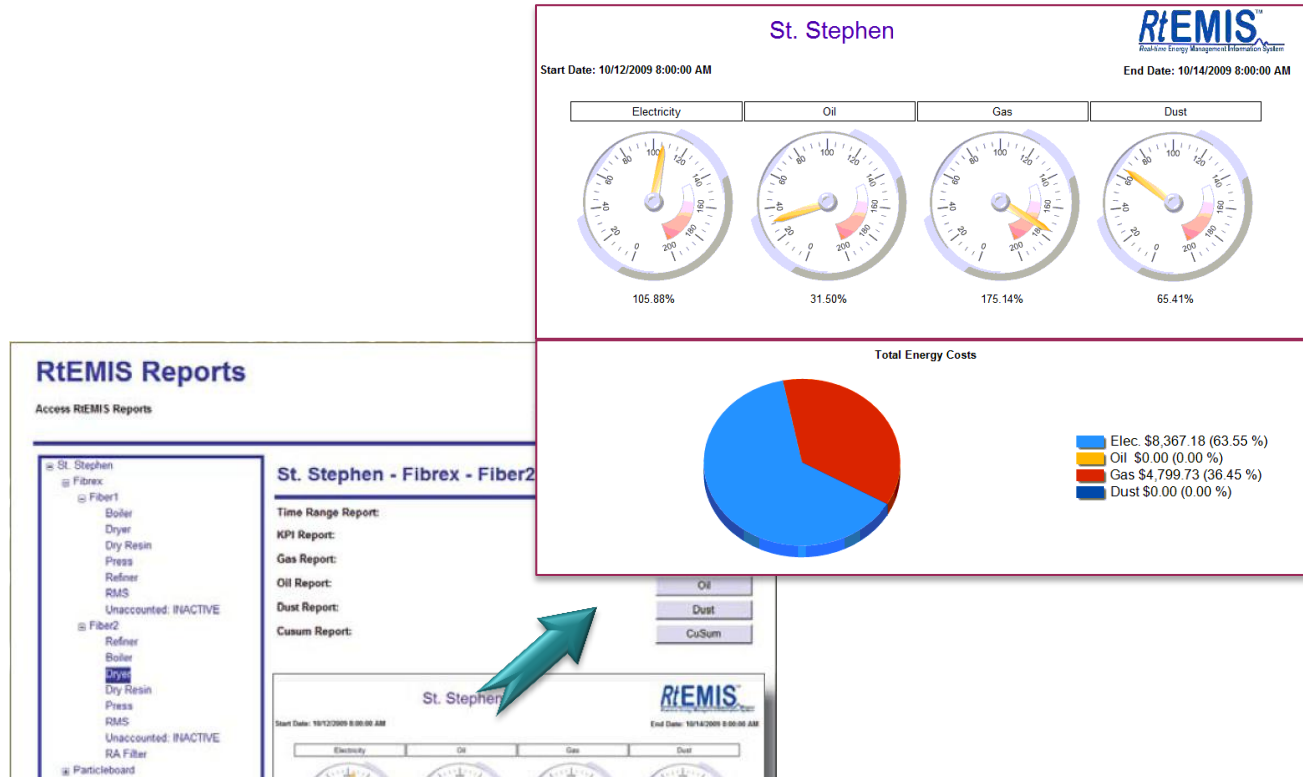
- Brand **new products**:
 - PI JDBC Driver
 - PI OLEDB Enterprise
 - PI Web Services
- Going the '**asset**' way
- More support for **non-Windows** and **distributed** environments

The SQL Family

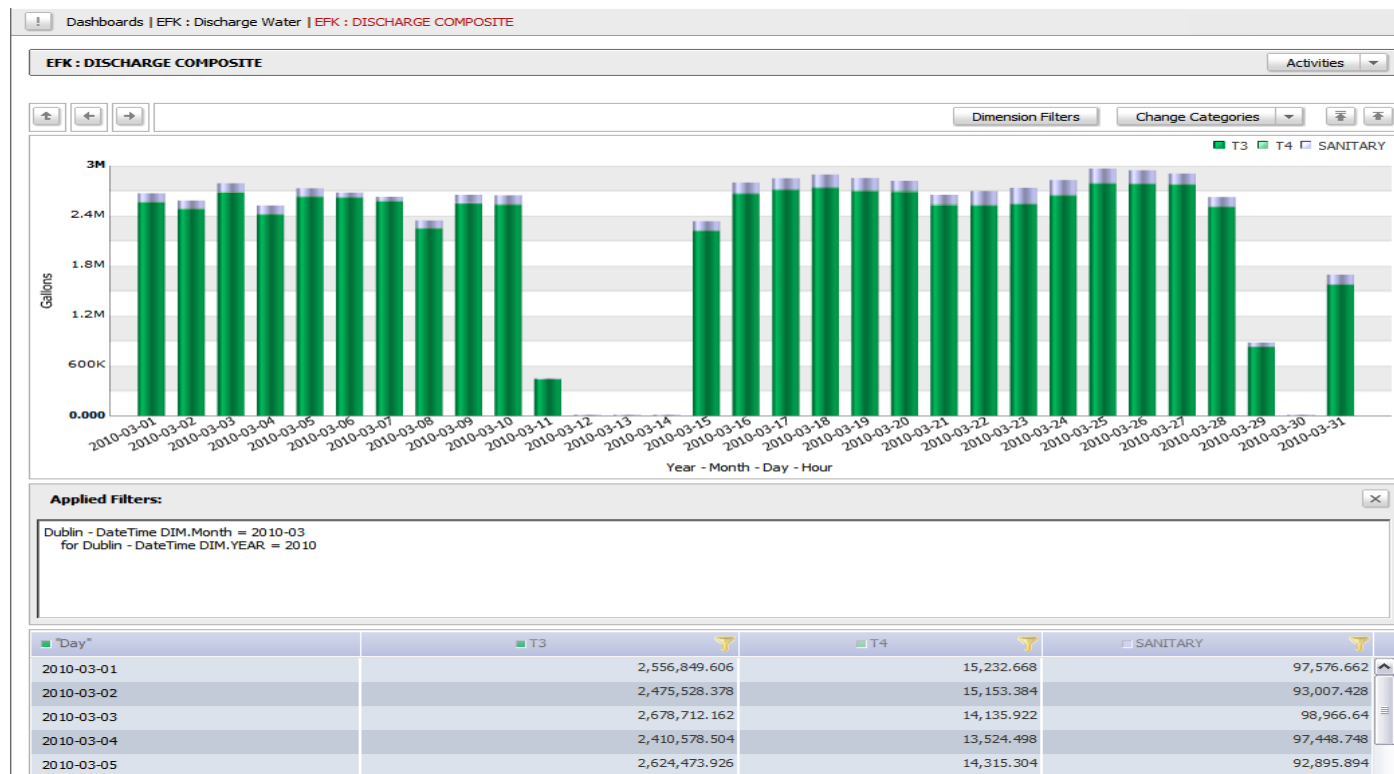
- Set of drivers that expose PI System data in a relational **database view** (OLE DB, JDBC, ODBC)
- Database systems integration, analysis, BI, reporting, Linux



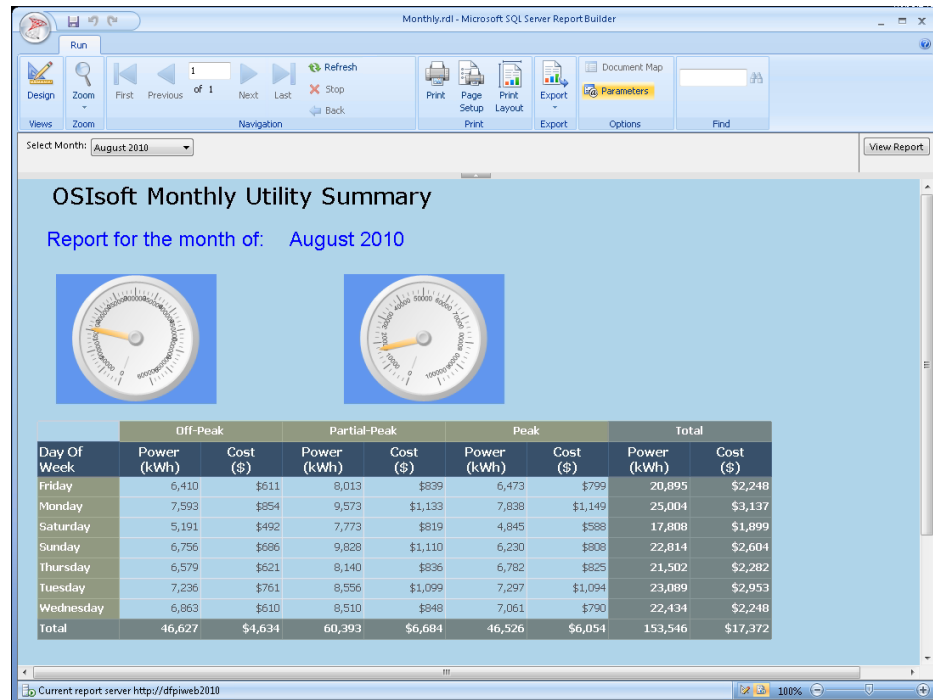
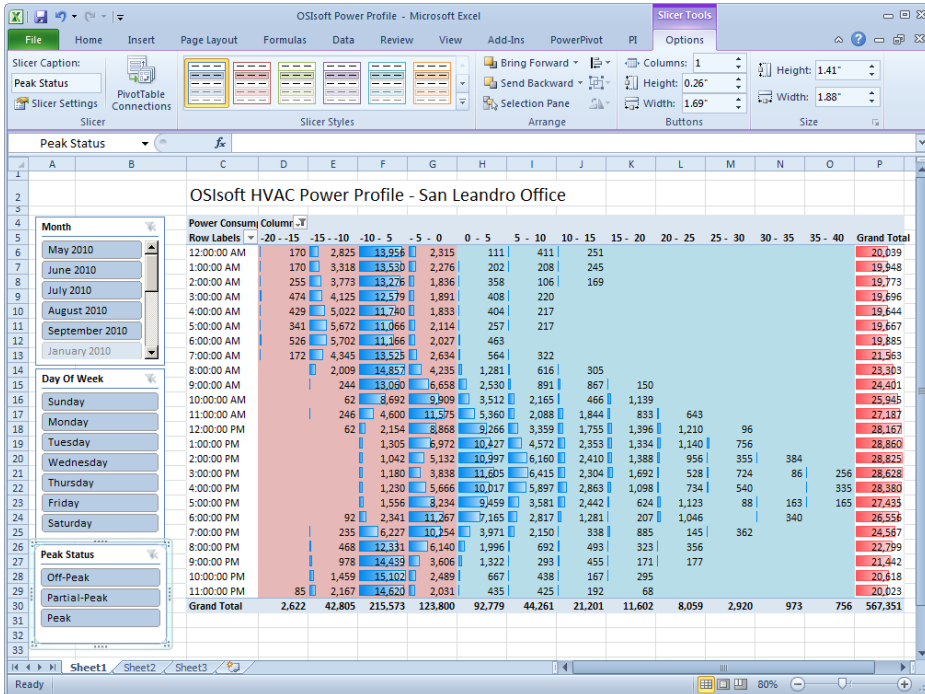
Energy Management



Environmental Analytics

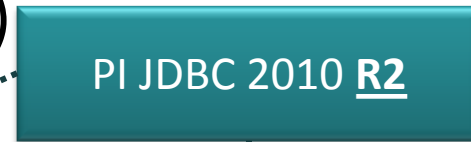
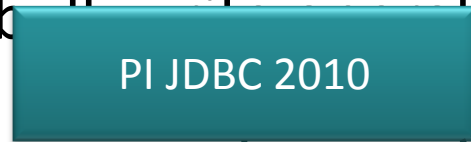


Cost Profiling & Reporting



New in our SQL Family

- PI JDBC 2010 R2
 - Go **asset**-centric
 - **Performance** enhancements (e.g. bulk insertions)



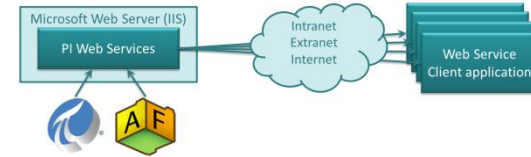
- PLOEDB Enterprise 2010 R2
 - Tag-Based Access*



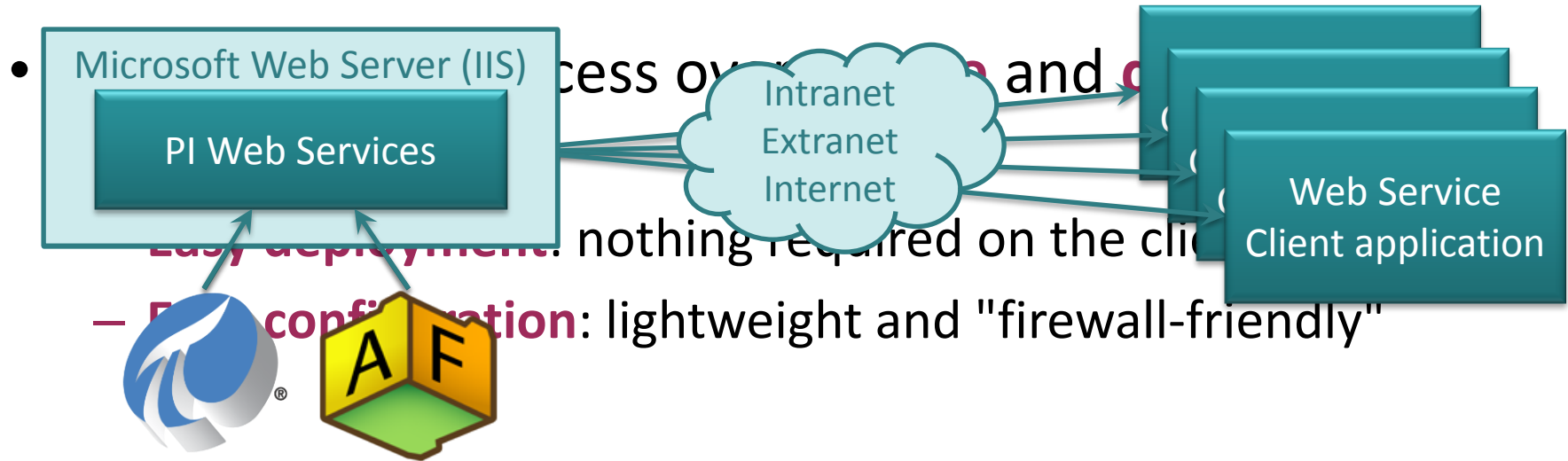
Asset-Based Access

- **Performance** and **compatibility** improvements

PI Web Services



- Access to PI System data using standard **web service** technologies

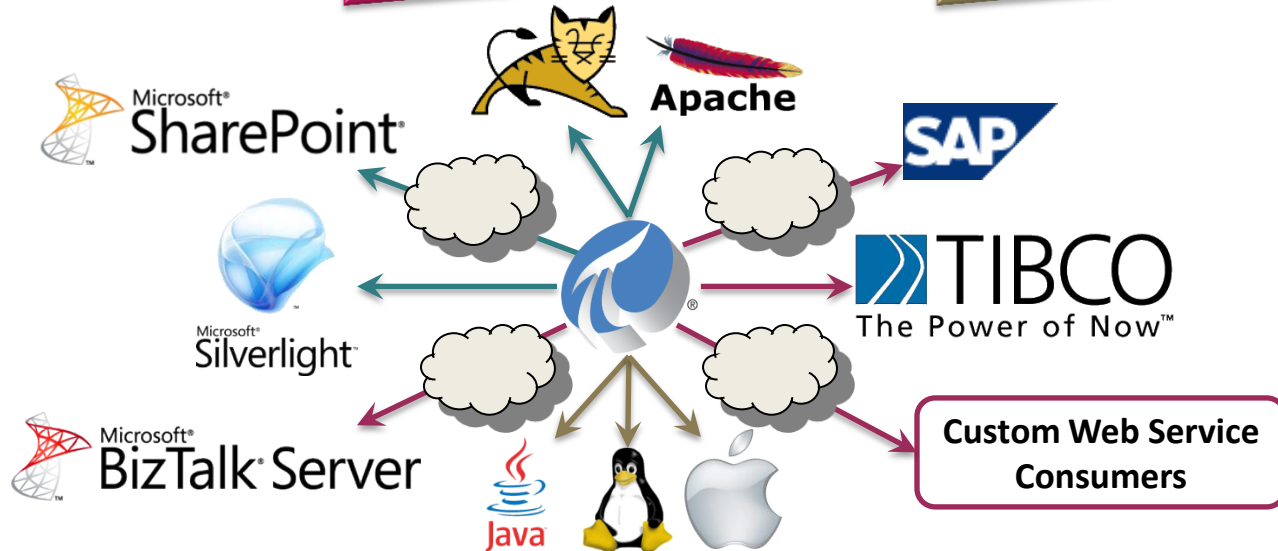


Use Cases

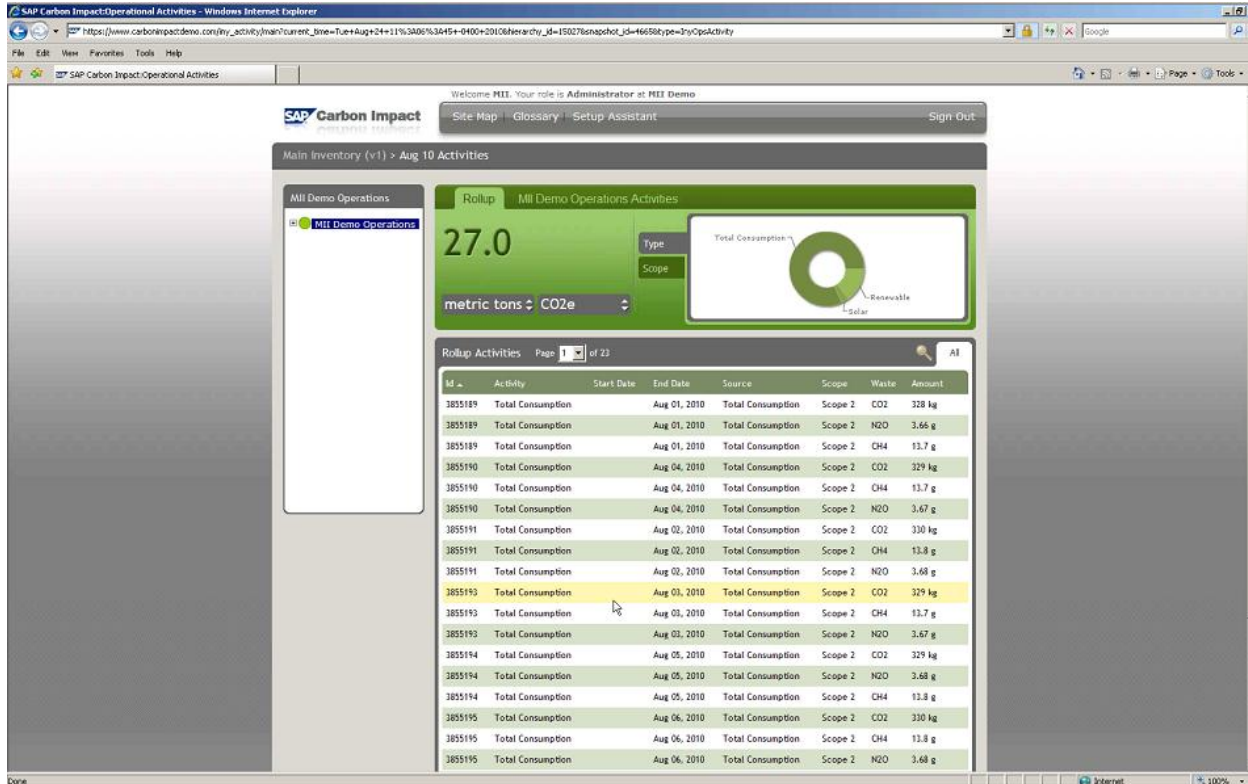
Web-based
visualization

Integration with
business systems

Non-Windows
environments



Carbon Impact Management



Geospatial + Timeseries Data Mashup



New in PI Web Services 2010 R2

- 2 **new methods**
 - Simplified 'Get Snapshot'
 - Tag Search
- Support for additional **data insert modes**
(e.g. replace)
- Support for additional **PI AF Attribute types**
(e.g. formula, table lookup)

What's coming next

- More **assets**, more **events**
 - Support for PI Event Frames
(PI OLEDB Enterprise, PI JDBC and PI Web Services)
- **Performance** improvements
 - Data by exception
(PI Web Services)
- Support for "the other type" of web services
 - A **REST**ful service (OData)

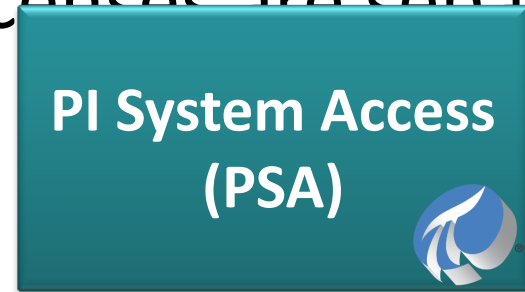
How to get PI Data Access

- Licensed as a **family** of products
(No cherry picking, you get it all)

```
AFTimeRange tr = new AFTimeRange(new AFTime(tex  
FValue val in vals) if (FElements["Pump15"] != null)  
{  
    1stValues.Items.Clear();  
    foreach (FValue val in vals)  
    {  
        1stValues.Items.Add(val.Value.ToString() +  
    }  
}
```

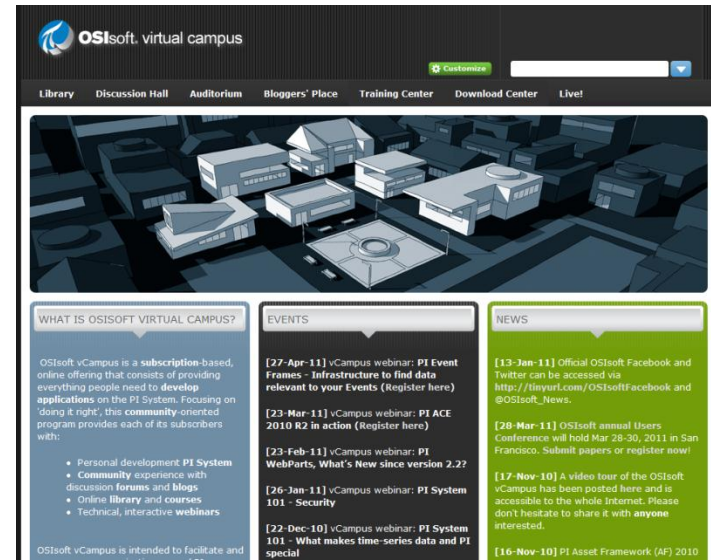


- **Development** and **Runtime** licenses are separate
(You pay for what you need)



OSIsoft Virtual Campus (vCampus)

- **Online, community**-oriented program
 - Software + Resources + Collaboration
 - Focus on development and integration
 - Partners, customers and OSIsoft
 - Exclusive contents (CTPs, Betas, technical papers)
- Personal **development PI System**
 - Development licenses for PI Data Access products (for developers and integrators)



<http://vCampus.osisoft.com>
vCampus@osisoft.com

What else to look at?

- **Business Intelligence with the PI System & PowerPivot**
 - Tuesday at 2:50pm
- **Using PI System Data and Events in your Enterprise and Line of Business Systems**
 - Tuesday at 3:30pm & Wednesday 8am
- **OSIsoft vCampus Community: At Your Service**
 - Tuesday at 4:30 pm



Thank you

© Copyright 2011 OSIssoft, LLC.

Turning **insight**
into **action.**