



OSIsoft®
REGIONAL
SEMINARS 2012
The **Power** of **Data**



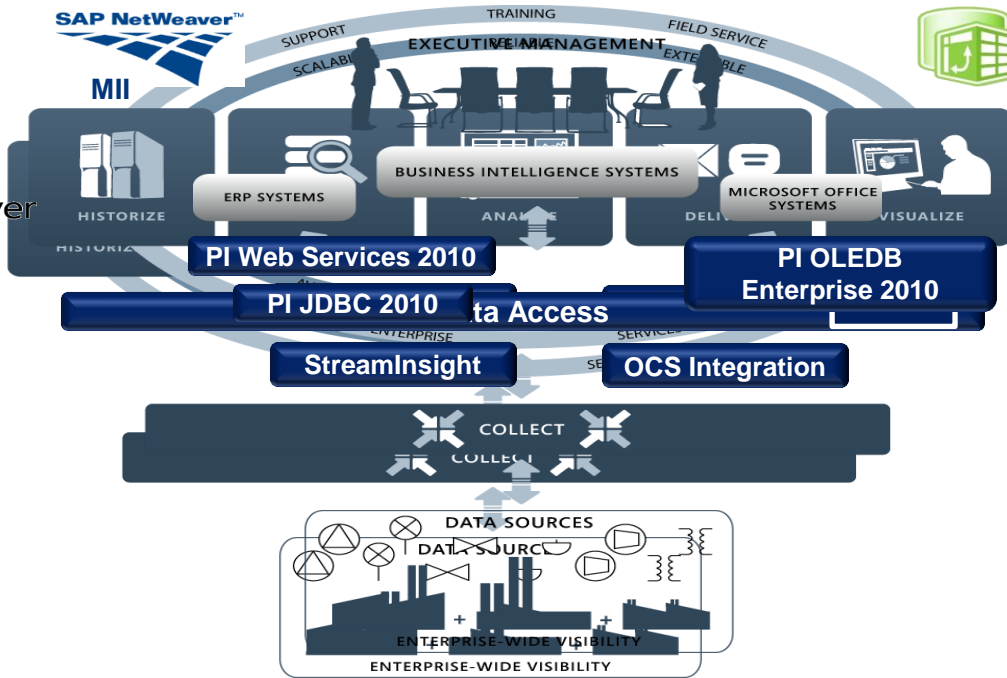
PI Asset Framework

Presented by **OSIsoft**

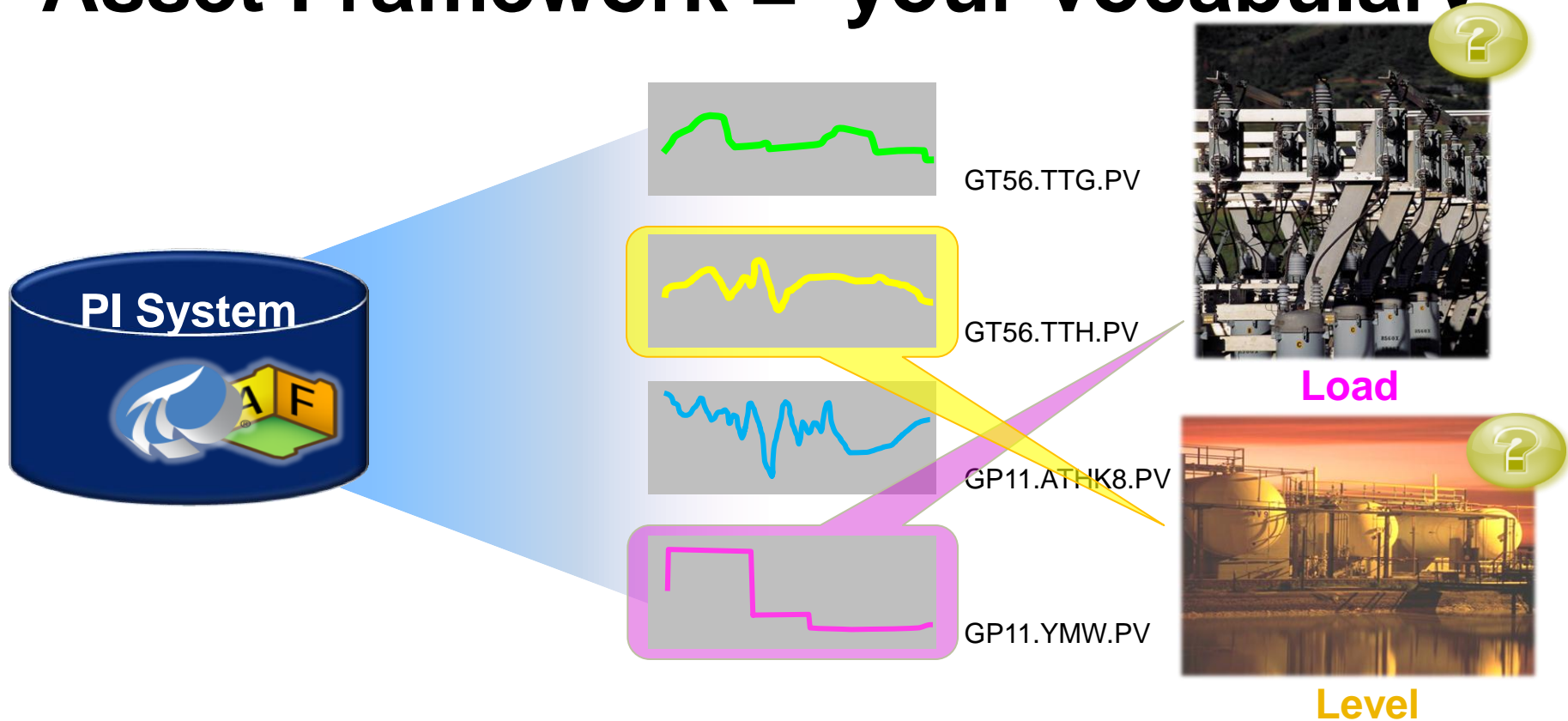
The PI System



MII

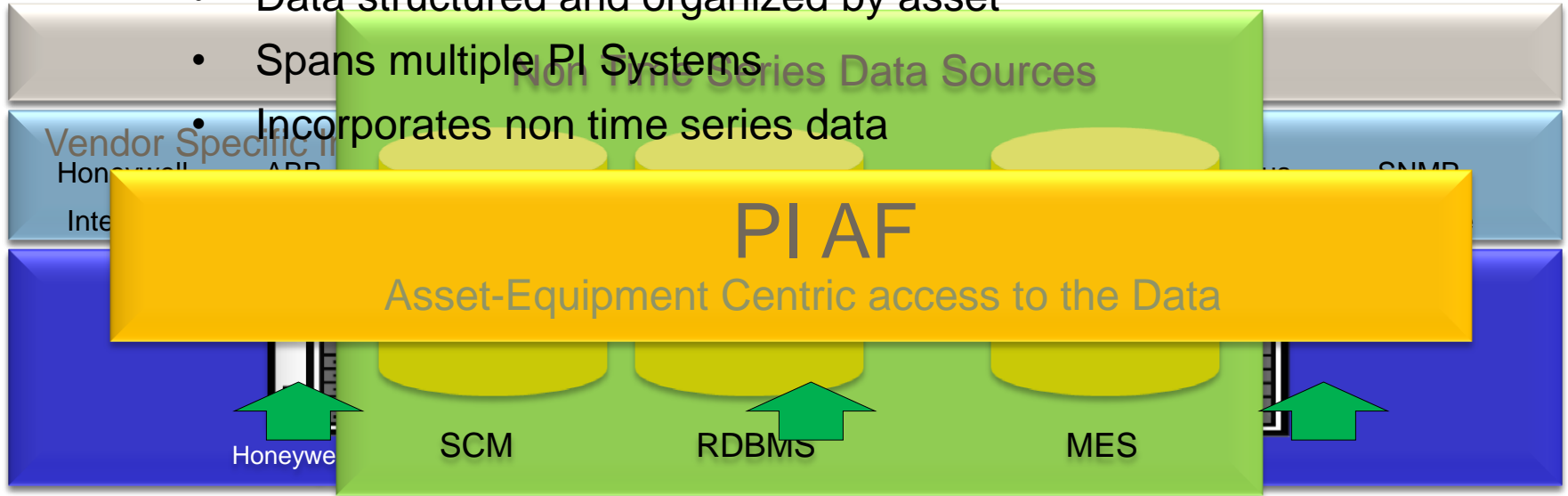


Asset Framework = your vocabulary



spans all your data

- Data structured and organized by asset
- Spans multiple PI Systems
- Incorporates non time series data



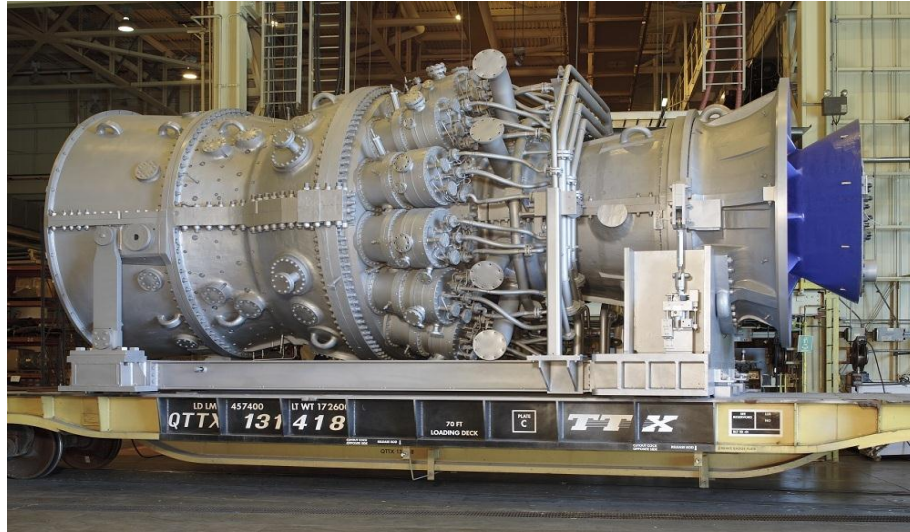
Asset Centric PI System

- **PI AF provides an asset centric view of your plant**
- **Establish relationships**
 - Build hierarchies, categories and connectivity models
 - Relate asset properties to your disparate data
- **Standardize, common view**
 - Templates for similar assets
- **Apply domain knowledge via PI Notifications and analyzes**
- **Access your data via PI Data Access products**

Build a Complete Picture of Your Asset

PI Tags

- Inlet pressure
- Inlet flow
- Ambient temperature



PI Tags

- Exhaust temperature
- Exhaust flow
- Measured MW output

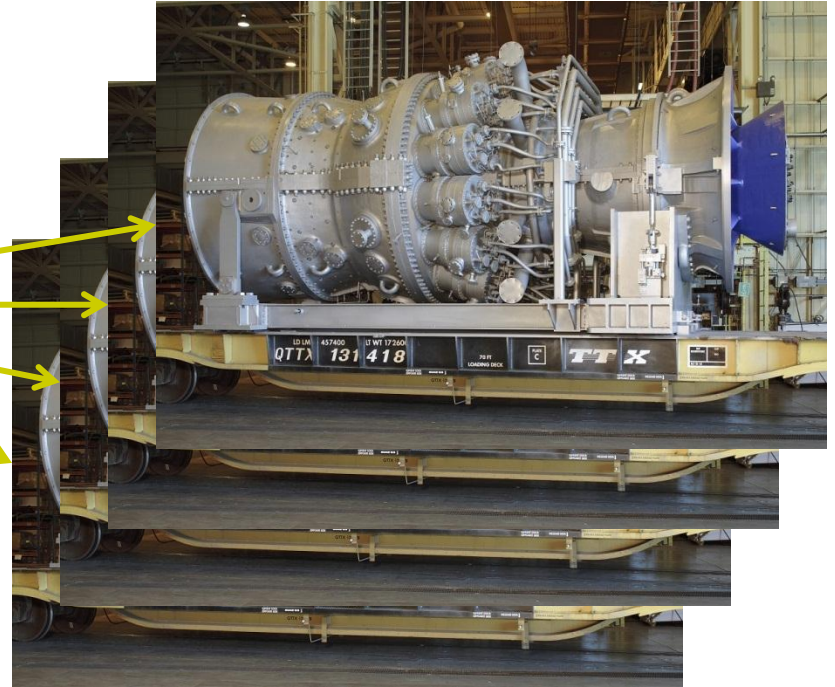
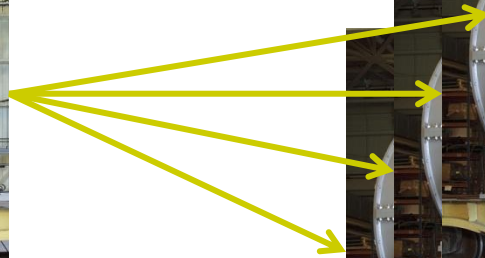
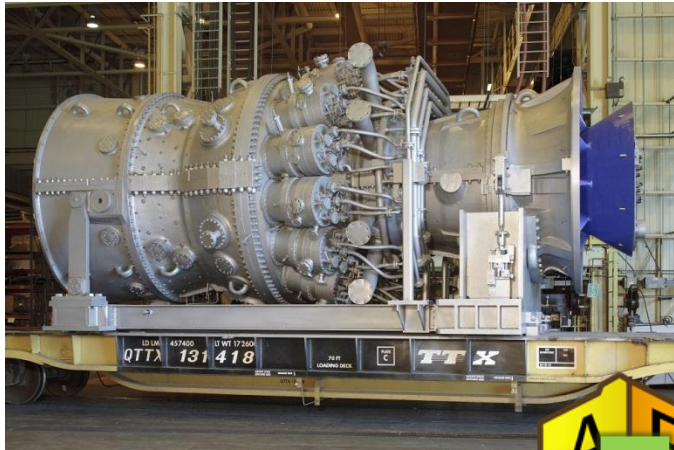
External Databases

- Performance curves
- Last service date
- Design documents
- Inspection best practice

Calculations

- Performance calculations
- KPI's

Common View for Similar Assets



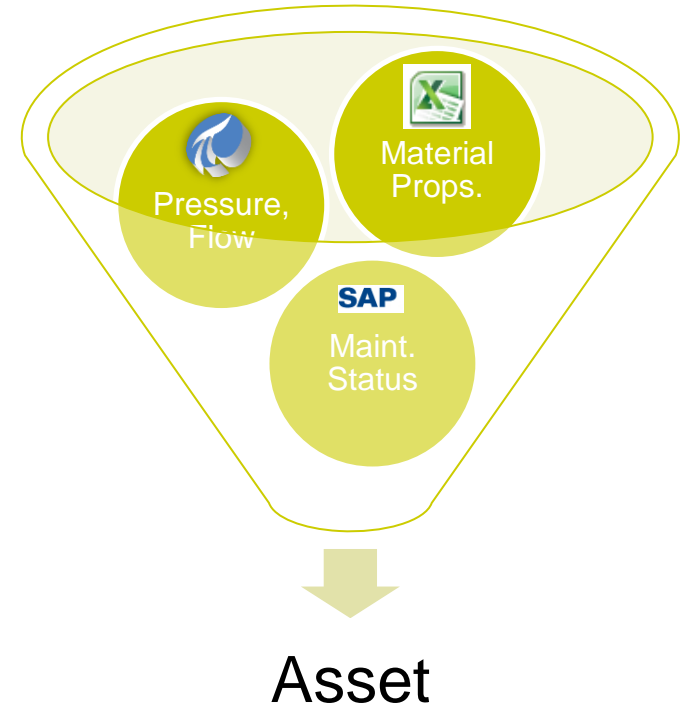
Add Value to your PI System

The screenshot displays the UC2011-SK - PI System Explorer interface. On the left, a tree view under 'Elements' shows the hierarchy: Big Creek Power Plant, Condenser, Gas Turbine 1, Gas Turbine 2, HRSG 1, HRSG 2, Steam Turbine, and System Configuration. Below this is a 'Library' section with 'Unit of Measure', 'MyPI', 'Notifications', and 'Contacts'. A 'Prices' table is also visible, listing 'Electricity Price', 'Gas Fuel Price', and 'Oil Fuel Price'. The main area is a data table with columns for Name, Value, and Unit. The 'Compressor Inlet Temperature' row is highlighted in blue.

Name	Value	Unit
Compressor Discharge Pressure	16.2847557067871	bar(g)
Compressor Discharge Tempe...	433.991912841797	°C
Compressor Inlet Temperature	19.9780979156494	°C
Exhaust Gas Pressure	0.0206421613693237	bar(g)
Exhaust Gas Temperature - #...	594.774108886719	°C
Exhaust Gas Temperature - #...	597.018737792969	°C
Exhaust Gas Temperature - #...	595.317443847656	°C
Exhaust Gas Temperature - #...	598.902770996094	°C
Fuel Oil Flow	-0.0620765015482903	m3/h
Fuel Oil Pressure	15.818398475647	bar(g)
Fuel Oil Temperature	33.3455696105957	°C
Gas Fuel Flow	70317.8671875	m3/h
Gas Fuel Pressure	36.21142578125	bar(g)
Gas Fuel Temperature	68.7641372680664	°C
Gas Turbine Speed	3000.62158203125	rpm
Gross MW Output	261.549621582031	MW
In Service Date	2/25/2009 12:00:00 AM	
Inlet Guide Vane Angle	95.78909	%
Inlet Pressure Loss	1.60181736946106	mbar(g)

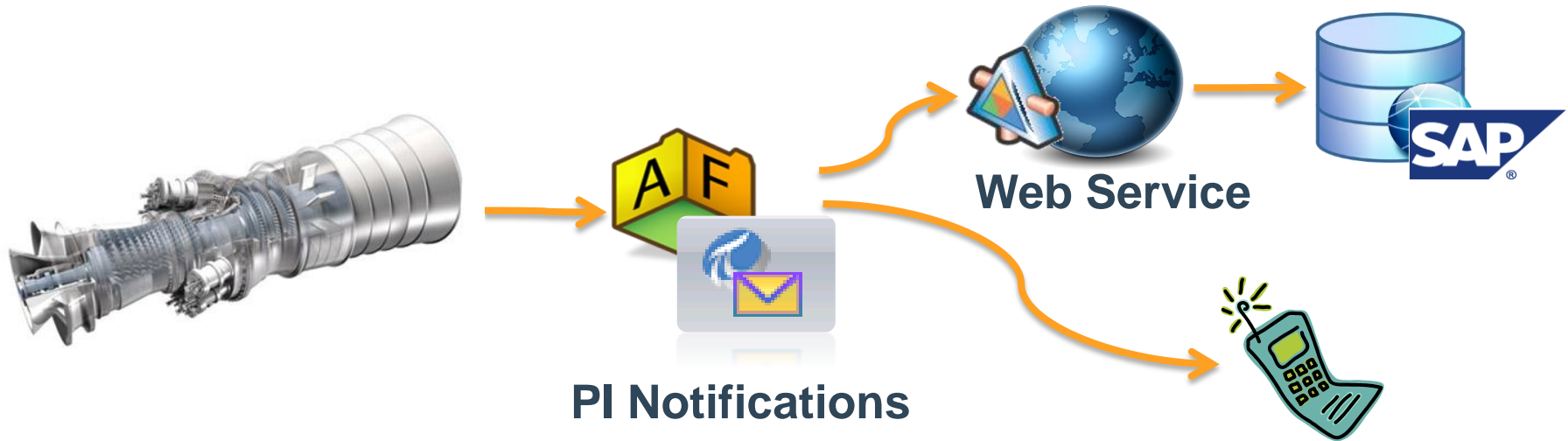
Add Value to your PI System

- **Tie asset properties to your data**
 - Static values, PI Tags from multiple PI Servers, static or linked Tables
 - Custom data references to other data sources



Add Value to your PI System

“One of GT exhaust thermocouples has been acting up... Let’s keep an eye on it and create a work order for maintenance if it fluctuates more than 5% in 5 seconds. Make sure Bob is notified of this also.”



Add Value to your PI System

Event Frames Are Part of Asset Framework

- GT #2 tripped again last night!!
- How many times has this happened in the last year?
- What were the operating conditions when it tripped?
- Let's find and gather all these events and analyze them.



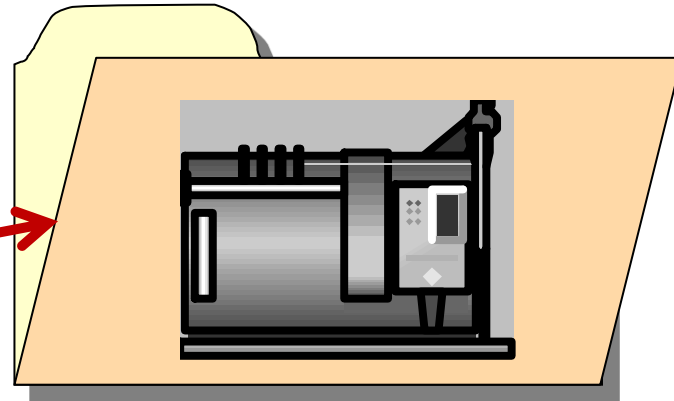
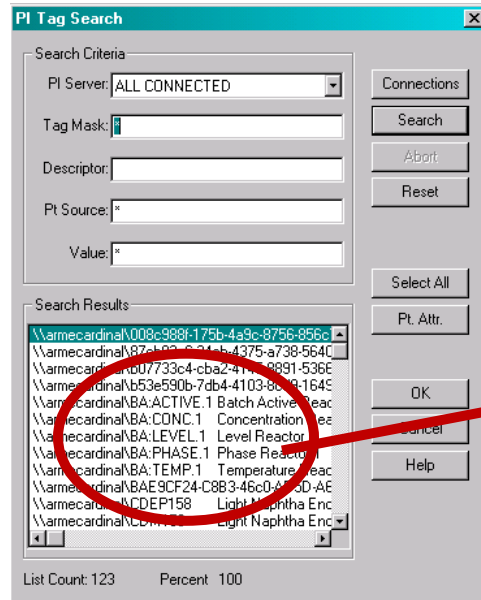
Downtime Events

- Asset of interest
- Start/End Times
- Reason Codes
- Asset Conditions

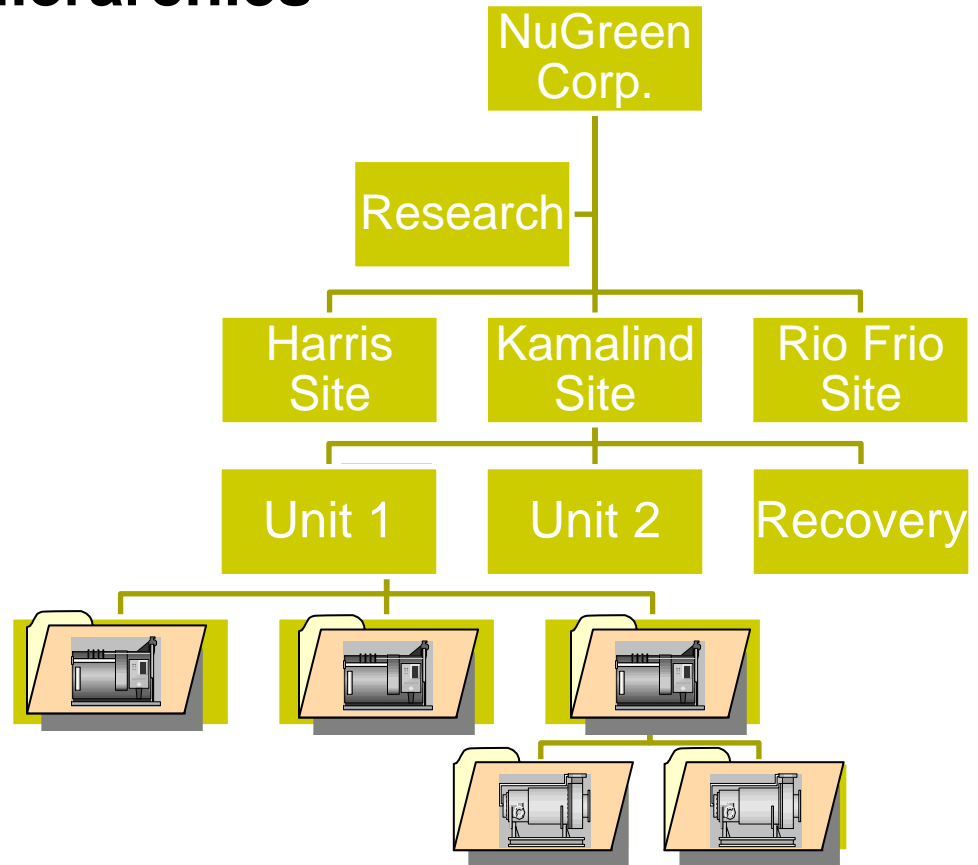


How to begin

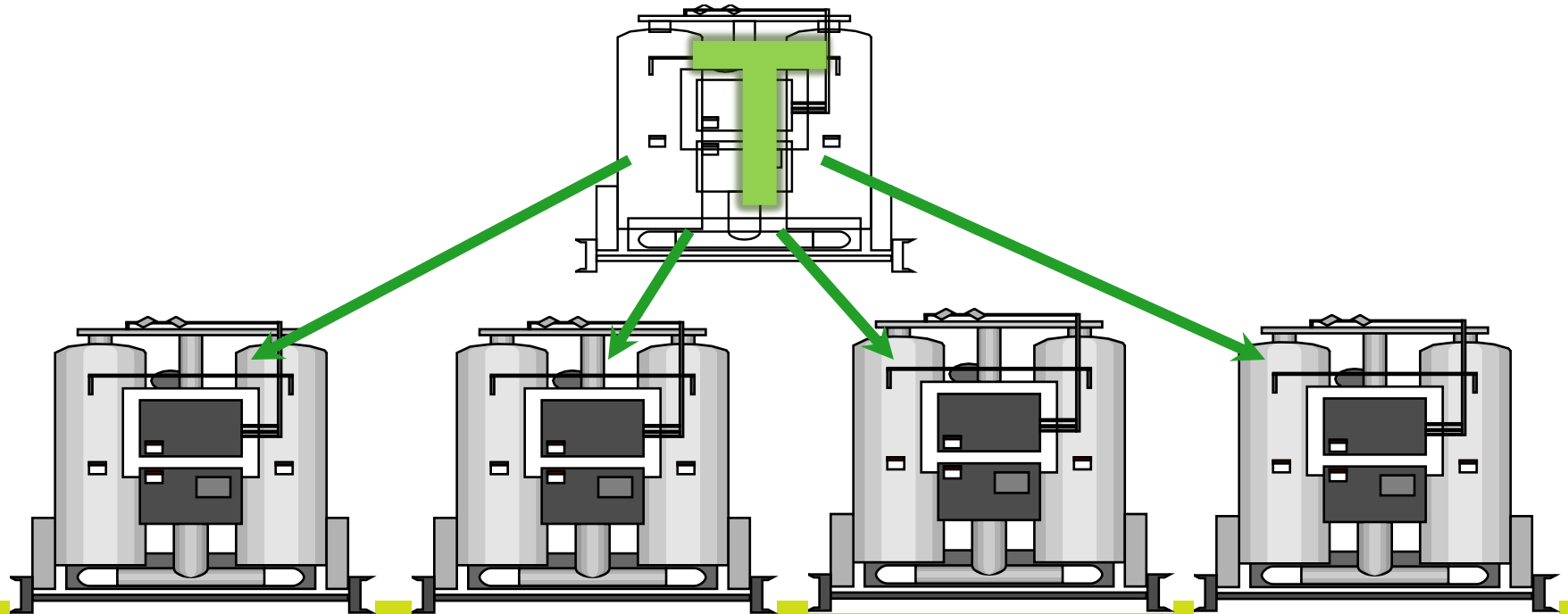
Sort Your Tags into Elements Which Represent Your Equipment



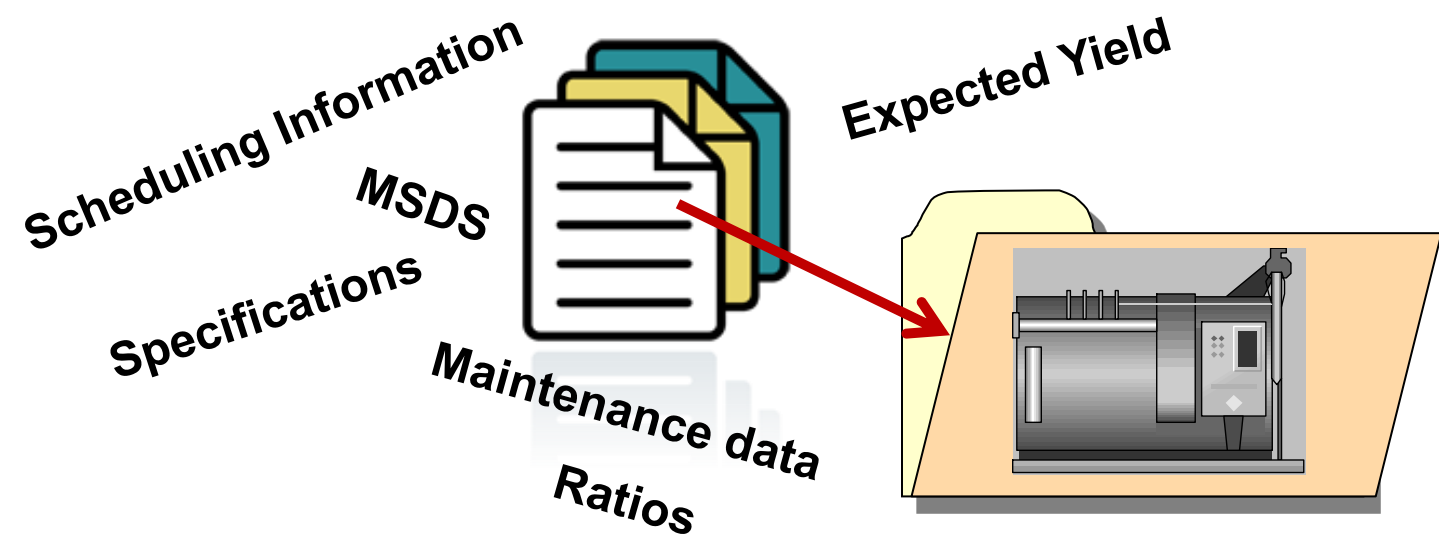
Organize the Assets into Hierarchies



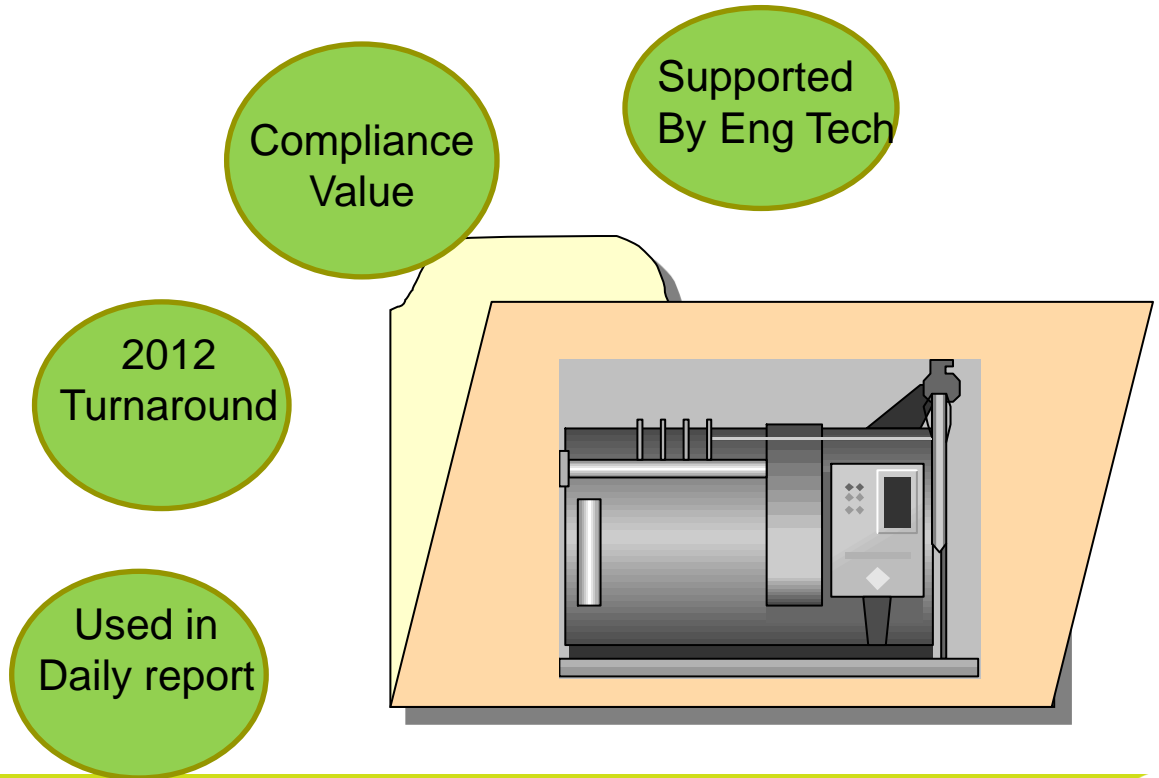
Manage and Extend Elements by creating Powerful **Templates**



Add Efficiency Calculations, KPIs, Reference Data from Relational Databases and Other Information to Add More Value



Add Key Words (Categories) to Make Them Easier to Search for



It Might Take a Team

Process “nerds” – subject matter experts - who understand the data well enough to build the calculations and define the relationships



&



IT “geeks” who can wrangle the XML and SQL, to build large databases

AF – Putting AF into Best Practice

Shaping your data by:

1. Defining types of assets

Schema how to attribute Elements



Templates

2. Association to a “real” asset

Created from Template



Elements

3. Describing the “real” asset

having Units Of Measurements (UOM)

can come via data references from everywhere



Attributes

4. Physical/logical asset structure



Hierarchy

5. Assets connectivity

Model : Collections of connected elements

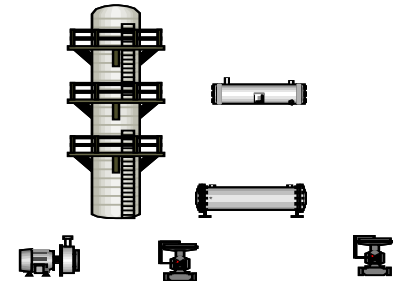
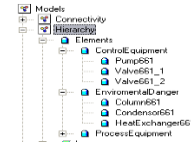


Model

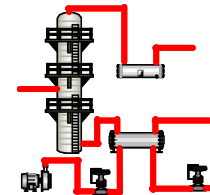
Condensor
Heatexchanger
Column
Valve
Pipe
Pump

Column661
Condensor661
P661_1
P661_2
HeatExchanger661
Valve661_1
Valve661_2

OpeningGrade
InspectionResult
LastInspection
SerialNumber
XZY



PI Point: \\MOBILEVBC\Valve661_1.OpeningGrade
Table Lookup: SELECT InspectionResult FROM ...
Table Lookup: SELECT LastInspection FROM ...
Table Lookup: SELECT SerialNumber FROM ...
Formula: A=OpeningGrade:[A*0.98]



\\skwan-vm-af25\NuGreen - PI System Explorer (Administrator)

File Edit View Go Tools Help

Database Query Date Back Check In Refresh New Element Search

Elements

Elements NuGreen

Group by: Category Template

Name	Description	Category	Type	Template
NuGreen	Our Company E...	Locations	None	Enterprise

Elements

- Event Frames
- Library
- Unit of Measure
- Replication
- MyPI
- Notifications
- Contacts
- Model Analyses



Insight PI Asset Framework

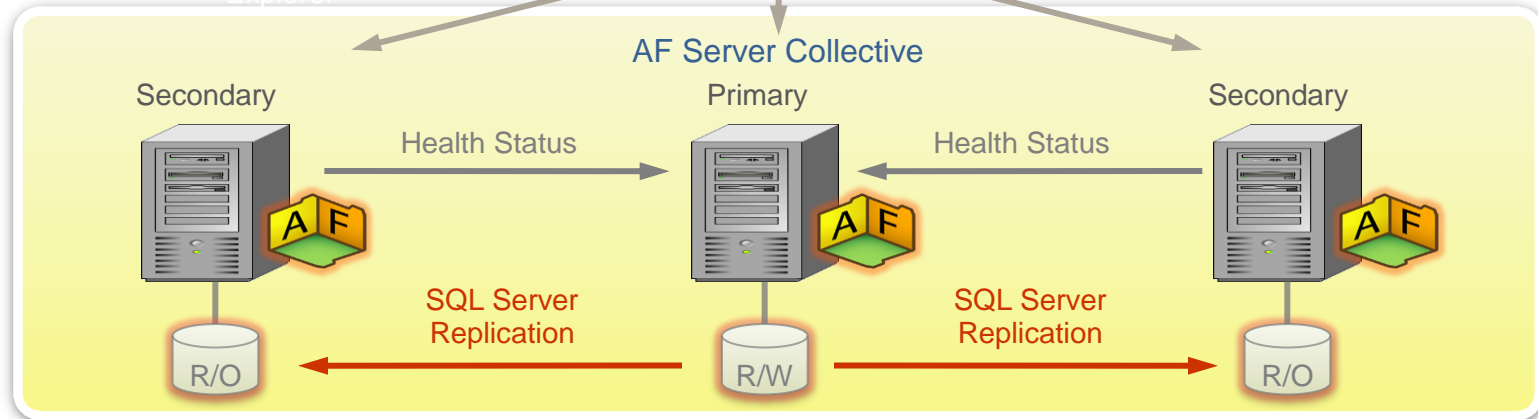
AF HA Collective



PI Notifications, AF-based PI Clients
(PI WebParts, ProcessBook, DataLink, etc.)



AF SDK Library



Extending PI AF

- Enhance functionality of PI AF by your own Plugins
 - Access new data sources (Data References)
 - Notifications to users or systems (Delivery Channels)
- Easy deployment – no ‘roll-outs’ – just register

- Create **domain/industry specific** applications
- Focus on **doing it right**
- Personal development **PI System**
- **Community experience**
- Tech Conference: **OSIsoft vCampus Live!**



```
AFTimeRange tr = new AFTimeRange(new AFTime(tex
AFValues vals = _afDB.Elements["Pump123"].Attri

lstValues.Items.Clear();
foreach(AFValue val in vals)
{

    lstValues.Items.Add(val.Value.ToString() +
}
```

Mapping assets – User example UC 2012

PI Asset Framework – PI AF in Janssen

Super Class concept.

- Class based templates – built in conjunction with process and subject matter experts.
- Only process critical information grouped together in a logical model.
- Ensures that the entire organisation have a common taxonomy.

PAS|X \ PI AF

- Using Unit based templates allows us to build unit based MBR elements that can be applied on other sites.

The screenshot displays the PI AF software interface. On the left is a 'Library' pane showing a hierarchical tree of templates under 'Centocor Cork'. The tree includes categories like 'Element Templates' and 'Model Templates', with sub-items such as 'Aber', 'Autoclave', 'Bag', 'BioReactor', 'Buffer Bag Station', 'Buffer Vessel', 'Cendex', 'Chemical Reactor', 'Chromatography Column', 'Class', 'Conductivity Meter', 'Final Bulk Fill', 'Final Concentration Vessel', 'Final UF/DF', 'FIT', 'Freezer', 'HFUF', 'Incubator', 'IPC', 'Media Bag Station', 'Media Prep Vessel', 'Mobile Vessel', 'NephWeight', 'Osmolality Meter', 'PASX', 'PASX Data Template', 'pH Meter', 'PhC Batch Counter', 'SCTimer', 'Site', 'Transfer Panel', 'Unicom', 'Washer', 'Wash Booth', 'Wash Scales', 'Model Templates', 'Transfer Templates', 'Enumeration Sets', 'Reference Types', and 'Tables'. The 'BioReactor' template is selected.

On the right is the 'BioReactor' template configuration window, showing a table of elements. The table has columns for 'Name', 'Description', and 'Default Value'. The elements are grouped into sections like 'Aber', 'Batch Information', 'Cell Density', 'DO', 'Event', 'Gases to BioReactor', 'ID', 'IPC', 'Media Feed', and 'Phase Information'.

Name	Description	Default Value
Aber		
Aber Calibration Result	Aber Calibration Result	0
Aber Measurement	Aber Measurement Result	0
Aber Readout	Aber Readout Result	0
Batch Information		
BatchID	Batch ID	
Cell Density		
Cell Density Controller	Cell Density Controller	0
DO		
DO Analyser 1	Dissolved Oxygen Analyser 1	0 %
DO Analyser 2	Dissolved Oxygen Analyser 2	0 %
DO value	Dissolved Oxygen value	0 %
Event		
Event		
Gases to BioReactor		
Process Air Flow Lower Sparge	Process Air Flow Lower Sparge	0 slpm
Process Air Flow Overlay	Process Air Flow Overlay	0 slpm
Process Air Flow Upper Sparge	Process Air Flow Upper Sparge	0 slpm
ID		
ID	Reactor ID	0
MOC	Material Of Construction	Stainless Steel
IPC		
ATF Sample Result	ATF Sample Result	0
pH	pH Value	0
pH Probe 1	pH Probe 1	0
pH Probe 2	pH Probe 2	0
Media Feed		
Media Feed	Media Feed	0 l/min
Phase Information		
Pressure Test Result	Pressure Test Result	
SIP Cool Down Complete	SIP Cool Down Complete	



THANK YOU

Brought to you by  **OSIsoft.**