



OSIsoft.
REGIONAL SEMINAR 2012
A P A C
The **Power** of **Data**



The Future of Business Insight

Presented by

John Bradley

Manufacturing & Resources Industry Development Manager

Microsoft Australia

john.bradley@microsoft.com

OSIsoft. REGIONAL SEMINARS 2012

© Copyright 2012 OSIsoft, LLC.

Agenda

- Manufacturing & Resources Sector - the context
- Current State of the BI Market
- Microsoft's approach to Business Insight
- Q & A

Manufacturing & Resources Sector – the context



Mining, Oil & Gas

- The hunt for new resources ...
- Staffing
- OH&S. Pollution control, safety, sustainability and social responsibility
- Becoming more customer centric
- Much more real-time data
- The Cloud



Power & Utilities

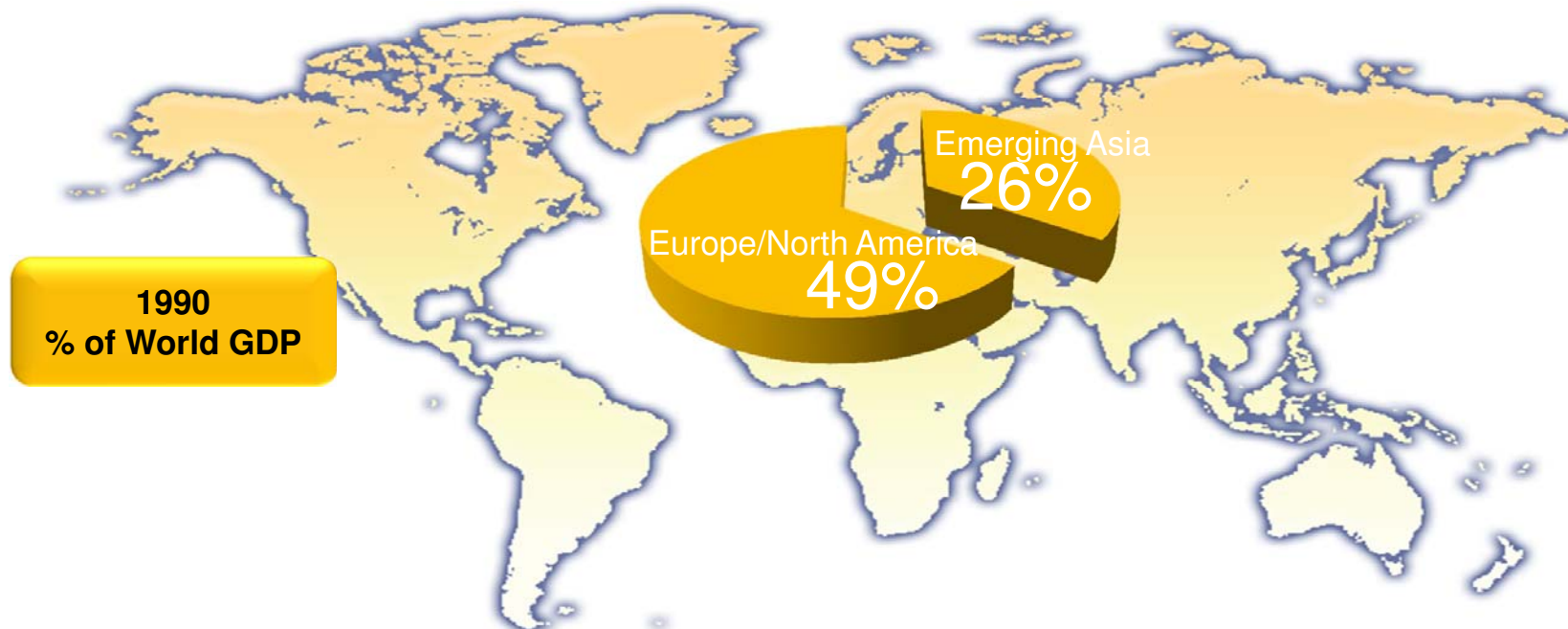
- Aging Infrastructure
- AMI programs
- Staffing
- Retail competition
- Sustainability, Carbon Tax

The common challenge?

Physical asset intensive industries. Time series asset monitoring is critical for transition from "time scheduled" maintenance, to "condition "based maintenance to "predictive "maintenance

Resources Industry – what is driving the opportunity in Australia?

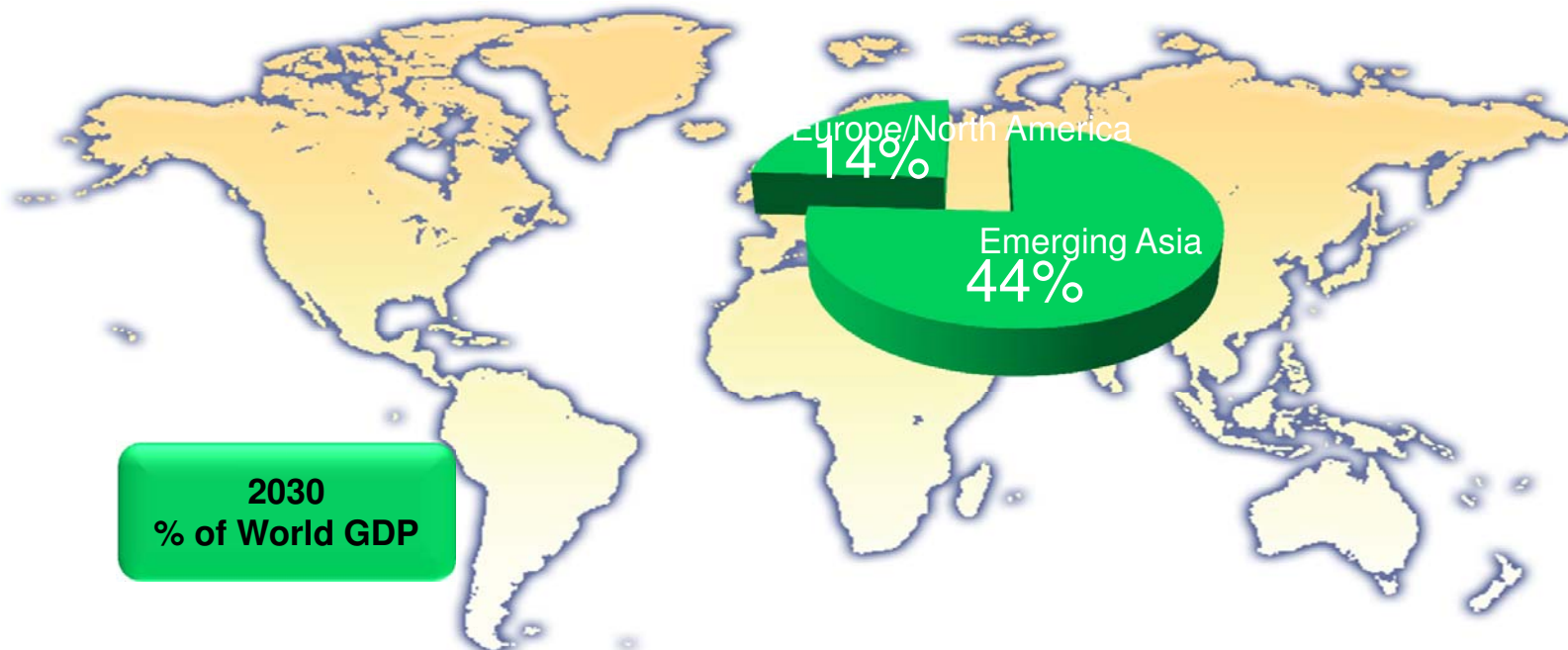
Microsoft®



In 1990 "Western Europe and North America" produced 49 per cent of world GDP, but by 2030 their share is expected to almost halve to 26 per cent
In 1990 Emerging Asia (i.e. ex Japan) produced 14 per cent of world GDP, but is expected to more than triple its share to 44 per cent in 2030
Those are much bigger shifts in the location of global production than were recorded after the industrial revolution, and they are occurring over much shorter timeframes

Resources Industry – what is driving the opportunity in Australia?

Microsoft®



In 1990 "Western Europe and North America" produced 49 per cent of world GDP, but by 2030 their share is expected to almost halve to 26 per cent
In 1990 Emerging Asia (i.e. ex Japan) produced 14 per cent of world GDP, but is expected to more than triple its share to 44 per cent in 2030
Those are much bigger shifts in the location of global production than were recorded after the industrial revolution, and they are occurring over much shorter timeframes

A picture tells a thousand stories....

Shenzhen 1982



Shenzhen 2007



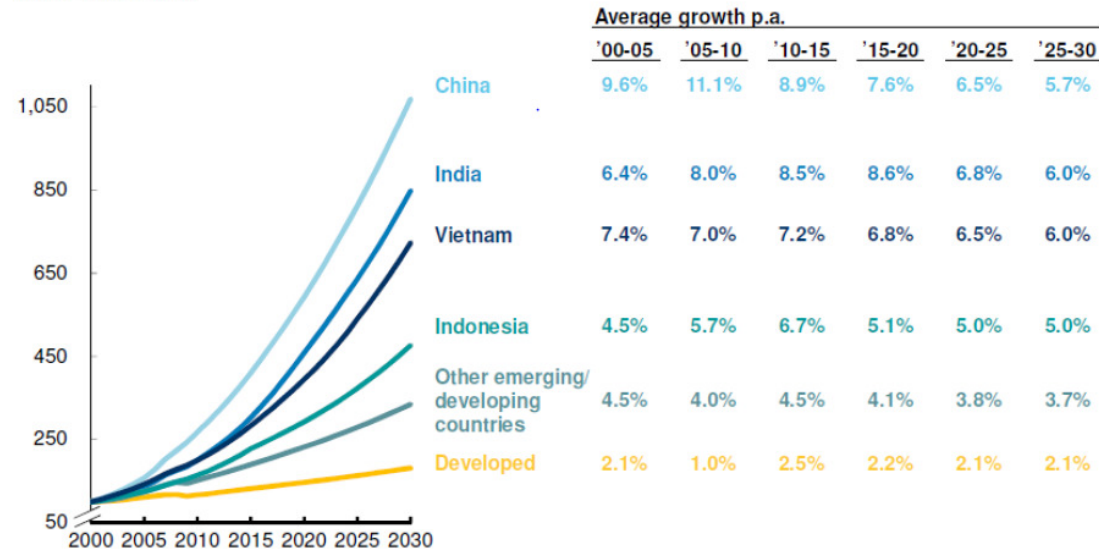
Image source: The Chinese UPLA urban planning network, <http://www.upla.cn>
Statistic derived from analysis of the United Nations, World Urbanization Prospects, The 2007 Revision Population Database



China needs to build 3 cities larger than Sydney every year until 2030 to accommodate rural to urban migration

Not Just China Economic growth projections - real PPP GDP

REAL PPP GDP
Index 100 = 2000

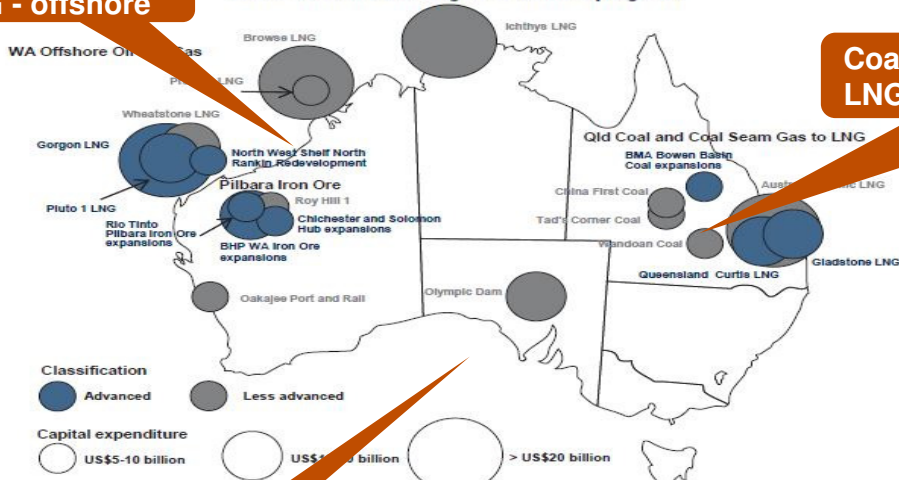


Source: IMF WEO, 2010; World Bank; Global Insight; Oxford Economic Forecasting; US Department of Agriculture Economic Research Service, 2010; PJP analysis

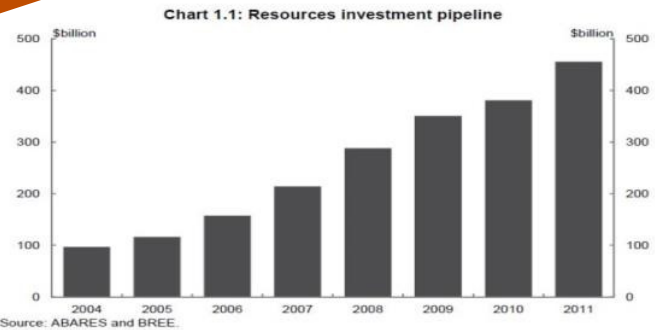
Mining & Resources - Australian Projects & Investment Pipeline

Iron Ore
LNG - offshore

Chart 1: Selected major resource projects



Coal – Energy & Met
LNG – via Coal Seam & Shale gas



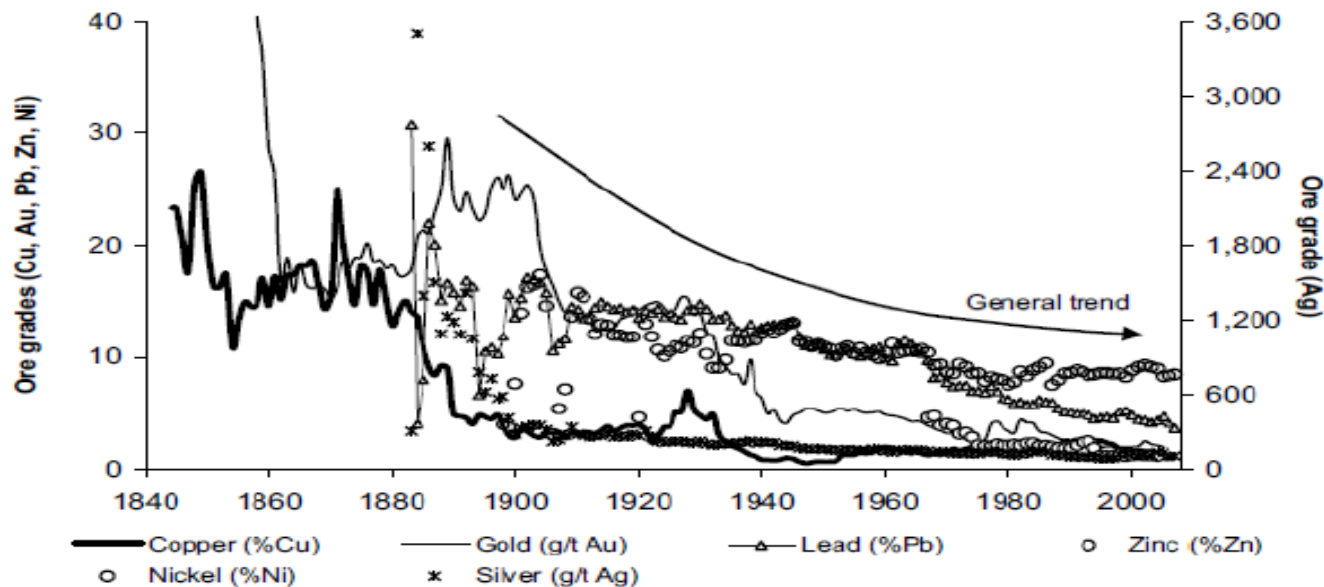
Note: ABARES defines advanced projects as either 'committed' or 'under construction' and less advanced projects as those undergoing feasibility (in some cases, pre-feasibility) study, or that have not yet been subject to a final investment decision since the completion of a feasibility study.
 Source: Indicative estimates based on ABARES, company reports and other publicly available information.

Copper
Uranium

Capital Project Spend (BRW, June 2012)

- Mining & Energy projects in Advanced stage of development = \$26.1b
- Further \$24.3b in earlier-stage of development
- Compared with 2000-2010 total spend of \$11.8b

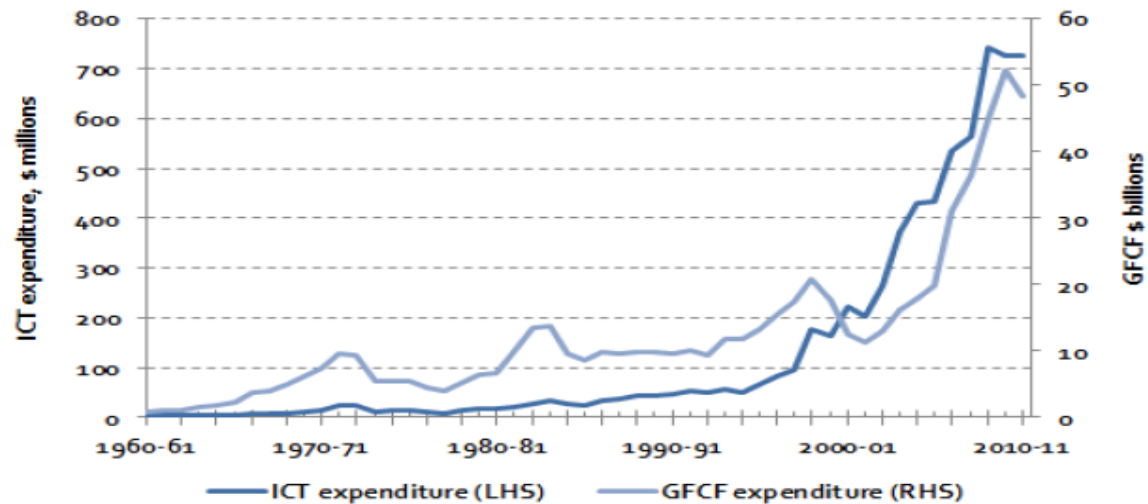
Decline in Ore Grade body leading to increased reliance on technology



Source: Productivity Commission (2008). Adapted from Mudd (2007).

Oil & Gas, Mining Industry – rising IT spend

Figure 3-1. Gross fixed capital formation in the Australian mining sector – Aggregate and ICT expenditure (\$ nominal)



Notes: Chain volume measures. ICT refers to expenditure on computers and peripherals, computer software, electronics and electrical equipment.

Source: ABS, 5204.0 Australian System of National Accounts; Adapted from Topp et al. (PC), 2008.

Why would the Microsoft Manufacturing & Resource Industry PoV matter to customers?

Microsoft is one of the few GLOBAL companies in the world who cover consumer through to business



I am one of 700 people world wide who are part of "industry" at Microsoft.
We can provide insight on where the industry is going

The answers to your questions might come from outside your industry

State of Business Intelligence

– finding answers to questions...

Only 28% of potential BI users have any meaningful access

– *Business Intelligence Purchase Drivers and Adoption Rates, Gartner*

32% of Excel users are comfortable with using it for “Advanced Analysis” e.g., PivotTables

– *Excel Segmentation Research*

31% of all BI initiatives partially meet or don’t meet the business goals originally set

– *BI Survey 9, BARC*



Knowledge workers spend too much time looking for, not enough time analysing the information.



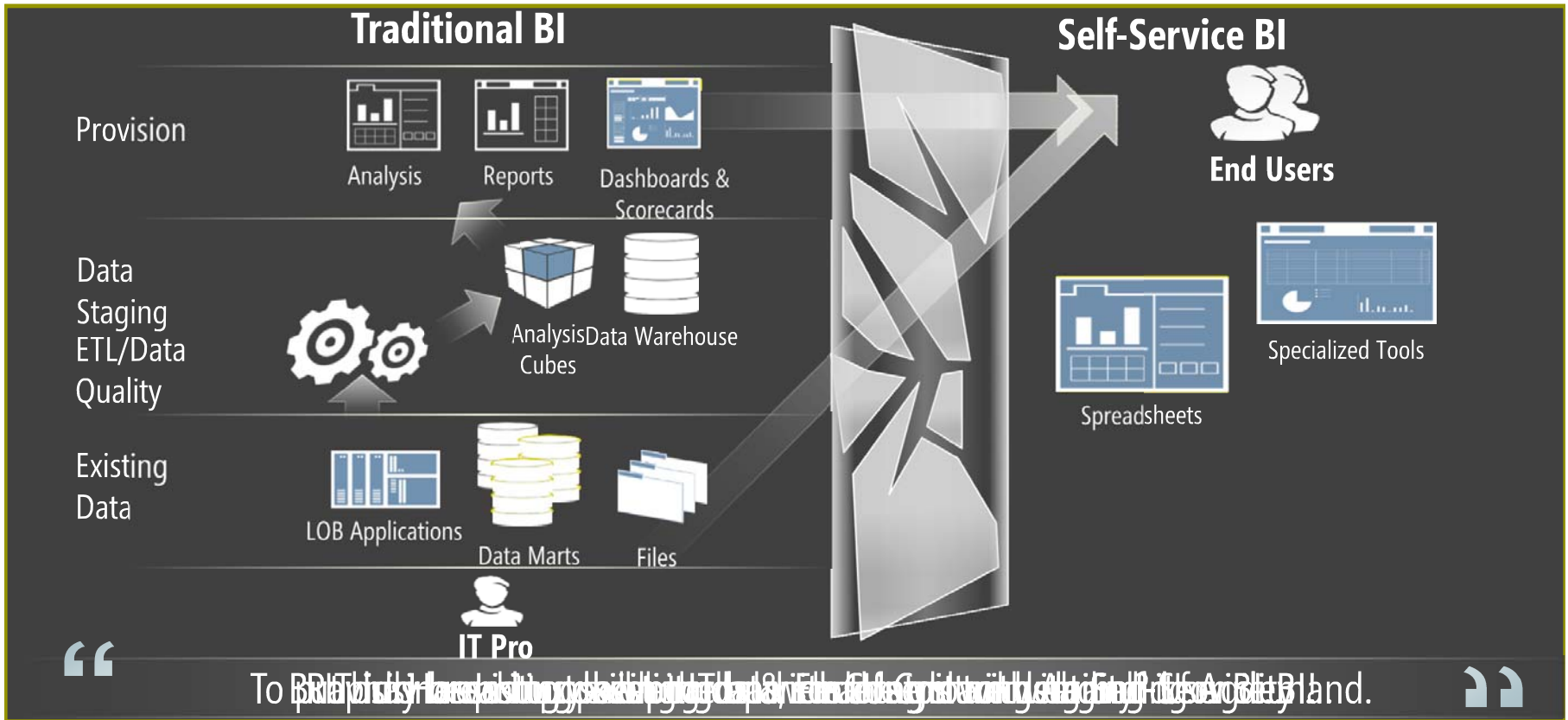
Lines between producers and consumers of information have largely disappeared.



Requirements change way too fast for IT and traditional technology to keep up.

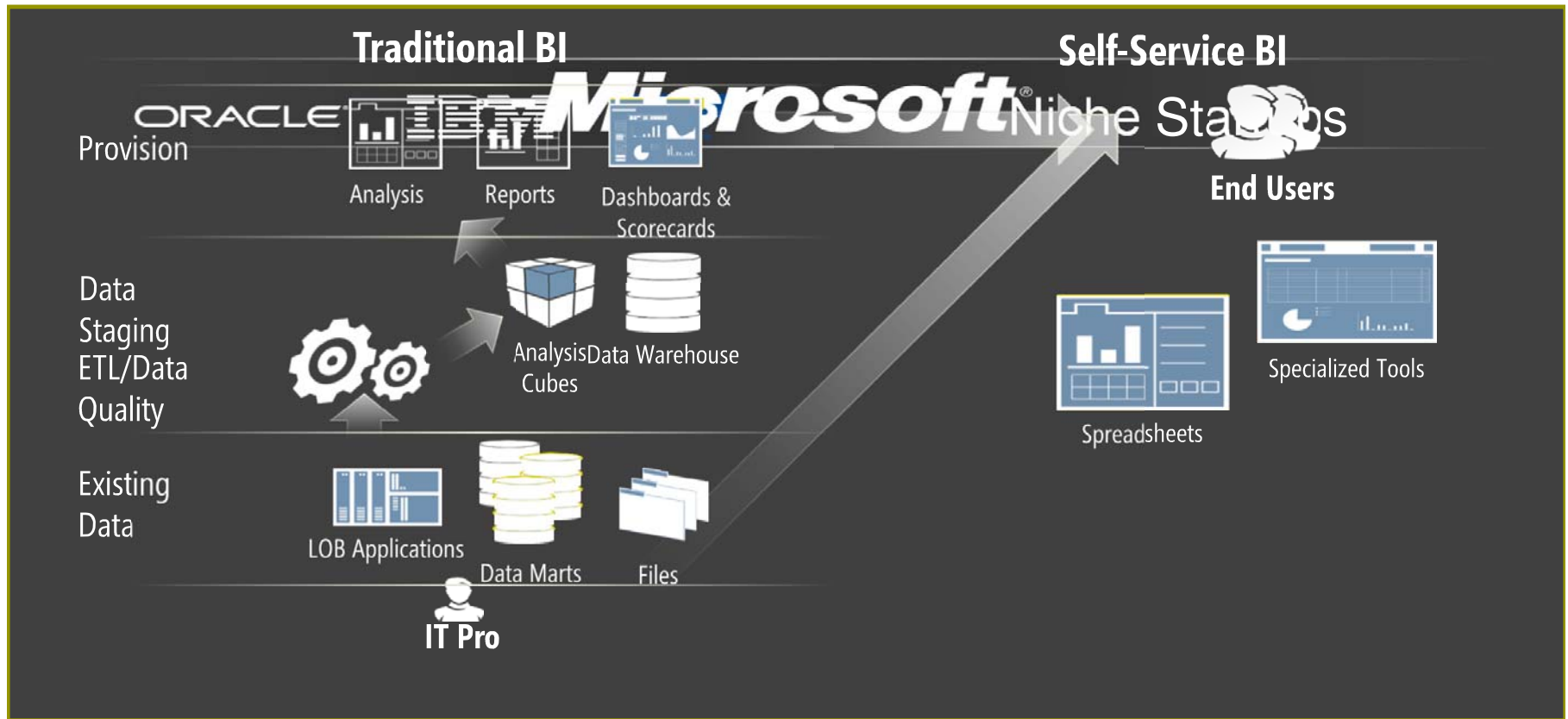


Evolution of BI



Evolution of BI

Microsoft®



Microsoft Business Intelligence is.....

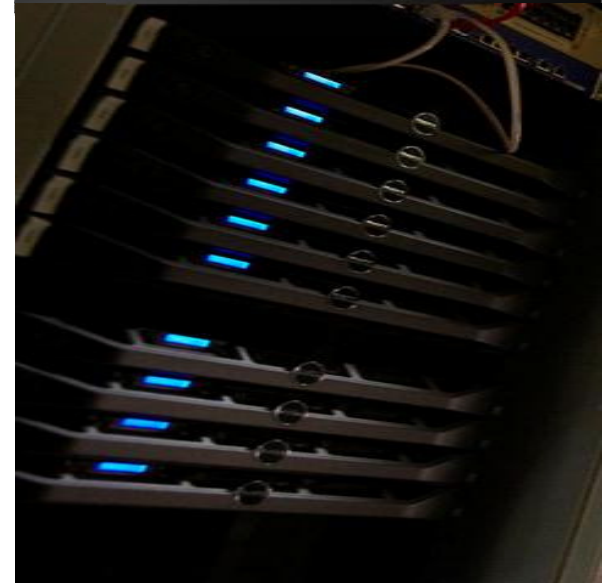
Familiar



Collaborative




Complete



Familiar

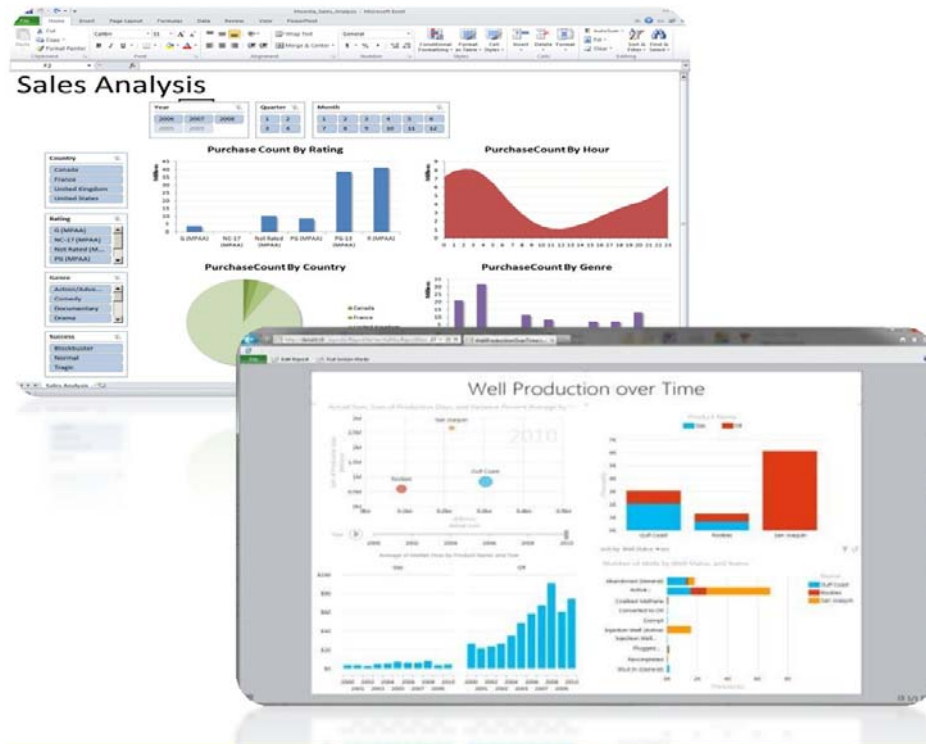
Collaborative

Complete



Familiar & easy to use tools
Enabling immersive data exploration

Empowering users through familiar tools



- Familiar experiences for rapid data exploration and discovery with **Excel**.
- Powerful data mash-up capabilities for self-service analysis with **PowerPivot**.
- Rapid data exploration and visualization with **PowerView**.

Power View



Highly Visual Design Experience

- Interactive, web-based authoring and sharing of information
- Familiar Microsoft Office design patterns
- Powerful data layout with banding, callout and small multiples visualisations



Rich metadata-driven interactivity

- Fully integrated with PowerPivot and BI SM
- Drive greater insight through smart and powerful querying
- Zero configuration highlighting and filtering

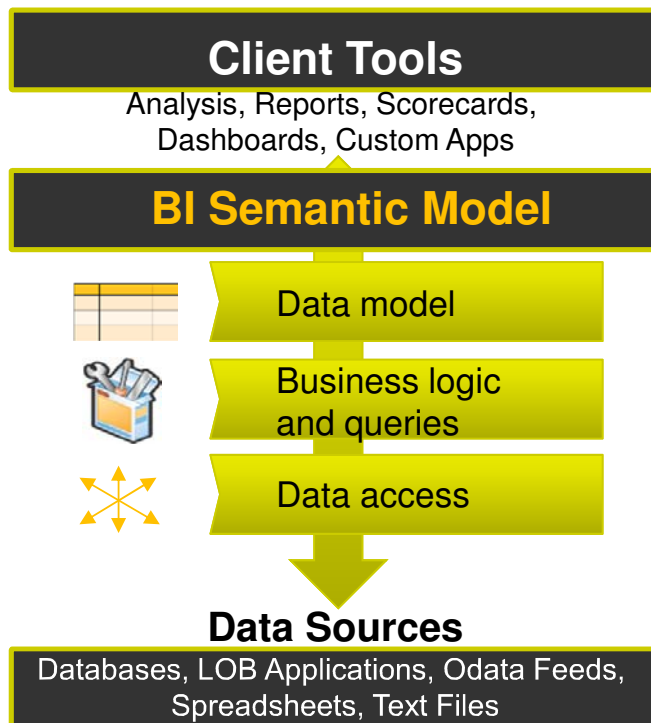


Presentation-ready at all times

- Turn pervasive information into persuasive information
- Deliver and collaborate through SharePoint
- Interactive at all times

BI Semantic Model

A single model for all End User Experiences



BI Semantic Model

- Enables a wide spectrum of capabilities – from dashboards and scorecards to reports and analytics.
- Enhance productivity with design aids and best practices.

New Tabular mode:

- Enable faster iteration and reduce complexity in design.
- In-memory column store technology
- Import PowerPivot Models into BI Development Studio in Visual Studio 2010

Familiar

Collaborative

Complete



Connect people & information
On the most popular collaboration platform

Better decisions through Ease of collaboration



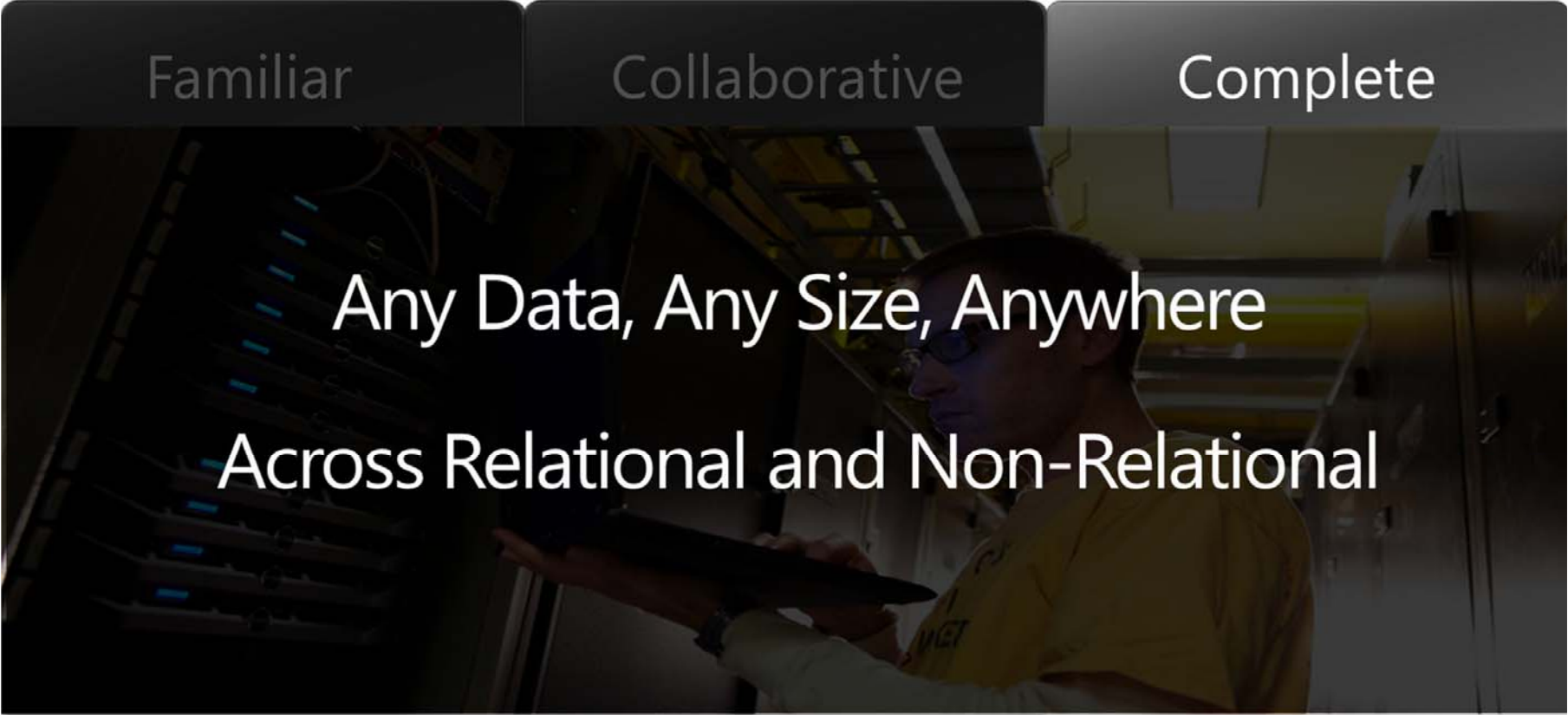
- Find expertise & valuable information
- Connect with colleagues;
- Engage in team discussions and threaded conversations
- Share & collaborate on documents

... in **SharePoint**.

Familiar

Collaborative

Complete

A person wearing a yellow shirt and glasses is looking at a tablet device in a server room. The background shows server racks with blue lights.

Any Data, Any Size, Anywhere
Across Relational and Non-Relational

Insights for any data, any size, anywhere



Insight



Time Series



Relational



Unstructured



Examples in M&R sector

Microsoft®

Asset Browser

- AVR1
 - CRA
 - DIA
 - AVD1
 - Furnace D111
 - Furnace D112
 - Pump D111
 - AVD2
 - AVD3
 - REA
 - TRA
 - AVR2
 - AVR3

Refining Overview

Site	Safety	Reliability	Performance
AVR1	81	83	92
AVR2	72	62	93
AVR3	76	69	83
All Sites	73	67	88

KPI Details

Safety	UAM	Actual	Target	Index	Status
LTR	days	19.8	13	76.5	🔴
Near Misses	no	13.6	10	73.5	🔴
Accidents	no	11.8	5	42.4	🔴
Succ Imp	%	293	300	97.7	🟢
Total Avg				72.5	🔴

Crude Oil

\$76.66 ▼0.14 0.18%

14:33 PM EDT - 2010.05.11

Real-time market prices

Operator Logbook

Title	Category	Site	Unit
Site: AVR1 (2)			
Area: DIA (2)			
Energy consumption of Pump D111 above normal level	Maintenance Work	AVR1	AVD1
Partial power fails unit AVD1	Equipment Failure	AVR1	AVD1

Current newsfeeds from internal or external sources

RSS Oil & Gas Journal News

MARKET WATCH: Oil, gas post biggest price gains in weeks

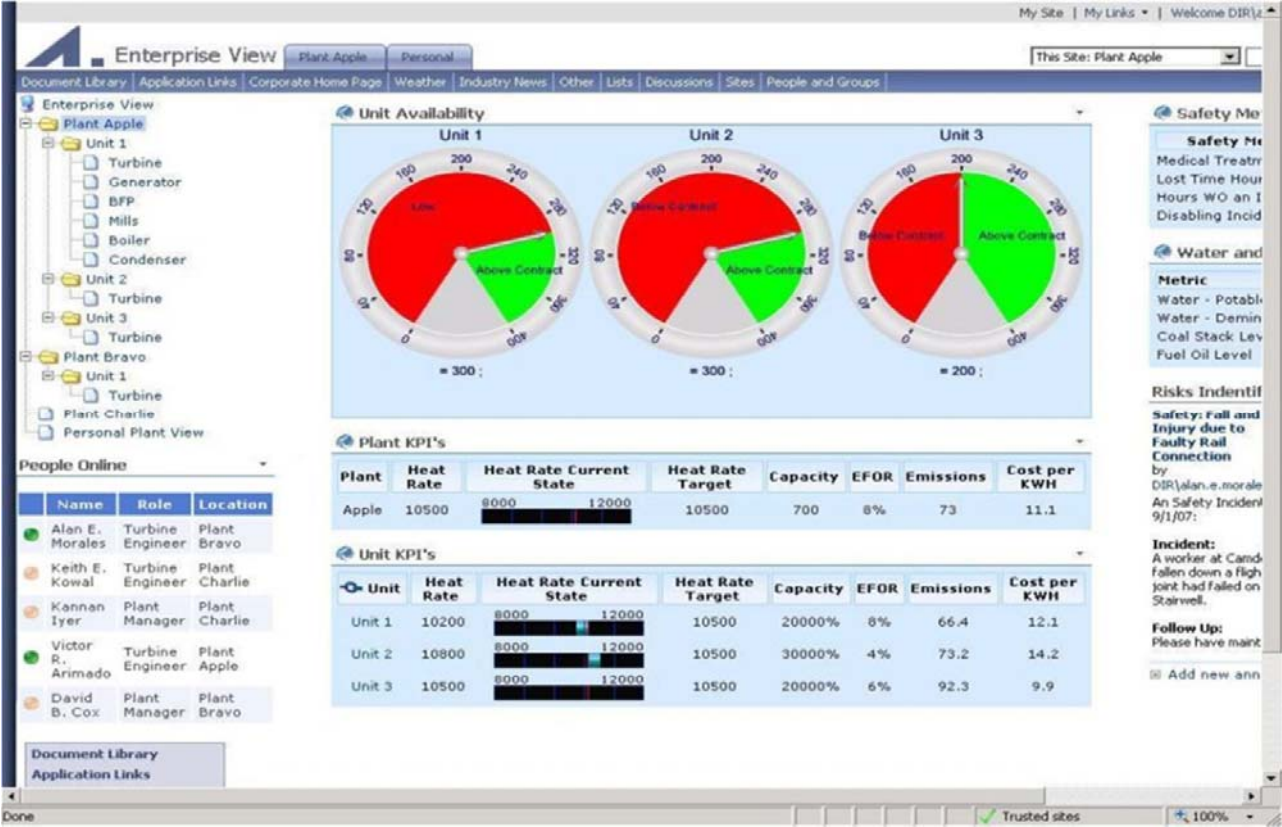
Examples in M&R sector



The screenshot displays an OSIsoft dashboard with several components:

- Ad hoc Trending:** A line graph showing data over a 2-hour period. A callout box states: "OSIsoft Ad-hoc trending gives access to all data in the process data historian".
- Table:** A table with columns for 'Actual', 'Target', and 'Schedule Actual vs. Schedule [%]'. A callout box points to it: "Integration of OSIsoft ProcessBooks with real-time data".
- Gauges:** Two circular gauges showing 'Actual [t/h]' values.
- Cracking Area (CRA):** A process flow diagram showing units like 'CRA', 'CFC', 'CFCB', and 'CFCM'.
- Tracking Overview:** A table listing events like 'Entering unit CFCC without clearance' and 'Entering Area CRA, Unit CFCC'. A callout box points to the 'Contacts' list: "Contact list allows to show all current operators and shift managers. Web-part allows to open a chat screen or to directly call the contacts.".
- Contacts List:** A list of names organized by region: Central Region, Eastern Region, and Western Region.

Examples in M&R sector



Demo



Excel 2013 and PowerView



Question of everybody's mind

How many countries have sent more female boxers to the London Olympics than men?

Q & A



THANK YOU

Brought to you by  **OSIsoft.**

OSIsoft. REGIONAL SEMINARS 2012

© Copyright 2012 OSIsoft, LLC.