



OSIsoft®
**REGIONAL
SEMINARS** 2012
The **Power** of **Data**



PI System Roadmap – New and on the Way

Presented by **Michael Luo, Sales Support Engineer - OSIsoft**

Agenda and Expectations

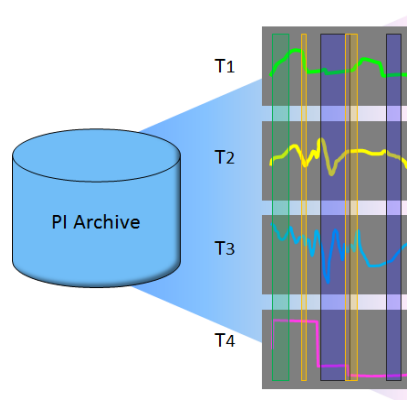
- This talk assumes:
 - You know the PI System basics
 - You want to hear about what is coming to the PI System in the >6 month horizon
- Very few specific dates
- All information is subject to change
- We want your feedback and suggestions!

PI System Themes - Future



Asset-Centric PI

Manage data via
Asset context –
Reuse many times



Event Frames

Identify and use
important events
and related data



Mobile

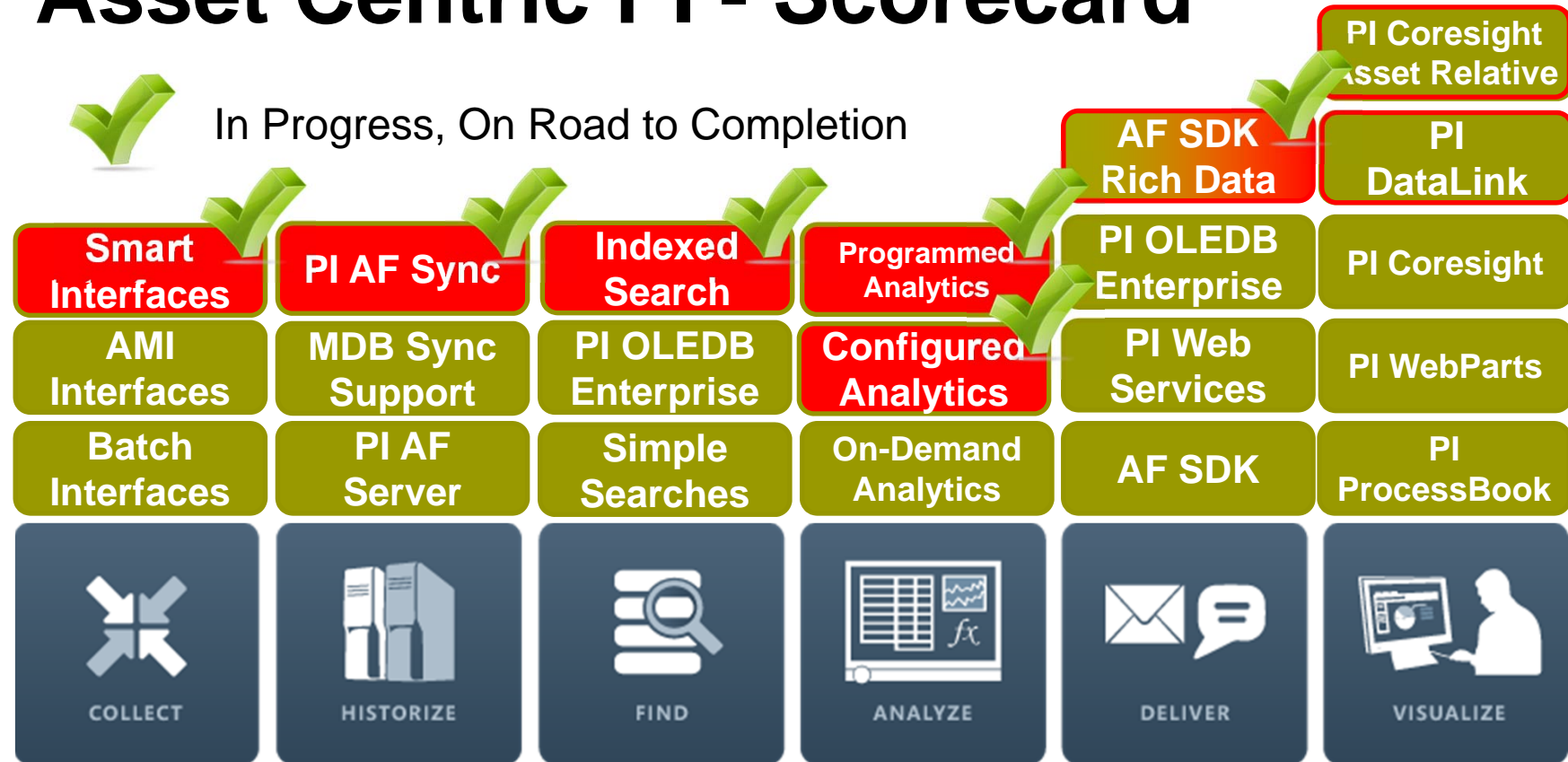
Many Devices
Touch Centric
Role Focused



Cloud

More Data
Access Anywhere
Trans-Enterprise

Asset Centric PI - Scorecard

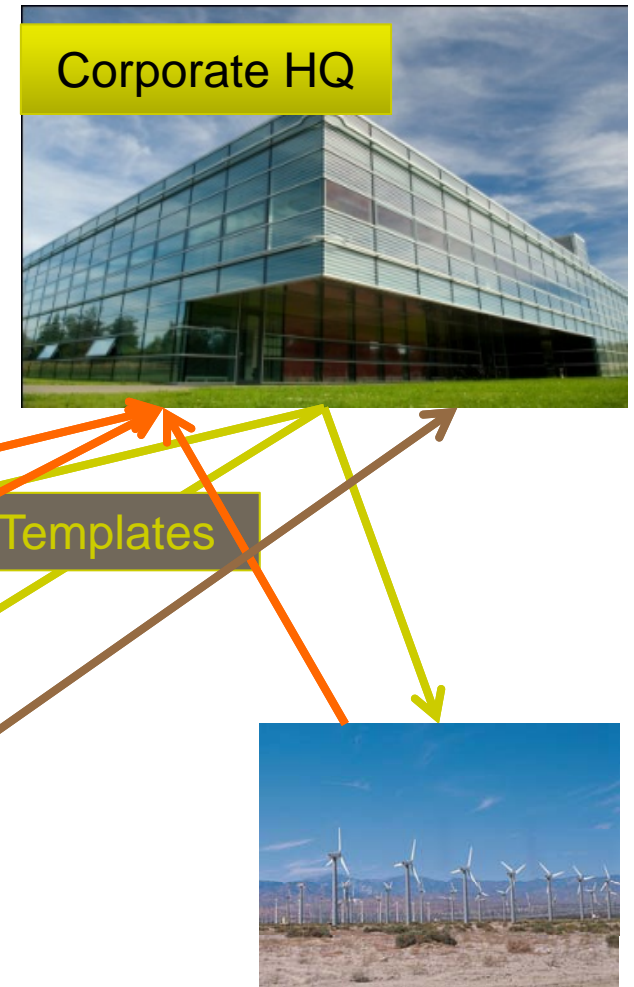




AF Centric PI system

AF to AF Scenarios

- Implement corporate standards
- Ensure commonality across enterprise
- Configuration changes, updates
- Event Frames and data to support analysis and KPIs



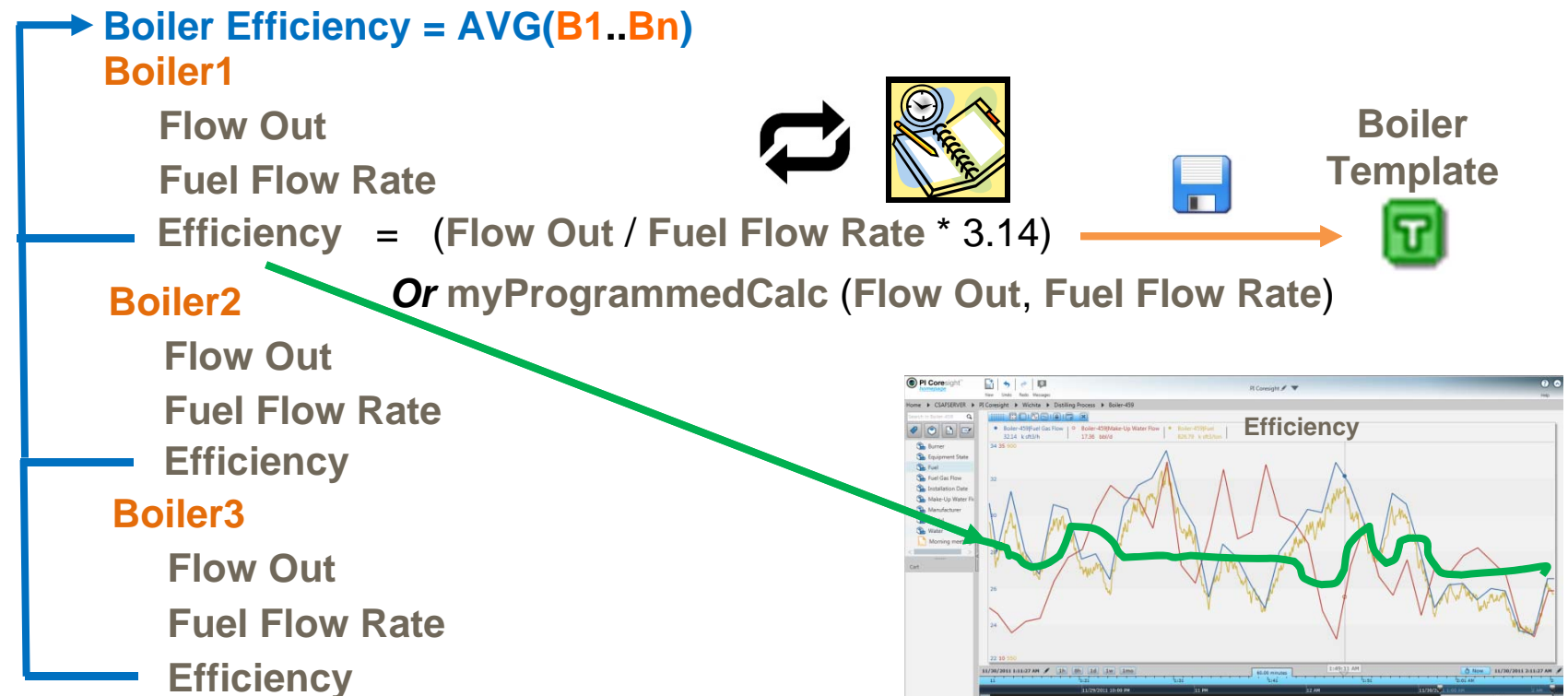


Project Abacus

Configured and Programmed
Calculations for PI AF

Project Abacus Use Case

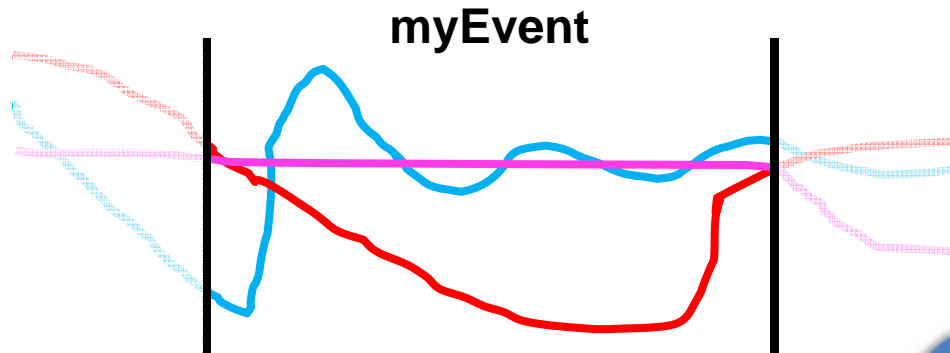
Extruding Process



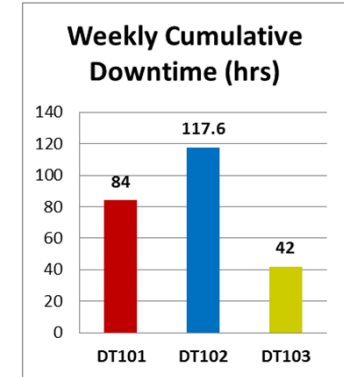
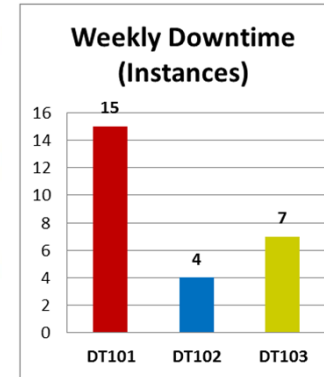


Event Frames

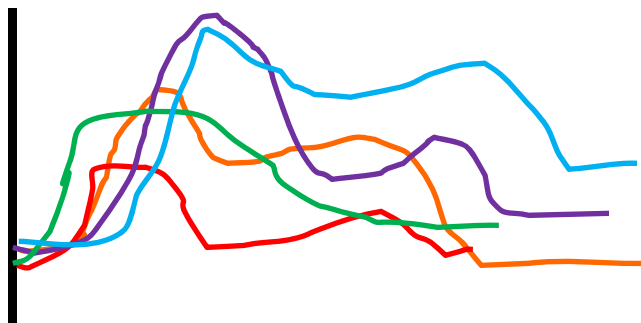
Simplify Data Analysis



Perform Asset Comparisons



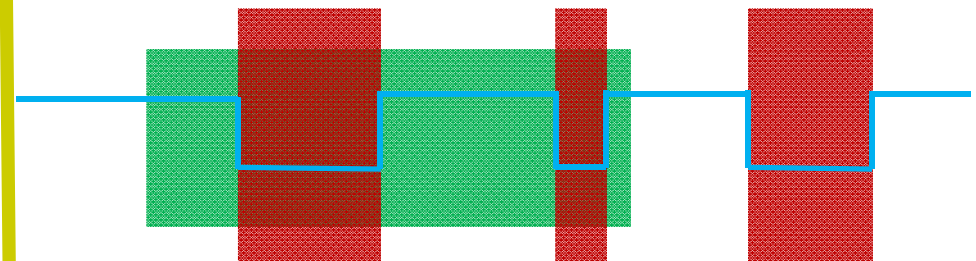
Event Overlay Trend (Temp)



Name	Temp.Max
EF1	122.47
EF2	109.34
EF3	112.73
EF4	98.61
EF5	125.24

Downtime Events for Product XYZ

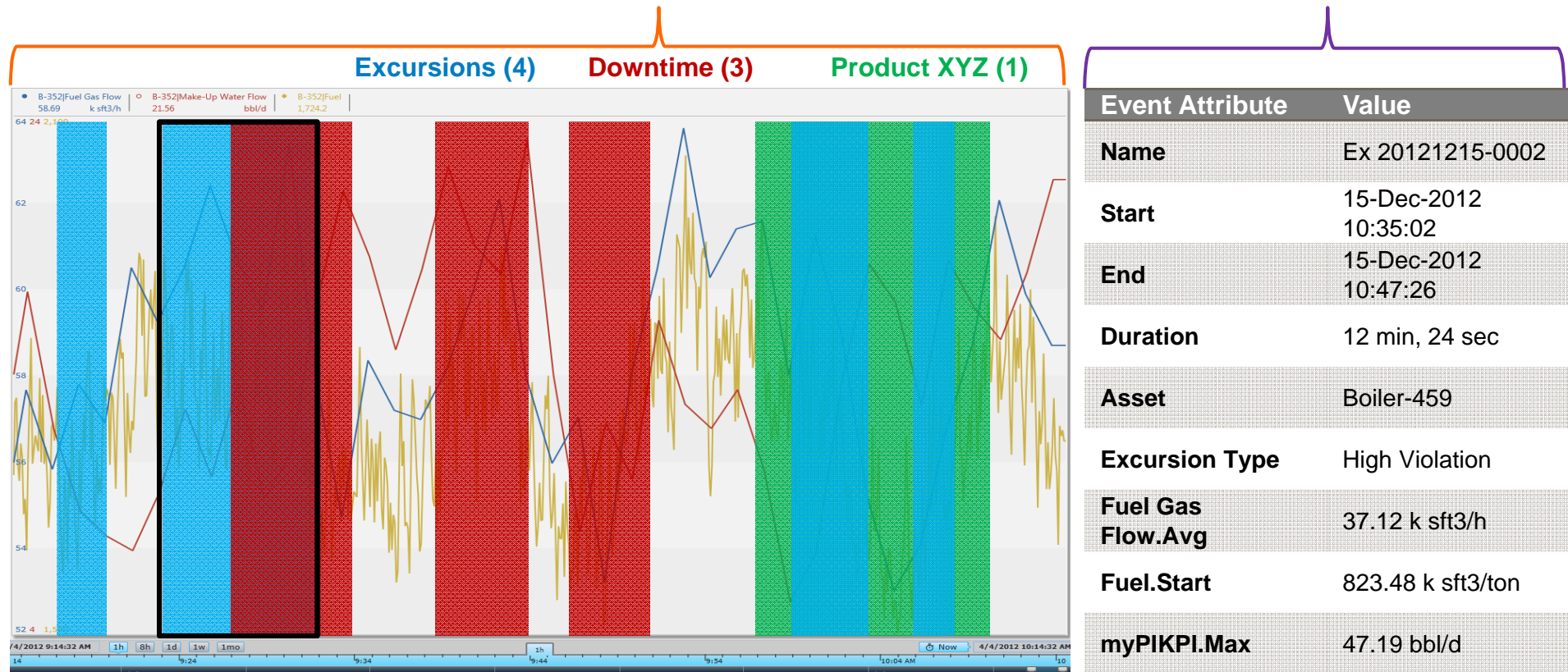
Product XYZ (1)
Downtime (2)

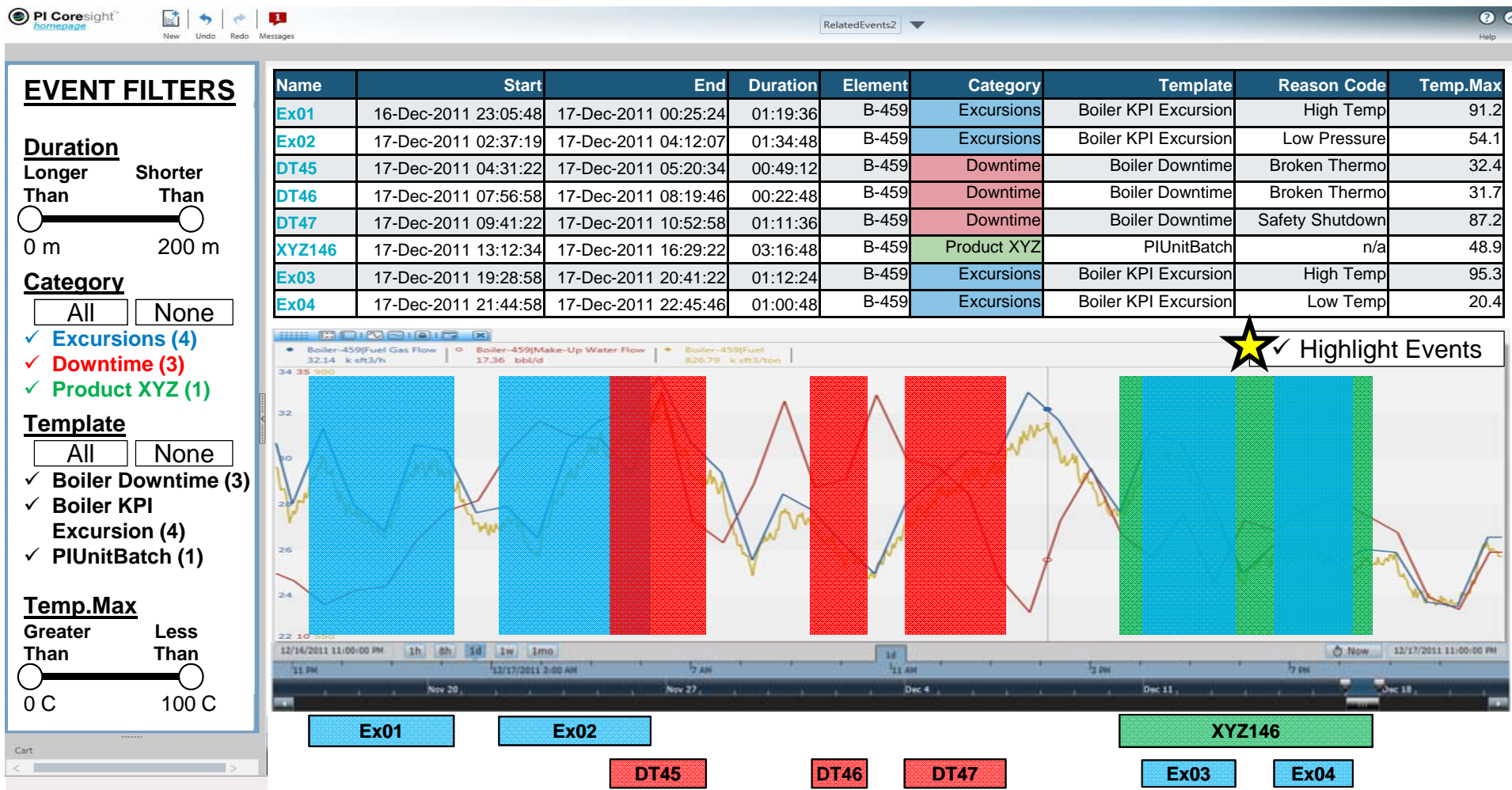


Perform Event Comparisons

Discover Event Interrelationships

PI Event Frames is a core capability of the PI Server to record important process or business **events** and help you find the **related data**.





Event Generation in Abacus



|Efficiency

|Fuel Flow Rate

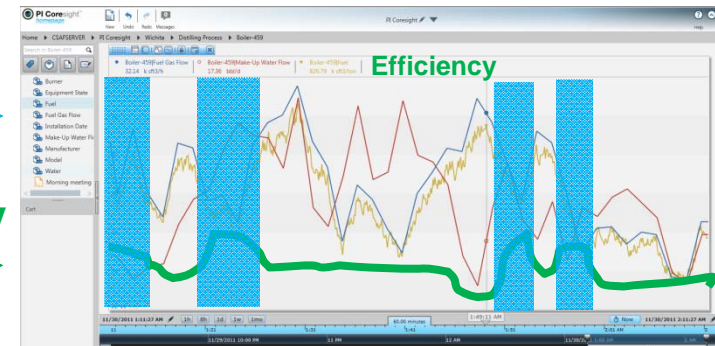
|Flow Out

“Abacus”



myEF

|Efficiency



T $\text{Efficiency} = (\text{Flow Out} / \text{Fuel Flow Rate} * 3.14)$

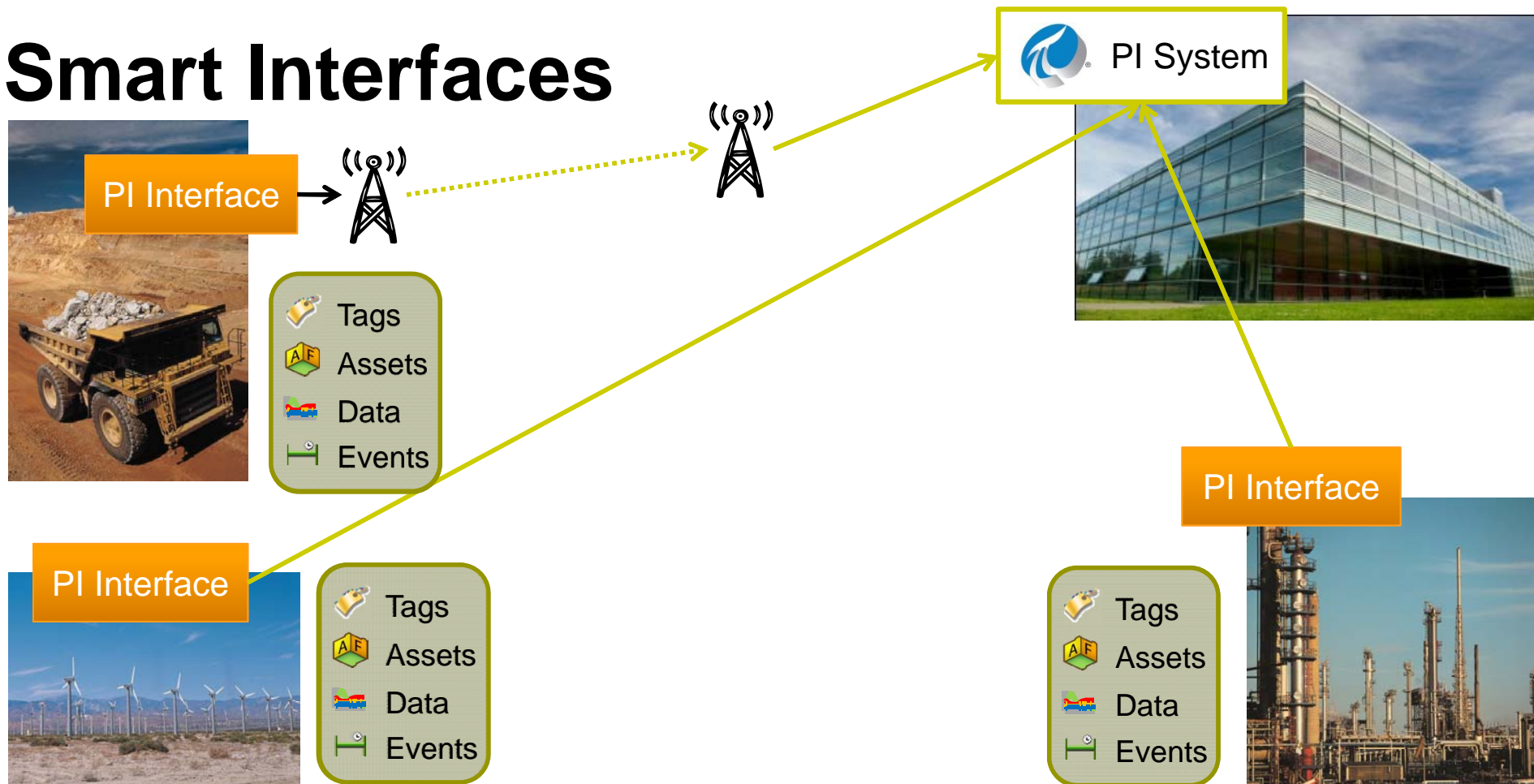
T $\text{myEF.Start} = (\text{Efficiency} > \text{LIMIT})$

$\text{myEF.End} = (\text{Efficiency} < \text{LIMIT}) \text{ AND } (\text{Fuel Flow Rate} > 80)$

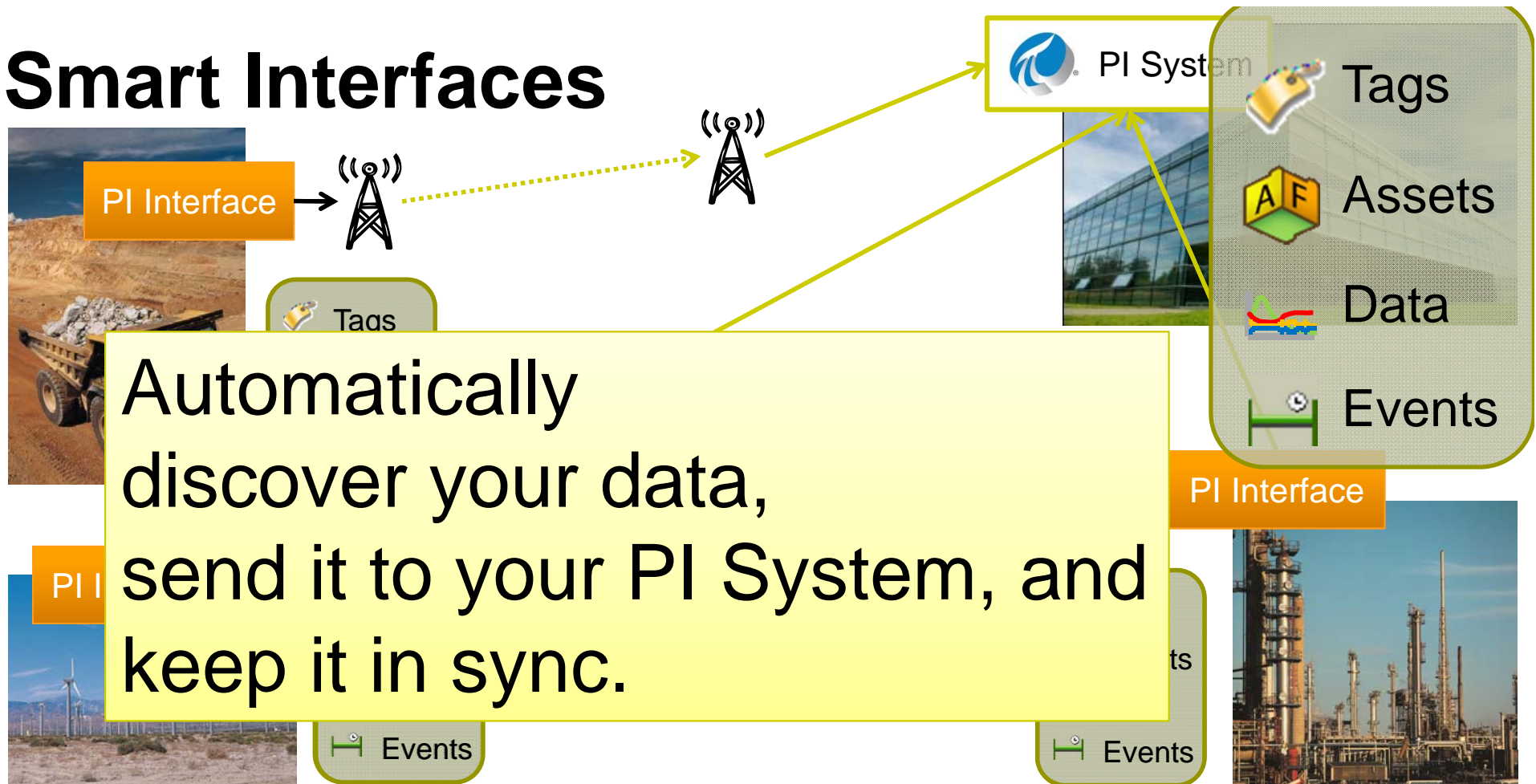
2011	2012		2013		FUTURE
4Q	1H	2H	1H	2H	
Wave 1 – Partner and Early Adopters	Wave 2 – Event Frames for the Mainstream				
	<div>Goal</div> <div> <u>End-to-End Event Frames Experience</u> <ul style="list-style-type: none"> Ability to generate Event Frames automatically Several event frame visualization options </div>				
	<div>Wave 3 – Batch Moves to Event Frames</div> <div>Goal</div> <div> <u>Move PI Batch Customers Forward</u> <ul style="list-style-type: none"> Batch to EF Migration Functional Equivalency with existing Batch Clients </div>				

NOTE: Future dates are subject to change. Last Updated: 04-2012

Smart Interfaces



Smart Interfaces



More to search than ever...



Visualization

- Displays, captions, text
- PI Points, AF Elements & Attributes

Data Access

- Frequently accessed Data Streams
- Related Data Streams
- Workstation data sources

Analysis

- Performance Equations / Totalizers / Alarms
- ACE Calculations / Notifications / Event Frames

Directory

- AF Element Attributes / AF Elements
- AF Element Templates

Server

- Data Streams, PI Properties, By Value (> 75)

Interfaces

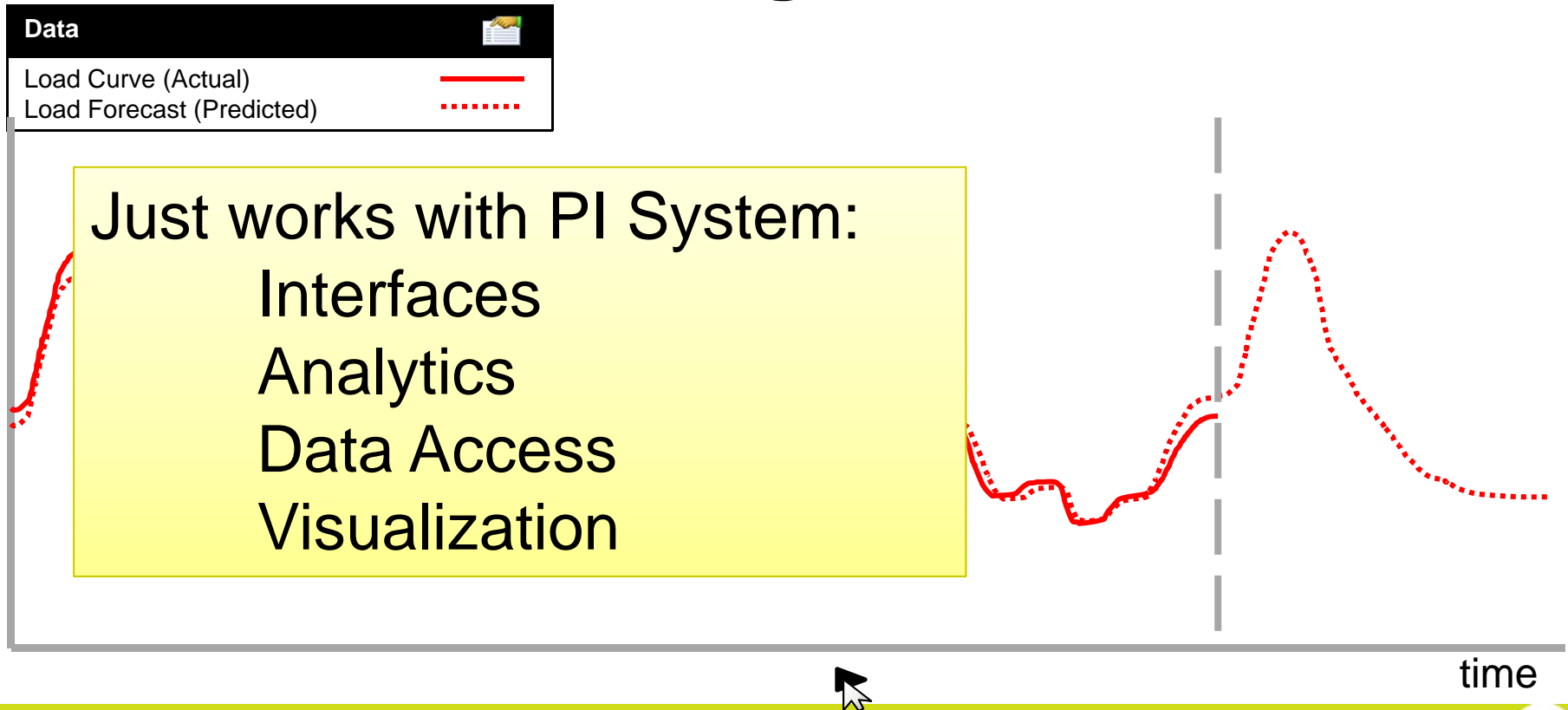
- Data sources
- Non-PI data

Find - PI System Search



- Optimized Search Engine for the whole PI System
- Indexed for scale and high performance
- Can crawl many PI Servers*
- Ranked and Related Results
- Includes client artifacts:
 - PI ProcessBook Displays, PI Coresight Displays
- Shared User Experience

Future Data Coming – Next PI Server



PI Data Access, longer-term

PI System SDK

A single high performance SDK that allows you to access all PI System data

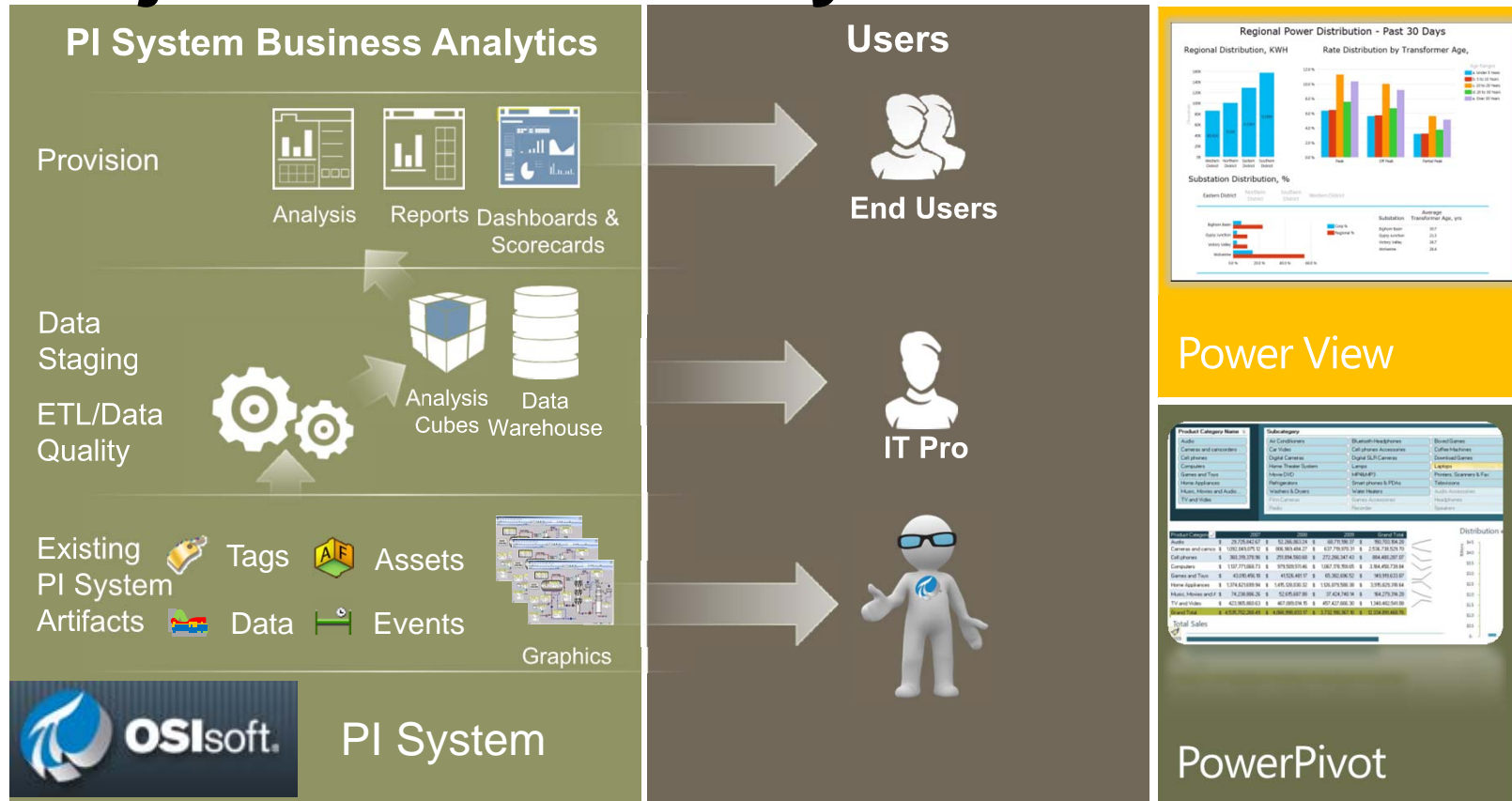
RESTful Web Services

Emerging web service standard, ideally suited for mobile and cloud

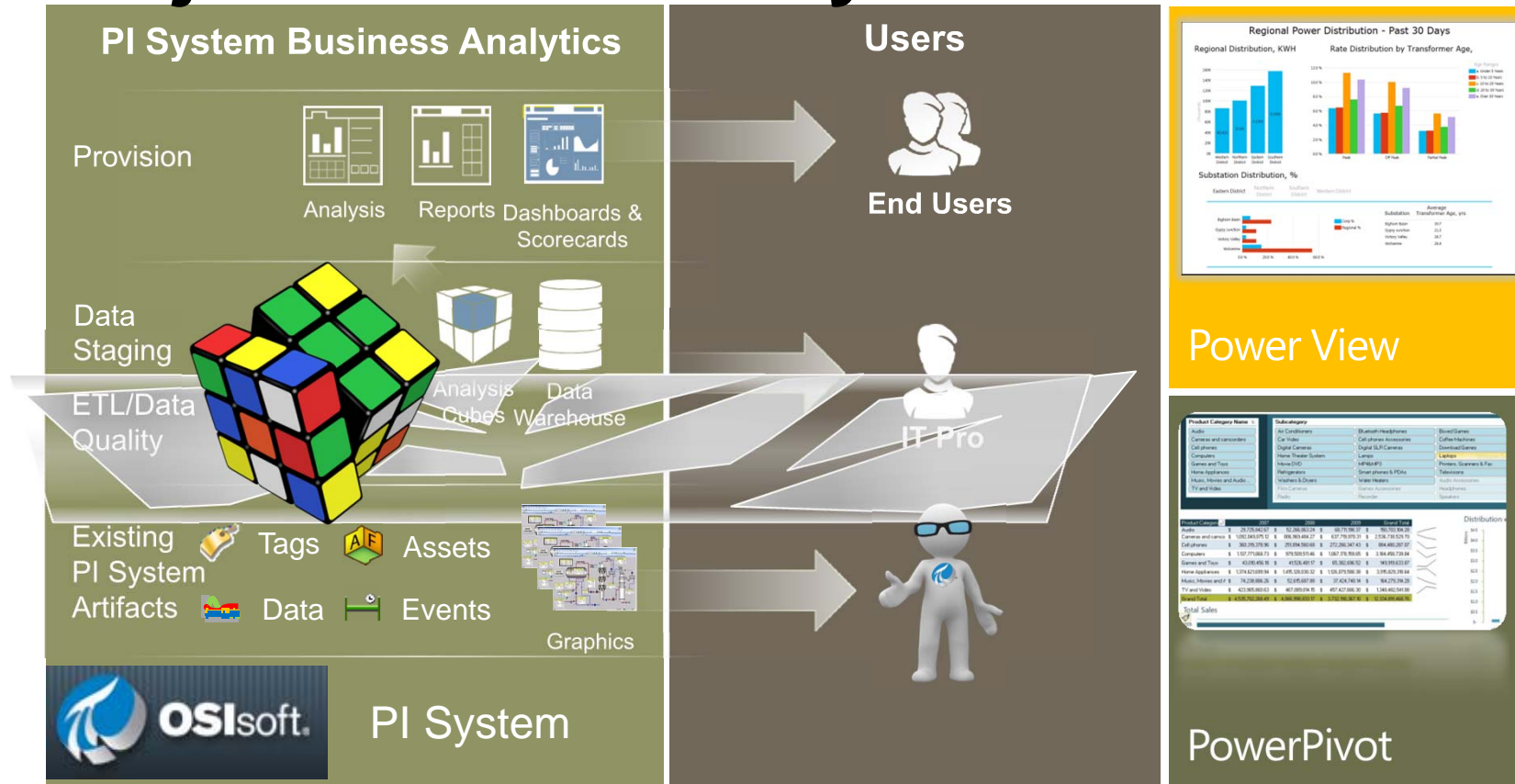
Integration Services

Makes business system integration easy, not just possible (ERP, BI)

Project Rubik – Why?

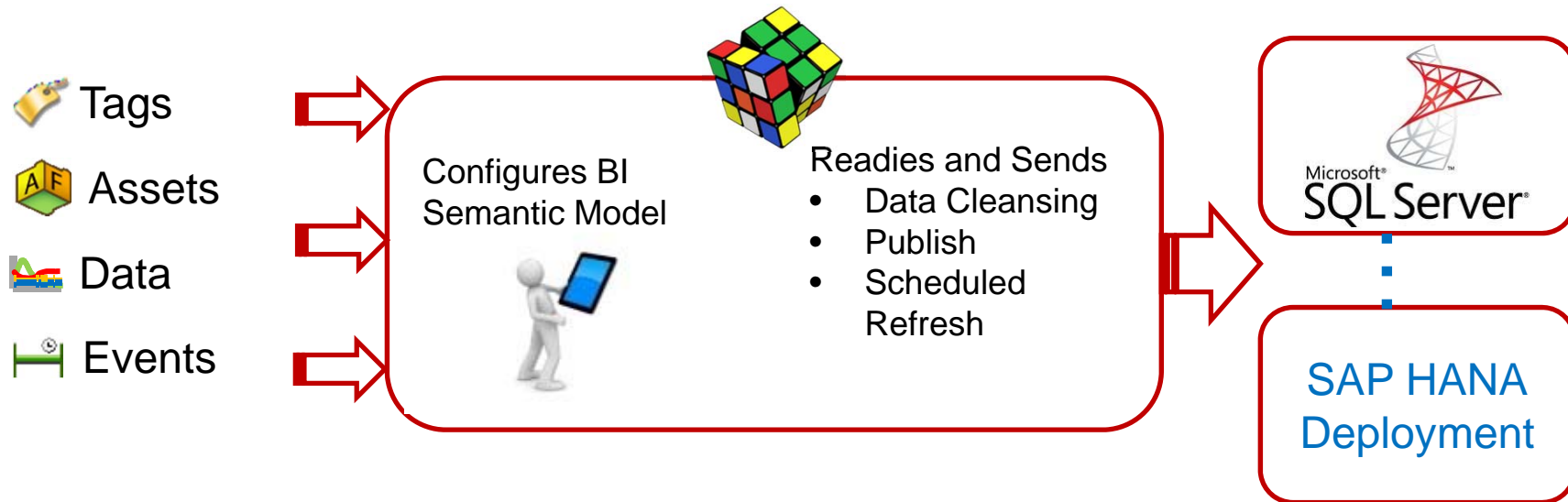


Project Rubik – Why?



Project Rubik

- Bridge the gap between PI System experts and BI Users
- Allow PI System expert to select the data
- Leverage BI Visualization Tools from Microsoft, SAP (and others)



Visualization Landscape

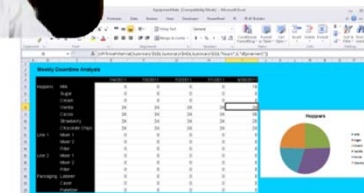
PI Coresight:
Ad Hoc Analysis & Collaboration



PI WebParts: Composite Apps, Shared broadly



PI DataLink:
Reporting and table based analytics in Microsoft Excel

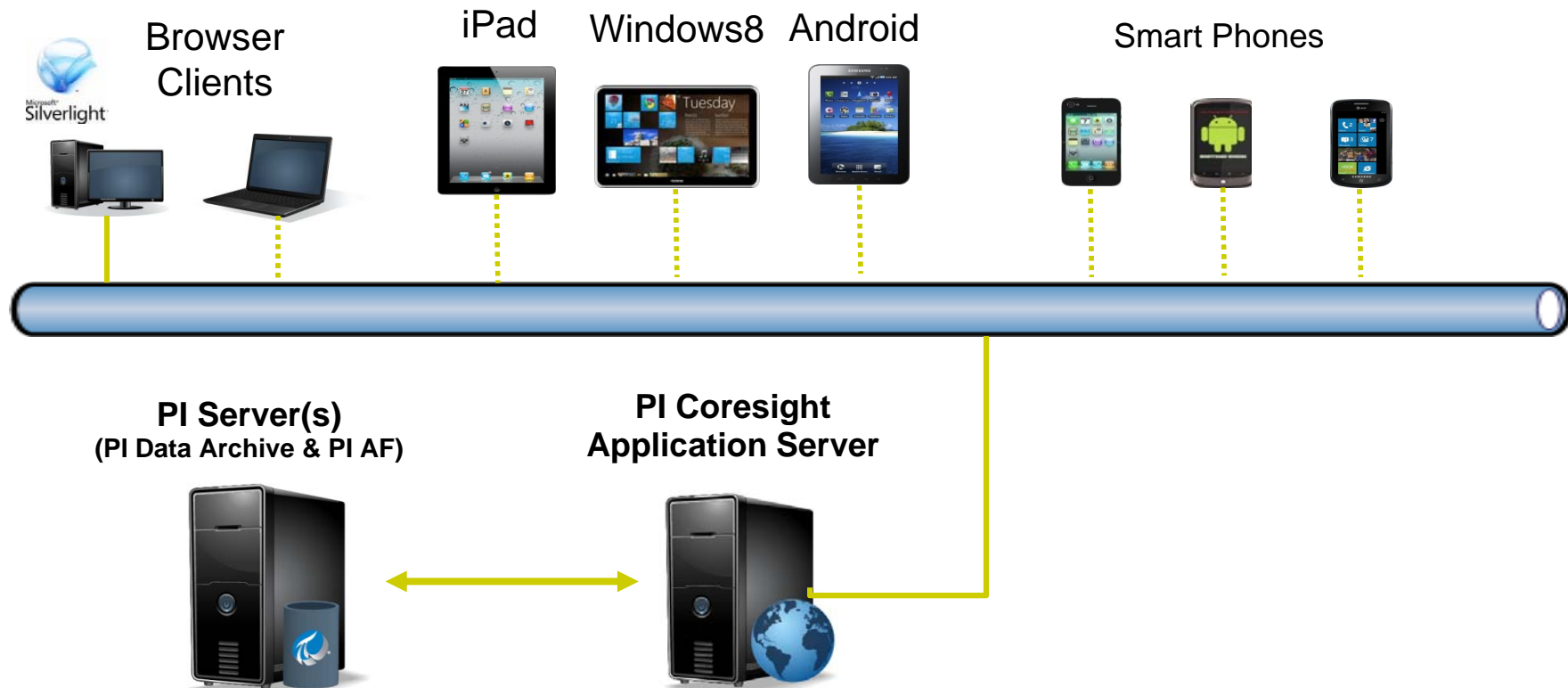


PI ProcessBook:
Display authoring and Process monitoring



PI on Mobile Devices

PI Coresight with Mobile Clients



PI Coresight Tablet Edition – Target Audience

- Plant / Operations Management
 - Most likely to have iPad or similar device
 - Overview of how the plant/utility is running
 - Failures, Efficiency, KPIs, Actual vs Forecast
- Process Engineers / Corporate Planners
 - Identifying problems
 - Optimize processes – plant to plant
 - Create Content / Displays for management
- Maintenance
 - Manual Data Entry / Problem Recording
 - Troubleshooting – documents and real-time
 - Calibration

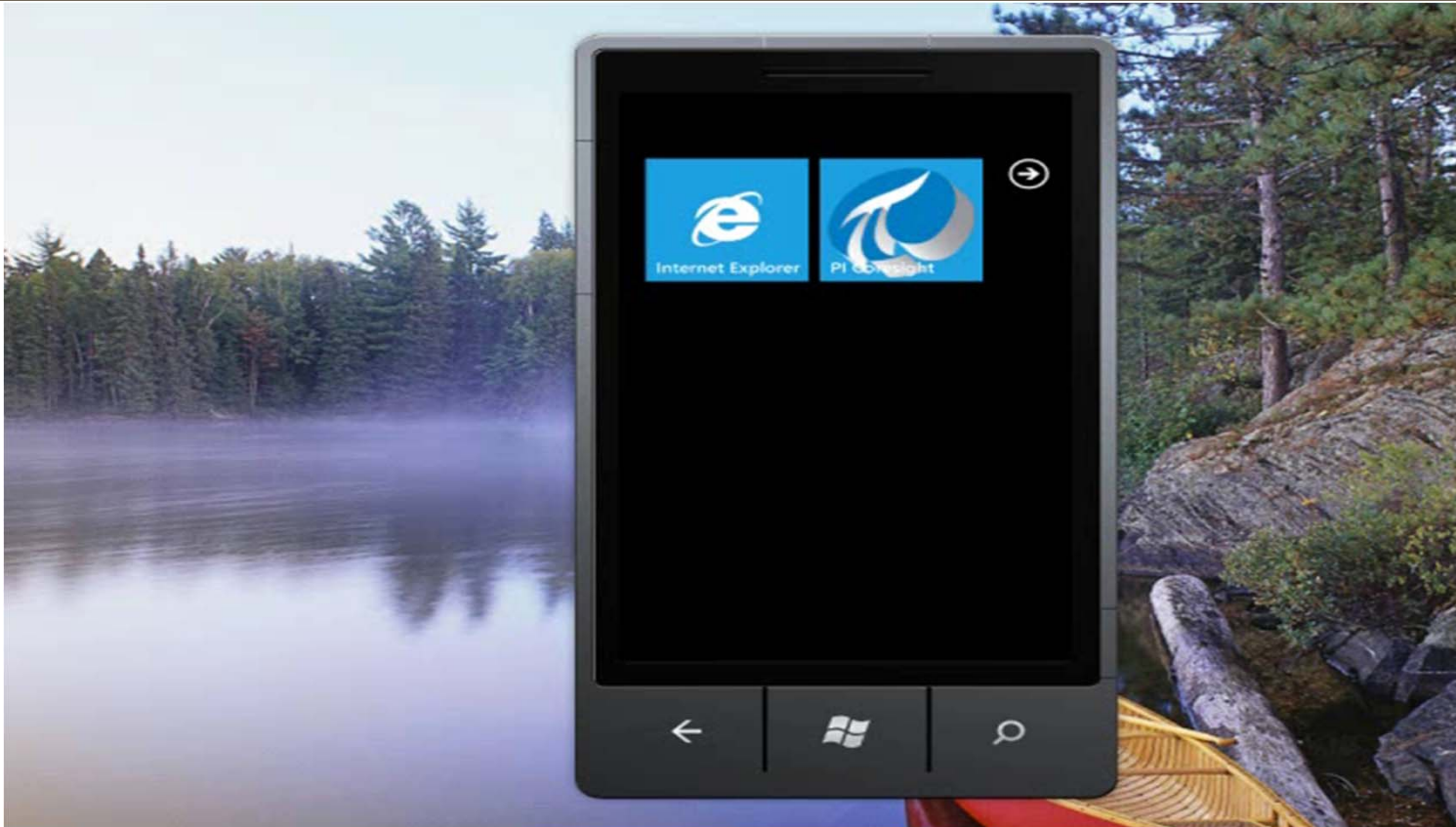


PI Coresight Phone Edition – Target Audience

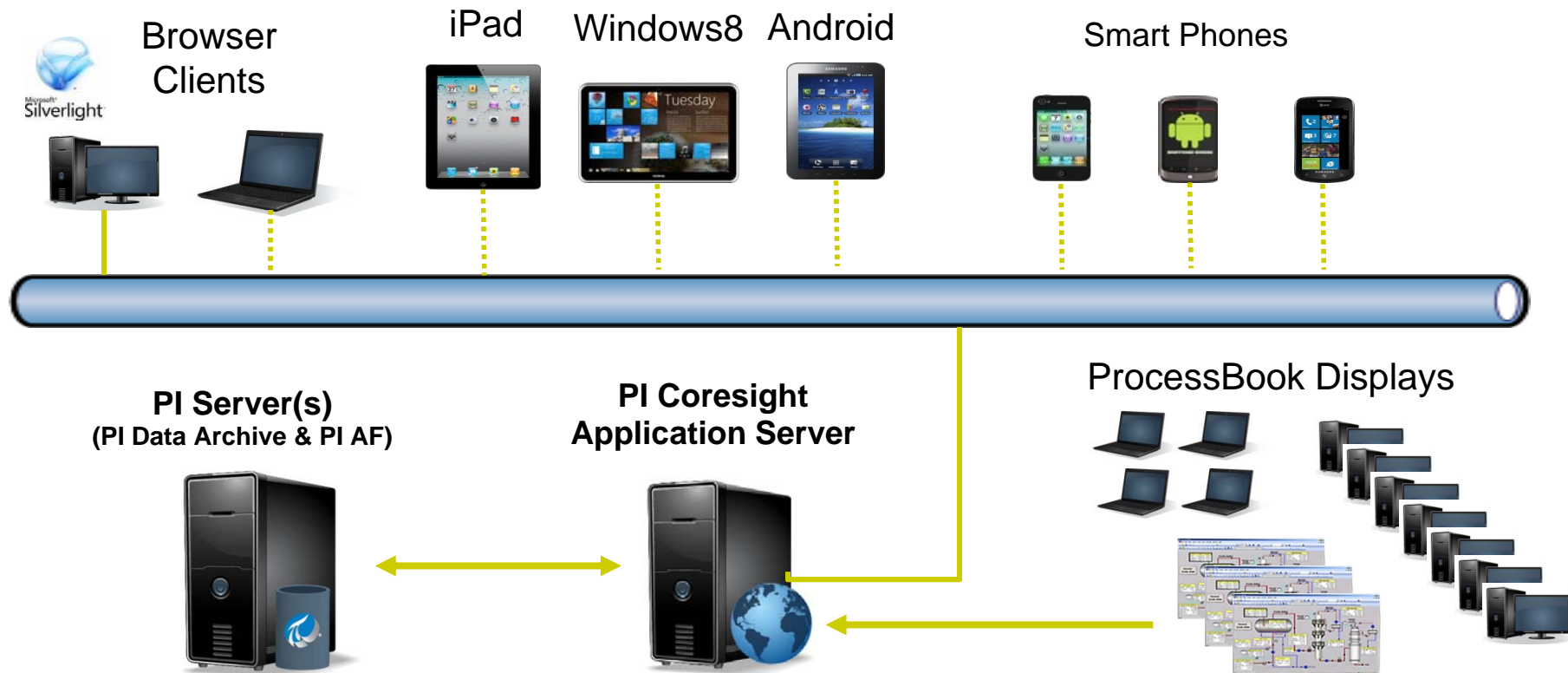
- Check in with Plant from Home / Road
- Tell me if something is wrong!
- Focus on Notifications, Acknowledge, Dispatch, and Escalation
- Give me some basic data related to notification
- Outside of plant - 3G, 4G, or public WiFi
- Personalization



PI Coresight Phone Demo

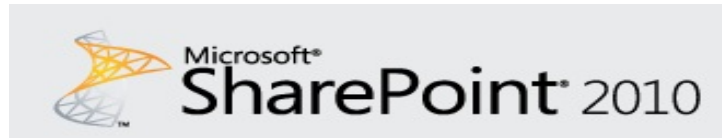


PI Coresight – ProcessBook Display Viewer



PI WebParts 2012

Support for SharePoint 2010 and SharePoint "15"
Become a better SharePoint corporate citizen
Become a more "IT" friendly product
Replace obsolete technology
Set the stage for OS and Browser independence, Mobile



Remote Data Services
WSP Installs
Can leverage Adobe SVG Viewer if needed
Support for IE 8



Remote Data Services
WSP Installs
Visualization using Web Standards
Support for IE9, IE10, Firefox, and Chrome



PI on Cloud

Evolution of Operating Systems



PI Cloud Initiatives

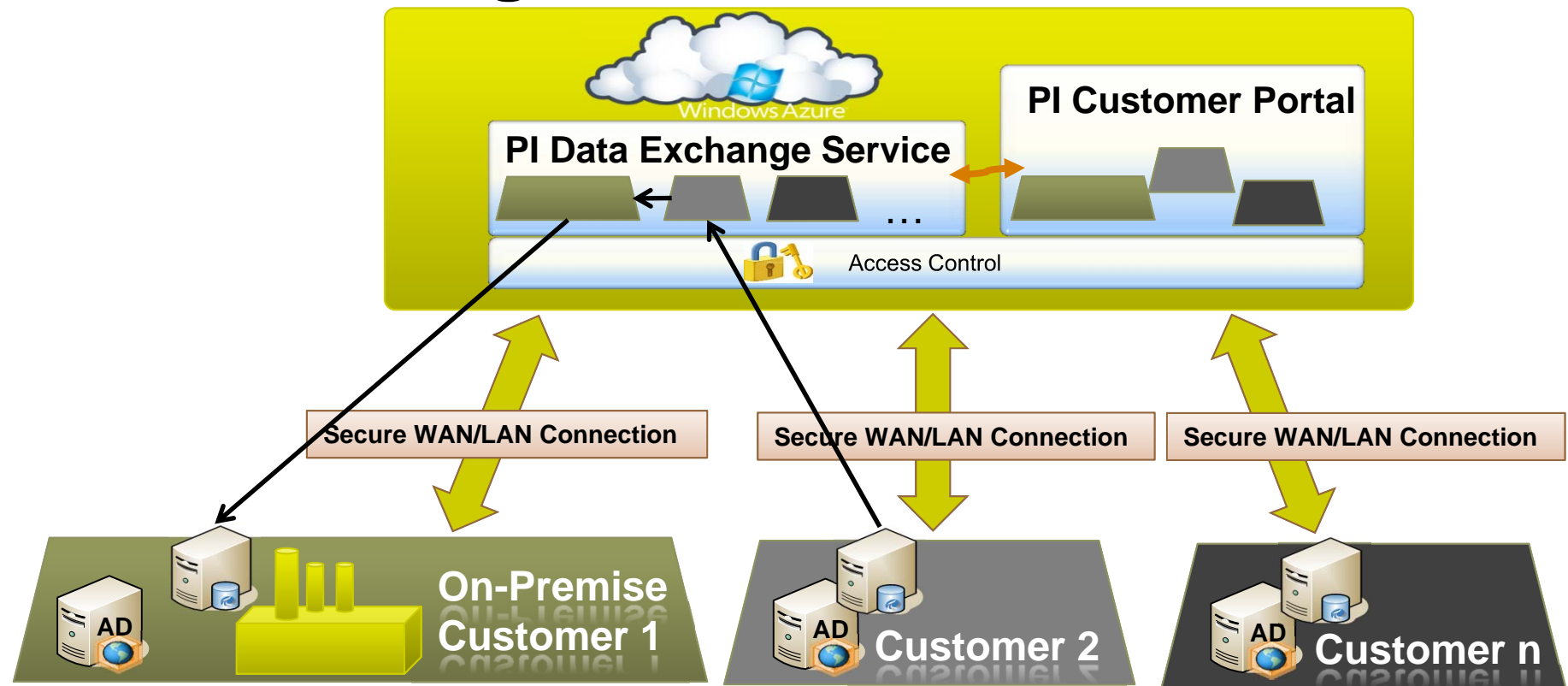
Add to existing PI Systems

- PI System Management
- PI Data Exchange
- PI Coresight Service
- Data, Visualization and other services for Partner and Custom Apps

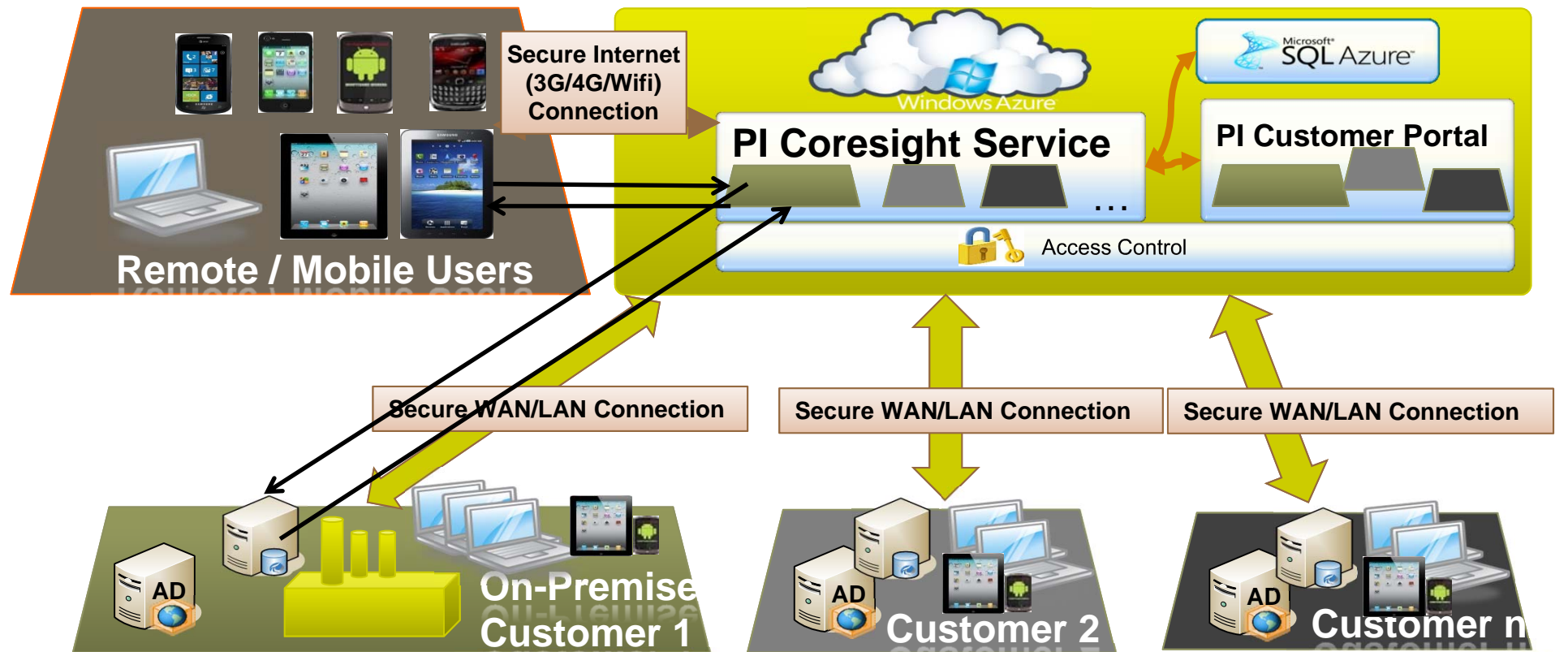
Full PI Deployment in the Cloud

- Simplified Deployment and Management
- Take advantage of Azure Platform (PaaS)
- Functionality you know in PI today plus much more
- Highly efficient and elastic

PI Data Exchange Service



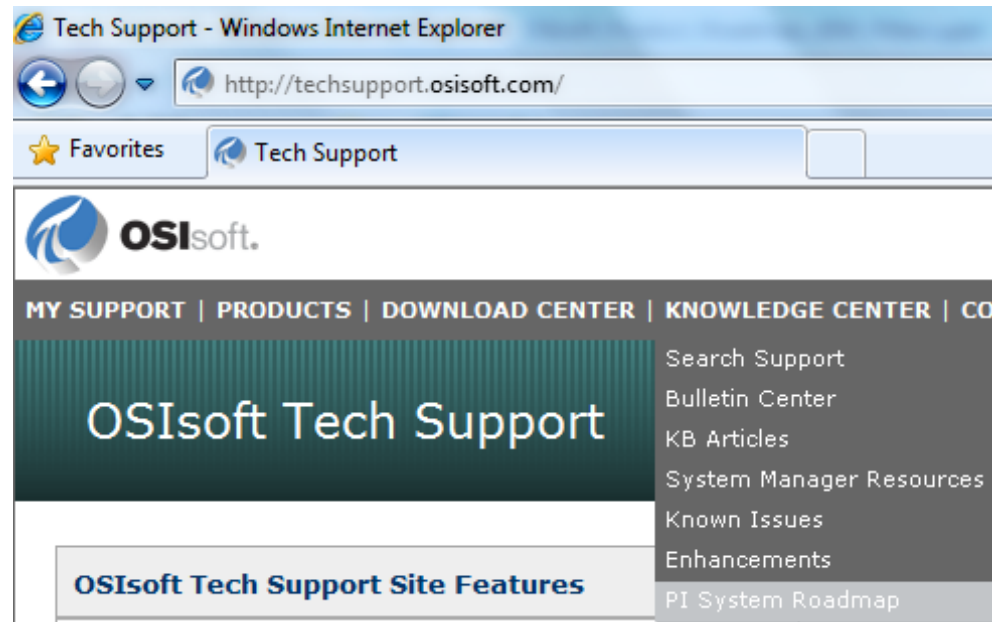
PI Coresight Service with Mobility



Stay Up-To-Date on the Web

- PI System Roadmap on OSIsoft Technical Support Site

<http://techsupport.osisoft.com/techsupport/NonTemplates/roadmap.aspx>





THANK YOU

Brought to you by  **OSIsoft.**

OSIsoft. REGIONAL SEMINARS 2012

© Copyright 2012 OSIsoft, LLC.