



# PI System Roadmap – New and on the Way

Presented by **Hans Otto Weinhold**  
Customer Support Engineer, OSIsoft Europe GmbH

# Agenda and Expectations

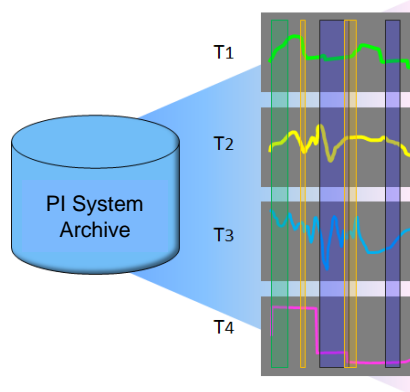
- This presentation assumes:
  - You know the PI System basics
  - You want to hear about what is coming to the PI System in the >6 month horizon
- Very few specific dates
- All information is subject to change
- We want your feedback and suggestions!

# PI System Themes - Future



## Asset Centric PI System

Manage data via  
Asset context –  
Reuse many times



## Event Frames

Identify and use  
important events  
and related data



## Mobile

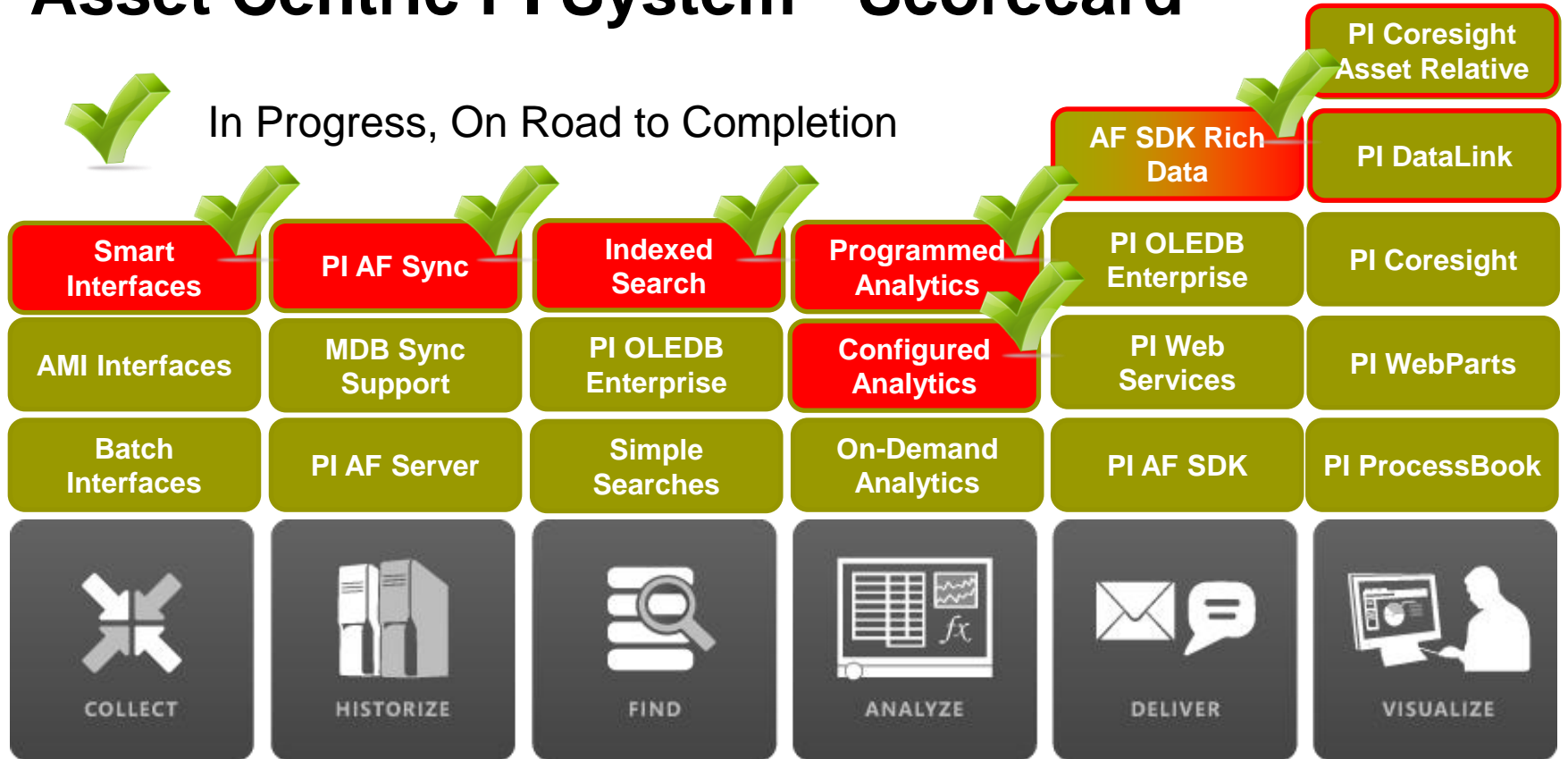
Many Devices  
Touch Centric  
Role Focused



## Cloud

More Data  
Access Anywhere  
Trans-Enterprise

# Asset Centric PI System - Scorecard



# PI AF to PI AF Scenarios

- Implement corporate standards
- Ensure commonality across enterprise
- Configuration changes, updates
- PI Event Frames and data to support analysis and KPIs



Templates





# Project Abacus

Configured and Programmed  
Calculations for PI AF

# Project Abacus Use Case

## Extruding Process

→ Boiler Efficiency =  $AVG(B1..Bn)$

**Boiler1**

Flow Out

Fuel Flow Rate

Efficiency =  $(\text{Flow Out} / \text{Fuel Flow Rate} * 3.14)$

**Boiler2**

Flow Out

Fuel Flow Rate

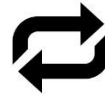
Efficiency

**Boiler3**

Flow Out

Fuel Flow Rate

Efficiency



Boiler  
Template

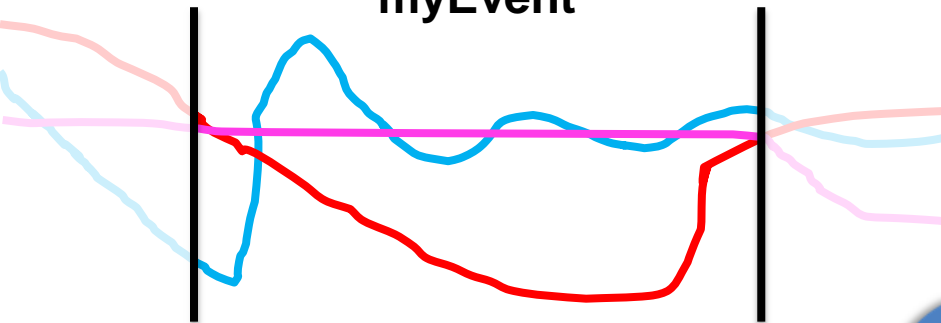


Or myProgrammedCalc (Flow Out, Fuel Flow Rate)

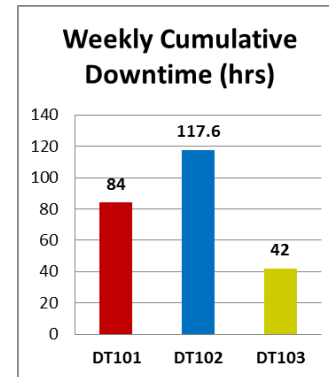
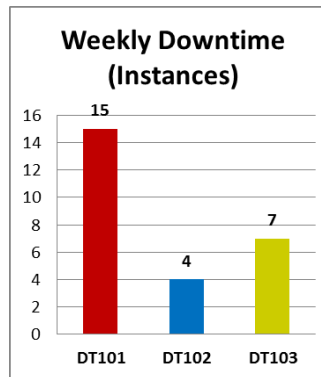


# Simplify Data Analysis

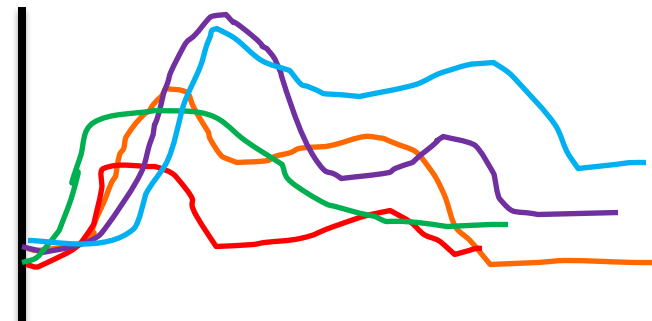
myEvent



# Perform Asset Comparisons



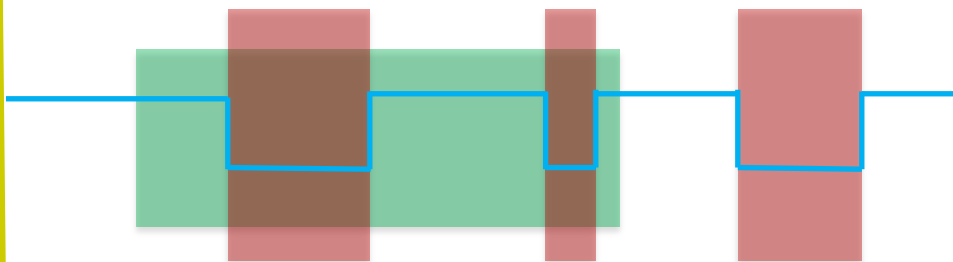
## Event Overlay Trend (Temp)



Name	Temp.Max
EF1	122.47
EF2	109.34
EF3	112.73
EF4	98.61
EF5	125.24

## Downtime Events for Product XYZ

Product XYZ (1)  
Downtime (2)

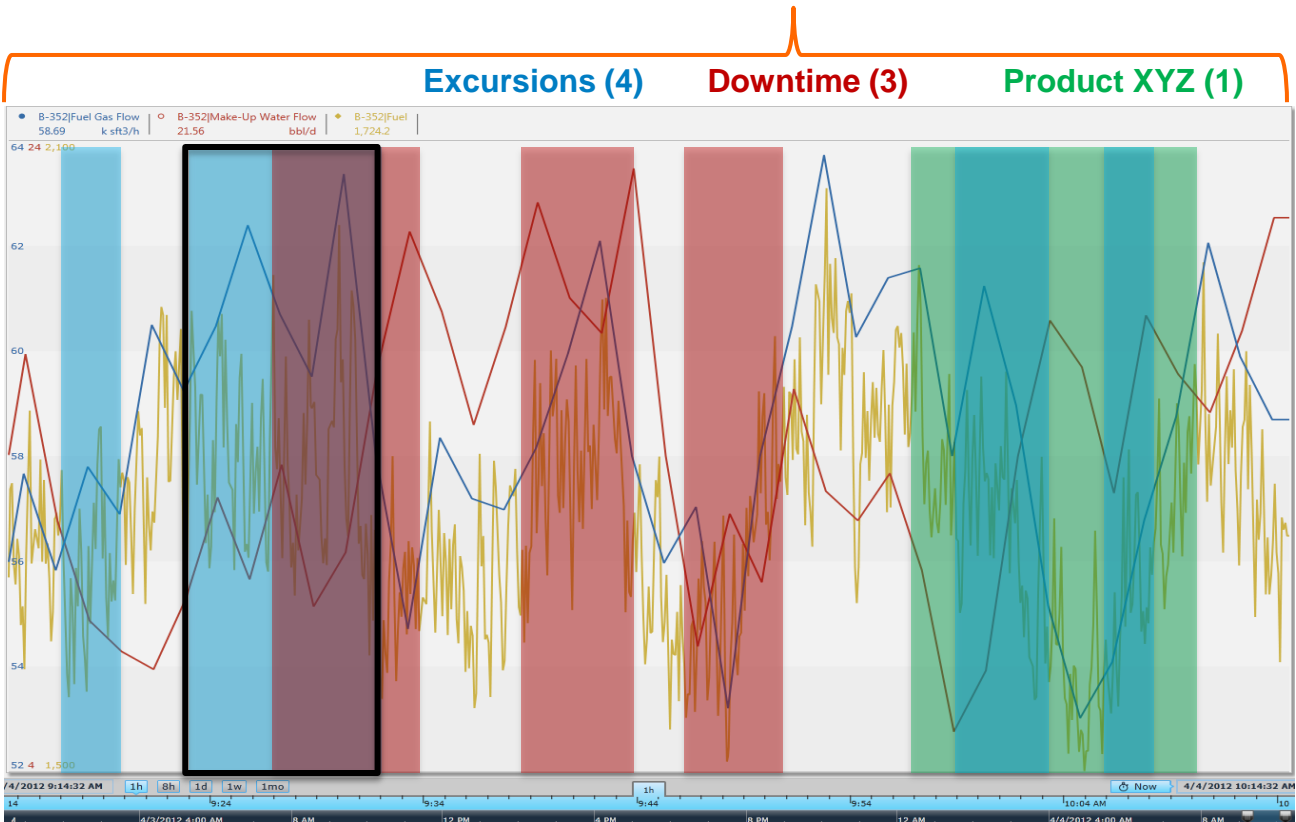


# Perform Event Comparisons

# Discover Event Interrelationships



# PI Event Frames is a core capability of the PI Server to record important process or business events and help you find the *related data*.



Event Attribute	Value
Name	Ex 20121215-0002
Start	15-Dec-2012 10:35:02
End	15-Dec-2012 10:47:26
Duration	12 min, 24 sec
Asset	Boiler-459
Excursion Type	High Violation
Fuel Gas Flow.Avg	37.12 k sft3/h
Fuel.Start	823.48 k sft3/ton
myPIKPI.Max	47.19 bbl/d

# EVENT FILTERS

## Duration

Longer Than  Shorter Than

0 m  200 m

## Category

All  None

- Excursions (4)
- Downtime (3)
- Product XYZ (1)

## Template

All  None

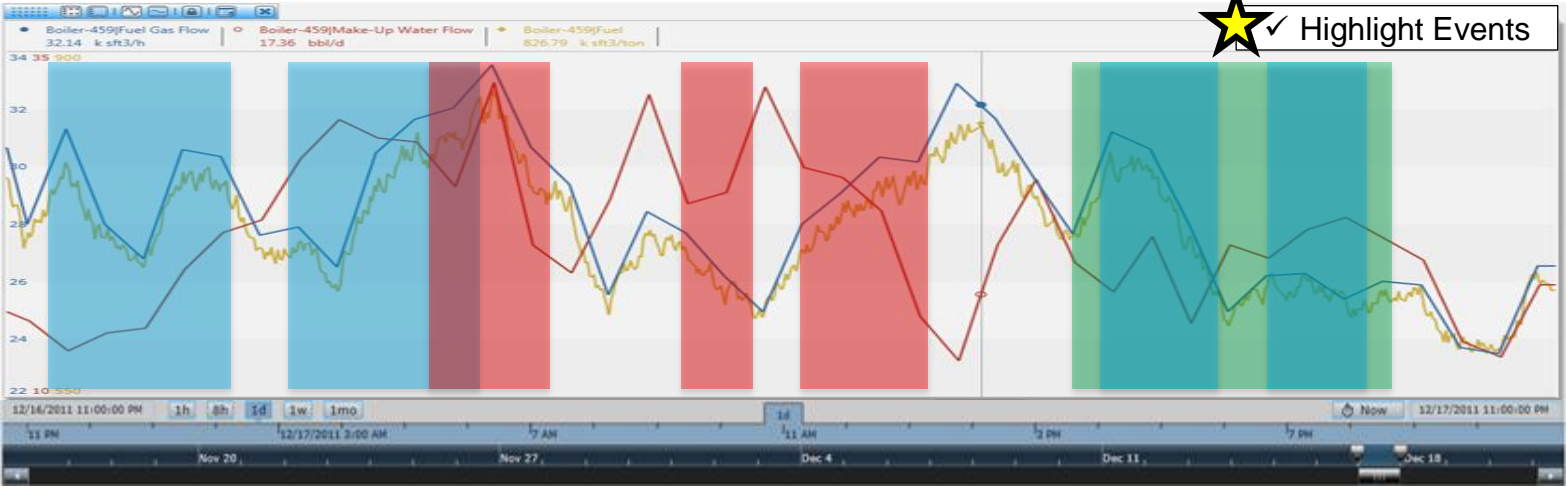
- Boiler Downtime (3)
- Boiler KPI Excursion (4)
- PIUnitBatch (1)

## Temp.Max

Greater Than  Less Than

0 C  100 C

Name	Start	End	Duration	Element	Category	Template	Reason Code	Temp.Max
Ex01	16-Dec-2011 23:05:48	17-Dec-2011 00:25:24	01:19:36	B-459	Excursions	Boiler KPI Excursion	High Temp	91.2
Ex02	17-Dec-2011 02:37:19	17-Dec-2011 04:12:07	01:34:48	B-459	Excursions	Boiler KPI Excursion	Low Pressure	54.1
DT45	17-Dec-2011 04:31:22	17-Dec-2011 05:20:34	00:49:12	B-459	Downtime	Boiler Downtime	Broken Thermo	32.4
DT46	17-Dec-2011 07:56:58	17-Dec-2011 08:19:46	00:22:48	B-459	Downtime	Boiler Downtime	Broken Thermo	31.7
DT47	17-Dec-2011 09:41:22	17-Dec-2011 10:52:58	01:11:36	B-459	Downtime	Boiler Downtime	Safety Shutdown	87.2
XYZ146	17-Dec-2011 13:12:34	17-Dec-2011 16:29:22	03:16:48	B-459	Product XYZ	PIUnitBatch	n/a	48.9
Ex03	17-Dec-2011 19:28:58	17-Dec-2011 20:41:22	01:12:24	B-459	Excursions	Boiler KPI Excursion	High Temp	95.3
Ex04	17-Dec-2011 21:44:58	17-Dec-2011 22:45:46	01:00:48	B-459	Excursions	Boiler KPI Excursion	Low Temp	20.4



Ex01

Ex02

XYZ146

DT45

DT46

DT47

Ex03

Ex04

# Event Generation in Abacus

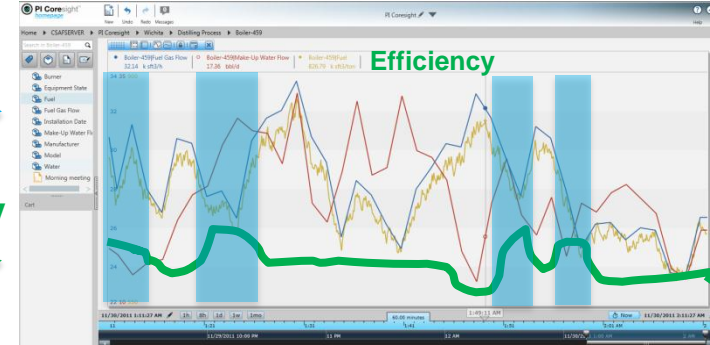


|Efficiency

|Fuel Flow Rate

|Flow Out

“Abacus”



  $\text{Efficiency} = (\text{Flow Out} / \text{Fuel Flow Rate} * 3.14)$

  $\text{myEF.Start} = (\text{Efficiency} > \text{LIMIT})$

$\text{myEF.End} = (\text{Efficiency} < \text{LIMIT}) \text{ AND } (\text{Fuel Flow Rate} > 80)$

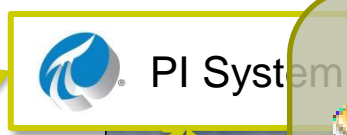
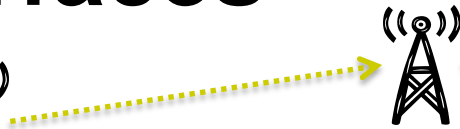
2011	2012		2013		FUTURE
4Q	1H	2H	1H	2H	
Wave 1 – Partner and Early Adopters	Wave 2 – Event Frames for the Mainstream				
	<p><b>Goal</b></p> <p><u><i>End-to-End Event Frames Experience</i></u></p> <ul style="list-style-type: none"> <li>• Ability to generate Event Frames automatically</li> <li>• Several event frame visualization options</li> </ul>				
					<p>Wave 3 – Batch Moves to Event Frames</p> <p><b>Goal</b></p> <p><u><i>Move PI Batch Customers Forward</i></u></p> <ul style="list-style-type: none"> <li>• Batch to EF Migration</li> <li>• Functional Equivalency with existing Batch Clients</li> </ul>

**NOTE: Future dates are subject to change. Last Updated: 04-2012**

# Smart Interfaces



PI Interface

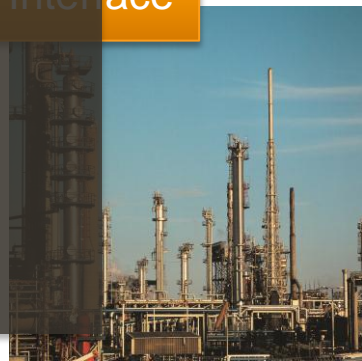
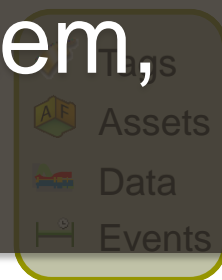


PI Interface



PI Interface

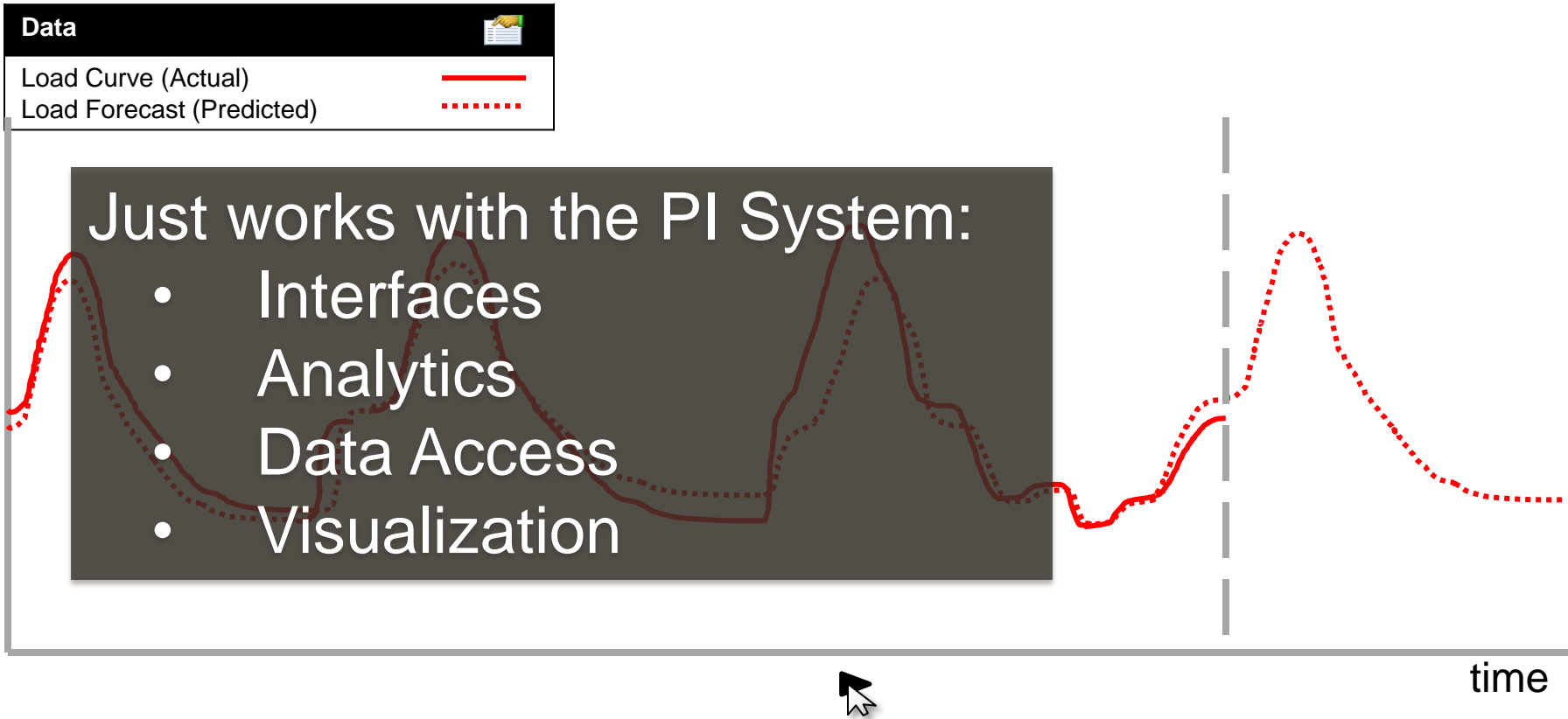
Automatically discover your data, send it to your PI System, and keep it in sync.



# Find - PI System Search

- Optimized Search Engine for the whole PI System
  - And perhaps related systems
- Indexed for high performance
- Weighted / Ranked Results
  - Helps you find things more easily
- Can crawl many PI System machines
- Includes client artifacts
  - PI ProcessBook Displays, PI Coresight Displays
- Common User Experience

# Future Data Coming – Next PI Server



# PI Data Access, longer-term

## PI System SDK

A single high performance SDK that allows you to access all PI System data

## RESTful Web Services

Emerging web service standard, ideally suited for mobile and cloud

## Integration Services

Makes business system integration easy, not just possible (ERP, BI)



# Project Rubik – Why?

## PI System Business Analytics

Provision

Analysis Reports Dashboards & Scorecards

Data Staging

ETL/Data Quality

Existing PI System Artifacts

Tags Assets Data Events

Analysis Cubes Data Warehouse

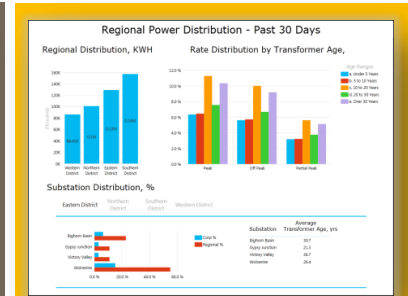
Graphics

PI System

## Users

End Users

IT Pro



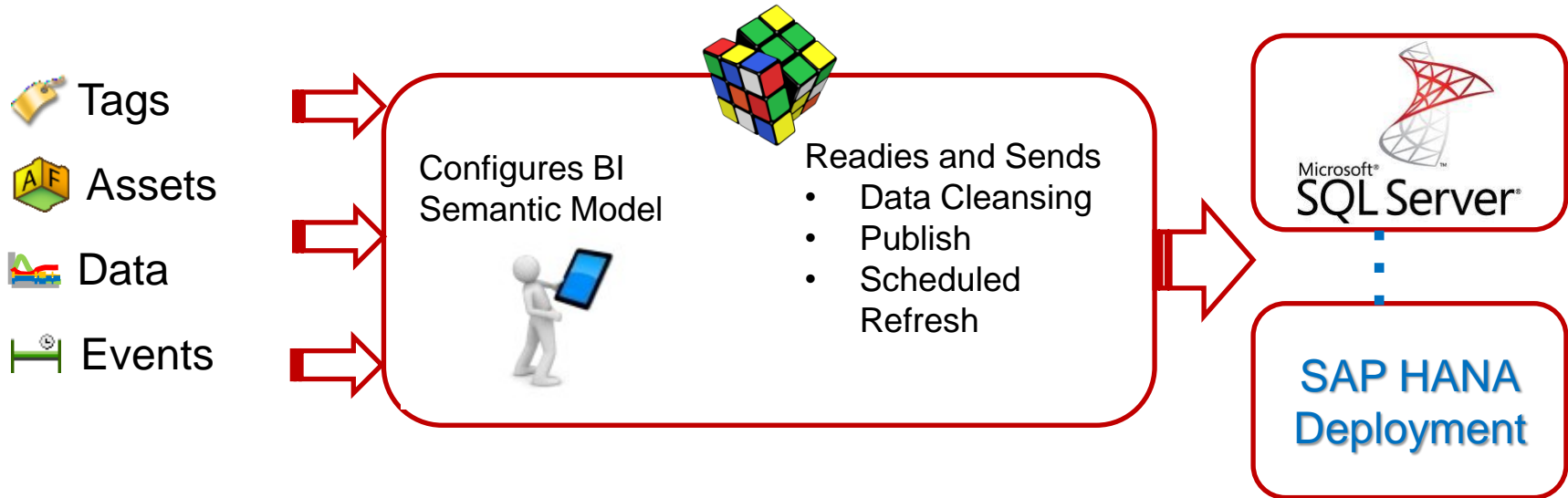
## Power View

Product Category Name	Subcategory	Product Line	Product Line	Product Line	Product Line	Distribution
Audio	Art Conditioners	Bluetooth Headphones	Bluetooth Headphones	Bluetooth Headphones	Bluetooth Headphones	100
Cameras and accessories	Car Chargers	Car Chargers	Car Chargers	Car Chargers	Car Chargers	100
Cell phones	Digital Cameras	Digital Cameras	Digital Cameras	Digital Cameras	Digital Cameras	100
Computers	Home Theater Systems	Home Theater Systems	Home Theater Systems	Home Theater Systems	Home Theater Systems	100
Games and Toys	MP3 Players	MP3 Players	MP3 Players	MP3 Players	MP3 Players	100
Home Appliances	Navigation	Navigation	Navigation	Navigation	Navigation	100
Mobile Phones and Audio	Mobile Phones & PDA's	Mobile Phones & PDA's	Mobile Phones & PDA's	Mobile Phones & PDA's	Mobile Phones & PDA's	100
TV and Video	Video Cameras	Video Cameras	Video Cameras	Video Cameras	Video Cameras	100
	Video	Video	Video	Video	Video	100

PowerPivot

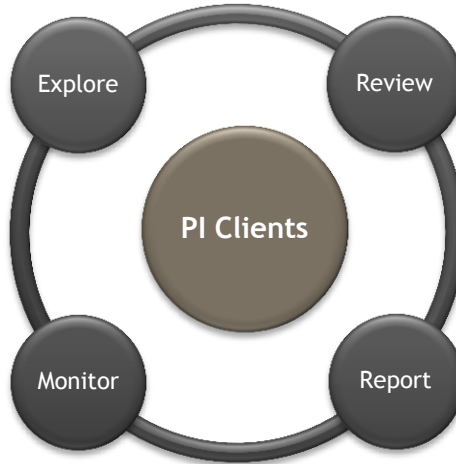
# Project Rubik

- Bridge the gap between PI System experts and BI Users
- Allow PI System expert to select the data
- Leverage BI Visualization Tools from Microsoft, SAP (and others)



# Visualization Landscape

**PI Coresight:**  
*Ad Hoc Analysis & Collaboration*



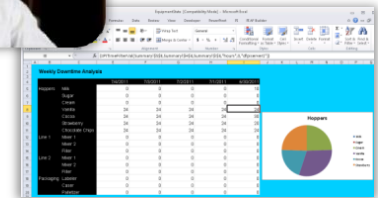
**PI WebParts:** Composite Apps, Shared broadly



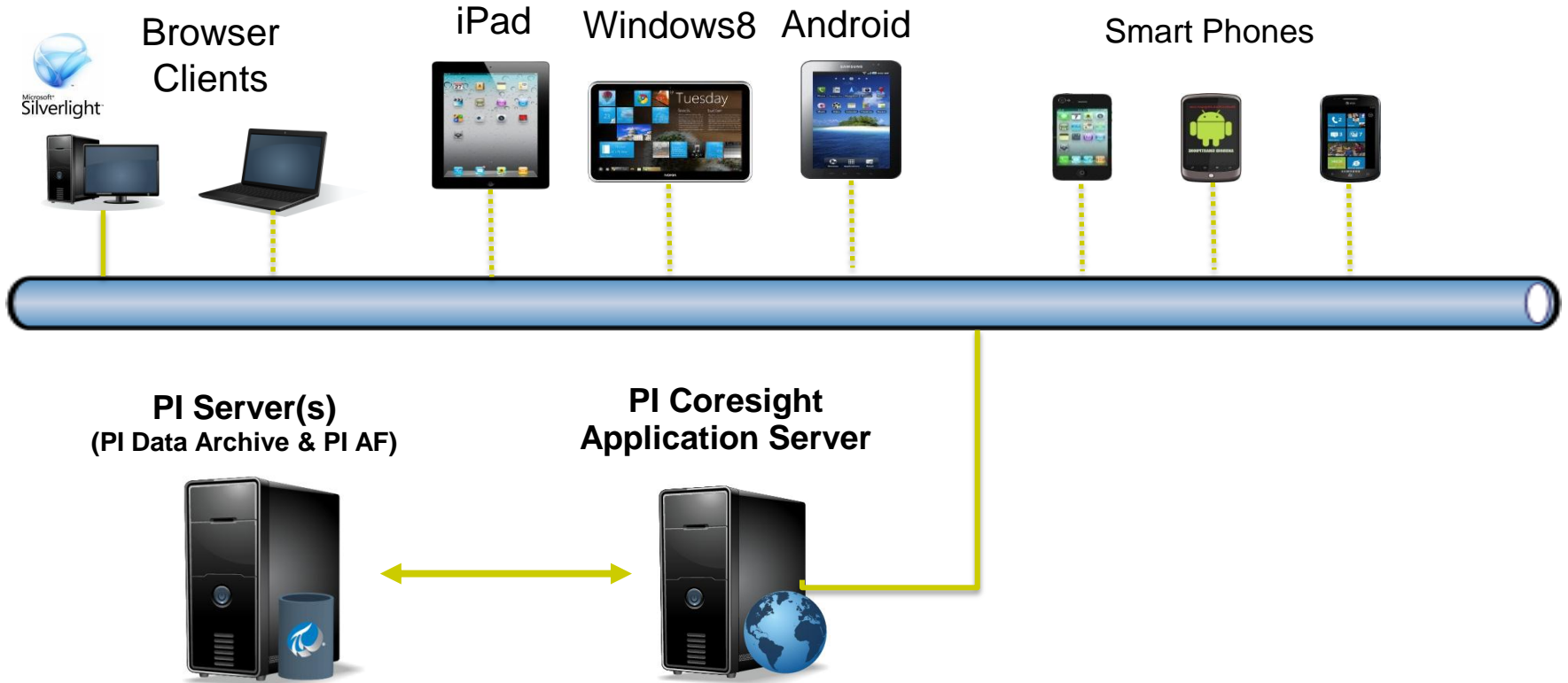
**PI ProcessBook:**  
Display authoring and Process monitoring



**PI DataLink:**  
Reporting and table based analytics in Microsoft Excel



# PI Coresight with Mobile Clients



# PI Coresight Tablet Edition – Target Audience

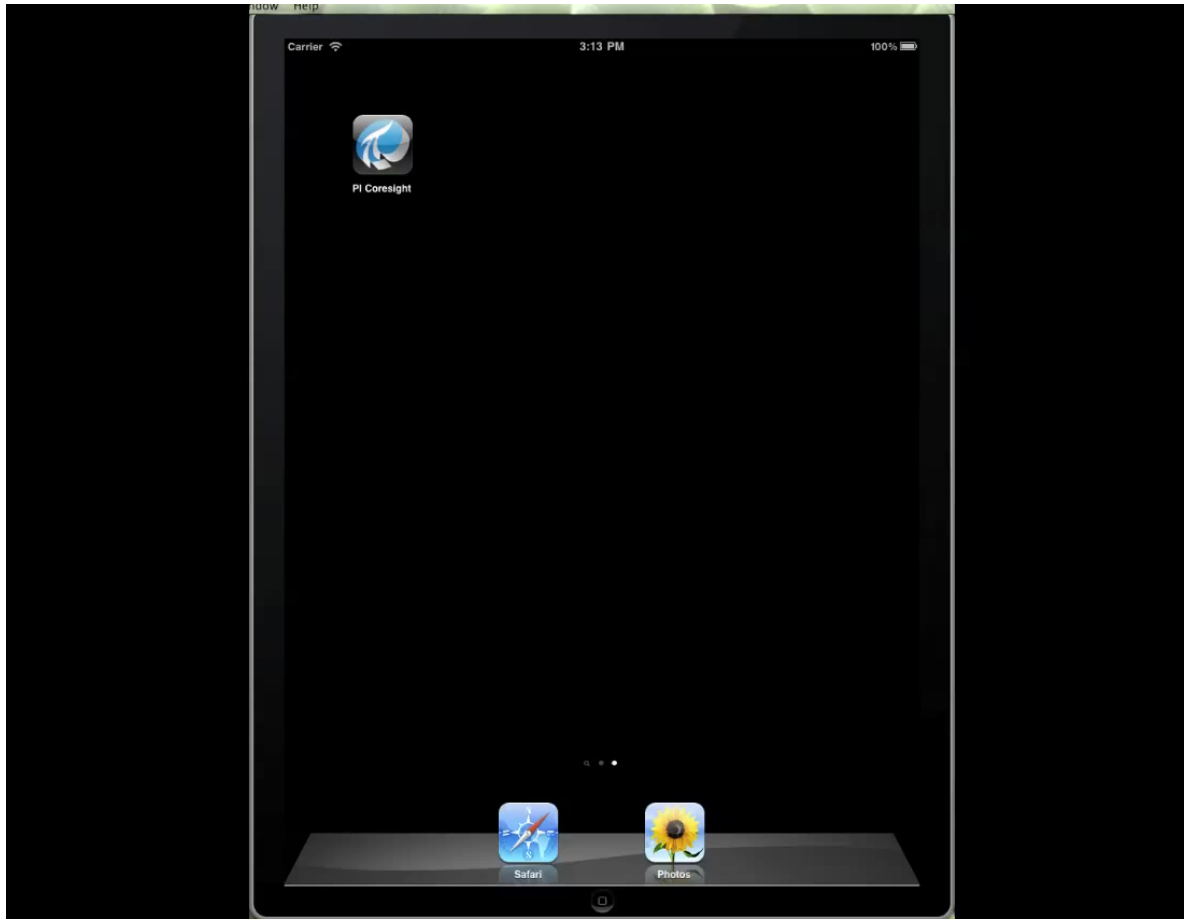
- Plant / Operations Management
  - Most likely to have iPad or similar device
  - Overview of how the plant/utility is running
  - Failures, Efficiency, KPIs, Actual vs Forecast
- Process Engineers / Corporate Planners
  - Identifying problems
  - Optimize processes – plant to plant
  - Create Content / Displays for management
- Maintenance
  - Manual Data Entry / Problem Recording
  - Troubleshooting – documents and real-time
  - Calibration



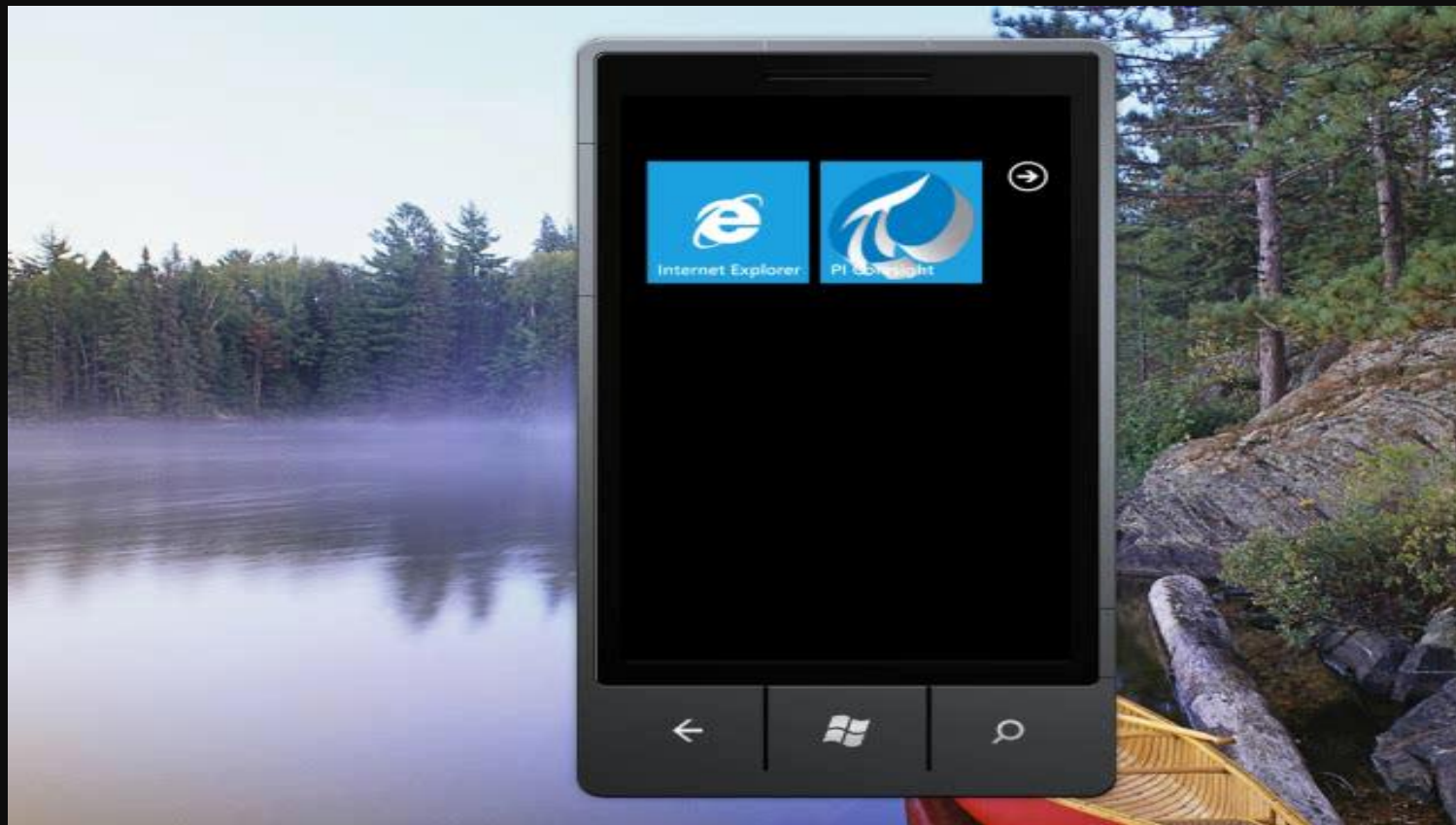
# PI Coresight Phone Edition – Target Audience

- Check in with Plant from Home / Road
- Tell me if something is wrong!
- Focus on Notifications, Acknowledge, Dispatch, and Escalation
- Give me some basic data related to notification
- Outside of plant - 3G, 4G, or public WiFi
- Personalization

# PI Coresight iPad Demo

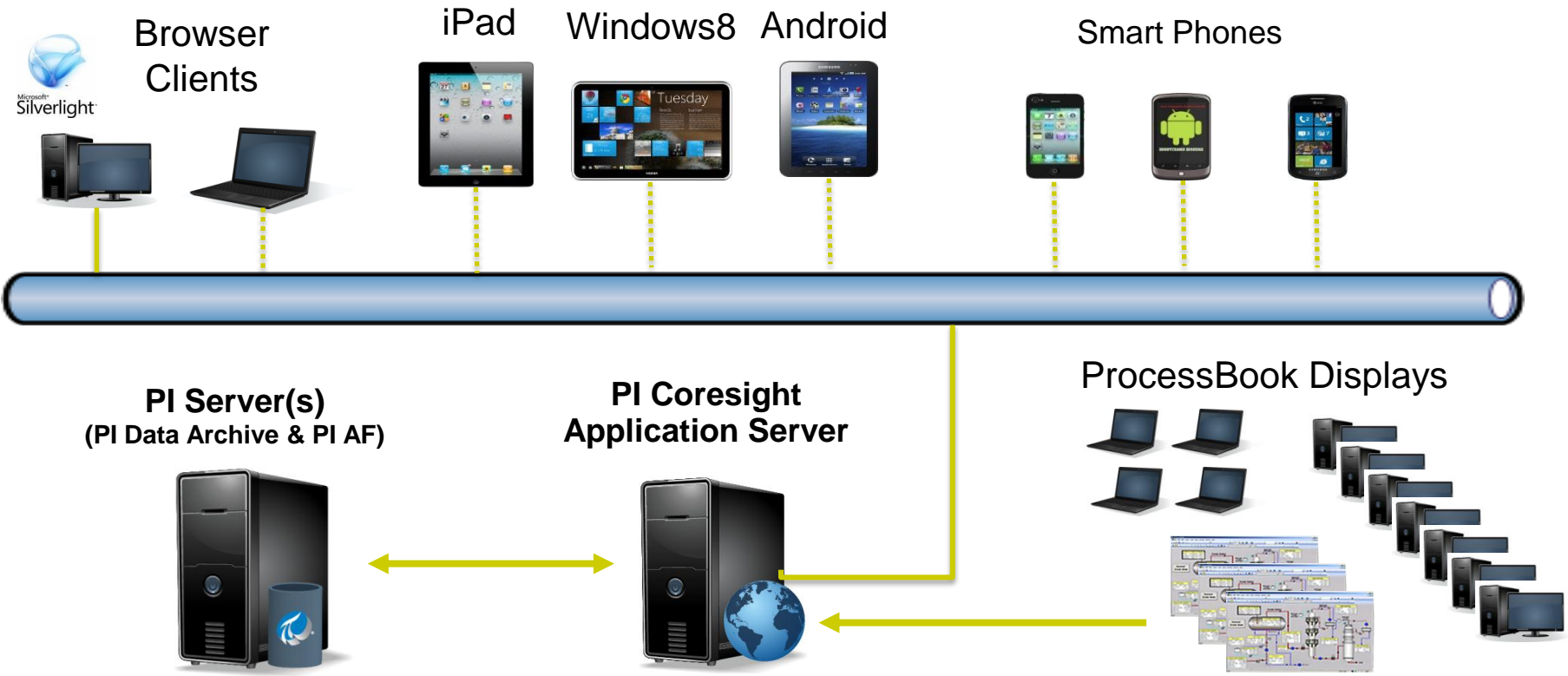


# PI Coresight Phone Demo





# PI Coresight – ProcessBook Display Viewer



# PI WebParts 2012

- Support for SharePoint 2010 and SharePoint “15”
- Become a better SharePoint corporate citizen
- Become a more “IT” friendly product
- Replace obsolete technology
- Set the stage for OS and Browser independence, Mobile



- Remote Data Services
- WSP Installs
- Can leverage Adobe SVG Viewer if needed
- Support for IE 8



- Remote Data Services
- WSP Installs
- Visualization using Web Standards
- Support for IE9, IE10, Firefox, and Chrome

# Evolution of Operating Systems



# PI Cloud Initiatives

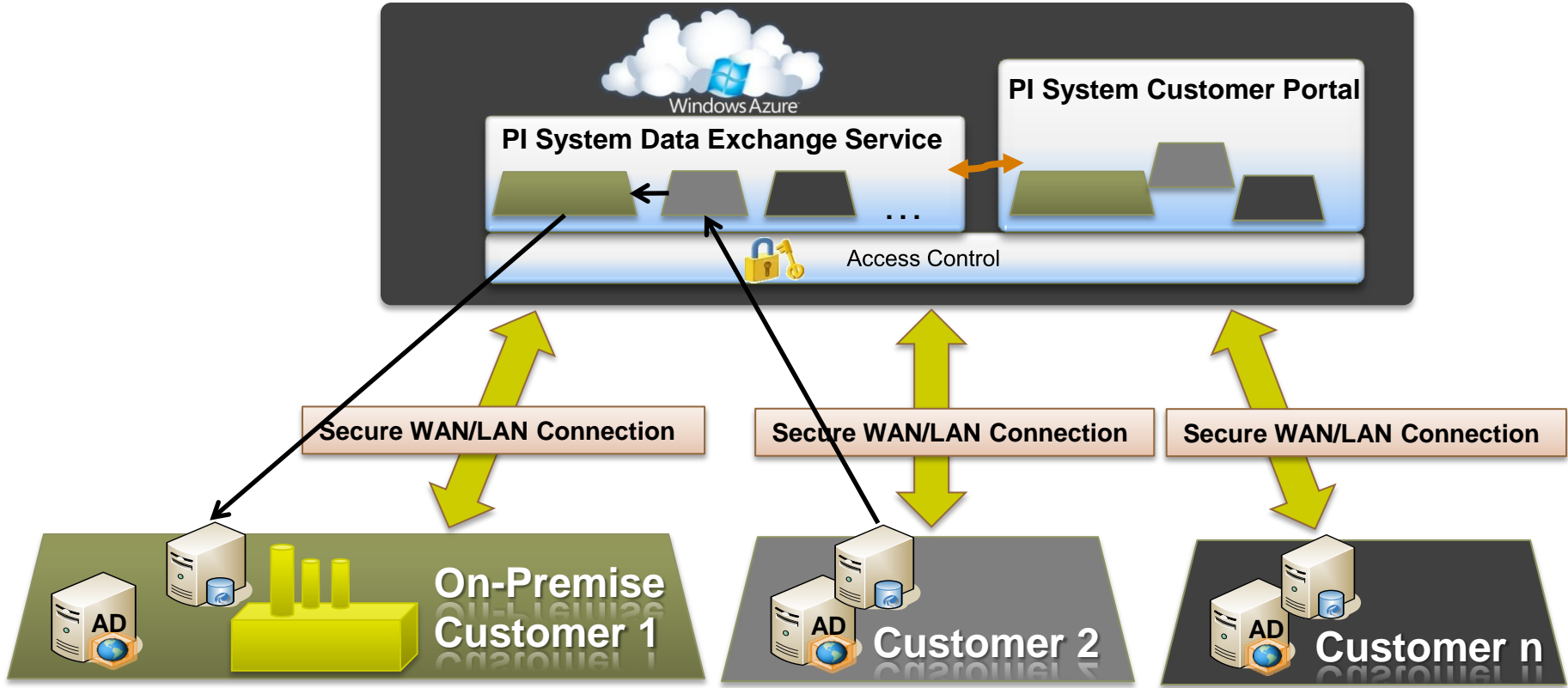
## Add to existing PI System installations

- PI System Management
- PI Data Exchange
- PI Coresight Service
- Data, Visualization and other services for Partner and Custom Apps

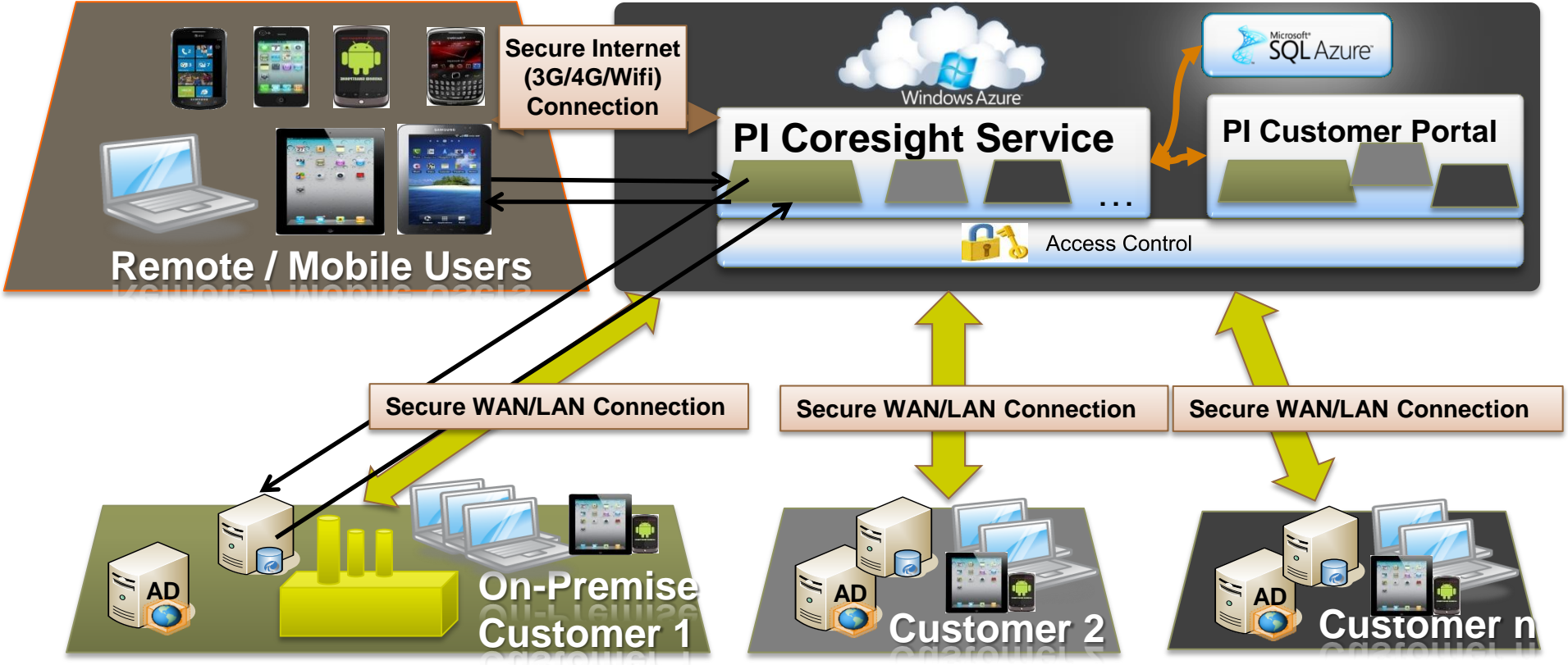
## Full PI System Deployment in the Cloud

- Simplified Deployment and Management
- Take advantage of the Windows Azure Platform (PaaS)
- Functionality you know in the PI System today plus much more
- Highly efficient and elastic

# PI Data Exchange Service



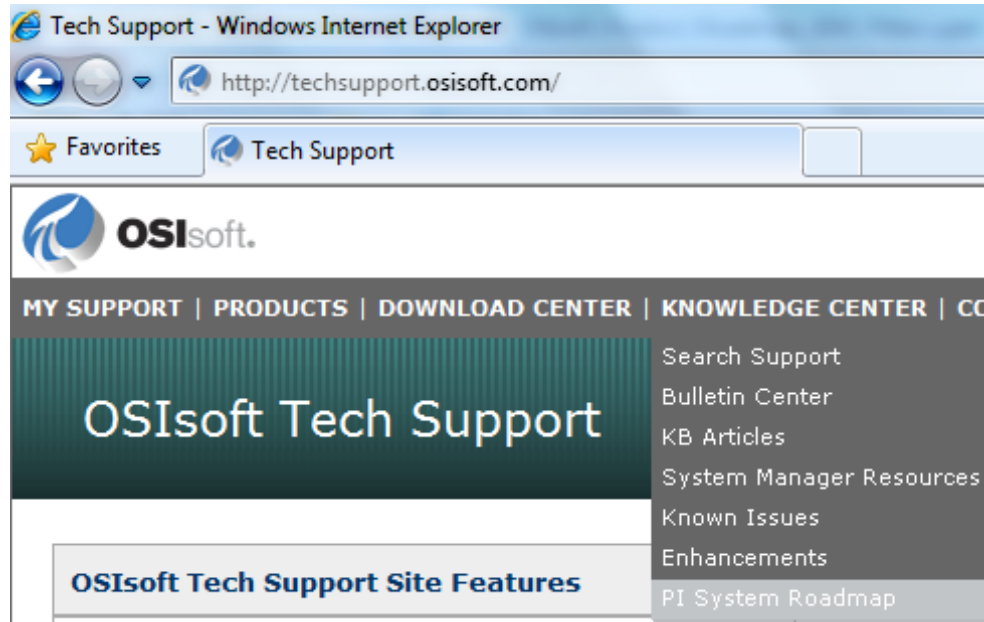
# PI Coresight Service with Mobility



# Stay Up-To-Date on the Web

- PI System Roadmap on OSIsoft Technical Support Site

<http://techsupport.osisoft.com/techsupport/NonTemplates/roadmap.aspx>





# THANK YOU

Brought to you by  **OSIsoft.**